



tralac | trade law centre

**Intra-Africa trade in agr products
(ambiguous instructions)**

Ron Sandrey and others

Background

- Based on chapter in the tralac/NAMC book

Old friends, new friends and good friends
(EU & US; BRICs; and Africa)

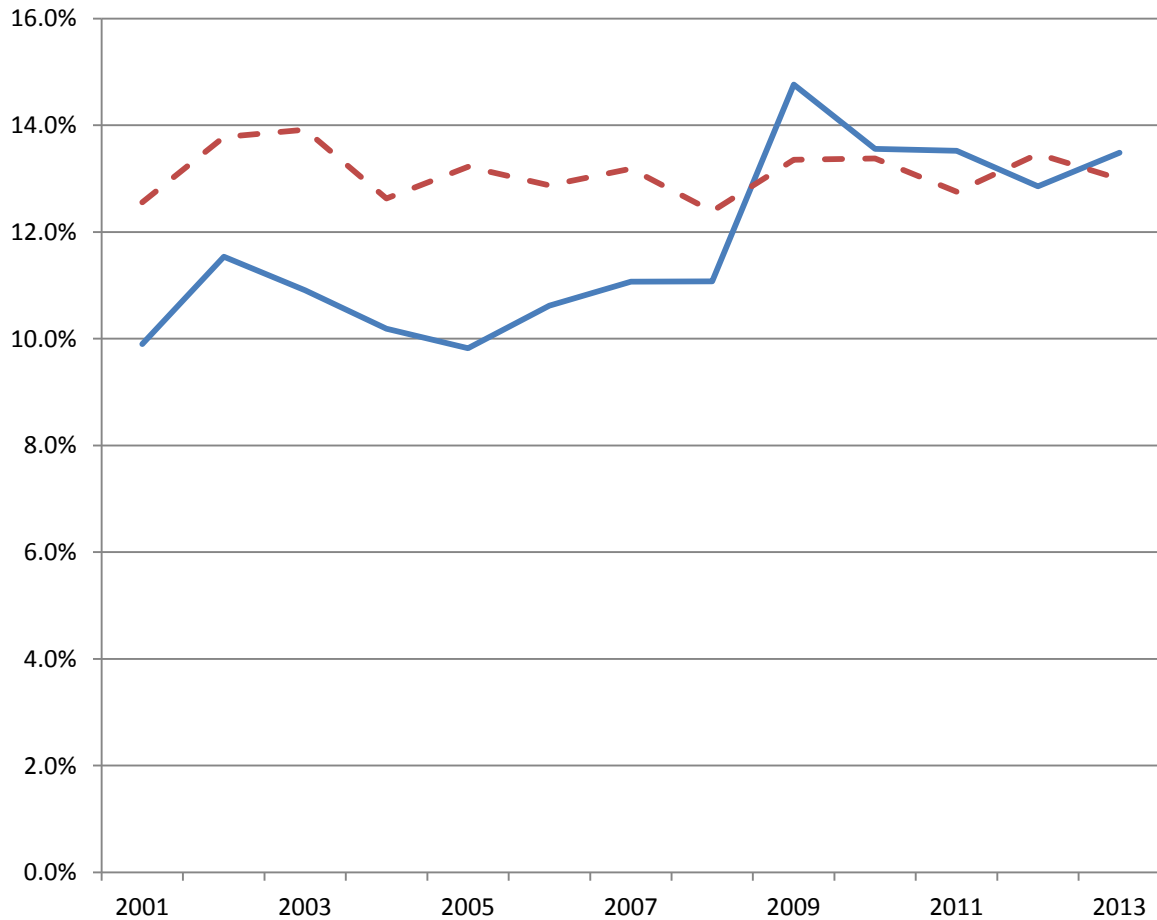
Black holes in trade data

- **2014 South African exports to China \$8.7 bill - gold ? - China imports \$44.6 billion 'Special'.**
- **South Africa importation HS 61 and 62 from China are 50% Chinese exports**
- **Tobacco - Zimbabwe (China / South Africa)**
- **Intra- Afr ships trade**
- **Reliable Intra-SACU only from 2010**
- ***Informal***

Trade data

- **ITC best source**
- **But some African countries do not report**
- **Therefore use of mirror data**
- **What are we measuring ??(eg, CiF versus FoB)**
- **Moral is be very careful of African trade data**

Intra Afr trade (note 2010 change)



— To Africa
- - From Africa



African Imports from Africa 2013

	Product	\$ millions		% share	
		2013	2013	2013	2013
HS	Total	85,836		14.2%	
'27	Fuels	23,849		24.0%	
'89	Ships, etc.	6,432		28.9%	
'84	Machinery	4,726		6.7%	
'17	Sugars	1,191		17.7%	
'22	Beverages	1,085		28.2%	
'15	Fats and oils	1,022		11.7%	
'24	Tobacco	982		36.7%	
'09	Coffee, tea	977		45.1%	

Agriculture

- **agriculture - WTO definition, a definition that basically covers the HS Chapters 01 through to and including HS 24, with the exception of Chapter 03 (fish products) and the fisheries products from HS 16.**
- **Plus some later HS Chapters - casein, hides and skins, wool and cotton.**
- **The data from the International Trade Centre (ITC) for 2001 to 2013 (where available) and in US dollars.**
- **Data for the RSA section sourced from the commercially obtainable Global Trade Atlas (GTA) data base, and uses the annual data for 1996 to 2013 inclusive**
- **expressed in Rand rather than US dollars.**

African agr exports

- **Overall, the African global share of world agricultural exports is edging upwards.**
- **The main African agricultural exporters by country in 2012 were Nigeria, South Africa, Côte d'Ivoire, Ghana, Egypt, Ethiopia, Morocco, Kenya, Tanzania and Zimbabwe**
- **Cocoa and fruit and nuts are the two main commodity exports from Africa, followed by coffee, cotton and tobacco.**
- .

Imports

- For African agricultural **imports** the market share of the EU is declining over time, as are the shares from both Africa and the US.
- BRICs increased, but aggregate share from 'friends' has declined over time (Mercosur, ASEAN).
- Egypt was the leading agricultural importer during 2013, followed by Algeria, Nigeria, South Africa, Morocco, Angola and Libya.
- The main African agricultural imports were cereals, fats and oils, sugars, dairy products and meat and meat products.

Balance

- Agriculture had a % share of total African exports of 7.9 % for 2011 and 8.6% for 2012, while for imports the respective years were 16.8% and 15.3%.
- Africa is therefore a net agricultural importer overall

African agricultural exports, US\$ million

Exporters / Yr	2003	2007	2012	2013
Africa \$ m	15,890	22,453	40,783	34,343
Africa % of world	3.0%	2.6%	4.0%	
% to EU	54.8%	53.4%	35.4%	
% to Africa	25.7%	25.9%	22.6%	
% to BRICs	6.7%	6.8%	11.2%	
% to US	7.9%	5.8%	4.2%	
Sub total	95.1%	92.0%	73.4%	

Agr exporters, US\$ million (Data problems)

Exporters	2001	2007	2012	2013
Africa	11,410	24,416	55,542	18,844
Nigeria	5	957	7,902	0
South Africa	2,258	3,980	6,491	9,206
Côte d'Ivoire	2,094	3,289	5,990	0
Ghana	0	1,285	5,660	0
Egypt	0	0	4,958	0
Ethiopia	308	1,004	3,642	0
Morocco	0	2,130	2,966	3,387
Kenya	1,036	2,151	2,858	0
Tanzania	305	671	1,576	1,338
Zimbabwe	802	874	1,260	1,226

Exports, \$ million

Exports	2011	2012
agriculture % total	7.9%	8.6%
Cocoa	8,609	10,941
Fruit, nuts	6,614	9,353
Coffee, tea	4,159	4,461
Cotton	3,037	3,407
Tobacco	2,767	3,119
Vegetables	3,318	3,002
Oil seed	1,980	2,357
Sugars	2,308	2,001
Fats and oils	2,396	1,927
Dairy	953	1,915



African agr imports by % source

Sources	2003	2007	2012
African agr \$m	21,132	40,482	86,414
Africa % world	3.6%	4.3%	6.1%
from EU	42.0%	35.6%	23.4%
from Africa	19.9%	15.7%	13.1%
from BRICs	16.0%	21.2%	24.0%
from USA	14.7%	16.3%	7.2%
sub total	92.6%	88.8%	67.8%

African agr importers

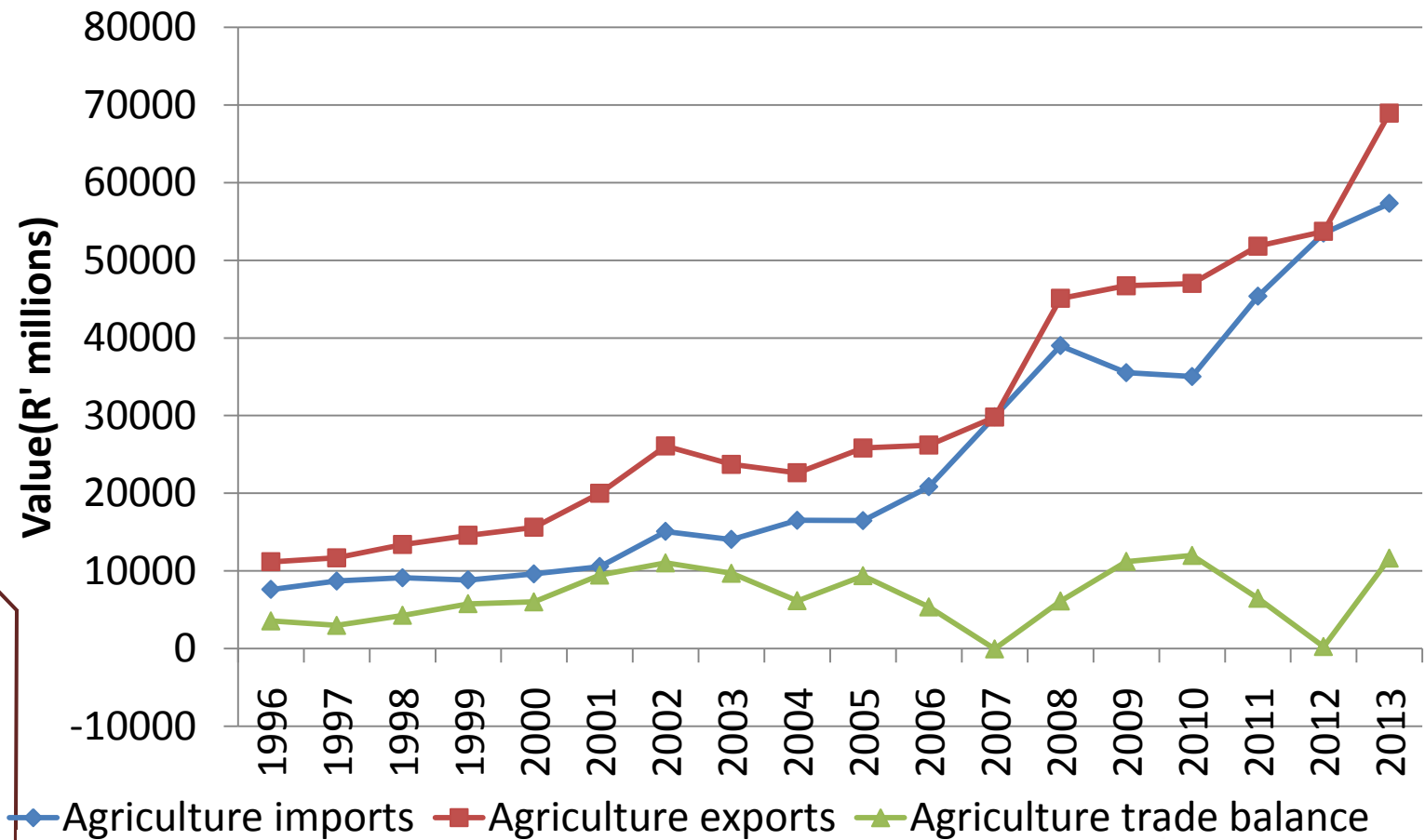
Importers	2011	2012
Africa	96,248	86,414
Egypt	15,299	15,914
Algeria	10,824	10,075
Nigeria	18,981	6,901
South Africa	6,354	6,765
Morocco	6,393	6,273
Angola	3,756	3,858
Libya	2,408	3,618
Tunisia	3,676	2,937
Sudan	2,193	1,987
Kenya	2,026	1,885

Agr imports by sector

Imports	2011	2012
Agriculture	96,248	86,414
agriculture % total	16.8%	15.3%
Cereals	27,400	25,390
Fats and oils	10,468	8,913
Sugars	7,892	7,083
Dairy	6,365	5,180
Meat	3,848	4,712
Residues	3,067	3,571
Beverages	2,878	3,463
Cotton	3,801	3,384
Cereal products	7,174	2,879
Tobacco	2,590	2,709



RSA Agr Balance Rand – (CIF values)



- Look at South Africa

RSA Agr Exports - % shares

Destination	1996	2007	2013
World \$ MILLION	2,590	4,459	7,613
EU	35.8%	43.2%	31.3%
Africa	22.0%	20.0%	29.5%
SADC	18.5%	13.2%	22.9%
TFTA	22.0%	16.4%	25.8%
Asean	3.9%	3.0%	4.0%
BRIC	4.8%	5.5%	7.8%
EAC	1.6%	2.2%	1.8%
Mercosur	3.7%	0.4%	0.3%
USA	3.8%	5.4%	3.6%
Zimbabwe	2.1%	1.4%	7.9%
Mozambique	4.8%	4.4%	5.9%
Japan	8.7%	6.2%	4.7%
China	0.4%	2.5%	4.4%
Angola	6.3%	3.4%	3.9%
UAE	0.8%	2.5%	3.0%
Zambia	1.7%	1.4%	2.9%

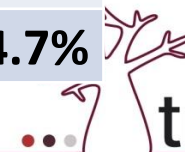
Agr exports at HS 6 - % shares

		1996	2007	2013
HS	Description/ all	2,590	4,459	7,613
080510	Oranges	4.3%	8.9%	7.5%
100590	Maize	10.8%	0.3%	7.4%
220421	Wine	4.3%	11.7%	6.3%
080610	Grapes	4.5%	6.9%	6.0%
080810	Apples	3.5%	4.7%	5.6%
220429	Wine	0.8%	3.1%	4.1%
510111	Wool	2.0%	3.3%	3.8%
080830	Pears	0.0%	0.0%	2.6%
170199	Sugar	2.8%	1.7%	2.1%
210690	Food Nesoi	0.6%	1.6%	1.7%
080550	Lemons	0.0%	1.2%	1.7%
080520	Mandarins	0.2%	1.4%	1.6%
170114	Sugar	0.0%	0.0%	1.6%

Oranges

080510, Oranges \$ million

Partner	1996	2013
World	112	569
EU	70	215
BRIC	5	78
Africa	2	22
USA	0	27
	% shares	
EU	62.5%	37.8%
BRIC	4.5%	13.7%
Africa	1.8%	3.9%
USA	0.0%	4.7%



Maize (Corn)

100590, Corn \$ million		
Partner	1996	2013
World	279	564
Africa	22	100
EU	8	21
BRIC	2	1
USA	0	0
	% shares	
Africa	7.9%	17.7%
EU	2.9%	3.7%
total	11%	22%

Wine (bottles)

220421, Wine Not Over 2 Litres -\$ million		
Partner	1996	2013
World	110	479
EU	80	278
Africa	7	41
BRIC	0	28
USA	5	43
	% shares to each market	
EU	72.7%	58.0%
Africa	6.4%	8.6%
BRIC	0.0%	5.8%
USA	4.5%	9.0%

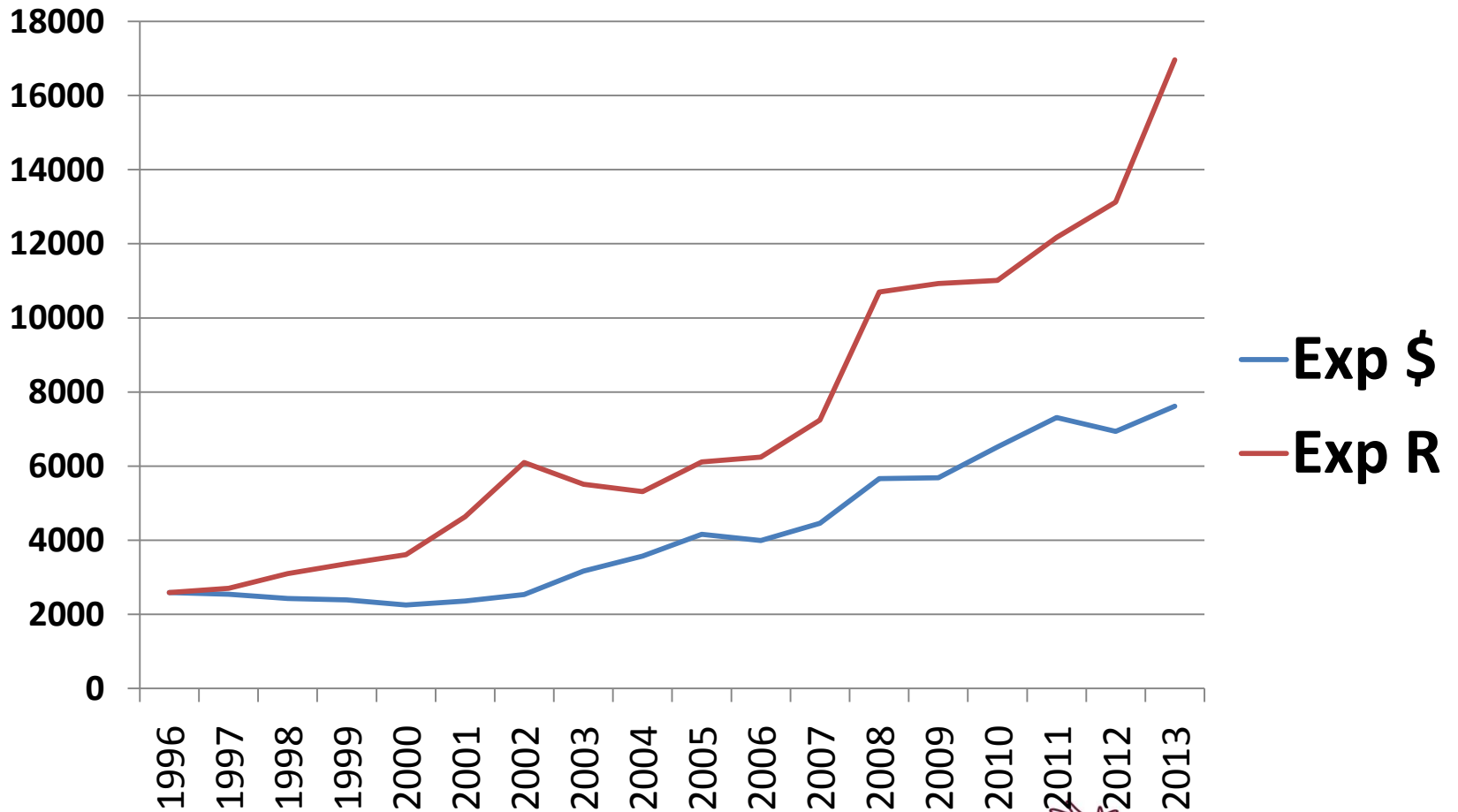
Apples

080810, Apples		
Partner	1996	2013
World	92	424
EU	65	155
Africa	10	139
	% shares	
EU	70.7%	36.6%
Africa	10.9%	32.8%
BRIC	3.3%	1.9%

RSA to Africa Agr products

South Africa Agr Export To Africa					
Product \$ mill /Year		2001	2007	2013	
WTO Agriculture		590	891	2243	
170199	Sugar	47	71	150	
080810	Apples	12	42	139	
210690	Food Preps	21	57	109	
100590	Maize	22	9	100	
110313	Groats	2	4	64	
150790	Soybean Oil	1	0	58	
240220	Cigarettes	70	51	57	
110100	Wheat	10	1	54	
220710	Ethyl Alcohol	15	28	45	
220870	Liqueurs	1	9	44	
230990	Animal Feed	2	7	43	
210410	Soups etc	1	15	42	

Agr exports Rand & Dollars



RSA AGR IMPORTS (BRIC / Mercosur double)

Source/Yr	1996	2007	2013
World \$m	1830	4366	6001
Africa	10.3%	6.4%	5.7%
EU	24.5%	23.2%	31.5%
BRIC	6.4%	17.4%	22.5%
USA	17.2%	7.3%	4.7%
Mercosur	13.3%	29.6%	18.7%
Asean	12.0%	14.6%	14.1%
SADC	6.3%	5.2%	4.5%
Brazil	2.2%	9.2%	8.1%
China	1.4%	4.3%	7.9%
Argentina	10.7%	19.7%	9.7%
India	2.8%	3.9%	5.2%



Imports by HS 6 lines

	Description/Yr	1996	2007	2013
HS 6	Total \$m	1830	4366	6001
100630	Rice	7.5%	6.7%	10.6%
100199	Wheat	7.9%	5.9%	6.4%
230400	Soybean cake	3.6%	4.8%	5.5%
151190	Palm Oil	2.8%	4.5%	5.1%
220830	Whiskies	4.0%	4.9%	4.7%
020714	Chicken Cuts	1.3%	4.0%	4.5%
210690	Food Preps	1.7%	3.1%	2.9%
150790	Soybean Oil	0.1%	2.2%	2.8%
170199	Sugar	0.0%	0.1%	2.4%
151211	Sunflower Oil	4.0%	2.6%	2.3%
020712	Chicken offal	0.0%	0.4%	1.4%

