

# The ECOWAS Pathway to Achieve the SE4ALL Targets

**Mahama Kappiah**  
**Executive Director**  
**ECREEE**



# ECREEE – the ECOWAS Centre for Renewable Energy and Energy Efficiency

- Established by Regulation C/REG. 23/11/08 of the 61<sup>st</sup> Session of the ECOWAS Council of Ministers on November 23, 2008 as the ECOWAS agency with the mandate to contribute to the sustainable development of the region by promoting RE & EE markets development
- Secretariat is based in Praia, Cape Verde with National Focal Institutions (NFIs) among all ECOWAS countries
- The Centre was officially inaugurated on the of 6th July 2010
- ECREEE was appointed by the ECOWAS Energy Ministers as the SE4ALL Focal Point for West Africa
- Established with support of core partners:



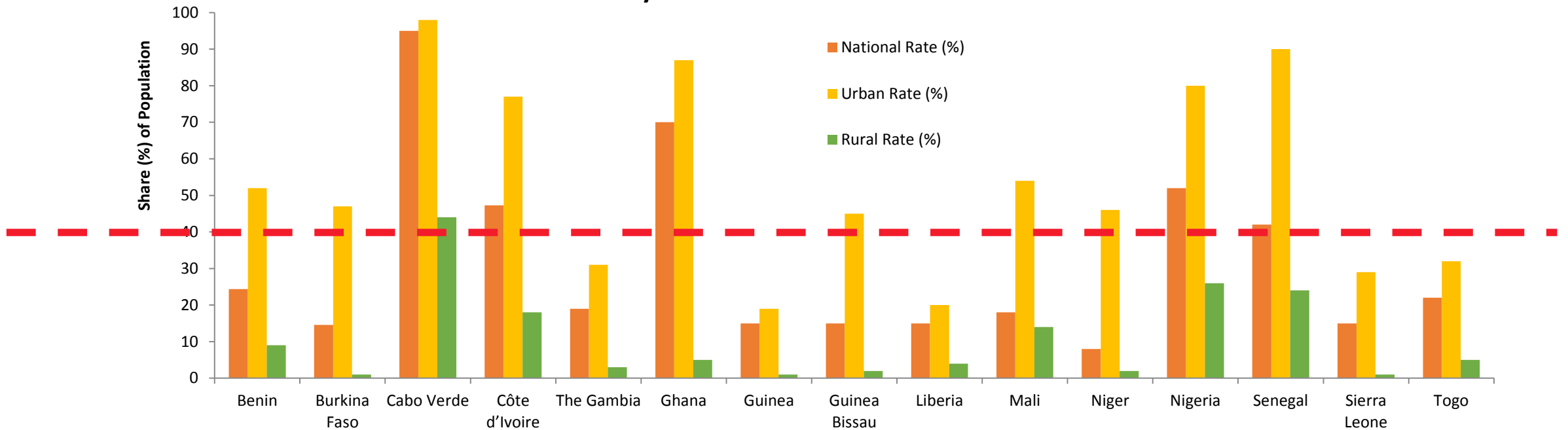
# ECREEE Main Result Areas



# Energy Access Status in ECOWAS region

Only about 42% of the total ECOWAS population have access to electricity  
While only 8% of the rural population have access

### Electricity Access Rates in ECOWAS Member States



Source: ECREEE, REN21

More than 175 million people without access to electricity services

# ECOWAS RE & EE POLICIES

- Adopted by the ECOWAS Authority of Heads of State and Government, July 2013, Abuja
- Start of implementation process on national levels – development of national RE and EE Action Plans and the SE4ALL Action Agenda
- ECREEE is coordinating the implementation of the RE and EE Policies and is the SE4ALL in ECOWAS MS



# ECOWAS RE POLICY TARGETS BY 2020/2030

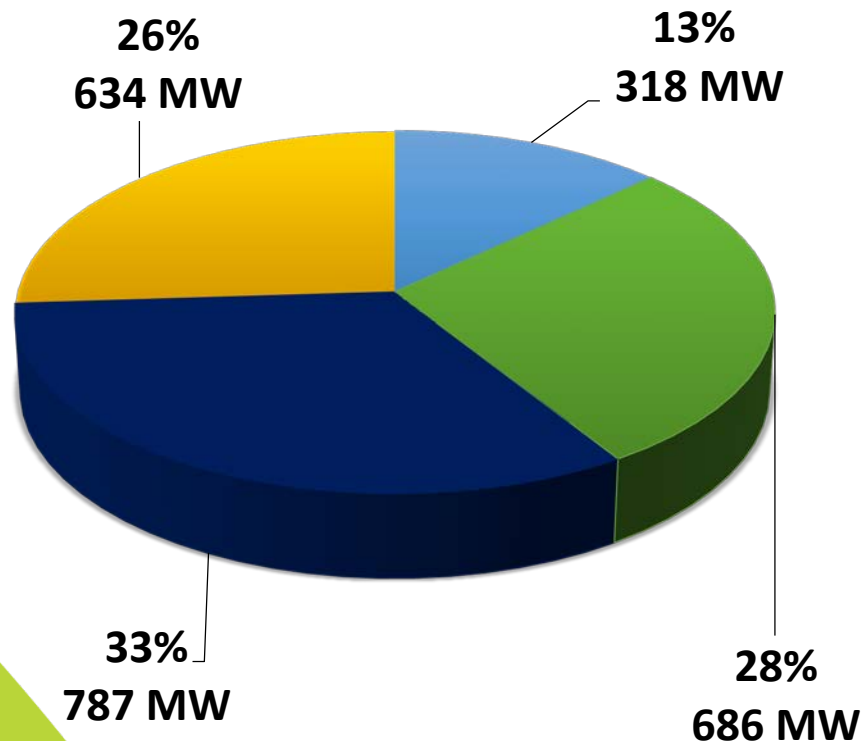
| Grid-Connected RE Targets  | 2020            | 2030            |
|--|-----------------|-----------------|
| RE share in total ECOWAS electricity mix (incl. large hydro)     | 35%             | 48%             |
| RE share in total ECOWAS generation capacity (excl. large hydro) | 10%<br>2.425 MW | 19%<br>7.606 MW |

| Rural RE Targets   | 2020               | 2030                |
|--|--------------------|---------------------|
| Rural population supplied by mini-grids and stand-alone system | 22%                | 25%                 |
| Mini-Grids to be installed                                     | 60,000<br>3,600 MW | 128,000<br>7,680 MW |
| Population served with improved stoves                         | 60%                | 100%                |
| Population with access to LPG                                  | 17%                | 32%                 |



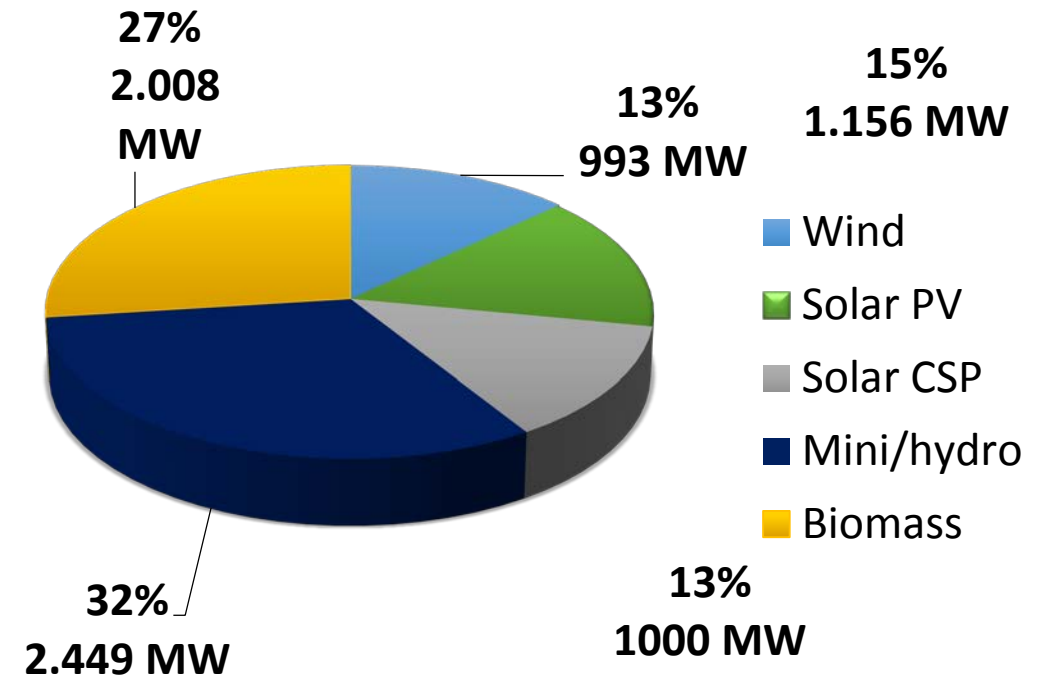
# Regional RE Targets by 2020 & 2030

Installed RE Capacity 2020  
2,425 MW



- Wind
- Solar PV
- Solar CSP
- Mini/hydro
- Biomass

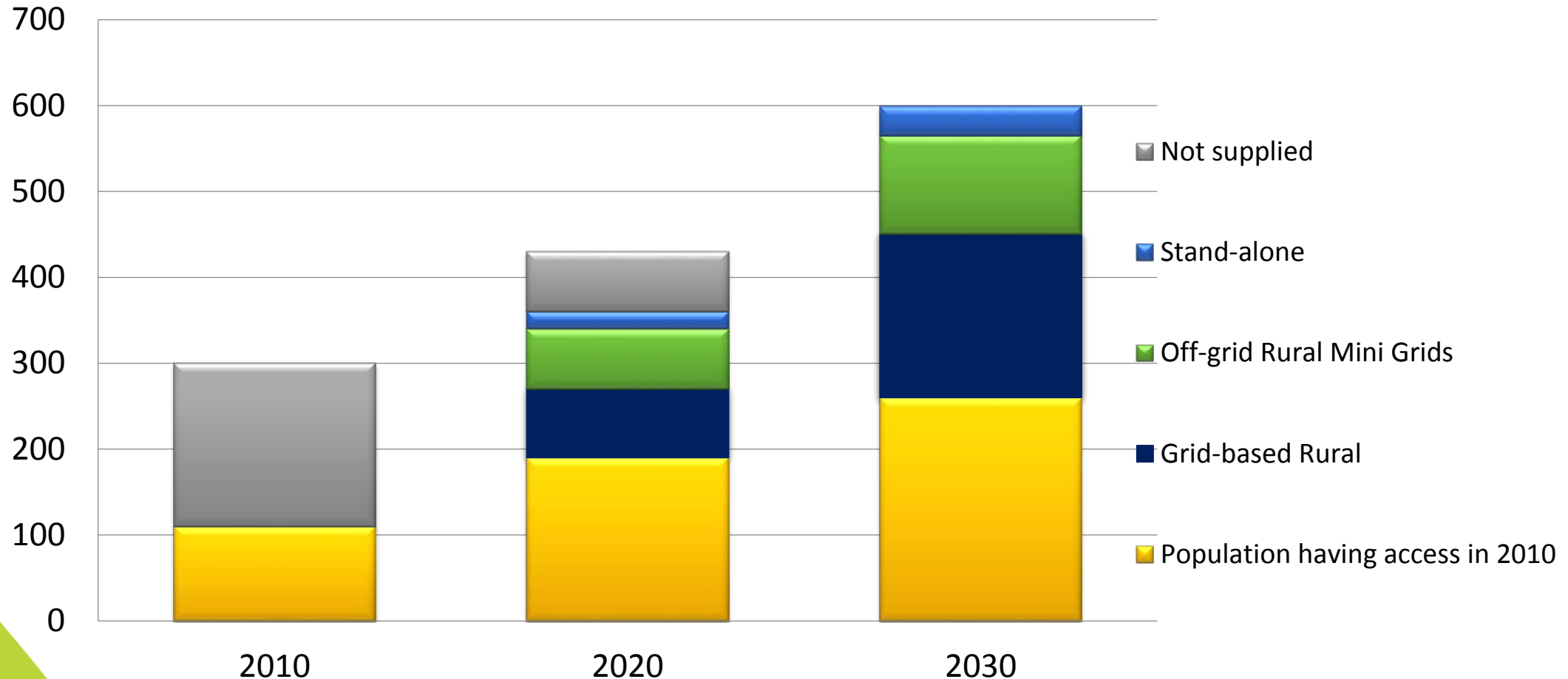
Installed RE Capacity 2030  
7,606 MW



- Wind
- Solar PV
- Solar CSP
- Mini/hydro
- Biomass

# Electricity Access Targets by 2020 & 2030

Population in mio inhbts





# THE ECOWAS EE POLICY TARGETS

The overall objective of the Regional EE policy is to improve by 2020, the energy efficiency of the ECOWAS region so as to attain levels comparable to those of world leaders

The specific target of the regional policy is to double the rate of energy efficiency by implementing efficiency measures that free-up 2000 MW of power generation capacity by 2020

- **lighting:** phase out inefficient incandescent bulbs by 2020;
- **electricity distribution:** reduce electricity distribution losses from the current level of 15 -40% to under 10% by 2020;
- **cooking:** achieve universal access to safe, clean, affordable, efficient and sustainable cooking for the entire population of ECOWAS, by 2030;
- **standards and labels:** establish an ECOWAS Technical Committee for Energy Efficiency Standards and Labelling, and adopt initial region-wide standards and labels for major energy equipment by end 2014;
- **Buildings:** develop and adopt region-wide efficiency standards for buildings
- **Finance:** create instruments for financing sustainable energy, including carbon finance



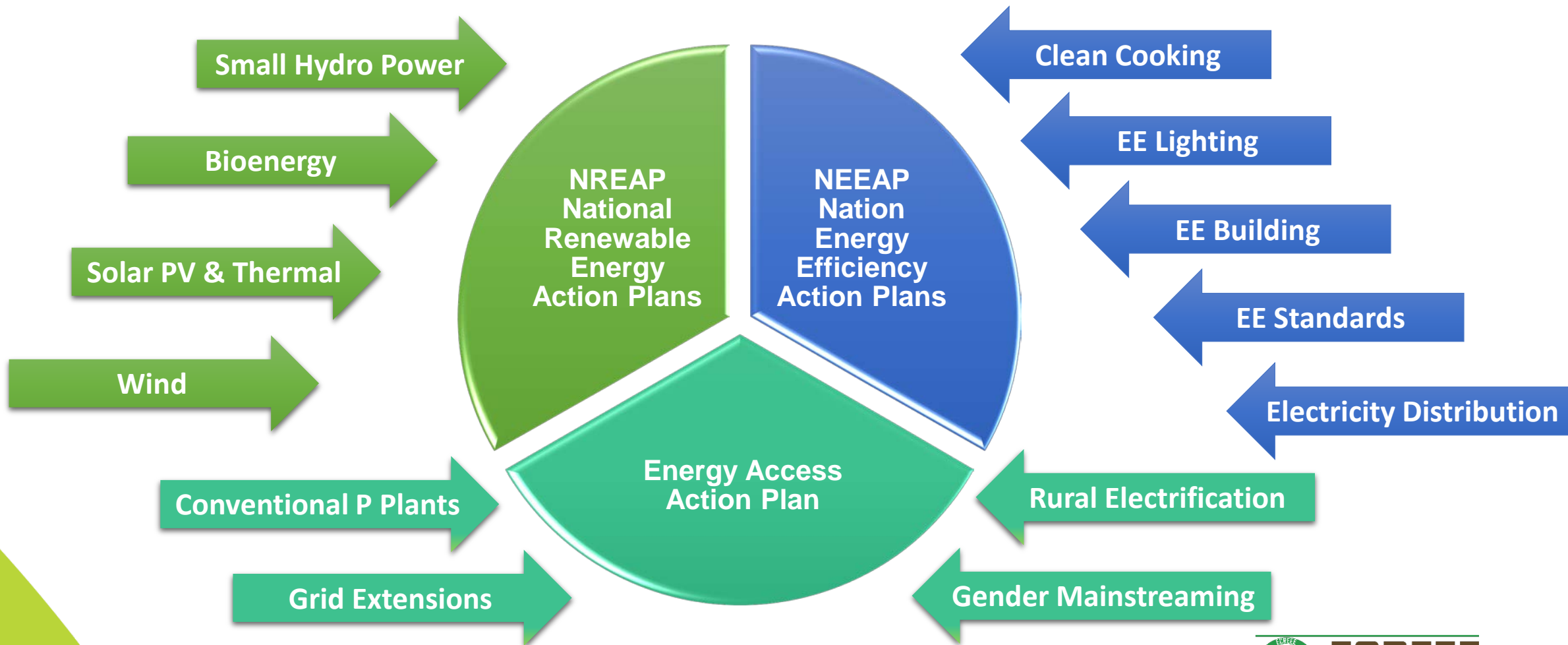
Use of bioclimatic architecture principles



# Regional Implementation Framework

*Based on a mandate by the ECOWAS authorities to coordinate the implementation of the RE & EE Regional Policies as well the SE4ALL Initiative in West Africa, ECREEE, with support of partners, is assisting ECOWAS Member States to develop a coherent and aligned roadmaps for SE4All in ECOWAS MS.*

# The NREAPs, NEEAPs and National SE4ALL Action Agenda Process



# Development of National RE and EE Action Plans and the SE4ALL Action Agenda in Member States

Regional RE and EE Policies and SE4ALL

National RE, EE and SE4ALL Action Plans and Policy Framework

Implementation at the national and regional levels



## ECREEE SUPPORT TO THE Action Plan PROCESS

- Development of the Action Plan Templates;
- **15 national consultants to assist Member States** with the development of the Action Plans;
- **Team of international experts** to provide on-going support;
- Support towards the organisation of national Kick Off and Validation meetings;
- Review and quality assurance
- Organization of **Regional Concerted Actions** to facilitate regular exchange and collaboration among the Member States;
- Support towards formulation/revision of national RE & EE policies, laws, regulations;
- Support towards detailed resources assessment and grid capacity;
- Assist in the development of portfolios of bankable projects, project preparatory activities and mobilisation of investment.



Austrian  
Development Cooperation



**giz** Deutsche Gesellschaft für Internationale Zusammenarbeit (GIZ) GmbH



**IRENA**  
International Renewable Energy Agency



# Next Steps

- Validation of National RE & EE Action Plans and SE4ALL Action Agendas across the 15 ECOWAS Member States
- Development of National RE & EE Policies and Regulations where non-existent
- Development of Investment Prospectuses
- Implementation of the regional policies at national levels
- Monitoring of Progress – 2020/2030



Thank You

Mahama Kappiah  
Executive Director

**ECREEE Secretariat**

Achada Santo Antonio  
Electra Building, 2nd floor  
C.P. 288, Praia, Cape Verde  
Tel: +238 2604630, +238 2624608  
Email: [info@ecreee.org](mailto:info@ecreee.org)  
Skype: info-ecreee  
Website: [www.ecreee.org](http://www.ecreee.org)