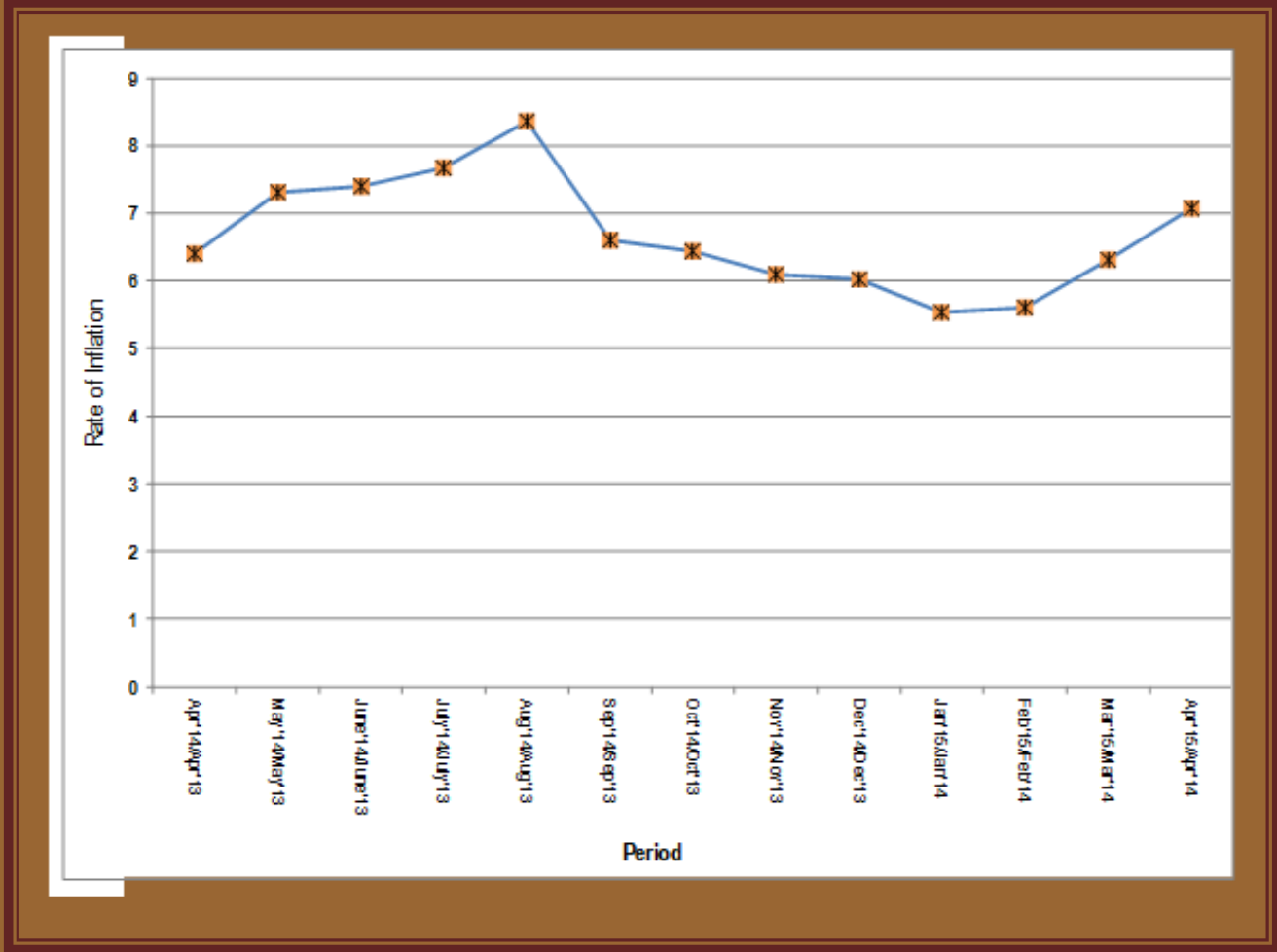


LEADING ECONOMIC INDICATOR

LEADING ECONOMIC INDICATOR



APRIL 2015

LIST OF TABLES

Page Number

| | |
|---|----|
| Table 1(a): Kenya Consumer Price Indices..... | 7 |
| Table 1(b): Kenya Inflation rate | 8 |
| Table 2: Mean Foreign Exchange rates of Kenyan Shilling against Selected Major Currencies at the end of the Month | 10 |
| Table 3: Interest rates (%)..... | 11 |
| Table 4: Nairobi Securities Exchange..... | 12 |
| Table 5 (a): Money Supply | 14 |
| Table 5b: Gross Foreign Exchange Reserves..... | 15 |
| Table 6: Coffee Sales and Prices | 17 |
| Table 7: Tea Production and Auction Prices | 18 |
| Table 8: Cane Deliveries | 19 |
| Table 9(a): Monthly Retail Prices for dry Maize, 2014 (per Kg) | 20 |
| Table 9(b): Monthly Retail Prices for dry Maize, 2015 (per Kg)..... | 21 |
| Table 9(c): Average Monthly Retail Prices for dry Beans, 2014 (per Kg) | 22 |
| Table 9(d): Average Monthly Retail Prices for dry Beans, 2015 (per Kg)..... | 23 |
| Table 10: Exports of Coffee and Tea | 24 |
| Table 11: Monthly Exports of Fresh Horticultural Produce | 25 |
| Table 12: External Trade | 26 |
| Table 13(a): Major Destinations of Domestic Exports | 27 |
| Table 13 (b): Domestic Exports by Broad Economic Category | 28 |
| Table 14(a): Major Origins of Imports | 29 |
| Table 14 (b): Imports by Broad Economic Category | 30 |
| Table 15(a): Local Electricity Generation by Source | 31 |
| Table 15(b): Generation and Consumption of electricity | 33 |
| Table 15 (c): Consumption of Petroleum Fuels | 35 |
| Table 15 (d): Average Retail Prices for Selected Fuel Products within Nairobi | 36 |
| Table 15 (e): Average Retail Prices for Selected Fuels in Kenya | 37 |
| Table 15(f): Murban ADNOC Crude Oil Prices | 39 |
| Table 16: Value of Building Plans Approved by Nairobi City County Planning Compliance & Enforcement Department | 39 |
| Table 17(a): Domestic Production of Sugar | 41 |
| Table 17(b): Production of Soft Drinks | 41 |
| Table 17(c): Production of Assembled Vehicles | 42 |
| Table 17(d): Production of Galvanized Sheets..... | 42 |
| Table 17(e): Cement Production and Consumption | 43 |
| Table 17(f): Milk Intakes in the Formal Sector..... | 44 |
| Table 18: Visitor Arrivals through J.K.I.A and M.I.A..... | 45 |
| Table (19a): Jomo Kenyatta international airport-Embarked Passengers by Port of Destination..... | 47 |
| Table (19b): Jomo Kenyatta international airport- Landed Passengers by Port of Origin | 48 |
| Table19 (c): New Vehicle Registration..... | 49 |

LIST OF FIGURES

Page Number

| | |
|---|----|
| Fig. 1: Inflation rates | 9 |
| Fig 2: End of Month Mean Exchange rate of Kenya Shillings against Major Selected Currencies | 10 |
| Fig. 3: Nairobi Securities Exchange 20 Share Index | 13 |
| Fig 4: Foreign Exchange Reserves | 16 |
| Fig.5: Coffee Sales at the Nairobi Coffee Exchange | 17 |
| Fig.6: Tea Production | 18 |
| Fig.7: Cane Deliveries | 19 |
| Fig.8: Electricity Generation by Source | 32 |
| Fig. 9: Electricity Generation, Consumption and Power Losses | 34 |
| Fig. 10: Average Prices for Liquefied Petroleum Gas in Kenya | 38 |
| Fig 11: Trends for Murban ADNOC Crude Oil Prices | 39 |
| Fig. 12: Milk Intake in the Formal Sector | 44 |
| Fig. 13: Visitor Arrivals through J.K.I.A and M.I.A | 46 |

KEY HIGHLIGHTS

OVERVIEW

The Leading Economic Indicators for the month of April 2015 highlights trends in Consumer Price Indices (CPI) and inflation, interest rates, exchange rates, international trade, agriculture, energy, manufacturing, building and construction, tourism and transport.

MACROECONOMIC INDICATORS

Consumer Price Index (CPI) increased from 155.86 points in March 2015 to 158.70 points in April 2015. The overall rate of inflation expanded from 6.31 per cent to 7.08 per cent during the same period. In April 2015, the Kenyan Shilling depreciated against all the major currencies except for the Ugandan shilling.

The average yield rate for the 91-day Treasury bills, which is a benchmark for the general trend of interest rates, declined to 8.42 per cent in April 2015. The inter-bank rates rose to 8.93 per cent during the period.

The Nairobi Securities Exchange 20 share index decreased from 5,346 points in March 2015 to 5,091 points in April 2015, while the total number of shares traded dropped from 614 million to 488 million shares during the same period. The total value of NSE shares traded contracted from KSh 20.52 billion to KSh 14.64 billion over the same period. Broad money supply (M3), a key indicator for monetary policy formulation expanded from KSh 2,399.02 billion in March 2015 to KSh 2,448.96 billion in April 2015. Gross Foreign Exchange Reserves increased from KSh 906.04 billion in March 2015 to KSh 923.84 billion in April 2015. Net Foreign Exchange Reserves expanded from KSh 463.84 billion to KSh 468.07 billion over the same period.

A). AGRICULTURE

The quantity of coffee auctioned at the Nairobi Coffee Exchange declined from 5,571 MT in March 2015 to 3,713 MT in April 2015 while the average auction price dropped from KSh 378.17 per kilogram to KSh 310.48 per kilogram over the same period. The quantity of processed tea declined from 24,276 MT in February 2015 to 15,688 MT in March 2015. The price of processed tea increased from KSh 221.42 to KSh 249.85 per kilogram over the same period.

Average price for dry maize rose from KSh 35.05 per kilogram in March 2015 to KSh 35.20 per kilogram in April 2015. The average price per Kilogram for dry beans in April 2015 was KSh 84.96. Milk deliveries to formal processors declined from 42.4 million litres in February 2015 to 30.1 million litres in March 2015.

B). INTERNATIONAL TRADE

Quantity of coffee exported contracted from 4,289.5 MT in March 2015 to 3,948.3 MT in April 2015 while its value decreased from KSh 2,025.1 million to KSh 1,900.5 million over the same period. The quantity of tea exported decreased to 28,262.1 MT in April 2015, while its value dropped from KSh 8,796.1 million to KSh 7,189.1 million over the same period.

Volume of trade increased from KSh 162.6 billion in March 2015 to KSh 169.7 billion in April 2015. The total value of exports fell to KSh 39,880.9 million. The value of imports increased from KSh 114,862.5 million in March 2015 to KSh 129,842.2 million in April 2015. Domestic exports by Broad Economic Category (BEC) indicated that food and beverages was the main export category in April 2015 accounting for 43.1 per cent of exports, while the value of non-food industrial supplies and consumer goods not elsewhere specified registered 27.5 and 25.8 per cent shares, respectively. BEC imports indicate that industrial supplies (non-food) was the main import category in April 2015 with a share of 31.1 per cent, while the values of fuel and lubricants, machinery & other capital equipment and transport equipment registered shares of 14.8, 18.6 and 17.4 per cent respectively. Food and beverage recorded a share of 7.4 per cent while consumer goods not elsewhere specified recorded a share of 8.6 per cent.

C). ENERGY

Total electricity generation contracted from 772.11 million KWh in March 2015 to 751.95 million KWh in April 2015. The domestic consumption of electricity rose from 645.60 million KWh to 704.22 million KWh during the same period.

In the international market, the price of Murban crude oil increased from an average of US Dollars 56.10 per barrel in March, 2015 to US Dollars 60.55 per barrel in April 2015. The national average domestic retail oil prices of motor gasoline premium dropped from KSh 90.34 per litre in March, 2015 to KSh 90.22 per litre retailed in April, 2015. The price of light diesel rose to retail at KSh 78.44 in April, 2015 from KSh 77.16 in April, 2015. The average price for Kerosene increased to retail at KSh 58.17 from KSh 56.71 during the same period. Charcoal prices increased from KSh 73.39 to KSh 74.66 during the period. The price of a 13-Kg cylinder of gas averaged KSh 2,529.56 in April, 2015.

D). MANUFACTURING, BUILDING AND CONSTRUCTION

The quantity of cement produced increased from 465,471 MT in February 2015 to 533,294 MT in March 2015. Consumption of cement increased from 417,591 MT in February 2015 to 465,956 MT in March 2015. Production of assembled vehicles decreased from 949 units in February 2015 to 988 units in March 2015.

E). TOURISM AND TRANSPORT

The total number of visitors arriving through Jomo Kenyatta (JKIA) and Moi International Airports (MIA) decreased from 73,079 in March 2015 to 53,983 in April 2015. The number of passengers who landed at Jomo Kenyatta International Airport (JKIA) increased slightly from 181,501 in February 2015 to 181,653 in March 2015, while passengers who embarked contracted from 183,107 persons to 182,807 persons in the same period. The total number of vehicles registered contracted from 25,067 in March 2015 to 20,730 in April 2015. Motor cycles and station wagons accounted for 44.8 and 30.8 per cent respectively of total motor vehicles registered in April 2015.

Table 1(a): Kenya Consumer Price Indices

Kenya CPI: Base period February 2009=100

| Group | Nairobi | Nairobi | Nairobi | Nairobi Combined | Rest of Urban Areas | Kenya CPI |
|-------------|-----------------|------------------|-----------------|---------------------|------------------------|--------------|
| | Lower Income | Middle Income | Upper Income | | | |
| 2014 | | | | | | |
| January | 148.47 | 131.93 | 134.11 | 143.94 | 146.42 | 145.40 |
| February | 148.75 | 131.99 | 134.32 | 144.16 | 147.21 | 145.95 |
| March | 149.36 | 132.79 | 134.63 | 144.81 | 147.87 | 146.61 |
| April | 150.57 | 133.22 | 135.10 | 145.80 | 149.88 | 148.20 |
| May | 151.51 | 133.91 | 136.39 | 146.69 | 151.81 | 149.70 |
| June | 151.39 | 134.48 | 136.83 | 146.76 | 152.12 | 149.91 |
| July | 151.71 | 135.45 | 137.30 | 147.25 | 152.95 | 150.60 |
| August | 153.51 | 135.76 | 139.94 | 148.72 | 154.33 | 152.02 |
| September | 153.64 | 135.48 | 139.46 | 148.72 | 154.71 | 152.24 |
| October | 153.18 | 135.33 | 138.22 | 148.31 | 154.45 | 151.92 |
| November | 152.88 | 134.97 | 138.03 | 148.00 | 154.55 | 151.85 |
| December | 154.08 | 135.60 | 136.74 | 148.97 | 154.99 | 152.51 |
| 2015 | | | | | | |
| January | 155.65 | 136.19 | 136.86 | 150.24 | 155.67 | 153.43 |
| February | 156.51 | 136.25 | 136.66 | 150.87 | 156.42 | 154.14 |
| March | 158.81 | 137.09 | 137.07 | 152.75 | 158.04 | 155.86 |
| April | 161.85 | 137.74 | 137.67 | 155.12 | 161.2 | 158.70 |
| May | 162.09 | 138.95 | 138.93 | 155.63 | 163.03 | 159.98 |

Notes

1. Nairobi Lower Income group - Households spending less than KSh 23,670 in October 2005

2. Nairobi Middle Income Group- Households spending between KSh 23,671 to KSh 119,999 in October 2005

3. Nairobi Upper Income Group - Households spending above KSh 120,000 in October 2005

Rest of Urban areas includes Mombasa, Malindi, Machakos, Nyeri, Thika, Nakuru, Kisii, Kisumu, Eldoret, Nyahururu, Garissa and Bungoma.

Table 1(b): Kenya Inflation rate

| Inflation Rates | | | | | | |
|-----------------|----------------------|-----------------------|----------------------|------------------|---------------------|-----------|
| Period | Nairobi Lower Income | Nairobi Middle Income | Nairobi Upper Income | Nairobi Combined | Rest of Urban Areas | Kenya CPI |
| Jan'14/Jan'13 | 7.16 | 5.44 | 5.89 | 6.73 | 7.54 | 7.21 |
| Feb'14/Feb'13 | 6.46 | 4.93 | 5.84 | 6.10 | 7.38 | 6.86 |
| Mar'14/Mar'13 | 5.80 | 4.65 | 5.38 | 5.53 | 6.78 | 6.27 |
| Apr'14/Apr'13 | 5.36 | 4.43 | 5.64 | 5.16 | 7.27 | 6.41 |
| May'14/May'13 | 6.07 | 5.37 | 7.18 | 5.95 | 8.23 | 7.30 |
| June'14/June'13 | 6.10 | 6.06 | 7.81 | 6.15 | 8.25 | 7.39 |
| July'14/July'13 | 6.13 | 6.19 | 8.04 | 6.21 | 8.68 | 7.67 |
| Aug'14/Aug'13 | 7.49 | 6.39 | 9.58 | 7.32 | 9.07 | 8.36 |
| Sep'14/Sep'13 | 4.84 | 3.34 | 5.19 | 4.52 | 8.04 | 6.60 |
| Oct'14/Oct'13 | 4.79 | 3.38 | 4.33 | 4.46 | 7.79 | 6.43 |
| Nov'14/Nov'13 | 4.50 | 3.30 | 4.25 | 4.22 | 7.37 | 6.09 |
| Dec'14/Dec'13 | 4.87 | 3.61 | 3.19 | 4.53 | 7.05 | 6.02 |
| Jan'15/Jan'14 | 4.83 | 3.22 | 2.05 | 4.38 | 6.32 | 5.53 |
| Feb'15/Feb'14 | 5.22 | 3.23 | 1.74 | 4.66 | 6.26 | 5.61 |
| Mar'15/Mar'14 | 6.32 | 3.24 | 1.81 | 5.48 | 6.88 | 6.31 |
| Apr'15/Apr'14 | 7.49 | 3.39 | 1.90 | 6.39 | 7.55 | 7.08 |
| May'15/May'14 | 6.98 | 3.76 | 1.86 | 6.09 | 7.39 | 6.87 |

Fig. 1: Inflation rates

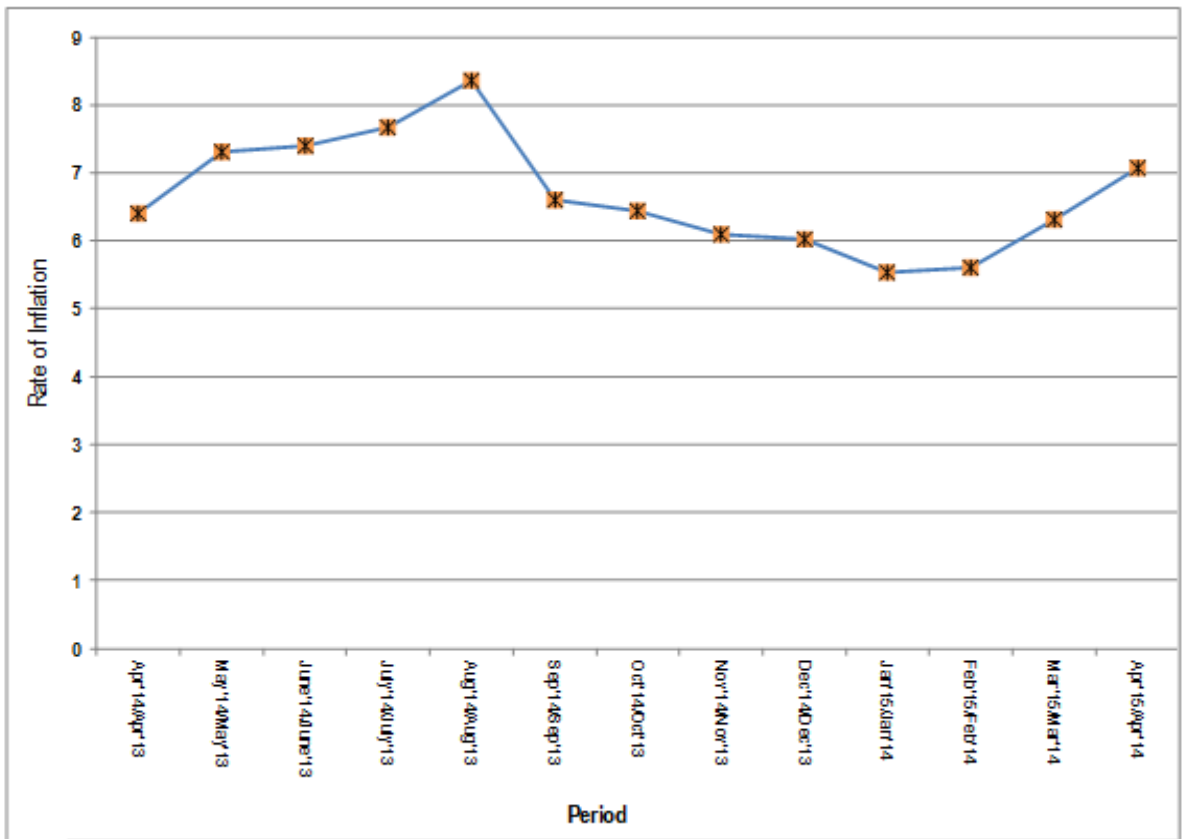


Table 2: Mean* Foreign Exchange rates of Kenyan Shilling against Selected Major Currencies at the end of the Month

| Year | 2014 | | | | | | | | | 2015 | | | | |
|------------------|--------|--------|--------|--------|--------|--------|--------|--------|--------|--------|--------|--------|--------|--------|
| Currency | April | May | June | July | Aug | Sep | Oct | Nov | Dec | Jan | Feb | March | April | May |
| 1 US Dollar | 86.72 | 87.41 | 87.61 | 87.77 | 88.11 | 88.92 | 89.23 | 89.96 | 90.44 | 91.36 | 91.45 | 91.70 | 93.44 | 96.39 |
| 1 Sterling Pound | 145.08 | 147.29 | 148.15 | 150.04 | 147.24 | 145.15 | 143.62 | 142.05 | 141.45 | 138.49 | 138.39 | 137.51 | 139.62 | 149.10 |
| 1 Euro | 119.78 | 120.09 | 119.16 | 119.02 | 117.4 | 114.74 | 113.15 | 112.28 | 111.52 | 106.32 | 99.45 | 99.27 | 100.71 | 107.54 |
| 100 Japanese Yen | 84.59 | 85.84 | 85.88 | 86.32 | 85.63 | 82.9 | 82.57 | 77.53 | 75.79 | 77.19 | 75.80 | 76.30 | 78.18 | 79.89 |
| 1 SA Rand | 8.2 | 8.39 | 8.2 | 8.22 | 8.26 | 8.12 | 8.04 | 8.10 | 7.89 | 7.89 | 7.60 | 7.60 | 7.78 | 8.06 |
| USHS/KES | 29.19 | 28.97 | 29.44 | 29.97 | 29.66 | 29.55 | 30.02 | 30.37 | 30.62 | 31.29 | 32.34 | 20.09 | 32.04 | 31.17 |
| TSHS/KES | 18.86 | 18.92 | 19.18 | 18.97 | 18.89 | 18.85 | 18.95 | 19.16 | 19.11 | 19.39 | 20.08 | 32.19 | 20.28 | 20.98 |

Source: Central Bank of Kenya

* Mean of commercial banks buying and selling exchange rates prevailing at the end of the month

Fig 2: End of Month Mean Exchange rate of Kenya Shillings against Major Selected Currencies

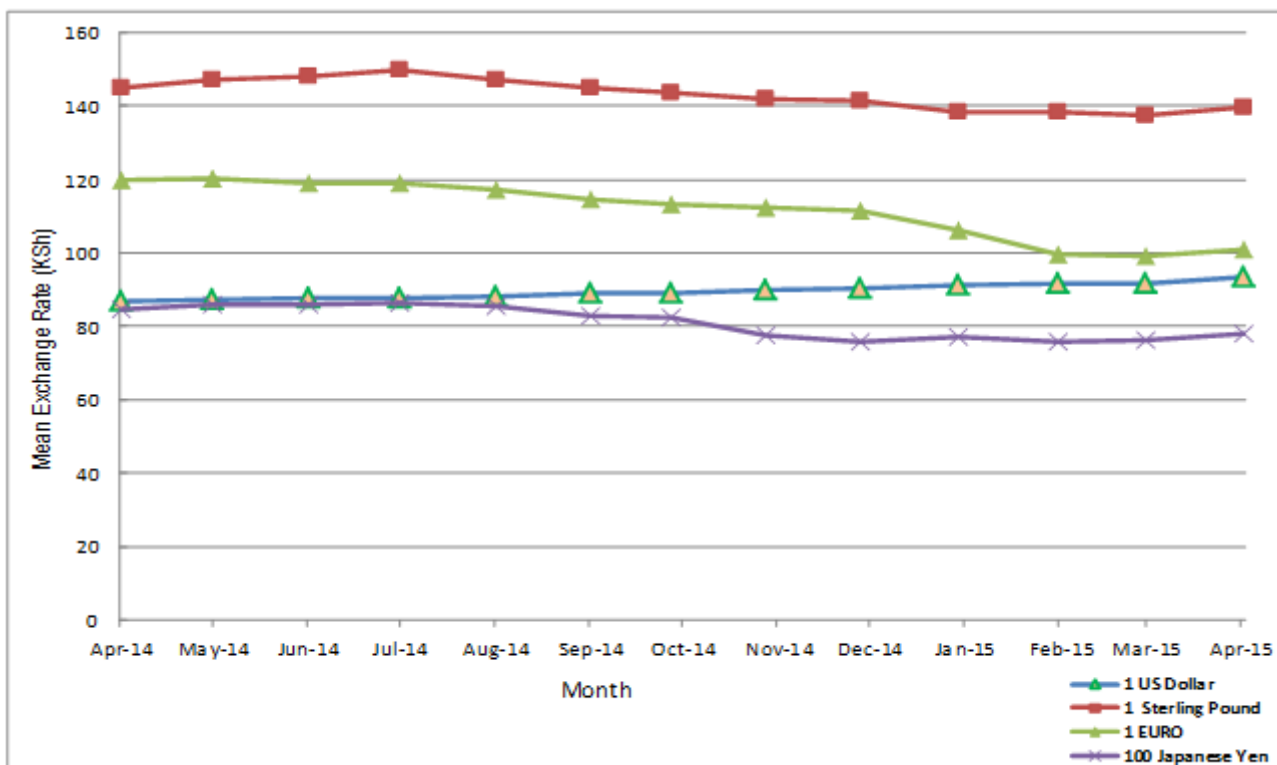


Table 3: Interest rates (%)

| Month/Year | Average Yield Rates 91 - Days Treasury Bills | Rates for Commercial Banks Loans and Advances (Weighted Average) | Overdraft Rates | Inter - Bank Rates | Savings (Commercial Banks Rates) |
|-------------|--|---|--------------------|-----------------------|---|
| 2013 | | | | | |
| January | 8.08 | 18.13 | 17.97 | 5.89 | 1.65 |
| February | 8.38 | 17.84 | 17.68 | 9.05 | 1.61 |
| March | 9.88 | 17.73 | 17.54 | 8.76 | 1.42 |
| April | 10.38 | 17.87 | 17.71 | 7.87 | 1.45 |
| May | 9.46 | 17.45 | 17.60 | 7.15 | 1.53 |
| June | 6.21 | 16.97 | 16.92 | 7.22 | 1.73 |
| July | 5.92 | 17.02 | 17.00 | 7.99 | 1.64 |
| August | 10.03 | 16.96 | 16.89 | 8.96 | 1.67 |
| September | 9.58 | 16.86 | 16.42 | 7.82 | 1.64 |
| October | 9.72 | 17.00 | 16.96 | 10.68 | 1.63 |
| November | 9.94 | 16.89 | 16.50 | 10.76 | 1.58 |
| December | 9.52 | 16.99 | 16.51 | 9.12 | 1.58 |
| 2014 | | | | | |
| January | 9.26 | 17.03 | 16.82 | 10.65 | 1.56 |
| February | 9.16 | 17.06 | 16.88 | 9.06 | 1.49 |
| March | 8.98 | 16.91 | 16.44 | 6.63 | 1.56 |
| April | 8.80 | 16.70 | 16.44 | 7.57 | 1.53 |
| May | 8.82 | 16.97 | 17.85 | 7.77 | 1.54 |
| June | 9.81 | 16.36 | 15.88 | 6.95 | 1.50 |
| July | 9.78 | 16.91 | 17.12 | 8.07 | 1.33 |
| August | 8.29 | 16.26 | 16.20 | 11.79 | 1.50 |
| September | 8.38 | 16.04 | 15.79 | 7.43 | 1.51 |
| October | 8.67 | 16.00 | 15.77 | 6.76 | 1.55 |
| November | 8.64 | 15.94 | 15.66 | 6.93 | 1.52 |
| December | 8.58 | 15.99 | 15.86 | 6.92 | 1.85 |
| 2015 | | | | | |
| January | 8.59 | 15.93 | 15.95 | 7.24 | 1.58 |
| February | 8.59 | 15.47 | 15.67 | 6.91 | 1.53 |
| March | 8.49 | 15.46 | 15.68 | 6.84 | 1.53 |
| April | 8.42 | 15.40 | 15.52 | 8.93 | 1.90 |

Source: Central Bank of Kenya

Table 4: Nairobi Securities Exchange

Base Jan 1966=100

| Month | Number of Transactions | Number of Shares (Million) | Value of Shares (Million KSh) | NSE 20 Share Index |
|-------------|------------------------|----------------------------|-------------------------------|--------------------|
| 2013 | | | | |
| January | 32,416 | 519.0 | 8,464 | 4,417 |
| February | 31,529 | 692.0 | 14,693 | 4,519 |
| March | 34,443 | 571.0 | 11,183 | 4,861 |
| April | 39,859 | 597.0 | 9,856 | 4,765 |
| May | 39,727 | 868.0 | 16,070 | 5,006 |
| June | 34,587 | 728.0 | 13,021 | 4,598 |
| July | 34,341 | 616.0 | 11,205 | 4,788 |
| August | 33,957 | 670.0 | 20,797 | 4,698 |
| September | 31,849 | 489.0 | 10,062 | 4,793 |
| October | 39,915 | 804.0 | 15,937 | 4,936 |
| November | 43,129 | 645.0 | 13,129 | 5,101 |
| December | 30,575 | 466.0 | 11,329 | 4,927 |
| 2014 | | | | |
| January | 49,348 | 639.0 | 15,970 | 4,856 |
| February | 39,160 | 545.0 | 14,743 | 4,933 |
| March | 42,604 | 544.0 | 13,042 | 4,946 |
| April | 40,979 | 728.0 | 15,750 | 4,949 |
| May | 47,131 | 854.0 | 23,022 | 4,882 |
| June | 38,483 | 731.0 | 18,190 | 4,885 |
| July | 41,506 | 625.0 | 15,043 | 4,906 |
| August | 46,933 | 629.0 | 15,513 | 5,139 |
| September | 67,891 | 767.0 | 19,241 | 5,256 |
| October | 54,955 | 506.0 | 19,287 | 5,195 |
| November | 42,617 | 666.0 | 14,341 | 5,156 |
| December | 37,384 | 900.0 | 31,583 | 5,113 |
| 2015 | | | | |
| January | 39,813 | 414.0 | 9,715 | 5,212 |
| February | 42,387 | 593.0 | 16,109 | 5,491 |
| March | 44,715 | 614.0 | 20,516 | 5,346 |
| April | 36,148 | 488.0 | 14,642 | 5,091 |

Source: Nairobi Securities Exchange Limited

Fig. 3: Nairobi Securities Exchange 20 Share Index

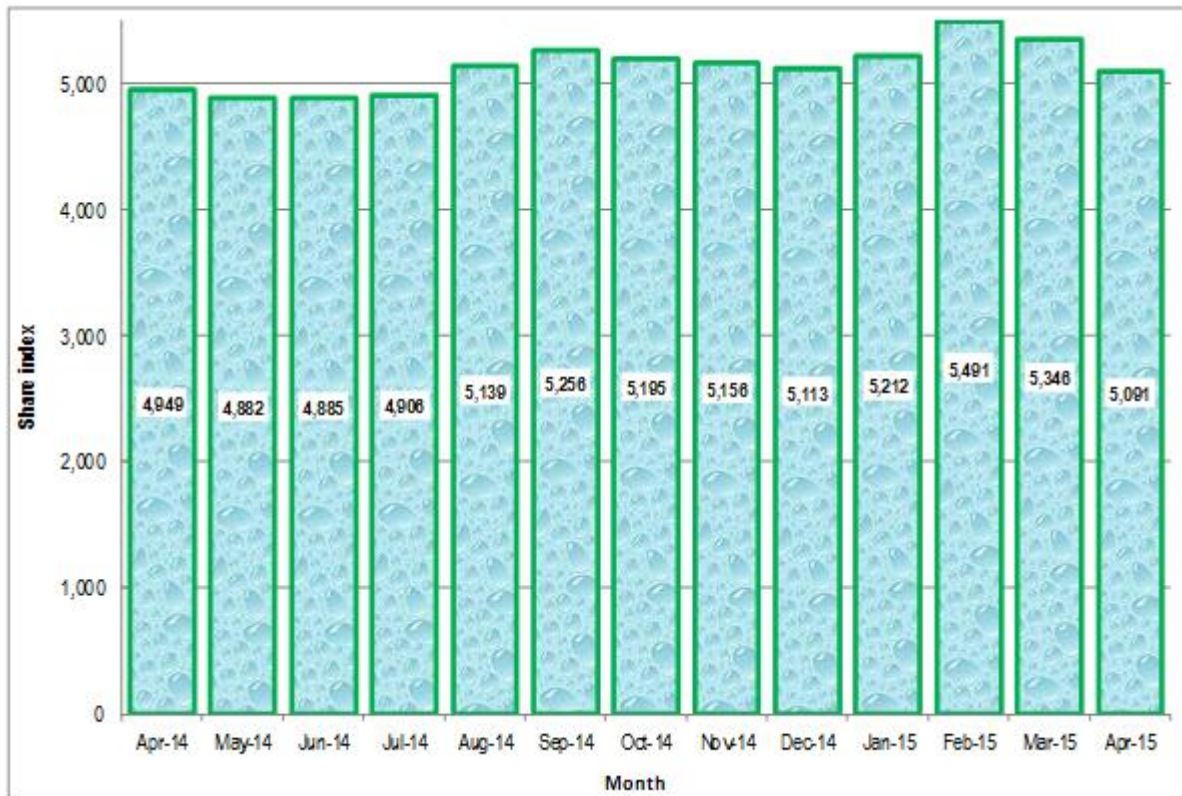


Table 5 (a): Money Supply

KSh Million

| As at end of month | Money and Quasi-money (M2)**** | | | Foreign currency deposits | Broad Money (M3)*** | % Change |
|--------------------|--------------------------------|--|------------|---------------------------|---------------------|----------|
| | Money (M1)* | Quasi - Money (Commercial Banks and NBFIs**) | Total (M2) | | | |
| 2013 | | | | | | |
| January | 704,022 | 751,954 | 1,455,976 | 273,921 | 1,729,897 | 0.15 |
| February | 715,446 | 755,794 | 1,471,240 | 276,650 | 1,747,890 | 1.04 |
| March | 720,697 | 756,980 | 1,477,677 | 278,064 | 1,755,742 | 0.45 |
| April | 753,865 | 778,776 | 1,532,641 | 269,639 | 1,802,280 | 2.65 |
| May | 751,365 | 792,372 | 1,543,737 | 279,660 | 1,823,398 | 1.17 |
| June | 752,825 | 795,056 | 1,547,882 | 272,998 | 1,820,879 | -0.14 |
| July | 756,360 | 797,643 | 1,554,003 | 281,800 | 1,835,803 | 0.82 |
| August | 758,948 | 816,575 | 1,575,523 | 274,451 | 1,849,974 | 0.77 |
| September | 802,365 | 814,854 | 1,617,220 | 268,561 | 1,885,780 | 1.94 |
| October | 810,932 | 806,740 | 1,617,672 | 282,522 | 1,900,194 | 0.76 |
| November | 828,451 | 829,784 | 1,658,235 | 295,386 | 1,953,621 | 2.81 |
| December | 827,069 | 844,526 | 1,671,594 | 324,647 | 1,996,241 | 2.18 |
| 2014 | | | | | | |
| January | 843,803 | 855,649 | 1,699,452 | 327,116 | 2,026,568 | 1.52 |
| February | 860,767 | 873,046 | 1,733,813 | 296,674 | 2,030,487 | 0.19 |
| March | 868,067 | 890,708 | 1,758,775 | 301,539 | 2,060,314 | 1.47 |
| April | 881,421 | 898,725 | 1,780,146 | 320,464 | 2,100,610 | 1.96 |
| May | 901,172 | 926,839 | 1,828,011 | 319,467 | 2,147,478 | 2.23 |
| June | 913,017 | 925,120 | 1,838,137 | 313,996 | 2,152,133 | 0.22 |
| July | 899,431 | 946,625 | 1,846,056 | 344,019 | 2,190,075 | 1.76 |
| August | 918,416 | 972,656 | 1,891,072 | 362,244 | 2,253,316 | 2.89 |
| September | 903,124 | 990,209 | 1,893,333 | 358,429 | 2,251,762 | -0.07 |
| October | 915,658 | 999,059 | 1,914,717 | 345,306 | 2,260,023 | 0.37 |
| November | 940,488 | 1,013,094 | 1,953,582 | 341,768 | 2,295,350 | 1.56 |
| December | 936,440 | 1,045,706 | 1,982,146 | 348,119 | 2,330,265 | 1.52 |
| 2015 | | | | | | |
| January | 939,593 | 1,048,480 | 1,988,073 | 362,943 | 2,351,016 | 0.89 |
| February | 946,469 | 1,085,445 | 2,031,914 | 376,143 | 2,408,057 | 2.43 |
| March | 971,266 | 1,075,760 | 2,047,026 | 351,992 | 2,399,018 | -0.38 |
| April | 983,976 | 1,087,715 | 2,071,691 | 377,268 | 2,448,959 | 2.08 |

Source: Central Bank of Kenya

* Currency in circulation less cash in banks plus all demand deposits except those of National & County government, Banks, non-residents and foreign currency deposits

** All other deposits in commercial banks, except those of National government.

*** Broad Money (M3) includes M2 and Foreign currency deposits

****Broad money (M2) is the sum of M1, Quasi money in Banks and Quasi money in NBFIs..

Table 5b: Gross Foreign Exchange Reserves*

| KSh Million | | | | | | | |
|-------------|----------------------------|-----------------------|---------|------------------|------|-------------|--|
| Month | Central Monetary Authority | | Total | Foreign Assets | | Gross Total | Net of Foreign Exchange Liabilities [^] |
| | Central Bank | National Government** | | Commercial Banks | NBFI | | |
| 2013 | | | | | | | |
| January | 473,167 | 1,861 | 475,028 | 160,150 | 1 | 635,179 | 349,592 |
| February | 450,973 | 1,794 | 452,767 | 154,317 | 4 | 607,088 | 330,028 |
| March | 463,445 | 1,761 | 465,206 | 136,203 | 13 | 601,422 | 321,314 |
| April | 504,608 | 1,732 | 506,340 | 137,122 | 20 | 643,482 | 354,299 |
| May | 528,465 | 1,743 | 530,208 | 149,688 | 14 | 679,910 | 375,949 |
| June | 530,844 | 1,764 | 532,608 | 154,809 | 9 | 687,426 | 362,989 |
| July | 543,986 | 1,816 | 545,803 | 158,064 | 72 | 703,939 | 385,102 |
| August | 540,160 | 1,824 | 541,984 | 141,909 | 72 | 683,965 | 378,141 |
| September | 548,918 | 1,842 | 550,760 | 144,535 | 81 | 695,375 | 374,637 |
| October | 533,552 | 1,864 | 535,416 | 135,915 | 62 | 671,394 | 366,527 |
| November | 550,239 | 1,892 | 552,131 | 135,697 | 130 | 687,957 | 364,982 |
| December | 571,969 | 1,888 | 573,861 | 165,976 | 31 | 739,864 | 389,179 |
| 2014 | | | | | | | |
| January | 574,742 | 1,875 | 576,617 | 164,383 | 140 | 741,141 | 391,514 |
| February | 574,712 | 1,894 | 576,605 | 144,343 | 139 | 721,090 | 372,898 |
| March | 580,864 | 1,894 | 582,758 | 140,478 | 214 | 723,451 | 372,445 |
| April | 594,010 | 1,909 | 595,919 | 158,854 | 97 | 754,873 | 393,529 |
| May | 577,369 | 1,918 | 579,287 | 152,086 | 229 | 731,604 | 365,323 |
| June | 760,343 | 1,927 | 762,270 | 161,602 | 249 | 924,115 | 531,346 |
| July | 700,165 | 1,909 | 702,074 | 166,986 | 159 | 869,230 | 490,984 |
| August | 699,415 | 1,905 | 701,319 | 169,489 | 873 | 871,681 | 483,215 |
| September | 694,807 | 1,879 | 696,686 | 148,158 | 665 | 845,509 | 448,401 |
| October | 672,382 | 1,873 | 674,255 | 139,471 | - | 813,726 | 420,129 |
| November | 665,469 | 1,871 | 667,340 | 152,448 | 226 | 820,014 | 420,895 |
| December | 723,279 | 1,861 | 725,140 | 166,939 | 967 | 893,046 | 481,515 |
| 2015 | | | | | | | |
| January | 702,738 | 1,832 | 704,570 | 185,797 | 158 | 890,525 | 473,974 |
| February | 713,564 | 1,827 | 715,391 | 195,345 | 151 | 910,887 | 488,461 |
| March | 707,206 | 1,827 | 709,033 | 196,899 | 111 | 906,043 | 463,835 |
| April | 704,648 | 1,827 | 706,475 | 217,211 | 151 | 923,837 | 468,068 |

Source: Central Bank of Kenya

* Includes encumbered reserves

**National Government includes reserve position in the Fund and deposits with Crown Agents.

[^] Revised

Fig 4: Foreign Exchange Reserves

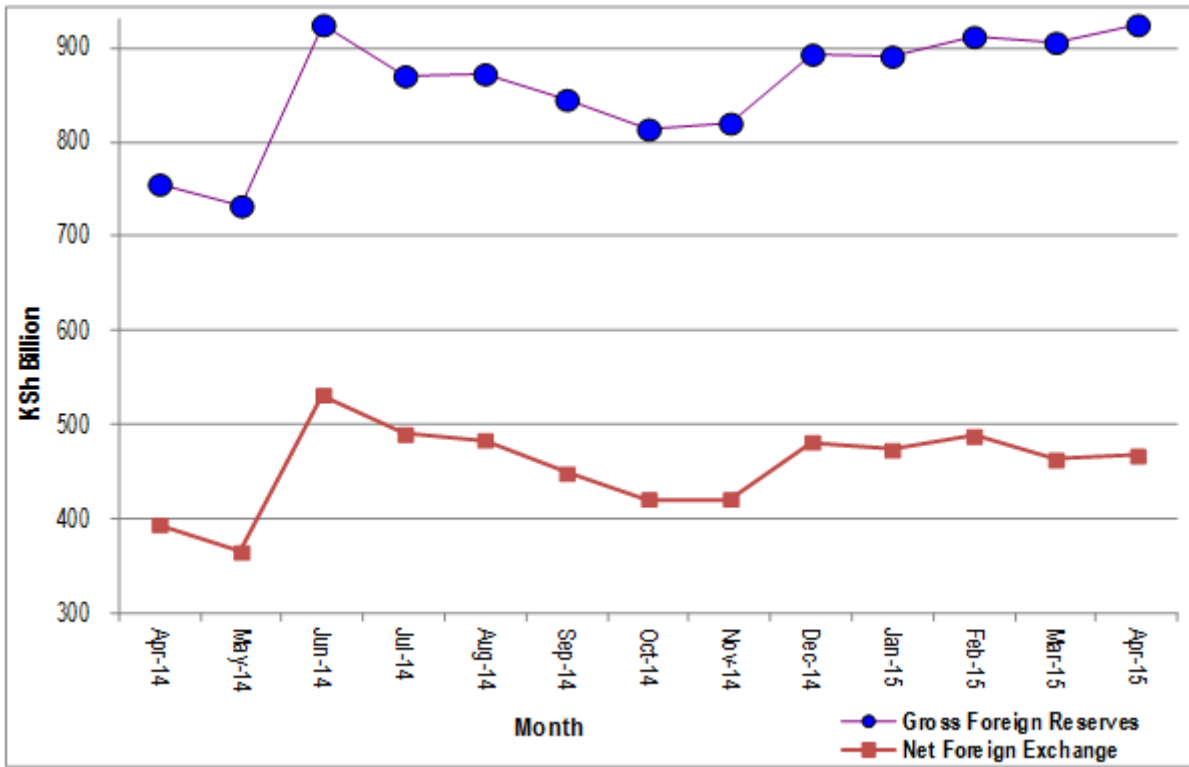


Table 6: Coffee Sales and Prices*

| Month | 2013 | | | 2014 | | | 2015*** | | |
|---------------|---------------|----------------|-----------------|-----------------|----------------|-----------------|---------------|----------------|-----------------|
| | QUANTITY (MT) | PRICE (\$ /kg) | PRICE (Ksh /kg) | QUANTITY (MT) | PRICE (\$ /kg) | PRICE (Ksh /kg) | QUANTITY (MT) | PRICE (\$ /kg) | PRICE (Ksh /kg) |
| January | 3,938 | 3.96 | 344.17 | 2,850 | 3.40 | 293.39 | 2,795 | 4.51 | 411.64 |
| February | 4,825 | 3.66 | 319.70 | 5,382 | 4.62 | 398.62 | 4,837 | 5.35 | 489.32 |
| March | 4,074 | 3.81 | 326.86 | 6,212 | 5.31 | 459.34 | 5,571 | 4.12 | 378.17 |
| April | 6,038 | 3.31 | 278.70 | 6,611 | 4.52 | 392.22 | 3,713 | 3.32 | 310.48 |
| May | 4,482 | 2.73 | 229.85 | 3,747 | 3.99 | 349.47 | | | |
| June | 2,307 | 2.43 | 208.10 | 2,860 | 4.09 | 357.96 | | | |
| July** | 830 | 2.89 | 250.59 | 1,292 | 3.59 | 314.67 | | | |
| August | 3,411 | 3.39 | 296.97 | 3,214 | 4.33 | 381.16 | | | |
| September | 2,442 | 3.28 | 286.47 | 3,424 | 4.55 | 404.29 | | | |
| October | 1,580 | 2.81 | 239.37 | 2,801 | 4.74 | 422.76 | | | |
| November | 1,882 | 2.97 | 255.55 | 1,703 | 4.56 | 410.25 | | | |
| December | 2,133 | 3.18 | 274.39 | 2,354 | 4.58 | 414.00 | | | |
| Annual | 3,162 | 3.20 | 275.89 | 3,537.50 | 4.36 | 383.18 | | | |

Source: Coffee Directorate

* Auction Price

NB: MT denotes Metric Tonnes

*** Provisional

** Nairobi Coffee Exchange was in recess for most of July 2013

Fig.5: Coffee Sales at the Nairobi Coffee Exchange



Table 7: Tea Production and Auction Prices

| Months | 2012 | | | 2013 | | | 2014 | | | 2015* | | |
|-----------|----------|---------|----------|----------|---------|----------|----------|---------|----------|----------|---------|----------|
| | QUANTITY | PRICE | PRICE | QUANTITY | PRICE | PRICE | QUANTITY | PRICE | PRICE | QUANTITY | PRICE | PRICE |
| | (MT) | (\$/Kg) | (KSh/Kg) | (MT) | (\$/Kg) | (KSh/Kg) | (MT) | (\$/Kg) | (KSh/Kg) | (MT) | (\$/Kg) | (KSh/Kg) |
| January | 36,205 | 2.91 | 250.22 | 45,390 | 3.28 | 284.11 | 44,970 | 2.74 | 235.57 | 41,653 | 2.32 | 211.8 |
| February | 18,412 | 2.95 | 245.01 | 38,503 | 3.09 | 270.61 | 33,774 | 2.35 | 202.55 | 24,276 | 2.42 | 221.42 |
| March | 17,859 | 3.03 | 251.24 | 33,368 | 2.81 | 240.73 | 33,336 | 2.16 | 186.93 | 15,688 | 2.72 | 249.85 |
| April | 18,118 | 3.08 | 256.13 | 38,230 | 2.50 | 210.09 | 39,975 | 2.16 | 187.59 | | | |
| May | 37,383 | 3.14 | 264.26 | 39,600 | 2.56 | 214.54 | 41,186 | 2.06 | 179.49 | | | |
| June | 30,197 | 3.29 | 279.45 | 30,530 | 2.44 | 208.59 | 31,945 | 2.03 | 177.90 | | | |
| July | 24,306 | 3.42 | 287.79 | 26,229 | 2.44 | 211.89 | 30,790 | 2.28 | 199.85 | | | |
| August | 31,920 | 3.42 | 287.71 | 26,338 | 2.38 | 208.13 | 26,756 | 2.17 | 191.27 | | | |
| September | 33,549 | 3.31 | 279.69 | 32,800 | 2.19 | 191.06 | 33,321 | 2.01 | 178.32 | | | |
| October | 40,235 | 3.20 | 272.10 | 44,283 | 2.05 | 174.39 | 45,368 | 2.02 | 180.48 | | | |
| November | 39,977 | 3.24 | 277.26 | 35,463 | 2.17 | 186.71 | 38,614 | 2.02 | 181.71 | | | |
| December | 41,401 | 3.27 | 281.47 | 41,719 | 2.45 | 211.62 | 45,071 | 2.01 | 181.87 | | | |
| Annual | 369,562 | 3.19 | 269.36 | 432,453 | 2.53 | 217.71 | 37,092 | 2.17 | 190.29 | | | |

Source: Tea Directorate
 MT denotes Metric Tonnes
 *Provisional

Fig.6: Tea Production

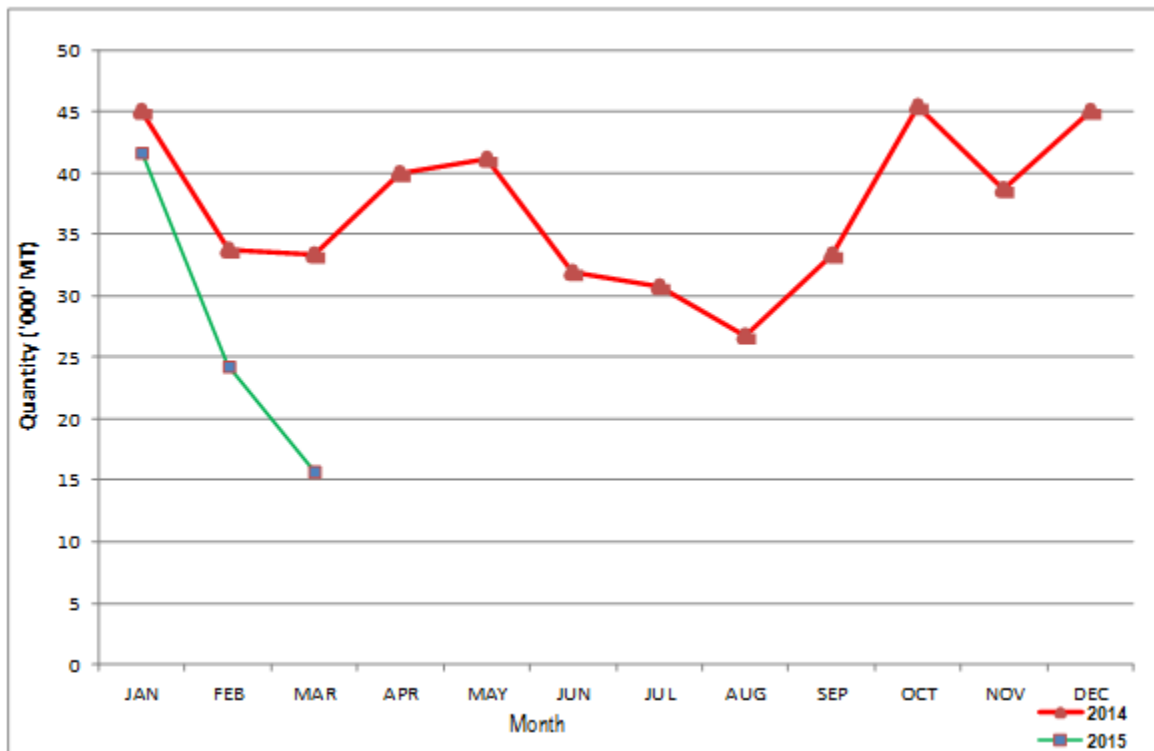


Table 8: Cane Deliveries

| 000 Metric Tonnes | | | | |
|-------------------|-----------------|-----------------|-----------------|-----------------|
| Month | 2011 | 2012 | 2013 | 2014* |
| January | 540.53 | 601.90 | 564.50 | 693.47 |
| February | 537.61 | 565.90 | 530.00 | 620.51 |
| March | 582.05 | 605.50 | 516.70 | 645.88 |
| April | 542.74 | 469.30 | 442.70 | 543.85 |
| May | 490.58 | 369.20 | 414.80 | 533.67 |
| June | 452.20 | 571.40 | 583.40 | 523.75 |
| July | 301.60 | 438.00 | 639.50 | 593.20 |
| August | 314.03 | 466.40 | 622.30 | 547.65 |
| September | 328.10 | 371.90 | 543.10 | 533.43 |
| October | 330.59 | 370.90 | 569.40 | 467.11 |
| November | 415.98 | 432.20 | 657.50 | 369.34 |
| December | 502.56 | 453.70 | 587.90 | 405.79 |
| Total | 5,338.56 | 5,716.30 | 6,671.70 | 6,477.65 |

Source: Sugar Directorate
 * Provisional

Fig.7: Cane Deliveries

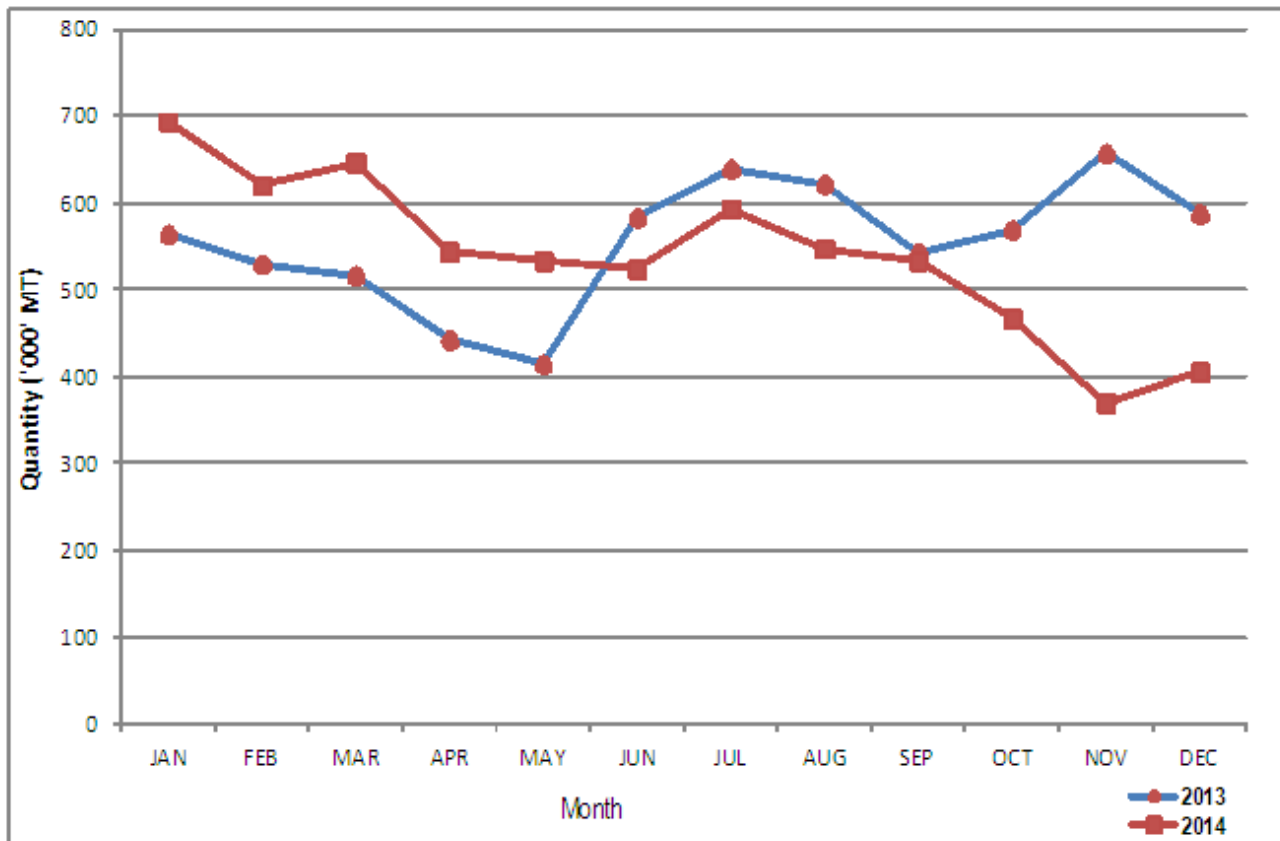


Table 9(b): Monthly Retail Prices for dry Maize, 2015 (per Kg)-

| Market/Month | JAN | FEB | MAR | APR | MAY |
|----------------|--------------|--------------|--------------|--------------|--------------|
| Kiambu | 40.00 | 40.00 | 40.00 | - | - |
| Limuru | 40.00 | 40.00 | 40.00 | - | - |
| Thika | 50.00 | 49.38 | 42.50 | 50.00 | - |
| Gatundu | 43.83 | 43.80 | - | - | - |
| Kutus | 32.99 | 28.59 | - | 29.72 | 32.00 |
| Sagana | 32.02 | 31.10 | - | 32.02 | 36.36 |
| Kerugoya | 32.45 | 31.52 | - | 34.78 | 34.78 |
| Muthithi | 30.52 | - | 31.82 | 32.39 | 36.36 |
| Makuyu | - | 33.33 | 33.33 | 34.52 | - |
| Kiriaini | - | 35.00 | 35.00 | 37.08 | - |
| Engineer | 40.00 | 40.00 | 36.00 | - | - |
| Nyeri | 39.62 | 38.89 | 42.73 | 37.86 | - |
| Endarasha | 40.95 | 42.86 | 37.37 | - | - |
| Karatina | 34.17 | 35.52 | 37.64 | 39.05 | - |
| Gakindu | - | 35.59 | 33.33 | 33.33 | - |
| Nanyuki | 44.57 | 44.20 | 34.56 | 47.23 | 47.92 |
| Nyahururu | 34.32 | - | 27.27 | - | - |
| Malindi | 31.50 | 30.00 | 34.00 | 37.00 | - |
| Ukunda | 30.00 | 30.00 | 32.00 | 43.33 | 45.00 |
| Kwale | 40.00 | 38.89 | 38.75 | 40.00 | 40.00 |
| Mkunguni | - | 60.00 | 55.00 | 50.00 | - |
| Mwembe Tayari | 45.00 | 41.75 | 43.25 | 41.75 | - |
| Majengo | 38.00 | 41.25 | 45.00 | 40.00 | 42.00 |
| Sega | 38.25 | 35.00 | 37.50 | 43.75 | 40.00 |
| Kongowea | 34.40 | 30.00 | 30.00 | 54.33 | - |
| Runyenjes | 32.95 | - | 27.27 | 27.78 | 31.82 |
| Embu Town | 32.95 | - | 28.79 | 31.25 | 36.36 |
| Siakago | 33.33 | - | 31.82 | 31.82 | 36.36 |
| Mwingi | 27.40 | 28.00 | 27.00 | 30.25 | - |
| Kalundu | 28.00 | 27.00 | 27.50 | 33.00 | - |
| Machakos Town | 32.50 | 30.00 | 31.00 | 40.83 | 35.00 |
| Tawa | - | - | 26.00 | 30.67 | 32.00 |
| Tala | 28.00 | 30.00 | 28.00 | 26.38 | 28.00 |
| Maua | - | 30.00 | 30.56 | 36.25 | - |
| Kianjai | - | 29.26 | 29.51 | 33.33 | - |
| Gakoromere | 33.33 | - | 27.78 | 28.47 | 33.33 |
| Chuka Town | 39.10 | 41.97 | 37.84 | - | - |
| Kaanwa | 30.51 | - | - | - | - |
| Wote | - | - | 28.50 | 34.00 | - |
| Wajir Town | 52.50 | 61.25 | - | 55.00 | 50.00 |
| Marsabit | 41.80 | - | 38.00 | 38.50 | - |
| Daraja Mbili | 31.25 | 28.41 | 27.43 | - | - |
| Kibingo | 27.18 | 27.08 | 32.29 | 37.50 | - |
| Nyangusu | 27.27 | 27.27 | 27.27 | - | - |
| Riochanda | 22.83 | 27.18 | 29.35 | - | - |
| Nyabite | 31.94 | 26.00 | 32.00 | 35.42 | - |
| Mogonga | 36.36 | 27.27 | 27.27 | - | - |
| Igare | 34.78 | 28.09 | 35.63 | - | - |
| Kibuye | 30.22 | 27.17 | 29.37 | 30.43 | - |
| Ahero | - | 25.28 | 29.50 | 29.80 | - |
| Kiboswa | 32.18 | 28.94 | 29.35 | 28.26 | - |
| Sondu | - | 25.68 | 29.34 | - | - |
| Bondo | 27.67 | 22.92 | - | - | - |
| Siaya | 27.23 | - | - | - | - |
| Ngija | - | 23.89 | - | - | - |
| Unguja | 26.43 | - | - | - | - |
| Kegonga | 25.00 | - | - | - | - |
| Homabay | 28.04 | 31.04 | 31.26 | 36.57 | - |
| Oyugis | 27.21 | 28.47 | 30.67 | 33.33 | - |
| Kehacha | 24.00 | - | - | - | - |
| Migori | 24.00 | - | - | - | - |
| Kabarnet | 27.78 | 27.78 | 33.33 | 38.89 | 38.89 |
| Kimulot | - | 27.46 | 31.27 | - | - |
| Sotik | - | 29.11 | 31.51 | - | - |
| Bomet | - | 30.80 | 31.00 | - | - |
| Muthurwa Narok | 29.00 | 32.50 | 36.50 | 40.00 | - |
| Nakuru Town | 40.00 | 47.50 | 50.00 | - | - |
| Kapsabet | 30.43 | 29.35 | 30.43 | 30.43 | - |
| Kitale | 22.92 | 22.92 | 22.92 | 29.17 | - |
| Eldoret | 30.00 | 27.00 | 27.50 | 30.00 | 32.00 |
| Burn Forest | 31.00 | 30.63 | 35.00 | 35.63 | 35.00 |
| Turbo | 20.00 | 20.00 | 24.00 | 31.63 | 35.00 |
| Kipkaren | 20.00 | 20.00 | 24.00 | 32.13 | 35.00 |
| Iten | 30.94 | 30.00 | 30.00 | 33.75 | 35.00 |
| Kajiado | 40.00 | 40.00 | 40.00 | 40.00 | 40.00 |
| Bungoma Town | 28.57 | 27.14 | 28.94 | 36.36 | 40.91 |
| Kimilili | - | 23.91 | 26.22 | - | - |
| Kapsokwony | 21.98 | 21.98 | 24.36 | 20.41 | - |
| Bumala | 26.67 | 27.38 | 30.16 | 30.95 | 33.33 |
| Busia Town | 31.43 | 23.81 | 25.93 | 31.55 | 33.33 |
| Butere | 27.27 | 27.12 | 27.87 | 29.55 | 35.23 |
| Kakamega | 28.20 | 27.27 | 31.82 | 33.18 | 36.36 |
| Mumias | 27.21 | 27.27 | 28.34 | 31.82 | 34.09 |
| Mundeta | 25.00 | 24.76 | 25.40 | 31.63 | 33.33 |
| Cheptula | 25.00 | 23.81 | 28.57 | 31.97 | 35.71 |
| Mbale | 23.81 | 23.81 | 26.19 | 30.16 | 33.33 |
| Muthurwa | 45.00 | 43.48 | 45.45 | 47.62 | 50.00 |
| Kawangware | 42.86 | 42.86 | 45.00 | 45.45 | 50.00 |
| Burma | 45.00 | 45.00 | 50.00 | 45.45 | 50.00 |
| Gikomba | 45.57 | 42.86 | - | - | - |
| Kangemi | 42.86 | 42.86 | 45.45 | 45.45 | 45.45 |
| Korokocho | 44.72 | 43.27 | 44.72 | 46.54 | 46.54 |
| Toi | 45.00 | 45.45 | 50.00 | 47.62 | 50.00 |
| Total | 32.59 | 32.16 | 33.05 | 35.20 | 36.68 |

Table 9(d): Average Monthly Retail Prices for dry Beans, 2015 (per Kg)

| Market/Month | JAN | FEB | MAR | APR | MAY |
|----------------|--------------|--------------|--------------|--------------|--------------|
| Kiambu | 69.14 | 80.00 | 80.00 | | |
| Limuru | 80.00 | 80.00 | 80.00 | | |
| Thika | 77.00 | 77.50 | 79.38 | 90.00 | |
| Gatundu | 75.95 | 74.94 | - | | |
| Kutus | 64.00 | 67.51 | - | 82.96 | 84.37 |
| Sagana | 63.75 | 63.55 | - | 77.17 | 78.26 |
| Kerugoya | 66.68 | 65.22 | - | 78.00 | 81.82 |
| Muthithi | 63.64 | | 68.18 | 77.27 | 77.27 |
| Makuyu | 60.87 | 63.77 | 63.05 | 69.32 | - |
| Kiriaini | | 66.87 | 68.18 | 80.31 | |
| Engineer | 90.00 | 90.00 | | - | - |
| Nyeri | 99.21 | 96.00 | 94.79 | 98.05 | - |
| Endarasha | 82.81 | 87.00 | 94.25 | | - |
| Karatina | 80.75 | 90.90 | 97.86 | 97.70 | - |
| Gakindu | | 73.53 | 74.99 | 76.16 | - |
| Nanyuki | 89.64 | 75.66 | 89.39 | 103.22 | 98.16 |
| Nyahururu | 71.09 | 69.93 | 80.30 | - | - |
| Kaloleni | 80.00 | - | - | - | - |
| Malindi | 78.00 | 78.75 | 79.00 | 79.00 | |
| Kibauni Kilifi | 75.00 | - | - | - | - |
| Ukunda | 71.00 | 78.75 | 76.00 | 78.33 | 85.00 |
| Kwale | 72.00 | 70.00 | 76.25 | 76.67 | 75.00 |
| Mkunguni | | 90.00 | 90.00 | 90.00 | |
| Mwembe Tayari | 94.00 | 98.75 | 91.25 | 88.75 | |
| Majengo | 77.50 | 80.00 | 85.00 | 85.00 | 85.00 |
| Sega | 77.50 | 75.00 | 76.25 | 83.75 | 85.00 |
| Kongowea | 72.00 | 70.00 | 73.75 | 81.25 | |
| Runyenjes | 65.47 | 62.50 | 65.33 | 66.20 | 64.53 |
| Embu Town | 63.12 | 62.86 | 66.31 | 68.48 | 65.22 |
| Siakago | 54.89 | 57.50 | 70.83 | 62.50 | 65.22 |
| Mwingi | 68.13 | 76.40 | 78.00 | 74.94 | |
| Kalundu | 70.00 | 68.89 | 77.14 | 89.17 | |
| Machakos Town | 70.00 | 68.57 | 79.38 | 85.00 | 90.00 |
| Tawa | | 67.50 | 72.50 | 81.67 | 85.00 |
| Tala | 63.75 | 68.33 | 72.50 | 80.00 | 80.00 |
| Maua | 65.00 | 65.00 | 69.44 | 76.88 | |
| Kianjai | 65.28 | 62.96 | 78.40 | 84.03 | |
| Gakoromere | 77.22 | 75.70 | 75.69 | 85.42 | 88.89 |
| Chuka Town | 84.82 | 75.57 | 72.07 | - | - |
| Kaanwa | 82.37 | - | - | - | - |
| Wote | | 69.38 | 75.00 | 92.50 | |
| Wajir Town | 102.50 | 122.50 | | 120.00 | 120.00 |
| Marsabit | 72.00 | | 65.00 | 62.50 | |
| Daraja Mbili | 59.50 | 67.00 | 69.35 | - | - |
| Kibirigo | 58.00 | 72.00 | 80.00 | 72.00 | |
| Nyangusu | 52.17 | 52.17 | 49.04 | | |
| Riochanda | 62.50 | 72.92 | 102.09 | 80.77 | |
| Nyabite | 62.50 | 54.00 | 81.48 | 64.00 | |
| Mogonga | 65.22 | 60.87 | 60.87 | | |
| Igare | 58.00 | 66.97 | 69.38 | | |
| Kibuye | 64.46 | 68.84 | 74.75 | 72.92 | |
| Ahero | | 68.78 | 70.86 | 70.83 | |
| Kiboswa | 65.44 | 75.71 | 75.30 | 78.26 | |
| Sondu | | 70.25 | 74.11 | | |
| Bondo | 81.39 | 82.89 | | | |
| Siaya | 82.63 | | | | |
| Ngiya | | 71.83 | | | |
| Unguja | 65.41 | | | | |
| Kegonga | 54.81 | | | | |
| Homabay | 68.37 | 74.56 | 95.05 | 106.46 | |
| Oyugis | 65.92 | 70.18 | 81.81 | 88.69 | |
| Kehacha | 72.00 | | | | |
| Migori | 72.00 | | | | |
| Kabarnet | 88.89 | 88.89 | 111.11 | 111.11 | 111.11 |
| Kimulot | | 65.31 | 62.53 | | |
| Sotik | | 66.11 | 76.12 | | |
| Bomet | | 58.29 | 58.98 | | |
| Muthurwa Narok | 71.00 | 61.50 | 81.91 | 93.00 | |
| Nakuru Town | 80.00 | 80.00 | 80.00 | | |
| Kapsabet | 78.26 | 78.26 | 86.96 | 86.96 | |
| Kitale | 60.00 | 58.65 | 58.97 | 69.23 | |
| Eldoret | 82.73 | 76.14 | 80.57 | 93.18 | 90.91 |
| Burn Forest | 71.82 | 81.82 | 84.09 | 90.91 | 90.91 |
| Turbo | 73.75 | 82.50 | 87.50 | 95.00 | 100.00 |
| Kipkaren | 71.36 | 83.75 | 86.25 | 95.00 | 100.00 |
| Iten | 73.75 | 75.00 | 72.50 | 87.50 | 100.00 |
| Kajiado | 80.00 | 80.00 | 85.00 | 100.00 | 100.00 |
| Bungoma Town | 71.11 | 70.78 | 83.30 | 87.88 | 90.91 |
| Kimilili | | 67.84 | 65.69 | | |
| Kapsokwony | 61.55 | 72.04 | 57.36 | 58.25 | |
| Bumala | 59.05 | 65.47 | 65.08 | 93.34 | 95.24 |
| Busia Town | 88.00 | 100.00 | 99.00 | 98.13 | 97.50 |
| Butere | 70.88 | 60.93 | 80.43 | 87.64 | 103.89 |
| Kakamega | 74.80 | 73.68 | 86.37 | 102.52 | 113.01 |
| Mumias | 74.45 | 66.45 | 74.16 | 94.32 | 112.38 |
| Mundeta | 79.55 | 81.82 | 84.85 | 89.61 | 90.91 |
| Cheptula | 72.73 | 76.13 | 90.91 | 90.91 | 90.91 |
| Mbale | 77.27 | 77.27 | 81.82 | 81.82 | 81.82 |
| Muthurwa | 95.24 | 90.91 | 95.24 | 90.91 | 95.00 |
| Kawangware | 95.24 | 90.48 | 95.00 | 90.48 | 90.48 |
| Burma | 94.12 | 95.24 | 95.00 | 95.24 | 100.00 |
| Gikomba | 95.00 | 95.00 | 95.00 | 95.00 | 95.00 |
| Kangemi | 90.91 | 95.00 | 95.00 | 95.00 | 95.00 |
| Korokocho | 87.06 | 82.11 | 82.11 | 90.24 | 80.00 |
| Toi | 80.00 | 88.89 | 86.49 | 85.71 | 90.48 |
| Total | 74.20 | 74.95 | 77.54 | 84.96 | 88.61 |

-Data not available

Table 10: Exports of Coffee and Tea

| Month | Coffee* | | Tea | |
|-------------|---------------|---------------------|---------------|---------------------|
| | Quantity (MT) | Value (KSh Million) | Quantity (MT) | Value (KSh Million) |
| 2013 | | | | |
| January | 3,093.7 | 1,453.7 | 35,381.6 | 9,122.8 |
| February | 3,668.0 | 1,937.4 | 37,656.2 | 9,414.5 |
| March | 5,068.9 | 2,550.4 | 31,280.3 | 7,804.2 |
| April | 3,986.1 | 1,361.5 | 33,661.5 | 8,011.9 |
| May | 5,163.8 | 1,789.8 | 40,935.5 | 9,462.9 |
| June | 5,237.7 | 1,778.3 | 37,782.7 | 8,515.1 |
| July | 4,652.1 | 1,555.8 | 43,760.8 | 9,911.0 |
| August | 4,740.8 | 1,409.0 | 36,175.1 | 8,236.4 |
| September | 4,802.3 | 1,436.1 | 34,082.3 | 7,635.4 |
| October | 3,899.2 | 1,302.9 | 33,531.7 | 6,977.0 |
| November | 3,808.2 | 1,153.1 | 40,054.4 | 7,834.3 |
| December | 2,675.0 | 862.3 | 38,740.7 | 7,991.4 |
| 2014 | | | | |
| January | 3,168.9 | 1,054.8 | 38,651.9 | 8,784.3 |
| February | 3,077.9 | 1,117.6 | 33,514.1 | 7,316.6 |
| March | 4,583.6 | 1,533.2 | 37,642.4 | 7,937.6 |
| April | 4,858.3 | 2,013.3 | 37,439.0 | 7,781.7 |
| May | 4,593.6 | 2,024.2 | 36,215.5 | 7,380.0 |
| June | 4,587.4 | 2,006.8 | 39,010.7 | 7,692.3 |
| July | 5,424.5 | 2,383.4 | 42,393.4 | 8,468.0 |
| August | 3,313.1 | 1,473.6 | 38,120.5 | 7,974.2 |
| September | 3,944.1 | 1,722.0 | 35,960.6 | 7,243.6 |
| October | 3,617.7 | 1,645.1 | 37,637.2 | 7,444.3 |
| November | 3,717.9 | 1,747.0 | 38,275.2 | 7,594.6 |
| December | 2,550.9 | 1,192.3 | 41,631.3 | 8,378.6 |
| 2015 | | | | |
| January | 2,843.8 | 1,306.5 | 40,970.1 | 8,484.7 |
| February | 2,883.6 | 1,338.5 | 41,086.2 | 9,313.4 |
| March | 4,289.5 | 2,025.1 | 35,699.6 | 8,796.1 |
| April | 3,948.3 | 1,900.5 | 28,262.1 | 7,189.1 |

Source: Kenya Revenue Authority
 MT denotes Metric Tonnes
 *Unroasted Coffee

Table 11: Monthly Exports of Fresh Horticultural Produce

| Months | Cut Flowers | | | | Fruits | | | | Vegetables | | | |
|--------------|--------------------|---------------------|---------------|---------------------|------------------|---------------------|---------------|---------------------|------------------|---------------------|---------------|---------------------|
| | 2014* | | 2015 | | 2014* | | 2015 | | 2014* | | 2015 | |
| | Quantity (MT) | Value (KSh Million) | Quantity (MT) | Value (KSh Million) | Quantity (MT) | Value (KSh Million) | Quantity (MT) | Value (KSh Million) | Quantity (MT) | Value (KSh Million) | Quantity (MT) | Value (KSh Million) |
| January | 8,986.93 | 6,094.76 | 10,342.32 | 4,378.88 | 3,037.65 | 435.92 | 2,714.41 | 476.82 | 6,471.30 | 1,845.56 | 5,109.74 | 1,556.47 |
| February | 11,514.26 | 6,062.53 | 12,650.72 | 6,117.18 | 3,429.73 | 403.92 | 2,955.94 | 412.23 | 4,696.20 | 1,262.87 | 4,992.44 | 1,362.60 |
| March | 10,669.29 | 7,884.11 | 11,829.13 | 8,515.11 | 2,725.43 | 377.43 | 3,468.87 | 496.71 | 5,438.82 | 1,479.17 | 5,956.32 | 1,497.60 |
| April | 10,822.00 | 4,442.72 | | | 3,482.85 | 574.13 | | | 6,263.91 | 1,618.92 | | |
| May | 10,769.79 | 5,561.13 | | | 3,056.58 | 324.41 | | | 6,032.04 | 1,648.08 | | |
| June | 9,057.56 | 4,549.28 | | | 3,347.01 | 441.47 | | | 5,832.06 | 1,546.46 | | |
| July | 8,315.83 | 4,048.39 | | | 3,951.95 | 581.32 | | | 4,846.55 | 1,508.39 | | |
| August | 7,608.92 | 2,870.30 | | | 3,417.67 | 576.84 | | | 5,432.45 | 1,756.11 | | |
| September | 9,647.76 | 3,368.19 | | | 2,502.79 | 654.75 | | | 6,337.67 | 1,455.92 | | |
| October | 9,443.82 | 5,429.03 | | | 1,992.42 | 418.84 | | | 8,202.14 | 1,531.95 | | |
| November | 9,615.63 | 5,943.21 | | | 2,092.84 | 317.29 | | | 5,380.74 | 1,554.31 | | |
| December | 8,312.00 | 3,639.42 | | | 2,112.29 | 304.32 | | | 5,400.66 | 1,572.89 | | |
| Total | 114,763.784 | 59,893.07 | | | 35,149.21 | 5,410.64 | | | 70,334.54 | 18,780.63 | | |

Source: Horticultural Directorate
* Provisional

Table 12: External Trade

| KSh Million | | | | | | |
|-------------|------------------|------------|---------------|---------------|-----------------|------------------|
| Month | Domestic Exports | Re-Exports | Total Exports | Total Imports | Volume of Trade | Home use Imports |
| 2013 | | | | | | |
| January | 42,970.51 | 4,145.81 | 47,116.32 | 130,764.52 | 177,880.84 | 124,262.61 |
| February | 43,145.97 | 3,555.70 | 46,701.68 | 116,417.60 | 163,119.28 | 112,271.19 |
| March | 35,793.32 | 2,361.82 | 38,155.14 | 108,816.01 | 146,971.15 | 96,116.85 |
| April | 38,774.88 | 3,812.96 | 42,587.84 | 118,664.19 | 161,252.03 | 116,158.86 |
| May | 39,824.58 | 3,776.54 | 43,601.12 | 113,701.52 | 157,302.64 | 107,711.47 |
| June | 35,870.76 | 2,773.40 | 38,644.17 | 97,060.75 | 135,704.92 | 99,835.02 |
| July | 39,455.24 | 2,071.27 | 41,526.51 | 124,207.24 | 165,733.74 | 124,592.67 |
| August | 36,006.07 | 4,804.52 | 40,810.59 | 119,643.75 | 160,454.34 | 117,980.47 |
| September | 36,220.53 | 5,079.99 | 41,300.52 | 112,317.66 | 153,618.18 | 107,868.56 |
| October | 36,428.49 | 2,818.17 | 39,246.66 | 132,206.44 | 171,453.10 | 123,968.23 |
| November | 37,360.04 | 6,941.18 | 44,301.22 | 116,025.12 | 160,326.34 | 115,388.89 |
| December | 35,851.93 | 4,456.35 | 40,308.27 | 118,982.26 | 159,290.53 | 111,026.80 |
| 2014 | | | | | | |
| January | 37,962.47 | 5,100.00 | 43,062.47 | 130,116.45 | 173,178.92 | 116,475.34 |
| February | 36,431.59 | 6,216.24 | 42,647.83 | 107,072.27 | 149,720.10 | 101,953.85 |
| March | 41,012.40 | 7,820.41 | 48,832.81 | 107,990.37 | 156,823.18 | 101,320.05 |
| April | 38,746.16 | 10,249.25 | 48,995.41 | 139,284.61 | 188,280.02 | 127,408.20 |
| May | 39,095.31 | 8,993.26 | 48,088.57 | 150,477.64 | 198,566.22 | 139,450.51 |
| June | 39,200.34 | 6,306.60 | 45,506.94 | 113,690.24 | 159,197.18 | 109,262.71 |
| July | 39,384.53 | 8,090.28 | 47,474.81 | 148,739.56 | 196,214.37 | 139,872.68 |
| August | 38,462.11 | 5,499.60 | 43,961.71 | 143,929.50 | 187,891.21 | 136,793.13 |
| September | 37,836.31 | 2,636.96 | 40,473.27 | 159,936.01 | 200,409.28 | 151,824.83 |
| October | 37,499.26 | 6,640.72 | 44,139.98 | 157,402.05 | 201,542.03 | 150,703.03 |
| November | 36,720.00 | 6,173.34 | 42,893.33 | 121,600.12 | 164,493.45 | 114,445.85 |
| December | 36,841.48 | 4,315.60 | 41,157.08 | 138,182.69 | 179,339.77 | 128,234.64 |
| 2015 | | | | | | |
| January | 36,364.27 | 4,798.70 | 41,162.98 | 127,647.41 | 168,810.38 | 118,921.74 |
| February | 38,214.53 | 4,431.45 | 42,645.98 | 113,143.49 | 155,789.47 | 105,171.91 |
| March | 40,646.69 | 7,060.24 | 47,706.93 | 114,862.49 | 162,569.42 | 108,357.29 |
| April | 34,360.68 | 5,520.18 | 39,880.86 | 129,842.15 | 169,723.01 | 123,286.34 |

Table 13(a): Major Destinations of Domestic Exports

| | KSh Million | | | | | | | | | | |
|---------------|-------------|----------|----------------|----------|-------------|----------|----------|----------|----------|----------------------|--------|
| Month/Country | Uganda | Tanzania | United Kingdom | Pakistan | Netherlands | Egypt | Germany | Rwanda | USA | United Arab Emirates | France |
| 2014 | | | | | | | | | | | |
| January | 4,152.25 | 2,874.63 | 3,266.40 | 2,066.94 | 3,818.54 | 1,549.11 | 886.29 | 1,021.80 | 2,416.41 | 1,230.92 | 428.17 |
| February | 3,739.75 | 2,809.96 | 2,896.55 | 1,358.96 | 3,805.55 | 1,263.15 | 869.81 | 990.23 | 2,613.13 | 1,036.85 | 406.07 |
| March | 4,478.98 | 2,858.12 | 3,259.88 | 1,317.21 | 4,139.32 | 1,781.78 | 1,092.62 | 1,125.02 | 2,856.28 | 1,191.57 | 481.28 |
| April | 3,847.90 | 2,823.81 | 2,857.25 | 1,711.27 | 3,131.77 | 1,170.54 | 853.49 | 949.86 | 3,192.30 | 1,022.67 | 489.36 |
| May | 3,802.05 | 3,231.67 | 2,807.28 | 1,757.64 | 3,403.92 | 1,637.87 | 1,107.78 | 773.20 | 3,603.55 | 991.99 | 551.97 |
| June | 3,779.16 | 2,775.23 | 3,149.45 | 1,714.66 | 3,372.45 | 1,909.39 | 965.24 | 774.09 | 3,696.68 | 752.61 | 422.96 |
| July | 3,942.44 | 3,382.54 | 3,192.54 | 2,245.10 | 2,618.43 | 1,448.18 | 1,085.74 | 682.49 | 3,639.21 | 1,405.47 | 535.74 |
| August | 3,714.48 | 3,286.31 | 2,944.10 | 2,017.71 | 2,036.71 | 1,185.91 | 540.85 | 1,207.78 | 3,464.70 | 903.85 | 590.42 |
| September | 4,556.99 | 3,235.18 | 2,855.70 | 1,698.24 | 2,686.40 | 1,086.01 | 592.38 | 1,060.40 | 2,937.97 | 1,135.26 | 582.33 |
| October | 4,473.67 | 2,780.09 | 2,795.10 | 1,438.74 | 2,950.81 | 1,439.72 | 555.09 | 872.23 | 3,512.42 | 1,315.06 | 410.12 |
| November | 4,319.87 | 2,184.76 | 2,361.66 | 1,800.54 | 2,915.12 | 1,503.80 | 719.14 | 1,004.48 | 3,600.85 | 1,215.61 | 304.23 |
| December | 3,885.09 | 1,916.16 | 3,005.70 | 2,785.03 | 3,277.84 | 1,082.27 | 791.08 | 978.81 | 2,671.32 | 1,442.57 | 282.29 |
| 2015 | | | | | | | | | | | |
| January | 4,129.75 | 1,845.98 | 3,303.53 | 2,038.42 | 3,263.35 | 938.80 | 895.35 | 987.35 | 2,761.33 | 1,504.67 | 266.20 |
| February | 4,603.10 | 1,924.58 | 3,521.23 | 2,991.93 | 3,817.43 | 1,244.07 | 769.03 | 817.21 | 2,510.70 | 1,593.14 | 283.40 |
| March | 4,575.63 | 2,032.98 | 3,506.74 | 1,779.07 | 3,273.94 | 1,606.88 | 1,104.37 | 1,043.73 | 3,153.90 | 1,765.96 | 385.98 |
| April | 4,176.25 | 1,992.44 | 2,662.68 | 1,339.86 | 3,034.07 | 1,622.47 | 917.48 | 922.92 | 2,572.42 | 1,281.74 | 503.17 |

Source: Kenya Revenue Authority (KRA)

Table 13 (b): Domestic Exports by Broad Economic Category

| Descriptions | 2014 | | | | | | | | | | 2015 | | | |
|--|------------------|------------------|------------------|------------------|------------------|------------------|------------------|------------------|------------------|------------------|------------------|------------------|------------------|------------------|
| | Mar | April | May | June | July | Aug | Sep | October | Nov | Dec | Jan | Feb | March | April |
| Food and beverages | 15,634.86 | 16,002.42 | 15,692.66 | 15,874.88 | 17,196.70 | 16,122.75 | 15,269.42 | 15,227.98 | 15,100.21 | 15,098.49 | 14,852.94 | 16,125.62 | 17,460.82 | 14,805.73 |
| Industrial supplies (Non-Food) | 11,608.79 | 10,227.16 | 10,170.17 | 11,487.58 | 10,356.96 | 11,282.28 | 10,012.85 | 9,900.38 | 10,100.91 | 9,872.10 | 10,161.82 | 9,620.54 | 10,008.52 | 9,450.97 |
| Fuel and Lubricants | 23.33 | 617.65 | 237.69 | 263.29 | 261.25 | 304.67 | 99.04 | 21.16 | 56.60 | 479.77 | 157.08 | 48.74 | 70.30 | 31.81 |
| Machinery & other capital Equipment | 569.75 | 489.48 | 631.25 | 548.93 | 670.36 | 598.83 | 695.07 | 717.54 | 831.78 | 679.17 | 639.20 | 625.99 | 776.41 | 536.92 |
| Transport equipment | 609.33 | 732.62 | 802.74 | 613.43 | 635.52 | 725.56 | 532.62 | 614.76 | 423.94 | 450.67 | 392.77 | 487.26 | 393.12 | 502.39 |
| Consumer goods Not elsewhere specified | 12,428.67 | 10,582.92 | 11,554.56 | 10,411.33 | 10,261.08 | 9,423.10 | 10,987.30 | 10,766.28 | 10,052.64 | 10,029.70 | 9,955.31 | 11,093.75 | 11,646.85 | 8,855.53 |
| Goods not elsewhere specified | 137.67 | 93.91 | 6.24 | 0.92 | 2.65 | 4.93 | 240.01 | 251.16 | 153.92 | 231.58 | 205.15 | 212.63 | 290.66 | 177.33 |
| Total | 41,012.40 | 38,746.16 | 39,095.31 | 39,200.34 | 39,384.53 | 38,462.11 | 37,836.31 | 37,499.26 | 36,720.00 | 36,841.48 | 36,364.27 | 38,214.53 | 40,646.69 | 34,360.68 |
| Percentage Shares: | | | | | | | | | | | | | | |
| Food and Beverages | 38.12 | 41.30 | 40.14 | 40.50 | 43.66 | 41.92 | 40.36 | 40.61 | 41.12 | 40.98 | 40.84 | 42.20 | 42.96 | 43.09 |
| Industrial Supplies (Non-Food) | 28.31 | 26.40 | 26.01 | 29.30 | 26.30 | 29.33 | 26.46 | 26.40 | 27.51 | 26.80 | 27.94 | 25.18 | 24.62 | 27.51 |
| Fuel and Lubricants | 0.06 | 1.59 | 0.61 | 0.67 | 0.66 | 0.79 | 0.26 | 0.06 | 0.15 | 1.30 | 0.43 | 0.13 | 0.17 | 0.09 |
| Machinery and other Capital Equipment... | 1.39 | 1.26 | 1.61 | 1.40 | 1.70 | 1.56 | 1.84 | 1.91 | 2.27 | 1.84 | 1.76 | 1.64 | 1.91 | 1.56 |
| Transport Equipment | 1.49 | 1.89 | 2.05 | 1.56 | 1.61 | 1.89 | 1.41 | 1.64 | 1.15 | 1.22 | 1.08 | 1.28 | 0.97 | 1.46 |
| Consumer Goods not elsewhere specified | 30.30 | 27.31 | 29.55 | 26.56 | 26.05 | 24.50 | 29.04 | 28.71 | 27.38 | 27.22 | 27.38 | 29.03 | 28.65 | 25.77 |
| Goods not elsewhere specified | 0.34 | 0.24 | 0.02 | 0.00 | 0.01 | 0.01 | 0.63 | 0.67 | 0.42 | 0.63 | 0.56 | 0.56 | 0.72 | 0.52 |
| TOTAL | 100 | 100 | 100 | 100 | 100 | 100 | 100 | 100 | 100 | 100 | 100 | 100 | 100 | 100 |

Source: Kenya Revenue Authority (KRA)

Table 14(a): Major Origins of Imports

| Month | Value (KSh Million) | | | | | | | | | | |
|-------------|----------------------|----------------|--------------|--------------|----------|-----------|-----------|----------|-------------|----------|-----------|
| | United Arab Emirates | United Kingdom | South Africa | Saudi Arabia | Japan | India | USA | Germany | Netherlands | France | China |
| 2014 | | | | | | | | | | | |
| January | 8,299.99 | 6,035.12 | 6,124.96 | 4,253.05 | 9,350.34 | 16,962.45 | 5,258.10 | 3,985.09 | 1,328.88 | 2,032.99 | 15,059.01 |
| February | 7,351.15 | 3,427.92 | 5,354.54 | 5,525.38 | 4,266.24 | 19,390.19 | 4,301.35 | 3,326.57 | 1,311.61 | 1,325.37 | 14,177.95 |
| March | 8,429.55 | 3,291.02 | 6,634.62 | 3,982.16 | 7,646.90 | 16,431.98 | 3,842.78 | 2,825.74 | 1,687.12 | 1,587.72 | 18,475.89 |
| April | 10,817.69 | 4,243.87 | 6,950.55 | 2,730.16 | 6,380.86 | 31,810.51 | 13,062.48 | 7,095.51 | 1,146.85 | 1,536.71 | 15,964.53 |
| May | 10,898.91 | 3,435.13 | 3,324.64 | 2,683.39 | 6,929.83 | 26,413.74 | 21,223.57 | 4,238.94 | 1,359.53 | 1,647.54 | 21,162.14 |
| June | 5,733.46 | 3,262.84 | 4,466.75 | 2,040.40 | 6,794.50 | 18,895.60 | 3,863.08 | 3,434.64 | 1,546.69 | 1,313.95 | 15,149.33 |
| July | 10,344.54 | 4,153.63 | 4,527.48 | 7,002.95 | 7,402.95 | 25,362.94 | 30,588.39 | 3,322.42 | 987.40 | 1,475.12 | 17,736.92 |
| August | 11,267.18 | 3,229.60 | 4,361.83 | 2,145.74 | 7,563.74 | 19,125.85 | 23,924.68 | 3,873.40 | 2,159.48 | 2,103.88 | 22,334.45 |
| September | 6,990.65 | 2,983.30 | 4,958.11 | 8,431.68 | 7,605.93 | 21,930.34 | 14,344.93 | 4,320.24 | 2,673.99 | 4,286.45 | 38,658.86 |
| October | 12,971.82 | 4,040.58 | 7,301.88 | 2,451.14 | 7,049.80 | 22,548.39 | 29,506.90 | 3,433.31 | 1,301.55 | 2,230.79 | 24,620.18 |
| November | 6,517.10 | 3,268.18 | 5,244.62 | 9,664.99 | 5,612.85 | 18,199.24 | 12,661.74 | 2,812.97 | 2,412.37 | 1,309.51 | 18,989.81 |
| December | 3,632.62 | 5,666.08 | 4,643.53 | 5,653.58 | 9,949.67 | 27,461.15 | 6,142.31 | 4,739.75 | 876.40 | 1,599.43 | 26,313.57 |
| 2015 | | | | | | | | | | | |
| January | 4,241.70 | 3,262.91 | 4,864.22 | 8,660.30 | 6,064.29 | 25,324.59 | 9,458.10 | 3,332.60 | 1,631.96 | 1,358.02 | 23,584.96 |
| February | 3,502.17 | 2,650.96 | 3,480.56 | 3,745.31 | 5,538.28 | 20,200.69 | 4,723.50 | 3,844.20 | 2,012.33 | 1,197.07 | 24,306.18 |
| March | 4,521.20 | 3,449.93 | 6,001.53 | 5,252.61 | 6,856.42 | 20,037.67 | 4,094.78 | 3,428.34 | 512.05 | 1,581.76 | 24,463.78 |
| April | 10,849.03 | 3,904.07 | 4,820.13 | 5,253.10 | 8,333.61 | 15,105.19 | 12,854.52 | 3,716.57 | 1,683.82 | 1,528.37 | 21,299.47 |

Source: Kenya Revenue Authority

Table 14 (b): Imports by Broad Economic Category

| | 2014 | | | | | | | | | | Value (KSh Million) 2015 | | | |
|--|----------------|----------------|----------------|----------------|----------------|----------------|----------------|----------------|----------------|-------------------|-----------------------------|-------------------|----------------|----------------|
| | Mar | April | May | June | July | Aug | Sept | Oct | Nov | Dec | Jan | Feb | March | April |
| Food and beverages | 6,950.06 | 8,186.77 | 8,903.07 | 10,720.58 | 8,005.31 | 9,243.32 | 11,060.57 | 10,357.85 | 8,748.89 | 11,747.62 | 10,509.30 | 12,454.46 | 9,525 | 9,666 |
| industrial supplies (non-food) | 32,715.36 | 40,226.87 | 37,762.04 | 34,975.80 | 39,082.65 | 40,818.58 | 38,436.95 | 41,678.09 | 36,356.26 | 44,201.55 | 44,134.69 | 39,524.03 | 41,434 | 40,384 |
| Fuel and lubricants | 26,860.82 | 33,428.37 | 38,001.90 | 27,476.53 | 29,066.77 | 28,853.47 | 34,174.56 | 26,260.60 | 24,217.79 | 25,159.80 | 19,216.98 | 17,262.13 | 15,547 | 19,198 |
| machinery & other capital equipment | 21,079.71 | 24,705.21 | 22,491.95 | 17,534.25 | 22,186.55 | 23,205.01 | 36,103.44 | 26,687.72 | 20,445.86 | 22,052.56 | 22,453.79 | 20,373.46 | 22,175 | 24,122 |
| transport equipment | 10,613.27 | 21,556.71 | 29,497.10 | 12,098.58 | 37,734.74 | 31,603.38 | 29,340.36 | 41,200.69 | 21,795.35 | 20,218.03 | 17,002.31 | 13,127.47 | 14,401 | 22,623 |
| consumer goods not elsewhere specified | 7,390.78 | 9,206.18 | 9,381.80 | 9,449.12 | 10,850.52 | 10,196.26 | 8,948.92 | 9,244.94 | 7,940.04 | 12,187.28 | 11,005.34 | 8,424.24 | 9,588 | 11,177 |
| Goods not elsewhere specified | 2,380.36 | 1,974.51 | 4,439.78 | 1,435.40 | 1,813.02 | 9.48 | 1,871.20 | 1,972.15 | 2,095.93 | 2,615.84 | 3,325.00 | 1,977.70 | 2,192 | 2,674 |
| Total | 107,990 | 139,285 | 150,478 | 113,690 | 148,740 | 143,929 | 159,936 | 157,402 | 121,600 | 138,182.69 | 127,647.41 | 113,143.49 | 114,862 | 129,842 |
| Percentage shares: | | | | | | | | | | | | | | |
| Food and beverages | 6.44 | 5.88 | 5.92 | 9.43 | 5.38 | 6.42 | 6.92 | 6.58 | 7.19 | 8.50 | 8.23 | 11.01 | 8.29 | 7.44 |
| Industrial supplies (non-food) | 30.29 | 28.88 | 25.09 | 30.76 | 26.28 | 28.36 | 24.03 | 26.48 | 29.9 | 31.99 | 34.58 | 34.93 | 36.07 | 31.10 |
| Fuel and lubricants | 24.87 | 24.00 | 25.25 | 24.17 | 19.54 | 20.05 | 21.37 | 16.68 | 19.92 | 18.21 | 15.05 | 15.26 | 13.54 | 14.79 |
| Machinery and other capital equipment... | 19.52 | 17.74 | 14.95 | 15.42 | 14.92 | 16.12 | 22.57 | 16.96 | 16.81 | 15.96 | 17.59 | 18.01 | 19.31 | 18.58 |
| Transport equipment | 9.83 | 15.48 | 19.60 | 10.64 | 25.37 | 21.96 | 18.35 | 26.18 | 17.92 | 14.63 | 13.32 | 11.60 | 12.54 | 17.42 |
| Consumer goods not elsewhere specified | 6.84 | 6.61 | 6.23 | 8.31 | 7.29 | 7.08 | 5.60 | 5.87 | 6.53 | 8.82 | 8.62 | 7.45 | 8.35 | 8.61 |
| Goods not elsewhere specified | 2.20 | 1.42 | 2.95 | 1.26 | 1.22 | 0.01 | 1.17 | 1.25 | 1.72 | 1.89 | 2.60 | 1.75 | 1.91 | 2.06 |
| TOTAL | 100 | 100 | 100 | 100 | 100 | 100 | 100 | 100 | 100 | 100 | 100 | 100 | 100 | 100 |

Table 15(a): Local Electricity Generation by Source

| KWh Million | | | | |
|-------------|--------|---------------|---------|---------------|
| Month | Hydro | Geo - Thermal | Thermal | Total |
| 2013 | | | | |
| January | 377.24 | 129.45 | 168.67 | 675.36 |
| February | 332.99 | 113.11 | 160.26 | 606.36 |
| March | 347.60 | 134.93 | 162.56 | 645.08 |
| April | 345.05 | 151.90 | 139.85 | 636.80 |
| May | 376.96 | 158.56 | 132.96 | 668.48 |
| June | 378.41 | 162.04 | 130.79 | 671.24 |
| July | 385.86 | 157.34 | 157.34 | 700.96 |
| August | 376.91 | 157.52 | 181.74 | 716.17 |
| September | 263.41 | 152.74 | 177.94 | 707.63 |
| October | 384.52 | 151.05 | 214.97 | 750.54 |
| November | 357.67 | 151 | 224.4 | 733.07 |
| December | 346.51 | 160.87 | 197.82 | 705.2 |
| 2014 | | | | |
| January | 339.2 | 178.92 | 228.8 | 746.92 |
| February | 269.93 | 145.48 | 258.38 | 673.79 |
| March | 286.74 | 170.77 | 280.34 | 737.85 |
| April | 307.53 | 169.88 | 239.78 | 717.19 |
| May | 250.18 | 190.75 | 295.89 | 736.82 |
| June | 263.41 | 220.91 | 245.8 | 730.12 |
| July | 253.87 | 257.71 | 251.5 | 763.08 |
| August | 293.87 | 246.67 | 224.2 | 764.74 |
| September | 277.62 | 293.26 | 163.91 | 734.79 |
| October | 279.02 | 339.40 | 156.66 | 775.08 |
| November | 307.25 | 322.17 | 121.53 | 750.95 |
| December | 282.25 | 381.56 | 93.78 | 757.59 |
| 2015 | | | | |
| January | 278.24 | 388.40 | 109.19 | 775.83 |
| February | 229.50 | 352.12 | 121.11 | 702.73 |
| March | 246.01 | 376.67 | 134.19 | 756.87 |
| April | 264.24 | 359.47 | 120.77 | 744.48 |

Source: Kenya Power & Lighting Company Limited

Fig.8: Electricity Generation by Source

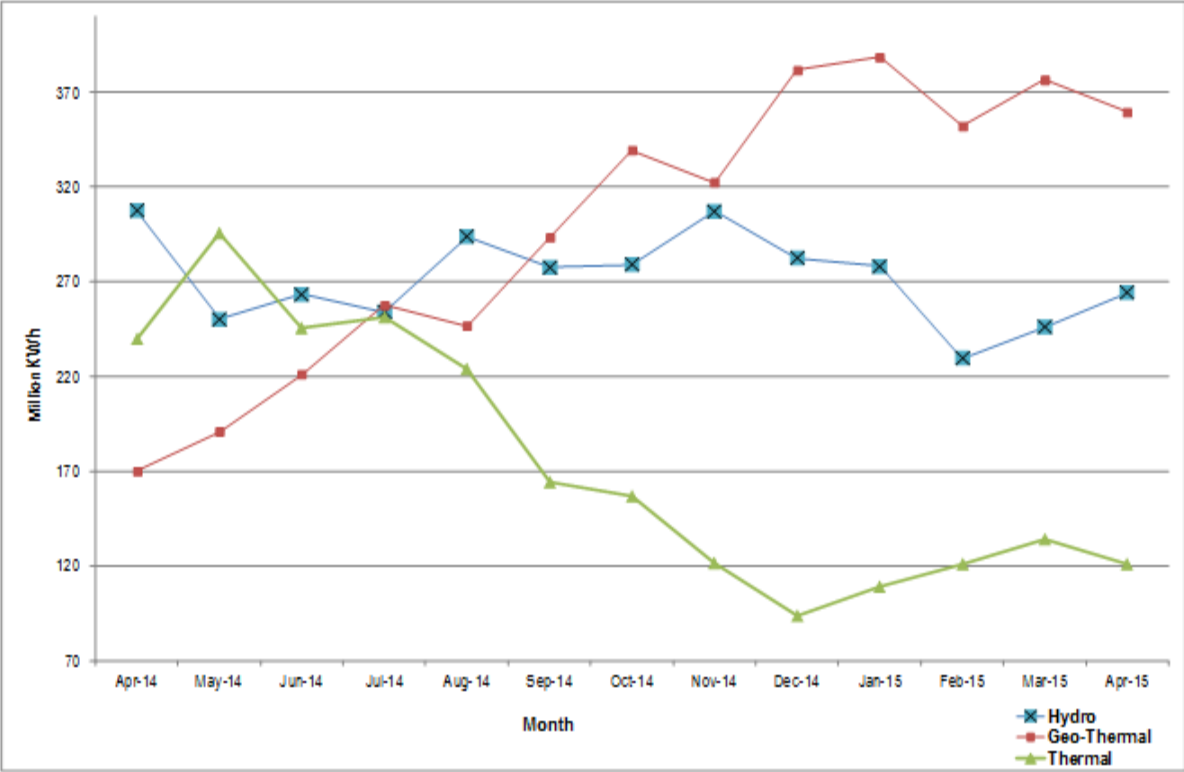


Table 15(b): Generation and Consumption of electricity

| | | | | | | | | | | | | | | Million KWh |
|--------------|---------------------|---------|----------|----------|-------|-------------------|---------------------|---------------------|--------------------------|---------|----------|---------------|----------------------|-----------------|
| Month | Generation | | | | | | | Consumption | | | | | | |
| | Local Generation | Imports | | | | EPPS (Aggreko) | Total Generation | Total KPLC Sales | Rural Electrification | Exports | | | Total Consumption | Power Losses |
| | | Uganda | Tanzania | Ethiopia | Total | | | | | Uganda | Tanzania | Total Exports | | |
| 2013 | | | | | | | | | | | | | | |
| January | 675.36 | 3.47 | 0.10 | | 3.57 | 22.77 | 701.70 | 499.80 | 34.22 | 2.45 | 0.00 | 2.45 | 534.02 | 170.14 |
| February | 606.36 | 3.13 | 0.10 | | 3.23 | 30.70 | 640.29 | 511.40 | 32.69 | 2.95 | 0.00 | 2.95 | 544.09 | 99.16 |
| March | 645.08 | 3.76 | 0.10 | | 3.86 | 23.78 | 672.72 | 462.5 | 33.00 | 3.68 | 0.00 | 3.68 | 495.50 | 177.04 |
| April | 636.80 | 3.75 | 0.10 | | 3.85 | 14.74 | 655.39 | 484.20 | 32.30 | 2.84 | 0.00 | 2.84 | 516.50 | 138.89 |
| May | 668.48 | 4.26 | 0.10 | | 4.36 | 21.63 | 698.83 | 512.55 | 33.13 | 3.87 | 0.12 | 3.99 | 545.68 | 149.16 |
| June | 671.24 | 3.70 | 0.10 | | 3.80 | 14.78 | 689.82 | 575.53 | 30.88 | 3.66 | 0.13 | 3.79 | 606.41 | 79.62 |
| July | 700.96 | 3.86 | 0.10 | | 3.96 | 21.94 | 726.85 | 470.18 | 30.95 | 3.36 | 0.09 | 3.45 | 501.13 | 222.27 |
| August | 716.17 | 4.62 | 0.11 | | 4.73 | 12.14 | 733.04 | 518.69 | 36.93 | 0.11 | - | 0.11 | 555.62 | 177.31 |
| September | 707.63 | 4.17 | 0.11 | | 4.28 | 2.48 | 714.39 | 531.82 | 36.82 | 4.00 | 0.13 | 4.13 | 568.64 | 141.62 |
| October | 750.54 | 4.36 | 0.12 | | 4.48 | 3.37 | 758.39 | 523.48 | 47.01 | 4.52 | 0.15 | 4.67 | 570.49 | 183.23 |
| November | 733.07 | 4.20 | 0.10 | | 4.30 | 2.85 | 740.22 | 547.98 | 35.80 | 4.22 | 0.13 | 4.37 | 583.78 | 152.07 |
| December | 705.20 | 4.47 | 0.11 | | 4.58 | 6.01 | 715.79 | 495.76 | 34.00 | - | - | - | 529.76 | 186.03 |
| 2014* | | | | | | | | | | | | | | |
| January | 746.92 | 3.76 | 0.11 | | 3.87 | 8.65 | 759.44 | 528.30 | 39.52 | 3.76 | 0.15 | 3.91 | 567.82 | 191.62 |
| February | 673.79 | 3.17 | 0.10 | | 3.27 | 9.83 | 686.89 | 546.80 | 37.12 | 2.70 | 0.12 | 2.82 | 583.92 | 100.15 |
| March | 737.85 | 9.40 | 0.10 | | 9.50 | 8.53 | 755.88 | 509.40 | 35.40 | 1.72 | 0.14 | 1.86 | 544.80 | 209.22 |
| April | 717.19 | 12.07 | 0.10 | | 12.17 | 6.61 | 735.97 | 549.60 | 37.60 | 1.65 | - | 1.65 | 587.20 | 147.12 |
| May | 736.82 | 19.85 | 0.11 | | 19.96 | 11.46 | 768.24 | 537.00 | 39.14 | 0.00 | 0.14 | 0.14 | 576.14 | 191.96 |
| June | 730.12 | 9.10 | 0.11 | | 9.21 | 5.64 | 744.97 | 613.30 | 35.00 | 0.00 | - | 0.00 | 648.30 | 96.67 |
| July | 763.08 | 8.82 | 0.11 | | 8.93 | 3.92 | 775.93 | 509.79 | 39.54 | 2.10 | 0.15 | 2.25 | 549.33 | 226.60 |
| August | 764.74 | 8.35 | 0.12 | 2.59 | 11.06 | 3.14 | 778.94 | 631.76 | 40.80 | 2.72 | 0.15 | 2.87 | 672.56 | 106.38 |
| September | 734.79 | 12.27 | 0.12 | 0.23 | 12.62 | 3.64 | 751.05 | 631.70 | 40.38 | 1.54 | 0.15 | 1.69 | 672.08 | 78.97 |
| October | 775.08 | 8.94 | 0.12 | 0.22 | 9.28 | 4.75 | 789.11 | 641.20 | 42.90 | 2.50 | 0.16 | 2.66 | 684.10 | 105.01 |
| November | 750.95 | 5.99 | 0.11 | 0.21 | 6.31 | 4.62 | 761.88 | 621.78 | 44.90 | 3.09 | 0.15 | 3.24 | 666.68 | 95.20 |
| December | 757.59 | 5.14 | 0.00 | 0.23 | 5.37 | 3.15 | 766.11 | 611.12 | 41.73 | 3.70 | 0.16 | 3.86 | 652.85 | 113.26 |
| 2015 | | | | | | | | | | | | | | |
| January | 775.83 | 4.85 | 0.00 | 0.26 | 5.11 | 7.29 | 788.23 | 601.25 | 41.29 | 4.02 | 0.17 | 4.19 | 642.54 | 145.69 |
| February | 702.73 | 4.12 | 0.00 | 0.24 | 4.36 | 10.31 | 717.40 | 611.57 | 42.90 | 2.50 | 0.16 | 2.66 | 654.47 | 62.93 |
| March | 756.87 | 4.34 | 0.00 | 0.26 | 4.60 | 11.64 | 772.11 | 600.39 | 45.21 | 3.62 | 0.19 | 3.81 | 645.60 | 126.51 |
| April | 744.48 | 3.82 | 0.00 | 0.22 | 4.04 | 3.43 | 751.95 | 662.15 | 42.07 | 3.69 | 0.18 | 3.87 | 704.22 | 47.73 |

Source: Kenya Power & Lighting Company Limited

*Provisional

- Data not available

NB: Power losses refers to difference between total generation and consumption

Fig. 9: Electricity Generation, Consumption and Power Losses



Table 15 (c): Consumption of Petroleum Fuels

| | | | | | | | | | '000 MT |
|-------------|------------------|----------|-----------|--------------|-----------------------|------------------|--------|-------------------|---------------|
| Period | Light Diesel Oil | Jet Fuel | Fuel Oils | Motor Spirit | Illuminating Kerosene | Heavy Diesel Oil | L.P.G. | Aviation Gasoline | Total Fuels |
| 2013 | | | | | | | | | |
| January | 139.34 | 54.99 | 32.78 | 64.82 | 29.39 | 1.60 | 5.87 | 0.11 | 328.91 |
| February | 133.00 | 46.28 | 28.94 | 56.42 | 25.75 | 2.11 | 5.25 | 0.16 | 297.91 |
| March | 127.53 | 47.37 | 27.86 | 57.77 | 23.45 | 1.53 | 4.68 | 0.15 | 290.34 |
| April | 125.35 | 43.92 | 30.01 | 56.27 | 22.58 | 1.72 | 4.51 | 0.12 | 284.49 |
| May | 132.37 | 47.33 | 28.18 | 61.59 | 22.27 | 1.49 | 5.38 | 0.14 | 298.76 |
| June | 141.57 | 42.47 | 19.15 | 58.78 | 20.52 | 1.49 | 5.16 | 0.12 | 289.28 |
| July | 147.48 | 42.83 | 21.93 | 69.03 | 25.79 | 1.92 | 5.45 | 0.15 | 314.58 |
| August | 151.21 | 41.77 | 26.17 | 72.72 | 28.35 | 1.95 | 4.99 | 0.13 | 327.30 |
| September | 141.72 | 43.32 | 22.81 | 70.83 | 25.99 | 2.01 | 4.18 | 0.12 | 310.98 |
| October | 141.96 | 45.86 | 20.09 | 71.57 | 25.82 | 1.31 | 5.07 | 0.14 | 311.82 |
| November | 135.83 | 44.82 | 27.05 | 68.31 | 24.36 | 0.66 | 4.46 | 0.13 | 305.63 |
| December | 128.11 | 35.08 | 23.69 | 75.66 | 22.01 | 0.28 | 4.62 | 0.13 | 289.58 |
| 2014 | | | | | | | | | |
| January | 132.99 | 44.59 | 27.14 | 73.85 | 30.81 | 0.62 | 4.71 | 0.16 | 314.95 |
| February | 127.52 | 40.60 | 26.78 | 64.49 | 26.09 | 0.59 | 3.61 | 0.18 | 289.85 |
| March | 139.98 | 90.92 | 29.59 | 69.78 | 25.99 | 0.38 | 4.01 | 0.00 | 360.63 |
| April | 151.97 | 44.62 | 27.96 | 80.00 | 32.44 | 0.62 | 5.53 | 0.16 | 343.30 |
| May | 142.08 | 40.60 | 27.20 | 70.42 | 27.66 | 0.59 | 4.36 | 0.18 | 313.09 |
| June | 151.03 | 45.85 | 29.66 | 74.90 | 27.65 | 0.38 | 4.91 | 0.14 | 334.52 |
| July | 151.20 | 55.23 | 23.06 | 71.98 | 26.47 | 1.97 | 5.24 | 0.13 | 335.28 |
| August | 155.62 | 54.87 | 24.03 | 76.06 | 27.73 | 1.82 | 5.40 | 0.10 | 345.63 |
| September | 142.50 | 51.06 | 27.51 | 71.60 | 21.96 | 0.96 | 4.46 | 0.14 | 320.19 |
| October | 146.31 | 44.86 | 22.61 | 75.88 | 18.38 | 0.00 | 8.10 | 0.13 | 316.27 |
| November | 139.91 | 41.40 | 20.12 | 72.62 | 16.25 | 0.03 | 7.09 | 0.23 | 297.65 |
| December | 139.93 | 27.90 | 24.17 | 78.55 | 23.93 | 0.03 | 7.50 | 0.10 | 302.11 |
| 2015 | | | | | | | | | |
| January | 147.12 | 52.14 | 31.08 | 71.46 | 27.87 | 0.72 | 5.57 | 0.10 | 336.07 |
| February | 150.57 | 46.13 | 28.85 | 66.24 | 25.67 | 1.30 | 5.23 | 0.16 | 324.15 |
| March | 154.05 | 50.91 | 29.94 | 72.08 | 25.20 | 0.84 | 5.03 | 0.16 | 338.21 |

Source: Ministry of Energy and Petroleum

MT: Denotes Metric Tonnes

Table 15 (d): Average Retail Prices for Selected Fuel Products within Nairobi

| KSh per litre | | | |
|---------------|------------------------|---------------------------|-----------------------|
| Period | Motor Gasoline Premium | Light Diesel Oil (Gasoil) | Illuminating Kerosene |
| 2013 | | | |
| January | 111.60 | 103.99 | 83.86 |
| February | 117.69 | 107.37 | 88.54 |
| March | 113.57 | 106.2 | 88.54 |
| April | 113.24 | 101.06 | 79.46 |
| May | 111.64 | 102.36 | 81.63 |
| June | 109.52 | 102.86 | 79.49 |
| July | 112.26 | 104.44 | 83.93 |
| August | 113.88 | 105.55 | 85.56 |
| September | 112.27 | 104.47 | 85.01 |
| October | 108.87 | 103.25 | 82.79 |
| November | 109.28 | 104.52 | 83.07 |
| December | 110.59 | 104.73 | 85.07 |
| 2014 | | | |
| January | 111.64 | 102.36 | 81.63 |
| February | 111.55 | 105.80 | 83.07 |
| March | 113.61 | 104.87 | 83.91 |
| April | 114.16 | 103.82 | 83.16 |
| May | 114.73 | 104.71 | 82.81 |
| June | 114.62 | 104.81 | 83.13 |
| July | 115.86 | 104.67 | 84.12 |
| August | 116.62 | 102.98 | 83.05 |
| September | 111.64 | 102.36 | 81.63 |
| October | 110.89 | 100.67 | 80.88 |
| November | 106.80 | 94.52 | 76.31 |
| December | 102.01 | 90.85 | 71.37 |
| 2015 | | | |
| January | 92.88 | 83.35 | 65.59 |
| February | 84.71 | 75.52 | 52.40 |
| March | 89.46 | 76.20 | 55.75 |
| April | 89.35 | 77.48 | 57.21 |
| May | 92.89 | 79.34 | 59.24 |

Source: Energy Regulatory Commission

Table 15 (e): Average Retail Prices for Selected Fuels in Kenya

| Period | Motor Gasoline Premium (KShper Litre) | Light Diesel Oil (KSh per Litre) | Illuminating Kerosene (KSh per Litre) | L.P.G (KSh per 13Kg) | Charcoal (KSh per 4 Kg Tin) |
|-------------|--|-------------------------------------|--|-------------------------|--------------------------------|
| 2013 | | | | | |
| January | 112.35 | 104.83 | 84.71 | 2,630.73 | 66.44 |
| February | 114.32 | 107.04 | 86.78 | 2,643.04 | 66.91 |
| March | 118.41 | 108.21 | 89.39 | 2,662.61 | 67.29 |
| April | 118.38 | 107.29 | 84.68 | 2,626.37 | 69.86 |
| May | 113.99 | 101.91 | 80.32 | 2,592.85 | 70.55 |
| June | 108.93 | 100.01 | 82.38 | 2,573.75 | 70.44 |
| July | 109.93 | 102.21 | 80.36 | 2,564.79 | 71.15 |
| August | 113.01 | 105.29 | 84.79 | 2,575.93 | 71.68 |
| September | 114.69 | 106.47 | 86.47 | 2,836.67 | 70.97 |
| October | 113.09 | 105.39 | 85.92 | 2,835.20 | 70.54 |
| November | 109.17 | 104.17 | 83.71 | 2,846.06 | 70.54 |
| December | 110.11 | 105.44 | 83.99 | 2,876.00 | 72.80 |
| 2014 | | | | | |
| January | 111.41 | 105.65 | 85.98 | 2,995.22 | 73.47 |
| February | 112.37 | 106.72 | 83.99 | 3,027.03 | 73.77 |
| March | 114.43 | 105.79 | 84.82 | 3,094.16 | 72.86 |
| April | 114.98 | 104.74 | 84.08 | 3,098.25 | 72.99 |
| May | 115.55 | 105.63 | 83.73 | 3,075.06 | 73.27 |
| June | 115.43 | 105.73 | 84.04 | 3,074.57 | 73.34 |
| July | 116.67 | 105.59 | 85.03 | 3,042.80 | 73.11 |
| August | 117.43 | 103.90 | 83.97 | 3,109.67 | 73.52 |
| September | 112.46 | 103.28 | 82.55 | 3,111.74 | 73.39 |
| October | 111.72 | 101.59 | 81.81 | 3,068.58 | 73.47 |
| November | 107.64 | 95.45 | 77.24 | 3,033.28 | 73.65 |
| December | 102.86 | 91.79 | 72.30 | 3,018.45 | 73.59 |
| 2015 | | | | | |
| January | 93.75 | 84.30 | 66.53 | 2,954.36 | 73.25 |
| February | 85.60 | 76.49 | 53.37 | 2,846.53 | 73.06 |
| March | 90.34 | 77.16 | 56.71 | 2,629.56 | 73.39 |
| April | 90.22 | 78.44 | 58.17 | 2,529.56 | 74.66 |
| May | 93.76 | 80.30 | 60.20 | 2,424.69 | 75.54 |

Fig. 10: Average Prices for Liquefied Petroleum Gas in Kenya

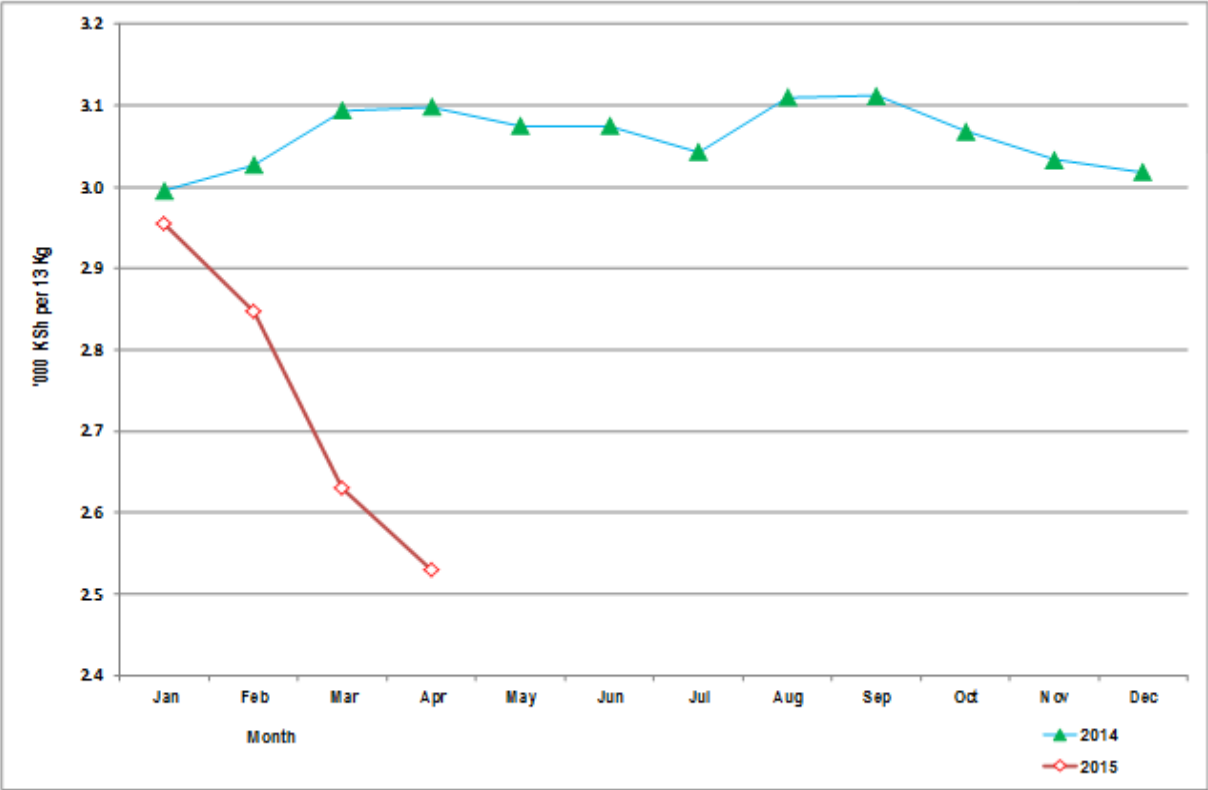


Table 15(f): Murban ADNOC Crude Oil Prices

| | US\$/ BBL | | | | | |
|------------|-----------|--------|--------|--------|--------|-------|
| Month/Year | 2010 | 2011 | 2012 | 2013 | 2014 | 2015 |
| January | 77.50 | 95.55 | 114.20 | 112.05 | 109.75 | 46.40 |
| February | 74.20 | 103.60 | 120.45 | 115.40 | 109.95 | 56.55 |
| March | 78.30 | 112.55 | 127.00 | 109.95 | 108.30 | 56.10 |
| April | 84.80 | 120.70 | 121.20 | 105.65 | 107.95 | 60.55 |
| May | 77.85 | 113.60 | 110.60 | 103.65 | 109.15 | |
| June | 74.80 | 112.15 | 97.35 | 103.00 | 111.65 | |
| July | 73.00 | 113.95 | 101.75 | 106.85 | 109.50 | |
| August | 74.60 | 109.05 | 111.65 | 111.70 | 104.25 | |
| September | 75.90 | 110.90 | 115.40 | 114.50 | 97.95 | |
| October | 81.50 | 108.95 | 113.20 | 112.45 | 87.35 | |
| November | 85.65 | 114.35 | 112.10 | 112.20 | 77.00 | |
| December | 91.85 | 111.80 | 110.75 | 113.85 | 60.65 | |

US\$/ BBL: US Dollar per Barrel
 Price: Abu Dhabi Free On Board (FOB)
 ADNOC: Abu Dhabi National Oil Corporation

Fig 11: Trends for Different world Crude Oil Prices

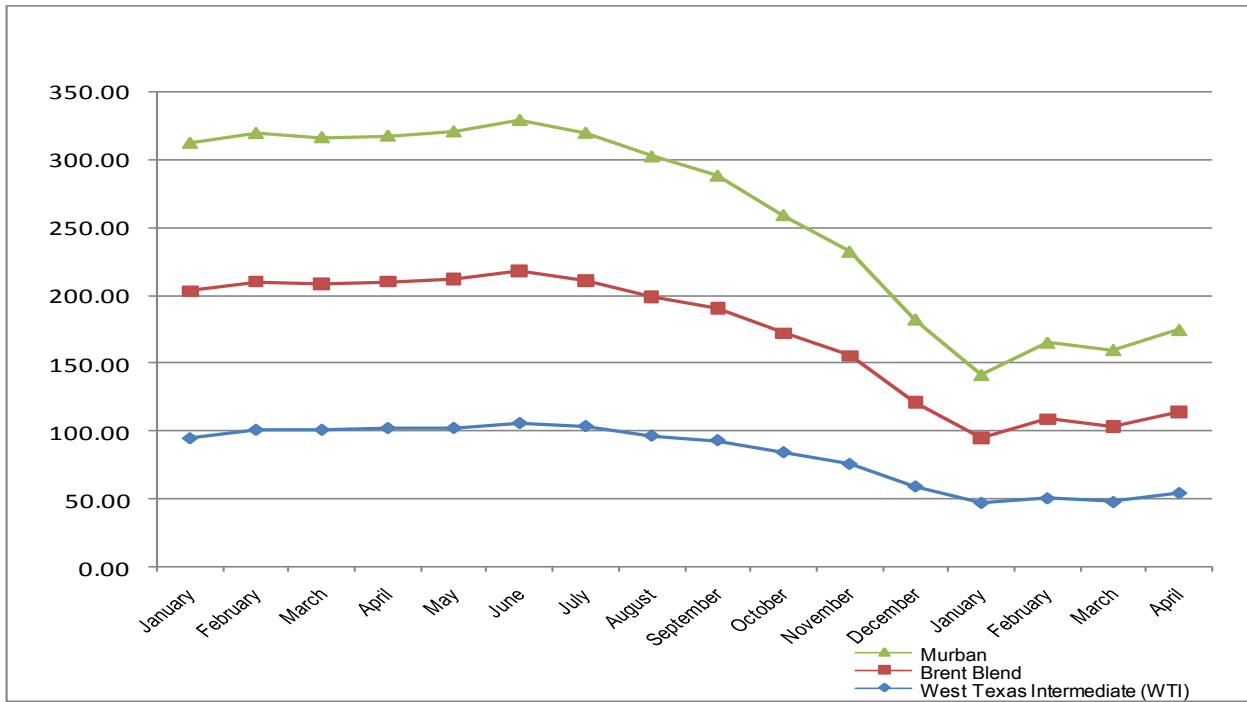


Table 16: Value of Building Plans Approved by Nairobi City County Planning Compliance & Enforcement Department

| Month | KSh Million | | | Index* | | |
|-------------|-------------|-----------------|-----------|-------------|-----------------|-----------|
| | Residential | Non Residential | Aggregate | Residential | Non Residential | Aggregate |
| 2013 | | | | | | |
| January | 5,899.4 | 11,970.5 | 17,869.9 | 90.2 | 173.3 | 266.2 |
| February | 7,315.4 | 7,374.9 | 14,690.2 | 111.9 | 106.7 | 218.9 |
| March | 8,930.9 | 6,882.8 | 15,813.7 | 136.6 | 99.6 | 235.6 |
| April | 8,622.5 | 4,765.3 | 13,387.8 | 131.8 | 69.0 | 199.5 |
| May | 9,250.3 | 6,765.3 | 16,015.6 | 141.4 | 97.9 | 238.6 |
| June | 10,935.3 | 8,254.5 | 19,189.8 | 167.2 | 119.4 | 285.9 |
| July | 11,135.0 | 8,156.8 | 19,291.8 | 170.3 | 118.1 | 287.4 |
| August | 11,210.8 | 8,568.8 | 19,779.6 | 171.4 | 124.0 | 294.7 |
| September | 12,543.2 | 8,418.5 | 20,961.6 | 191.8 | 121.8 | 312.3 |
| October | 14,031.3 | 11,897.0 | 25,928.3 | 214.6 | 172.2 | 386.3 |
| November | 17,914.0 | 12,151.2 | 30,065.2 | 273.9 | 175.9 | 447.9 |
| December | 11,845.9 | 11,923.3 | 23,769.1 | 181.1 | 172.6 | 354.1 |
| 2014 | | | | | | |
| January | 6,637.0 | 5,623.1 | 12,260.1 | 94.6 | 76.2 | 170.6 |
| February | 7,754.0 | 6,003.1 | 13,757.1 | 110.5 | 81.4 | 191.5 |
| March | 8,354.8 | 7,069.3 | 15,424.1 | 119.1 | 95.8 | 214.7 |
| April | 10,554.8 | 7,282.8 | 17,837.6 | 150.4 | 98.7 | 248.3 |
| May | 11,424.5 | 6,889.2 | 18,313.7 | 162.8 | 93.4 | 254.9 |
| June | 11,762.8 | 7,479.2 | 19,242.0 | 167.6 | 101.4 | 267.8 |
| July | 12,112.4 | 7,249.0 | 19,361.3 | 172.62 | 98.3 | 269.5 |
| August | 12,817.3 | 7,800.1 | 20,617.4 | 182.7 | 105.7 | 287.0 |
| September | 9,665.2 | 12,339.4 | 22,004.5 | 137.7 | 167.3 | 306.3 |
| October | 12,296.5 | 11,416.02 | 23,712.5 | 175.3 | 154.7 | 330.0 |
| November | 14,067.1 | 8,242.8 | 22,309.8 | 200.5 | 111.7 | 310.5 |
| December | 14,681.2 | 8,496.2 | 23,177.4 | 209.2 | 115.2 | 322.6 |
| 2015 | | | | | | |
| January | 8,829.2 | 3,883.7 | 12,712.9 | 113.1 | 48.1 | 160.3 |
| February | 10,154.0 | 6,003.1 | 16,157.1 | 130.1 | 74.4 | 203.7 |
| March | 10,758.0 | 5,706.5 | 16,464.5 | 137.8 | 70.7 | 207.6 |

Source: Nairobi City County.

* Actual deflated by relevant construction cost indices (Dec1972 =100)

Table 17(a): Domestic Production of Sugar

| | Metric Tonnes | | | | | |
|--------------|----------------|----------------|----------------|----------------|----------------|----------------|
| Month/Year | 2009 | 2010 | 2011 | 2012 | 2013 | 2014* |
| January | 53,968 | 48,100 | 55,974 | 53,852 | 49,046 | 64,298 |
| February | 46,115 | 42,982 | 52,069 | 49,480 | 50,036 | 60,044 |
| March | 53,687 | 45,388 | 53,842 | 52,342 | 43,647 | 63,365 |
| April | 46,164 | 43,801 | 52,061 | 44,914 | 39,151 | 47,279 |
| May | 46,002 | 34,465 | 49,130 | 40,410 | 36,529 | 44,094 |
| June | 47,410 | 37,828 | 38,818 | 45,111 | 49,512 | 42,866 |
| July | 33,078 | 33,495 | 25,884 | 41,607 | 61,802 | 55,912 |
| August | 36,827 | 41,911 | 26,060 | 37,058 | 58,687 | 50,140 |
| September | 42,586 | 45,595 | 22,815 | 32,503 | 50,303 | 47,915 |
| October | 43,750 | 43,669 | 28,990 | 30,123 | 52,751 | 42,197 |
| November | 50,115 | 50,822 | 32,689 | 31,886 | 54,752 | 34,455 |
| December | 48,297 | 55,414 | 36,729 | 34,651 | 53,994 | 64,298 |
| Total | 547,999 | 523,470 | 475,061 | 493,937 | 600,210 | 592,668 |

Source: Sugar Directorate

*Provisional

Table 17(b): Production of Soft Drinks

| | '000 Litres | | | | | |
|--------------|----------------|----------------|----------------|----------------|----------------|----------------|
| Month | 2009 | 2010 | 2011 | 2012 | 2013 | 2014* |
| January | 31,153 | 29,405 | 34,446 | 34,317 | 32,809 | 39,007 |
| February | 26,891 | 31,178 | 32,457 | 32,009 | 36,068 | 39,146 |
| March | 34,847 | 33,984 | 36,156 | 37,363 | 42,552 | 40,320 |
| April | 32,585 | 29,352 | 31,162 | 29,331 | 27,345 | 37,885 |
| May | 26,934 | 29,445 | 26,622 | 24,359 | 27,581 | 40,430 |
| June | 28,314 | 29,588 | 28,910 | 27,391 | 30,919 | 28,706 |
| July | 25,279 | 29,332 | 28,478 | 22,073 | 28,464 | 33,790 |
| August | 26,829 | 28,525 | 28,580 | 24,458 | 27,697 | 33,404 |
| September | 31,594 | 29,593 | 29,674 | 31,113 | 36,026 | 35,899 |
| October | 29,922 | 30,435 | 28,540 | 32,540 | 34,810 | 41,601 |
| November | 29,664 | 29,333 | 27,366 | 31,497 | 36,272 | 40,134 |
| December | 37,261 | 31,163 | 38,962 | 33,067 | 43,438 | 49,142 |
| Total | 361,273 | 361,333 | 371,352 | 359,518 | 403,981 | 459,464 |

*Provisional

Table 17(c): Production of Assembled Vehicles

| | | | | | | Numbers |
|--------------|--------------|--------------|--------------|--------------|--------------|---------|
| Month | 2010 | 2011 | 2012 | 2013 | 2014 | 2015 |
| January | 299 | 290 | 387 | 435 | 511 | 601 |
| February | 521 | 413 | 588 | 536 | 792 | 949 |
| March | 510 | 462 | 303 | 496 | 737 | 988 |
| April | 438 | 449 | 594 | 584 | 798 | |
| May | 521 | 554 | 654 | 560 | 832 | |
| June | 550 | 550 | 588 | 609 | 856 | |
| July | 509 | 524 | 570 | 617 | 809 | |
| August | 460 | 553 | 588 | 578 | 828 | |
| September | 461 | 651 | 597 | 590 | 886 | |
| October | 460 | 660 | 585 | 652 | 887 | |
| November | 490 | 594 | 420 | 733 | 724 | |
| December | 502 | 349 | 344 | 558 | 586 | |
| Total | 5,721 | 6,049 | 6,218 | 6,948 | 9,246 | |

*Provisional

Table 17(d): Production of Galvanized Sheets

| | | | | | | Metric Tonnes |
|--------------|----------------|----------------|----------------|----------------|----------------|---------------|
| Month | 2010 | 2011 | 2012 | 2013 | 2014 | 2015* |
| January | 14,254 | 22,094 | 22,940 | 25,528 | 22,090 | 33,543 |
| February | 13,700 | 22,386 | 19,655 | 22,874 | 18,573 | |
| March | 20,095 | 22,928 | 21,507 | 26,296 | 21,267 | |
| April | 18,929 | 20,957 | 20,892 | 26,010 | 25,989 | |
| May | 18,842 | 24,744 | 22,197 | 23,866 | 27,433 | |
| June | 16,006 | 24,677 | 17,180 | 26,147 | 24,465 | |
| July | 16,790 | 24,906 | 21,411 | 25,007 | 21,779 | |
| August | 16,457 | 24,659 | 23,040 | 27,398 | 25,753 | |
| September | 16,299 | 17,988 | 23,268 | 25,051 | 26,126 | |
| October | 18,488 | 16,619 | 20,473 | 27,588 | 26,732 | |
| November | 16,219 | 22,104 | 21,969 | 26,628 | 25,763 | |
| December | 15,331 | 24,033 | 21,283 | 23,706 | 18,539 | |
| Total | 201,410 | 268,096 | 255,815 | 306,099 | 284,509 | |

*Provisional

Table 17(e): Cement Production and Consumption

| Metric Tonnes | | | | | | |
|---------------|------------------|------------------|------------------|------------------|------------|-------------|
| Month | 2013 | | 2014 | | 2015* | |
| | Production | Consumption | Production | Consumption | Production | Consumption |
| January | 393,921 | 342,296 | 454,960 | 387,809 | 511,298 | 459,227 |
| February | 380,032 | 336,756 | 442,636 | 354,576 | 465,471 | 417,591 |
| March | 367,673 | 279,129 | 478,416 | 420,345 | 533,294 | 465,956 |
| April | 365,579 | 306,196 | 468,022 | 433,787 | | |
| May | 414,161 | 337,866 | 464,695 | 458,219 | | |
| June | 422,519 | 361,839 | 464,929 | 421,855 | | |
| July | 454,288 | 373,767 | 503,428 | 422,394 | | |
| August | 432,938 | 373,466 | 492,801 | 440,336 | | |
| September | 453,542 | 381,272 | 499,479 | 441,527 | | |
| October | 487,594 | 407,151 | 553,186 | 483,033 | | |
| November | 464,834 | 392,733 | 545,041 | 487,396 | | |
| December | 422,048 | 374,015 | 492,944 | 445,404 | | |
| TOTAL | 5,059,129 | 4,266,487 | 5,882,537 | 5,196,682 | | |

*Provisional

Table 17(f): Milk Intakes in the Formal Sector

| | Million Litres | | | | | |
|--------------|----------------|--------------|--------------|--------------|--------------|-------|
| Month | 2010 | 2011 | 2012 | 2013 | 2014 | 2015* |
| January | 49.27 | 47.1 | 45.5 | 49.3 | 54.0 | 47.3 |
| February | 43.9 | 40.8 | 32.9 | 42.5 | 46.6 | 35.7 |
| March | 48.61 | 38.8 | 28.9 | 40.3 | 49.3 | 36.8 |
| April | 44.64 | 41.8 | 26.0 | 44.4 | 45.0 | 30.4 |
| May | 42.99 | 45.6 | 37.3 | 50.6 | 43.6 | |
| June | 37.58 | 45.7 | 46.2 | 44.5 | 44.5 | |
| July | 39.91 | 49.5 | 43.5 | 43.5 | 40.5 | |
| August | 38.63 | 46.4 | 45.5 | 37.9 | 41.8 | |
| September | 37.22 | 49.1 | 45.2 | 38.8 | 41.7 | |
| October | 41.68 | 50.3 | 47.8 | 38.9 | 43.5 | |
| November | 43.37 | 46.4 | 48.6 | 45.3 | 44.3 | |
| December | 43.0 | 47.7 | 47.9 | 47.0 | 46.6 | |
| Total | 510.8 | 549.0 | 495.2 | 523.0 | 541.1 | |

Source: Kenya Dairy Board

* Provisional

Fig. 12: Milk Intake in the Formal Sector

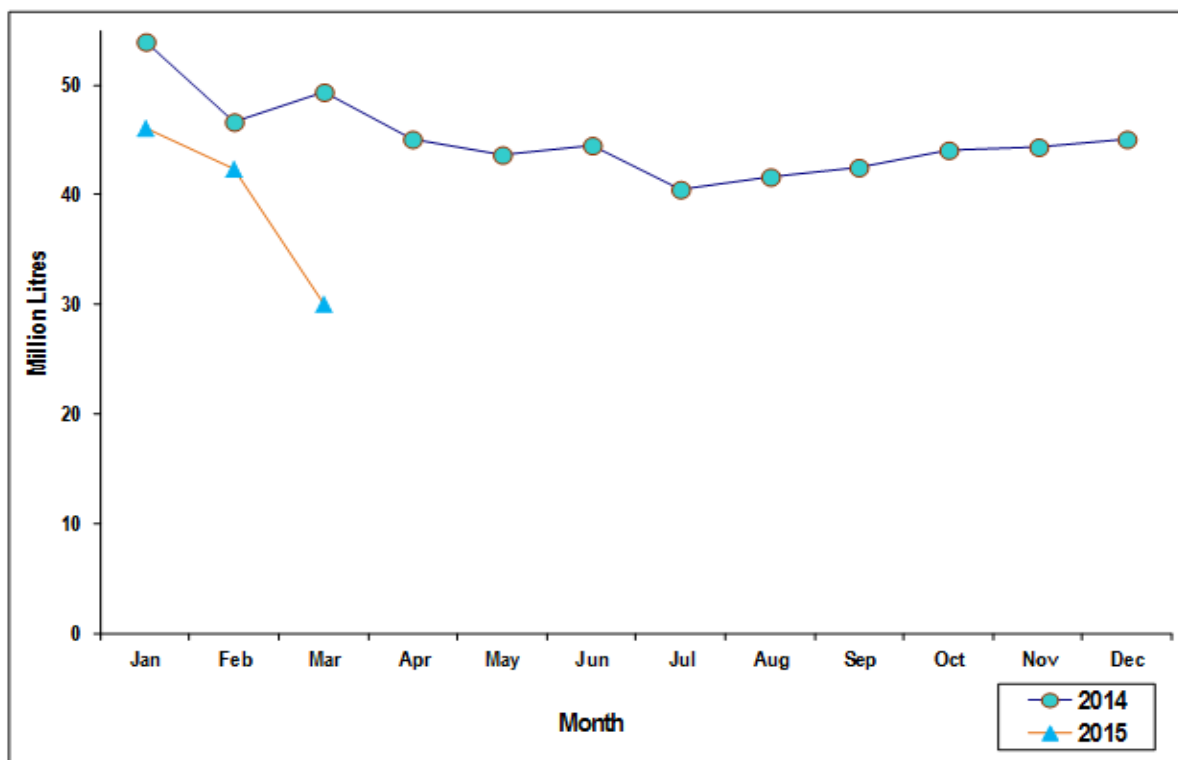


Table 18: Visitor Arrivals* through J.K.I.A and M.I.A

| Month | AIRPORT | | Numbers |
|-------------|---------|--------|---------|
| | JKIA | MIA | Total |
| 2013 | | | |
| January | 85,538 | 26,446 | 111,984 |
| February | 48,970 | 24,031 | 73,001 |
| March | 52,103 | 17,850 | 69,953 |
| April | 61,685 | 6,739 | 68,424 |
| May | 69,751 | 4,772 | 74,523 |
| June | 91,083 | 6,692 | 97,775 |
| July | 112,332 | 11,480 | 123,812 |
| August | 33,749 | 23,334 | 57,083 |
| September | 83,986 | 11,721 | 95,707 |
| October | 89,045 | 12,362 | 101,407 |
| November | 81,242 | 19,068 | 100,310 |
| December | 103,514 | 25,159 | 128,673 |
| 2014 | | | |
| January | 75,906 | 19,853 | 95,759 |
| February | 50,270 | 18,334 | 68,604 |
| March | 76,561 | 15,041 | 91,602 |
| April | 59,357 | 7,293 | 66,650 |
| May | 54,334 | 3,967 | 58,301 |
| June | 42,549 | 4,758 | 47,307 |
| July | 78,902 | 7,764 | 86,666 |
| August | 82,465 | 10,962 | 93,427 |
| September | 53,743 | 6,778 | 60,521 |
| October | 52,606 | 6,323 | 58,929 |
| November | 51,480 | 7,153 | 58,633 |
| December | 65,427 | 9,570 | 74,997 |
| 2015 | | | |
| January | 40,846 | 10,107 | 50,953 |
| February | 45,171 | 7,882 | 53,053 |
| March | 66,121 | 6,958 | 73,079 |
| April | 49,933 | 4,020 | 53,953 |

Source: Kenya Tourism Board

* Visitors arrivals exclude Kenyans

Fig. 13: Visitor Arrivals through J.K.I.A and M.I.A

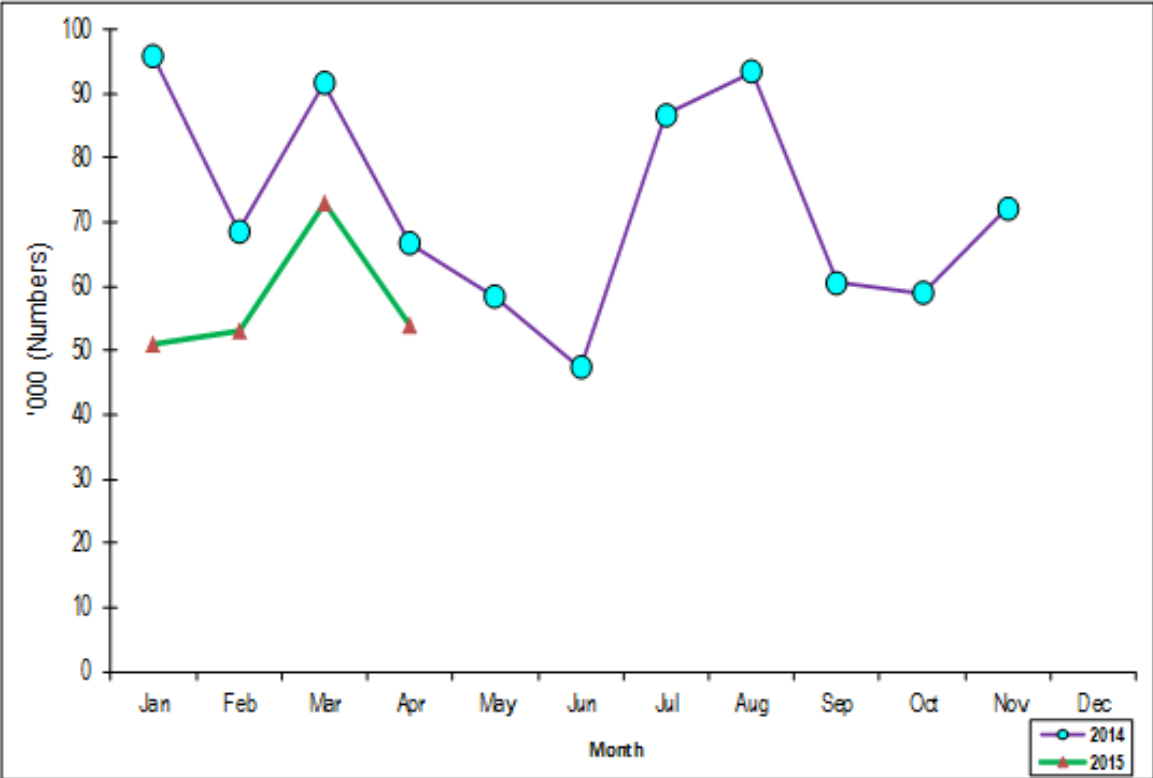


Table (19a): Jomo Kenyatta international airport-Embarked Passengers by Port of Destination

| PORTS/MONTH | 2013 | | | | | 2014 | | | | | | | | 2015 | | |
|----------------------|----------------|----------------|----------------|----------------|----------------|----------------|----------------|----------------|----------------|----------------|----------------|----------------|----------------|----------------|----------------|----------------|
| | Total | Jan | Feb | March | April | May | June | July | Aug | Sep | Oct | Nov | Dec | Jan | Feb | March |
| ADDIS ABABA (ADD) | 21,431 | 1,886 | 1,786 | 1,913 | 1,990 | 1,992 | 1,994 | 1,973 | 2,019 | 1,987 | 1,984 | 1,992 | 2,009 | 2,014 | 2,003 | 2,011 |
| CAIRO (CAI) | 32,928 | 2,379 | 2,301 | 2,312 | 2,270 | 2,165 | 2,235 | 2,244 | 2,307 | 2,284 | 2,676 | 2,679 | 2,742 | 2,801 | 2,748 | 2,797 |
| DAR ES SALAAM (DAR) | 114,392 | 9,385 | 9,016 | 8,353 | 8,426 | 8,391 | 8,398 | 8,427 | 8,387 | 8,420 | 8,551 | 8,391 | 8,298 | 8,195 | 8,201 | 8,211 |
| ENTEBBE (EBB) | 124,862 | 11,033 | 12,144 | 11,214 | 11,803 | 11,562 | 11,565 | 11,605 | 11,476 | 11,596 | 11,328 | 11,403 | 11,397 | 11,382 | 11,392 | 11,461 |
| HARARE (HRE) | 32,935 | 2,593 | 2,804 | 2,643 | 2,802 | 2,813 | 2,824 | 2,736 | 2,781 | 2,792 | 2,887 | 2,902 | 2,916 | 2,905 | 2,922 | 2,639 |
| JOHANNESBURG (JNB) | 134,625 | 10,893 | 10,667 | 10,690 | 11,003 | 10,914 | 10,932 | 10,855 | 10,930 | 10,630 | 10,379 | 10,680 | 10,881 | 10,692 | 10,864 | 10,968 |
| TOTAL AFRICA | 461,173 | 38,169 | 38,718 | 37,125 | 38,294 | 37,837 | 37,948 | 37,840 | 37,900 | 37,709 | 37,805 | 38,047 | 38,243 | 37,989 | 38,130 | 38,087 |
| BOMBAY (BOM) | 126,214 | 9,758 | 9,620 | 9,553 | 9,145 | 9,186 | 9,233 | 9,226 | 9,241 | 8,843 | 9,227 | 9,135 | 9,257 | 9,169 | 9,271 | 9,182 |
| DUBAI (DXB) | 220,195 | 18,697 | 18,535 | 18,378 | 17,692 | 17,234 | 17,647 | 17,549 | 18,073 | 21,948 | 21,906 | 22,260 | 22,301 | 22,331 | 22,302 | 22,371 |
| JEDAH (JED) | 18,285 | 1,832 | 2,115 | 2,078 | 2,337 | 2,200 | 2,241 | 2,322 | 2,385 | 2,167 | 1,840 | 1,947 | 1,986 | 2,001 | 1,990 | 2,017 |
| MUSCAT (MCT) | 435 | - | - | - | - | - | - | - | - | - | - | - | - | - | - | - |
| TOTAL ASIA | - | 30,287 | 30,270 | 30,009 | 29,174 | 28,620 | 29,121 | 29,097 | 29,699 | 32,958 | 32,973 | 33,342 | 33,544 | 33,501 | 33,563 | 33,570 |
| AMSTERDAM (AMS) | 365,948 | 11,758 | 11,883 | 12,478 | 13,270 | 14,411 | 13,580 | 13,794 | 13,423 | 13,231 | 14,876 | 14,876 | 14,742 | 14,831 | 14,789 | 14,840 |
| BRUSSELS (BRU) | 143,806 | 1,349 | 1,352 | 1,348 | 1,291 | 1,272 | 1,354 | 1,341 | 1,355 | 1,476 | 1,715 | 1,715 | 1,738 | 1,749 | 1,743 | 1,754 |
| LONDON (LON) | 15,276 | 18,263 | 17,445 | 15,679 | 16,369 | 16,559 | 16,701 | 16,778 | 17,556 | 17,556 | 17,556 | 17,556 | 17,602 | 17,581 | 17,610 | 15,682 |
| PARIS-(CDG)&(PAR) | 215,248 | 3,557 | 3,637 | 2,668 | 3,123 | 3,142 | 3,203 | 3,222 | 2,739 | 2,448 | 2,903 | 3,022 | 3,078 | 3,057 | 3,031 | 2,990 |
| ROME (ROM) | 46,744 | - | - | - | - | - | - | - | - | - | - | - | - | - | - | - |
| ZURICH (ZRH) | - | 3,167 | 3,029 | 3,062 | 3,029 | 2,978 | 2,944 | 2,951 | 3,029 | 2,968 | 3,015 | 3,066 | 3,098 | 3,087 | 3,061 | 3,111 |
| TOTAL(EUROPE) | 32,534 | 38,094 | 37,346 | 35,235 | 37,082 | 38,362 | 37,782 | 38,086 | 38,102 | 37,679 | 40,065 | 40,235 | 40,258 | 40,305 | 40,234 | 38,377 |
| OTHERS (TOTAL) ** | 453,608 | 72,012 | 70,223 | 71,146 | 70,132 | 70,101 | 70,070 | 70,159 | 70,109 | 70,209 | 70,420 | 71,123 | 70,878 | 70,971 | 71,180 | 72,773 |
| GRAND TOTAL | 865,443 | 178,562 | 176,557 | 173,515 | 174,682 | 174,920 | 174,921 | 175,182 | 175,810 | 178,555 | 181,263 | 182,747 | 182,923 | 182,766 | 183,107 | 182,807 |

Table (19b): Jomo Kenyatta international airport- Landed Passengers by Port of Origin

| PORTS/MONTH | 2013 | | | | | | | | | | | | 2014 | | | 2015 | | |
|--------------------------|------------------|----------------|----------------|----------------|----------------|----------------|----------------|----------------|----------------|----------------|----------------|----------------|----------------|----------------|----------------|----------------|--|--|
| | Total | Jan | Feb | March | April | May | June | July | Aug | Sep | Oct | Nov | Dec | Jan | Feb | March | | |
| ADDIS ABABA (ADD) | 19,167 | 1,859 | 1,816 | 1,823 | 2,016 | 2,028 | 2,040 | 2,056 | 2,044 | 2,074 | 2,164 | 2,109 | 2,078 | 2,103 | 2,084 | 1,999 | | |
| CAIRO (CAI) | 29,746 | 2,356 | 2,306 | 2286 | 2,263 | 2,156 | 2,049 | 2,063 | 2,113 | 2,059 | 2,059 | 2,797 | 2,698 | 2,669 | 2,602 | 2,676 | | |
| DAR ES SALAAM (DAR) | 105,077 | 9,465 | 8,394 | 8924 | 8,199 | 8,143 | 8,087 | 8,094 | 8,143 | 8,072 | 8,143 | 8,143 | 8,094 | 8,121 | 8,082 | 8,111 | | |
| ENTEBBE (EBB) | 112,895 | 10,987 | 10,854 | 12321 | 10,912 | 10,842 | 10,772 | 10,808 | 10,761 | 11,045 | 10,842 | 10,770 | 10,851 | 10,803 | 10,742 | 10,786 | | |
| HARARE (HRE) | 30,332 | 2,589 | 2,645 | 2,813 | 2,634 | 2,671 | 2,709 | 2,749 | 2,704 | 2,747 | 2,671 | 2,671 | 2,693 | 2,682 | 2,662 | 2,723 | | |
| JOHANNESBURG (JNB) | 122,200 | 10,897 | 10,730 | 11326 | 10,557 | 10,910 | 11,275 | 11,336 | 11,210 | 10,910 | 10,568 | 12,185 | 12,201 | 12,212 | 12,203 | 12,219 | | |
| TOTAL AFRICA | 419,417 | 38,153 | 36,745 | 39403 | 36,581 | 36,750 | 36,932 | 37,106 | 36,975 | 36,907 | 36,447 | 38,675 | 38,615 | 30,996 | 30,894 | 31,061 | | |
| BOMBAY (BOM) | 115,076 | 9,687 | 9,435 | 9,512 | 8,671 | 8,596 | 8,522 | 8,497 | 8,538 | 8,563 | 10,173 | 9,827 | 10,023 | 10,142 | 10,073 | 10,102 | | |
| DUBAI (DXB) | 198,971 | 18,741 | 18,369 | 17,782 | 17,812 | 15,491 | 15,970 | 16,057 | 17,966 | 19,230 | 19,243 | 18,957 | 19,185 | 19,307 | 19,196 | 19,278 | | |
| JEDAH (JED) | 16,684 | 1,847 | 1,869 | 2,175 | 2,146 | 2,352 | 2,329 | 2,362 | 2,419 | 1,874 | 1,966 | 1,697 | 1,599 | 1,547 | 1,625 | 1,681 | | |
| MUSCAT (MCT) | 1,239 | - | - | - | - | - | - | - | - | - | - | - | - | - | - | - | | |
| TOTAL ASIA | 331,970 | 30,275 | 29,673 | 29,469 | 28,629 | 26,439 | 26,821 | 26,916 | 28,923 | 29,667 | 31,382 | 30,481 | 30,807 | 30,996 | 30,894 | 31,061 | | |
| AMSTERDAM (AMS) | 121,630 | 11,765 | 12,623 | 12,097 | 13,231 | 13,198 | 13,513 | 13,165 | 13,126 | 12,902 | 16,106 | 15,954 | 16,054 | 15,977 | 16,066 | 16,130 | | |
| BRUSSELS (BRU) | 28,993 | 1,375 | 1,367 | 1,341 | 1,284 | 1,321 | 1,359 | 1,343 | 1,348 | 1,348 | 1,436 | 1,470 | 1,493 | 1,479 | 1,505 | 1,520 | | |
| LONDON (LON) | 181,662 | 18,258 | 15,694 | 16,213 | 16,069 | 16,047 | 16,061 | 16,078 | 16,064 | 13,537 | 14,670 | 15,457 | 15,514 | 15,465 | 15,416 | 15,513 | | |
| PARIS-(CDG)&(PAR) | 38,442 | 3,526 | 2,679 | 3,641 | 2,846 | 2,731 | 2,776 | 2,688 | 2,784 | 2,634 | 2,749 | 2,780 | 2,684 | 2,723 | 2,761 | 2,672 | | |
| ROME (ROM) | - | - | - | - | - | - | - | - | - | - | - | - | - | - | - | - | | |
| ZURICH (ZRH) | 28,850 | 3,156 | 3,143 | 3,042 | 2,987 | 2,894 | 2,913 | 2,822 | 3,039 | 2,987 | 2,972 | 3,375 | 3,364 | 3,370 | 3,385 | 3,047 | | |
| TOTAL(EUROPE) | 412,509 | 38,080 | 35,506 | 36,334 | 36,417 | 36,191 | 36,622 | 36,096 | 36,361 | 33,408 | 37,933 | 39,036 | 39,109 | 39,014 | 39,133 | 38,882 | | |
| OTHERS (TOTAL) ** | 796,287 | 71,879 | 71,839 | 70155 | 71129 | 71,638 | 71,786 | 71,798 | 72,240 | 71,689 | 72,395 | 73,208 | 72,927 | 72,716 | 72,499 | 73,196 | | |
| GRAND TOTAL | 1,960,183 | 178,387 | 173,760 | 175,361 | 172,756 | 171,018 | 172,161 | 171,916 | 174,499 | 171,671 | 178,499 | 181,400 | 181,458 | 181,316 | 181,501 | 181,653 | | |

** Port of Origin not listed

Table19 (c): New Vehicle Registration

| Type/Month | 2013 | | | | | | | | | | | | | | 2014 | | | |
|-----------------------------|----------------|---------------|---------------|---------------|---------------|---------------|---------------|---------------|---------------|---------------|---------------|---------------|---------------|----------------|---------------|---------------|---------------|---------------|
| | Total | Jan | Feb | Mar | Apr | May | June | July | Aug | Sept | Oct | Nov | Dec | Total | Jan | Feb | Mar | Apr |
| Saloons | 16,343 | 1,575 | 892 | 1,096 | 1,110 | 1,316 | 1,208 | 1,497 | 1,327 | 1,592 | 1,305 | 1,248 | 1,736 | 15,902 | 1,125 | 747 | 911 | 1,145 |
| Station Wagon | 48,662 | 4,611 | 2,729 | 3,585 | 3,492 | 4,638 | 4,068 | 4,876 | 4,610 | 5,320 | 4,685 | 4,582 | 6,346 | 53,542 | 4,504 | 3,362 | 3,649 | 4,080 |
| Vans, Pick- ups. etc | 9,819 | 956 | 1,409 | 924 | 794 | 1,050 | 862 | 971 | 1,054 | 1,113 | 1,111 | 1,144 | 1,180 | 12,568 | 1,170 | 1,223 | 1,488 | 1,126 |
| M/Buses | 235 | 4 | 11 | 7 | 12 | 15 | 9 | 22 | 23 | 12 | - | 25 | 73 | 213 | 64 | 37 | 27 | 26 |
| Buses | 2,062 | 110 | 165 | 128 | 132 | 150 | 165 | 198 | 255 | 228 | 214 | 220 | 245 | 2,210 | 188 | 191 | 239 | 167 |
| Lorries | 9,570 | 751 | 906 | 599 | 721 | 925 | 824 | 1,006 | 921 | 1,163 | 1,004 | 902 | 959 | 10,681 | 907 | 817 | 1,197 | 1,395 |
| Trailers | 3,973 | 251 | 255 | 244 | 204 | 241 | 216 | 244 | 269 | 229 | 218 | 321 | 233 | 2,925 | 307 | 400 | 327 | 324 |
| Motors Cycles | 125,058 | 6,437 | 10,719 | 8,367 | 5,609 | 5,203 | 6,054 | 6,962 | 23,357 | 13,835 | 7,835 | 7,523 | 9,223 | 111,124 | 6,262 | 9,742 | 16,196 | 11,691 |
| 3 Wheelers | 3,103 | 363 | 295 | 271 | 413 | 261 | 221 | 229 | 241 | 506 | 341 | 876 | 310 | 4,327 | 436 | 452 | 599 | 362 |
| Wheeled tractors | 1,902 | 205 | 227 | 171 | 152 | 145 | 202 | 224 | 151 | 106 | 160 | 163 | 126 | 2,032 | 173 | 225 | 225 | 200 |
| Others | 1,451 | 148 | 171 | 237 | 150 | 165 | 182 | 261 | 193 | 286 | 341 | 222 | 177 | 2,533 | 230 | 213 | 209 | 214 |
| TOTAL | 222,178 | 15,411 | 17,779 | 15,629 | 12,789 | 14,109 | 14,011 | 16,490 | 32,401 | 24,390 | 17,214 | 17,226 | 20,608 | 218,057 | 15,366 | 17,409 | 25,067 | 20,730 |

Source: Kenya Revenue Authority