



**Committee on Agriculture
Special Session
Sub-Committee on Cotton**

COTTON

BACKGROUND PAPER BY THE SECRETARIAT¹

1. The Ministerial Decision on Cotton of 7 December 2013 (document WT/MIN(13)/41 and WT/L/916 dated 11 December 2013) adopted by Ministers at the 9th WTO Ministerial Conference in Bali states, *inter alia* that:

"5. In this context, we therefore undertake to enhance transparency and monitoring in relation to the trade-related aspects of cotton. To this end, we agree to hold a dedicated discussion on a bi-annual basis in the context of the Committee on Agriculture in Special Session to examine relevant trade-related developments across the three pillars of Market Access, Domestic Support and Export Competition in relation to cotton.

6. The dedicated discussions shall be undertaken on the basis of factual information and data compiled by the WTO Secretariat from Members' notifications, complemented, as appropriate, by relevant information provided by Members to the WTO Secretariat.

7. The dedicated discussions shall in particular consider all forms of export subsidies for cotton and all export measures with equivalent effect, domestic support for cotton and tariff measures and non-tariff measures applied to cotton exports from LDCs in markets of interest to them."

2. As requested by the Ministerial Decision, the WTO Secretariat has prepared a compilation of factual information and data available from Members' notifications and other submissions, on Market Access, Domestic Support and Export Competition in relation to cotton.

3. The paper is organized in three parts, namely:

- Export Subsidies²;
- Domestic Support; and
- Market Access.

4. The factual information and data contained in this paper have been compiled from:

- Members' schedules and notifications in the Market Access (MA), Domestic Support (DS) and Export Subsidies (ES) series under the Committee on Agriculture;
- Tariff data available in the WTO Integrated Database (IDB) and Consolidated Tariff Schedules Database (CTS); as well as

¹ This document has been prepared under the Secretariat's own responsibility and is without prejudice to the position of Members or their rights or obligations under the WTO. It has been prepared for information only and is not intended to provide any authoritative or official legal interpretation of the provisions of the WTO Agreements in general or in relation to any measure listed in this document.

² As regards "all forms of export subsidies for cotton and all export measures with equivalent effect" referred to in paragraph 7 of the Bali Ministerial Decision, Members can also refer to the Secretariat background paper on export subsidies, export credits and export credit guarantees or insurance programmes, international food aid, and agricultural exporting STEs (document G/AG/W/125 and addenda).

- Non-tariff measures available in the WTO Integrated Trade Intelligence Portal (I-TIP) Goods Database.

5. The specific sources of information for each of the areas covered are described under the relevant parts of the paper.

6. With regards to Export Subsidies and Domestic Support (Part one and two of the paper), factual information and data were collected for all WTO Members with relevant commitments or who have reported measures benefitting cotton in their relevant notifications.

7. With regards to Market Access (Part three of the paper), the Ministerial Decision on Cotton notes that "the dedicated discussions shall in particular consider ... tariff measures and non-tariff measures applied to cotton exports from LDCs in markets of interest to them".

8. A list of markets of interest to LDCs was established by collecting market access data for WTO Members that are either: (i) classified as developed economies for the purpose of the WTO Secretariat note on the "Participation of Developing Economies in the Global Trading System"³; (ii) amongst the top 20 cotton importing countries in quantity for the period 2010-2012; or (iii) amongst the top 20 cotton importing countries in quantity from LDCs for the period 2010-2012.⁴

9. As a result, market access data are provided for the following 32 Members: Australia; Bahrain, Kingdom of; Bangladesh; Brazil; Canada; China; Colombia; Egypt; the European Union; Hong Kong, China; Iceland; India; Indonesia; Japan; Kenya; Korea, Republic of; Malaysia; Mauritius; Mexico; Morocco; New Zealand; Norway; Pakistan; Peru; Russian Federation; South Africa; Switzerland; Chinese Taipei; Thailand; Turkey; the United States of America and Viet Nam.

10. Finally, unless otherwise indicated, the term "cotton" in this paper refers to the products covered by the Harmonized System nomenclature (HS) headings 52.01, 52.02 and 52.03.

³ Document WT/COMTD/W/201, Appendix 7 with the European Union counted as one and Switzerland and Liechtenstein also counted as one.

⁴ The top 20 cotton importing countries were identified using COMTRADE data processed by the WTO Secretariat, and supplemented by data from the International Cotton Advisory Committee (ICAC).

TABLE OF CONTENTS

1 EXPORT SUBSIDIES	6
1.1 EXPORT SUBSIDY COMMITMENTS	6
1.1.1 Bound export subsidy commitments for cotton	7
Brazil	7
Colombia	7
Israel	7
South Africa	8
1.2 NOTIFIED EXPORT SUBSIDIES	9
1.2.1 Notified budgetary outlays and quantities for cotton (Table ES:1)	10
Brazil	10
Colombia	10
Israel	10
South Africa	11
United States of America.....	11
1.2.2 Notified budgetary outlays and quantities for cotton (Supporting Table ES:2)	12
India.....	12
2 DOMESTIC SUPPORT	13
2.1 PRODUCT SPECIFIC AGGREGATE MEASUREMENT OF SUPPORT	13
2.1.1 Product-specific AMS notified for cotton	14
Brazil	14
China	14
Colombia	14
European Union	15
India	15
Israel	15
Mexico	15
Peru.....	16
South Africa	16
United States of America.....	16
Viet Nam	17
2.2 DIRECT PAYMENTS IN ACCORDANCE WITH ARTICLE 6.5	18
European Union	18
United States of America.....	18
3 MARKET ACCESS	19
3.1 TARIFFS.....	20
Australia.....	21
Bahrain, Kingdom of.....	21
Bangladesh.....	22

Brazil	22
Canada	22
China	23
Colombia	23
Egypt	23
European Union	24
Hong Kong, China	25
Iceland	25
India	25
Indonesia	26
Japan	26
Kenya	26
Korea, Republic of	26
Malaysia	27
Mauritius	27
Mexico	27
Morocco	28
New Zealand	28
Norway	29
Pakistan	29
Peru	29
Russian Federation	30
South Africa	30
Switzerland	30
Chinese Taipei	31
Thailand	31
Turkey	31
United States of America	32
Viet Nam	33
3.2 SPECIAL SAFEGUARD PROVISIONS	34
3.2.1 Scheduled SSG provisions for cotton	34
3.2.2 Notified trigger prices for cotton	35
United States of America (G/AG/N/USA/1)	35
3.2.3 Invoked price-based SSG for cotton	35
United States of America (Table MA:5)	35
3.3 TARIFF RATE QUOTAS	36
3.3.1 Tariff rate quota commitments for cotton	36
China	36
Colombia	36
South Africa	37

United States of America.....	37
3.3.2 Most recent Tariff Rate Quota administration method notified for cotton.....	37
China	37
Colombia	38
South Africa	38
United States of America.....	38
3.3.3 TRQ quantities and in-quota imports for cotton	40
China	41
Colombia	41
South Africa	41
United States of America.....	41
3.4 OTHER NON TARIFF MEASURES.....	43
ANNEX 1	72
ANNEX 2	75
ANNEX 3	78

1 EXPORT SUBSIDIES

1.1. Part One provides information on the use of export subsidies for cotton by Members. It is divided into two sections:

- Section 1.1 provides information on export subsidy reduction commitments, both in terms of budgetary outlay and quantity; and
- Section 1.2 provides information on notified export subsidy budgetary outlays and quantities.

1.2. As noted earlier, with regards to "*all forms of export subsidies for cotton and all export measures with equivalent effect*" referred to in paragraph 7 of the Bali Ministerial Decision, Members can also refer to the Secretariat background paper on export subsidies, export credits and export credit guarantees or insurance programmes, international food aid, and agricultural exporting STEs (document G/AG/W/125 and addenda). It can be noted in that regard that: (i) China listed in its reply to the questionnaire on export competition circulated to WTO Members on 10 February 2014, four agricultural exporting State Trading Enterprises for cotton; and (ii) the United States and Japan respectively identified in their replies cotton and HS5202-5203 in the list of products covered by their export financing programmes.

1.1 EXPORT SUBSIDY COMMITMENTS

1.3. This section lists export subsidy reduction commitments for cotton by Member and by implementation year⁵, as specified in Members' schedules. The tables show, for each Member concerned, the annual and final bound export subsidy budgetary outlay and quantity commitments. The following column headings are used:

XSID	The number identifying export subsidy commitments for each Member in the CTS, in the same sequential order as scheduled. The seven-character code is comprised of the three-letter WTO Member code, followed by "X" for "export subsidy", followed by the three-digit sequential identifier;
Product	The product or group of products as specified in the Member's schedule ⁶ ;
Tariff Line(s)	The tariff item number(s) as specified in the Member's schedule reproduced in the CTS using the HS 2002 nomenclature; and
1995...	Budgetary outlay and quantity commitments for each implementation year.

1.4. For each Member, the currency/quantity unit and the type of year (i.e. calendar, financial, fiscal or marketing year) are indicated as specified in that Member's schedule.

⁵ Throughout this paper, the term "implementation year" refers to the relevant calendar, financial, fiscal or marketing year as specified by individual Members.

⁶ In original language only.

1.1.1 Bound export subsidy commitments for cotton

Brazil

Budgetary outlays commitments in US\$

XSID	Product	Tariff Line(s)	1995	1996	1997	1998	1999	2000	2001	2002	2003	2004
BRAX013	Cotton	520100	208,534.1	203,406.2	198,278.3	193,150.4	188,022.6	182,894.7	177,766.8	172,638.9	167,511.0	162,383.1

Quantity commitments in tonnes

XSID	Product	Tariff Line(s)	1995	1996	1997	1998	1999	2000	2001	2002	2003	2004
BRAX013	Cotton	520100	3,670.9	3,618.8	3,566.6	3,514.5	3,462.4	3,410.3	3,358.1	3,306.0	3,253.9	3,201.8

Colombia

Budgetary outlays commitments in US\$

XSID	Product	Tariff Line(s)	1995	1996	1997	1998	1999	2000	2001	2002	2003	2004
COLX018	ALGODON	5201, 5202, 5203	71,394,099	71,394,099	69,438,096	67,482,094	65,526,091	63,570,088	61,614,085	59,658,083	57,702,080	55,746,077

Quantity commitments in tonnes

XSID	Product	Tariff Line(s)	1995	1996	1997	1998	1999	2000	2001	2002	2003	2004
COLX018	ALGODON	5201, 5202, 5203	38,588	38,588	37,978	37,368	36,759	36,149	35,539	34,929	34,320	33,710

Israel

Budgetary outlays commitments in thousand US\$

XSID	Product	Tariff Line(s)	1995	1996	1997	1998	1999	2000	2001	2002	2003	2004
ISRX006	Cotton		9,410	9,179	8,948	8,716	8,485	8,253	8,022	7,791	7,559	7,328

Quantity commitments in thousand tonnes

XSID	Product	Tariff Line(s)	1995	1996	1997	1998	1999	2000	2001	2002	2003	2004
ISRX006	Cotton		47.1	46.4	45.8	45.1	44.4	43.8	43.1	42.4	41.8	41.1

South Africa

Budgetary outlays commitments in rand (calendar year)

XSID	Product	Tariff Line(s)	1995	1996	1997	1998	1999	2000	2001	2002	2003	2004
ZAFX062	Cotton	5201, 5202, 5203	4,157,081	3,891,736	3,626,390	3,361,045	3,095,699	2,830,353	2,830,353	2,830,353	2,830,353	2,830,353

Quantity commitments in tonne equivalent (calendar year)

XSID	Product	Tariff Line(s)	1995	1996	1997	1998	1999	2000	2000	2000	2000	2000
ZAFX062	Cotton	5201, 5202, 5203	4,600	4,433	4,266	4,100	3,933	3,766	3,766	3,766	3,766	3,766

1.2 NOTIFIED EXPORT SUBSIDIES

1.5. This section lists export subsidies for cotton notified by Members in Table ES:1 as well as export subsidies for cotton notified in Supporting Tables ES:2 by developing country Members who have taken recourse to Article 9.4 of the Agreement on Agriculture. This section includes notifications circulated by the Secretariat up to 30 April 2014.

1.6. The following column headings are used:

XSID The number identifying export subsidy commitments for each Member in the CTS, in the same sequential order as scheduled. The seven-character code is comprised of the three-letter WTO Member code, followed by "X" for "export subsidy", and by the three-digit sequential identifier. A blank indicates that no export subsidy reduction commitments are scheduled for the product in question;

Product The product or group of products as specified in the Member's schedule⁷ or in the Member's notification; and

1995... The notified budgetary outlay or quantity for each implementation year from 1995 up to the latest implementation year as indicated in the Member's most recent Table ES:1 notification. A blank indicates that no notification has been received for the year in question or that, for Members without scheduled export subsidy commitments for cotton, the notification does not mention cotton.

1.7. For each Member, the currency/quantity unit and the type of year (i.e. calendar, financial, fiscal or marketing year) are indicated as specified in that Member's schedule or in the Member's notification.

⁷ In original language only.

1.2.1 Notified budgetary outlays and quantities for cotton (Table ES:1)

Brazil

Notified budgetary outlays in US\$ (calendar year)

XSID	Product	1995	1996	1997	1998	1999	2000	2001	2002	2003	2004	2005	2006	2007	2008	2009	2010	2011	2012
BRAX013	Cotton	0	0	0	0	0	0	0	0	0	0	0	0	0	0	0	0	0	0

Notified quantities in tonnes (calendar year)

XSID	Product	1995	1996	1997	1998	1999	2000	2001	2002	2003	2004	2005	2006	2007	2008	2009	2010	2011	2012
BRAX013	Cotton	0	0	0	0	0	0	0	0	0	0	0	0	0	0	0	0	0	0

Colombia

Notified budgetary outlays in thousand US\$ (calendar year)

XSID	Product	1995	1996	1997	1998	1999	2000	2001	2002	2003	2004	2005	2006	2007	2008	2009	2010
COLX018	ALGODON	0.21 ¹	0	0	0	0	0	0	0	0	0	0	0	0	0	0	0

Notified quantities in tonnes (calendar year)

XSID	Product	1995	1996	1997	1998	1999	2000	2001	2002	2003	2004	2005	2006	2007	2008	2009	2010
COLX018	ALGODON	0.72	0	0	0	0	0	0	0	0	0	0	0	0	0	0	0

Israel

Notified budgetary outlays in thousand US\$ (marketing year, 1 October-30 September)

XSID	Product	1995	1996	1997	1998	1999	2000	2001	2002	2003	2004	2005	2006	2007	2008	2009	2010	2011	2012
ISRX006	Cotton	0	0	0	0	0	0	0	886 ²	0	0			0	0	0	0	0	0

Notified quantities in thousand tonnes (marketing year, 1 October-30 September)

XSID	Product	1995	1996	1997	1998	1999	2000	2001	2002	2003	2004	2005	2006	2007	2008	2009	2010	2011	2012
ISRX006	Cotton	0	0	0	0	0	0	0	0.6	0	0			0	0	0	0	0	0

South Africa

Notified budgetary outlays in rand (calendar year)

XSID	Product	1995	1996	1997	1998	1999	2000	2001	2002	2003	2004	2005	2006	2007	2008	2009	2010
ZAFX062	Cotton	5,654 ¹	0	0	0	0	0	0	0	0	0	0	0	0	0	0	0

Notified quantities in tonnes (calendar year)

XSID	Product	1995	1996	1997	1998	1999	2000	2001	2002	2003	2004	2005	2006	2007	2008	2009	2010
ZAFX062	Cotton	36	0	0	0	0	0	0	0	0	0	0	0	0	0	0	0

United States of America

Notified budgetary outlays in thousand US\$ (fiscal year beginning 1 October-30 September)

XSID	Product	1995	1996	1997	1998	1999	2000	2001	2002	2003	2004	2005	2006	2007	2008	2009	2010
	Upland Cotton ³									203,595.4 ¹	276,500.0 ¹	266,943.5 ¹	9,353.0 ¹	0	0	0	0

Notified quantities in thousand tonnes (1 July-30 June)

XSID	Product	1995	1996	1997	1998	1999	2000	2001	2002	2003	2004	2005	2006	2007	2008	2009	2010
	Upland Cotton ³									2,357.4	2,412.6	3,641.5	1,291.8	0	0	0	0

¹ Direct export subsidies (as indicated in Supporting Table ES:1).

² Producer financed subsidies (as indicated in Supporting Table ES:1).

³ For U.S. notifications covering the implementation years 2003-2005, the following footnote was included: "The panel and Appellate Body reports in the dispute United States of America – Subsidies on Upland Cotton (DS267) found that certain payments to exporters under the Upland Cotton Domestic Marketing Certificate Program constituted export subsidies within the meaning of the Agreement on Agriculture. On 8 February 2006, the United States of America enacted legislation to repeal the programme at the end of the 2005 marketing year (i.e., 31 July 2006). Quantity and budgetary data are based on when payments were made." For U.S. notifications covering the implementation years 2006-2010, the following footnote was included: "The panel and Appellate Body reports in the dispute United States – Subsidies on Upland Cotton (DS267) found that certain payments to exporters under the Upland Cotton Domestic Marketing Certificate Program constituted export subsidies within the meaning of the Agreement on Agriculture. On 8 February 2006, the United States enacted legislation to repeal the program at the end of the 2005 marketing year (i.e., 31 July 2006). All cotton under the program was shipped by 31 July 2006; quantity and budgetary data are based on when payments were made."

1.2.2 Notified budgetary outlays and quantities for cotton (Supporting Table ES:2)

India

Notified budgetary outlays in million US\$ (marketing year)

XSID	Product	1995	1996	1997	1998	1999	2000	2001	2002	2003	2004	2005	2006	2007	2008	2009
	Raw cotton (Full pressed bales)										0.089 ¹	1.21 ¹				

Notified quantities in tonnes (marketing year)

XSID	Product	1995	1996	1997	1998	1999	2000	2001	2002	2003	2004	2005	2006	2007	2008	2009
	Raw cotton (Full pressed bales)										2,542	40,392				

¹ International Air Freight Assistance in terms of Article 9.1 (d) (as indicated in the footnote in India's Supporting Table ES:2 for implementation years 2004 and 2005).

2 DOMESTIC SUPPORT

2.1. Part Two provides information on the use of domestic support measures in favour of cotton based on Table DS:1 notifications circulated by the Secretariat up to 30 April 2014. It is divided into two sections:

- Section 2.1 provides information on product-specific Aggregate Measurement of Support⁸ as notified in Supporting Tables DS:4 to DS:8; and
- Section 2.2 provides information on direct payments in accordance with Article 6.5 as notified in Supporting Table DS:3.

2.1 PRODUCT SPECIFIC AGGREGATE MEASUREMENT OF SUPPORT

2.2. This section details the level of product-specific AMS for cotton by Member and by implementation year.

2.3. The levels of the various domestic support categories that compose the product-specific AMS for cotton are also listed. The different categories are the following:

- market price support (Supporting Table DS:5);
- non-exempt direct payments (Supporting Table DS:6);
- other product-specific support (Supporting Table DS:7); and
- product-specific support calculated using the Equivalent Measurement of Support (EMS) methodology (Supporting Table DS:8).

2.4. For each Member, the implementation years are those indicated in the Member's Table DS:1 notifications, and the notified currency unit is indicated in brackets.

Symbols used

Product-specific AMS figures in italic and underlined represent support claimed as *de minimis*.

A blank indicates the absence of a notification for the year in question.

"0" indicates that the Member notified zero support or that the Member has not notified any support for the support category concerned.

Figures in brackets represent negative support.

⁸ Also referred to as product-specific AMS. Throughout this paper, this term also includes the product-specific Equivalent Measurement of Support calculated according to Annex 4 of the Agreement on Agriculture.

2.1.1 Product-specific AMS notified for cotton⁹

Brazil

(Thousand US\$)

	1995	1996	1997	1998	1999	2000	2001	2002	2003	2004	2005	2006	2007	2008	2009	2010	2011
Market price support	33,860.69	40.9	6.1	9,893.1	(4,873.8)	(4,884.1)	(20,445.5)	(350.5)	0	0	0	315.8	186.0	259.8	0	0	0
Non-exempt direct payments	0	0	0	0	0	0	0	0	0	0	0	39,108.4	341,621.9	324,868.2	0	269,018.9	0
Other product-specific support	12,585.78	12,710.4	10,278.2	45,531.0	35,080.3	55,307.7	52,105.9	27,731.4	18,073.9	27,427.5	44,324.6	43,287.5	0	0	0	0	0
Product-specific EMS	0	0	0	0	0	0	0	0	0	0	0	0	0	0	0	0	0
Product-specific AMS	46,446.47	12,751.3	10,284.3	55,424.1	35,080.3	55,307.7	52,105.9	27,731.4	18,073.9	27,427.5	44,324.6	82,711.7	341,807.9	325,128.0	0	269,018.9	0

China

(Million RMB)

	1999	2000	2001	2002	2003	2004	2005	2006	2007	2008
Market price support	0	0	0	0	0	0	0	0	0	0
Non-exempt direct payments	0	0	0	0	0	0	0	0	0	0
Other product-specific support	2,854 ¹	3,503 ¹	1,790 ¹	1,205.6 ²	1,034 ²	973.91 ²	1,100.39 ³	880.35 ³	4,099.45 ³	2,766.73 ³
Product-specific EMS	0	0	0	0	0	0	0	0	0	0
Product-specific AMS	2,854	3,503	1,790	1,205.6	1,034	973.91	1,100.39	880.35	4,099.45	2,766.73

Colombia

(Thousand US\$)

	1995	1996	1997	1998	1999	2000	2001	2002	2003	2004	2005	2006	2007	2008	2009	2010
Market price support	0	0	0	0	0	0	0	0	0	0	0	0	0	0	0	0
Non-exempt direct payments	2,980	289.2	1,002.6	757	2,306.5	1,115	2,899	8,983.5	20.5	10,445.4	30,595	18,091	24,775	17,755	25,261	25,592
Other product-specific support	0	0	0	0	0	0	0	0	0	0	0	0	0	0	0	0
Product-specific EMS	0	0	0	0	0	0	0	0	0	0	0	0	0	0	0	0
Product-specific AMS	2,980	289.2	1,002.6	757	2,306.5	1,115	2,899	8,983.5	20.5	10,445.4	30,595	18,091	24,775	17,755	25,261	25,592

⁹ For implementation years 1995-1999, Pakistan maintained a positive applied administered price for "seed cotton", but Market Price Support was calculated as zero because there was no eligible production.

European Union

(Million EUR)

	1995	1996	1997	1998	1999	2000	2001	2002	2003	2004	2005	2006	2007	2008	2009	2010
Market price support	0	0	0	0	0	0	0	0	0	0	0	0	0	0	0	0
Non-exempt direct payments	22.7	0	0	0	0	0	0	0	0	0	0	0	0	0	0	0
Other product-specific support	0	0	0	0	0	0	0	0	0	0	0	0	0	0	0	0
Product-specific EMS	777.7	772.7	809.4	715.2	623.7	795	575.1	731.3	769.4	725.4	739.5	0	0	0	0	0
Product-specific AMS	800.4	772.7	809.4	715.2	623.7	795	575.1	731.3	769.4	725.4	739.5	0	0	0	0	0

India

(Million US\$)

	1995	1996	1997	1998	1999	2000	2001	2002	2003
Market price support	(2,106)	0	0	(64.79)	(72.45)	(91.46)	(147.3)	(94.01)	(140.62)
Non-exempt direct payments	0	0	0	0	0	0	0	0	0
Other product-specific support	0	0	0	0	0	0	0	0	0
Product-specific EMS	0	0	0	0	0	0	0	0	0
Product-specific AMS	(2,106)	0	0	(64.79)	(72.45)	(91.46)	(147.3)	(94.01)	(140.62)

Israel

(Thousand US\$)

	1995	1996	1997	1998	1999	2000	2001	2002	2003	2004	2005	2006	2007	2008	2009	2010
Market price support	0	0	0	0	0	0	0	0	0	0	0	0	0	0	0	0
Non-exempt direct payments	0	0	0	0	0	4,713	0	0	0	0	0	0	0	0	0	0
Other product-specific support	0	0	0	0	0	0	0	0	0	0	0	0	0	0	0	0
Product-specific EMS	0	0	0	0	0	0	0	0	0	0	0	0	0	0	0	0
Product-specific AMS	0	0	0	0	0	4,713	0	0	0	0	0	0	0	0	0	0

Mexico

(Million 1991 Mex\$)

	1995	1996	1997	1998	1999	2000	2001	2002	2003	2004	2005	2006	2007
Market price support	0	0	0	0	0	0	0	0	0	0	0	0	0
Non-exempt direct payments	71.01	0	0	0	0	0	0	42.1	0.6	71.1	127.8	59.4	104.8

	1995	1996	1997	1998	1999	2000	2001	2002	2003	2004	2005	2006	2007
Other product-specific support	0	2.2	3.4	9	5.8	2.1	1.4	23	23.5	7.9	7.4	0	31
Product-specific EMS	0	0	0	0	0	0	0	0	0	0	0	0	0
Product-specific AMS	71.01	2.2	3.4	9	5.8	2.1	1.4	65.2	24.1	79	135.2	59.4	135.8

Peru

(Million US\$)

	1995	1996	1997	1998	1999	2000	2001	2002	2003	2004	2005	2006	2007	2008	2009	2010
Market price support	0	0	0		0	0	0	0	0	0	0	0	0	0	0	0
Non-exempt direct payments	0	0	0		0	0	0	6.2	5.4	7	7.9	6.9	6.2	5.8	0	0
Other product-specific support	0	0	0		0	0	0	0	0	0	0	0	0	0	0	0
Product-specific EMS	0	0	0		0	0	0	0	0	0	0	0	0	0	0	0
Product-specific AMS	0	0	0		0	0	0	6.2	5.4	7	7.9	6.9	6.2	5.8	0	0

South Africa

(Million rand)

	1995	1996	1997	1998	1999	2000	2001	2002	2003	2004	2005	2006	2007	2008	2009	2010
Market price support	0	46.66	33.74	(4.81)	(42.95)	0	0	0	0	0	0	0	0	0	0	0
Non-exempt direct payments	0	0	0	0	0	0	0	0	0	0	0	0	0	0	0	0
Other product-specific support	0	0	0	0	0	0	0	0	0	0	0	0	0	0	0	0
Product-specific EMS	4.2	0	0	0	0	0	0	0	0	0	0	0	0	0	0	0
Product-specific AMS	4.2	46.66	33.74	(4.81)	(42.95)	0	0	0	0	0	0	0	0	0	0	0

United States of America

(Million US\$)

	1995	1996	1997	1998	1999	2000	2001	2002	2003	2004	2005	2006	2007	2008	2009	2010	2011
Market price support	0	0	0	0	0	0	0	0	0	0	0	0	0	0	0	0	0
Non-exempt direct payments	34.962	6.401	444.942	824.027	2,136.897	987.003	2,723.039	921.055	185.501	1,790.501	1,283.707	1,080.050	0.831	953.161	33.119	0	0.001
Other product-specific support	(3)	(3)	20.678	110.653	216.238	62.75	87.073	265.738	249.413	447.914	336.992	285.127	207.079	176.802	115.154	81.249	75.083
Product-specific EMS	0	0	0	0	0	0	0	0	0	0	0	0	0	0	0	0	0
Product-specific AMS	31.962	3.401	465.62	934.68	2,353.135	1,049.753	2,810.112	1,186.793	434.914	2,238.415	1,620.699	1,365.177	207.91	1,129.963	148.273	81.249	75.084

Viet Nam

(Billion VND)

	2007	2008
Market price support	0	0
Non-exempt direct payments	0	0
Other product-specific support	0.074	0
Product-specific EMS	0	0
Product-specific AMS	<u>0.074</u>	0

¹ The following footnote was included in China's notification covering implementation years 1999-2001: "From the year 1999, cotton purchase in China became market oriented and the State Procurement Pricing for Cotton did not work any longer. Therefore, there was no price support in this reporting period. The product-specific *de minimis* supports to cotton were primarily provided through interest subsidies for national cotton stockholdings."

² The following footnote was included in China's notification covering implementation years 2002-2004: "Support to cotton include interest subsidy for national stock cotton."

³ The following footnote was included in China's notification covering implementation years 2005-2008: "Support to cotton includes subsidy for improved crop strains and seeds, subsidy for reserve cost, cost subsidy for transporting cotton out of Xinjiang Uygur Autonomous Region."

2.2 DIRECT PAYMENTS IN ACCORDANCE WITH ARTICLE 6.5

2.5. This section details the levels of direct payments for cotton in accordance with Article 6.5 as notified in Supporting Table DS:3. Since 1995, two Members have notified this type of support for cotton: the European Union from implementation year 2006 and the United States of America for 1995 only.

2.6. The notified currency unit is indicated in brackets in the title for both Members.

European Union

(Million EUR)

Description of Measure	2006	2007	2008	2009	2010
Payments based on fixed area and yields: Cotton (Title IV, Chapter 10a of R 1782/2003) ¹	254.5	247.5	216.9	221.7	247.3

¹ As of 2009, the reference for the payment also includes Title IV, Chapter 1 of Regulation 73/2009.

United States of America

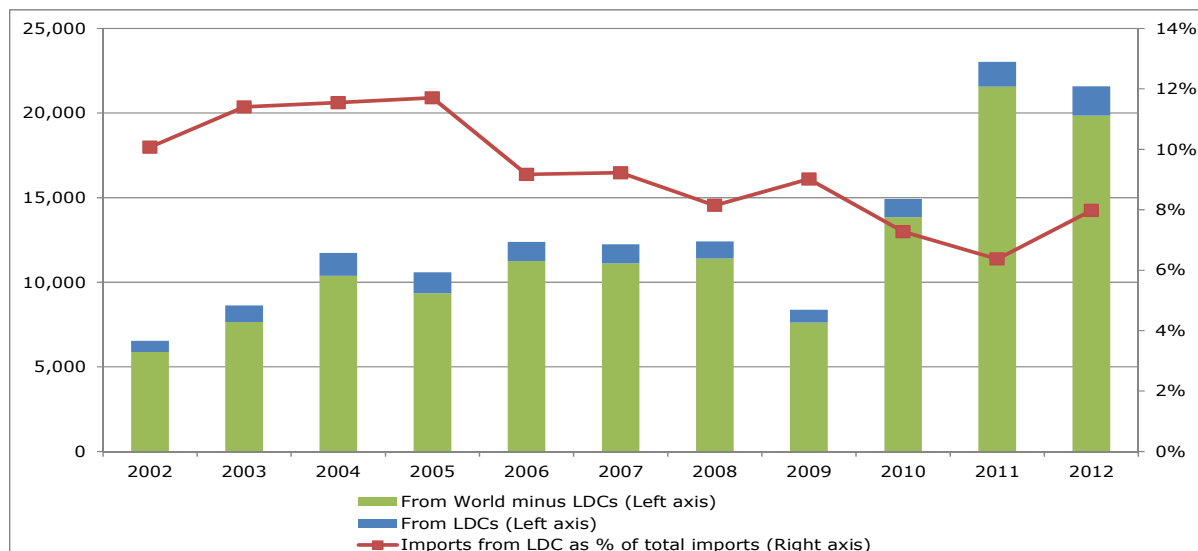
(Million US\$)

Description of Measure	1995
Payments based on 85% or less of base level of production: Deficiency payments for marketing year 1995 were only made on 85 percent of base acreage and program yields have been held constant.	901.022

3 MARKET ACCESS

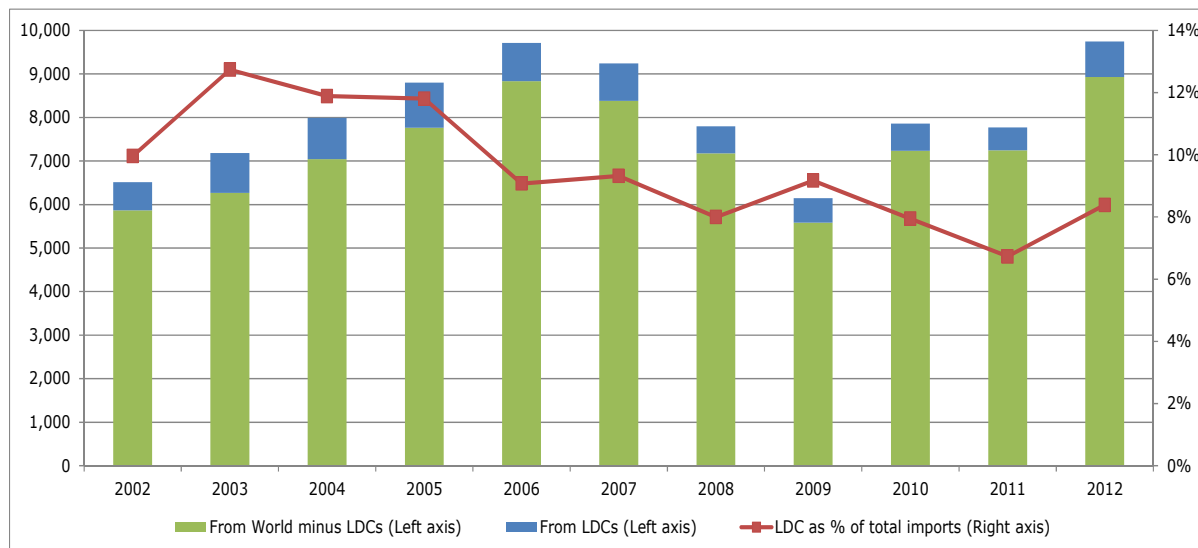
3.1. By way of an introduction to Part Three on tariffs and other non-tariff measures relevant to market access for cotton, the following overview charts show the evolution of total imports of cotton with a breakdown between imports from LDCs and from the rest of the world, in value and volume, over the period 2002-2012.

Total imports of cotton¹ (HS codes 5201, 5202, 5203), World and LDCs, 2002-2012 in value (US\$ Million)



¹ Sum of available reporters - Source UN Comtrade.

Total imports of cotton¹ (HS codes 5201, 5202, 5203) from World and LDCs, 2002-2012 (thousand tonnes)



¹ Sum of available reporters - Source UN Comtrade.

3.2. As explained at the beginning of this background paper, Part Three on Market Access provides information on the cotton tariff levels and the use of various non-tariff measures for the 32 Members identified as per paragraphs 6 to 8. Part Three is divided into four sections:

- Section 3.1 lists bound and applied tariffs for cotton based on (i) Members' schedules as reflected in the CTS database, and (ii) data on applied tariffs contained in the IDB database;
- Section 3.2 provides information on the special safeguard provisions for cotton based on Members' schedules and Table MA:3, MA:4 and MA:5 notifications;

- Section 3.3 provides information on cotton tariff rate quotas based on Members' schedules and Table MA:1 and MA:2 notifications; and
- Section 3.4 lists various other non-tariff measures, based on data contained in the WTO I-TIP Goods database.

3.1 TARIFFS

3.3. This section lists bound and applied duties for cotton for the 32 Members identified in paragraphs 6 to 8 of this paper.

3.4. The following first table shows the average and maximum bound and applied duties for the cotton product group¹⁰, as they appear in the World Tariff Profile 2013¹¹. The methodology used to calculate these average and maximum duties, in particular the averaging and the *ad valorem* equivalent calculation, can be found in the World Tariff Profile 2013.

Bound and Applied Tariff from World Tariff Profile 2013 for Cotton Product Group

Name	Year of applied tariff	Average Duty		Maximum Duty	
		Bound	Applied	Bound	Applied
Australia	2012	1.2	0	2	0
Bahrain, Kingdom of	2012	35	5	35	5
Bangladesh	2011	200	3.5	200	5
Brazil	2012	55	6.9	55	10
Canada	2012	0.8	0	8	0
China	2011	22	14.9	40	40
Colombia	2012	75.8	5	99	5
Egypt	2012	5	4	5	5
European Union	2012	0	0	0	0
Hong Kong, China	2012	0	0	0	0
Iceland	2012	2.2	0	11	0
India	2012	110	6	150	30
Indonesia	2012	37.4	4	40	5
Japan	2012	0	0	0	0
Kenya	2012	100	0	100	0
Korea, Republic of	2012	2	0	2	0
Malaysia	2012	4	0	5	0
Mauritius	2012	122	0	122	0
Mexico	2012	39.4	0	45	0
Morocco	2012	22	2.5	34	2.5
New Zealand	2012	0	0	0	0
Norway	2012	0	0	0	0
Pakistan	2012	13	7	25	10
Peru	2011	30	6	30	6
Russian Federation	2012	0	0	0	0
South Africa	2012	60	4.6	60	15
Switzerland-Liechtenstein	2012	0	0	0	0
Chinese Taipei	2012	0	0	0	0
Thailand	2011	4.5	0	4.5	0
Turkey	2011	10.92	0	12.6	0
United States of America	2012	4.4	4.1	16.2	14.7
Viet Nam	2012	14	6	20	10

¹⁰ Corresponding to the Harmonized System nomenclature 2012 (HS 2012) headings 52.01 to 52.03, i.e. the definition of "cotton" in this document.

¹¹ http://www.wto.org/english/res_e/reser_e/tariff_profiles_e.htm.

Bound and Applied Cotton Tariffs (most recent year available)

3.5. The series of tables below show, for each Member, scheduled bound cotton tariffs as reflected in the CTS database and the applied cotton tariffs as reported in the IDB database. The following column headings are used:

- BOUND DUTIES:** Bound duties presented according to the following column subheadings:
- Tariff line (HS year):** The tariff item number(s) as specified in the Member's schedule reproduced in the CTS file, using the HS nomenclature indicated in brackets;
- Designation:** The product description for the corresponding tariff heading, subheading or line, as specified in the Member's schedule reproduced in the CTS file (in original language only);
- Bound Duty:** The level of duty for the corresponding tariff line, as specified in the Member's schedule reproduced in the CTS file; and
- Other Duty and Charges:** The level of other duties and charges (and related information) for the corresponding tariff line, as and when specified in the Member's schedule reproduced in the CTS file.

- APPLIED DUTIES:** Applied duties (for the most recent year available as indicated in brackets), presented according to the following column subheadings:
- Tariff line (HS year):** The tariff item number(s) as specified in the Member's IDB file, using the HS nomenclature indicated in brackets;
- MFN:** The level of applied MFN duty for the corresponding tariff line, as specified in the Member's IDB file; and
- LDC Preferential:** The level of duty for the corresponding tariff line, as specified in the Member's IDB file, applied in the context of a preferential regime for LDC imports. The absence of data in the column reflects either the absence of such a regime for that Member or the absence of information on such a regime within the IDB.

Australia

Bound Duties				Applied Duties (Year 2013)		
Tariff Line (HS 2002)	Designation	Bound Duty	Other Duties and Charges	Tariff Line (HS 2012)	MFN	LDC Preferential
520100	Cotton, not carded or combed	0%		52010000	0%	0%
5202	Cotton waste (including yarn waste and garnetted stock):					
520210	-Yarn waste (including thread waste)	2%		52021000	0%	0%
52029	-Other:					
520291	--Garnetted stock	2%		52029100	0%	0%
520299	--Other	2%		52029900	0%	0%
520300	Cotton, carded or combed	0%		52030000	0%	0%

Bahrain, Kingdom of

Bound Duties				Applied Duties (Year 2013)		
Tariff Line (HS 2002)	Designation	Bound Duty	Other Duties and Charges	Tariff Line (HS 2012)	MFN	LDC Preferential
52010000	Cotton, not carded or combed.	35%		52010000	5%	
5202	Cotton waste (including yarn waste and garnetted stock).					
52021000	- Yarn waste (including thread waste)	35%		52021000	5%	
52029	- Other:					
52029100	- - Garnetted stock	35%		52029100	5%	

Bound Duties				Applied Duties (Year 2013)		
Tariff Line (HS 2002)	Designation	Bound Duty	Other Duties and Charges	Tariff Line (HS 2012)	MFN	LDC Preferential
52029900	-- Other	35%		52029900	5%	
52030000	Cotton, carded or combed.	35%		52030000	5%	

Bangladesh

Bound Duties				Applied Duties (Year 2011)		
Tariff Line (HS 1996)	Designation	Bound Duty	Other Duties and Charges	Tariff Line (HS 2007)	MFN	LDC Preferential
520100	Cotton, not carded or combed	200%		52010000	0%	
5202	Cotton waste (including yarn waste and garnetted stock).					
520210	- Yarn waste (including thread waste)	200%		52021000	5%	
52029	- Other :					
520291	-- Garnetted stock	200%		52029100	5%	
520299	-- Other	200%				
				52029910 ¹	0%	
				52029990 ²	5%	
520300	Cotton, carded or combed	200%		52030000	5%	

¹ Cotton waste.

² Cotton waste, nes.

Brazil

Bound Duties				Applied Duties (Year 2012)		
Tariff Line (HS 2002)	Designation	Bound Duty	Other Duties and Charges	Tariff Line (HS 2012)	MFN	LDC Preferential
520100	Algodón sin cardar ni peinar.					
52010010	Sin desmotar	55%		52010010	6%	
52010020	Simplemente desmotado	55%		52010020	10%	
52010090	Los demás	55%		52010090	10%	
5202	Desperdicios de algodón (incluidos los desperdicios de hilados y las hilachas)					
52021000	Desperdicios de hilados	55%		52021000	6%	
52029	- Los demás:					
52029100	Hilachas	55%		52029100	6%	
52029900	Los demás	55%		52029900	6%	
52030000	Algodón cardado o peinado	55%		52030000	8%	

Canada

Bound Duties (HS 2002)				Applied Duties (Year 2013)		
Tariff Line (HS 2002)	Designation	Bound Duty	Other Duties and Charges	Tariff Line (HS 2012)	MFN	LDC Preferential
52010000	Cotton, not carded or combed.	0%		52010000	0%	0%
5202	Cotton waste (including yarn waste and garnetted stock).					
52021000	- Yarn waste (including thread waste)	0%		52021000	0%	0%
52029	- Other:					
52029100	-- Garnetted stock	0%		52029100	0%	0%
52029900	-- Other	0%		52029900	0%	0%
520300	Cotton, carded or combed.			52030000	0%	0%

Bound Duties (HS 2002)				Applied Duties (Year 2013)		
Tariff Line (HS 2002)	Designation	Bound Duty	Other Duties and Charges	Tariff Line (HS 2012)	MFN	LDC Preferential
52030010	- - - Slivers	0%				
52030090	- - - Other	8%				

China

Bound Duties				Applied Duties (Year 2010)		
Tariff Line (HS 1996)	Designation	Bound Duty	Other Duties and Charges	Tariff Line (HS 2007)	MFN	LDC Preferential
5201	Cotton, not carded or combed.					
52010000	- Cotton, not carded or combed	40%		52010000	40%	40%
5202	Cotton waste (including yarn waste and garnetted stock).					
52021000	-Yarn waste (including thread waste)	10%		52021000	10%	10%
52029	- Other :					
52029100	--Garnetted stock	10%		52029100	10%	0%
52029900	--Other	10%		52029900	10%	10%
5203	Cotton, carded or combed.					
52030000	- Cotton, carded or combed	40%		52030000	40%	40%

Colombia

Bound Duties				Applied Duties (Year 2012)		
Tariff Line (HS 2002)	Designation	Bound Duty	Other Duties and Charges	Tariff Line (HS 2012)	MFN	LDC Preferential
5201000000	Algodón sin cardar ni peinar	99%				
				5201001000 ¹	5%	
				5201002000 ²	5%	
				5201003000 ³	5%	
				5201009000 ⁴	5%	
5202	Desperdicios de algodón (incluidos los desperdicios de hilados y las hilachas)					
5202100000	- Desperdicios de hilados	70%		5202100000	5%	
52029	- Los demás:					
5202910000	- - Hilachas	70%		5202910000	5%	
5202990000	- - Los demás	70%		5202990000	5%	
5203000000	Algodón cardado o peinado	70%		5203000000	5%	

¹ De longitud de fibra superior a 34.92 mm (1 3/8 pulgada).

² De longitud de fibra superior a 28.57 mm (1 1/8 pulgada) pero inferior o igual a 34.92 mm (1 3/8 pulgada).

³ De longitud de fibra superior a 22.22 mm (7/8 pulgada) pero inferior o igual a 28.57 mm (1 1/8 pulgada).

⁴ De longitud de fibra inferior o igual a 22.22 mm (7/8 pulgada).

Egypt

Bound Duties				Applied Duties (Year 2012)		
Tariff Line (HS 2002)	Designation	Bound Duty	Other Duties and Charges	Tariff Line (HS 2007)	MFN	LDC Preferential
52010000	Cotton, not carded or combed	5%		5201000010 ¹	0%	
				5201000030 ²	0%	
				5201000033 ³	0%	
				5201000034 ⁴	0%	
				5201000035 ⁵	0%	

Bound Duties				Applied Duties (Year 2012)		
Tariff Line (HS 2002)	Designation	Bound Duty	Other Duties and Charges	Tariff Line (HS 2007)	MFN	LDC Preferential
				5201000036 ⁶	0%	
				5201000037 ⁷	0%	
				5201000038 ⁸	0%	
				5201000039 ⁹	0%	
				5201000041 ¹⁰	0%	
				5201000042 ¹¹	0%	
				5201000043 ¹²	0%	
				5201000044 ¹³	0%	
				5201000045 ¹⁴	0%	
				5201000046 ¹⁵	0%	
				5201000047 ¹⁶	0%	
				5201000048 ¹⁷	0%	
				5201000050 ¹⁸	0%	
				5201000090 ¹⁹	0%	
5202	Cotton waste (including yarn waste and garnetted stock)					
52021000	- Yarn waste (including thread waste)	5%		5202100000	5%	
52029	- Other:					
52029100	-- Garnetted stock	5%		5202910000	5%	
52029900	-- Other	5%		5202990000	5%	
52030000	Cotton, carded or combed	5%		5203000000	5%	

¹ Raw cotton not mixed Giza 45 not carded or combed, not ginned.

² Raw cotton not mixed Giza 31 not carded or combed, not ginned.

³ Raw cotton not mixed Giza 66 not carded or combed, not ginned.

⁴ Raw cotton not mixed Giza 67 not carded or combed, not ginned.

⁵ Raw cotton not mixed Giza 68 not carded or combed, not ginned.

⁶ Raw cotton not mixed Giza 69 not carded or combed, not ginned.

⁷ Raw cotton not mixed Giza 83 not carded or combed, not ginned.

⁸ Raw cotton not mixed Giza 84 not carded or combed, not ginned.

⁹ Raw cotton not mixed Giza 85 not carded or combed, not ginned.

¹⁰ Raw cotton not mixed Giza 76 not carded or combed, not ginned.

¹¹ Raw cotton not mixed Giza 77 not carded or combed, not ginned.

¹² Raw cotton not mixed Giza 80 not carded or combed, not ginned.

¹³ Raw cotton not mixed Giza 81 not carded or combed, not ginned.

¹⁴ Raw cotton not mixed Giza 82 not carded or combed, not ginned.

¹⁵ Raw cotton not mixed Giza 70 not carded or combed, not ginned.

¹⁶ Raw cotton not mixed Giza 72 not carded or combed, not ginned.

¹⁷ Raw cotton not mixed Giza 75 not carded or combed, not ginned.

¹⁸ Other cotton not carded or combed, not ginned.

¹⁹ Other cotton not carded or combed ginned.

European Union

Bound Duties				Applied Duties (Year 2013)		
Tariff Line (HS 1996)	Designation	Bound Duty	Other Duties and Charges	Tariff Line (HS 2012)	MFN	LDC Preferential
5201	Cotton, not carded or combed:					
52010010	- Rendered absorbent or bleached	0%		52010010	0%	0%
52010090	- Other	0%		52010090	0%	0%
5202	Cotton waste (including yarn waste and garnetted stock):					
52021000	- Yarn waste (including thread waste)	0%		52021000	0%	0%
52029	- Other:					
52029100	-- Garnetted stock	0%		52029100	0%	0%
52029900	-- Other	0%		52029900	0%	0%
52030000	Cotton, carded or combed	0%		52030000	0%	0%

Hong Kong, China

Bound Duties				Applied Duties (Year 2013)		
Tariff Line (HS 2002)	Designation	Bound Duty	Other Duties and Charges	Tariff Line (HS 2012)	MFN	LDC Preferential
52010000	Cotton, not carded or combed.	0%		0%		
5202	Cotton waste (including yarn waste and garnetted stock).					
52021000	- Yarn waste (including thread waste)	0%		0%		
52029	- Other:					
52029100	- - Garnetted stock	0%		0%		
52029900	- - Other	0%		0%		
52030000	Cotton, carded or combed	0%		0%		

Iceland

Bound Duties				Applied Duties (Year 2012)		
Tariff Line (HS 1996)	Designation	Bound Duty	Other Duties and Charges	Tariff Line (HS 2012)	MFN	LDC Preferential
5201	Cotton, not carded or combed					
52010000	- Cotton, not carded or combed	0%		0%		
5202	Cotton waste (including yarn waste and garnetted stock)					
52021000	- Yarn waste (including thread waste)	11%		0%		
52029	- Other:					
52029100	- - Garnetted stock	0%		0%		
52029900	- - Other	0%		0%		
5203	Cotton, carded or combed					
52030000	- Cotton, carded or combed	0%		0%		

India

Bound Duties				Applied Duties (Year 2012)		
Tariff Line (HS 2002)	Designation	Bound Duty	Other Duties and Charges	Tariff Line (HS 2012)	MFN	LDC Preferential
52010000	Cotton, not carded or combed.	100%				
				52010011 ¹	0%	
				52010012 ²	0%	
				52010013 ³	0%	
				52010014 ⁴	0%	
				52010015 ⁵	0%	
				52010019 ⁶	0%	
				52010020 ⁷	0%	
5202	Cotton waste (including yarn waste and garnetted stock).					
52021000	- Yarn waste (including thread waste)	100%		52021000	0%	
52029	- Other:					
52029100	- - Garnetted stock	100%		52029100	0%	
52029900	- - Other	100%		52029900	0%	
52030000	Cotton, carded or combed.	150%		52030000	30%	

¹Bengal deshi.²Indian cotton of staple lengths 20.5 mm (25/32") and below (e.g. oomras, yellow picking, Assam Comillas).³Indian cotton of staple length exceeding 20.5mm (26/32") and but not exceeding 24.5mm (30/32").⁴Indian cotton of staple length over 24.5 mm (31/32") to 28 mm.⁵Indian cotton of staple length 28.5 mm (1 4/32") and above but below 34.5 mm.⁶Indian cotton of all staple length 34.5 mm and above (1 12/32").⁷Cotton, other than Indian, of all staple lengths.

Indonesia

Bound Duties				Applied Duties (Year 2013)		
Tariff Line (HS 1996)	Designation	Bound Duty	Other Duties and Charges	Tariff Line (HS 2012)	MFN	LDC Preferential
5201	Cotton, not carded or combed.					
520100000	- Cotton, not carded or combed.	27%		5201000000	0%	
5202	Cotton waste (including yarn waste and garnetted stock).					
520210000	- Yarn waste (including thread waste)	40%		5202100000	5%	
52029	- Other :					
520291000	-- Garnetted stock	40%		5202910000	5%	
520299000	-- Other	40%		5202990000	5%	
5203	Cotton, carded or combed.					
520300000	- Cotton, carded or combed.	40%		5203000000	5%	

Japan

Bound Duties				Applied Duties (Year 2012)		
Tariff Line (HS 2002)	Designation	Bound Duty	Other Duties and Charges	Tariff Line (HS 2012)	MFN	LDC Preferential
520100	- Cotton, not carded or combed	0%		5201000000	0%	0%
5202	Cotton waste (including yarn waste and garnetted stock).					
520210	- Yarn waste (including thread waste)	0%		5202100000	0%	0%
52029	- Other :					
520291	-- Garnetted stock	0%		5202910000	0%	0%
520299	-- Other	0%		5202990000	0%	0%
520300	- Cotton, carded or combed	0%		5203000000	0%	0%

Kenya

Bound Duties				Applied Duties (Year 2013)		
Tariff Line (HS 2002)	Designation	Bound Duty	Other Duties and Charges	Tariff Line (HS 2012)	MFN	LDC Preferential
52010000	Cotton, not carded or combed.	100%		5201000000	0%	
5202	Cotton waste (including yarn waste and garnetted stock).					
52021000	- Yarn waste (including thread waste)	100%		5202100000	0%	
52029	- Other:					
52029100	-- Garnetted stock	100%		5202910000	0%	
52029900	-- Other	100%		5202990000	0%	
52030000	Cotton, carded or combed.	100%		5203000000	0%	

Korea, Republic of

Bound Duties				Applied Duties (Year 2013)		
Tariff Line (HS 2002)	Designation	Bound Duty	Other Duties and Charges	Tariff Line (HS 2012)	MFN	LDC Preferential
520100	Cotton, not carded or combed.					
5201001000	- - -Seed cotton	2%		5201001000	0%	0%
52010090	- - - Other					
5201009010	- - - -Less than 232 mm (7/8 inch) of fibre-length	2%		5201009010	0%	0%

Bound Duties				Applied Duties (Year 2013)		
Tariff Line (HS 2002)	Designation	Bound Duty	Other Duties and Charges	Tariff Line (HS 2012)	MFN	LDC Preferential
5201009020	- - - - -Not less than 232 mm (7/8 inch), but less than 254 mm (1 inch) of fibre-length.	2%		5201009020	0%	0%
5201009030	- - - - -Not less than 254 mm (1 inch),but less than 285 mm (11/8 inch) of fibre-length.	2%		5201009030	0%	0%
5201009050	- - - - -Not less than 285 mm (1-1/8 inch), but less than 349 mm (1-3/8 inch) of fiber length.	2%		5201009050	0%	0%
5201009060	- - - - -Not less than 349 mm (1-3/8 inch) of fiber-length	2%		5201009060	0%	0%
5202	Cotton waste (including yarn waste and garnetted stock)					
5202100000	- - -1. Yarn waste (including thread waste)	2%		5202100000	0%	0%
52029	- 2. Other:					
5202910000	- - -A. Garnetted stock	2%		5202910000	0%	0%
5202990000	- - -B. Other	2%		5202990000	0%	0%
5203000000	- - -Cotton, carded or combed.	2%		5203000000	0%	0%

Malaysia

Bound Duties				Applied Duties (Year 2013)		
Tariff Line (HS 2002)	Designation	Bound Duty	Other Duties and Charges	Tariff Line (HS 2007)	MFN	LDC Preferential
520100000	Cotton, not carded or combed	0%		52010000	0%	
5202	Cotton waste (including yarn waste and garnetted stock)					
520210000	- Yarn waste (including thread waste)	5%		52021000	0%	
52029	- Other:					
520291000	- - Garnetted stock	5%		52029100	0%	
520299000	- - Other	5%		52029900	0%	
520300000	Cotton, carded or combed	5%		52030000	0%	

Mauritius

Bound Duties				Applied Duties (Year 2013)		
Tariff Line (HS 2002)	Designation	Bound Duty	Other Duties and Charges	Tariff Line (HS 2012)	MFN	LDC Preferential
52010000	Cotton, not carded or combed.	122%		52010000	0%	
5202	Cotton waste (including yarn waste and garnetted stock).					
52021000	- Yarn waste (including thread waste)	122%		52021000	0%	
52029	- Other:					
52029100	- - Garnetted stock	122%		52029100	0%	
52029900	- - Other	122%		52029900	0%	
52030000	Cotton, carded or combed.	122%		52030000	0%	

Mexico

Bound Duties				Applied Duties (Year 2012)		
Tariff Line (HS 2002)	Designation	Bound Duty	Other Duties and Charges	Tariff Line (HS 2007)	MFN	LDC Preferential
520100	Algodón sin cardar ni peinar.	45%				
				52010001 ¹	0%	

Bound Duties				Applied Duties (Year 2012)		
Tariff Line (HS 2002)	Designation	Bound Duty	Other Duties and Charges	Tariff Line (HS 2007)	MFN	LDC Preferential
				52010002 ²	0%	
				52010099 ³	0%	
5202	Desperdicios de algodón (incluidos los desperdicios de hilados y las hilachas)					
520210	Desperdicios de hilados	37%		52021001	0%	
52029	- Los demás:					
520291	Hilachas	37%		52029101	0%	
520299	-- Los demás					
52029901	Borra	37%		52029901	0%	
52029999	Demás	45%		52029999	0%	
520300	Algodón cardado o peinado.	37%		52030001	0%	

¹ Con pepita.

² Sin pepita, de fibra con más de 29 mm de longitud.

³ Los demás.

Morocco

Bound Duties				Applied Duties (Year 2012)		
Tariff Line (HS 2002)	Designation	Bound Duty	Other Duties and Charges	Tariff Line (HS 2002)	MFN	LDC Preferential
5201	Coton, non cardé ni peigné					
5201000010	- - - non égrené	19%		5201000010	2.5%	2.5%
5201000091	- - - égrené :					
5201000091	- - - - écru	19%		5201000091	2.5%	0%
5201000099	- - - - autres	19%		5201000099	2.5%	0%
5202	Déchets de coton (y compris les déchets de fils et les effilochés).					
520210	- Déchets de fils					
5202100010	- - - déchets de fils pour essuyages industriels	19%		5202100010	2.5%	2.5%
5202100090	- - - autres	19%		5202100090	2.5%	2.5%
52029	- Autres :					
5202910000	- - Effilochés	19%		5202910000	2.5%	2.5%
5202990000	- - Autres	19%		5202990000	2.5%	2.5%
5203	Coton, cardé ou peigné					
52030010	- - - écru, décréu ou blanchi:					
5203001010	- - - - écru	34%		5203001010	2.5%	2.5%
5203001020	- - - - décréu	34%		5203001020	2.5%	2.5%
5203001090	- - - - blanchi	34%		5203001090	2.5%	2.5%
5203009000	- - - autres	34%		5203009000	2.5%	2.5%

New Zealand

Bound Duties				Applied Duties (Year 2013)		
Tariff Line (HS 2002)	Designation	Bound Duty	Other Duties and Charges	Tariff Line (HS 2012)	MFN	LDC Preferential
52010000	Cotton, not carded or combed	0%		52010000	0%	0%
5202	Cotton waste (including yarn waste and garnetted stock):					
52021000	- Yarn waste (including thread waste)	0%		52021000	0%	0%
52029	- Other:					
52029100	-- Garnetted stock	0%		52029100	0%	0%
52029900	-- Other	0%		52029900	0%	0%
52030000	Cotton, carded or combed	0%		52030000	0%	0%

Norway

Bound Duties				Applied Duties (Year 2013)		
Tariff Line (HS 2002)	Designation	Bound Duty	Other Duties and Charges	Tariff Line (HS 2012)	MFN	LDC Preferential
5201000	Cotton, not carded or combed	0%		52010000	0%	0%
5202	Cotton waste (including yarn waste and garnetted stock).					
5202100	- Yarn waste (including thread waste)	0%		52021000	0%	0%
52029	- Other :					
5202910	-- Garnetted stock	0%		52029100	0%	0%
5202990	-- Other	0%		52029900	0%	0%
5203000	Cotton, carded or combed	0%		52030000	0%	0%

Pakistan

Bound Duties				Applied Duties (Year 2011)		
Tariff Line (HS 2002)	Designation	Bound Duty	Other Duties and Charges	Tariff Line (HS 2007)	MFN	LDC Preferential
520100	Cotton, not carded or combed.					
52010010	---American	5%		52010010	0%	
52010020	---Egyptian	5%		52010020	0%	
52010090	---Other	5%		52010090	0%	
5202	Cotton waste (including yarn waste and garnetted stock).					
52021000	- Yarn waste (including thread waste)	25%		52021000	10%	
52029	- Other:					
52029100	- - Garnetted stock	15%		52029100	10%	
52029900	- - Other	15%		52029900	10%	
52030000	Cotton, carded or combed.	5%		52030000	5%	

Peru

Bound Duties				Applied Duties (Year 2013)		
Tariff Line (HS 2002)	Designation	Bound Duty	Other Duties and Charges	Tariff Line (HS 2012)	MFN	LDC Preferential
5201000000	- - -Algodón sin cardar ni peinar.	30%				
				5201001000 ¹	6%	
				5201002000 ²	6%	
				5201003000 ³	6%	
				5201009000 ⁴	6%	
5202	Desperdicios de algodón (incluidos los desperdicios de hilados y las hilachas).					
5202100000	- Desperdicios de hilados	30%		5202100000	6%	
52029	- Los demás:					
5202910000	- - Hilachas	30%		5202910000	6%	
5202990000	- - Los demás	30%		5202990000	6%	
5203000000	- - -Algodón cardado o peinado.	30%		5203000000	6%	

¹ De longitud de fibra superior a 34.92 mm (1 3/8 pulgada).

² De longitud de fibra superior a 28.57 mm (1 1/8 pulgada) pero inferior o igual a 34.92 mm (1 3/8 pulgada).

³ De longitud de fibra superior a 22.22 mm (7/8 pulgada) pero inferior o igual a 28.57 mm (1 1/8 pulgada).

⁴ De longitud de fibra inferior o igual a 22.22 mm (7/8 pulgada).

Russian Federation

Bound Duties				Applied Duties (Year 2011)		
Tariff Line (HS 2007)	Designation	Bound Duty	Other Duties and Charges	Tariff Line (HS 2007)	MFN	LDC Preferential
520100	Cotton, not carded or combed:					
5201001000	- rendered absorbent or bleached	0%		5201001000	0%	
5201009000	- other	0%		5201009000	0%	
5202	Cotton waste (including yarn waste and garnetted stock):					
5202100000	- yarn waste (including thread waste)	0%		5202100000	0%	
52029	- other:					
5202910000	- - garnetted stock	0%		5202910000	0%	
5202990000	- - other	0%		5202990000	0%	
5203000000	Cotton, carded or combed.	0%		5203000000	0%	

South Africa

Bound Duties				Applied Duties (Year 2013)		
Tariff Line (HS 2002)	Designation	Bound Duty	Other Duties and Charges	Tariff Line (HS 2012)	MFN	LDC Preferential
520100	Cotton, not carded or combed.					
52010010	- - - Not ginned	60%	4.4c/kg cotton fibre (Normal levy)+3.3c/kg cotton fibre (Special levy)	52010010	0%	
52010020	- - - Ginned but not further processed	60%	4.4c/kg cotton fibre (Normal levy)+3.3c/kg cotton fibre (Special levy)	52010020	160c/kg ¹²	
52010090	- - - Other	60%	4.4c/kg cotton fibre (Normal levy)+3.3c/kg cotton fibre (Special levy)	52010090	15%	
5202	Cotton waste (including yarn waste and garnetted stock):					
520210	- Yarn waste (including thread waste)			52021000	0%	
52021010	- - - Unprocessed	60%				
52021090	- - - Other	60%				
52029	- Other:					
520291	- - Garnetted stock			52029100	0%	
52029110	- - - Unprocessed	60%				
52029190	- - - Other	60%				
520299	- - Other			52029900	0%	
52029910	- - - Unprocessed	60%				
52029990	- - - Other	60%				
52030000	Cotton, carded or combed.	60%		52030000	15%	

Switzerland

Bound Duties				Applied Duties (Year 2013)		
Tariff Line (HS 2002)	Designation	Bound Duty	Other Duties and Charges	Tariff Line (HS 2012)	MFN	LDC Preferential
520100	Coton, non cardé ni peigné.					
52010010	- - - blanchi et dégraissé (hydrophile)	0%		52010010	0%	0%
52010090	- - - autres	0%		52010090	0%	0%
5202	Déchets de coton (y compris les déchets de fils et les effilochés).					

¹² "c/kg" stands for rand cent per kilo.

Bound Duties				Applied Duties (Year 2013)		
Tariff Line (HS 2002)	Designation	Bound Duty	Other Duties and Charges	Tariff Line (HS 2012)	MFN	LDC Preferential
52021000	- déchets de fils	0%		52021000	0%	0%
52029	- Autres :					
52029100	- - effilochés	0%		52029100	0%	0%
52029900	- - autres	0%		52029900	0%	0%
52030000	- Coton, cardé ou peigné	0%		52030000	0%	0%

Chinese Taipei

Bound Duties				Applied Duties (Year 2013)		
Tariff Line (HS 2002)	Designation	Bound Duty	Other Duties and Charges	Tariff Line (HS 2007)	MFN	LDC Preferential
52010000	Cotton, not carded or combed	0%		52010000	0%	0%
5202	Cotton waste (including yarn waste and garnetted stock)					
52021000	Yarn waste (including thread waste)	0%		52021000	0%	0%
52029	Other:					
52029100	Garnetted cotton stock	0%		52029100	0%	0%
52029900	Other cotton waste	0%		52029900	0%	0%
52030000	Cotton, carded or combed	0%		52030000	0%	0%

Thailand

Bound Duties				Applied Duties (Year 2011)		
Tariff Line (HS 2002)	Designation	Bound Duty	Other Duties and Charges	Tariff Line (HS 2007)	MFN	LDC Preferential
520100	Cotton, not carded or combed.	4.5%		52010000	0%	
5202	Cotton waste (including yarn waste and garnetted stock).					
520210	- Yarn waste (including thread waste)	4.5%		52021000	0%	
52029	- Other:					
520291	- - Garnetted stock	4.5%		52029100	0%	
520299	- - Other	4.5%		52029900	0%	
520300	Cotton, carded or combed.	4.5%		52030000	0%	

Turkey

Bound Duties				Applied Duties (Year 2011)		
Tariff Line (HS 2002)	Designation	Bound Duty	Other Duties and Charges	Tariff Line (HS 2007)	MFN	LDC Preferential
520100	Cotton, not carded or combed.					
5201001000	- Rendered absorbent or bleached	6%	- Municipality share: 15% of customs duty, - Transportation infrastructure fee: 3% (in case of road, rail or air Transport) or 4% (in case of maritime transport) of the sum of CIF value, customs duty and other charges mentioned above.	5201001000	0%	0%
5201009000	- Other	6%	- Municipality share: 15% of customs duty, - Transportation infrastructure fee: 3% (in case of road, rail or air Transport) or 4% (in case of maritime transport) of the sum of CIF value, customs duty and other charges mentioned above.			
5202	Cotton waste (including yarn waste and garnetted stock).					

Bound Duties				Applied Duties (Year 2011)		
Tariff Line (HS 2002)	Designation	Bound Duty	Other Duties and Charges	Tariff Line (HS 2007)	MFN	LDC Preferential
5202100000	- Yarn waste (including thread waste)	12%	- Municipality share: 15% of customs duty, - Transportation infrastructure fee: 3% (in case of road, rail or air Transport) or 4% (in case of maritime transport) of the sum of CIF value, customs duty and other charges mentioned above.	5202100000	0%	0%
52029	- Other:					
5202910000	-- Garnetted stock	12%	- Municipality share: 15% of customs duty, - Transportation infrastructure fee: 3% (in case of road, rail or air Transport) or 4% (in case of maritime transport) of the sum of CIF value, customs duty and other charges mentioned above.	5202910000	0%	0%
5202990000	-- Other	12%	- Municipality share: 15% of customs duty, - Transportation infrastructure fee: 3% (in case of road, rail or air Transport) or 4% (in case of maritime transport) of the sum of CIF value, customs duty and other charges mentioned above.	5202990000	0%	0%
5203000000	Cotton, carded or combed	12.6%	- Municipality share: 15% of customs duty, - Transportation infrastructure fee: 3% (in case of road, rail or air Transport) or 4% (in case of maritime transport) of the sum of CIF value, customs duty and other charges mentioned above.	5203000000	0%	0%

United States of America

Bound Duties				Applied Duties (Year 2013)		
Tariff Line (HS 2002)	Designation	Bound Duty	Other Duties and Charges	Tariff Line (HS 2012)	MFN	LDC Preferential
520100	Cotton, not carded or combed:					
	-Having a staple length under 28.575 mm (1-1/8 inches):					
52010005	--Harsh or rough, having a staple length under 19.05 mm (3/4 inch)	0%		52010005	0%	0%
	--Other:					
52010012	---Described in general note 4 of the tariff schedule and entered pursuant to its provisions	0%		52010012	0%	0%
52010014 ¹	---Described in U.S. Tariff-Rate Quota Notifications, TRQID USA035	0%		52010014	0%	0%
52010018	---Other	31.4¢/kg		52010018	31.4¢/kg	31.4¢/kg
	-Having a staple length of 28.575 mm (1-1/8 inches) or more but under 34.925 mm (1-3/8 inches):					
52010022	--Described in general note 4 of the tariff schedule and entered pursuant to its provisions	4.4¢/kg		52010022	4.4¢/kg	0%
	--Other, harsh or rough, having a staple length of 29.36875 mm (1-5/32 inches) or more and white in color (except cotton of perished staple, grabbotts and cotton pickings):					
52010024 ¹	---Described in U.S. Tariff-Rate Quota Notifications, TRQID USA036	4.4¢/kg		52010024	4.4¢/kg	0%
52010028	---Other	31.4¢/kg		52010028	31.4¢/kg	31.4¢/kg
	--Other:					
52010034 ¹	---Described in U.S. Tariff-Rate Quota Notifications, TRQID USA037	4.4¢/kg		52010034	4.4¢/kg	0%

Bound Duties				Applied Duties (Year 2013)		
Tariff Line (HS 2002)	Designation	Bound Duty	Other Duties and Charges	Tariff Line (HS 2012)	MFN	LDC Preferential
52010038	---Other	31.4¢/kg		52010038	31.4¢/kg	31.4¢/kg
	-Having a staple length of 34.925 mm (1-3/8 inches) or more:					
52010055	--Described in general note 4 of the tariff schedule and entered pursuant to its provisions	1.5¢/kg		52010055	1.5¢/kg	1.5¢/kg
52010060 ¹	--Described in U.S. Tariff-Rate Quota Notifications, TRQID USA038	1.5¢/kg		52010060	1.5¢/kg	1.5¢/kg
52010080	--Other	31.4¢/kg		52010080	31.4¢/kg	31.4¢/kg
5202	Cotton waste (including yarn waste and garnetted stock):					
52021000	-Yarn waste (including thread waste)	0%		52021000	0%	0%
	-Other:					
52029100	--Garnetted stock			4.3%	4.3%	0%
5202910001	---Having a staple length under 28.575 mm (1-1/8 inches)	4.3%				
5202910002	---Having a staple length 28.575 mm (1-1/8 inches) or more	4.3%				
520299	--Other:					
	---Card strips made from cotton having a staple length under 30.1625 mm (1-3/16 inches) and lap waste, sliver waste and roving waste:					
52029905	----Described in general note 4 of the tariff schedule and entered pursuant to its provisions	0%		52029905	0%	0%
52029910 ¹	----Described in U.S. Tariff-Rate Quota Notifications, TRQID USA039	0%		52029910	0%	0%
52029930	----Other	7.8¢/kg		52029930	7.8¢/kg	7.8¢/kg
52029950	---Other	0%		52029950	0%	0%
520300	Cotton, carded or combed:					
	-Fibers of cotton processed but not spun:					
52030005	--Described in general note 4 of the tariff schedule and entered pursuant to its provisions	5%		52030005	5%	0%
52030010 ¹	--Described in U.S. Tariff-Rate Quota Notifications, TRQID USA040	5%		52030010	5%	0%
52030030	--Other	31.4¢/kg		52030030	31.4¢/kg	31.4¢/kg
52030050	-Other	4.3%		52030050	4.3%	0%

¹ Tariff rate quotas were reserved for these tariff lines.

² "¢/kg" stands for US\$ cent per kilo.

Viet Nam

Bound Duties				Applied Duties (Year 2012)		
Tariff Line (HS 2002)	Designation	Bound Duty	Other Duties and Charges	Tariff Line (HS 2012)	MFN	LDC Preferential
52010000	Cotton, not carded or combed.	0%		52010000	0%	
5202	Cotton waste (including yarn waste and garnetted stock).					
52021000	- Yarn waste (including thread waste)	20%		52021000	10%	
52029	- Other:					
52029100	- - Garnetted stock	20%		52029100	10%	
52029900	- - Other	20%		52029900	10%	
52030000	Cotton, carded or combed.	10%		52030000	0%	

3.2 SPECIAL SAFEGUARD PROVISIONS

3.6. This section provides information on scheduled special safeguard (SSG) provisions for cotton and on the use of those provisions by Member.

3.7. Of the 32 Members covered by this Market Access Part, three have scheduled SSG provisions for cotton, namely, Colombia, South Africa, and the United States of America.

3.8. The following table lists the cotton tariff lines for which SSG provisions are specified in each of those three Members' schedules. The following column headings are used:

Member The name of the Member who has reserved SSG provisions for cotton; and

Tariff Line The tariff item number for which the SSG provision was reserved (through the inclusion of the symbol "SSG") as specified in the Member's schedule reproduced in the CTS file using the HS 2002 nomenclature.

3.2.1 Scheduled SSG provisions for cotton

Member	Tariff Line
Colombia	5201000000
South Africa	52010010
	52010020
	52010090
	52021010
	52021090
	52029110
	52029190
	52029910
	52029990
	52030000
United States of America	52010018
	52010028
	52010038
	52010080
	52029930
	52030030

3.9. Based on Table MA:3 notifications circulated by the Secretariat up to 30 April 2014, none of those three Members has notified trigger levels for the volume-based SSG concerning cotton.

3.10. Regarding the price-based SSG, based on Table MA:4 notifications circulated by the Secretariat up to 30 April 2014, the United States of America have notified trigger prices for all the tariff lines for which SSG provisions were reserved. These trigger prices are presented by tariff item number in the table below. The following column headings are used:

Tariff Line The tariff item number for which the SSG provision was reserved (through the inclusion of the symbol "SSG") as specified in the Member's schedule reproduced in the CTS using the HS 2002 nomenclature;

Trigger Price The trigger price for the tariff item number as notified in the Table MA:4 notification.

3.2.2 Notified trigger prices for cotton

United States of America (G/AG/N/USA/1)

Tariff Line	Trigger price
52010018	US\$1.60/kg.
52010028	US\$1.12/kg.
52010038	US\$1.20/kg.
52010080	US\$2.75/kg.
52029930	US\$8.15/kg.
52030030	US\$0.64/kg.

3.11. The table below provides, based on MA:5 notifications circulated by the Secretariat up to 30 April 2014, information regarding price-based SSG actions invoked on cotton by the United States of America. The following column headings are used:

Product	Product description as specified in the Table MA:5 notification;
Tariff Line	The tariff item number for which the SSG provision was reserved (through the inclusion of the symbol "SSG") as specified in the Member's schedule reproduced in the CTS using the HS 2002 nomenclature;
Implementation year	The implementation year during which SSG action was invoked;
Affected quantity (kg.)	The quantity in kilograms of the tariff item number affected by the SSG action as notified in the Table MA:5 notification; and
Notification reference	The reference of the relevant notification.

3.2.3 Invoked price-based SSG for cotton

United States of America (Table MA:5)

Product	Tariff Line	Implementation year	Affected quantity (kg.)	Notification Reference
Short staple cotton, over-quota	52010018	Calendar year, 1996	150	G/AG/N/USA/24
Short staple cotton, over-quota	52010018	Calendar year, 2006	54	G/AG/N/USA/61
Extra long staple cotton, over-quota	52010080	Calendar year, 2003	118,807	G/AG/N/USA/61
Extra long staple cotton, over-quota	52010080	Calendar year, 2007	539	G/AG/N/USA/67

Note:

The following paragraph is quoted in all of the above-mentioned U.S. notifications: "United States price-based safeguards are invoked automatically on a shipment-by-shipment basis. Importers who enter goods in an over-quota tariff line are required to declare which pre-established price range is applicable to their product. If there is a safeguard duty associated with that price range, the additional charge is assessed. Entries where the safeguard duties were assessed during the reporting period are summarized in this notification. Information on affected quantities, while not required by the format, is provided for illustrative purposes. Multiple transactions involving the same product have been aggregated for the purposes of this notification."

3.3 TARIFF RATE QUOTAS

3.12. Of the 32 Members covered by the Market Access Part of this background paper, only China, Colombia, South Africa and the United States of America have scheduled tariff rate quotas¹³ for cotton.

3.13. This section is organized as follows: Sub-section 3.3.1 provides information regarding the tariff rate quota commitments for cotton as specified in those four Members' schedules; Sub-section 3.3.2 presents the most recent TRQ administration methods notified by those four Members in Table MA:1 notifications; and Sub-section 3.3.3 provides, for each of those four Members, the notified TRQ quantities and the in-quota imports from Table MA:2 notifications.

3.3.1 Tariff rate quota commitments for cotton

3.14. This sub-section lists, by Member, the initial and final bound tariff rate quota quantities and in-quota tariff rates for cotton as specified in the Member's schedule. The following column headings are used:

TQID	The number identifying the bound tariff quota for each Member in the CTS, in the same sequential order as scheduled. The seven-character code is comprised of the three-letter WTO Member code, followed by "Q" for "TRQ", and by the three-digit sequential identifier.
Product	The product or group of products as specified in the Member's schedule; ¹⁴
Tariff Line(s)	The tariff item number(s) as specified in the Member's schedule reproduced in the CTS using the HS 2002 nomenclature;
Unit	The unit for initial and final bound tariff rate quota quantities;
Initial quota	The initial bound tariff rate quota quantity as specified in the Member's schedule;
Final quota	The final bound tariff rate quota quantity as specified in the Member's schedule; and
In-quota tariff rate	The in-quota tariff rate as specified in the Member's schedule.

China¹

TQID	Product	Tariff line(s)	Unit	Initial quota	Final quota	In-quota tariff rate
CHNQ010	Cotton ²	52010000, 52030000	Metric tonnes	780,750	894,000	1%

¹ Annex 1 contains the notes from China's schedule concerning tariff rate quota commitments.

² The following information is taken from the column "other terms and conditions" in China's schedule for its cotton TRQ commitment (Refer to Annex 1, "Note 1")

1) STE share = 33% (See Note 1)

2) Staging for cotton

Year	TRQ quantity
2002	818,500 mt
2003	856,250 mt
2004	894,000 mt

Colombia

TQID	Product	Tariff line(s)	Unit	Initial quota	Final quota	In-quota tariff rate
COLQ057	ALGODON SIN CARDAR NI PEINAR	5201	Metric tonnes	222	222	99%
COLQ067	ALGODON	5201	Metric tonnes	1510	2664	80%

¹³ Also referred to as TRQ or tariff quota.

¹⁴ In original language only.

South Africa³

TQID	Product	Tariff line(s)	Unit	Initial quota	Final quota
ZAFQ053	Cotton	5201	Metric tonnes	17,101	17,101

³ The following note is included in South Africa's schedule for its TRQ commitments: "South Africa commits itself to fill the quotas as indicated at tariff rates at a maximum of 20% of the bound rates for both the initial and final quantities."

United States of America⁴

TQID	Product	Tariff line(s)	Unit	Initial quota	Final quota
USAQ048		52010014, 52010024, 52010034, 52010060, 52029910, 52030010	Metric tonnes	10,000	10,000
USAQ049		52010014	Metric tonnes	8,495	20,207
USAQ050		52010024	Metric tonnes	900	1,400
USAQ051		52010034	Metric tonnes	5,200	11,500
USAQ052		52010060	Metric tonnes	25,500	40,100
USAQ053		52029910	Kilograms	1,835,427	3,335,427
USAQ054		52030010	Kilograms	1,000	2,500

⁴ Annex 2 contains the chapter notes from the U.S. schedule concerning TRQ commitments for cotton.

3.3.2 Most recent Tariff Rate Quota administration method notified for cotton

3.15. This sub-section describes, for each Member and for each cotton TRQ, the most recent import arrangements notified in Table MA:1 notifications up to 30 April 2014.

3.16. The reference number of the relevant notification is indicated in the title for each Member, with the reporting period covered by the notification specified in brackets.

China**G/AG/N/CHN/2 (calendar year 2003)****CHNQ010****Description of import arrangement applicable**

- (a) (i) Import tariff quota of agricultural products shall be applicable to global trade.
(ii) The tariff quota for the year 2003 is open from the date of issuance to 31 December.
- (b) (i) The former State Development Planning Commission was responsible for tariff quota allocation of agricultural products. National Development Reform Commission and Ministry of Commerce are responsible for reallocations.
(ii) Requirements and conditions for applicants applying for import tariff quota are: having registered with Administration of Industry and Commerce (presenting the duplicate of business licences) prior to 1 October 2002; being under sound financial conditions and having good tax payment records (presenting relevant data for 2001 and 2002); having no records of unlawful acts at the Customs, Administration of Industry and Commerce, Inspection and Quarantine authorities and Taxation Administration within the period of 2000-2002; having passed the annual enterprise review of the year 2001 conducted by Administration of Industry and Commerce and Inspection and Quarantine authorities.
(iii) Import tariff quota for general trade shall be allocated with reference to the volumes for which applicants have applied, previous import performance and production capacity or other applicable commercial standards, or under the principle of "first-come, first-served".
(iv) Licence shall remain valid from the date of issuance to 31 December of the same year.

Colombia**G/AG/N/COL/35 (calendar year 2005)****COLQ067****Description of import arrangement applicable**

- (a) Allocation of quotas to supplying countries: none.
- (b) Allocation of licences or of access to quotas to importers: the import quota is allocated on a competitive basis amongst participants registered with the Ministry of Agriculture and Rural Development. Quota allocation is by means of public auctions in which importers take part through the bid registration system.
- (c) Details of other arrangements: not applicable.
- (d) Any other information: Decree No. 430 of 2004 of the Ministry of Agriculture and Rural Development

South Africa**G/AG/N/ZAF/35 (calendar year 2001)****ZAFQ053****Description of import arrangement applicable**

- (a) Country Allocations: Global
- (b) Import Allocations:
 - (i) Department of Agriculture will allocate and issue permits annually;
 - (ii) historical and new importers who are processors of cotton will be eligible for permits;
 - (iii) permits will be issued pro rata;
 - (iv) permits will be valid for twelve months.

United States of America¹⁵**G/AG/N/USA/2/Add.3 and G/AG/N/USA/34/Add.1 (calendar year)****USAQ049****Description of import arrangement applicable**

- (a) COUNTRY ALLOCATIONS: See Additional U.S. Note 5 to Chapter 52 of the HTSUS (Annex 1, 36/).
- (b) IMPORTER ALLOCATIONS: First-come, first-served, implemented by U.S. Customs Service (<http://www.customs.gov/impoexpo/impoexpo.htm>).
- (c) OTHER ARRANGEMENTS: None.
- (d) OTHER INFORMATION: This provision is included in Additional U.S. Note 5 to chapter 52 of the HTSUS (Annex 1, note 36/) and in Additional U.S. Note 6 to Chapter 52 of Schedule XX.

USAQ050**Description of import arrangement applicable**

- (a) COUNTRY ALLOCATIONS: None.
- (b) IMPORTER ALLOCATIONS: First-come, first-served, implemented by U.S. Customs Service (<http://www.customs.gov/impoexpo/impoexpo.htm>).
- (c) OTHER ARRANGEMENTS: None.
- (d) OTHER INFORMATION: This provision is included in Additional U.S. Note 6 to chapter 52 of the HTSUS (Annex 1, note 37/) and in Additional U.S. Note 7 to Chapter 52 of Schedule XX.

¹⁵ Annex 3 contains the excerpt of notes from the harmonized tariff system of the United States of America that concern cotton (from Annex 1 in G/AG/N/USA/2/Add.3 and G/AG/N/USA/34/Add.1).

USAQ051**Description of import arrangement applicable**

- (a) COUNTRY ALLOCATIONS: None.
- (b) IMPORTER ALLOCATIONS: First-come, first-served, implemented by U.S. Customs Service (<http://www.customs.gov/impoexpo/impoexpo.htm>).
- (c) OTHER ARRANGEMENTS: None.
- (d) OTHER INFORMATION: This provision is included in Additional U.S. Note 7 to chapter 52 of the HTSUS (Annex 1, note 38/) and in Additional U.S. Note 8 to Chapter 52 of Schedule XX.

USAQ052**Description of import arrangement applicable**

- (a) COUNTRY ALLOCATIONS: None.
- (b) IMPORTER ALLOCATIONS: First-come, first-served, implemented by U.S. Customs Service (<http://www.customs.gov/impoexpo/impoexpo.htm>).
- (c) OTHER ARRANGEMENTS: None.
- (d) OTHER INFORMATION: This provision is included in Additional U.S. Note 8 to chapter 52 of the HTSUS (Annex 1, note 39/) and in Additional U.S. Note 9 to Chapter 52 of Schedule XX.

USAQ053**Description of import arrangement applicable**

- (a) COUNTRY ALLOCATIONS: See Additional U.S. Note 9 to Chapter 52 of the HTSUS (Annex 1, 40/).
- (b) IMPORTER ALLOCATIONS: First-come, first-served, implemented by U.S. Customs Service (<http://www.customs.gov/impoexpo/impoexpo.htm>).
- (c) OTHER ARRANGEMENTS: None.
- (d) OTHER INFORMATION: This provision is included in Additional U.S. Note 9 to chapter 52 of the HTSUS (Annex 1, note 40/) and in Additional U.S. Note 10 to Chapter 52 of Schedule XX.

USAQ054**Description of import arrangement applicable**

- (a) COUNTRY ALLOCATIONS: See Additional U.S. Note 10 to Chapter 52 of the HTSUS (Annex 1, 41/).
- (b) IMPORTER ALLOCATIONS: First-come, first-served, implemented by U.S. Customs Service (<http://www.customs.gov/impoexpo/impoexpo.htm>).
- (c) OTHER ARRANGEMENTS: None.
- (d) OTHER INFORMATION: This provision is included in Additional U.S. Note 10 to chapter 52 of the HTSUS (Annex 1, note 41/) and in Additional U.S. Note 11 to Chapter 52 of Schedule XX.

3.3.3 TRQ quantities and in-quota imports for cotton

3.17. This sub-section provides yearly notified TRQ quantities and in-quota imports for cotton, based on Members' Table MA:2 notifications circulated by the Secretariat up to 30 April 2014.

3.18. The implementation years covered in the tables below are those indicated in the Member's Table MA:2 notifications. The title of the individual tables indicates the TQID of the TRQ, while the quantity unit used in the notification is indicated in brackets.

China

CHNQ010 (metric tonnes)

	2002	2003	2004	2005	2006	2007	2008	2009	2010	2011	2012
Notified TRQ Quantity	818,500	856,250	894,000	894,000	894,000	894,000	894,000	894,000	894,000	894,000	894,000
In-quota Imports	177,000	870,000	1,910,000	2,570,000	894,000	1,165,000	2,111,000	894,000	894,000	894,000	894,000

Colombia

COLQ067 (metric tonnes)

	1995	1996	1997	1998	1999	2000	2001	2002	2003	2004	2005	2006	2007	2008	2009	2010
Notified TRQ Quantity	1,510	1,847	1,963	2,117	2,245	2,373	2,501	2,630	2,758	2,886	2,886	2,886	2,886	2,886	2,886	2,886
In-quota Imports	37,747	25,676	47,284	42,661	37,846	58,636	53,583	64,345	64,556	33,490	39,525	61,904	53,307	50,563	60,328	50,315

South Africa

ZAFQ053 (metric tonnes)

	1995	1996	1997	1998	1999	2000	2001	2002	2003	2004	2005	2006	2007	2008	2009	2010
Notified TRQ Quantity	17,101	17,101	17,101	17,101	17,101	17,101	17,101	17,101	17,101	17,101	17,101	17,101	17,101	17,101	17,101	17,101
In-quota Imports	44,114	17,101	17,101	17,101	17,101	17,101	17,101	17,101	17,101	17,101	17,101	17,101	17,101	17,101	17,101	17,101

United States of America¹

USAQ049 (metric tonnes)

	1995	1996	1997	1998	1999	2000	2001	2002	2003	2004	2005	2006	2007	2008	2009	2010	2011	2012
Notified TRQ Quantity		8,495	10,837	13,180	15,522	17,865	20,207	20,207	20,207	20,207	20,207	20,207	20,207	20,207	20,207	20,207	20,207	20,207
In-quota Imports		198	1	45	12,098	452	229	351	0	45	2	259	1,346	73	0	0	0	3,969

USAQ050 (metric tonnes)

	1995	1996	1997	1998	1999	2000	2001	2002	2003	2004	2005	2006	2007	2008	2009	2010	2011	2012
Notified TRQ Quantity		900	1,000	1,100	1,200	1,300	1,400	1,400	1,400	1,400	1,400	1,400	1,400	1,400	1,400	1,400	1,400	1,400
In-quota Imports		0	0	0	0	0	0	0	0	0	0	0	0	0	0	0	0	0

USAQ051 (metric tonnes)

	1995	1996	1997	1998	1999	2000	2001	2002	2003	2004	2005	2006	2007	2008	2009	2010	2011	2012
Notified TRQ Quantity		5,200	6,460	7,720	8,980	10,240	11,500	11,500	11,500	11,500	11,500	11,500	11,500	11,500	11,500	11,500	11,500	11,500
In-quota Imports		0	0	23	1,471	190	116	855	195	1,525	2,608	1,294	235	123	0	0	545	117

USAQ052 (metric tonnes)

	1995	1996	1997	1998	1999	2000	2001	2002	2003	2004	2005	2006	2007	2008	2009	2010	2011	2012
Notified TRQ Quantity		25,500	28,420	31,340	34,260	37,180	40,100	40,100	40,100	40,100	40,100	40,100	40,100	40,100	40,100	40,100	40,100	40,100
In-quota Imports		0	13	62	3,483	9,611	2,657	5,089	13,813	9,270	4,244	3,934	2,423	2,418	0	0	1,518	1,214

USAQ053 (kilograms)

	1995	1996	1997	1998	1999	2000	2001	2002	2003	2004	2005	2006	2007	2008	2009	2010	2011	2012
Notified TRQ Quantity		1,835,427	2,135,427	2,435,427	2,735,427	3,035,427	3,335,427	3,335,427	3,335,427	3,335,427	3,335,427	3,335,427	3,335,427	3,335,427	3,335,427	3,335,427	3,335,427	3,335,427
In-quota Imports		15,000	17,584	0	0	0	0	0	0	128,198	0	0	169,844	791,441	87,332	561,492	729,436	558,590

USAQ054 (kilograms)

	1995	1996	1997	1998	1999	2000	2001	2002	2003	2004	2005	2006	2007	2008	2009	2010	2011	2012
Notified TRQ Quantity		1,000	1,300	1,600	1,900	2,200	2,500	2,500	2,500	2,500	2,500	2,500	2,500	2,500	2,500	2,500	2,500	2,500
In-quota Imports		800	120	0	1,796	1,307	2,500	2,500	2,500	2,300	157	0	0	0	2,500	0	20	0

¹ According to the U.S. notification for implementation year 1995, Uruguay Round commitments for cotton products in headings 5201, 5202 and 5203 became effective only in the fall of 1995, and imports under these commitments were reported along with calendar year 1996 imports in early 1997.

3.4 OTHER NON TARIFF MEASURES

3.19. This section contains information on other non-tariff measures applicable to cotton. The information presented is sourced from the WTO I-TIP Goods database¹⁶, which compiles data about non-tariff measures notified by Members as well as information on "specific trade concerns" raised by Members during WTO Committee meetings.

3.20. The non-tariff measures listed below result from a 30 April 2014 query in the I-TIP Goods database using the following criteria:

- a. Member imposing the measure: The 32 Members selected for this Market Access part;
- b. Type of measure covered: Sanitary and Phytosanitary measures (as notified under the Agreement on Sanitary and Phytosanitary measures); measures notified under the Agreement on Technical Barriers to Trade; Anti-Dumping measures (as notified under the Anti-Dumping agreement); Countervailing duties (as notified under the Agreement on Subsidies and Countervailing Measures); Safeguard measures (as notified under the Agreement on Safeguards); State Trading Enterprises (as notified to the Working Party on State Trading Enterprises, pursuant to Article XVII:4(a) of the GATT 1994 and Paragraph 1 of the Understanding on the interpretation of Article XVII); and Quantitative restrictions notified to the Committee on Market Access as per the CTG Decision contained in G/L/59/Rev.1;
- c. Measures initiated or notified from 1 January 2012 and which have not been withdrawn to date; and
- d. Measures with a reference to "cotton" and with a product description encompassing explicitly or potentially HS headings 52.01, 52.02 or 52.03.

3.21. It should be noted that, to date, no specific trade concern has been raised in the relevant WTO Committees with respect to the non-tariff measures identified in this Section and listed in the table below.

3.22. The following column headings are used for the tables below:

Member	Member notifying the measure;
Partner affected	Member(s) affected by the measure if identified in the relevant notification, or otherwise "All Members";
Notif. req.	Type of measure notified, using the following coding: "SPS" for Sanitary and Phytosanitary measures; "TBT" for measures notified under the Agreement on Technical Barriers to Trade; "AD" for Anti-Dumping measures; "CV" for countervailing duties; "SG" for Safeguard measures; "STE" for State Trading Enterprises; and "QR" for Quantitative Restrictions;
Initiation/notification	Date of initiation or notification of the measure;
In force	Date of entry into force of the measure (if any) as it appears in the relevant notification;
Measure description	Description of the measure as it appears in the relevant notification;
Product description	Description of the product covered by the measure as it appears in the relevant notification;
Source	Document number of the relevant notification(s).

¹⁶ <http://i-tip.wto.org/goods/default.aspx?language=en>.

Member	Partner affected	Notif. req.	Initiation/ notification	In force	Measure description	Product description	Source
Brazil	All Members	SPS	11-Apr-14		<p>Draft resolution regarding the active ingredient DIFENCONAZOLE of the monograph list of active ingredients for pesticides, household cleaning products and wood preservers, published by Resolution - RE n° 165 of 29 August 2003, Brazilian Official Gazette (DOU Diário Oficial da União) of 2 September 2003. Inclusion of the culture of corn (MRL 0.01mg/kg and safety security period of 30 days) to the active ingredient DIFENCONAZOLE of the monograph list of active ingredients for pesticides, household cleaning products and wood preservers. Draft resolution regarding the active ingredient DIFENCONAZOLE of the monograph list of active ingredients for pesticides, household cleaning products and wood preservers (inclusion of the culture of corn MRL 0.01mg/kg and safety security period of 30 days, to this active ingredient), including foliar application in cultures of avocado (0.3mg/kg safety security period of 14 days), zucchini (0.06mg/kg safety security period of 3 days), poplar (non-food use), lettuce (0.5mg/kg safety security period of 14 days), cotton (0.3mg/kg safety security period of 21 days), garlic (0.02mg/kg safety security period of 22 days), rice (1.0mg/kg safety security period of 45 days), banana (0.5mg/kg safety security period of 7 days), potato (0.1mg/kg safety security period of 7 days), eggplant (0.05mg/kg safety security period of 3 days), beet (0.1mg/kg safety security period of 3 days), coffee (0.5mg/kg safety security period of 30 days), coffee (seedling) (MRL and safety period not determined due to the mode of use), onion (0.1mg/kg safety security period of 7 days), carrot (0.2mg/kg safety security period of 15 days), citrus (0.5mg/kg safety security period of 14 days), cauliflower (1.0mg/kg safety security period of 14 days), pea (0.5mg/kg safety security period of 14 days), bean (0.5mg/kg safety security period of 25 days), sunflower (0.04mg/kg safety security period of 14 days), guava (0.2mg/kg safety security period of 2 days), apple (0.5mg/kg safety security period of 5 days), papaya (0.3mg/kg safety security period of 3 days), mango (0.2mg/kg safety security period of 7 days), passion fruit (0.05mg/kg safety security period of 14 days), watermelon (0.05mg/kg safety security period of 3 days), melon (0.05mg/kg safety security period of 3 days), corn (0.01mg/kg safety security period of 30 days), strawberry (0.5mg/kg safety security period of 1 day), cucumber (0.02mg/kg safety security period of 1 day), peach (2.0mg/kg safety security period of 10 days), pepper (0.5mg/kg safety security period of 3 days), rose (non-food use), soy (0.05mg/kg safety security period of 30 days), tomato (0.1mg/kg safety security period of 3 days), grape (0.2mg/kg safety security period of 21 days). Seeds application in cultures of cotton (0.3mg/kg safety security period not determined due to the mode of use), peanut (0.1mg/kg safety security period not</p>	<p>Foliar application in cultures of avocado (0.3mg/kg safety security period of 14 days), zucchini (0.06mg/kg safety security period of 3 days), poplar (non-food use), lettuce (0.5mg/kg safety security period of 14 days), cotton (0.3mg/kg safety security period of 21 days), garlic (0.02mg/kg safety security period of 14 days), peanut (0.1mg/kg safety security period of 22 days), rice (1.0mg/kg safety security period of 45 days), banana (0.5mg/kg safety security period of 7 days), potato (0.1mg/kg safety security period of 7 days), eggplant (0.05mg/kg safety security period of 3 days), beet (0.1mg/kg safety security period of 3 days), coffee (0.5mg/kg safety security period of 30 days), coffee (seedling) (MRL and safety period not determined due to the mode of use), onion (0.1mg/kg safety security period of 7 days), carrot (0.2mg/kg safety security period of 15 days), citrus (0.5mg/kg safety security period of 7 days), coconut (0.1mg/kg safety security period of 14 days), cauliflower (1.0mg/kg safety security period of 14 days), pea (0.5mg/kg safety security period of 14 days), bean (0.5mg/kg safety security period of 25 days), sunflower (0.04mg/kg safety security period of 14 days), guava (0.2mg/kg safety security period of 2 days), apple (0.5mg/kg safety security period of 5 days), papaya (0.3mg/kg safety security period of 3 days), mango (0.2mg/kg safety security period of 7 days), passion fruit (0.05mg/kg safety security period of 14 days), watermelon (0.05mg/kg safety security period of 3 days), melon (0.05mg/kg safety security period of 3 days), corn (0.01mg/kg safety security period of 30 days), strawberry (0.5mg/kg safety security period of 1 day), cucumber (0.02mg/kg safety security period of 1 day), peach (2.0mg/kg safety security period of 10 days), pepper (0.5mg/kg safety security period of 3 days), rose (non-food use), soy (0.05mg/kg safety security period of 30 days), tomato (0.1mg/kg safety security period of 3 days), grape (0.2mg/kg safety security period of 21 days). Seeds application in cultures of cotton (0.3mg/kg safety security period not determined due to the mode of use), peanut (0.1mg/kg safety security period not determined due to the mode of use), barley (0.05mg/kg safety security period not determined due to the mode of use), bean (0.5mg/kg safety security period not determined due to the mode of use), soy (0.05mg/kg safety security period not determined due to the mode of use), wheat (0.05mg/kg safety security period not determined due to the mode of use).</p>	G/SPS/N/BRA/933

Member	Partner affected	Notif. req.	Initiation/ notification	In force	Measure description	Product description	Source
					determined due to the mode of use), barley (0.05mg/kg safety security period not determined due to the mode of use), bean (0.5mg/kg safety security period not determined due to the mode of use), soy (0.05mg/kg safety security period not determined due to the mode of use), wheat (0.05mg/kg safety security period not determined due to the mode of use).		
Brazil	All Members	SPS	08-Apr-14		Draft resolution regarding the active ingredient PYRACLOSTROBIN to be included in the monograph list of active ingredients for pesticides, household cleaning products and wood preservers, published by Resolution - RE n° 165 of 29 August 2003, Brazilian Official Gazette (DOU Diário Oficial da União) of 2 September 2003 Draft Resolution regarding the active ingredient PYRACLOSTROBIN to be included in the monograph list of active ingredients of pesticides, household cleaning products and wood preservers, including the use in foliar application in cultures of cotton (0.2mg/kg safety security period of 7 days), garlic (0.1mg/kg safety security period of 7 days), peanut (0.1mg/kg safety security period of 14 days), oat (1.0mg/kg safety security period of 30 days), banana (0.5mg/kg safety security period of 3 days), potato (0.01mg/kg safety security period of 3 days), coffee (0.5mg/kg safety security period of 45 days), sugarcane (0.1mg/kg safety security period of 30 days), onion (0.5mg/kg safety security period of 7 days), carrot (0.2mg/kg safety security period of 7 days), barley (1.0mg/kg safety security period of 30 days), citrus (0.5mg/kg safety security period of 14 days), chrysanthemum (non-food use), eucalyptus (non-food use), bean (0.1mg/kg safety security period of 14 days), apple (2.0mg/kg safety security period of 14 days), papaya (0.1mg/kg safety security period of 7 days), mango (0.1mg/kg safety security period of 7 days), watermelon (0.1mg/kg safety security period of 7 days), melon (0.1mg/kg safety security period of 7 days), corn (0.1mg/kg safety security period of 45 days), cucumber (0.05mg/kg safety security period of 7 days), pepper (1.0mg/kg safety security period of 3 days), rose (non-food use), soy (0.1mg/kg safety security period of 14 days), tomato (0.2mg/kg safety security period of 1 day), wheat (0.5mg/kg safety security period of 30 days), grape (2.0mg/kg safety security period of 7 days). Seeds application in cultures of cotton (0.2mg/kg safety security period not determined due to the mode of use), peanut (0.1mg/kg safety security period not determined due to the mode of use), rice (0.02mg/kg safety security period not determined due to the mode of use), barley (1.0mg/kg safety security period not determined due to the mode of use), bean (0.1mg/kg safety security period not determined due to the mode of use), corn (0.1mg/kg safety security period not determined due to the mode of use), soy (0.1mg/kg safety security period not determined due to the mode of use), sorgho (0.02mg/kg safety security period not determined due to the mode of use), wheat (0.5mg/kg safety security period not determined due to the mode of use).	Foliar application in cultures of cotton (0.2mg/kg safety security period of 7 days), garlic (0.1mg/kg safety security period of 7 days), peanut (0.1mg/kg safety security period of 14 days), oat (1.0mg/kg safety security period of 30 days), banana (0.5mg/kg safety security period of 3 days), potato (0.01mg/kg safety security period of 3 days), coffee (0.5mg/kg safety security period of 45 days), sugarcane (0.1mg/kg safety security period of 30 days), onion (0.5mg/kg safety security period of 7 days), carrot (0.2mg/kg safety security period of 7 days), barley (1.0mg/kg safety security period of 30 days), citrus (0.5mg/kg safety security period of 14 days), chrysanthemum (non-food use), eucalyptus (non-food use), bean (0.1mg/kg safety security period of 14 days), apple (2.0mg/kg safety security period of 14 days), papaya (0.1mg/kg safety security period of 7 days), mango (0.1mg/kg safety security period of 7 days), watermelon (0.1mg/kg safety security period of 7 days), melon (0.1mg/kg safety security period of 7 days), corn (0.1mg/kg safety security period of 45 days), cucumber (0.05mg/kg safety security period of 7 days), pepper (1.0mg/kg safety security period of 3 days), rose (non-food use), soy (0.1mg/kg safety security period of 14 days), tomato (0.2mg/kg safety security period of 1 day), wheat (0.5mg/kg safety security period of 30 days), grape (2.0mg/kg safety security period of 7 days). Seeds application in cultures of cotton (0.2mg/kg safety security period not determined due to the mode of use), peanut (0.1mg/kg safety security period not determined due to the mode of use), rice (0.02mg/kg safety security period not determined due to the mode of use), barley (1.0mg/kg safety security period not determined due to the mode of use), bean (0.1mg/kg safety security period not determined due to the mode of use), corn (0.1mg/kg safety security period not determined due to the mode of use), soy (0.1mg/kg safety security period not determined due to the mode of use), sorgho (0.02mg/kg safety security period not determined due to the mode of use), wheat (0.5mg/kg safety security period not determined due to the mode of use). Plantation furrow application in cultures of potato (0.01mg/kg safety security period	G/SPS/N/BRA/930

Member	Partner affected	Notif. req.	Initiation/ notification	In force	Measure description	Product description	Source
					Plantation furrow application in cultures of potato (0.01mg/kg safety security period not determined due to the mode of use). Seedpieces (plantation) application in cultures of sugarcane (0.1mg/kg safety security period not determined due to the mode of use).	not determined due to the mode of use). Seedpieces (plantation) application in cultures of sugarcane (0.1mg/kg safety security period not determined due to the mode of use).	
Brazil	All Members	SPS	01-Apr-14		Draft resolution regarding the active ingredient METCONAZOLE to be included in the monograph list of active ingredients for pesticides, household cleaning products and wood preservers, published by Resolution - RE n° 165 of 29 August 2003, Brazilian Official Gazette (DOU Diário Oficial da União) of 2 September 2003 Draft Resolution regarding the active ingredient METCONAZOLE to be included in the monograph list of active ingredients of pesticides, household cleaning products and wood preservers, including the use in foliar application in cultures of cotton (0.2mg/kg safety security period of 14 days), garlic (0.2mg/kg safety security period of 14 days), peanut (0.2mg/kg safety security period of 7 days), potato (0.05mg/kg safety security period of 14 days), coffee (0.2mg/kg safety security period of 30 days), onion (0.2mg/kg safety security period of 14 days), carrot (0.05mg/kg safety security period of 14 days), chrysanthemum (non-food use), eucalyptus (non-food use), bean (0.05mg/kg safety security period of 15 days), pod bean (0.05mg/kg safety security period of 15 days), watermelon (0.05mg/kg safety security period of 14 days), melon (0.1mg/kg safety security period of 14 days), corn (0.02mg/kg safety security period of 45 days), strawberry (0.1mg/kg safety security period of 7 days), pepper (0.1mg/kg safety security period of 7 days), rose (non-food use), soy (0.05mg/kg safety security period of 14 days), tomato (0.05mg/kg safety security period of 7 days), wheat (0.1mg/kg safety security period of 30 days), grape (1.0mg/kg safety security period of 7 days).	Foliar application in cultures of cotton (0.2mg/kg safety security period of 14 days), garlic (0.2mg/kg safety security period of 14 days), peanut (0.2mg/kg safety security period of 7 days), potato (0.05mg/kg safety security period of 14 days), coffee (0.2mg/kg safety security period of 30 days), onion (0.2mg/kg safety security period of 14 days), carrot (0.05mg/kg safety security period of 14 days), chrysanthemum (non-food use), eucalyptus (non-food use), bean (0.05mg/kg safety security period of 15 days), pod bean (0.05mg/kg safety security period of 15 days), watermelon (0.05mg/kg safety security period of 14 days), melon (0.1mg/kg safety security period of 14 days), corn (0.02mg/kg safety security period of 45 days), strawberry (0.1mg/kg safety security period of 7 days), pepper (0.1mg/kg safety security period of 7 days), rose (non-food use), soy (0.05mg/kg safety security period of 14 days), tomato (0.05mg/kg safety security period of 14 days), wheat (0.1mg/kg safety security period of 30 days), grape (1.0mg/kg safety security period of 7 days).	G/SPS/N/BRA/928
Brazil	All Members	SPS	17-Mar-14		Draft resolution regarding the active ingredient FLUAZINAM to be included in the monograph list of active ingredients for pesticides, household cleaning products and wood preservers, published by Resolution - RE n° 165 of 29 August 2003, Brazilian Official Gazette (DOU Diário Oficial da União) of 2 September 2003 Draft Resolution regarding the active ingredient F47 - FLUAZINAM to be included in the monograph list of active ingredients of pesticides, household cleaning products and wood preservers, including the use in Foliar application in cultures of cotton (0.02mg/kg safety security period of 30 days), potato (0.1mg/kg safety security period of 14 days), bean (0.1mg/kg safety security period of 28 days), onion (0.05mg/kg safety security period of 14 days), sunflower (0.01mg/kg safety security period of 21 days), apple (5.0mg/kg safety security period of 14 days), strawberry (2.0mg/kg safety security period of 3 days), peach (2.0mg/kg safety security period of 7 days), soy (0.01mg/kg safety security period of 28 days), tomato (1.0mg/kg safety security period of 3 days). Soil application in cultures of potato (0.1mg/kg safety security period not determined due	Foliar application in cultures of cotton (0.02mg/kg safety security period of 30 days), potato (0.1mg/kg safety security period of 14 days), bean (0.1mg/kg safety security period of 28 days), onion (0.05mg/kg safety security period of 14 days), sunflower (0.01mg/kg safety security period of 21 days), apple (5.0mg/kg safety security period of 14 days), strawberry (2.0mg/kg safety security period of 3 days), peach (2.0mg/kg safety security period of 7 days), soy (0.01mg/kg safety security period of 28 days), tomato (1.0mg/kg safety security period of 3 days). Soil application in cultures of potato (0.1mg/kg safety security period not determined due to the mode of use). Plantation furrow application in cultures of sugarcane (MRL and safety period not determined due to the mode of use). Seeds application in cultures of rice, bean, corn, soy and wheat (MRL and safety period not determined due to the mode of use).	G/SPS/N/BRA/926

Member	Partner affected	Notif. req.	Initiation/ notification	In force	Measure description	Product description	Source
					to the mode of use). Plantation furrow application in cultures of sugarcane (MRL and safety period not determined due to the mode of use). Seeds application in cultures of rice, bean, corn, soy and wheat (MRL and safety period not determined due to the mode of use).		
Malaysia	All Members	SPS	10-Mar-14	01-Jul-14	New Import Requirements for Importation of Plants, Plant Products and Regulated Articles into Malaysia 2014 Malaysia proposes to revise and implement new import requirements of plants, plant products and regulated articles into Malaysia following the gazette of Malaysian Quarantine and Inspection Services Act 2011. This Act requires that the importation of any plant into Malaysia shall require an import license. The commodities would also have to be accompanied by a phytosanitary certificate with additional declarations stating that appropriate treatment/measures have been applied prior to importation.	Processed and dried for consumption soy bean (<i>Glycine max</i>), corn/maize grain (<i>Zea mays</i>), dried for consumption cocoa bean (<i>Theobroma cacao</i>), processed and dried for consumption coffee beans (<i>Coffea Arabica</i> , <i>Robusta coffee</i> , <i>Coffea liberica</i>), fresh/dried leaves tobacco (<i>Nicotiana tabacum</i>), fresh/raw dried cotton (<i>Gossypium hirsutum</i>), fresh orange and lime (<i>Citrus</i> spp.), fresh banana (<i>Musa</i> spp.), hay and straw for livestock feed (all grass species), fresh/raw or dry corn cob/skin cocoa/sago and other regulated articles, plants and plant products	G/SPS/N/MYS/27
Brazil	All Members	SPS	29-Jan-14		Draft resolution regarding the active ingredient Benzovindiflupyr to be included in the monograph list of active ingredients for pesticides, household cleaning products and wood preservers, published by Resolution - RE n° 165 of 29 August 2003, Brazilian Official Gazette (DOU-Diário Oficial da União) of 2 September 2003 Draft Resolution regarding the active ingredient Benzovindiflupyr to be included in the monograph list of active ingredients of pesticides, household cleaning products and wood preservers, including the use in foliar application in cultures of cotton (0.05mg/kg-safety security period of 30 days), peanuts (0.02mg/kg-safety security period of 7 days), sugarcane (0.02mg/kg-safety security period of 30 days), beans (0.05mg/kg-safety security period of 7 days), corn (0.01mg/kg-safety security period of 42 days) and soybean (0.03mg/kg-safety security period of 21 days).	Foliar application in cultures of cotton (0.05mg/kg-safety security period of 30 days), peanuts (0.02mg/kg-safety security period of 7 days), sugarcane (0.02mg/kg-safety security period of 30 days), beans (0.05mg/kg-safety security period of 7 days), corn (0.01mg/kg-safety security period of 42 days) and soybean (0.03mg/kg-safety security period of 21 days).	G/SPS/N/BRA/924
Brazil	All Members	SPS	24-Jan-14		Draft resolution regarding the active ingredient <i>BACILLUS THURINGIENSIS</i> to be included in the monograph list of active ingredients for pesticides, household cleaning products and wood preservers, published by Resolution - RE n° 165 of 29 August 2003, Brazilian Official Gazette (DOU-Diário Oficial da União) of 2 September 2003 Draft Resolution regarding the active ingredient <i>BACILLUS THURINGIENSIS</i> to be included in the monograph list of active ingredients of pesticides, household cleaning products and wood preservers, including the use in foliar application (MLR not determined-safety security period not determined) in cultures of pineapple, squash, zucchini, poplar, alfalfa, cotton peanuts, rice, potatoes, broccoli, coffee, sugarcane, carrot, citrus, coconut, cabbage, cauliflower, palm, bean, eucalyptus (useless for food), smoke (useless for food), apple, cassava, passion fruit, watermelon, melon, corn, pastures, cucumber, rubber tree, soybean, tomato, wheat and grape.	Foliar application (MLR not determined-safety security period not determined) in cultures of pineapple, squash, zucchini, poplar, alfalfa, cotton peanuts, rice, potatoes, broccoli, coffee, sugarcane, carrot, citrus, coconut, cabbage, cauliflower, palm, bean, eucalyptus (useless for food), smoke (useless for food), apple, cassava, passion fruit, watermelon, melon, corn, pastures, cucumber, rubber tree, soybean, tomato, wheat and grape.	G/SPS/N/BRA/916, G/SPS/N/BRA/916/Add.1

Member	Partner affected	Notif. req.	Initiation/ notification	In force	Measure description	Product description	Source
Brazil	All Members	SPS	24-Jan-14		Draft resolution regarding the active ingredient bifenthrin to be included in the monograph list of active ingredients for pesticides, household cleaning products and wood preservers, published by Resolution - RE n° 165 of 29 August 2003, Brazilian Official Gazette (DOU-Diário Oficial da União) of 2 September 2003 Draft Resolution regarding the active ingredient bifenthrin to be included in the monograph list of active ingredients of pesticides, household cleaning products and wood preservers, including the use in foliar application in cultures of cotton (0.05mg/kg-safety security period of 15 days), rice (0.7mg/kg-safety security period of 30 days), potato (0.03mg/kg-safety security period of 7 days), canola (0.02mg/kg-safety security period of 14 days), citrus (0.07mg/kg-safety security period of 7 days), cabbage (0.02 mg/kg-safety security period of 5 days), chrysanthemum (MLR not determined-safety security period not determined), beans (0.5mg/kg-safety security period of 20 days), tobacco (MLR not determined-safety security period not determined), mango (0.1mg/kg-safety security period of 7 days), papaya (0.3mg/kg-safety security period of 7 days), melon (0.05mg/kg-safety security period of 7 days), corn (0.02mg/kg-safety security period of 20 days), forage palma (0.1mg/kg-safety security period of 16 days), cucumber (0.02mg/kg-safety security period of 4 days), rose (MLR not determined-safety security period not determined), soybean (0.02mg/kg-safety security period of 20 days), tomato (0.02mg/kg-safety security period of 6 days), wheat (0.7mg/kg-safety security period of 14 days) and grape (0.1mg/kg-safety security period of 7 days). Soil application in cultures of potatoes (0.03mg/kg-safety security period of 35 days), cane sugar (0.02mg/kg-safety security period of 1 day), corn (0.02mg/kg-safety security period of 1 day). Seed application in cultures of cotton (0.05mg/kg-safety security period of 1 day), rice (0.7mg/kg-safety security period of 1 day), beans (0.5mg/kg-safety security period of 1 day), soy (0.02mg/kg-safety security period of 1 day) and wheat (0.7mg/kg-safety security period of 1 day). Stored products application in cultures of rice (0.7mg/kg-safety security period of 30 days), barley (0.5mg/kg-safety security period of 30 days), beans (0.5mg/kg-safety security period of 30 days), corn (0.02mg/kg-safety security period of 30 days) and wheat (0.7mg/kg-safety security period of 30 days). Localized application in culture of banana (0.02mg/kg-safety security period of 1 day).	Foliar application in cultures of cotton (0.05mg/kg-safety security period of 15 days), rice (0.7mg/kg-safety security period of 30 days), potato (0.03mg/kg-safety security period of 7 days), canola (0.02mg/kg-safety security period of 14 days), citrus (0.07mg/kg-safety security period of 7 days), cabbage (0.02 mg/kg-safety security period of 5 days), chrysanthemum (MLR not determined-safety security period not determined), beans (0.5mg/kg-safety security period of 20 days), tobacco (MLR not determined-safety security period not determined), mango (0.1mg/kg-safety security period of 7 days), papaya (0.3mg/kg-safety security period of 7 days), melon (0.05mg/kg-safety security period of 7 days), corn (0.02mg/kg-safety security period of 20 days), forage palma (0.1mg/kg-safety security period of 16 days), cucumber (0.02mg/kg-safety security period of 4 days), rose (MLR not determined-safety security period not determined), soybean (0.02mg/kg-safety security period of 20 days), tomato (0.02mg/kg-safety security period of 6 days), wheat (0.7mg/kg-safety security period of 14 days) and grape (0.1mg/kg-safety security period of 7 days). Soil application in cultures of potatoes (0.03mg/kg-safety security period of 35 days), cane sugar (0.02mg/kg-safety security period of 1 day), corn (0.02mg/kg-safety security period of 1 day). Seed application in cultures of cotton (0.05mg/kg-safety security period of 1 day), rice (0.7mg/kg-safety security period of 1 day), beans (0.5mg/kg-safety security period of 1 day), soy (0.02mg/kg-safety security period of 1 day) and wheat (0.7mg/kg-safety security period of 1 day). Stored products application in cultures of rice (0.7mg/kg-safety security period of 30 days), barley (0.5mg/kg-safety security period of 30 days), beans (0.5mg/kg-safety security period of 30 days), corn (0.02mg/kg-safety security period of 30 days) and wheat (0.7mg/kg-safety security period of 30 days). Localized application in culture of banana (0.02mg/kg-safety security period of 1 day).	G/SPS/N/BRA/917, G/SPS/N/BRA/917/Add.1
Brazil	All Members	SPS	24-Jan-14		Draft resolution regarding the active ingredient chlorflazuron to be included in the monograph list of active ingredients for pesticides, household cleaning products and wood preservers, published by Resolution - RE n° 165 of 29 August 2003, Brazilian Official Gazette (DOU-Diário Oficial da União) of 2 September 2003 Draft Resolution regarding the active ingredient chlorflazuron to be included in the monograph list of active	Foliar application in cultures of cotton (0.05mg/kg-safety security period of 14 days), potato (0.01mg/kg-safety security period of 7 days), sugar cane (0.01mg/kg-safety security period of 60 days), citrus (0.1mg/kg-safety security period of 28 days), corn (0.01mg/kg-safety security period of 14 days), cabbage (1.0mg/kg-safety security period of 7 days),	G/SPS/N/BRA/920, G/SPS/N/BRA/920/Add.1

Member	Partner affected	Notif. req.	Initiation/ notification	In force	Measure description	Product description	Source
					ingredients of pesticides, household cleaning products and wood preservers, including the use in foliar application in cultures of cotton (0.05mg/kg-safety security period of 14 days), potato (0.01mg/kg-safety security period of 7 days), sugar cane (0.01mg/kg-safety security period of 60 days), citrus (0.1mg/kg-safety security period of 28 days), corn (0.01mg/kg-safety security period of 14 days), cabbage (1.0mg/kg-safety security period of 7 days), soybean (0.05mg/kg-safety security period of 14 days), tomato (0.5mg/kg-safety security period of 3 days) and wheat (0.02mg/kg-safety security period of 14 days).	soybean (0.05mg/kg-safety security period of 14 days), tomato (0.5mg/kg-safety security period of 3 days) and wheat (0.02mg/kg-safety security period of 14 days)	
Brazil	All Members	SPS	08-Jan-14		Draft resolution regarding the active ingredient Methoxyfenozide to be included in the monograph list of active ingredients for pesticides, household cleaning products and wood preservers, published by Resolution - RE n° 165 of 29 August 2003, Brazilian Official Gazette (DOU-Diário Oficial da União) of September 2nd from 2003. Draft Resolution regarding the active ingredient Methoxyfenozide to be included in the monograph list of active ingredients of pesticides, household cleaning products and wood preservers, including the use in foliar application in cultures of Alamo (MLR not determined-safety security period not determined), Cotton (0,5mg/kg-safety security period of 7 days), Beans (0,02mg/kg-safety security period of 14 days), Apple (0,2 mg/kg-safety security period of 14 days), Corn (0,5mg/kg-safety security period of 7 days), Soybeans (0,05mg/kg-safety security period of 7 days), Tomato (0,1mg/kg-safety security period of 1 day) and Wheat (0,1mg/kg-safety security period of 14 days).	Foliar application in cultures of Alamo (MLR not determined-safety security period not determined), Cotton (0,5mg/kg-safety security period of 7 days), Beans (0,02mg/kg-safety security period of 14 days), Apple (0,2 mg/kg-safety security period of 14 days), Corn (0,5mg/kg-safety security period of 7 days), Soybeans (0,05mg/kg-safety security period of 7 days), Tomato (0,1mg/kg-safety security period of 1 day) and Wheat (0,1mg/kg-safety security period of 14 days).	G/SPS/N/BRA/913
Brazil	All Members	SPS	02-Dec-13		Draft resolution regarding the active ingredient Chlorfenapyr to be included in the monograph list of active ingredients for pesticides, household cleaning products and wood preservers, published by Resolution - RE n° 165 of 29 August 2003, Brazilian Official Gazette (DOU-Diário Oficial da União) of 2 September 2003 Draft Resolution regarding the active ingredient Chlorfenapyr to be included in the monograph list of active ingredients of pesticides, household cleaning products and wood preservers, including the use in foliar application in cultures of Malpighia emarginata (2.0mg/kg-safety security period of 7 days), cotton (0.3mg/kg-safety security period of 21 days), garlic (0.5mg/kg-safety security period of 14 days), Mulberry (2.0mg/kg-safety security period of 7 days), potato (0.05mg/kg-safety security period of 7 days), onion (0.05mg/kg-safety security period of 14 days), citrus (0.5mg/kg-safety security period of 14 days), cabbage (1.0mg/kg-safety security period of 14 days), chrysanthemum (Non-food Use), bean (0.1mg/kg-safety security period of 14 days), raspberry (2.0mg/kg-safety security period of 7 days), papaya (0.1mg/kg-safety security period of 14 days), passion fruit (0.05mg/kg-safety security period of 14 days), watermelon (0.05mg/kg-safety security period of 14 days), melon (0.05mg/kg-safety security period of 14 days), corn (0.05mg/kg-safety security period of 45 days), strawberry (2.0mg/kg-safety security period of 7 days), pepper (0.3mg/kg-safety security period of 14 days), pitanga (Eugenia uniflora) (2.0mg/kg-safety security period of 7 days), Brassica oleracea L. (0.2mg/kg-safety security period of 7 days), rose (Non-food Use) and tomato (0.2mg/kg-safety security	Foliar application in cultures of Malpighia emarginata (2.0mg/kg-safety security period of 7 days), cotton (0.3mg/kg-safety security period of 21 days), garlic (0.5mg/kg-safety security period of 14 days), Mulberry (2.0mg/kg-safety security period of 7 days), potato (0.05mg/kg-safety security period of 7 days), onion (0.05mg/kg-safety security period of 14 days), citrus (0.5mg/kg-safety security period of 14 days), cabbage (1.0mg/kg-safety security period of 14 days), chrysanthemum (Non-food Use), bean (0.1mg/kg-safety security period of 14 days), raspberry (2.0mg/kg-safety security period of 7 days), papaya (0.1mg/kg-safety security period of 14 days), passion fruit (0.05mg/kg-safety security period of 14 days), watermelon (0.05mg/kg-safety security period of 14 days), melon (0.05mg/kg-safety security period of 14 days), corn (0.05mg/kg-safety security period of 45 days), strawberry (2.0mg/kg-safety security period of 7 days), pepper (0.3mg/kg-safety security period of 14 days), pitanga (Eugenia uniflora) (2.0mg/kg-safety security period of 7 days), Brassica oleracea L. (0.2mg/kg-safety security period of 7 days), rose (Non-food Use) and tomato (0.2mg/kg-safety security	G/SPS/N/BRA/911

Member	Partner affected	Notif. req.	Initiation/ notification	In force	Measure description	Product description	Source
					strawberry (2.0mg/kg-safety security period of 7 days), pepper (0.3mg/kg-safety security period of 14 days), pitanga (Eugenia uniflora) (2.0mg/kg-safety security period of 7 days), Brassica oleracea L. (0.2mg/kg-safety security period of 7 days), rose (Non-food Use) and tomato (0.2mg/kg-safety security period of 7 days).	period of 7 days).	
Canada	All Members	SPS	21-Nov-13		<p>Proposed Maximum Residue Limit: Chlorantraniliprole (PMRL2013-106). The objective of the notified document PMRL2013-106 is to consult on the listed domestic and import maximum residue limits (MRLs) for chlorantraniliprole that have been proposed by the Health Canada's Pest Management Regulatory Agency (PMRA).</p> <p><u>MRL (ppm) Raw Agricultural Commodity (RAC) and/or Processed Commodity</u></p> <p>2.5 Lowbush blueberries</p> <p>2.0 Rapeseed (Crop Subgroup 20A), sunflower (Crop Subgroup 20B), soybeans^a</p> <p>1.0 Low growing berry (Crop Subgroup 13-07G) except lowbush blueberries</p> <p>0.7 Citrus fruit (Crop Group 10-revised)</p> <p>0.3 Root and tuber vegetables (Crop Group 1)b, Cotton (Crop Subgroup 20C)^c</p> <p>0.35 Bushberry (Crop Subgroup 13-07B), except lowbush blueberries and gooseberries</p> <p>0.05 Fat and meat by-products of poultry</p> <p>0.02 Meat of poultry^e</p> <p>^a The currently established MRL of 2.0 ppm for legume vegetables (CG 6) except soybeans will be extended to soybeans.</p> <p>^b The proposed MRL of 0.3 ppm will replace the currently established MRL of 0.01 ppm for corm and tuberous vegetables (CSG 1C).</p> <p>^c The currently established MRL of 0.3 ppm for undelinted cottonseed will be extended to Crop Subgroup 20C.</p> <p>^d The proposed MRL of 0.05 ppm will replace the currently established MRL of 0.01 ppm for fat and meat by-products of poultry.</p> <p>^e The proposed MRL of 0.02 ppm will replace the currently established MRL of 0.01 ppm for meat of poultry.</p> <p>ppm = parts per million MRLs are proposed for each commodity included in the listed crop groupings in accordance with the Residue Chemistry Crop Groups webpage http://www.hc-sc.gc.ca/cps-spc/pest/part/protect-proteger/food-nourriture/rccg-gcpcr-eng.php in the Pesticides and Pest Management section of Health Canada's website.</p>	Pesticide chlorantraniliprole in or on various food commodities (ICS Codes: 65.020, 65.100, 67.040, 67.080, 67.100, 67.120, 67.200)	G/SPS/N/CAN/769, G/SPS/N/CAN/769/Add.1
Brazil	All Members	SPS	05-Nov-13		Draft Resolution regarding the active ingredient BACILLUS THURINGIENSIS to be included in the monograph list of active ingredients for pesticides, household cleaning products and wood preservers, published by Resolution - RE n° 165 of 29 August 2003, Brazilian Official Gazette (DOU-Diário Oficial da	Foliar application in cultures of pineapple (MRL not determined; safety security period not determined), squash (MRL not determined; safety security period not determined), zucchini (MRL not determined; safety security period not determined), poplar (MRL	G/SPS/N/BRA/909

Member	Partner affected	Notif. req.	Initiation/ notification	In force	Measure description	Product description	Source
					<p>União) of 2 September 2003 Draft Resolution regarding the active ingredient Bacillus Thuringiensis to be included in the monograph list of active ingredients of pesticides, household cleaning products and wood preservers, including the use in foliar application in cultures of pineapple (MRL not determined; safety security period not determined), squash (MRL not determined; safety security period not determined), zucchini (MRL not determined; safety security period not determined), poplar (MRL not determined; safety security period not determined), alfalfa (MRL not determined; safety security period not determined), cotton (MRL not determined; safety security period not determined), peanuts (MRL not determined; safety security period not determined), rice (MRL not determined; safety security period not determined), potatoes (MRL not determined; safety security period not determined), broccoli (MRL not determined; safety security period not determined), coffee (MRL not determined; safety security period not determined), sugarcane (MRL not determined; safety security period not determined), citrus (MRL not determined; safety security period not determined), coconut (MRL not determined; safety security period not determined), cabbage (MRL not determined; safety security period not determined), cauliflower (MRL not determined; safety security period not determined), palm oil (MRL not determined; safety security period not determined), beans (MRL not determined; safety security period not determined), eucalyptus (Non-food Use), tobacco (Non-food Use), apple (MRL not determined; safety security period not determined), cassava (MRL not determined; safety security period not determined), passion fruit (MRL not determined; safety security period not determined), watermelon (MRL not determined; safety security period not determined), melon (MRL not determined; safety security period not determined), corn (MRL not determined; safety security period not determined), pastures (MRL not determined; safety security period not determined), cucumber (MRL not determined; safety security period not determined), cabbage (MRL not determined; safety security period not determined), soybean (MRL not determined; safety security period not determined), tomato (MRL not determined; safety security period not determined), wheat (MRL not determined; safety security period not determined), and grape (MRL not determined; safety security period not determined).</p>	<p>not determined; safety security period not determined), alfalfa (MRL not determined; safety security period not determined), cotton (MRL not determined; safety security period not determined), peanuts (MRL not determined; safety security period not determined), rice (MRL not determined; safety security period not determined), potatoes (MRL not determined; safety security period not determined), broccoli (MRL not determined; safety security period not determined), coffee (MRL not determined; safety security period not determined), sugarcane (MRL not determined; safety security period not determined), citrus (MRL not determined; safety security period not determined), coconut (MRL not determined; safety security period not determined), cabbage (MRL not determined; safety security period not determined), cauliflower (MRL not determined; safety security period not determined), palm oil (MRL not determined; safety security period not determined), beans (MRL not determined; safety security period not determined), eucalyptus (Non-food Use), tobacco (Non-food Use), apple (MRL not determined; safety security period not determined), cassava (MRL not determined; safety security period not determined), passion fruit (MRL not determined; safety security period not determined), watermelon (MRL not determined; safety security period not determined), melon (MRL not determined; safety security period not determined), corn (MRL not determined; safety security period not determined), pastures (MRL not determined; safety security period not determined), cucumber (MRL not determined; safety security period not determined), cabbage (MRL not determined; safety security period not determined), soybean (MRL not determined; safety security period not determined), tomato (MRL not determined; safety security period not determined), wheat (MRL not determined; safety security period not determined), and grape (MRL not determined; safety security period not determined)</p>	
Brazil	All Members	SPS	30-Oct-13		<p>Draft Resolution regarding the active ingredient CADUSAFOS to be included in the monograph list of active ingredients for pesticides, household cleaning products and wood preservers, published by Resolution - RE nº 165 of 29 August 2003, Brazilian Official Gazette (DOU-Diário Oficial da União) of 2 September 2003 Draft Resolution regarding the active ingredient Cadusafos to be included in the monograph list of active ingredients of</p>	<p>Soil application in the cultures of cotton (0.02mg/kg; safety security period not determined), potatoes (0.02mg/kg; safety security period of 60 days), coffee (0.05mg/kg; safety security period of 98 days), sugarcane (0.02mg/kg; safety security period not determined) and furrow application in the culture of soybean (0.01 mg/kg; safety security period not</p>	G/SPS/N/BRA/906

Member	Partner affected	Notif. req.	Initiation/ notification	In force	Measure description	Product description	Source
					pesticides, household cleaning products and wood preservers, including soil application in the cultures of cotton (0.02mg/kg; safety security period not determined), potatoes (0.02mg/kg; safety security period of 60 days), coffee (0.05mg/kg; safety security period of 98 days), sugarcane (0.02mg/kg; safety security period not determined) and furrow application in the culture of soybean (0.01 mg/kg; safety security period not determined).	determined)	
Brazil	All Members	SPS	29-Oct-13		Draft Resolution regarding the active ingredient INDOXACARB to be included in the monograph list of active ingredients for pesticides, household cleaning products and wood preservers, published by Resolution - RE nº 165 of 29 August 2003, Brazilian Official Gazette (DOU-Diário Oficial da União) of 2 September 2003 Draft Resolution regarding the active ingredient Indoxacarb to be included in the monograph list of active ingredients of pesticides, household cleaning products and wood preservers, including the use in cultures of cotton (0.3mg/kg; safety security period of 14 days), potato (0.05mg/kg; safety security period of 1 day), mango (0.02mg/kg; safety security period of 15 days), melon (0.5mg/kg; safety security period of 1 day), corn (0.2mg/kg; safety security period of 30 days), cucumber (0.5mg/kg; safety security period of 1 day) and cabbage (0.02mg/kg; safety security period of 1 day), soybean (0.2mg/kg; safety security period of 14 days), tomato (0.1mg/kg; safety security period of 1 day) and grape (0.02mg/kg-safety security period of 21 days).	Foliar application in cultures of cotton (0.3mg/kg; safety security period of 14 days), potato (0.05mg/kg; safety security period of 1 day), mango (0.02mg/kg; safety security period of 15 days), melon (0.5mg/kg; safety security period of 1 day), corn (0.2mg/kg; safety security period of 30 days), cucumber (0.5mg/kg; safety security period of 1 day) and cabbage (0.02mg/kg; safety security period of 1 day), soybean (0.2mg/kg; safety security period of 14 days), tomato (0.1mg/kg; safety security period of 1 day) and grape (0.02mg/kg; safety security period of 21 days).	G/SPS/N/BRA/905
Brazil	All Members	SPS	21-Oct-13		Draft resolution regarding the active ingredient Acetamiprid to be included in the monograph list of active ingredients for pesticides, household cleaning products and wood preservers, published by Resolution - RE nº 165 of 29 August 2003, Brazilian Official Gazette (DOU-Diário Oficial da União) of 2 September Draft Resolution regarding the active ingredient Acetamiprid to be included in the monograph list of active ingredients of pesticides, household cleaning products and wood preservers, including the use in foliar application in cultures of cotton (1.0mg/kg-safety security period of 7 days), rice (0.3mg/kg-safety security period of 30 days), potatoes (0.5mg/kg-safety security period of 7 days), eucalyptus (Non-food Use), beans (0.1mg/kg-safety security period of 7 days), apple (0.1mg/kg-safety security period of 7 days), papaya (0.1mg/kg-safety security period of 5 days), watermelon (0.1 mg/kg-safety security period of 3 days), Jatropha (Non-food Use), tomato (0.5mg/kg-safety security period of 3 days), soybean (0.05mg/kg-safety security period of 14 days), wheat (1.0mg/kg-safety security period of 15 days). Seed application in cultures of cotton (1.0mg/kg-safety security period of 1 day), rice (0.05mg/kg-safety security period of 1 day), corn (0.05mg/kg-safety security period of 1 day), soybean (0.05mg/kg-safety security period of 1 day), wheat (1.0mg/kg-	Foliar application in cultures of cotton (1.0mg/kg-safety security period of 7 days), rice (0.3mg/kg-safety security period of 30 days), potatoes (0.5mg/kg-safety security period of 7 days), eucalyptus (Non-food Use), beans (0.1mg/kg-safety security period of 7 days), apple (0.1mg/kg-safety security period of 7 days), papaya (0.1mg/kg-safety security period of 5 days), watermelon (0.1 mg/kg-safety security period of 3 days), melon (0.2mg/kg-safety security period of 3 days), Jatropha (Non-food Use), tomato (0.5mg/kg-safety security period of 3 days), soybean (0.05mg/kg-safety security period of 14 days), wheat (1.0mg/kg-safety security period of 15 days). Seed application in cultures of cotton (1.0mg/kg-safety security period of 1 day), rice (0.05mg/kg-safety security period of 1 day), corn (0.05mg/kg-safety security period of 1 day), soybean (0.05mg/kg-safety security period of 1 day), wheat (1.0mg/kg-safety security period of 60 days).	G/SPS/N/BRA/902

Member	Partner affected	Notif. req.	Initiation/ notification	In force	Measure description	Product description	Source
					safety security period of 1 day). Trunk application in cultures of coffee (0.2mg/kg-safety security period of 30 days) and citrus (0.5mg/kg-safety security period of 60 days).This public consultation is open for comments of the public for 10 (ten) days, due to the judicial decision number 288339120134013400 that establishes the time limit for ANVISA's final decision regarding this product.		
Brazil	All Members	SPS	21-Oct-13		Draft resolution regarding the active ingredient Alfa-Cypermethrin to be included in the monograph list of active ingredients for pesticides, household cleaning products and wood preservers, published by Resolution - RE nº 165 of 29 August 2003, Brazilian Official Gazette (DOU-Diário Oficial da União) of 2 September 2003 Draft Resolution regarding the active ingredient C58 - Alfa-Cypermethrin to be included in the monograph list of active ingredients of pesticides, household cleaning products and wood preservers, including the use in foliar application in cultures of cotton (0.01mg/kg-safety security period of 15 days), rice (0.3mg/kg-safety security period of 30 days), potatoes (0.01mg/kg-safety security period of 15 days), coffee (0.01mg/kg-safety security period of 2 days), beans (0.03mg/kg-safety security period of 14 days), corn (0.01mg/kg-safety security period of 21 days), soybean (0.01mg/kg-safety security period of 14 days), tomato (0.05 mg/kg-safety security period of 7 days) and soil application in cultures of potato (0.01mg/kg-safety security period of 1 day) and sugarcane (0.01mg/kg-safety security period of 1 day).This public consultation is open for comments of the public for 10 (ten) days, due to the judicial decision number 288339120134013400 that establishes the time limit for ANVISA's final decision regarding this product.	Foliar application in cultures of cotton (0.01mg/kg-safety security period of 15 days), rice (0.3mg/kg-safety security period of 30 days), potatoes (0.01mg/kg-safety security period of 15 days), coffee (0.01mg/kg-safety security period of 2 days), beans (0.03mg/kg-safety security period of 14 days), corn (0.01mg/kg-safety security period of 21 days), soybean (0.01mg/kg-safety security period of 14 days), tomato (0.05 mg/kg-safety security period of 7 days). Soil application in cultures of potato (0.01mg/kg-safety security period of 1 day) and sugarcane (0.01mg/kg-safety security period of 1 day)	G/SPS/N/BRA/903
Mexico	Peru	SPS	21-Oct-13		Pursuant to the Decision establishing the module of phytosanitary requirements for the importation of goods regulated by the Ministry of Agriculture, Livestock, Rural Development, Fisheries and Food, in relation to plant health (<i>Acuerdo por el que se establece el módulo de requisitos fitosanitarios para la importación de mercancías reguladas por la Secretaría de Agricultura, Ganadería, Desarrollo Rural, Pesca y Alimentación, en materia de sanidad vegetal</i>), published in the Mexican Official Journal on 7 February 2012, the phytosanitary requirements for the importation into Mexico of uncarded or uncombed cotton fibre (<i>Gossypium barbadense</i>) for processing, originating in and coming from Peru, established following the pest risk analysis or risk assessment, have been submitted for public comment.	Cotton fibre (<i>Gossypium barbadense</i>), not carded or combed, for processing.	G/SPS/N/MEX/241, G/SPS/N/MEX/241/Add.1
Brazil	All Members	SPS	16-Sep-13		Draft resolution regarding the active ingredient fluxapyroxad to be included in the monograph list of active ingredients for pesticides, household cleaning products and wood preservers, published by Resolution - RE nº 165 of 29 August 2003, Brazilian Official Gazette (DOU-Diário Oficial da União) of 2 September 2003 Draft Resolution regarding the active ingredient	Foliar application in cultures of cotton (0.5mg/kg; safety security period of 14 days), peanuts (0.01mg/kg; safety security period of 14 days), oats (0.30mg/kg; safety security period of 30 days), potatoes (0.01mg/kg; safety security period of 3 days), sugarcane (0.03mg/kg; safety security period	G/SPS/N/BRA/899

Member	Partner affected	Notif. req.	Initiation/ notification	In force	Measure description	Product description	Source
					fluxapyroxad to be included in the monograph list of active ingredients of pesticides, household cleaning products and wood preservers, including the use in the cultures of cotton (0.5mg/kg; safety security period of 14 days), peanuts (0.01mg/kg; safety security period of 14 days), oats (0.30mg/kg; safety security period of 30 days), potatoes (0.01mg/kg; safety security period of 3 days), sugarcane (0.03mg/kg; safety security period of 30 days), onion (0.01mg/kg; safety security period of 7 days) and carrot (0.02mg/kg; safety security period of 7 days), barley (0.30mg/kg; safety security period of 30 days), citrus (0.20mg/kg; safety security period of 14 days), beans (0.03mg/kg; safety security period of 14 days), sunflower (0.20mg/kg; safety security period of 30 days), apple (0.50mg/kg; safety security period of 14 days), mango (0.50mg/kg; safety security period of 7 days), melon (0.05mg/kg; safety security period of 7 days), corn (0.05mg/kg; safety security period of 45 days), cucumber (0.05mg/kg; safety security period of 7 days), pepper (0.05mg/kg; safety security period of 3 days), soybean (0.05mg/kg; safety security period of 14 days), sorghum (2.0mg/kg; safety security period of 1 day), tomato (0.20mg/kg; safety security period of 7 days) and wheat (0.50mg/kg; safety security period of 30 days).	of 30 days), onion (0.01mg/kg; safety security period of 7 days) and carrot (0.02mg/kg; safety security period of 7 days), barley (0.30mg/kg; safety security period of 30 days), citrus (0.20mg/kg; safety security period of 14 days), beans (0.03mg/kg; safety security period of 14 days), sunflower (0.20mg/kg; safety security period of 30 days), apple (0.50mg/kg; safety security period of 14 days), mango (0.50mg/kg; safety security period of 7 days), melon (0.05mg/kg; safety security period of 7 days), corn (0.05mg/kg; safety security period of 45 days), cucumber (0.05mg/kg; safety security period of 7 days), pepper (0.05mg/kg; safety security period of 3 days), soybean (0.05mg/kg; safety security period of 14 days), sorghum (2.0mg/kg; safety security period of 1 day), tomato (0.20mg/kg; safety security period of 7 days), wheat (0.50mg/kg; safety security period of 30 days)	
Canada	All Members	SPS	01-Aug-13		<p>Proposed Maximum Residue Limit: Fluopyram (PMRL2013-52) The objective of the notified document PMRL2013-52 is to consult on the listed domestic and import maximum residue limits (MRLs) for fluopyram (in crop commodities) and for fluopyram and the metabolite fluopyram-benzamide (in livestock commodities) that have been proposed by Health Canada's Pest Management Regulatory Agency (PMRA).</p> <p><u>MRL (ppm) Raw Agricultural Commodity (RAC) and/or Processed Commodity</u></p> <p>2.0 Grapes 1.8 Canola 1.5 Cereal grains, except rice (Crop Group 15, except rice); strawberries 1.0 Bananas; watermelon 0.4 Dry chickpeas; dry lentils; meat by-products of cattle, goats, horses and sheep 0.3 Apples 0.1 Meat by-products of poultry; sugar beet roots; soybeans 0.09 Dried beans 0.06 Eggs; Milk 0.05 Tree nuts (Crop Group 14); fat and meat of cattle, goats, horses and sheep; pistachios 0.03 Meat by-products of hogs; fat and meat of poultry 0.02 Tuberos and corm vegetables (Crop Subgroup 1C); fat and meat of hogs; peanuts 0.01 Undelinted cotton seeds</p> <p>ppm = parts per million MRLs are proposed for each commodity included in the listed crop groupings in accordance with the Residue Chemistry Crop</p>	Pesticide fluopyram in or on various commodities (ICS Codes: 65.020, 65.100, 67.040)	G/SPS/N/CAN/714, G/SPS/N/CAN/714/Add.1

Member	Partner affected	Notif. req.	Initiation/ notification	In force	Measure description	Product description	Source
					Groups webpage (http://www.hc-sc.gc.ca/cps-spc/pest/part/protect-proteger/food-nourriture/rccq-gcpcr-eng.php) in the Pesticides and Pest Management section of Health Canada's website.		
Brazil	All Members	SPS	12-Jul-13	24-Jul-13	Draft resolution regarding the active ingredient imidacloprid Draft Resolution for the active ingredient imidacloprid to be included in the monograph list of active ingredients of pesticides, household cleaning products and wood preservers.	Foliar application in lettuce (0.5mg/kg-period security of 14 days), cotton (0.5mg/kg-period security of 30 days), garlic (0.05mg/kg-period security of 30 days), chicory (0.01mg/kg-period security of 14 days), bananas (0.1mg/kg-period security of 7 days), potatoes (0.5mg/kg-period security of 21 days), eggplant (0.5mg/kg-period security of 7 days), onions (0.05mg/kg-period security of 21 days), citrus (1.0mg/kg-period security of 21 days), cabbage (2.0mg/kg-period security of 14 days), cauliflower (0.05mg/kg-period security of 82 days), chrysanthemum, eucalyptus, beans (0.07mg/kg-period security of 21 days), tobacco, gerbera, guava (0.1mg/kg-period security of 7 days), papaya (2.0mg/kg-period security of 7 days), mango (0.7mg/kg-period security of 7 days), passion fruit (0.2mg/kg-period security of 7 days), watermelon (0.2mg/kg-period security of 7 days), corn (0.5mg/kg-period security of 30 days), cactus pear (0.5mg/kg-period security of 16 days), cucumber (0.2mg/kg-period security of 7 days), pepper (0.5mg/kg-period security of 7 days), pine, poinsettia, soybeans (0.1mg/kg-period security of 21 days), tomatoes (0.5mg/kg-period security of 7 days), wheat (0.5mg/kg-period security of 30 days) and grapes (1.0mg/kg-period security of 7 days). Foliar application in seeds of pineapple (0.05mg/kg-period security of 75 days), pumpkin (0.05mg/kg-period security of 40 days), zucchini (0.05mg/kg-period security of 40 days), broccoli (0.01mg/kg-period security of 82 days), chicory (0.01mg/kg-period security of 14 days), cauliflower (0.05mg/kg-period security of 82 days), eucalyptus, watermelon (0.2mg/kg-period security of 40 days), cantaloupe (0.2mg/kg-period security of 40 days), cucumber (0.2mg/kg-period security of 40 days), cabbage (0.05mg/kg-period security of 50 days). Soil application in cane sugar (0.05mg/kg-period security of 1 day), coffee (0.07mg/kg-period security of 45 days), eucalyptus, tobacco and pine. Trunk application in coffee (0.07mg/kg-period security of 45 days), citrus (1.0mg/kg-period security of 21 days), papaya (2.0mg/kg-period security of 60 days), peach (0.1mg/kg-period security of 30 days) and grape (1.0mg/kg-period security of 60 days). Application in seeds of cotton (0.5mg/kg-period security of 1 day),	G/SPS/N/BRA/882

Member	Partner affected	Notif. req.	Initiation/ notification	In force	Measure description	Product description	Source
						peanuts (0.05mg/kg-period security of 1 day), rice (0.05mg/kg-period security of 1 day), oats (0.05mg/kg-period security of 1 day), barley (0.05mg/kg-period security of 1 day), beans (0.07mg/kg-period security of 1 day), sunflower (0.1mg/kg-period security of 1 day), castor, corn (0.5mg/kg-period security of 1 day), soybeans (0.1mg/kg-period security of 1 day), sorghum (0.1mg/kg-period security of 1 day) and wheat (0.5mg/kg-period security of 1 day). Application in termite control, as approved at the label and package insert.	
Brazil	All Members	SPS	12-Jul-13		Draft Resolution n. 25 of 2 July 2013 Draft Resolution regarding the active ingredient Diflubenzuron to be included in the monograph list of active ingredients of pesticides, household cleaning products and wood preservers, including the use in the cultures of cotton (0.2mg/kg; safety period of 28 days), rice (0.1mg/kg; safety period of 70 days), citrus (0.2mg/kg; safety period of 30 days), corn (0.2mg/kg; safety period of 60 days), soybean (0.2mg/kg; safety period of 21 days), tomato (0.5mg/kg; safety period of 4 days) and wheat (0.5mg/kg; safety period of 30 days).	Active ingredient Diflubenzuron on cotton, rice, citrus, corn, soybean, tomato and wheat	G/SPS/N/BRA/883
Canada	All Members	SPS	04-Jul-13		Proposed Maximum Residue Limit: Fluazifop-butyl (PMRL2013-35) The objective of the notified document PMRL2013-35 is to consult on the listed domestic maximum residue limits (MRLs) for fluazifop-butyl (calculated as acid) that have been proposed by the Health Canada's Pest Management Regulatory Agency (PMRA). <u>MRL (ppm) Raw Agricultural Commodity (RAC) and/or Processed Commodity</u> 3.0 Asparagus 2.0 Carrot roots 1.5 Peanuts 1.0 Non-bell peppers 0.5 Dry bulb onions, rhubarb, sweet potato roots 0.2 Cotton oil 0.1 Undelinted cotton seeds, macadamia nuts, green coffee beans 0.05 Pecan nuts ppm = parts per million	Pesticide fluazifop-butyl in or on various commodities (ICS: 65.020, 65.100, 67.040)	G/SPS/N/CAN/695, G/SPS/N/CAN/695/Add.1
Canada	All Members	SPS	28-May-13		Proposed Maximum Residue Limit: Fenamidone (PMRL2013-28) The objective of the notified document PMRL2013-28 is to consult on the listed domestic maximum residue limits (MRLs) for fenamidone that have been proposed by the Health Canada's Pest Management Regulatory Agency (PMRA). <u>MRL (ppm) Raw Agricultural Commodity (RAC) and/or Processed Commodity</u> 60 Leafy vegetables except Brassica (Crop Group 4)*; fresh coriander leaves 3.5 Nonbell Pepper/Eggplant Subgroup (Crop	Pesticide fenamidone in or on various commodities (ICS Codes: 65.020, 65.100, 67.040)	G/SPS/N/CAN/685, G/SPS/N/CAN/685/Add.1

Member	Partner affected	Notif. req.	Initiation/ notification	In force	Measure description	Product description	Source
					Subgroup 8-09C) 1.0 Tomato Subgroup (Crop Subgroup 8-09A, except tomatoes); bell peppers 0.15 Root vegetables, except sugar beet (Crop Subgroup 1B, except radish roots) 0.02 Tuberos and corn vegetables (Crop Subgroup 1C, except potatoes); undelinted cotton seeds ppm = parts per million * This action revises the established Canadian MRLs of 20 ppm for leaf lettuce and 15 ppm for head lettuce and adds MRLs for the remaining commodities in the crop group. MRLs are proposed for each food commodity included in the rapeseed subgroup in accordance with the Residue Chemistry Crop Groups webpage (http://www.hc-sc.gc.ca/cps-spc/pest/part/protect-proteger/food-nourriture/rccg-gcpcr-eng.php) in the Pesticides and Pest Management section of Health Canada's website.		
United States of America	All Members	SPS	11-Apr-13	27-Mar-13	Abamectin; Pesticide Tolerances This regulation raises tolerances for residues of abamectin (also known as avermectin B1 a mixture of avermectins containing greater than or equal to 80% avermectin B1a (5-O-demethyl avermectin A1) and less than or equal to 20% avermectin delta-8,9-isomer) in or on cotton and strawberries.	Cotton and strawberries	G/SPS/N/USA/2530
United States of America	All Members	SPS	05-Mar-13	27-Feb-13	Pyraflufen-ethyl; Pesticide Tolerances This regulation establishes tolerances for residues of pyraflufen-ethyl in or on multiple commodities which are identified and discussed later in this document. Nichino America, Inc. requested these tolerances under the Federal Food, Drug, and Cosmetic Act (FFDCA).	Almond, hulls; Cattle, fat; Cattle, meat; Cattle, meat by-products; Corn, field, forage; Corn, field, grain; Corn, field, stover; Cotton, gin by-products; Cotton, undelinted seed; Fruit, pome, group 11-10; Fruit, stone, group 12; Goat, fat; Goat, meat; Goat, meat by-products; Grape; Grass, forage, group 17; Grass, hay, group 17; Horse, fat; Horse, meat; Horse, meat by-products; Milk; Nut, tree, group 14; Olive; Peanut; Peanut, hay; Pistachio; Pomegranate; Potato; Sheep, fat; Sheep, meat; Sheep, meat by-products; Soybean, forage; Soybean, hay; Soybean, seed; Wheat, forage; Wheat, grain; Wheat, hay; and Wheat, straw.	G/SPS/N/USA/2523
Brazil	All Members	SPS	11-Feb-13		Draft Resolution no. 3 of 30 January 2013 Draft Resolution for the active ingredient Teflubenzurom to be included in the monograph list of active ingredients of pesticides, household sanitizing products and wood preservers, including the use in the cultures of cotton (leaf application, MRL of 0.1 mg/kg and safety period of 30 days), potato (leaf application, MRL of 0.1 mg/kg and safety period of 7 days), coffee (leaf application, MRL of 0.5 mg/kg and safety period of 30 days), sugar cane (leaf application, MRL of 0.01 mg/kg and safety period of 40 days), cauliflower (leaf application, MRL of 0.15 mg/kg and safety period of 4 days), tobacco (not food use), corn (leaf application, MRL of 0.1 mg/kg and safety period of 45 days), cabbage (leaf application, MRL of 0.05 mg/kg and safety period of 14 days), soybean (leaf application, MRL of 0.1 mg/kg and safety period of 30 days), tomato (leaf application, MRL of 0.1 mg/kg and safety	Active ingredient T33 - Teflubenzurom	G/SPS/N/BRA/866

Member	Partner affected	Notif. req.	Initiation/ notification	In force	Measure description	Product description	Source
					period of 4 days) and wheat (leaf application, MRL of 0.05 mg/kg and safety period of 14 days).		
Brazil	All Members	SPS	04-Jan-13		Draft Resolution n. 74 of 30 November 2012 Draft Resolution for the active ingredient C63 Lambda-Cialotrina to be included in the Monograph list of active ingredients of pesticides, household sanitizing products and wood preservers, including the use in the cultures of watercress (leaf application, MRL of 1.0 mg/kg and safety period of 1 day), lettuce (leaf application, MRL of 1.0 mg/kg and safety period of 1 day), cotton (leaf application, MRL of 0.05 mg/kg and safety period of 10 days), garlic (leaf application, MRL 0.02 mg/kg and safety period of 7 days), leek (leaf application, MRL of 0.02 mg/kg and safety period of 7 days), peanut (leaf application, MRL of 0.2 mg/kg and safety period of 21 days), rice (leaf application, MRL of 1.0 mg/kg and safety period of 21 days), rice (stored products application, MRL of 1.0 mg/kg and safety period of 42 days), rice (seeds application MRL of 1.0 mg/kg and safety period not determined), oatmeal (leaf application, MRL of 0.2 mg/kg and safety period of 7 days), potato (leaf application, MRL of 0.05 mg/kg and safety period of 3 days), broccoli (leaf application, MRL of 0.1 mg/kg and safety period of 1 day), coffee (leaf application, MRL of 0.05 mg/kg and safety period of 1 day), sugar cane (leaf application, MRL of 0.01 mg/kg and safety period of 30 days), sugar cane (MRL of 0.01 mg/kg and safety period not determined), onion (leaf application, MRL of 0.5 mg/kg and safety period of 3 days), barley (leaf application, MRL of 2.0 mg/kg and safety period of 3 days), barley (stored products application, MRL of 2.0 mg/kg and safety period of 42 days), barley (seeds application, MRL of 2.0 mg/kg and safety period not determined), citrus (leaf application, MRL of 1.0 mg/kg and safety period of 10 days), coriander (leaf application, MRL of 1.0 mg/kg and safety period of 1 day), cabbage (leaf application, MRL of 0.1 mg/kg and safety period of 1 day), cauliflower (leaf application, MRL of 0.1 mg/kg and safety period of 1 day), bean (leaf application, MRL of 0.05 mg/kg and safety period of 15 days), fig (leaf application, MRL of 0.05 mg/kg and safety period of 1 day), tobacco (not food use), sunflower (leaf application, MRL of 0.01 mg/kg and safety period of 21 days), mango (leaf application, MRL of 0.1 mg/kg and safety period of 5 days), melon (leaf application, MRL of 0.1 mg/kg and safety period of 3 days), corn (leaf application, MRL of 1.0 mg/kg and safety period of 15 days), corn (seeds application, MRL of 1.0 mg/kg and safety period not determined), corn (stored products application, MRL of 1.0 mg/kg and safety period of 42 days), strawberry (leaf application, MRL of 0.5 mg/kg and safety period of 1 day), forage palm (animal food, leaf application, MRL of 2.0 mg/kg and safety period of 7 days), grazing (leaf application, MRL of 2.0 mg/kg and safety period of 3 days), grazing (seeds application, MRL of 2.0 mg/kg and safety period not determined), cucumber (leaf application, MRL of 0.01 mg/kg and	Active ingredient C63 - Lambda-Cialotrina	G/SPS/N/BRA/857

Member	Partner affected	Notif. req.	Initiation/ notification	In force	Measure description	Product description	Source
					safety period of 1 day), pepper (leaf application, MRL of 0.2 mg/kg and safety period of 1 day), cabbage (leaf application, MRL of 0.01 mg/kg and safety period of 1 day), soybean (leaf application, MRL of 0.05 mg/kg and safety period of 20 days), soybean (seeds application, MRL of 0.05 mg/kg and safety period not determined), sorghum (leaf application, MRL of 0.3 mg/kg and safety period of 7 days), sorghum (seeds application, MRL of 0.3 mg/kg and safety period not determined), tomato (leaf application, MRL of 0.05 mg/kg and safety period of 3 days), wheat (leaf application, MRL of 0.5 mg/kg and safety period of 15 days), wheat (stored products application, MRL of 0.5 mg/kg and safety period of 42 days), wheat (seeds application, MRL of 0.5 mg/kg and safety period not determined), and grape (leaf application MRL of 0.3 mg/kg and safety period of 7 days).		
Brazil	All Members	SPS	04-Jan-13		Draft resolution n. 75 of 30 November 2012 Draft Resolution for the active ingredient Sophora Flavescens to be included in the Monograph list of active ingredients of pesticides, household sanitizing products and wood preservers, including the use in the cultures of cotton (leaf application, MRL and safety period not determined), coffee (leaf application, MRL and safety period not determined) and citrus (leaf application, MRL and safety period not determined).	Active ingredient S17 - Sophora Flavescens	G/SPS/N/BRA/858
Brazil	All Members	SPS	04-Jan-13		Draft Resolution n. 76 of 30 November 2012 Draft Resolution for the active ingredient Clorfenapir to be included in the Monograph list of active ingredients of pesticides, household sanitizing products and wood preservers, including the use in the cultures of acerola (leaf application, MRL of 2.0 mg/kg and safety period of 3 days), cotton (leaf application, MRL of 0.3 mg/kg and safety period of 21 days), garlic (leaf application, MRL of 0.5 mg/kg and safety period of 14 days), mulberry (leaf application, MRL of 2.0 mg/kg and safety period of 7 days), potato (leaf application, MRL of 0.05 mg/kg and safety period of 7 days), onion (leaf application, MRL of 0.05 mg/kg and safety period of 14 days), citrus (leaf application, MRL of 0.5 mg/kg and safety period of 14 days), cabbage (leaf application, MRL of 1.0 mg/kg and safety period of 14 days), chrysanthemum (not food use), bean (leaf application, MRL of 0.1 mg/kg and safety period of 14 days), raspberry (leaf application, MRL of 2.0 mg/kg and safety period of 7 days), papaya (leaf application, MRL of 0.1 mg/kg and safety period of 14 days), passion fruit (leaf application, MRL of 0.05 mg/kg and safety period of 14 days), watermelon (leaf application, MRL of 0.05 mg/kg and safety period of 14 days), melon (leaf application, MRL of 0.05 mg/kg and safety period of 14 days), corn (leaf application, MRL of 0.05 mg/kg and safety period of 45 days), strawberry (leaf application, MRL of 2.0 mg/kg and safety period of 7 days), pepper (leaf application, MRL of 0.3 mg/kg and safety period of 14 days), cabbage (leaf application, MRL of 2.0 mg/kg and safety period of 7 days), surinam cherry (leaf application, MRL of 2.0 mg/kg and safety	Active Ingredient C40 - Clorfenapir	G/SPS/N/BRA/859

Member	Partner affected	Notif. req.	Initiation/ notification	In force	Measure description	Product description	Source
					period of 7 days), rose (not food use), and tomato (leaf application, MRL of 0.05 mg/kg and safety period of 3 days).		
Brazil	All Members	SPS	21-Dec-12		Draft Resolution n. 69 of 16 November 2012 Draft Resolution for the active ingredient Clorfluazurom to be included in the Monograph list of active ingredients of pesticides, household sanitizing products and wood preservers, including the use in the cultures of cotton (leaf application MRL of 0.05 mg/kg and safety period of 14 days), potato (leaf application MRL of 0.01 mg/kg and safety period of 7 days), citrus (leaf application MRL of 0.1 mg/kg and safety period of 28 days), corn (leaf application MRL of 0.01 mg/kg and safety period of 14 days), cabbage (leaf application MRL of 1.0 mg/kg and safety period of 7 days), soybean (leaf application MRL of 0.05 mg/kg and safety period of 14 days), tomato (leaf application MRL of 0.5 mg/kg and safety period of 3 days) and wheat (leaf application MRL of 0.02 mg/kg and safety period of 14 days).	Active ingredient Ethiprole C38 Clorfluazurom	G/SPS/N/BRA/850
Brazil	All Members	SPS	29-Oct-12		Draft Resolution n° 63 of 4 October 2012 Draft Resolution for the active ingredient Benfuracarb to be included in the monograph list of active ingredients of pesticides, household sanitizing products and wood preservers, including the use in the cultures of cotton (leaf application, MRL of 0.1 mg/kg and safety period of 7 days), cotton (seeds application, MRL of 0.1 mg/kg and safety period of 1 day), rice (seeds and soil application, MRL of 0.05 mg/kg and safety period not determined), potato (seeds and soil application, MRL of 0.05 mg/kg and safety period not determined), sugar cane (soil application, MRL of 0.1 mg/kg and safety period not determined), corn (seeds application, MRL of 0.05 mg/kg and safety period not determined) and tomato (seeds and soil application, MRL of 0.05 mg/kg and safety period not determined).	Active ingredient B35 - Benfuracarb	G/SPS/N/BRA/836
Brazil	All Members	SPS	29-Oct-12		Draft Resolution n° 58 of 4 October 2012 Draft Resolution for the active ingredient Pymetrozine to be included in the monograph list of active ingredients of pesticides, household sanitizing products and wood preservers, including the use in the cultures of lettuce (MRL of 0.1 mg/kg and safety period of 7 days), cotton (MRL of 0.1 mg/kg and safety period of 7 days), potato (MRL of 0.01 mg/kg and safety period of 7 days), cabbage (MRL of 0.1 mg/kg and safety period of 5 days), smoko (MRL of 3.0 mg/kg and safety period of 7 days), melon (MRL of 1.0 mg/kg and safety period of 3 days) and tomato (MRL of 0.1 mg/kg and safety period of 3 days). All the cultures in leaf application.	Active ingredient P52 - Pymetrozine	G/SPS/N/BRA/837
Brazil	All Members	SPS	29-Oct-12		Draft Resolution n° 53 of 4 October 2012 Draft Resolution for the active ingredient Ethiprole to be included in the monograph list of active ingredients of pesticides, household sanitizing products and wood preservers, including the use in the cultures of cotton (leaf application, MRL of 0.1 mg/kg and safety period of 30 days), rice (leaf application, MRL of 0.005 mg/kg and safety period of 75 days) and sugar cane (leaf application, MRL of 0.005 mg/kg and safety period of 180 days).	Active ingredient - Ethiprole	G/SPS/N/BRA/839

Member	Partner affected	Notif. req.	Initiation/ notification	In force	Measure description	Product description	Source
Brazil	All Members	SPS	29-Oct-12		Draft Resolution nº 57 of 4 October 2012 Draft Resolution for the active ingredient Thiophanate-methyl to be included in the monograph list of active ingredients of pesticides, household sanitizing products and wood preservers, including the use in the cultures of pineapple (leaf application, MRL of 0.5 mg/kg and safety period of 14 days), pumpkin (leaf application, MRL of 0.1 mg/kg and safety period of 14 days), cotton (leaf application, MRL of 0.2 mg/kg and safety period of 14 days), cotton (seeds application, MRL of 0.2 mg/kg and safety period not determined), garlic (leaf application, MRL of 5.0 mg/kg and safety period of 14 days), garlic (MRL of 5.0 mg/kg and safety period not determined), peanut (leaf application, MRL of 0.1 mg/kg and safety period of 7 days), peanut (seeds application, MRL of 0.1 mg/kg and safety period not determined), anthurium (not food use), rice (leaf application, MRL of 0.5 mg/kg and safety period of 7 days), banana (leaf application, MRL of 0.5 mg/kg and safety period of 14 days), potato (seeds application, MRL of 0.1 mg/kg and safety period not determined), begonia (not food use), eggplant (leaf application, MRL of 0.05 mg/kg and safety period of 14 days), coffee (leaf application, MRL of 0.03 mg/kg and safety period of 28 days), onion (leaf application, MRL of 0.1 mg/kg and safety period of 7 days), barley (seeds application, MRL of 0.01 mg/kg and safety period not determined), citrus (leaf application, MRL of 5.0 mg/kg and safety period of 14 days), clove (not food use), chrysanthemum (not food use), pea (leaf application, MRL of 0.1 mg/kg and safety period of 14 days), bean (leaf application, MRL of 2.0 mg/kg and safety period of 14 days), bean (seeds application, MRL of 2.0 mg/kg and safety period not determined), gladiolus (not food use), hydrangea (not food use), apple (leaf application, MRL of 0.5 mg/kg and safety period of 7 days), papaya (leaf application, MRL of 0.5 mg/kg and safety period of 3 days), mango (leaf application, MRL of 2.0 mg/kg and safety period of 14 days), watermelon (leaf application, MRL of 0.3 mg/kg and safety period of 13 days), melon (leaf application, MRL of 0.5 mg/kg and safety period of 14 days), corn (leaf application, MRL of 2.0 mg/kg and safety period of 3 days), corn (seeds application, MRL of 2.0 mg/kg and safety period not determined), strawberry (leaf application, MRL of 0.5 mg/kg and safety period of 14 days), orchid (not food use), physic nut (not food use), cucumber (leaf application, MRL of 0.2 mg/kg and safety period of 7 days), rose (not food use), rubber (not food use), soybean (leaf application, MRL of 0.5 mg/kg and safety period of 21 days), soybean (seeds application, MRL of 0.5 mg/kg and safety period not determined), sorghum (seeds application, MRL of 0.01 mg/kg and safety period not determined), tomato (leaf application, MRL of 0.2 mg/kg and safety period of 14 days), wheat (leaf application, MRL of 0.1 mg/kg and safety period of 14 days), wheat (seeds application, MRL of 0.1 mg/kg and safety period not	Active ingredient T14 - Thiophanate-methyl	G/SPS/N/BRA/840

Member	Partner affected	Notif. req.	Initiation/ notification	In force	Measure description	Product description	Source
					determined), and grape (leaf application, MRL of 0.7 mg/kg and safety period of 14 days).		
Brazil	All Members	SPS	29-Oct-12		Draft Resolution n° 59 of 4 October 2012 Draft Resolution for the active ingredient Zeta-Cypermethrin to be included in the monograph list of active ingredients of pesticides, household sanitizing products and wood preservers, including the use in the cultures of cotton (MRL of 0.05 mg/kg and safety period of 15 days), rice (MRL of 0.05 mg/kg and safety period of 7 days), potato (MRL of 0.02 mg/kg and safety period of 7 days), coffee (MRL of 0.05 mg/kg and safety period of 15 days), onion (MRL of 0.05 mg/kg and safety period of 5 days), cabbage (MRL of 2.0 mg/kg and safety period of 7 days), bean (MRL of 0.02 mg/kg and safety period of 15 days), cassava (MRL of 0.02 mg/kg and safety period of 7 days), millet (MRL of 0.05 mg/kg and safety period of 20 days), corn (MRL of 0.05 mg/kg and safety period of 15 days), wheat (MRL of 0.3 mg/kg and safety period of 15 days), tomato (MRL of 0.05 mg/kg and safety period of 5 days) and grape (MRL of 0.05 mg/kg and safety period of 15 days). All the cultures in leaf application.	Active ingredient Z60 - Zeta-Cypermethrin	G/SPS/N/BRA/841
Brazil	All Members	SPS	29-Oct-12		Draft Resolution n° 54 of 4 October 2012 Draft Resolution for the active ingredient Chlorantraniliprole to be included in the monograph list of active ingredients of pesticides, household sanitizing products and wood preservers, including the cultures of cotton (leaf application, MRL of 0.2 mg/kg and safety period of 14 days), cotton (soil application, MRL of 0.2 mg/kg and safety period not determined), rice (leaf application, MRL of 0.2 mg/kg and safety period of 15 days), oatmeal (leaf application, MRL of 0.3 mg/kg and safety period of 10 days), potato (leaf application, MRL of 0.01 mg/kg and safety period of 1 day), broccoli (leaf application, MRL of 0.7 mg/kg and safety period of 1 day), coffee (leaf application, MRL of 0.03 mg/kg and safety period of 21 days), coffee (soil application, MRL of 0.03 mg/kg and safety period of 35 days), sugar cane (leaf application, MRL of 0.2 mg/kg and safety period of 60 days), sugar cane (soil application, MRL of 0.2 mg/kg and safety period not determined), barley (leaf application, MRL of 0.4 mg/kg and safety period of 10 days), citrus (leaf application, MRL of 0.2 mg/kg and safety period of 5 days), citrus (soil application, MRL of 0.2 mg/kg and safety period not determined), cabbage (leaf application, MRL of 0.7 mg/kg and safety period of 1 day), cauliflower (leaf application, MRL of 0.7 mg/kg and safety period of 1 day), bean (leaf application, MRL of 0.05 mg/kg and safety period of 7 days), sunflower (leaf application, MRL of 0.02 mg/kg and safety period of 21 days), apple (leaf application, MRL of 0.1 mg/kg and safety period of 14 days), melon (leaf application, MRL of 0.2 mg/kg and safety period of 7 days), corn (leaf application, MRL of 0.07 mg/kg and safety period of 14 days), corn (soil application, MRL of 0.07 mg/kg and safety period not determined), cucumber (leaf application, MRL of 0.3 mg/kg and	Active ingredient C70 - Chlorantraniliprole	G/SPS/N/BRA/842

Member	Partner affected	Notif. req.	Initiation/ notification	In force	Measure description	Product description	Source
					safety period of 1 day), peach (leaf application, MRL of 0.1 mg/kg and safety period of 14 days), kohlrabi (leaf application, MRL of 0.7 mg/kg and safety period of 1 day), soybean (leaf application, MRL of 0.2 mg/kg and safety period of 21 days), soybean (soil application, MRL of 0.2 mg/kg and safety period not determined), tomato (leaf application, MRL of 0.3 mg/kg and safety period of 1 day) and wheat (leaf application, MRL of 0.1 mg/kg and safety period of 10 days).		
Brazil	All Members	SPS	29-Oct-12		Draft Resolution n° 56 of 4 October 2012 Draft Resolution for the active ingredient Fipronil to be included in the monograph list of active ingredients of pesticides, household sanitizing products and wood preservers, including the use in the cultures of cotton (leaf application, MRL of 0.01 mg/kg and safety period of 30 days), cotton (seeds application, MRL of 0.01 mg/kg and safety period not determined), peanut (seeds application, MRL of 0.01 mg/kg and safety period not determined), rice (leaf application, MRL of 0.01 mg/kg and safety period of 30 days), rice (seeds application, MRL of 0.01 mg/kg and safety period not determined), potato (soil application, MRL of 0.05 mg/kg and safety period not determined), sugar cane (soil application, MRL of 0.03 mg/kg and safety period not determined), barley (seeds application, MRL of 0.01 mg/kg and safety period not determined), eucalyptus (not food use), bean (seeds application, MRL of 0.01 mg/kg and safety period not determined), corn (seeds and soil application, MRL of 0.01 mg/kg and safety period not determined), pastures (seeds application, MRL of 0.1 mg/kg and safety period not determined), sorghum (seeds application, MRL of 0.005 mg/kg and safety period not determined), soybean (leaf application, MRL of 0.01 mg/kg and safety period of 60 days), soybean (seeds application, MRL of 0.01 mg/kg and safety period not determined) and wheat (seeds application, MRL of 0.01 mg/kg and safety period not determined).	Active ingredient F43 - Fipronil	G/SPS/N/BRA/843
Brazil	All Members	SPS	29-Oct-12		Draft resolution n° 55 of 4 October 2012 Draft Resolution for the active ingredient Pyraclostrobin to be included in the monograph list of active ingredients of pesticides, household sanitizing products and wood preservers, including the use in the cultures of cotton (leaf application, MRL of 0.2 mg/kg and safety period of 7 days), cotton (seeds application, MRL of 0.2 mg/kg and safety period not determined), garlic (leaf application, MRL of 0.1 mg/kg and safety period of 7 days), peanut (leaf application, MRL of 0.1 mg/kg and safety period of 14 days), peanut (seeds application, MRL of 0.1 mg/kg and safety period not determined), oatmeal (leaf application, MRL of 1.0 mg/kg and safety period of 30 days), banana (leaf application, MRL of 0.5 mg/kg and safety period of 3 days), potato (leaf application, MRL of 0.01 mg/kg and safety period of 3 days), potato (juice planting application, MRL of 0.01 mg/kg and safety period not determined), coffee (leaf application, MRL of 0.5 mg/kg and safety period of 45 days), sugar cane (leaf application, MRL of 0.1 mg/kg and safety period of 30 days), sugar cane (planting	Active ingredient P46 - Pyraclostrobin	G/SPS/N/BRA/844

Member	Partner affected	Notif. req.	Initiation/ notification	In force	Measure description	Product description	Source
					application, MRL of 0.1 mg/kg and safety period not determined), onion (leaf application, MRL of 0.5 mg/kg and safety period of 7 days), carrot (leaf application, MRL of 0.2 mg/kg and safety period of 7 days), barley (leaf application, MRL of 1.0 mg/kg and safety period of 30 days), barley (seeds application, MRL of 1.0 mg/kg and safety period not determined), citrus (leaf application, MRL of 0.5 mg/kg and safety period of 14 days), chrysanthemum (not food use), eucalyptus (not food use), bean (leaf application, MRL of 0.1 mg/kg and safety period of 14 days), bean (seeds application, MRL of 0.1 mg/kg and safety period not determined), apple (leaf application, MRL of 2.0 mg/kg and safety period of 14 days), papaya (leaf application, MRL of 0.1 mg/kg and safety period of 7 days), mango (leaf application, MRL of 0.1 mg/kg and safety period of 7 days), watermelon (leaf application, MRL of 0.1 mg/kg and safety period of 7 days), melon (leaf application, MRL of 0.1 mg/kg and safety period of 7 days), corn (leaf application, MRL of 0.1 mg/kg and safety period of 45 days), corn (seeds application, MRL of 0.1 mg/kg and safety period not determined), cucumber (leaf application, MRL of 0.05 mg/kg and safety period of 7 days), pepper (leaf application, MRL of 1.0 mg/kg and safety period of 3 days), rose (not use food), soybean (leaf application, MRL of 0.1 mg/kg and safety period of 14 days), soybean (seeds application, MRL of 0.1 mg/kg and safety period not determined), sorghum (seeds application, MRL of 0.02 mg/kg and safety period not determined), tomato (leaf application, MRL of 0.2 mg/kg and safety period of 1 day), wheat (leaf application, MRL of 0.5 mg/kg and safety period of 30 days), wheat (seeds application, MRL of 0.5 mg/kg and safety period not determined) and grape (leaf application, MRL of 2.0 mg/kg and safety period of 7 days).		
Brazil	All Members	SPS	29-Oct-12		Draft Resolution n° 60 of 4 October 2012 Draft Resolution for the active ingredient Flumioxazin to be included in the monograph list of active ingredients of pesticides, household sanitizing products and wood preservers, including the use in the cultures of cotton (MRL of 0.05 mg/kg and safety period of 100 days), garlic (MRL of 0.05 mg/kg and safety period of 100 days), potato (MRL of 0.05 mg/kg and safety period of 75 days), coffee (MRL of 0.05 mg/kg and safety period of 7 days), sugar cane (MRL of 0.05 mg/kg and safety period of 180 days), onion (MRL of 0.05 mg/kg and safety period of 90 days), citrus (MRL of 0.05 mg/kg and safety period of 7 days), eucalyptus (not food use), bean (MRL of 0.05 mg/kg and safety period of 7 days), cassava (MRL of 0.05 mg/kg and safety period of 75 days), corn (MRL of 0.05 mg/kg and safety period of 80 days), pinus (not food use) and soybean (MRL of 0.1 mg/kg and safety period of 10 days).	Active ingredient F46 - Flumioxazin	G/SPS/N/BRA/845
United States of America	All Members	SPS	08-Oct-12	28-Sep-12	Sulfoxaflor; Pesticide Tolerances for Emergency Exemptions This regulation establishes time-limited tolerances for residues of sulfoxaflor, N-methyloxido [1-[6-(trifluoromethyl)-3-	Cotton	G/SPS/N/USA/2476

Member	Partner affected	Notif. req.	Initiation/ notification	In force	Measure description	Product description	Source
					pyridinyl]ethyl] [lambda]\4\sulfanylidene] cyanamide, including its metabolites and degradates in or on cotton, undelinted seed; cotton, gin by-products; and cotton, hulls.		
United States of America	All Members	SPS	10-Sep-12	15-Aug-12	Flutriafof; Pesticide Tolerances for Emergency Exemptions This regulation establishes time-limited tolerances for residues of flutriafof in or on cotton, undelinted seed; cotton, meal; cotton, refined oil; and cotton gin by-products. This action is in response to EPA's granting of an emergency exemption under section 18 of the Federal Insecticide, Fungicide, and Rodenticide Act (FIFRA) authorizing use of the pesticide on cotton. This regulation establishes a maximum permissible level for residues of flutriafof in or on cotton commodities. The time-limited tolerances expire on 31 December 2014.	Cotton	G/SPS/N/USA/2451
China	All Members	TBT	23-Jul-12		Administrative Measures on Inspection and Supervision of Imported Cotton(9 pages, in Chinese) These Measures specify the administrative measures of inspection and supervision on the quality of imported cotton.	Imported cotton HS F5201000010 A5201000090	G/TBT/N/CHN/925
Peru	India	SPS	19-Jul-12	19-Oct-11	Resolución Directoral Nº 34-2011-AG-SENASA-DSV (Directorial Resolution No. 34-2011-AG-SENASA-DSV) The notified Directorial Resolution lifts the phytosanitary measures suspending the issue of phytosanitary import permits for cotton (Gossypium spp.) fibre, not carded or combed, originating in and coming from India.	HS tariff subheadings 5201.00.90.00, 5201.00.30.00, 5201.00.20.00 and 5201.00.10.00: Cotton fibre, not carded or combed.	G/SPS/N/PER/422
Peru	India	SPS	19-Jul-12	17-May-12	Resolución Directoral Nº 0012-2012-AG-SENASA-DSV (Directorial Resolution No. 0012-2012-AG-SENASA-DSV) The notified Directorial Resolution establishes the mandatory phytosanitary requirements governing the importation into Peru of cotton comber waste from India.	HS tariff subheading 5202.99.00.00: Cotton comber waste.	G/SPS/N/PER/428
China	All Members	TBT	18-Jul-12		National Standard of the P.R.C., Cotton Part1: Saw Ginned Upland Cotton i23 pages Cin Chinese j This standard specifies the quality requirements, classification criteria, test methods, inspection rules, inspection certificates, packages and marks, storage and transportation requirements etc. for saw ginned upland cotton. This standard applies to saw ginned upland cotton produced, purchased, processed, traded, stored and used in China.	Cotton-upland cotton ICS: 59.060.10	G/TBT/N/CHN/921
China	All Members	TBT	18-Jul-12		National Standard of the P.R.C., Cotton Part 2: Roller Ginned Upland Cotton i18 pages Cin Chinese j This standard specifies the quality requirements, classification criteria, test methods, inspection rules, inspection certificates, packages and marks, storage and transportation requirements etc. for roller ginned upland cotton. This standard applies to roller ginned upland cotton produced, purchased, processed, traded, stored and used in China.	Cotton-upland cotton ICS: 59.060.10	G/TBT/N/CHN/922
Brazil	All Members	SPS	15-Jun-12	06-Aug-12	Draft Resolution on Azadirachtin This draft sanitary regulation modifies Resolution RE nº165, 29 August 2003, by including in it the use of azadirachtin in the cultures of cotton, corn, soy and grape (Leaf application, LMR and safety period without restrictions).	Azadirachtin	G/SPS/N/BRA/814

Member	Partner affected	Notif. req.	Initiation/ notification	In force	Measure description	Product description	Source
United States of America	All Members	SPS	15-Jun-12		Methyl Bromide; Proposed Pesticide Tolerance A tolerance is proposed for residues of methyl bromide in cottonseed at 150 ppm.	Cotton, undelinted seed	G/SPS/N/USA/2396
United States of America	All Members	SPS	11-Jun-12		Aldicarb; Cancellation Order for Amendments To Terminate Uses This notice announces EPA's order for the amendment to terminate uses, voluntarily requested by the registrant and accepted by the Agency, of products containing aldicarb, pursuant to section 6(f)(1) of the Federal Insecticide, Fungicide, and Rodenticide Act (FIFRA), as amended. This cancellation order follows an 7 October 2010 Federal Register Notice of Receipt of Request from the registrant, Bayer CropScience to voluntarily amend to terminate uses of the product, TEMIK[supreg] Brand 15G, containing aldicarb on citrus and potatoes effective immediately. The registrant also requested that EPA amend to terminate the remaining pesticide uses of this product on cotton, dry beans, peanuts, soybeans, sugar beets, and sweet potatoes, effective as of December 31, 2014. These are not the last products containing aldicarb registered for use in the United States of America. In the 7 October 2010 notice, EPA indicated that it would issue an order implementing the amendments to terminate uses, unless the Agency received substantive comments within the 30-day comment period that would merit its further review of these requests, or unless the registrant withdrew their requests. The Agency received comments on the notice but none merited its further review of the requests. Further, the registrant did not withdraw their requests. Accordingly, EPA hereby issues in this notice a cancellation order granting the requested amendments to terminate uses. Any distribution, sale, or use of the products subject to this cancellation order is permitted only in accordance with the terms of this order, including any existing stocks provisions.	Multiple products	G/SPS/N/USA/2386
United States of America	All Members	SPS	08-Jun-12	14-May-12	Penflufen; Pesticide Tolerances Tolerances are established for residues of the fungicide penflufen, including its metabolites and degradates, in or on the following commodities listed in the table. Compliance with the tolerance levels specified in the table is to be determined by measuring only penflufen N-[2-(1,3-dimethylbutyl)phenyl]-5-fluoro-1,3-dimethyl-1H-pyrazole-4-carboxamide, in or on the following commodities. <u>Commodity</u> Alfalfa, forage 0.01 Alfalfa, hay 0.01 Cotton, gin by-products 0.01 Grain cereal, forage, fodder and straw, group 16 0.01 Grain, cereal, group 15 0.01 Oilseed, group 20 0.01 Vegetable, foliage of legume, group 7 0.01 Vegetable, legume, group 6 0.01	Multiple commodities	G/SPS/N/USA/2382

Member	Partner affected	Notif. req.	Initiation/ notification	In force	Measure description	Product description	Source
					Vegetable, tuberous and corm subgroup 1C	0.01	
United States of America	All Members	SPS	08-Jun-12	14-May-12	<p>Fluxapyroxad; Pesticide Tolerances Tolerances are established for residues of the fungicide fluxapyroxad, including its metabolites and degradates, in or on the commodities listed in the table below. Compliance with the tolerance levels specified below is to be determined by measuring only fluxapyroxad, 3-(difluoromethyl)-1-methyl-N-(3',4',5'-trifluoro[1,1'-biphenyl]-2-yl)-1H-pyrazole-4-carboxamide in or on the commodity.</p> <p><u>Commodity</u></p> <p><u>Parts per million</u></p> <p>Apple, wet pomace 2.0</p> <p>Beet, sugar 0.1</p> <p>Beet, sugar, dried pulp 0.1</p> <p>Beet, sugar, tops 7.0</p> <p>Cattle, fat 0.05</p> <p>Cattle, meat 0.01</p> <p>Cattle, meat by-products 0.03</p> <p>Corn, field, grain 0.01</p> <p>Corn, oil 0.03</p> <p>Corn, pop, grain 0.01</p> <p>Corn, sweet, kernels plus cobs with husks removed 0.15</p> <p>Cotton, gin by-products 0.01</p> <p>Cotton, undelinted seed 0.01</p> <p>Egg 0.002</p> <p>Fruit, pome, group 11 0.8</p> <p>Fruit, stone, group 12 2.0</p> <p>Goat, fat 0.05</p> <p>Goat, meat 0.01</p> <p>Goat, meat by-products 0.03</p> <p>Grain, aspirated fractions 20.0</p> <p>Grain, cereal, group 15, (except corn, field, grain; except corn, pop, grain; except corn, kernels plus cobs with husks removed; except wheat) 3.0</p> <p>Grain, cereal, forage, fodder and straw, group 16 20</p> <p>Horse, fat 0.05</p> <p>Horse, meat 0.01</p> <p>Horse, meat by-products 0.03</p> <p>Milk 0.005</p> <p>Oilseeds, group 20 0.9</p> <p>Pea and bean, dried shelled except soybean, subgroup 6C 0.4</p> <p>Pea and bean, succulent shelled, subgroup 6B 0.5</p> <p>Peanut 0.01</p> <p>Peanut, refined oil 0.02</p> <p>Plum, prune 3.0</p> <p>Potato, wet peel 0.1</p> <p>Rice, bran 4.5</p>	Multiple commodities	G/SPS/N/USA/2383

Member	Partner affected	Notif. req.	Initiation/ notification	In force	Measure description	Product description	Source
					Rice, hulls 8.0 Sheep, fat 0.05 Sheep, meat 0.01 Sheep, meat by-products 0.03 Soybean, hulls 0.3 Soybean, seed 0.15 Vegetable, foliage of legume, group 7 30 Vegetables, fruiting, group 8 0.7 Vegetable, legume, edible podded, subgroup 6A 2.0 Vegetable, tuberous and corm, subgroup 1C 0.02 Wheat, bran 0.6 Wheat, grain 0.3		
Peru	United States of America	CV	02-Jun-12		Countervailing	Cotton	G/SCM/N/242/PER, G/SCM/N/250/PER
Canada	All Members	SPS	11-May-12		Proposed Maximum Residue Limit: Fluxapyroxad (PMRL2012-29) The objective of the notified document PMRL2012-29 is to consult on the listed domestic maximum residue limits (MRLs) for fluxapyroxad that have been proposed by Health Canada's Pest Management Regulatory Agency (PMRA). <u>MRL (ppm)</u> <u>Raw Agricultural Commodity (RAC) and/or Processed Commodity</u> 4.5 Rice bran 3.0 Cereal grains (Crop Group 15, except wheat & corn), dried prune plums 2.0 Edible-podded legume vegetables (Crop Subgroup 6A), stone fruits (Crop Group 12-09) 0.9 Oilseeds (Crop Group 20, except cotton seeds) 0.8 Pome fruits (Crop Group 11-09) 0.7 Fruiting vegetables (Crop Group 8-09) 0.6 Wheat bran 0.5 Succulent shelled pea and bean (Crop Subgroup 6B) 0.4 Dried shelled pea and bean, except soybean (Crop Subgroup 6C) 0.3 Wheat0.15 Dry soybeans; sweet corn kernels plus cob with husks removed 0.1 Sugar beet roots 0.05 Fat of cattle, goats, horses and sheep 0.03 Corn oil; meat by-products (except kidney) of cattle, goats, horses and sheep 0.02 Tuberous and corm vegetables (Crop Subgroup 1C); peanut oil 0.01 Fat, meat and meat by-products of hogs and poultry; kidney and meat of cattle, goats, horses and sheep; field corn; peanuts; popcorn grain; undelinted cotton seeds 0.005 Milk 0.002 Eggs	Pesticide Fluxapyroxad in or on various food commodities (ICS Codes: 65.020, 65.100, 67.040)	G/SPS/N/CAN/598, G/SPS/N/CAN/598/Add.1

Member	Partner affected	Notif. req.	Initiation/ notification	In force	Measure description	Product description	Source																																																										
					MRLs are proposed for each commodity included in the listed crop groupings in accordance with the Residue Chemistry Crop Groups webpage (http://www.hc-sc.gc.ca/cps-spc/pest/part/protect-proteger/food-nourriture/rccg-qcpcr-eng.php) in the Pesticides and Pest Management section of Health Canada's website.																																																												
United States of America	All Members	SPS	10-May-12	02-Mar-12	<p>Thiamethoxam; Pesticide Tolerances This regulation establishes tolerances for residues of thiamethoxam in or on multiple commodities. (a) General. Tolerances are established for residues of the insecticide thiamethoxam, including its metabolites and degradates, in or on the following commodities. Compliance with the tolerance levels specified below is to be determined by measuring only thiamethoxam 3-[(2-chloro-5-thiazolyl)methyl]tetrahydro-5-methyl-N-nitro-4H-1,3,5-oxadiazin-4-imine and its metabolite CGA-322704 N-[(2-chloro-thiazol-5-yl)methyl]-N'-methyl-N''-nitro-guanidine, calculated as the stoichiometric equivalent of thiamethoxam, in or on the following commodities:</p> <table border="0"> <thead> <tr> <th><u>Commodity</u></th> <th><u>Parts per million</u></th> </tr> </thead> <tbody> <tr><td>Alfalfa, forage</td><td>0.05</td></tr> <tr><td>Alfalfa, hay</td><td>0.12</td></tr> <tr><td>Almond, hulls</td><td>1.2</td></tr> <tr><td>Artichoke, globe</td><td>0.45</td></tr> <tr><td>Avocado</td><td>0.40</td></tr> <tr><td>Barley, grain</td><td>0.4</td></tr> <tr><td>Barley, hay</td><td>0.40</td></tr> <tr><td>Barley, straw</td><td>0.40</td></tr> <tr><td>Bean, succulent</td><td>0.02</td></tr> <tr><td>Berry, low growing, subgroup 13-07G, except cranberry</td><td>0.30</td></tr> <tr><td>Borage, seed</td><td>0.02</td></tr> <tr><td>Brassica, head and stem, subgroup 5-A</td><td>4.5</td></tr> <tr><td>Brassica, leafy greens, subgroup 5-B</td><td>3.0</td></tr> <tr><td>Buckwheat, forage</td><td>0.50</td></tr> <tr><td>Buckwheat, hay</td><td>0.02</td></tr> <tr><td>Buckwheat, straw</td><td>0.02</td></tr> <tr><td>Bushberry subgroup 13-07B, except lingonberry and blueberry, lowbush</td><td>0.20</td></tr> <tr><td>Canistel</td><td>0.40</td></tr> <tr><td>Canola, seed</td><td>0.02</td></tr> <tr><td>Cattle, meat</td><td>0.02</td></tr> <tr><td>Cattle, meat by-products</td><td>0.04</td></tr> <tr><td>Citrus, dried pulp</td><td>0.60</td></tr> <tr><td>Coffee, bean, green \1\</td><td>0.05</td></tr> <tr><td>Corn, field, forage</td><td>0.10</td></tr> <tr><td>Corn, field, stover</td><td>0.05</td></tr> <tr><td>Corn, pop, forage</td><td>0.10</td></tr> <tr><td>Corn, pop, stover</td><td>0.05</td></tr> <tr><td>Corn, sweet, forage</td><td>0.10</td></tr> </tbody> </table>	<u>Commodity</u>	<u>Parts per million</u>	Alfalfa, forage	0.05	Alfalfa, hay	0.12	Almond, hulls	1.2	Artichoke, globe	0.45	Avocado	0.40	Barley, grain	0.4	Barley, hay	0.40	Barley, straw	0.40	Bean, succulent	0.02	Berry, low growing, subgroup 13-07G, except cranberry	0.30	Borage, seed	0.02	Brassica, head and stem, subgroup 5-A	4.5	Brassica, leafy greens, subgroup 5-B	3.0	Buckwheat, forage	0.50	Buckwheat, hay	0.02	Buckwheat, straw	0.02	Bushberry subgroup 13-07B, except lingonberry and blueberry, lowbush	0.20	Canistel	0.40	Canola, seed	0.02	Cattle, meat	0.02	Cattle, meat by-products	0.04	Citrus, dried pulp	0.60	Coffee, bean, green \1\	0.05	Corn, field, forage	0.10	Corn, field, stover	0.05	Corn, pop, forage	0.10	Corn, pop, stover	0.05	Corn, sweet, forage	0.10	Multiple	G/SPS/N/USA/2362
<u>Commodity</u>	<u>Parts per million</u>																																																																
Alfalfa, forage	0.05																																																																
Alfalfa, hay	0.12																																																																
Almond, hulls	1.2																																																																
Artichoke, globe	0.45																																																																
Avocado	0.40																																																																
Barley, grain	0.4																																																																
Barley, hay	0.40																																																																
Barley, straw	0.40																																																																
Bean, succulent	0.02																																																																
Berry, low growing, subgroup 13-07G, except cranberry	0.30																																																																
Borage, seed	0.02																																																																
Brassica, head and stem, subgroup 5-A	4.5																																																																
Brassica, leafy greens, subgroup 5-B	3.0																																																																
Buckwheat, forage	0.50																																																																
Buckwheat, hay	0.02																																																																
Buckwheat, straw	0.02																																																																
Bushberry subgroup 13-07B, except lingonberry and blueberry, lowbush	0.20																																																																
Canistel	0.40																																																																
Canola, seed	0.02																																																																
Cattle, meat	0.02																																																																
Cattle, meat by-products	0.04																																																																
Citrus, dried pulp	0.60																																																																
Coffee, bean, green \1\	0.05																																																																
Corn, field, forage	0.10																																																																
Corn, field, stover	0.05																																																																
Corn, pop, forage	0.10																																																																
Corn, pop, stover	0.05																																																																
Corn, sweet, forage	0.10																																																																

Member	Partner affected	Notif. req.	Initiation/ notification	In force	Measure description	Product description	Source
					Corn, sweet, kernel plus cob with husks removed	0.02	
					Corn, sweet, stover	0.05	
					Cotton, gin by-products	1.5	
					Cotton, undelinted seed	0.10	
					Crambe, seed	0.02	
					Cranberry	0.02	
					Flax, seed	0.02	
					Food commodities and feed commodities (other than those covered by a higher tolerance as a result of use on growing crops) in food/feed handling establishments	0.02	
					Fruit, citrus, group 10	0.40	
					Fruit, pome, group 11	0.2	
					Fruit, small, vine climbing, subgroup 13-07F, except fuzzy		
					Kiwifruit	0.20	
					Fruit, stone, group 12	0.5	
					Goat, meat	0.02	
					Goat, meat by-products	0.04	
					Grain, aspirated fractions	2.0	
					Grain, cereal, group 15, except barley	0.02	
					Grape, raisin	0.30	
					Hog, meat	0.02	
					Hog, meat by-products	0.02	
					Hop, dried cones	0.10	
					Horse, meat	0.02	
					Horse, meat by-products	0.04	
					Mango	0.40	
					Milk	0.02	
					Millet, pearl, forage	0.02	
					Millet, pearl, stover	0.02	
					Millet, proso, forage	0.02	
					Millet, proso, stover	0.02	
					Millet, proso, straw	0.02	
					Oat, forage	0.50	
					Oat, hay	0.02	
					Oat, straw	0.02	
					Peanut	0.05	
					Peanut, hay	0.25	
					Peanut, meal	0.15	
					Peppermint, tops	1.5	
					Pistachio	0.02	
					Potato	0.25	
					Radish, tops	0.80	
					Rapeseed, seed	0.02	
					Rye, forage	0.50	
					Rye, straw	0.02	
					Sapodilla	0.40	

Member	Partner affected	Notif. req.	Initiation/ notification	In force	Measure description	Product description	Source
					Sapote, black 0.40 Sapote, mamey 0.40 Sheep, meat 0.02 Sheep, meat by-products 0.04 Sorghum, forage 0.02 Sorghum, grain, stover 0.02 Soybean, hulls 0.08 Spearmint, tops 1.5 Star apple 0.40 Sunflower 0.02 Tomato, paste 0.80 Vegetable, cucurbit, group 9 0.2 Vegetable, fruiting, group 8 0.25 Vegetable, leafy, except brassica, group 4 4.0 Vegetable, legume, group 6 0.02 Vegetable, root, subgroup 1A 0.05 Vegetable, tuberous and corm, except potato, subgroup 1D 0.02 Wheat, forage 0.50 Wheat, hay 0.02 Wheat, straw 0.02		
United States of America	All Members	SPS	02-May-12	06-Aug-12	Notice of Receipt of Requests for Amendments To Delete Uses in Certain Pesticide Registrations EPA is issuing a notice of receipt of request for amendments by registrants to delete uses in certain pesticide registrations for Buctril Herbicide (active ingredient Bromoxynil) on BTX cotton.	Cotton	G/SPS/N/USA/2359, G/SPS/N/USA/2359/Corr.1

ANNEX 1**NOTES ON TARIFF RATE QUOTA COMMITMENTS FROM CHINA'S SCHEDULE**

1. Tariff quotas indicated in the third column are volumes for calendar year 2001. Tariff quota concessions will be implemented according to the date specified in the "implementation" column. The implementation column indicates the date (referring to 1 January of the year indicated) when the final quota quantity will be achieved. The tariff quota concessions are subject to equal annual adjustments (occurring on 1 January of each year), unless otherwise specified in the last column ("Other terms and conditions").
2. The People's Republic of China (hereinafter referred to as "China") shall maintain its in-quota applied and bound rates (and, upon removal of the tariff-quota, its applied and bound rates) for HS 1514 (rape or colza (canola) oil and its fractions, whether or not refined, but not chemically modified) at a level equal to that for HS 1507 (soya-bean oil and its fractions, whether or not refined, but not chemically modified) and for HS 1205 (rape or colza (canola) seeds, whether or not broken).
3. The growth rate for the TRQ volume for canola (rapeseed) oil shall be no less than the growth rate for the TRQ volume for soybean oil.
4. An entity granted a tariff quota allocation (quota-holder) may engage in importation through state-trading enterprises and/or through entities possessing the right to trade other than state-trading enterprises, including direct importation by the quota holder, as indicated on documentation issued with the allocation or reallocation of the tariff quota quantities.
5. Application: All applications for an allocation of the tariff-quota will be submitted to the State Development and Planning Commission (SDPC). Specific conditions for applying for a tariff-quota allocation will be published in the official journal one month in advance of the application period, which will be from 15 October to 30 October.
6. Allocation:
 - a. The entire tariff-quota quantity established in Section I-B shall be allocated to end users by 1 January each year. Inquiries regarding tariff-quota allocations can be made to the SDPC, with responses provided within 10 working days. Any additional requirement for importation will be automatic under the terms of the Agreement on Import Licensing Procedures. China shall equitably distribute allocations within each portion of the tariff-quota to ensure complete tariff-quota utilization and to establish a tariff-quota system that is open, transparent, fair, responsive to market conditions, timely, minimally burdensome to trade and reflects end user preferences.
 - b. In the first year, allocations to end users by the SDPC of the tariff-quota reserved for importation through state-trading enterprises shall be based on a first-come, first-served system or the requests of the applicants and their historical import performance, production capacity, or other relevant commercial criteria, subject to specific conditions to be published one month in advance of the opening of the application period so as to ensure an equitable distribution and complete tariff-quota utilization. In the first year, no less than 10 % of the tariff-quota reserved for importation through state-trading enterprises will be allocated to new quota-holders.
 - c. In the first year, allocations to end users by the SDPC of the tariff-quota reserved for importation through entities other than state-trading enterprises shall be based on a first-come, first-served system or the requests of the applicants and their historical import performance, production capacity, or other relevant commercial criteria. No less than 10% of the tariff-quota reserved for importation through entities other than state-trading enterprises will be allocated to new quota-holders. This tariff-quota will be limited to entities that do not receive any special or exclusive rights or privileges, and will include allocations to joint ventures, wholly foreign-funded enterprises, and private enterprises.
 - d. Except in cases where tariff-quota is allocated on a first-come, first-served basis, and in accordance with China's Schedule of Concessions and Commitments on Goods, a quota-holder that has imported under a tariff-quota shall, upon application, receive an allocation

of the tariff-quota in the following year for a quantity no less than the quantity imported the previous year. For all methods of allocation, a quota-holder that does not import its full allocation under a tariff-quota will receive a proportional reduction in the tariff-quota allocation in the subsequent year unless the quantity is returned to the SDPC prior to 15 September. A quota holder that has failed to import its full allocation in two consecutive years and has returned that unused portion by 15 September shall have its quota allocated in the following year on the basis of its fill rate in the most recent year, and will not benefit from any additional reallocations until and unless there are no other applications. The means of calculating the penalty will be included in the TRQ regulation in force and publicly available, and will be applied in a consistent and equitable manner.

- e. Allocations will be established for commercially viable shipping quantities and provisions will be made for partial shipments against a single tariff-quota allocation. All commercial terms of trade, including product specification, pricing, packaging, etc., will be at the sole determination of the importer and the exporter taking into full account the demands of the end user. Tariff-quota allocations will be valid for any item or mixture of items subject to the same tariff-quota.
 - f. Inquiries on the entities which received the allocation can be made to the SDPC which shall provide the information within 10 days.
7. Term: The tariff-quota for each product will be opened on 1 January each year, unless otherwise specified in the Schedule. Tariff-quota allocations will be valid for the calendar year.
8. Reallocation:
- a. In any year, if a quota-holder has not contracted for the total quantity by 15 September, it shall return the unused portion of the tariff-quota quantity to the SDPC for reallocation.
 - b. Applications for reallocation of the tariff-quota will be accepted by the SDPC from 1 September to 15 September and new allocations shall be assigned by 1 October. Specific conditions for applying for reallocation of tariff quotas will be published in the official journal one month in advance of the application period. Such allocations, which shall be to new applicants and to entities other than those returning quotas under sub-paragraph 8.A. above, will be assigned on a first-come, first-served basis. Quota-holders allocated a share of the tariff-quota reserved for importation through entities other than state-trading enterprises may import through any entity that has a right to trade in any product as specified in Section 5 of China's Protocol of Accession.
 - c. Inquiries on the entities which received the reallocations can be made to the SDPC which will provide the information within 10 days.
 - d. In situations where goods have been shipped from their port of origin before 31 December of any year, but are entered after 31 December of that year, China shall extend the validity of the tariff quota documents and shall count such shipments against the tariff quota allocation for the year in which the tariff quota was initially allocated.

Consultations:

9. With a view to maintaining a transparent and open tariff quota system, upon request from any WTO Member, China shall consult with the Member on the administration of the tariff quota to ensure that the tariff quota will be allocated in a transparent, equitable and non-discriminatory manner and that the tariff quota will be fully utilized.

Notes:

1. The share of the tariff-quota reserved for importation through state-trading enterprises is specified in column 7 of Section I-B. The remainder of the tariff-quota quantity is reserved for importation through any non-state trading enterprise possessing the right to trade in any product as set forth in Section 5 of China's Protocol of Accession.

In any year, if the quantity of the tariff-quota reserved for importation through state-trading enterprises has not been contracted for by 15 August, quota-holders will have the right to

trade or to import through any entity with the right to trade any product under Section 5 of China's Protocol of Accession.

2. China shall ensure that the applied duty for soybean oil, rapeseed oil, palm oil, peanut oil, cottonseed oil, sunflower seed oil, and corn oil is no greater than the applied duty for any one of these oils or for any other vegetable oil. Of the vegetable oils subject to tariff quota (i.e., soybean oil, rapeseed oil, and palm oil), if the tariff-quota for any one oil is autonomously increased, the tariff-quotas for the other two will be increased commensurately. Beginning 1 January 2006, China will remove soybean oil, rapeseed oil and palm oil from Annex 2A of the Protocol of Accession and will grant the right to trade such oils to all individuals and enterprises.
 3. All quota holders, that have already fully used or contracted their tariff-quota allocations in any year by 15 September shall also be eligible for reallocation of tariff-quota from other quota holders that have returned their allocations.
-

ANNEX 2

CHAPTER NOTES CONCERNING TRQ COMMITMENTS FOR COTTON FROM THE U.S. SCHEDULE

CHAPTER 52

COTTON

Additional U.S. Notes 1/

1. Under regulations prescribed by the Secretary of the Treasury, the staple length of cotton shall be determined for all customs purposes by application of the Official Cotton Standards of the United States of America for length of staple, as established by the Secretary of Agriculture and in effect when the determination is to be made.

5. There shall be permitted entry an aggregate quantity of cotton, entered under the provisions of additional U.S. notes 6 through 11, inclusive, to this chapter, of not less than the total quantity specified below.

	Quantity (metric tons)
1995	41,926.8
1996	48,850.4
1997	55,773.9
1998	62,697.5
1999	69,621.0
2000 and thereafter	76,544.6

An additional aggregate quantity of 10,000 metric tons is reserved for Mexico under this note.

The quantitative limitations established by this note may be administered through regulations (including licenses) issued by the Secretary of Agriculture.

1/ Note 1 and additional U.S. notes 2, 3 and 4 to this chapter are omitted from this section and are in section II of this schedule. Additional U.S. notes 5 through 11, inclusive, to this chapter are not in the Harmonized Tariff Schedule of the United States.

6. There shall be permitted entry an aggregate quantity of cotton, not carded or combed, having a staple length under 28.575 mm (1-1/8 inches) (except harsh or rough cotton, having a staple length under 19.05 mm (3/4 inch)), entered under subheading 5201.00.14 during the 12-month period beginning September 20 in any year, of not less than the total quantity specified below.

	Quantity (metric tons)
1995	8,495.05*
1996	10,837.45*
1997	13,179.85*
1998	15,522.25*
1999	17,864.65*
2000 and thereafter	20,207.05*

* Of the quantitative limitation provided for in this note, access levels are reserved as follows for entry under the provisions of this note:

	Quantity (kg)		Quantity (kg)
Egypt & Sudan (aggregate)	355,532	Honduras	341
Peru	112,469	Paraguay	395
India & Pakistan (aggregate)	908,764	Colombia	56
China	621,780	Iraq	88
Brazil	280,648	British East Africa	1,016
Union of Soviet Socialist Republics	215,512	Indonesia & Netherlands New Guinea (aggregate)	32,381
Argentina	2,360	British West Indies (except Barbados,	9,671

	Quantity (kg)		Quantity (kg)
		Bermuda, Jamaica, or Trinidad and Tobago)	
Haiti	107	Nigeria	2,438
Ecuador	4,233	British West Africa (except Nigeria and Ghana)	7,259

The quantitative limitations established by this note may be administered through regulations (including licenses and reallocation of unfilled quotas) issued by the Secretary of Agriculture.

7. There shall be permitted entry an aggregate quantity of harsh or rough cotton, not carded or combed, having a staple length of 29.36875 mm (1-5/32 inches) or more but under 34.925 mm (1-3/8 inches) and white in color (except cotton of perished staple, grabbots and cotton pickings), entered under subheading 5201.00.24 during the 12-month period beginning August 1 in any year, of not less than the total quantity specified below.

	Quantity (metric tons)
1995	900.0
1996	1,000.0
1997	1,100.0
1998	1,200.0
1999	1,300.0
2000 and thereafter	1,400.0

The quantitative limitations established by this note may be administered through regulations (including licenses) issued by the Secretary of Agriculture.

8. There shall be permitted entry an aggregate quantity of cotton, not carded or combed, having a staple length of 28.575 mm (1-1/8 inches) or more but under 34.925 mm (1-3/8 inches) (except harsh or rough cotton, not carded or combed, having a staple length of 29.36875 mm (1-5/32 inches) or more and white in color) but including cotton of perished staple, grabbots and cotton pickings, entered under subheading 5201.00.34 during the 12-month period beginning August 1 in any year, of not less than the total quantity specified below.

	Quantity (metric tons)
1995	5,200.0
1996	6,460.0
1997	7,720.0
1998	8,980.0
1999	10,240.0
2000 and thereafter	11,500.0

The quantitative limitations established by this note may be administered through regulations (including licenses) issued by the Secretary of Agriculture.

9. There shall be permitted entry an aggregate quantity of cotton, not carded or combed, having a staple length of 34.925 mm (1-3/8 inches) or more, entered under subheading 5201.00.60 during the 12-month period beginning August 1 in any year, of not less than the total quantity specified below.

	Quantity (metric tons)
1995	25,500.0
1996	28,420.0
1997	31,340.0
1998	34,260.0
1999	37,180.0
2000 and thereafter	40,100.0

The quantitative limitations established by this note may be administered through regulations (including licenses) issued by the Secretary of Agriculture.

10. There shall be permitted entry an aggregate quantity of card strips made from cotton having a staple length under 30.1625 mm (1-3/16 inches), and lap waste, sliver waste and roving waste of cotton, all the foregoing the product of any country or are including the United States of America, entered under subheading 5202.99.10 during the 12-month period beginning September 20 in any year, of not less than the total quantity specified below.

	Quantity (kg)
1995	1,835,427*
1996	2,135,427*
1997	2,435,427*
1998	2,735,427*
1999	3,035,427*
2000 and thereafter	3,335,427*

* Of the quantitative limitation provided for in this note, access levels are reserved as follows for entry under the provisions of this note:

	Quantity (kg)		Quantity (kg)
United Kingdom	653,695	Japan	154,917
Canada	108,721	China	7,857
France	34,385	Egypt	3,689
India & Pakistan (aggregate)	31,582	Cuba	2,968
Netherlands	10,317	Germany	11,540
Switzerland	6,711	Italy	3,215
Belgium	5,830		

The quantitative limitations established by this note may be administered through regulations (including licenses and reallocation of unfilled quotas) issued by the Secretary of Agriculture.

11. There shall be permitted entry an aggregate quantity of fibers of cotton processed but not spun, entered under subheading 5203.00.10 during the 12-month period beginning September 11 in any year, of not less than the total quantity specified below.

	Quantity (kg)
1995	1,000
1996	1,300
1997	1,600
1998	1,900
1999	2,200
2000 and thereafter	2,500

The quantitative limitations established by this note may be administered through regulations (including licenses) issued by the Secretary of Agriculture.

ANNEX 3**EXCERPT FROM ANNEX 1 TO G/AG/N/USA/2/ADD.3 AND G/AG/N/USA/34/ADD.1
NOTES FROM THE HARMONIZED TARIFF SYSTEM OF THE UNITED STATES****36/ Short staple cotton**

from Additional U.S. Note 5 to Chapter 52 of the HTSUS:

5. The aggregate quantity of cotton, not carded or combed, the product of any country or area including the United States of America, having a staple length under 28.575 mm (1-1/8 inches) (except harsh or rough cotton, having a staple length under 19.05 mm (3/4 inch)), entered under subheading 5201.00.14 during the 12-month periods from September 20, 1999, through September 19, 2000, inclusive, shall not exceed 17,864.65 metric tons or from September 20, 2000, through September 19, 2001, inclusive, shall not exceed 20,207.05 metric tons (articles the product of Mexico shall not be permitted or included in the aforementioned quantitative limitation and no such articles shall be classifiable therein).

Of the quantitative limitations provided for in this note, the countries listed below shall have access to not less than the quantities specified below:

	Quantity (kg)
Argentina	2,360
Brazil	280,648
British East Africa	1,016
British West Africa (except Nigeria and Ghana)	7,259
British West Indies (except Barbados, Bermuda, Jamaica, Trinidad, Tobago)	9,671
China	621,780
Colombia	56
Ecuador	4,233
Egypt & Sudan (aggregate)	355,532
Haiti	107
Honduras	341
India & Pakistan (aggregate)	908,764
Indonesia & Netherlands New Guinea (aggregate)	32,381
Iraq	88
Nigeria	2,438
Paraguay	395
Peru	112,469
Armenia, Azerbaijan, Belarus, Estonia, Georgia, Kazakhstan, Kyrgyzstan, Latvia, Lithuania, Moldova, Russia, Tajikistan, Turkmenistan, Ukraine and Uzbekistan (aggregate)	215,512

Other than as provided for in the country allocations above, articles the product of countries or areas who are not members of the World Trade Organization shall not be permitted or included in the quantitative limitations set forth in this note.

37/ Harsh or rough cotton

from Additional U.S. Note 6 to Chapter 52 of the HTSUS:

6. The aggregate quantity of harsh or rough cotton, not carded or combed, the product of any country or area including the United States of America, having a staple length of 29.36875 mm (1-5/32 inches) or more but under 34.925 mm (1-3/8 inches) and white in color (except cotton of perished staple, grabbots and cotton pickings), entered under subheading 5201.00.24 during the 12-month periods from August 1, 1999, through July 31, 2000, inclusive, shall not exceed 1,300.0 metric tons or from August 1, 2000, through July 31, 2001, inclusive, shall not exceed 1,400.0 metric tons (articles the product of Mexico shall not be permitted or included in the aforementioned quantitative limitation and no such articles shall be classifiable therein).

Articles the product of countries or areas who are not members of the World Trade Organization shall not be permitted or included in the quantitative limitations set forth in this note.

38/ Medium staple cotton

from Additional U.S. Note 7 to Chapter 52 of the HTSUS:

7. The aggregate quantity of cotton, not carded or combed, the product of any country or area including the United States of America, having a staple length of 28.575 mm (1-1/8 inches) or more but under 34.925 mm (1-3/8 inches) (except harsh or rough cotton, not carded or combed, having a staple length of 29.36875 mm (1-5/32 inches) or more and white in color) but including cotton of perished staple, grabbotts and cotton pickings, entered under subheading 5201.00.34 during the 12-month periods from August 1, 1999, through July 31, 2000, inclusive, shall not exceed 10,240.0 metric tons or from August 1, 2000, through July 31, 2001, inclusive, shall not exceed 11,500.0 metric tons (articles the product of Mexico shall not be permitted or included in the aforementioned quantitative limitation and no such articles shall be classifiable therein).

Articles the product of countries or areas who are not members of the World Trade Organization shall not be permitted or included in the quantitative limitations set forth in this note.

39/ Long staple cotton

from Additional U.S. Note 8 to Chapter 52:

8. The aggregate quantity of cotton, not carded or combed, the product of any country or area including the United States of America, having a staple length of 34.925 mm (1-3/8 inches) or more, entered under subheading 5201.00.60 during the 12-month periods from August 1, 1999, through July 31, 2000, inclusive, shall not exceed 37,180.0 metric tons or from August 1, 2000, through July 31, 2001, inclusive, shall not exceed 40,100.0 metric tons (articles the product of Mexico shall not be permitted or included in the aforementioned quantitative limitation and no such articles shall be classifiable therein).

Articles the product of countries or areas who are not members of the World Trade Organization shall not be permitted or included in the quantitative limitations set forth in this note.

40/ Cotton waste

from Additional U.S. Note 9 to Chapter 52 of the HTSUS:

9. The aggregate quantity of card strips made from cotton having a staple length under 30.1625 mm (1-3/16 inches), and lap waste, sliver waste and roving waste of cotton, all the foregoing the product of any country or area including the United States of America, entered under subheading 5202.99.10 during the 12-month periods from September 20, 1999, through September 19, 2000, inclusive, shall not exceed 3,035,427 kilograms or from September 20, 2000, through September 19, 2001, inclusive, shall not exceed 3,335,427 kilograms (articles the product of Mexico shall not be permitted or included in the aforementioned quantitative limitation and no such articles shall be classifiable therein).

Of the quantitative limitations provided for in this note, the countries listed below shall have access to not less than the quantities specified below:

	Quantity (kg)
Belgium	5,830
Canada	108,721
China	7,857
Cuba	2,968
Egypt	3,689
France	34,385
Germany	11,540
Italy	3,215
India & Pakistan (aggregate)	31,582
Japan	154,917
Netherlands	10,317
Switzerland	6,711
United Kingdom	653,695

Other than as provided for in the country allocations above, articles the product of countries or areas who are not members of the World Trade Organization shall not be permitted or included in the quantitative limitations set forth in this note.

41/ Cotton processed but not spun

from Additional U.S. Note 10 to Chapter 52 of the HTSUS:

10. The aggregate quantity of fibers of cotton processed but not spun, entered under subheading 5203.00.10 during the 12-month periods from September 11, 1999, through September 10, 2000, inclusive, shall not exceed 2,200 kilograms or from September 11, 2000, through September 10, 2001, inclusive, shall not exceed 2,500 kilograms (articles the product of Mexico shall not be permitted or included in the aforementioned quantitative limitation and no such articles shall be classifiable therein).

Articles the product of countries or areas who are not members of the World Trade Organization shall not be permitted or included in the quantitative limitations set forth in this note.
