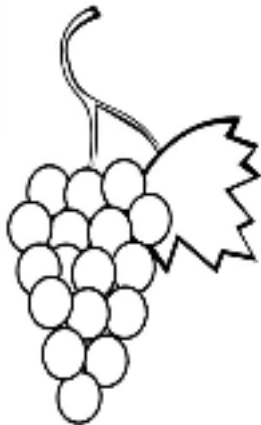




EFTA-SACU

Trade in Agricultural Products



Willy Tinner
Willy.Tinner@seco.admin.ch
Senior Consultant, Berne



Outline

- Agriculture policy in the EFTA States
- EFTA imports of agricultural goods
- Agriculture goods covered in the SACU – EFTA FTA (and the WTO)
- Useful information links
- Examples of exports to the EFTA States



Agriculture in the EFTA States

- 1 % of GDP and 4 % of employment
- Difficult climatic and geographical conditions
- Key employer in rural areas
- Small scale structure agriculture
- High production costs
- High SPS standards





Main agricultural productions

- Iceland
 - Bovine and sheep, especially tender highland lamb of high quality
 - Icelandic horses
- Norway
 - Meat and dairy
 - Grain and some vegetables
- Switzerland
 - Meat, dairy, fruit and wine
 - Famous cheese





Agricultural policy in the EFTA States

- Not a common agricultural policy, but similar
- Active policy to maintain a certain level of agricultural production
 - High tariffs on goods from sensitive sectors; meat and dairy
- Not self-sufficient, large net-importers of agricultural products (Import ca. 50 % of consumption)



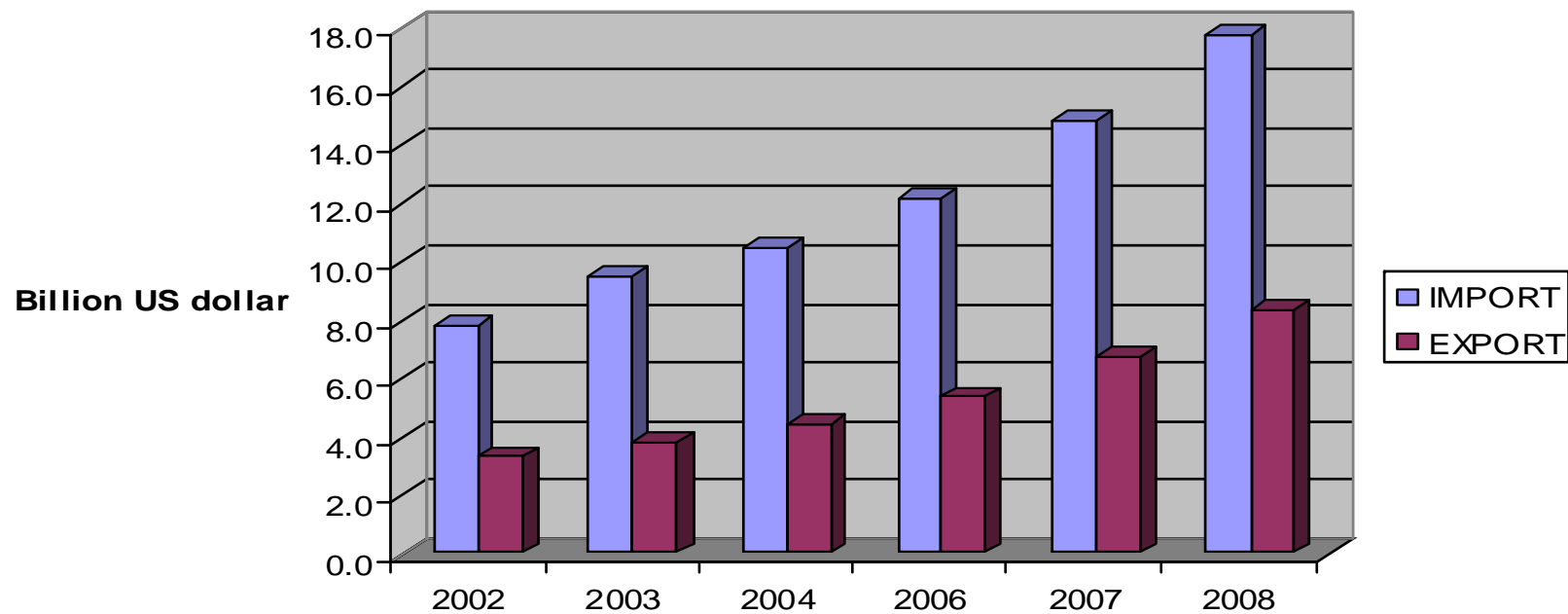


EFTA imports of agricultural goods

- Major net-importers of agricultural goods
- Main trading partner is the European Union (ca. 70%)
- Major product groups that are imported from SACU:
 - Fruits and nuts
 - Beverages
 - Meat
 - Processed agricultural products



EFTA trade with agricultural goods





Framework for trade in agricultural goods between EFTA and SACU

- WTO



- EFTA - SACU Free Trade Agreement



Structure of the FTA

EFTA-SACU Free Trade Area

SACU – Switzerland – Norway – Iceland – Lichtenstein

Free Trade Agreement

**Three Bilateral
Complementary Agreements
On Agriculture**



Agriculture in the SACU – EFTA FTA

ARTICLE 1

Establishment of a free trade area

1. The Parties hereby establish a free trade area in accordance with the provisions of this Agreement, which is based on trade relations between market economies.



Agriculture in the SACU – EFTA FTA

ARTICLE 6

Scope (of trade in goods chapter)

This Chapter shall apply to:

- (a) products falling within Chapters 25 to 98 of the Harmonized Commodity Description and Coding System (HS), except as provided for in Annex II;
- (b) **products specified in Annex III, with due regard to the arrangements provided for in that Annex;** and
- (c) fish and other marine products as provided for in Annex IV.



Agriculture in the SACU – EFTA FTA

- Processed agricultural products
 - Included in the Main Free Trade Agreement in **Annex III**
- Basic agricultural products
 - **Bilateral complementary agricultural agreements** between each of the EFTA States and SACU



Annex III - Processed agricultural products

- Covers products like; **bread, soups, chocolate, preserved fruits and vegetables, prefabricated food....**
- EFTA offers SACU the same treatment as EFTA offers the EU for these products
- No industrial protection. Duty based on content of certain raw materials (mainly dairy and cereal products)



[Home](#) → [Free Trade](#) → [EFTA Free Trade Agreements](#) → [Southern African Customs Union \(SACU\)](#)

SACU INTRO

SOUTHERN AFRICAN CUSTOMS UNION (SACU)

Dates of signature and entry into force:



- Signature: 26 June 2006
- Entry into force: 1 May 2008
- Scope of the Agreement: Article 3 and Annex I

- [Overview](#)
- [Introduction](#)
- [FTA Table of Contents](#)
- [Free Trade Agreement](#)
- [Annexes and Protocols](#)
- [Joint Committee Decisions](#)
- [Trade Statistics EFTA-SACU](#)
- [Notifications under Article 3 of Annex III](#)

Agricultural Agreements

- [Iceland](#)
- [Norway](#)
- [Switzerland](#)

Bilateral agreements

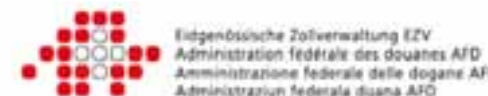


Useful information links

- The SACU – EFTA Free Trade Agreement (including Annex III) and the Bilateral Agricultural Agreements: <http://efta.int/>
- Icelandic Customs tariff: www.tollur.is
- Norwegian Customs tariff: www.toll.no
- Swiss Customs tariff: www.tares.ch



TOLLSTJÓRINN Í REYKJAVÍK





Examples:

- Dried grapes (HS 08.06) into Switzerland:
 - Basic product, bilateral agricultural agreement **Free**
- Natural honey (HS 04.09) into Switzerland:
 - Basic product, bilateral agricultural agreement **19 Fr./100 Kg**
(MFN = 38 Fr./100 Kg)
- Beer (HS 22.03) into Iceland:
 - Processed product, Annex III **Free**
- Wine (HS 22.04) into Norway:
 - Basic product, bilateral agricultural agreement **Free**





Questions ?

- Questions related to agriculture in the EFTA - SACU FTA:

Willy Tinner,
SECO

willy.tinner@seco.admin.ch

Eivind Skjulestad,
EFTA Secretariat
es@efta.int





Thank you!

