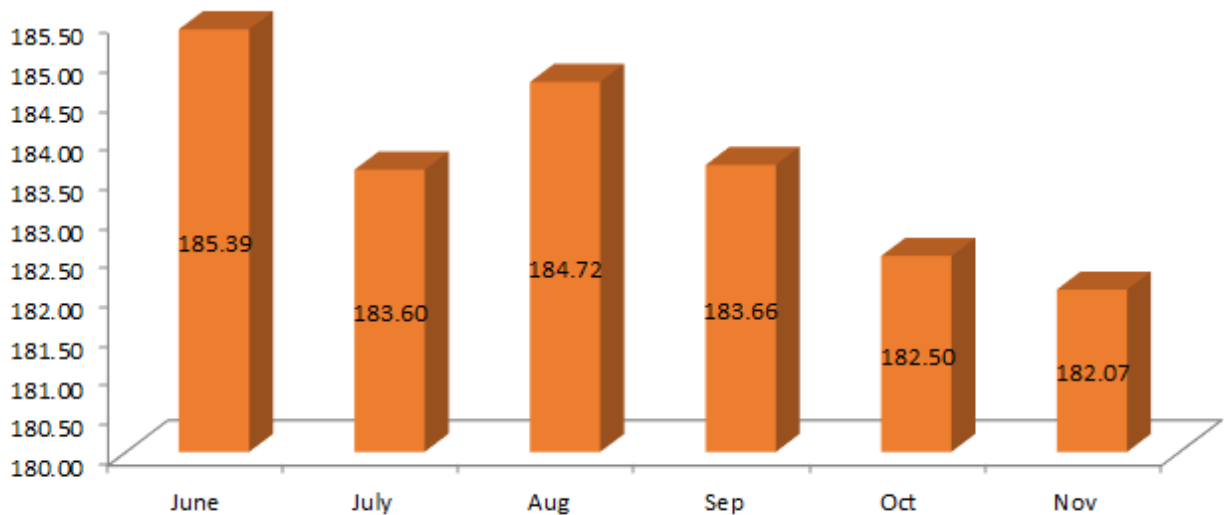


Leading Economic Indicators



Kenya Consumer Price Index



November 2017

Contents

Table 1(a): Kenya Consumer Price Indices	4
Table 1(b): Kenya Inflation rate	5
Table 2: Mean Foreign Exchange rates of Kenyan Shilling against Selected Major Currencies at the end of the Month	7
Table 3: Interest Rates (%)	8
Table 4: Nairobi Securities Exchange	9
Table 5(a): Money Supply	9
Table 5(b): Gross Foreign Exchange Reserves	11
Table 6: Coffee Sales and Prices*	12
Table 7: Tea Production and Auction Prices	13
Table 8: Cane Deliveries	14
Table 9(a): Monthly Retail Prices for Dry Maize, 2016 (per Kg)	15
Table 9(b): Monthly Retail Prices for Dry Maize, 2017 (per Kg)	16
Table 9(c): Average Monthly Retail Prices for Dry Beans, 2016 (per Kg)	17
Table 9(d): Average Monthly Retail Prices for Dry Beans, 2017 (per Kg)	18
Table 10: Exports of Coffee and Tea	19
Table 11: Monthly Exports of Fresh Horticultural Produce	20
Table 12: External Trade	21
Table 13(a): Major Destinations of Domestic Exports	22
Table 13(b): Domestic Exports by Broad Economic Category	23
Table 14(a): Major Origins of Imports	23
Table 14(b): Imports by Broad Economic Category	24
Table 14 (C): Mobile Money Transactions	25
Table 14(d): International trade in ICT 2017	26
Table 15(a): Local Electricity Generation by Source	27
Table 15(b): Generation and Consumption of Electricity	29
Table 15(c): Consumption of Petroleum Fuels	30
Table 15(d): Average Retail Prices for Selected Fuel Products within Nairobi	31
Table 15(e): Average Retail Prices for Selected Fuels in Kenya	32
Table 15(f): Murban ADNOC Crude Oil Prices	33
Table 16: Value of Building Plans Approved by Nairobi City County Planning Compliance & Enforcement Department	34
Table 17(a): Domestic Production of Sugar	35
Table 17(b): Production of Soft Drinks	35
Table 17(c): Production of Assembled Vehicles	36
Table 17(d): Production of Galvanized Sheets	36
Table 17(e): Cement Production and Consumption	37
Table 17(f): Milk Intakes in the Formal Sector	38
Table 18: Visitor Arrivals through J.K.I.A and M.I.A	39
Table 19(a): Jomo Kenyatta international airport-Embarked Passengers by Port of Destination	40
Table 19(b): Jomo Kenyatta international airport- Landed Passengers by Port of Origin	41
Table 19(c): New Vehicle Registration	42

LIST OF FIGURES

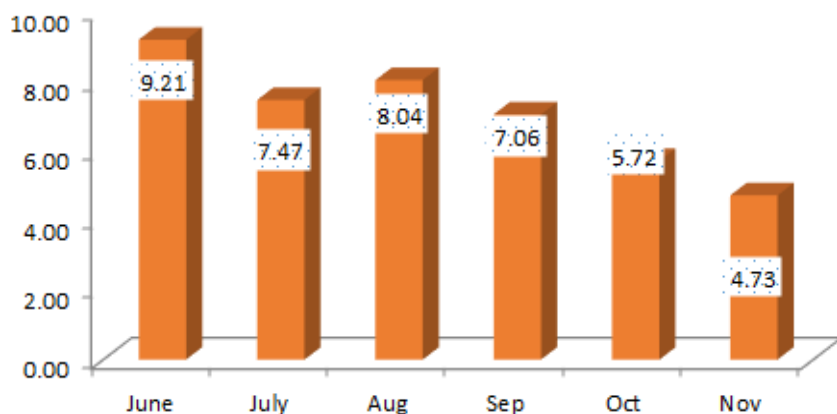
	Page Number
Fig. 1: Inflation rates	6
Fig. 2: End of Month Mean Exchange rate of Kenya Shillings against Major Selected Currencies	7
Fig. 3: Nairobi Securities Exchange 20 Share Index	9
Fig. 5: Coffee Sales at the Nairobi Coffee Exchange	12
Fig. 6: Tea Production	13
Fig. 7: Cane Deliveries	14
Fig. 8: Electricity Generation by Source	28
Fig. 9: Average Prices for Liquefied Petroleum Gas in Kenya ('000 KSh per 13 Kg cylinder)	32
Fig. 10: Trends for Different world Crude Oil Prices	33
Fig. 11: Milk Intake in the Formal Sector	38
Fig. 12: Visitor Arrivals through J.K.I.A and M.I.A	39

KEY HIGHLIGHTS

OVERVIEW

The Leading Economic Indicators highlights trends in Consumer Price Indices (CPI) and inflation, interest rates, exchange rates, international trade, agriculture, energy, manufacturing, building and construction, tourism and transport.

MACROECONOMIC INDICATORS



Consumer Price Index (CPI) decreased from 182.50 points in October 2017 to 182.07 points in November 2017. The overall rate of inflation dropped from 5.72 per cent to 4.73 per cent during the same period. In November 2017, the Kenyan Shilling depreciated against the major trading currencies except for the US Dollar and the Tanzanian Shilling.

The average yield rate for the 91-day Treasury bills, which is a benchmark for the general trend of interest rates, decreased from 8.09 per cent in October 2017 to 8.01 per cent in November 2017

while the inter-bank rate rose from 7.85 per cent to 8.86 per cent over the same period.

The Nairobi Securities Exchange (NSE) 20 share index increased from 3,730 points in October 2017 to 3,816 points in November 2017, while the total number of shares traded rose from 314 million shares to 524 million shares during the same period. The total value of NSE shares traded increased from KSh 9.4 billion in October 2017 to KSh 14.7 billion in November 2017.

Broad money supply (M3), a key indicator for monetary policy formulation, increased from KSh 2,987.87 billion in October 2017 to KSh 3,012.33 billion in November 2017. Gross Foreign Exchange Reserves dropped from KSh 1,030.09 billion in October 2017 to KSh 1,005.51 billion in November 2017. Net Foreign Exchange Reserves reduced from KSh 570.28 billion in October 2017 to KSh 555.19 billion in November 2017.



The quantity of coffee auctioned at the Nairobi Coffee Exchange was 2,310.39 MT in November 2017 while the average auction price stood at KSh 419.48 per kilogram over the same period. The quantity of produced tea increased from 43,420.04 MT in October 2017 to 45,373.52 MT in November 2017. The price of processed tea dropped from

KSh 316.27 to KSh 308.62 per kilogram over the same period. The amount of cane deliveries increased from 452.81 thousand tonnes in October 2017 to 571.21 thousand tonnes in November 2017. The average monthly price per Kg for maize was 60.00 KSh in November 2017. Bean prices averaged at KSh 110.18 per Kg during the same month.

The quantity of cut-flower horticultural exports in November 2017 was at 14,168.98 MT while its' value of exports was KSh 6,943.91 million during the period. The volume of vegetable exports decreased from 7,953.25 MT in October 2017 to 7,874.39 MT in November 2017. The value of vegetable exports increased from KSh 1,891.61 million in October 2017 to KSh 2,093.66 million in November 2017.

INTERNATIONAL TRADE

Quantity of coffee exported increased from 2,335.03 MT in October 2017 to 3,195.62 MT in November 2017, while its value went up from KSh 1,121.21 million to KSh 1,565.89 million over the same period. The quantity of tea exported reduced from 41,172.86 MT in October 2017 to 39,127.97 MT in November 2017, while its value also reduced from KSh 13,147.28 million to KSh 12,712.92 million over the same period.

Volume of trade dropped from KSh 196.99 billion in October 2017 to KSh 189.03 billion in November 2017. The value of total exports increased to KSh 50.87 billion in November 2017 while the value of imports dropped from KSh 147.90 billion in October 2017 to KSh 138.15 billion in November 2017.

Domestic exports by Broad Economic Category (BEC) indicated that food and beverages was the main export category in November 2017 accounting for 47.13 per cent of exports, while non-food industrial supplies and consumer goods not elsewhere specified accounted for 23.61 per cent and 25.27 per cent of the value of total domestic exports, respectively.

Imports by BEC indicate that non-food industrial supplies was the main import category in November 2017 with a share of 32.60 per cent. Machinery & other capital equipment; fuel and lubricants; and transport equipment constituted 14.02, 20.3 and 10.76 per cent, of the total value of imports, respectively. Imports of food and beverage recorded a share of 13.56 per cent of the total imports while consumer goods not elsewhere specified recorded a share of 8.73 per cent.

ENERGY



Total local electricity generation increased from 873.45 million KWh in September 2017 to 876.10 million KWh in October 2017. In the international market, the price of Murban crude oil decreased from an average of US Dollars 63.83 per barrel in October 2017 to US Dollars 63.65 per barrel in November, 2017.

The national average domestic retail oil prices of motor gasoline premium rose from KSh 101.09 per litre in October 2017 to KSh 103.58 per litre in November 2017. The price of light diesel oil increased to retail at KSh 93.37 in November 2017 up from KSh 88.43 in October 2017. The average price for Kerosene rose to retail at KSh 72.20 in November 2017 up from 67.12 in October 2017. Charcoal prices averaged KSh 82.51 per 4KG tin in November 2017. The price of a 13-Kg cylinder of gas averaged KSh 2,128.59 in November 2017.

MANUFACTURING, BUILDING AND CONSTRUCTION



The quantity of cement produced decreased from 498,374 MT in October 2017 to 494,518 MT in November, 2017. Consumption of cement dropped from 477,047 MT to 459,868 MT during the same period. Sugar production increased from 10,892 Metric tonnes in August 2017 to 21,649 Metric tonnes in September 2017. Production of

assembled vehicles increased from 321 units in September 2017 to 392 units in October 2017. Milk uptake in the formal sector rose from 47.49 million litres in October 2017 to 47.70 million litres in November 2017.

TOURISM AND TRANSPORT



The total number of visitors arriving through Jomo Kenyatta (JKIA) and Moi International Airports (MIA) increased to 72,573 in November 2017 from 64,591 in October 2017.

The number of passengers who landed at Jomo Kenyatta International Airport (JKIA) increased from 179,477 in October 2017 to 179,549 in November 2017, while passengers who embarked decreased from 108,770 persons to 108,757 persons in the same period.

The total number of vehicles registered increased to 22,954 in November 2017 from 18,889 in October 2017. 13,162 motorcycles and 5,951 station wagons were registered during the month of November 2017.

Table 1(a): Kenya Consumer Price Indices

Kenya CPI: Base period February 2009=100

Group	Nairobi			Nairobi Combined	Rest of Urban Areas	Kenya CPI
	Lower Income	Middle Income	Upper Income			
2016						
January	167.60	144.24	144.30	161.09	168.36	165.37
February	167.38	143.39	144.19	160.72	168.11	165.06
March	169.19	143.78	144.21	162.12	168.58	165.92
April	170.86	143.97	145.61	163.42	169.62	167.07
May	171.89	144.59	145.93	164.32	170.55	167.99
June	174.08	145.59	146.21	166.15	172.29	169.76
July	174.51	146.18	146.94	166.64	173.78	170.84
August	174.40	146.76	148.33	166.75	173.92	170.97
September	174.60	147.19	148.71	167.01	174.74	171.56
October	176.05	147.22	148.68	168.06	175.82	172.62
November	177.67	147.61	149.23	169.35	177.01	173.85
December	178.10	148.37	149.68	169.85	178.91	175.18
2017						
January	179.78	150.25	150.19	171.54	180.70	176.93
February	183.80	151.94	150.99	174.88	183.55	179.98
March	188.07	153.20	151.28	178.27	186.28	182.98
April	191.95	155.28	151.30	181.57	189.52	186.24
May	192.75	155.81	151.51	182.28	191.38	187.64
June	189.69	154.29	150.94	179.69	189.38	185.39
July	187.45	154.19	151.32	178.06	187.48	183.60
August	188.90	155.14	152.02	179.36	188.48	184.72
September	188.23	155.36	151.87	178.93	186.98	183.66
October	188.21	156.04	152.99	179.12	184.87	182.50
November	187.64	156.27	153.38	178.78	184.38	182.07

Notes

1. Nairobi Lower Income group - Households spending less than KSh 23,670 in October 2005

2. Nairobi Middle Income Group- Households spending between KSh 23,671 to KSh 119,999 in October 2005

3. Nairobi Upper Income Group - Households spending above KSh 120,000 in October 2005

Rest of Urban areas includes Mombasa, Malindi, Machakos, Nyeri, Thika, Nakuru, Kisii, Kisumu, Eldoret, Nyahururu, Garissa and Bungoma.

Table 1(b): Kenya Inflation rate

Period	Rates					Kenya Inflation
	Nairobi				Rest of Urban Areas	Kenya CPI
	Lower Income	Middle Income	Upper Income	Combined		
2016						
January	7.68	5.91	5.44	7.22	8.16	7.78
February	6.95	5.24	5.51	6.53	7.47	7.09
March	6.54	4.88	5.21	6.13	6.67	6.45
April	5.57	4.52	5.76	5.35	5.22	5.27
May	6.05	4.06	5.02	5.58	4.61	5.00
June	7.15	3.48	5.00	6.28	5.48	5.80
July	7.24	3.55	3.95	6.33	6.44	6.39
August	7.14	3.60	3.35	6.24	6.27	6.26
September	7.03	3.62	3.74	6.17	6.45	6.34
October	7.18	3.73	3.93	6.32	6.57	6.47
November	7.02	4.13	4.58	6.32	6.92	6.68
December	6.34	2.16	4.42	5.37	7.01	6.35
2017						
January	7.27	4.17	4.08	6.49	7.33	6.99
February	9.81	5.97	4.72	8.81	9.19	9.04
March	11.16	6.55	4.90	9.96	10.50	10.28
April	12.34	7.86	3.91	11.10	11.73	11.48
May	12.14	7.76	3.82	10.93	12.21	11.70
June	8.97	5.97	3.23	8.15	9.92	9.21
July	7.41	5.48	2.98	6.86	7.88	7.47
August	8.31	5.71	2.49	7.56	8.37	8.04
September	7.81	5.55	2.12	7.14	7.00	7.06
October	6.90	5.99	2.90	6.58	5.15	5.72
November	5.61	5.86	2.78	5.57	4.16	4.73

Fig. 1: Inflation rates

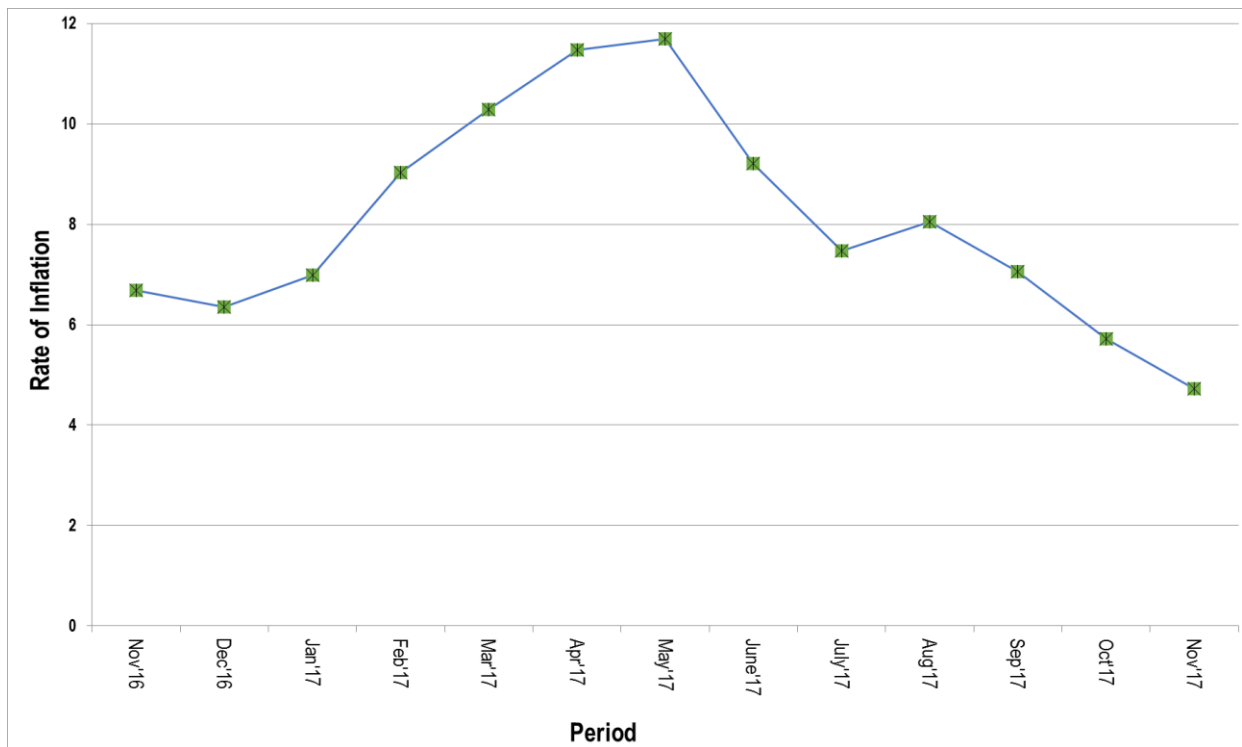


Table 2: Mean Foreign Exchange rates of Kenyan Shilling against Selected Major Currencies at the end of the Month

Year	2016						2017										
Currency	July	Aug	Sep	Oct	Nov	Dec	Jan	Feb	Mar	April	May	June	July	Aug	Sep	Oct	Nov
1 US Dollar	101.33	101.41	101.27	101.32	101.75	102.13	103.75	103.64	102.85	103.33	103.38	103.50	103.88	103.56	103.13	103.40	103.25
1 Pound Sterling	133.42	132.89	133.15	125.47	126.29	127.68	128.01	129.46	126.87	130.43	133.06	132.48	134.86	134.24	136.98	136.40	138.38
1 Euro	112.10	113.66	113.48	111.88	109.98	107.67	110.17	110.36	109.87	110.68	115.63	116.24	119.40	122.24	122.86	121.51	122.42
100 Japanese Yen	97.24	100.24	99.33	97.78	94.27	88.10	90.09	91.69	91.08	93.72	93.21	93.35	92.30	94.30	93.29	91.66	92.24
1 SA Rand	7.02	7.40	7.21	7.27	7.32	7.36	7.65	7.85	7.96	7.67	7.87	8.03	7.90	7.82	7.86	7.57	7.56
USHS/KES	33.34	33.25	33.40	33.88	34.93	35.25	34.79	34.58	34.98	35.03	34.85	34.69	34.67	34.82	34.90	35.16	35.20
TSHS/KES	21.61	21.57	21.56	21.54	21.44	21.34	21.40	21.56	21.73	21.62	21.63	21.62	21.55	21.62	21.74	21.71	21.71

Source: Central Bank of Kenya

Fig. 2: End of Month Mean Exchange rate of Kenya Shillings against Major Selected Currencies

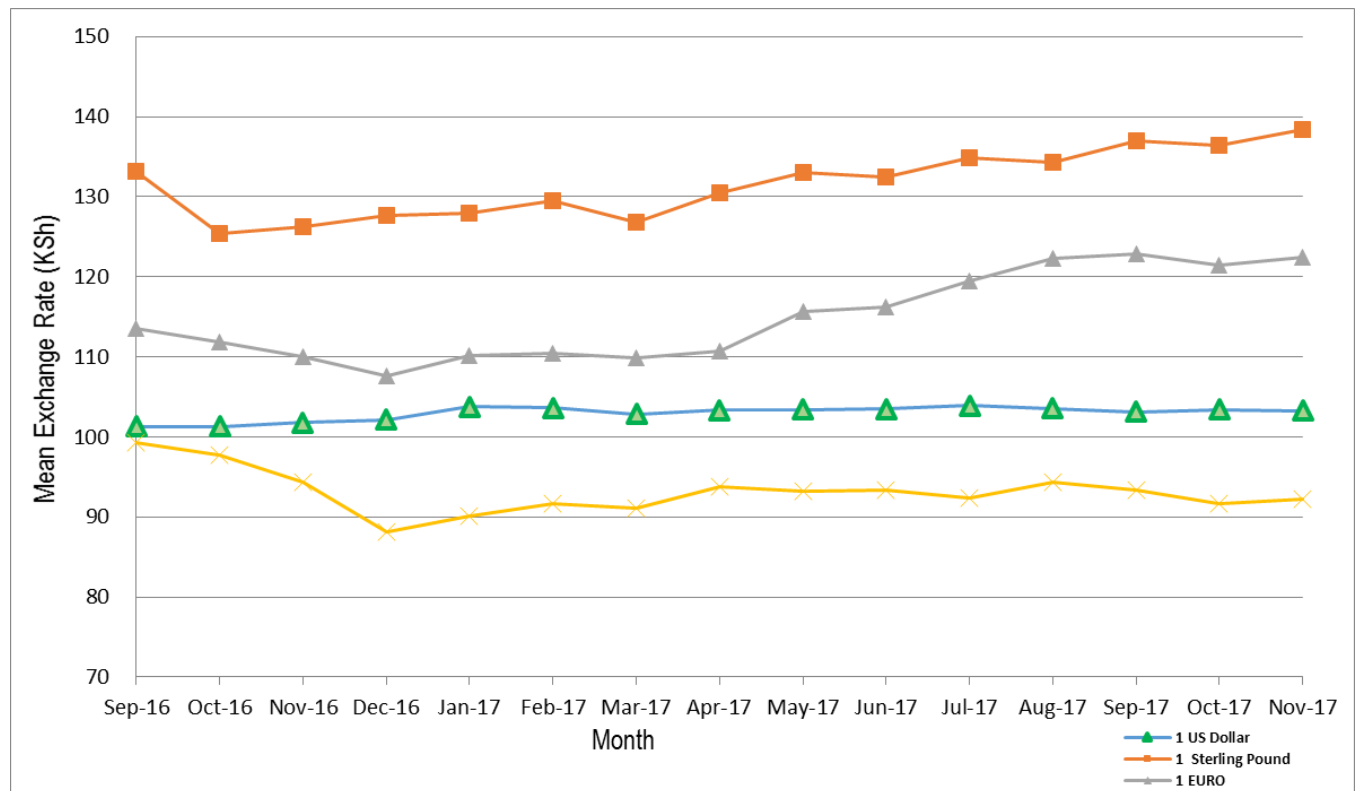


Table 3: Interest Rates (%)

Month/Year	Average Yield Rates 91 – Days Treasury Bills	Central Bank Rate	Rates for Commercial Banks Loans and Advances (Weighted Average)	Overdraft Rates	Average Deposit Rate	Inter – Bank Rates	Savings (Commercial Banks Rates)
2016							
January	11.36	11.50	18.00	18.25	7.54	6.12	1.56
February	10.63	11.50	17.91	18.25	7.51	4.54	1.40
March	8.72	11.50	17.87	18.06	7.17	4.10	1.35
April	8.92	11.50	18.04	18.36	6.70	4.01	1.49
May	8.15	10.50	18.22	18.25	6.38	3.82	1.59
June	7.25	10.50	18.18	18.04	6.78	4.56	1.60
July	6.16	10.50	18.10	17.53	6.64	5.88	1.67
August	8.48	10.50	17.66	17.96	6.42	4.98	1.68
September	8.06	10.00	13.86	13.74	6.91	4.87	3.78
October	7.76	10.00	13.73	13.48	7.82	4.12	6.08
November	8.26	10.00	13.66	13.49	7.65	5.12	6.52
December	8.44	10.00	13.69	13.49	7.33	5.92	6.37
2017							
January	8.62	10.00	13.66	13.30	7.20	7.70	6.09
February	8.64	10.00	13.69	13.32	7.66	6.41	6.81
March	8.68	10.00	13.61	13.29	7.12	4.46	5.89
April	8.77	10.00	13.52	13.30	6.97	5.31	5.67
May	8.73	10.00	13.71	13.44	7.07	4.93	5.85
June	8.42	10.00	13.66	13.75	7.05	3.99	5.66
July	8.22	10.00	13.68	13.64	7.47	6.84	6.40
August	8.18	10.00	13.65	13.66	7.29	8.12	5.94
September	8.13	10.00	13.69	13.65	7.62	5.52	6.42
October	8.09	10.00				7.85	
November	8.01	10.00				8.86	

Table 4: Nairobi Securities Exchange

Month	Number of Transactions	Number of Shares (Million)	Value of Shares (Million KSh)	NSE 20 Share Index
2016				
March	30,789	536	13,449	3,982
April	25,012	426	10,066	4,009
May	24,212	384	9,721	3,868
June	26,442	601	17,247	3,641
July	22,225	544	13,613	3,489
August	29,462	708	17,655	3,179
September	24,833	746	16,872	3,243
October	21,690	351	7,846	3,251
November	26,154	461	10,439	3,247
December	16,780	289	7,107	3,186
2017				
January	19,429	572	12,054	2,794
February	19,475	651	12,579	2,962
March	23,345	636	12,460	3,112
April	17,901	446	11,409	3,158
May	27,718	697	16,348	3,441
June	27,101	749	17,144	3,607
July	26,045	823	21,304	3,700
August	32,405	640	16,024	4,027
September	25,337	556	16,248	3,751
October	18,978	314	9,390	3,730
November	26,534	524	14,760	3,816

Source: Nairobi Securities Exchange Limited
Base Jan 1966=100

Fig. 3: Nairobi Securities Exchange 20 Share Index

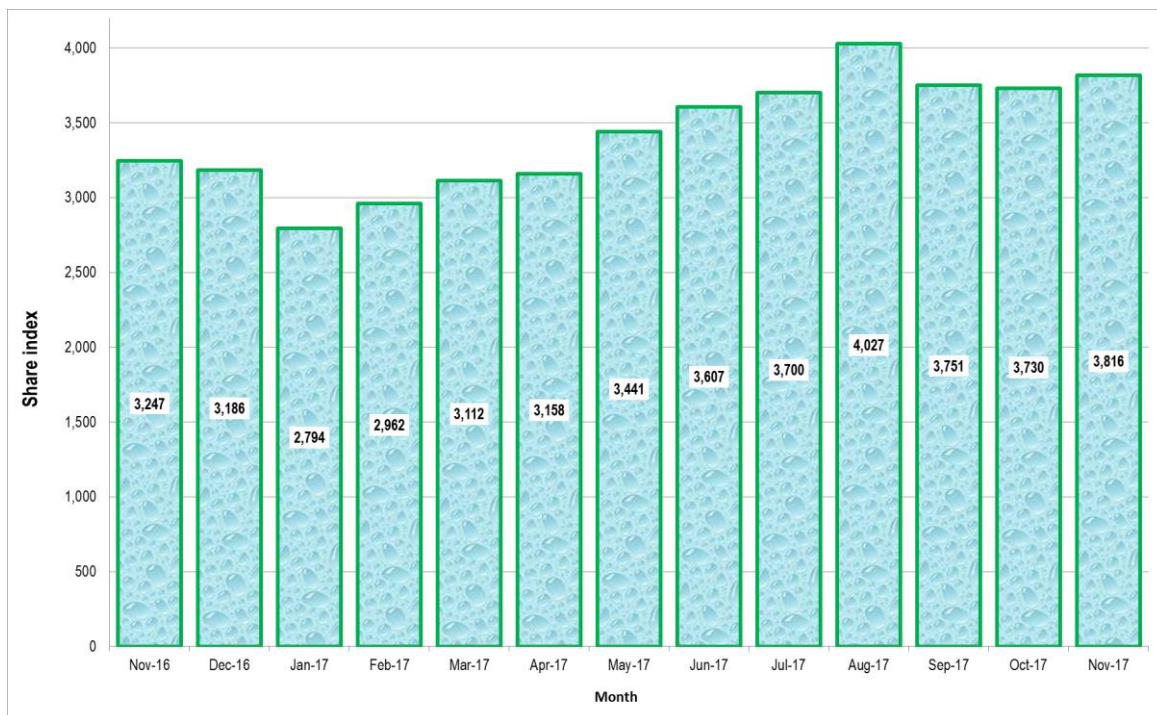


Table5(a):MoneySupply

KSh million

As at end of month	Money (M1)*	Quasi – Money	NBFI's**	Total (M2)***	Foreign currency deposits ¹	Broad Money (M3)****	% Change
2016							
January	1,044,123	1,175,600	249	2,219,473	411,624	2,631,097	-1.67
February	1,040,914	1,208,740	342	2,249,313	396,228	2,645,541	0.53
March	1,078,361	1,203,461	249	2,281,572	399,938	2,681,510	1.34
April	1,103,357	1,202,378	281	2,305,454	405,680	2,711,134	1.09
May	1,115,969	1,201,806	250	2,317,524	410,286	2,727,810	0.63
June	1,135,921	1,217,968	475	2,353,413	422,815	2,776,228	1.74
July	1,109,460	1,213,209	901	2,321,769	416,108	2,737,877	-1.56
August	1,113,870	1,215,828	973	2,328,724	434,574	2,763,298	0.96
September	1,238,618	1,104,988	3,410	2,340,196	441,014	2,781,210	0.80
October	1,273,774	1,079,570	3,359	2,349,985	418,318	2,768,303	-0.46
November	1,287,267	1,063,968	3,183	2,348,053	429,574	2,777,627	0.34
December	1,310,016	1,053,188	3,002	2,360,202	404,305	2,764,507	-0.47
2017							
January	1,272,950	1,066,278	3,072	2,336,156	423,043	2,759,199	-0.19
February	1,287,123	1,066,336	3,096	2,350,363	430,871	2,781,234	0.80
March	1,317,184	1,097,894	2,976	2,412,103	434,531	2,846,634	2.35
April	1,363,661	1,090,238	2,978	2,450,921	444,445	2,895,366	1.71
May	1,359,121	1,105,187	3,089	2,461,219	441,635	2,902,854	0.26
June	1,394,321	1,093,367	3,033	2,484,654	450,607	2,935,261	1.12
July	1,382,374	1,116,732	3,083	2,496,023	461,915	2,957,938	0.77
August	1,364,341	1,141,980	3,168	2,503,153	463,839	2,966,992	0.31
September	1,382,684	1,134,920	3,182	2,514,422	475,220	2,989,642	1.85
October	1,395,418	1,122,901	3,182	2,515,137	472,730	2,987,867	1.01
November	1,387,745	1,136,234	2,994	2,520,985	491,348	3,012,333	1.53

Source: Central Bank of Kenya

* Currency in circulation less cash in banks plus all demand deposits except those of National & County government, Banks, non-residents and foreign currency deposits

** All other deposits in commercial banks, except those of National government.

***Broad money (M2) is the sum of M1, Quasi money in Banks and Quasi money in NBFIs..

**** Broad Money (M3) includes M2 and Foreign currency deposits

M2=(M1+QM-NBFIs)

Table 5(b): Gross Foreign Exchange Reserves

Month	Central Monetary Authority		Total	Foreign Assets		Gross Total	Net of Foreign Exchange Liabilities ^
	Central Bank	National Government**		Commercial Banks	NBFI		
2016							
January	758,250	1,997	760,247	219,676	1,019	980,942	475,728
February	763,307	1,983	765,290	196,827	449	962,566	459,514
March	786,160	2,017	788,177	202,897	348	991,422	473,919
April	803,930	2,027	805,957	210,085	138	1,016,180	520,094
May	799,984	1,998	801,982	208,686	185	1,010,853	511,573
June	826,995	1,992	828,987	225,644	380	1,055,011	564,983
July	819,852	1,987	821,839	224,735	139	1,046,713	556,330
August	819,867	1,987	821,854	224,052	373	1,046,279	577,824
September	824,645	1,987	826,631	243,270	404	1,070,305	594,122
October	810,612	1,954	812,566	232,025	117	1,044,708	576,317
November	779,924	1,937	781,861	250,070	202	1,032,133	564,286
December	751,911	1,936	753,847	206,471	1,714	962,032	497,446
2017							
January	762,878	1,983	764,861	234,720	610	1,000,191	519,719
February	761,269	1,979	763,249	253,251	444	1,016,944	534,889
March	837,107	1,978	839,085	247,908	833	1,087,826	604,954
April	895,865	2,005	897,842	259,934	309	1,158,086	678,951
May	885,031	2,021	887,052	242,264	88	1,129,404	658,591
June	878,233	2,041	880,273	250,729	1,984	1,132,986	651,969
July	844,796	2,068	846,864	251,227	1,003	1,099,094	618,008
August	815,225	2,060	817,285	254,556	4,063	1,075,904	609,019
September	830,516	2,068	832,576	251,245	1,721	1,085,543	617,641
October	783,017	2,062	785,079	244,371	642	1,030,091	570,283
November	766,594	2,071	768,665	235,703	1,144	1,005,512	555,190

Source: Central Bank of Kenya

* Includes encumbered reserves

**National Government includes reserve position in the Fund and deposits with Crown Agents.

^ Revised

Table 6: Coffee Sales and Prices*

Month	2015			2016			2017***		
	QUANTITY (MT)	PRICE (\$ /kg)	PRICE (Ksh /kg)	QUANTITY (MT)	PRICE (\$ /kg)	PRICE (Ksh /kg)	QUANTITY (MT)	PRICE (\$ /kg)	PRICE (Ksh /kg)
January	2,795.04	4.51	411.64	3,432.03	4.51	461.78	5,190.40	5.69	590.17
February	4,838.10	5.35	489.26	5,219.72	4.77	485.71	6,080.63	5.85	606.23
March	5,569.92	4.12	378.17	6,835.21	4.31	437.29	5,460.00	4.93	506.64
April	3,713.07	3.32	310.42	4,513.44	3.36	339.66	4,562.82	2.90	299.26
May	2,966.46	3.00	288.92	4,734.79	2.61	262.90	1,639.23	2.68	276.43
June**	-	-	-	1,747.29	2.65	268.44	-	-	-
July	2,085.54	3.35	339.49	568.89	3.20	324.01	762.44	4.04	419.60
August	3,286.29	3.62	371.21	3,723.02	4.25	430.63	2,318.84	4.28	443.01
September	2,643.10	3.46	363.96	3,284.28	4.32	437.46	2,464.54	4.43	457.16
October	1,768.47	3.11	319.60	1,572.93	4.05	410.09	1,619.40	3.95	408.72
November	1,267.96	3.30	337.27	2,373.89	4.60	467.73	2,310.39	4.05	419.48
December	1,282.39	4.26	435.30	1,666.38	5.03	514.10			
Annual	32,216.00	3.45	337.10	39,671.87	3.97	403.32			

Source: Coffee Directorate

* Auction Price

NB: MT denotes Metric Tonnes

*** Provisional

** Nairobi Coffee Exchange was in recess for most of June 2015 & June 2017

Fig. 4: Coffee Sales at the Nairobi Coffee Exchange

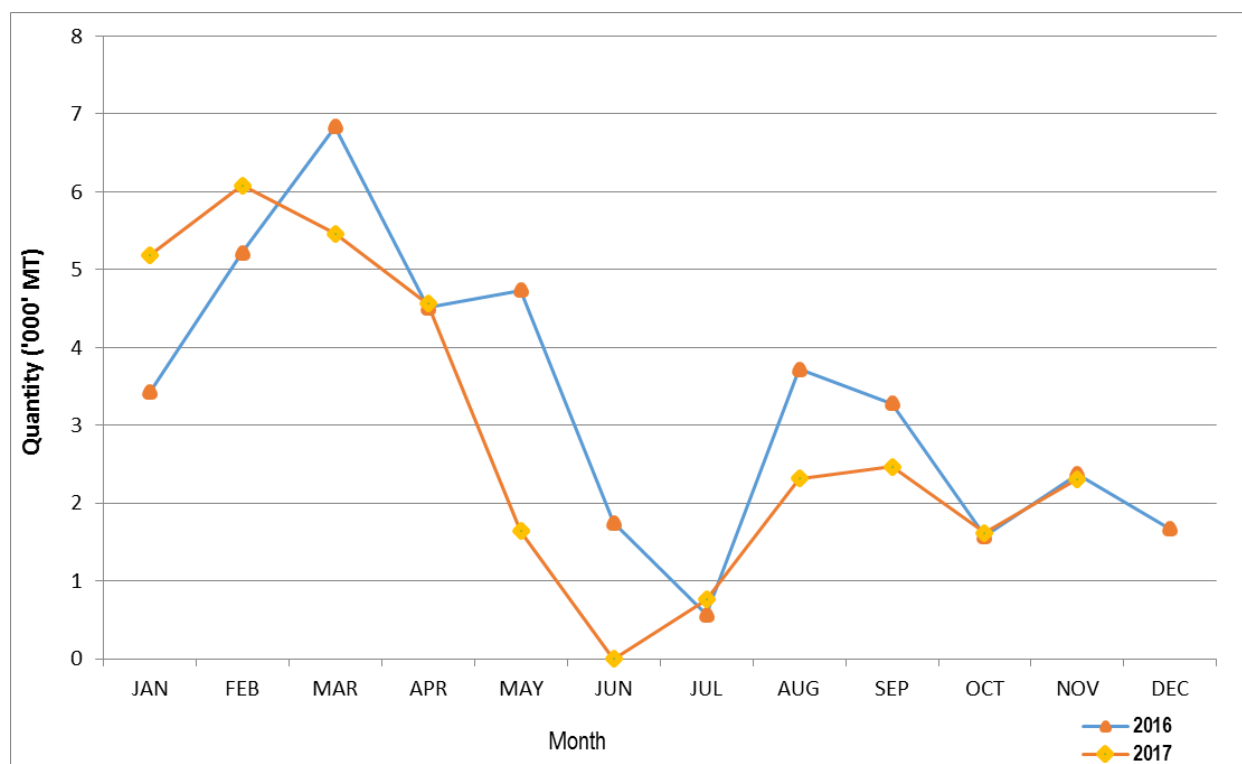


Table 7: Tea Production and Auction Prices

Months	2014			2015			2016			2017*		
	QUANTITY (MT)	PRICE (\$/Kg)	PRICE (KSh/Kg)	QUANTITY (MT)	PRICE (\$/Kg)	PRICE (KSh/Kg)	QUANTITY (MT)	PRICE (\$/Kg)	PRICE (KSh/Kg)	QUANTITY (MT)	PRICE (\$/Kg)	PRICE (KSh/Kg)
January	44,970.00	2.74	235.57	41,653.00	2.32	211.80	50,307.83	2.72	278.50	32,990.70	3.05	315.87
February	33,774.00	2.35	202.55	24,276.00	2.42	221.42	43,968.85	2.48	252.82	22,604.95	3.06	317.03
March	33,336.00	2.16	186.93	15,688.00	2.72	249.85	45,329.83	2.30	233.60	34,498.48	2.92	300.48
April	39,975.00	2.16	187.59	23,837.00	2.77	258.38	37,570.66	2.11	213.89	31,458.46	2.87	296.83
May	41,186.00	2.06	179.49	37,523.00	3.09	296.70	36,573.48	2.21	222.84	38,822.25	2.95	304.48
June	31,945.00	2.03	177.90	32,286.00	3.27	319.40	35,602.75	2.40	242.50	40,537.92	3.14	324.63
July	30,790.00	2.28	199.85	30,942.00	3.39	343.76	29,285.11	2.43	246.44	31,565.43	2.99	309.97
August	26,756.00	2.17	191.27	28,410.00	3.21	329.53	29,461.55	2.31	234.27	32,693.18	2.90	299.52
September	33,321.00	2.01	178.32	36,484.00	3.10	326.69	36,785.39	2.33	235.92	38,386.20	2.96	304.52
October	45,368.00	2.02	180.48	41,343.00	3.24	333.37	41,342.04	2.39	242.56	43,420.04	3.06	316.27
November	38,614.00	2.02	181.71	40,382.00	3.06	312.62	39,903.19	2.68	272.70	45,373.52	2.98	308.62
December	45,071.00	2.01	181.87	46,387.00	3.03	309.26	45,103.41	2.67	272.81			
Annual	445,106.00	2.17	190.29	399,211.00	2.96	291.23	471,234.00	2.42	245.74			

Source: Tea Directorate

MT denotes Metric Tonnes

*Provisional

Fig. 5: Tea Production

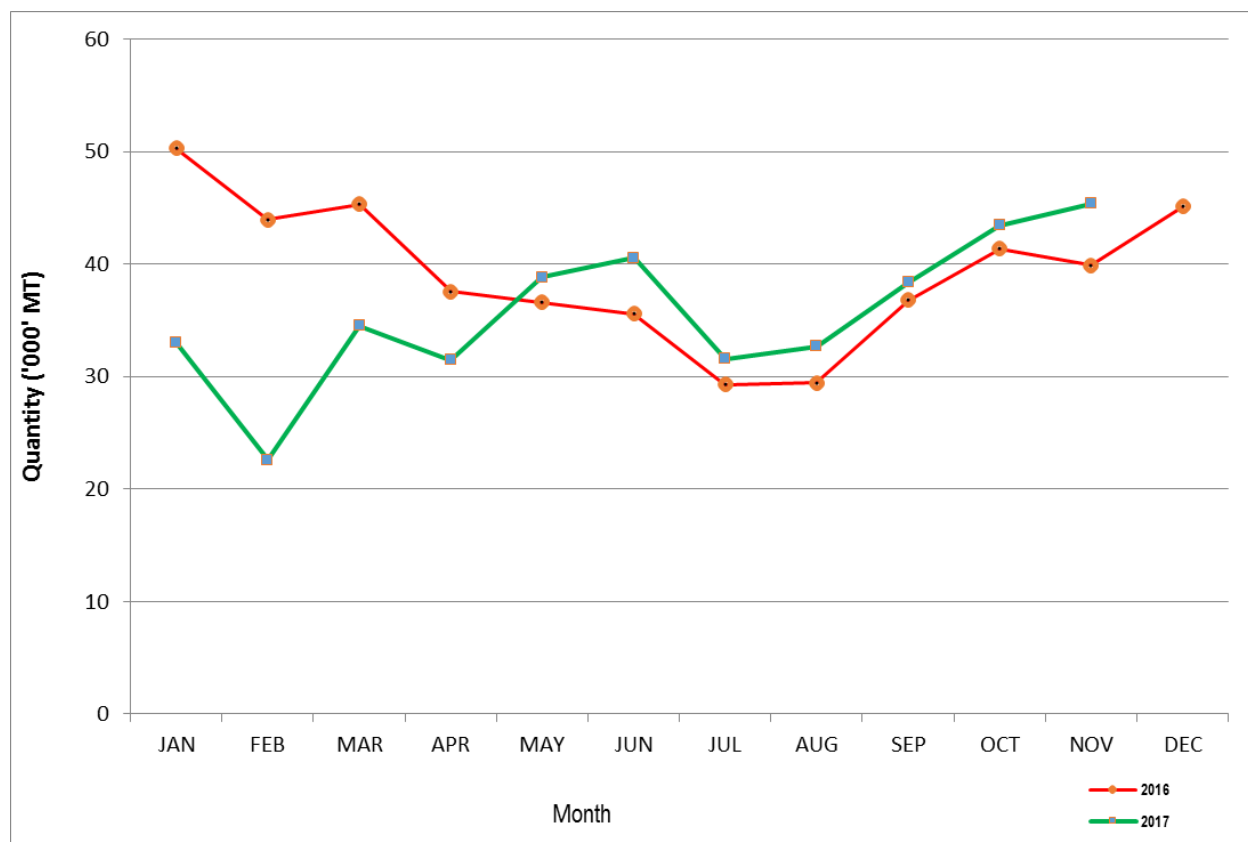


Table 8: Cane Deliveries

Month	000 Metric Tonnes						
	2011	2012	2013	2014	2015	2016	2017*
January	540.53	601.90	564.50	693.47	647.34	670.46	581.60
February	537.61	565.90	530.00	620.51	585.21	640.51	519.40
March	582.05	605.50	516.70	645.88	645.07	757.06	470.73
April	542.74	469.30	442.70	543.85	521.26	576.69	304.79
May	490.58	369.20	414.80	533.67	529.33	514.66	231.97
June	452.20	571.40	583.40	523.75	544.01	629.67	248.94
July	301.60	438.00	639.50	593.20	558.98	609.30	244.69
August	314.03	466.40	622.30	547.65	585.74	564.44	173.26
September	328.10	371.90	543.10	533.43	619.35	568.36	290.70
October	330.59	370.90	569.40	467.11	550.81	568.83	452.81
November	415.98	432.20	657.50	369.34	496.55	540.69	571.21
December	502.56	453.70	587.90	405.79	565.57	520.17	
Total	5,338.56	5,716.30	6,671.70	6,477.65	6,849.23	7,160.84	

Source : Sugar Directorate

* Provisional

Fig. 6: Cane Deliveries

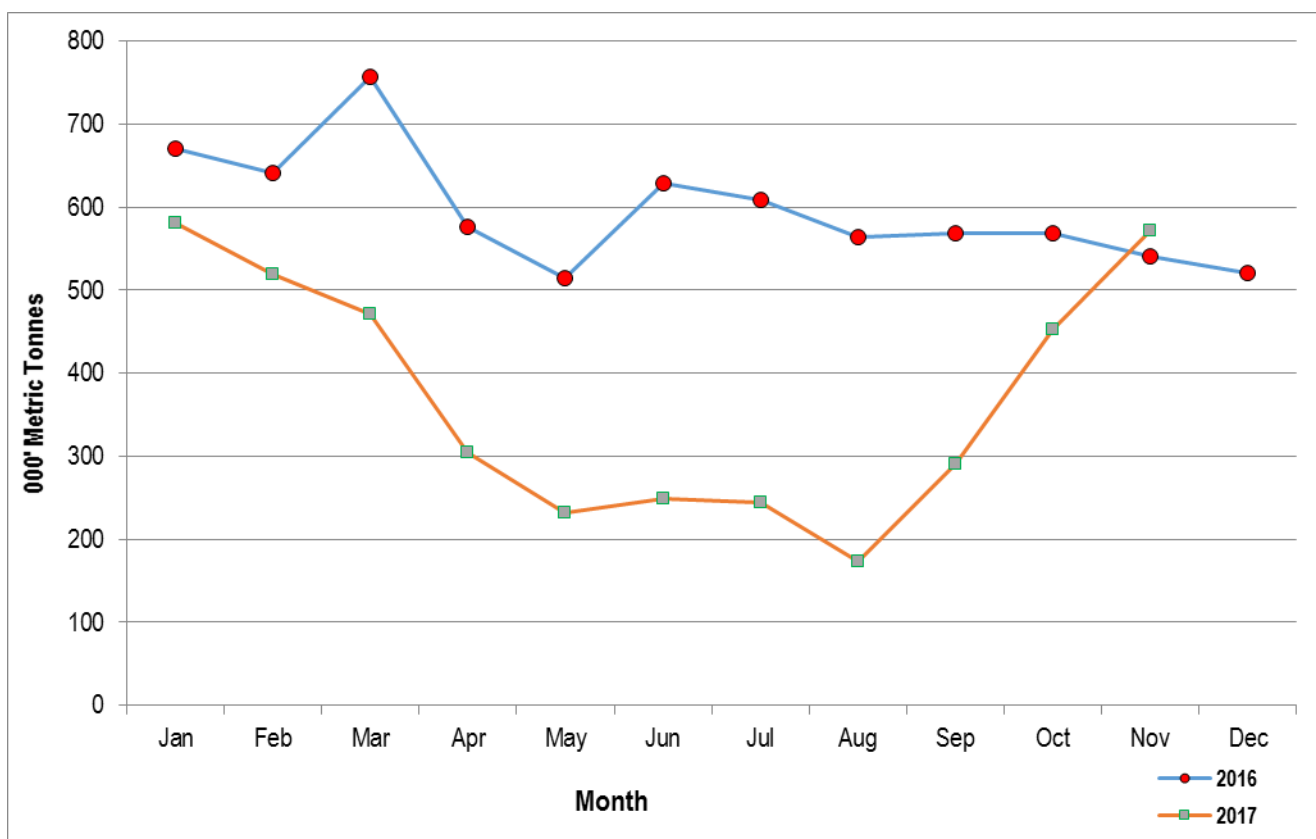


Table 9(a): Monthly Retail Prices for Dry Maize, 2016 (per Kg)

Month/Town	JAN	FEB	MAR	APR	MAY	JUNE	JULY	AUG	SEPT	OCT	NOV	DEC
Kiambu	-	-	35.00	35.00	35.00	35.00	-	-	40.00	40.00	40.00	40.00
Limuru	-	-	35.00	35.00	35.00	35.00	-	-	40.00	38.75	40.00	40.00
Thika	-	45.00	45.00	-	-	40.00	40.00	40.00	40.00	40.00	40.00	-
Gatundu	-	-	44.17	45.00	45.00	45.00	30.00	36.25	35.00	35.00	-	-
Kutus	32.41	24.00	23.71	25.36	25.00	29.17	33.33	32.03	32.00	36.04	35.71	37.50
Sagana	29.03	26.39	42.28	51.19	22.78	31.82	39.05	33.34	29.05	33.37	38.14	41.25
Kerugoya	34.61	33.33	28.17	27.70	22.48	33.41	38.10	51.13	30.43	35.57	38.24	40.91
Muthithi	22.73	22.73	22.73	23.87	24.09	25.00	26.14	31.82	32.39	34.09	34.09	35.00
Makuyu	28.57	28.57	27.98	23.81	26.19	-	-	-	-	-	37.30	38.10
Kiriaini	32.50	35.00	34.38	35.00	-	-	-	-	-	37.50	37.00	37.92
Oi Kalou	-	-	-	-	-	-	-	47.62	50.00	50.00	45.00	45.00
Ndaragwa	-	-	-	-	-	-	-	-	33.33	40.00	40.50	-
Nyeri	31.82	33.79	37.96	35.80	31.47	32.19	39.47	40.00	40.00	36.32	40.00	40.00
Enderasha	38.10	35.71	-	-	-	30.00	30.10	35.00	35.00	35.00	35.00	35.00
Karatina	34.17	35.00	33.75	32.50	30.08	24.41	31.27	34.17	33.36	31.86	30.00	30.00
Gakindu	33.36	34.58	36.95	35.97	30.00	46.67	38.26	38.49	35.00	38.75	40.00	40.00
Nanyuki	40.37	38.80	38.47	38.47	37.95	38.26	30.71	33.36	38.63	44.44	44.69	48.20
Nyahururu	22.73	24.24	25.00	27.27	28.64	28.64	28.03	32.20	31.82	34.85	31.82	31.82
Ukunda	40.00	40.00	40.00	40.00	39.89	40.86	40.89	41.45	41.00	41.00	40.00	40.00
Kwale	39.00	39.33	38.00	38.57	38.42	38.50	-	42.00	42.00	41.40	41.78	40.00
Wundanyi	-	-	-	-	-	-	-	35.43	35.70	36.00	37.00	-
Voi	-	-	-	-	-	-	-	33.71	37.50	37.00	38.00	38.00
Mwatata	-	-	-	-	-	-	-	34.20	34.50	35.33	35.00	-
Mpeketoni	32.50	30.00	-	-	-	30.00	30.00	31.25	33.33	33.75	40.00	-
Mkunguni	50.00	-	-	-	-	50.00	50.00	50.00	50.00	50.00	50.00	50.00
Mokowe	-	-	-	-	-	-	-	-	-	50.00	50.00	50.00
Mwembe Tayari	43.00	40.00	40.00	40.00	40.00	40.00	40.00	40.00	41.67	40.00	40.00	40.00
Majengo	40.00	40.00	40.00	40.00	39.20	40.00	40.00	40.00	40.00	40.00	40.00	40.00
Sega	41.00	40.00	40.00	40.00	40.80	40.00	40.00	40.00	40.00	40.00	40.00	40.00
Kongowea	34.80	35.00	35.50	37.00	39.20	40.00	40.00	39.25	38.50	39.00	40.00	40.00
Hola	37.50	38.33	40.00	-	-	-	50.00	35.00	35.00	40.00	38.75	40.00
Garsen	-	-	-	-	-	-	-	-	-	40.00	-	-
Bura Tana	45.00	40.00	42.50	-	-	-	45.00	40.71	33.33	40.00	45.00	45.00
Runyenjes	27.27	32.05	24.24	36.36	48.00	24.24	22.73	24.24	27.50	29.74	33.12	36.36
Embu Town	27.27	27.27	22.73	22.73	-	26.14	28.79	31.82	29.09	31.82	32.96	36.36
Siakago	29.87	27.78	22.25	27.27	-	27.27	26.14	28.41	24.09	31.82	33.33	32.96
Mwingi	30.00	30.00	29.00	30.00	-	-	-	-	30.00	33.25	35.00	35.00
Kalundu	30.00	-	-	-	-	30.00	30.00	35.00	32.75	35.00	35.00	35.00
Machakos Town	35.00	35.00	35.00	30.00	34.58	30.00	30.00	31.25	35.00	42.00	35.00	35.00
Tawa	30.22	29.50	29.00	25.00	27.75	30.00	27.67	29.50	30.00	29.75	32.50	35.00
Tala	32.00	32.00	32.00	25.00	26.25	27.00	26.00	30.50	30.00	31.00	35.00	-
Maua	-	-	-	-	-	-	-	-	-	44.44	45.23	-
Kianjai	-	21.11	20.56	22.22	-	27.78	27.78	27.78	27.78	34.57	38.89	-
Gakromere	33.33	33.33	24.44	22.22	24.07	27.78	33.33	33.33	33.33	35.32	38.89	38.89
Chuka Town	47.04	36.13	31.25	34.94	30.00	34.03	34.90	31.74	30.99	35.44	34.86	-
Kathwana	-	-	33.33	30.55	-	-	32.75	34.79	29.57	33.11	35.28	38.97
Vote	30.00	30.00	29.33	25.00	27.75	28.00	28.17	28.63	-	30.80	33.00	-
Marsabit	39.25	38.00	34.75	35.50	40.00	37.71	37.20	37.00	36.00	39.33	40.00	38.00
Kibuye	30.46	32.61	30.43	31.87	33.34	35.18	35.10	29.95	34.06	33.96	34.58	37.09
Ahero	31.35	31.13	29.80	29.64	29.94	32.27	35.15	33.51	34.64	36.33	37.17	39.33
Kiboswa	31.49	32.98	32.98	30.78	31.95	33.55	33.56	33.17	38.69	45.06	35.57	36.81
Sondu	30.72	30.80	30.01	30.13	34.59	33.67	34.78	34.42	37.39	38.59	38.14	-
Bondo	27.43	28.41	30.12	31.82	31.82	32.87	37.46	-	-	-	-	-
Akala	-	-	-	-	-	-	-	34.66	36.36	38.32	37.08	-
Siaya	27.12	27.27	30.34	31.55	31.78	32.02	34.17	33.15	39.66	39.86	37.64	-
Ngya	31.47	27.27	31.92	31.64	30.69	32.74	33.69	31.78	34.72	36.77	35.05	33.53
Unguja	30.52	30.52	31.17	-	-	33.39	35.32	35.41	33.16	36.65	35.58	-
Kegonga	35.87	31.25	30.44	36.96	34.78	36.96	36.96	30.43	31.52	43.48	43.48	47.83
Homabay	27.77	26.85	27.50	27.87	28.13	32.00	-	-	32.00	34.12	36.12	36.18
Oyugis	24.27	24.09	24.64	27.67	-	32.00	-	-	26.38	32.35	36.67	37.50
Kehacha	34.78	30.43	28.26	-	28.26	26.09	25.00	26.09	34.78	-	39.13	43.48
Migori	34.78	-	28.26	30.43	33.70	34.78	26.09	23.08	26.09	34.78	39.13	43.48
Turkana	-	-	-	-	-	-	-	37.39	53.53	43.18	45.45	-
Kabarnet	-	-	-	-	-	34.05	-	42.83	-	-	-	-
Kimulot	-	-	26.00	-	-	32.00	32.50	36.00	32.00	32.00	-	-
Sotik	-	-	-	-	-	32.00	32.40	32.80	33.00	36.00	-	-
Fort Terman	-	-	-	-	-	-	-	-	30.00	30.00	-	-
Bomet	-	-	-	-	36.00	36.00	36.00	36.00	36.00	34.67	-	-
Muthurwa Narok	36.00	36.00	38.00	35.00	32.00	36.00	33.78	33.00	32.00	34.00	32.00	-
Nakuru Town	60.00	62.50	62.50	50.00	50.91	57.50	60.00	60.00	48.89	47.50	44.29	34.29
Mulot	29.50	-	-	-	33.91	35.08	33.60	33.14	-	-	-	-
Kitale	-	-	-	-	-	-	35.61	36.11	35.42	32.08	31.25	30.21
Kapenguria	-	-	28.00	28.00	28.00	32.00	-	-	-	-	-	-
Eldoret	24.00	27.00	27.50	28.00	32.00	32.00	32.00	32.00	32.00	32.00	32.00	32.00
Burn Forest	31.00	31.25	35.00	35.00	35.00	35.00	35.00	35.71	40.00	46.25	33.75	35.00
Turbo	25.00	26.88	30.00	32.50	35.00	35.00	35.00	37.14	37.50	34.00	28.75	29.38
Kipkaren	25.00	26.88	30.00	32.50	35.00	35.00	35.00	37.86	40.00	34.00	30.54	29.38
Iten	23.96	24.79	28.86	26.14	29.40	34.12	34.85	34.48	32.67	34.12	-	27.23
Kajiado	50.00	40.00	50.00	50.00	47.33	46.67	44.00	42.50	50.00	45.00	50.00	-
Bungoma Town	26.97	24.00	26.99	27.55	29.17	35.61	36.42	30.27	30.11	28.87	32.43	34.41
Kimilili	-	-	-	-	-	-	35.05	30.27	-	21.81	26.54	-
Kapsokwony	-	-	-	-	-	-	-	-	35.16	25.67	26.80	28.28
Bumala	35.71	35.71	35.71	35.71	35.71	33.33	41.43	45.24	40.48	40.48	40.48	40.48
Busia Town	35.71	38.10	38.10	38.10	38.10	42.86	41.67	39.29	36.91	40.48	40.48	40.48
Butere	27.73	30.68	31.82	43.22	35.00	40.57	33.85	21.29	23.10	28.25	31.82	38.64
Kakamega	33.22	40.00	40.00	37.50	38.75	40.00	40.63	38.33	32.50	34.38	35.00	40.83
Mumias	28.25	31.82	30.69	30.69	37.50	40.00	39.07	31.00	24.00	26.00	29.50	32.00
Mundeta	26.19	26.19	27.38	27.78	30.95	35.71	34.28	32.14	30.95	34.85	32.74	33.33
Cheptula	28.57	26.19	-	30.95	33.33	35.71	37.01	35.71	34.52	32.14	34.92	35.71
Mbale	25.40	30.16	27.74	30.00	33.89	-	-	35.00	35.00	32.50	-	-
Muthurwa	40.91	42.86	42.50	40.91	42.86	45.00	42.86	42.86	45.45	42.86	45.45	47.62
Kawangware	45.45	42.86	42.86	42.86	45.24	47.50	45.24	43.18	45.24	45.34	47.62	47.62
Burra	45.00	45.00	41.67	41.67	41.67	50.00	45.00	45.00	50.00	50.00	50.00	50.00
Gikomba	36.36	45.24	42.86	42.86	42.86	42.86	40.91	40.00	42.86	43.18	45.24	45.45
Kangemi	42.86	45.00	45.45	45.00	42.86	45.00	42.86	42.86	47.62	45.00	45.24	45.24
Korokocho	37.50	42.86	40.91	42.86	40.91	42.50	42.86	40.91	42.86	45.00	42.86	42.86
Toi	45.00	42.86	42.86	42.50	40.91	42.86	42.86	42.50	42.86	45.00	42.86	45.00
Total	34.48	34.97	33.92	33.80	35.50	35.92	35.59	35.64	35.10	36.34	37.05	36.93

Table 9(b): Monthly Retail Prices for Dry Maize, 2017 (per Kg)

Month/Town	JAN	FEB	MAR	APR	MAY	JUNE	JULY	AUG	SEP	OCT	NOV	DEC
Kiambu	40.00	50.00	-	-	-	-	-	-	-	-	-	-
Limuru	40.00	50.00	-	-	-	-	-	-	-	-	-	-
Thika	45.00	55.00	-	-	-	-	-	47.50	40.00	-	-	-
Kutus	40.33	50.84	51.09	-	-	-	-	-	-	-	-	-
Sagana	45.45	-	-	-	-	-	-	-	-	-	-	-
Kerugoya	43.20	50.54	53.36	-	-	-	-	-	-	-	-	-
Githumu	44.05	47.62	50.00	57.14	60.95	61.90	60.32	-	-	-	-	-
Muthithi	-	-	45.24	-	-	-	-	-	-	-	-	-
Makuyu	44.76	47.62	50.79	-	-	-	-	45.00	40.00	-	-	-
Kiriaini	-	-	55.00	60.00	-	-	-	-	-	-	-	-
Oi Kalou	45.00	50.00	50.00	48.81	50.00	63.97	65.00	-	-	-	-	-
Ndaragwa	-	48.81	40.91	45.24	45.24	-	62.26	-	-	-	-	-
Nyeri	22.44	25.00	23.81	27.78	32.50	35.00	-	-	-	-	-	-
Endarasha	22.68	23.65	30.82	28.04	30.43	31.02	-	55.56	62.97	68.63	55.56	-
Karatina	21.97	21.43	20.24	22.62	28.83	-	-	44.44	51.25	62.18	44.44	-
Gakindu	23.43	24.23	26.50	28.75	30.00	30.00	-	50.00	50.00	50.00	-	-
Nanyuki	44.08	54.26	53.22	61.58	67.50	66.67	65.74	60.00	52.50	50.00	-	-
Nyahururu	35.69	44.91	46.24	53.80	60.32	76.44	72.37	-	-	-	-	-
Ukunda	42.78	43.00	43.00	46.29	57.50	55.00	52.00	-	-	-	-	-
Kwale	44.20	42.50	42.50	46.75	62.00	56.67	58.67	-	-	-	-	-
Wundanyi	40.00	45.00	45.00	-	-	-	-	-	-	-	-	-
Voi	41.33	42.50	45.00	-	-	-	50.00	90.00	58.33	-	-	-
Mwatate	40.67	44.00	46.00	-	-	-	-	-	-	-	-	-
Mwembe Tayari	46.00	43.75	50.00	62.50	82.00	82.50	66.25	67.50	-	-	-	-
Majengo	50.00	46.25	50.00	62.50	90.00	82.50	62.50	-	-	-	-	-
Sega	48.00	47.50	51.25	63.75	96.67	75.00	60.00	50.00	45.00	45.00	-	-
Kongowea	46.00	48.75	53.75	56.25	58.00	60.00	56.25	50.00	53.13	50.28	-	-
Hola	48.00	37.50	48.33	67.50	47.50	58.00	50.00	43.18	36.36	36.36	-	-
Bura Tana	42.00	35.00	50.00	50.00	50.00	50.00	50.00	45.45	43.63	40.91	-	-
Runyenjes	44.32	45.45	45.45	45.45	45.45	52.53	45.45	54.55	46.59	36.36	-	-
Embu Town	43.18	45.45	45.45	48.48	54.55	54.55	47.73	-	-	-	-	-
Siakago	40.91	-	45.45	-	-	-	-	-	-	-	-	-
Tharaka	40.91	43.18	45.45	45.45	45.45	50.00	45.45	-	-	40.00	-	-
Mwingi	-	45.00	-	-	-	-	-	-	-	-	-	-
Migwaini	-	-	-	-	-	-	50.00	50.00	46.67	40.00	-	-
Kalundu	43.00	43.67	50.00	50.00	-	-	50.00	-	-	-	-	-
Machakos Town	44.00	48.33	-	52.50	-	63.13	60.00	50.00	50.00	-	-	-
Tawa	41.67	45.00	45.00	47.57	50.50	53.40	51.00	-	38.89	38.89	-	-
Tala	40.00	43.00	-	42.00	-	-	-	51.85	41.66	44.44	44.44	-
Maua	52.97	66.67	66.67	-	-	-	-	56.08	-	-	-	-
Kianjai	-	-	-	-	-	-	47.78	-	-	-	-	-
Gakoromere	48.33	55.56	47.92	50.00	51.11	54.45	53.70	50.00	40.00	-	-	-
Chuka Town	49.42	51.41	-	-	-	-	-	-	-	60.00	-	-
Kathwana	41.67	25.25	55.56	53.69	-	-	-	46.25	57.50	70.00	-	-
Wote	41.67	44.75	45.00	46.43	52.40	59.00	54.00	-	-	-	37.50	-
Kibirigo	-	-	-	-	-	-	40.33	-	-	-	-	-
Riochanda	-	-	-	-	-	-	43.06	-	-	-	-	-
Nyabite	-	-	-	-	-	-	45.83	-	-	-	-	-
Bondo	41.94	44.67	50.11	50.06	-	-	-	-	-	-	-	-
Siaya	-	-	51.49	53.69	-	-	-	-	-	-	-	-
Ngija	37.16	41.39	52.66	-	-	-	-	-	-	-	-	-
Unguja	41.92	42.77	51.69	50.05	-	-	-	-	-	-	-	-
Turkana	54.59	57.98	51.09	-	-	-	-	-	38.46	58.60	58.33	-
Kabarnet	40.28	41.30	43.33	-	-	66.67	66.67	-	-	-	-	-
Kimulot	39.11	44.00	56.00	52.00	57.00	60.00	52.00	-	-	44.00	-	-
Muthurwa Narok	38.00	47.00	54.00	56.00	56.00	53.85	55.67	62.50	60.00	-	-	-
Nakuru Town	37.22	55.33	60.00	61.54	63.33	66.00	66.67	-	50.00	39.90	27.60	-
Kitale	33.33	33.33	38.89	48.96	54.17	57.29	48.00	-	-	39.57	29.10	-
Eldoret	32.00	32.00	38.00	40.00	48.00	53.00	50.00	-	40.06	32.41	29.17	-
Burn Forest	35.00	35.00	41.25	50.00	60.63	58.64	52.17	45.00	45.00	37.17	-	-
Turbo	28.00	31.50	32.00	37.00	49.00	52.00	48.00	34.78	31.82	30.89	-	-
Kipkaren	30.80	32.67	32.00	39.00	50.00	54.00	45.51	32.58	32.90	29.78	-	-
Iten	33.40	40.29	41.38	65.34	51.30	57.23	50.00	32.58	35.28	30.89	-	-
Kajiado	47.50	50.00	-	50.00	61.67	60.00	-	41.38	38.86	32.50	-	-
Kapkateny	-	-	-	-	-	66.67	-	-	50.00	48.44	42.00	-
Bungoma Town	35.49	-	-	-	-	-	-	-	-	-	-	-
Kimilili	32.99	-	-	-	-	-	-	-	-	-	-	-
Kapsokwony	34.22	-	-	-	-	-	-	-	-	-	-	-
Butere	34.67	38.00	40.00	-	-	-	-	-	-	-	-	-
Kakamega	41.92	50.00	50.00	-	-	-	-	29.00	29.59	31.25	-	-
Mumias	34.80	37.00	40.00	-	-	-	-	35.00	33.75	37.50	-	-
Mundeta	-	-	-	57.14	57.14	58.33	-	28.00	27.83	30.21	-	-
Cheptula	37.57	42.27	46.91	57.14	57.14	55.55	57.14	44.45	42.86	33.33	-	-
Mbale	40.00	47.50	50.00	52.50	56.61	59.52	57.14	41.27	33.33	33.33	-	-
Muthurwa	50.00	54.55	55.00	52.38	50.00	52.38	65.00	47.62	42.86	38.10	-	-
Kawangware	47.62	47.62	47.62	47.62	47.62	47.62	68.18	64.32	59.78	59.88	52.27	-
Burma	50.00	50.00	60.00	65.00	65.00	60.00	70.00	65.04	62.66	60.34	52.50	-
Gikomba	47.62	54.55	52.38	52.38	65.00	50.00	65.00	65.00	60.00	60.00	50.00	-
Kangemi	50.00	47.50	50.00	47.50	54.55	59.32	55.00	62.50	60.00	58.69	50.00	-
Korokocho	45.00	47.62	47.62	50.00	50.00	55.00	65.00	56.07	55.00	53.75	50.00	-
Toi	47.62	50.00	57.14	63.64	61.90	68.18	71.43	62.50	61.07	53.48	-	-
Total	41.12	45.74	47.40	49.70	53.51	57.62	53.88	61.91	60.00	60.72	50.00	-

Table 9(c): Average Monthly Retail Prices for Dry Beans, 2016 (per Kg)

Month/Town	JAN	FEB	MAR	APR	MAY	JUNE	JULY	AUG	SEPT	OCT	NOV	DEC
Kiambu	-	-	80.00	80.00	80.00	75.00	-	-	75.00	85.00	80.00	80.00
Limuru	-	-	75.00	80.00	75.00	77.50	-	-	75.00	77.50	75.00	80.00
Thika	-	85.00	90.00	-	-	80.00	80.00	80.00	80.00	80.00	80.00	-
Gatundu	-	-	81.67	74.38	73.00	71.25	80.00	78.75	78.75	80.00	-	-
Kutus	63.93	60.87	63.56	65.15	68.18	80.00	65.22	65.30	68.18	68.18	69.81	68.18
Sagana	70.49	66.15	67.71	67.80	69.57	65.22	68.18	68.93	74.63	80.04	78.26	80.04
Kerugoya	61.41	65.90	64.22	66.09	64.53	69.81	65.22	67.43	70.46	71.21	68.18	68.18
Muthithi	63.64	60.23	79.55	63.64	67.27	68.18	67.42	63.64	63.64	68.18	63.64	67.27
Makuyu	63.64	65.17	65.17	61.79	63.64	-	-	-	-	-	65.15	63.64
Kiriaini	59.09	63.64	63.64	63.64	-	-	-	-	-	68.18	67.27	65.91
Oi Kalou	-	-	-	-	-	-	-	111.11	80.00	80.00	82.11	95.00
Ndaragwa	-	-	-	-	-	-	-	-	80.00	73.81	72.03	-
Nyeri	79.37	79.68	81.48	80.00	80.22	78.89	81.60	80.00	80.00	87.04	93.33	93.33
Endarasha	85.00	79.05	87.50	90.00	71.25	71.25	76.05	68.29	66.71	63.83	64.47	64.00
Karatina	97.62	91.90	73.90	68.94	71.67	70.52	84.85	77.96	79.21	79.21	78.72	79.21
Gakindu	76.25	73.38	75.15	73.53	77.58	77.37	75.55	78.33	83.33	83.33	84.17	83.71
Nanyuki	86.92	83.12	81.99	76.52	75.23	72.56	63.48	63.57	74.33	88.89	89.14	96.40
Nyahururu	69.32	65.91	68.18	81.82	73.98	71.59	68.19	56.82	59.09	66.67	61.36	65.15
Ukunda	82.50	83.33	81.25	82.86	82.11	80.00	80.00	80.00	80.50	77.00	75.00	100.00
Kwale	80.00	80.00	80.00	80.00	80.00	80.00	80.00	80.00	80.00	79.00	82.00	90.00
Wundanyi	-	-	-	-	-	-	-	91.07	92.00	87.50	92.50	-
Voi	-	-	-	-	-	-	-	85.00	85.00	82.50	82.50	82.50
Mwatate	-	-	-	-	-	-	-	79.00	83.75	85.00	85.83	-
Mpeketoni	81.25	82.50	-	-	-	80.00	80.00	80.00	87.50	81.67	85.00	95.00
Mkunguni	90.00	-	-	-	-	100.00	92.00	90.00	90.00	96.67	100.00	95.00
Mokowe	-	-	-	-	-	-	-	-	-	100.00	100.00	96.25
Mwembe Tayari	95.00	90.00	91.25	93.75	92.00	90.00	90.00	85.00	90.00	95.00	100.00	-
Majengo	88.00	90.00	87.50	88.75	90.00	90.00	90.00	90.00	90.00	90.00	90.00	90.00
Sega	88.00	90.00	90.00	90.00	94.00	95.00	86.00	83.75	86.25	90.00	100.00	100.00
Kongowea	77.00	71.75	68.75	80.00	81.00	86.67	82.00	80.00	80.00	90.00	100.00	100.00
Hola	100.00	93.33	90.00	-	-	-	90.00	85.00	86.67	100.00	90.00	90.00
Garsen	-	-	-	-	-	-	-	-	80.00	100.00	-	-
Bura Tana	100.00	93.33	85.00	-	-	-	95.00	97.14	90.00	90.00	96.67	90.00
Runyenyjes	61.31	82.75	56.94	76.02	89.24	56.95	59.03	55.56	58.34	61.81	69.05	65.63
Embu Town	64.17	54.17	67.50	58.33	-	53.67	53.50	50.70	60.25	68.12	72.83	71.20
Siakago	43.45	48.61	52.08	50.00	-	58.33	55.21	53.27	52.50	65.83	83.33	67.71
Mwingi	70.00	60.00	72.50	75.00	-	-	-	-	80.00	71.88	70.00	73.33
Kalundu	60.00	-	-	-	-	81.67	81.67	86.67	80.00	-	77.50	75.45
Machakos Town	80.00	80.00	80.00	80.00	80.00	80.00	80.00	80.00	80.00	80.00	80.00	80.00
Tawa	92.22	90.00	90.00	75.00	72.50	75.00	74.17	83.75	80.00	97.50	105.00	80.00
Tala	74.09	70.00	70.00	70.00	72.50	70.00	70.00	77.50	70.00	72.00	77.50	-
Maua	-	-	-	-	-	-	-	-	-	76.54	77.78	-
Kianjai	-	47.22	49.31	55.56	-	55.56	54.45	55.56	55.56	71.61	83.33	-
Gakoromere	62.96	55.56	59.72	61.11	61.11	57.41	66.67	65.28	64.82	70.24	83.33	86.11
Chuka Town	74.20	75.65	67.72	68.99	72.22	104.87	83.41	62.41	76.37	66.00	64.08	-
Kathwana	-	68.56	72.22	67.07	-	-	51.78	61.87	68.93	77.22	70.30	85.35
Wote	92.22	100.00	90.00	60.00	75.00	72.50	72.50	81.25	-	91.00	110.00	-
Marsabit	73.13	71.80	73.00	77.50	80.00	77.14	75.00	68.75	77.50	81.67	70.00	75.00
Kibuye	65.63	68.75	68.75	68.44	70.54	71.51	67.89	65.71	67.71	69.73	69.01	71.27
Ahero	77.48	71.15	66.70	66.67	67.25	63.36	62.80	65.22	64.40	67.97	69.21	69.57
Kiboswa	66.30	70.04	67.93	67.71	69.95	69.50	67.83	69.12	67.66	68.48	67.71	67.87
Sondu	69.62	69.24	67.63	68.55	71.15	66.67	68.12	68.55	64.88	69.06	71.43	69.57
Bondo	83.13	88.48	85.67	80.63	80.04	80.42	81.73	-	-	-	-	-
Akala	-	-	-	-	-	-	-	79.46	79.65	81.78	83.64	-
Siaya	63.31	70.08	71.54	75.46	69.62	74.98	77.43	66.51	85.53	84.16	85.02	-
Ngija	69.65	65.95	70.72	75.31	74.51	76.34	77.22	70.72	78.52	91.85	83.97	87.32
Unguja	68.58	73.70	69.12	-	-	75.13	80.57	79.79	80.05	80.00	75.91	-
Kegonga	88.46	66.00	54.00	64.00	68.54	96.00	96.00	80.00	80.00	88.00	76.00	92.00
Homabay	76.41	89.56	79.06	88.54	77.90	76.63	-	-	73.32	73.47	73.00	73.21
Oyugis	59.31	60.94	59.26	70.00	-	76.63	-	-	61.77	63.71	73.46	60.69
Kehacha	74.00	58.44	46.00	-	72.00	73.64	72.00	72.00	74.00	-	74.00	88.00
Migori	67.31	-	44.00	70.00	66.00	68.00	60.00	48.00	60.00	60.00	72.00	84.00
Turkana	-	-	-	-	-	-	72.61	-	50.73	-	-	-
Kabarnet	-	-	-	-	-	-	70.40	72.00	72.00	60.00	60.00	-
Kimulot	-	-	60.00	-	-	-	71.20	78.09	69.00	68.00	-	-
Sotik	-	-	-	-	-	-	-	-	58.36	59.69	-	-
Fort Ternan	-	-	-	-	-	-	-	-	-	-	-	-
Bomet	-	-	-	-	77.89	76.94	78.53	71.68	73.15	79.53	-	-
Muthurwa Narok	80.00	74.67	90.91	74.00	75.72	68.00	66.67	77.00	68.00	74.00	74.00	-
Nakuru Town	100.00	100.00	105.00	120.00	115.45	70.00	68.00	62.86	71.11	80.00	57.50	74.29
Mulot	60.80	-	-	-	71.61	70.19	80.65	71.81	-	-	-	-
Kitale	-	-	-	-	-	-	56.99	72.37	71.10	60.00	60.58	68.75
Kapenguria	-	-	69.23	69.23	69.23	69.23	-	-	-	-	-	-
Eldoret	85.84	88.75	88.75	95.00	100.00	105.00	100.00	77.92	79.55	79.55	86.37	90.91
Burn Forest	76.36	81.82	84.09	90.91	90.91	90.91	82.83	79.87	77.27	74.93	85.26	92.05
Turbo	74.29	82.50	87.50	90.00	100.00	90.00	87.22	82.14	81.25	81.67	82.42	87.50
Kipkaren	74.29	81.25	86.25	90.00	100.00	96.67	90.00	85.71	80.00	68.58	67.50	87.50
Iten	59.89	60.23	61.25	61.76	62.61	62.61	57.17	61.25	60.23	62.61	-	60.74
Kajiado	80.00	110.50	102.04	102.04	92.32	87.50	92.22	90.00	100.00	100.00	96.72	-
Bungoma Town	82.76	81.01	75.56	81.49	-	73.68	72.85	73.56	78.44	78.95	66.50	76.92
Kimilili	-	-	-	-	-	-	54.17	73.56	-	64.07	74.46	-
Kapsokwony	-	-	-	-	-	-	-	-	60.55	51.41	57.45	65.13
Bumala	85.71	95.24	95.24	95.24	95.24	64.29	72.38	66.67	67.46	69.05	69.05	83.33
Busia Town	80.95	95.24	95.24	95.24	71.43	76.19	71.43	69.05	69.05	71.43	69.05	90.48
Butere	65.51	69.27	77.28	91.64	72.50	-	69.26	68.18	82.79	82.73	73.91	74.55
Kakamega	89.39	85.45	86.36	109.09	100.00	77.27	78.41	93.94	95.46	93.18	90.91	93.94
Mumias	67.98	70.36	75.00	90.91	110.00	100.00	86.14	88.64	90.91	89.09	81.82	86.37
Mundeta	72.73	72.73	86.37	81.82	68.18	77.27	75.46	86.37	81.82	83.84	72.73	81.82
Cheptula	75.76	72.73	-	84.09	81.82	81.82	82.23	79.09	81.82	81.82	77.27	79.55
Mbale	81.82	87.88	89.72	88.89	86.29	-	-	85.71	85.71	-	-	-
Muthurwa	88.64	95.24	90.91	95.00	95.00	95.00	86.36	90.48	95.00	90.48	95.00	95.24
Kwangware	95.24	90.91	92.86	95.24	90.91	95.24	90.91	90.91	95.24	90.91	-	90.91
Burma	90.00	95.00	95.00	95.00	95.00	100.00	90.00	90.91	90.91	95.00	100.00	100.00
Gikomba	72.73	95.00	95.00	95.24	95.24	95.24	90.48	85.71	90.00	90.00	90.91	95.24
Kangemi	95.00	90.91	95.24	95.00	90.48	95.00	81.82	90.48	95.00	90.48	95.24	95.24
Korokocho	72.73	90.00	92.86	90.48	95.00	86.36	90.48	86.36	90.48	90.91	90.48	90.00
Toi	90.48	95.00	95.00	90.48	95.00	90.48	85.71	85.71	92.86	88.64	90.48	95.24
Total	76.09	80.68	76.74	79.10	78.63	75.63	75.27	74.06	74.36	76.55	77.56	78.40

Table 9(d): Average Monthly Retail Prices for Dry Beans, 2017 (per Kg)

Month/Town	JAN	FEB	MAR	APR	MAY	JUNE	JULY	AUG	SEP	OCT	NOV	DEC
Kiambu	80.00	95.00	-	-	-	-	-	-	-	-	-	-
Limuru	77.50	95.00	-	-	-	-	-	-	-	-	-	-
Thika	80.00	80.00	-	-	-	-	-	70.00	75.00	-	-	-
Kutus	70.15	82.35	81.40	-	-	-	-	-	-	-	-	-
Sagana	88.43	-	-	-	-	-	-	-	-	-	-	-
Kerugoya	69.09	71.94	77.28	-	-	-	-	-	-	-	-	-
Githumu	70.69	70.45	75.00	76.14	77.27	77.27	75.76	-	-	-	-	-
Muthithi	-	-	70.46	-	-	-	-	-	-	-	-	-
Makuyu	68.18	71.59	75.76	-	-	-	-	72.73	72.73	-	-	-
Kiriaini	-	-	68.18	72.73	-	-	-	-	-	-	-	-
Oi Kalou	90.00	93.18	100.00	92.37	51.32	115.00	106.67	-	-	-	-	-
Ndaragwa	77.50	78.38	76.19	80.00	80.00	-	90.00	-	-	-	-	-
Nyeri	46.51	46.97	47.73	48.81	52.46	52.02	-	-	-	-	-	-
Endarasha	51.28	44.44	66.37	68.60	63.69	63.10	-	138.58	129.03	110.11	111.11	-
Karatina	41.77	44.06	43.93	45.15	49.79	-	-	111.11	139.84	134.01	111.11	-
Gakindu	50.18	55.66	56.98	58.98	59.35	57.29	-	110.00	100.00	100.00	-	-
Nanyuki	88.17	107.57	118.00	118.92	132.54	134.08	111.11	100.00	100.00	100.00	-	-
Nyahururu	67.45	88.54	109.21	125.23	128.59	142.86	148.26	-	-	-	-	-
Ukunda	100.00	100.00	100.00	100.00	122.00	115.00	101.67	-	-	-	-	-
Kwale	99.00	98.75	98.75	100.00	127.00	118.33	106.67	-	-	-	-	-
Wundanyi	95.00	95.00	95.00	-	-	-	-	-	-	-	-	-
Voi	88.33	88.75	92.50	-	-	-	95.00	120.00	-	110.00	-	-
Mwatate	90.83	92.50	92.50	-	-	-	-	155.00	-	-	-	-
Mwembe	-	-	-	-	-	-	-	122.86	-	-	-	-
Tayari	110.00	95.00	120.00	140.00	132.00	112.50	115.00	-	-	-	-	-
Majengo	100.00	97.50	125.00	135.00	128.00	122.50	125.00	-	-	-	-	-
Mackinon	100.00	100.00	135.00	140.00	152.00	142.50	130.00	90.00	90.00	94.44	-	-
Sega	130.00	100.00	115.00	135.00	130.00	110.00	117.50	-	100.00	-	-	-
Kongowea	92.00	95.00	112.50	130.00	144.00	105.00	92.50	90.00	90.00	90.00	-	-
Hola	94.00	90.00	98.33	115.00	100.00	116.00	100.00	62.50	65.11	66.67	-	-
Garsen	-	80.00	80.00	80.00	100.00	100.00	-	69.57	68.70	66.67	-	-
Bura Tana	90.00	100.00	101.67	96.00	100.00	113.33	93.33	66.67	70.84	62.50	-	-
Runyenjes	64.06	73.44	78.64	77.43	79.58	73.15	63.54	-	-	-	-	-
Embu Town	68.48	69.57	75.00	75.85	75.95	70.65	68.12	-	-	-	-	-
Siakago	50.00	-	62.50	-	-	-	-	-	-	108.57	-	-
Tharaka	62.50	61.46	65.28	73.61	58.33	65.63	54.17	-	-	-	-	-
Mwingi	-	80.00	-	-	-	-	-	85.00	96.67	90.00	-	-
Migwaini	-	-	-	-	-	-	97.50	-	-	-	-	-
Kalundu	75.00	83.33	100.00	120.00	-	-	100.00	100.00	100.00	-	-	-
Machakos Town	84.17	87.50	-	105.00	-	103.75	95.00	-	85.42	91.67	-	-
Tawa	100.00	100.00	92.50	98.57	108.00	98.50	84.00	111.11	111.11	111.11	111.11	-
Tala	78.33	81.25	-	80.00	-	-	-	95.79	-	-	-	-
Maua	82.69	109.52	119.05	-	-	-	-	-	-	-	-	-
Kianjai	-	-	-	-	-	-	90.83	85.00	85.00	-	-	-
Gakoromere	97.78	100.00	104.17	113.89	124.44	124.44	99.07	-	-	120.00	-	-
Chuka Town	88.50	79.61	-	-	-	-	-	55.00	61.25	70.00	-	-
Kathwana	89.54	-	80.00	93.52	-	-	-	-	-	-	86.96	-
Wote	100.00	85.00	85.00	97.86	97.14	100.00	78.33	-	-	-	-	-
Kibirigo	-	-	-	-	-	-	85.75	-	-	-	-	-
Riochanda	-	-	-	-	-	-	86.96	-	-	-	-	-
Nyabite	-	-	-	-	-	-	82.48	-	-	-	-	-
Bondo	93.22	108.55	104.31	-	-	-	-	-	-	-	-	-
Siaya	-	-	103.62	103.89	-	-	-	-	-	-	-	-
Ngiya	83.52	97.92	112.00	-	-	-	-	-	-	-	-	-
Unguja	80.92	84.20	100.58	107.68	-	-	-	-	75.00	115.91	111.11	-
Turkana	76.73	85.68	82.50	-	-	-	-	-	-	-	-	-
Kabarnet	113.89	100.00	111.11	-	-	116.30	144.44	-	-	78.67	-	-
Kimulot	73.60	80.00	80.00	80.00	97.42	100.00	68.00	62.50	63.33	-	-	-
Muthurwa	67.00	77.00	95.00	80.00	92.00	96.00	93.50	-	88.89	89.60	81.67	-
Narok	-	-	-	-	-	-	-	-	-	-	-	-
Nakuru Town	58.89	85.33	83.85	82.31	83.00	76.00	75.00	-	-	88.33	85.15	-
Kitale	73.80	78.40	81.11	83.33	87.89	86.46	76.04	-	78.79	74.62	75.00	-
Eldoret	87.27	81.82	90.91	95.46	113.64	105.68	90.91	81.82	84.42	90.91	-	-
Burn Forest	87.27	81.82	88.64	93.18	112.50	103.41	90.91	81.82	83.84	81.82	-	-
Turbo	88.00	90.00	91.25	105.00	125.00	113.75	100.00	90.00	90.00	96.67	-	-
Kipkaren	88.00	90.00	97.50	105.00	125.00	113.75	96.33	90.00	90.00	90.00	-	-
Iten	76.22	81.67	92.38	102.09	100.66	88.47	81.67	72.48	83.51	83.05	-	-
Kajiado	109.23	114.29	97.50	98.57	110.00	110.00	-	-	96.00	113.13	124.17	-
Kapkateny	-	-	-	-	-	111.11	-	-	-	-	-	-
Bungoma Town	73.34	-	-	-	-	-	-	-	-	-	-	-
Kimilili	62.93	-	-	-	-	-	-	-	-	-	-	-
Kapsokwony	65.82	-	-	-	-	-	-	-	-	-	-	-
Butere	68.18	81.82	90.91	-	-	-	-	89.77	72.73	81.82	-	-
Kakamega	86.37	106.82	116.67	-	-	-	-	96.59	105.69	100.00	-	-
Mumias	86.73	93.18	109.09	-	-	-	-	78.41	84.09	100.00	-	-
Mundeta	-	-	-	86.37	90.91	90.91	-	90.91	90.91	81.82	-	-
Cheptula	82.83	88.64	90.91	92.73	95.45	74.24	68.18	84.85	81.82	81.82	-	-
Mbale	95.24	95.24	95.24	95.24	91.99	90.91	90.91	87.88	90.91	84.85	-	-
Muthurwa	100.00	100.00	104.55	95.24	100.00	104.76	104.76	106.93	104.76	102.38	100.00	-
Kawangware	90.91	90.91	90.91	90.91	90.91	90.91	95.24	100.00	100.12	97.62	100.00	-
Burma	100.00	100.00	120.00	104.76	100.00	95.00	100.00	100.00	100.00	100.00	100.00	-
Gikomba	100.00	104.76	100.00	104.76	105.00	100.00	110.00	107.38	107.38	105.00	95.24	-
Kangemi	95.45	100.00	95.24	100.00	100.00	102.50	100.00	100.00	102.50	100.00	100.00	-
Korokocho	95.24	95.24	100.00	95.24	95.24	100.00	100.00	100.00	100.00	96.83	-	-
Toi	95.24	95.24	100.00	100.00	95.24	100.00	109.52	102.38	100.00	102.38	100.00	-
Total	80.31	85.87	89.15	89.08	96.25	97.91	94.47	89.63	87.39	95.18	110.18	

Table 10: Exports of Coffee and Tea

Month	Coffee*		Tea	
	Quantity (MT)	Value (KSh Million)	Quantity (MT)	Value (KSh Million)
2016				
January	2,448.81	1,184.30	36,574.84	11,013.11
February	3,276.64	1,636.25	43,292.10	12,200.37
March	4,168.55	2,206.07	37,571.21	9,886.75
April	4,803.85	2,540.37	39,312.62	9,516.83
May	4,814.01	2,170.48	44,901.21	10,657.68
June	4,982.70	2,369.10	52,175.28	12,613.19
July	3,986.91	1,797.66	42,751.15	10,679.32
August	3,718.69	1,636.87	39,672.66	9,993.36
September	3,172.75	1,398.50	33,528.46	8,453.73
October	3,116.14	1,489.24	29,655.58	7,547.50
November	3,928.60	1,690.64	41,138.04	11,123.43
December	2,885.77	1,251.95	39,396.12	10,811.39
2017				
January	3,213.60	1,552.64	46,434.40	14,072.07
February	3,868.37	2,093.59	33,897.69	10,879.80
March	5,447.43	3,231.40	33,662.22	10,693.17
April	4,200.84	2,697.57	32,091.19	9,991.02
May	5,423.67	3,116.68	39,328.77	12,354.06
June	4,442.89	2,500.75	42,369.54	13,485.25
July	3,597.63	1,971.05	41,437.02	13,442.30
August	2,648.78	1,311.27	29,628.45	9,268.76
September	3,133.57	1,516.10	43,469.19	13,569.85
October	2,335.03	1,121.21	41,172.86	13,147.28
November	3,195.62	1,565.89	39,127.97	12,712.92

Source: KRA Customs and Border Control Services Department

Table 11: Monthly Exports of Fresh Horticultural Produce

Months	Cut Flowers				Fruits				Vegetables			
	2016		2017*		2016		2017*		2016		2017*	
	Quantity (MT)	Value (KSh Million)	Quantity (MT)	Value (KSh Million)	Quantity (MT)	Value (KSh Million)	Quantity (MT)	Value (KSh Million)	Quantity (MT)	Value (KSh Million)	Quantity (MT)	Value (KSh Million)
January	10,016.45	8,398.53	12,843.99	8,780.86	3,385.51	605.03	5,870.92	819.86	6,758.37	1,923.64	8,318.12	1,954.37
February	13,717.40	8,073.17	15,574.00	8,616.81	3,807.98	561.37	4,919.09	678.09	4,811.68	1,516.29	6,958.96	1,638.97
March	12,378.88	8,461.59	14,394.77	11,108.19	6,129.92	852.27	6,151.45	853.46	5,804.76	1,825.83	7,345.77	1,644.29
April	12,320.47	5,388.81	13,620.42	6,330.60	7,865.70	1,073.93	6,361.80	832.96	5,744.89	2,147.97	5,675.43	1,813.27
May	11,641.17	4,779.79	16,178.39	7,522.23	4,748.73	643.76	7,178.31	954.50	4,870.06	1,580.73	7,274.99	1,814.03
June	8,904.29	6,031.49	12,245.53	6,280.96	4,245.78	562.91	6,821.85	1,187.28	7,007.28	3,698.28	7,203.98	1,927.01
July	7,920.62	3,373.73	10,163.25	4,734.88	4,274.02	675.38	5,475.41	1,066.66	5,785.96	1,527.75	6,539.21	2,858.01
August	9,284.47	4,909.50	11,734.28	5,066.62	4,119.43	776.39	3,908.37	847.38	6,245.95	1,607.08	7,713.89	1,656.24
Sept	10,605.34	4,465.33	12,727.64	6,864.18	2,278.11	377.65	3,440.80	701.81	8,040.14	1,815.98	7,648.91	2,061.35
October	12,542.75	6,072.96	14,564.37	6,747.46	2,297.36	365.15	1,815.36	368.84	8,486.92	1,873.98	7,953.25	1,891.61
Nov	12,098.36	5,354.67	14,168.98	6,943.91	2,417.37	377.66	2,525.36	480.01	8,256.31	1,909.08	7,874.39	2,093.66
Dec	12,228.15	5,519.89			3,087.92	445.76			6,978.28	1,940.17		
Total	133,658.33	70,829.47			48,657.81	7,317.27			78,790.59	23,366.77		

Source: Horticultural Directorate

* Provisional

Table 12: External Trade

Month	KSh Million					
	Domestic Exports	Re-Exports	Total Exports	Total Imports	Volume of Trade	Home use Imports
2016						
January	41,031.83	6,991.69	48,023.52	106,482.97	154,506.49	100,529.56
February	42,955.50	9,334.93	52,290.42	100,457.80	152,748.23	95,003.53
March	46,509.30	7,520.38	54,029.68	114,420.80	168,450.47	110,210.01
April	42,828.78	3,470.23	46,299.01	124,810.31	171,109.33	118,549.72
May	45,497.69	4,364.02	49,861.71	116,168.50	166,030.20	110,031.89
June	42,941.32	5,271.72	48,213.04	127,216.89	175,429.93	117,981.12
July	40,935.33	7,044.47	47,979.80	117,319.89	165,299.69	109,567.16
August	41,026.92	6,057.20	47,084.12	132,923.93	180,008.05	111,020.07
September	39,975.14	5,927.84	45,902.99	124,427.54	170,330.53	118,410.20
October	35,540.71	6,509.43	42,050.14	115,177.82	157,227.96	108,844.70
November	44,794.89	4,857.03	49,651.92	129,331.33	178,983.25	125,029.98
December	42,510.41	4,170.09	46,680.50	123,007.09	169,687.59	105,460.35
2017						
January	43,703.87	5,136.57	48,840.44	150,736.36	199,576.79	143,572.71
February	43,846.59	4,110.68	47,957.27	130,839.93	178,797.20	125,858.50
March	47,482.41	6,569.38	54,051.79	141,106.52	195,158.31	136,366.43
April	39,102.74	5,698.73	44,801.46	129,068.56	173,870.03	122,018.53
May	46,927.55	5,742.76	52,670.31	151,426.30	204,096.61	143,727.07
June	46,416.44	5,157.43	51,573.88	143,013.54	194,587.42	139,043.34
July	47,369.84	5,552.00	52,921.84	165,573.49	218,495.33	152,669.24
August	37,198.96	4,467.32	41,666.28	144,294.70	185,960.98	137,752.28
September	45,604.73	4,771.06	50,375.79	141,137.42	191,513.21	137,677.49
October	43,194.97	5,894.00	49,088.97	147,899.66	196,988.62	141,563.09
November	45,182.26	5,692.39	50,874.65	138,150.92	189,025.57	133,698.81

Source: Kenya Revenue Authority

Table 13(a): Major Destinations of Domestic Exports

Month/Country	Uganda	Tanzania	United Kingdom	Pakistan	Netherlands	Egypt	Germany	Rwanda	USA	United Arab Emirates	France
2016											
January	3,923.06	2,097.31	3,843.82	2,499.36	3,564.66	1,553.87	618.73	973.12	2,830.16	1,710.21	407.36
February	3,508.53	2,076.69	3,455.76	2,558.67	3,504.64	1,797.12	674.96	1,127.02	3,101.10	2,679.19	361.21
March	4,636.78	3,033.42	3,489.70	2,342.85	4,815.73	1,879.78	1,323.44	1,210.29	3,129.16	2,043.04	565.88
April	5,701.19	2,502.44	3,162.46	2,446.12	3,483.37	2,038.98	1,491.59	1,436.49	2,977.65	2,193.83	584.67
May	3,723.09	2,838.01	2,971.70	3,139.20	3,593.22	1,798.00	1,067.47	1,045.91	3,359.82	2,882.70	499.65
June	3,973.20	1,909.92	3,106.22	4,989.16	3,009.93	1,788.62	835.26	1,272.85	3,739.77	2,198.01	535.32
July	4,104.43	1,530.53	3,042.03	3,370.61	2,695.37	2,068.33	907.17	1,138.05	4,827.91	2,301.17	530.24
August	4,206.21	2,019.18	2,985.90	3,188.76	2,479.58	1,791.48	778.37	1,380.37	3,747.38	2,148.34	491.59
September	4,233.11	1,796.76	2,781.90	3,014.18	3,026.77	1,835.19	969.31	1,206.52	4,352.97	1,912.79	665.57
October	3,851.33	1,858.54	2,115.34	2,945.51	2,537.94	1,060.08	829.21	985.96	3,308.12	1,586.51	518.47
November	4,726.16	2,165.60	3,321.12	5,349.35	4,072.44	749.82	1,035.13	1,140.58	4,367.77	2,071.18	563.61
December	4,420.21	1,954.34	3,105.12	4,285.39	3,042.98	1,724.42	888.40	2,082.63	3,356.45	1,615.74	418.63
2017											
January	4,504.32	1,441.55	3,341.13	7,313.85	3,796.17	1,458.08	939.66	1,037.20	2,891.47	1,679.42	503.11
February	4,934.59	1,727.44	3,404.49	4,341.75	4,332.38	1,517.51	1,227.80	1,145.03	4,012.24	1,588.68	511.09
March	4,842.07	1,821.27	3,150.88	3,948.16	3,856.46	1,389.55	1,243.84	1,177.39	3,816.54	1,556.33	644.80
April	3,619.98	1,330.49	2,509.41	3,765.53	3,370.54	926.89	1,346.07	1,016.33	3,456.95	2,019.01	569.99
May	4,009.30	1,877.62	3,151.43	5,471.60	3,729.21	914.83	1,306.13	1,438.28	4,370.24	2,339.36	688.08
June	3,998.35	1,696.50	3,347.68	5,815.54	3,288.38	1,732.36	829.16	1,320.90	4,592.62	1,973.22	652.16
July	4,309.44	1,987.71	3,651.35	6,081.89	3,080.03	1,375.67	783.97	1,236.20	5,103.65	1,670.64	795.27
August	3,128.89	1,955.35	2,858.19	3,974.46	2,637.58	1,208.69	668.50	1,283.45	4,035.63	1,065.48	949.67
September	4,836.45	2,260.70	3,068.66	5,629.54	2,885.45	2,211.13	614.48	1,452.33	3,942.80	1,863.32	662.18
October	3,274.51	2,233.58	3,527.08	5,747.14	3,366.71	1,330.08	854.28	906.55	3,618.55	2,080.02	500.59
November	4,917.66	2,386.46	3,028.98	5,938.08	3,297.22	2,205.29	892.09	1,098.81	3,772.93	1,693.23	432.10

Source: Kenya Revenue Authority (KRA)

Table 13(b): Domestic Exports by Broad Economic Category

Value in KSh Million															
2017															
Descriptions	Sep	Oct	Nov	Dec	Jan	Feb	March	April	May	June	July	August	September	October	November
Food and beverages	16,664.58	15,573.24	19,737.24	18,064.68	21,773.39	18,950.31	20,321.81	19,027.28	23,224.27	23,478.82	23,867.01	17,142.80	22,478.00	21,548	21,294
Industrial supplies (Non-Food)	10,262.62	9,462.29	10,767.45	11,706.12	10,907.35	11,056.01	12,562.85	9,158.85	10,311.28	10,571.02	10,399.11	8,624.28	10,638.00	9,715	10,665
Fuel and Lubricants	454.83	426.05	372.27	413.51	384.72	476.85	486.46	350.91	595.31	479.51	349.59	367.14	500.00	425	476
Machinery & other capital Equipment	1,418.63	620.15	622.00	1,041.76	516.04	563.11	1,039.04	423.30	540.22	572.61	633.41	319.29	481.00	489	928
Transport equipment	333.98	401.75	715.58	510.24	377.73	615.48	351.57	225.75	428.64	538.03	388.38	77.53	421.00	327	403
Consumer goods Not elsewhere specified	10,837.24	9,057.20	12,580.06	10,769.38	9,741.80	12,183.41	12,720.67	9,915.51	11,827.83	10,776.36	11,729.52	10,662.50	11,085.00	10,691	11,416
Goods not elsewhere specified	3.27	0.03	0.30	4.73	2.83	1.42	0.00	1.14	-	0.08	2.81	5.42	2.00	0	0
Total	39,975.14	35,540.71	44,794.89	42,510.41	43,703.87	43,846.59	47,482.41	39,102.74	46,927.55	46,416.44	47,369.84	37,198.96	45,605.00	43,195.00	45,182.00
Percentage Shares:															
Food and Beverages	41.69	43.82	44.06	42.49	49.82	43.22	42.80	48.66	49.49	50.58	50.38	46.08	48.51	49.89	47.13
Industrial Supplies (Non-Food)	25.67	26.62	24.04	27.54	24.96	25.22	26.46	23.42	21.97	22.77	21.95	23.18	24.54	22.49	23.61
Fuel and Lubricants	1.14	1.20	0.83	0.97	0.88	1.09	1.02	0.90	1.27	1.03	0.74	0.99	1.08	0.98	1.05
Machinery and other Capital Equipment...	3.55	1.74	1.39	2.45	1.18	1.28	2.19	1.08	1.15	1.23	1.34	0.86	1.04	1.13	2.05
Transport Equipment	0.84	1.13	1.60	1.20	0.86	1.40	0.74	0.58	0.91	1.16	0.82	0.21	0.91	0.76	0.89
Consumer Goods not elsewhere specified	27.11	25.48	28.08	25.33	22.29	27.79	26.79	25.36	25.20	23.22	24.76	28.66	23.92	24.75	25.27
Goods not elsewhere specified	0.01	0.00	0.00	0.01	0.01	0.00	0.00	0.00	-	0.00	0.01	0.01	0.00	0.00	0.00
TOTAL	100	100	100	100	100	100	100	100	100	100	100	100	100	100	100

Source: Kenya Revenue Authority (KRA)

Table 14(a): Major Origins of Imports

Value (KSh Million)											
Month	United Arab Emirates	United Kingdom	South Africa	Saudi Arabia	Japan	India	USA	Germany	Netherlands	France	China
2016											
January	4,944.12	2,281.69	3,454.89	5,180.36	6,099.76	16,504.76	3,375.95	4,087.76	1,126.96	1,872.24	23,566.97
February	5,972.46	1,865.60	2,837.94	2,504.97	8,022.73	17,887.55	3,778.12	3,570.32	1,779.87	1,752.56	21,052.43
March	3,491.63	3,123.86	3,629.19	5,404.12	6,376.63	22,701.65	3,888.18	3,811.26	959.60	1,916.11	20,660.58
April	7,145.14	2,863.18	3,630.94	8,121.33	7,499.12	19,604.67	6,072.00	3,914.74	991.02	1,729.23	27,540.24
May	5,189.51	3,216.21	4,750.80	3,068.11	6,010.64	20,838.39	3,935.67	3,841.98	2,042.26	1,573.44	24,846.52
June	11,644.27	3,038.35	4,552.57	5,659.39	6,228.99	16,796.96	4,482.54	4,211.81	662.94	1,905.70	32,592.22
July	11,581.22	2,614.25	4,625.82	6,172.08	7,829.89	10,611.81	4,954.64	3,803.33	1,105.24	2,061.78	29,349.04
August	9,860.47	3,065.09	4,258.68	5,117.55	8,165.09	15,749.99	3,793.05	2,934.68	2,305.65	1,932.46	39,318.08
September	10,289.85	2,386.76	4,977.14	5,272.35	6,748.98	13,651.83	3,616.06	3,073.59	915.92	1,907.45	29,743.90
October	9,442.04	3,063.13	3,886.01	9,386.20	5,079.91	16,570.87	2,624.11	2,878.50	844.92	1,574.34	26,362.46
November	7,277.36	2,853.21	4,444.70	6,931.80	7,246.13	16,382.90	3,310.70	3,647.64	2,368.30	1,685.93	31,420.66
December	4,643.95	3,115.79	4,808.50	6,440.80	7,100.91	18,197.50	3,987.93	3,577.50	1,407.73	1,622.93	30,997.00
2017											
January	9,227.18	2,442.53	4,675.34	9,551.18	6,068.33	19,717.12	3,197.56	2,702.33	1,890.35	1,638.85	43,391.18
February	8,041.26	2,026.02	3,950.75	14,020.57	4,716.70	10,524.46	4,670.87	2,644.94	745.44	2,334.78	36,355.34
March	5,663.35	2,870.13	5,420.20	12,797.50	8,080.86	17,598.99	6,633.12	3,400.79	1,222.91	1,776.00	33,863.93
April	8,866.80	2,207.98	5,214.38	8,811.44	7,562.29	13,506.63	7,251.68	2,464.43	667.25	1,972.99	26,304.40
May	9,188.47	2,951.16	4,959.69	8,408.87	7,165.70	19,756.27	4,572.31	3,241.05	2,308.94	3,510.52	35,384.60
June	11,278.60	2,382.50	6,951.62	6,042.21	7,102.05	14,888.74	4,253.16	5,063.48	941.26	3,226.27	37,754.50
July	17,882.91	2,262.08	5,742.97	7,444.48	8,432.09	10,273.85	6,235.67	5,789.28	3,246.37	1,987.82	38,140.26
August	14,527.61	2,371.68	5,781.16	10,108.86	5,499.98	10,783.65	3,503.61	2,491.28	1,696.62	2,779.04	21,831.81
September	16,308.05	2,687.04	5,519.82	2,535.86	5,662.15	13,202.32	3,711.92	5,335.21	2,379.60	2,301.80	28,575.86
October	8,440.48	2,135.07	4,877.69	15,240.60	7,519.17	13,069.27	3,402.22	3,835.67	1,073.77	1,671.50	39,894.81
November	13,446.31	2,624.49	4,601.56	10,492.68	5,958.94	14,983.42	4,941.18	2,800.16	1,742.51	1,715.66	24,720.93

Source: Kenya Revenue Authority

Table14(b):Imports by Broad Economic Category

Descriptions	Value in KSh Million												
	2016		2017										
	Nov	Dec	January	Feb	March	April	May	June	July	August	Sep	Oct	Nov
Food and beverages	9,597.42	11,742.46	13,197.55	12,042.30	13,459.72	14,352.39	19,135.41	24,222.84	27,807.46	40,171.92	20,224.00	20,296	18,726
Industrial supplies (Non-Food)	45,515.42	40,528.23	48,039.30	46,881.27	46,715.60	48,322.75	48,477.97	42,817.97	46,328.90	39,306.75	47,826.00	45,484	45,033
Fuel and Lubricants	20,685.33	18,629.86	22,436.63	19,789.83	22,601.27	20,916.04	24,228.88	21,301.88	24,200.64	21,397.68	22,321.00	24,260	28,043
Machinery & other capital Equipment	27,127.25	29,201.69	31,305.83	29,161.60	25,946.28	22,461.29	27,283.45	31,687.89	30,437.64	21,789.72	25,821.00	22,307	19,374
Transport equipment	12,439.04	12,281.64	20,949.11	12,092.82	21,996.80	13,732.94	20,213.77	12,756.01	20,749.65	10,692.39	12,514.00	23,203	14,861
Consumer goods Not elsewhere specified	12,580.17	10,516.77	14,490.30	9,664.57	10,092.82	9,259.95	11,805.28	9,800.05	15,327.02	10,911.78	12,242.00	10,702	12,067
Goods not elsewhere specified	1,386.70	106.44	317.64	1,207.55	294.03	23.22	281.54	426.90	722.19	24.45	190.00	1,646	46
Total	129,331.33	123,007.09	150,736.36	130,839.93	141,106.52	129,068.56	151,426.30	143,013.54	165,573.49	144,294.70	141,138.00	147,900.00	138,151.00
Percentage Shares:													
Food and Beverages	7.42	9.55	8.76	9.20	9.54	11.12	12.64	16.94	16.79	27.84	14.33	13.72	13.56
Industrial Supplies (Non-Food)	35.19	32.95	31.87	35.83	33.11	37.44	32.01	29.94	27.98	27.24	33.90	30.75	32.60
Fuel and Lubricants	15.99	15.15	14.88	15.13	16.02	16.21	16.00	14.90	14.62	14.83	15.81	16.40	20.30
Machinery and other Capital Equipment...	20.98	23.74	20.77	22.29	18.39	17.40	18.02	22.16	18.38	15.10	18.29	15.08	14.02
Transport Equipment	9.62	9.98	13.90	9.24	15.59	10.64	13.35	8.92	12.53	7.41	8.86	15.69	10.76
Consumer Goods not elsewhere specified	9.73	8.55	9.61	7.39	7.15	7.17	7.80	6.85	9.26	7.56	8.68	7.24	8.73
Goods not elsewhere specified	1.07	0.09	0.21	0.92	0.21	0.02	0.19	0.30	0.44	0.02	0.13	1.11	0.03
TOTAL	100	100	100	100	100	100	100	100	100	100	100	100	100

Source: Kenya Revenue Authority

Table 14 (C): Mobile Money Transactions

As at the end of month	Mobile money Agents	Mobile money subscriptions (millions)	Number of Transactions (millions)*	Value (KSh billions)
2016				
January	146,710.00	29.10	108.13	243.37
February	148,982.00	29.49	114.14	257.19
March	150,987.00	30.70	121.72	273.59
April	153,762.00	31.44	120.23	269.82
May	156,349.00	31.30	122.55	277.94
June	162,465.00	31.39	121.81	270.97
July	167,072.00	32.34	127.04	281.85
August	173,774.00	32.76	131.46	296.91
September	173,731.00	33.44	130.70	283.85
October	181,456.00	34.04	141.41	292.09
November	162,441.00	34.28	140.78	291.23
December	165,908.00	34.96	146.20	316.77
2017				
January	152,547.00	33.34	122.03	299.49
February	154,908.00	33.29	117.50	279.39
March	157,855.00	33.92	133.34	320.18
April	160,076.00	34.29	128.89	297.44
May	164,674.00	34.21	132.46	315.45
June	165,109.00	34.18	125.90	299.79
July	169,480.00	34.58	128.11	308.89
August	167,353.00	35.33	120.65	286.34
September	167,775.00	35.54	128.46	300.92
October	170,389.00	36.00	134.20	299.02
November	176,986.00	36.39	131.74	298.96

Source: Central Bank of Kenya

Table 14(d): International trade in ICT 2017

Descriptions	KSh Million								
	March	April	May	June	July	Aug	Sep	Oct	Nov
Imports									
Office machines ¹	84.80	106.30	282.30	113.90	260.10	128.90	140.40	296.60	373.40
Automatic data processing machines, storage units etc	3,183.10	1,143.43	4,144.94	3,553.00	1,158.20	903.00	589.40	598.40	739.65
Part and accessories ²	158.70	50.02	58.40	89.60	29.34	1,047.00	39.30	62.90	86.70
Monitors and projectors and reception apparatus for television ³	251.40	614.41	385.20	528.42	403.35	508.03	581.30	499.10	744.10
Reception apparatus for radio broadcasting ⁴	8.73	3.90	10.20	9.13	67.70	7.70	18.90	9.40	14.73
Recording equipments ⁵	25.44	27.33	316.30	20.30	12.60	27.84	20.10	20.80	25.70
Telecommunications equipment ⁶	2,989.00	2,064.10	2,138.00	5,931.83	2,378.02	2,168.63	2,220.90	1,017.05	1,298.70
Exports									
Office machines ¹	19.00	3.00	0.32	1.50	5.30	1.30	0.80	45.00	0.42
Automatic data processing machines, storage units etc	16.30	8.00	21.90	16.00	38.40	27.24	28.40	24.00	15.60
Part and accessories ²	2.60	1.00	5.10	2.70	2.90	4.61	3.20	2.50	1.16
Monitors and projectors and reception apparatus for television ³	0.80	1.10	12.20	50.40	21.70	7.40	21.30	1.90	21.70
Reception apparatus for radio broadcasting ⁴	0.04	0.01	0.04	1.30	1.70	0.28	3.40	0.15	0.01
Recording equipments ⁵	0.04	0.84	0.31	0.06	0.28	0.12	0.80	0.13	0.01
Telecommunications equipment ⁶	61.82	22.70	19.20	11.80	138.40	128.70	64.00	18.90	28.52

Source: Kenya Revenue Authority (KRA)

¹ Electronic calculating machines, cash registers, accounting machines, postage-franking machines, ticket issuing machines, reproducing and displaying machines with calculating functions, duplicating machines and their parts/accessories etc

² For office machines and data processing machines

³ Include Television sets, decoders etc

⁴ Whether or not combined with sound recording or reproducing apparatus or a clock

⁵ Sound recording, video recording or reproducing apparatus including or not including a video tuner

⁶ Such as computer, laptops, networking equipments etc plus their parts and accessories such as telephone sets, microphones, electric sound amplifier sets Television cameras, digital or video cameras recorders, radio or tv transmission apparatus etc

Table 15(a): Local Electricity Generation by Source

KWh Million					
Month	Hydro	Geo - Thermal	Thermal*	Wind	Total
2016					
January	322.49	392.00	93.03	5.01	812.53
February	296.75	391.65	95.42	6.73	790.55
March	334.51	383.11	112.23	6.71	836.56
April	303.46	394.48	101.92	4.22	804.08
May	334.37	403.45	92.20	2.42	832.44
June	348.09	341.92	113.36	2.06	805.43
July	336.92	392.99	109.74	1.84	841.49
August	363.61	345.00	137.77	3.71	850.09
September	348.63	335.37	136.75	3.75	824.50
October	356.88	363.93	135.24	5.77	861.82
November	314.92	369.05	158.05	6.18	848.20
December	299.08	371.242447	157.85	8.020847	836.193294
2017					
January	252.44	380.15	197.08	6.98	836.65
February	213.90	354.16	182.36	7.46	757.89
March	234.26	387.87	229.66	6.32	858.10
April	211.55	381.13	223.00	6.59	822.26
May	228.56	393.84	223.57	3.48	849.45
June	180.22	376.20	274.26	3.09	833.77
July	192.56	401.65	271.32	1.47	867.00
August	251.30	415.03	159.46	3.34	829.13
September	239.47	402.65	213.34	3.57	859.03
October	216.98	416.05	223.84	4.28	861.15
November	305.16	411.39	153.13	7.13	876.81

Source: Kenya Power & Lighting Company Limited

*Thermal excludes EPP

Fig. 7: Electricity Generation by Source

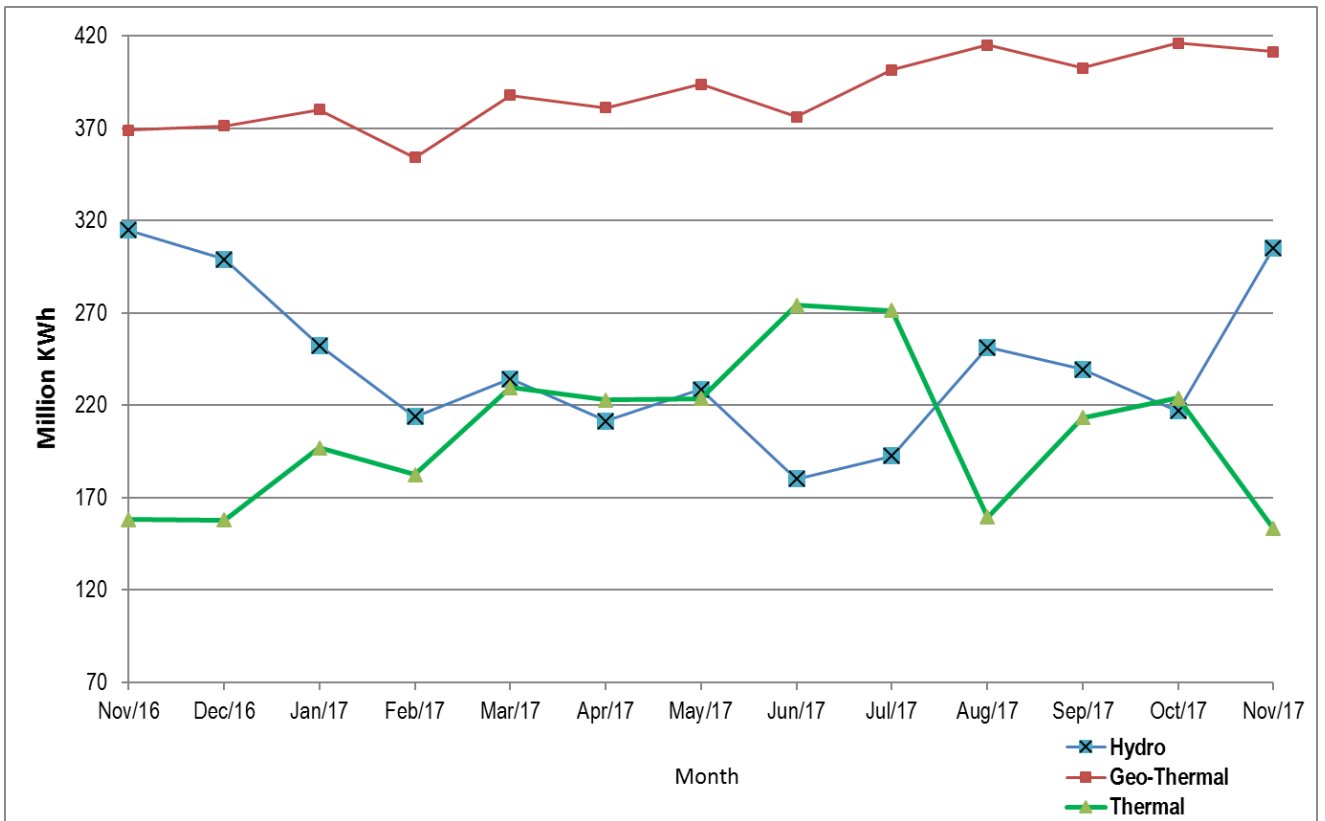


Table 15(b): Generation and Consumption of Electricity

Million KWh											
Month	Generation						Consumption				
	Local Generation	Imports				EPPS (Aggregates)	Total Generation	Exports			
		Uganda	Tanzania	Ethiopia	Total			Total KPLC Sales	Uganda	Tanzania	Total Exports
2016											
January	812.53	6.40	-	0.22	6.62	4.10	819.15	622.53	3.38	0.17	3.55
February	790.55	5.26	-	0.26	5.52	3.17	796.07	590.96	3.56	0.19	3.56
March	836.56	5.94	-	0.26	6.20	5.79	842.76	626.38	3.50	0.20	3.50
April	804.08	5.22	-	0.17	5.39	5.09	809.47	621.35	3.22	0.20	3.42
May	832.44	5.68	-	0.19	5.87	3.53	838.31	650.89	3.44	0.18	3.62
June	805.43	6.07	-	0.28	6.35	3.77	811.78	663.34	3.33	0.19	3.52
July	841.49	6.22	-	0.30	6.52	0.80	848.02	657.59	3.33	0.16	3.49
August	850.09	6.96	-	0.28	7.23	-	857.32	684.81	2.96	0.13	3.09
September	824.50	7.00	-	0.27	7.27	-	831.76	634.64	3.01	0.15	3.16
October	861.82	6.83	-	0.28	7.11	-	868.93	688.18	4.11	0.20	4.31
November	848.20	9.45	-	0.27	9.72	-	857.92	689.48	1.41	0.19	1.60
December	836.19	12.18	-	0.26	12.44	-	848.63	678.08	1.72	0.19	1.91
2017*											
January	836.65	20.87	-	0.31	21.18	-	857.83	703.42	0.72	0.19	0.91
February	757.89	31.57	-	0.30	31.87	-	789.76	655.86	0.00	0.19	0.19
March	858.10	22.65	-	0.26	22.91	-	881.01	704.99	0.72	0.21	0.93
April	822.26	17.24	-	0.30	17.54	-	839.80	689.46	0.26	0.22	0.48
May	849.45	17.63	-	0.28	17.91	-	867.36	735.98	0.90	0.23	1.13
June	833.77	21.64	-	0.30	21.64	-	855.41	740.32	0.43	0.23	0.65
July	867.00	23.04	-	0.35	23.39	-	890.39	720.86	0.18	0.24	0.42
August	829.13	13.36	-	0.37	13.73	-	842.86	682.76	1.46	0.24	1.71
September	859.03	14.19	-	0.23	14.42	-	873.45	710.08	1.07	0.24	1.31
October	861.15	14.62	-	0.33	14.95	-	876.10	675.96	1.72	0.24	1.96
November	876.81	14.26	-	0.33	14.59	-	891.40	712.85	1.00	0.23	1.23

Source: Kenya Power & Lighting Company Limited

*Provisional

Table 15(c): Consumption of Petroleum Fuels

									'000 MT
	AGO (Light Diesel Oil)	Jet	Fuel Oil	Motor Spirit	Illuminating Kerosene	IDO (Heavy Diesel Oil)	LPG	Aviation Gasoline	
2017*									
Jan	166.08	46.67	44.11	101.05	39.34	0.09	6.14	0.13	
Feb	170.86	45.00	44.47	93.68	35.74	0.33	5.56	0.12	
March	193.44	48.69	47.36	105.78	39.60	0.00	5.69	0.14	
April	165.21	43.79	41.74	99.00	37.15	1.22	5.04	0.09	
May	171.04	45.04	33.89	99.74	36.57	0.76	7.73	0.10	
June	178.53	43.35	44.83	100.27	36.71	0.00	4.92	0.11	
July	135.04	44.94	22.11	71.57	32.38	0.00	3.79	0.11	

Source: Ministry of Energy and Petroleum

MT: Denotes Metric Tonnes

*Provisional

Table 15(d): Average Retail Prices for Selected Fuel Products within Nairobi

KSh per litre			
Period	Motor Gasoline Premium	Light Diesel Oil (Gasoil)	Illuminating Kerosene
2016			
January	88.64	76.70	46.13
February	86.50	67.88	39.62
March	85.58	65.70	42.15
April	80.71	66.23	43.96
May	84.25	70.37	46.98
June	86.17	73.71	55.20
July	92.93	83.24	61.45
August	95.13	84.51	62.48
September	91.39	82.46	59.10
October	91.56	82.12	58.71
November	94.94	82.17	62.16
December	94.20	87.22	63.56
2017			
January	96.01	84.23	63.44
February	100.27	89.26	67.19
March	101.05	90.44	67.96
April	98.00	88.62	64.38
May	99.59	88.05	65.28
June	98.73	86.89	65.05
July	97.10	84.46	62.56
August	96.08	85.86	63.42
September	98.30	86.86	64.36
October	101.67	88.71	66.18
November	102.7	92.41	71.23

Source: Energy Regulatory Commission

Table 15(e): Average Retail Prices for Selected Fuels in Kenya

Period	Motor Gasoline Premium (KSh per Litre)	Light Diesel Oil (KSh per Litre)	Illuminating Kerosene (KSh per Litre)	L.P.G (KSh per 13 Kg)	Charcoal (KSh per 4 Kg Tin)
2016					
January	89.52	77.66	47.11	2,343.86	78.82
February	87.38	68.85	40.60	2,318.03	78.64
March	86.46	66.68	43.13	2,277.48	78.07
April	81.61	67.21	44.94	2,268.37	78.82
May	85.14	71.34	47.96	2,252.86	78.82
June	87.07	74.69	59.10	2,231.38	78.71
July	93.81	84.20	62.42	2,097.51	78.71
August	96.01	85.47	63.45	2,078.76	79.00
September	92.28	83.42	60.08	2,029.12	79.39
October	92.44	83.08	59.68	1,989.54	79.17
November	95.82	83.14	63.13	1,987.69	79.07
December	95.08	88.18	64.52	1,983.06	79.20
2017					
January	96.88	85.20	64.41	1,989.50	79.64
February	101.14	90.22	68.15	1,976.38	79.78
March	101.91	91.39	68.93	1,998.70	79.81
April	99.01	89.70	65.44	2,063.95	80.80
May	100.48	89.02	66.26	2,104.29	81.37
June	99.68	87.95	66.04	2,112.19	81.70
July	98.00	85.45	63.55	2,073.62	81.61
August	96.98	86.84	64.41	2,080.10	81.61
September	98.62	87.40	65.33	2,094.22	81.86
October	101.09	88.43	67.12	2,140.47	81.82
November	103.58	93.37	72.20	2,128.59	82.51

Fig. 9: Average Prices for Liquefied Petroleum Gas in Kenya ('000 KSh per 13 Kg cylinder)

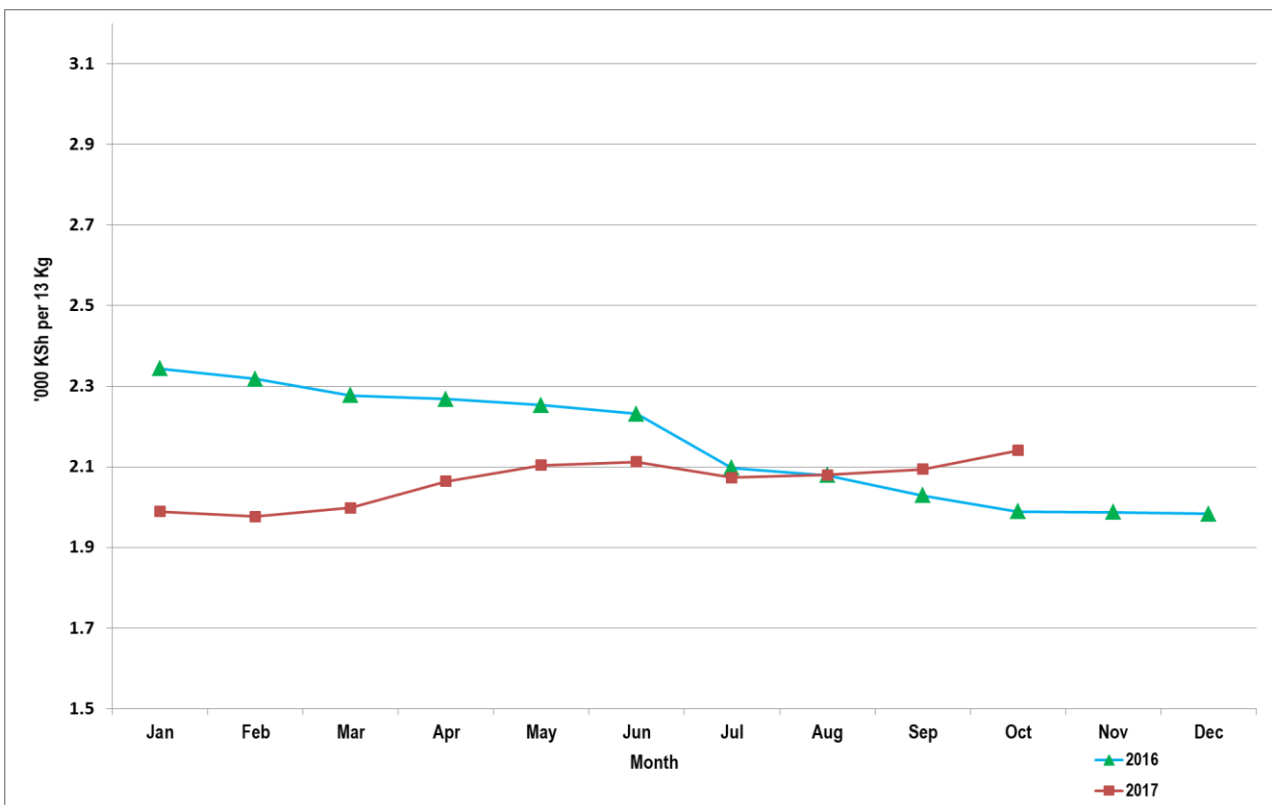


Table 15(f): Murban ADNOC Crude Oil Prices

Month/Year	US\$/ BBL						
	2011	2012	2013	2014	2015	2016	2017
January	95.55	114.20	112.05	109.75	46.40	29.95	55.35
February	103.60	120.45	115.40	109.95	56.55	33.00	56.10
March	112.55	127.00	109.95	108.30	56.10	38.20	52.60
April	120.70	121.20	105.65	107.95	60.55	42.00	53.40
May	113.60	110.60	103.65	109.15	65.75	47.35	51.45
June	112.15	97.35	103.00	111.65	63.70	49.05	47.30
July	113.95	101.75	106.85	109.50	57.70	44.60	48.60
August	109.05	111.65	111.70	104.25	48.85	48.85	48.85
September	110.90	115.40	114.50	97.95	46.60	45.50	55.70
October	108.95	113.20	112.45	87.35	47.30	51.35	63.83
November	114.35	112.10	112.20	77.00	43.55	46.15	63.65
December	111.80	110.75	113.85	60.65	37.25	54.15	

US\$/BBL: US Dollar per Barrel

Price: Abu Dhabi Free On Board (FOB)

ADNOC: Abu Dhabi National Oil Corporation

Fig. 10: Trends for Different world Crude Oil Prices

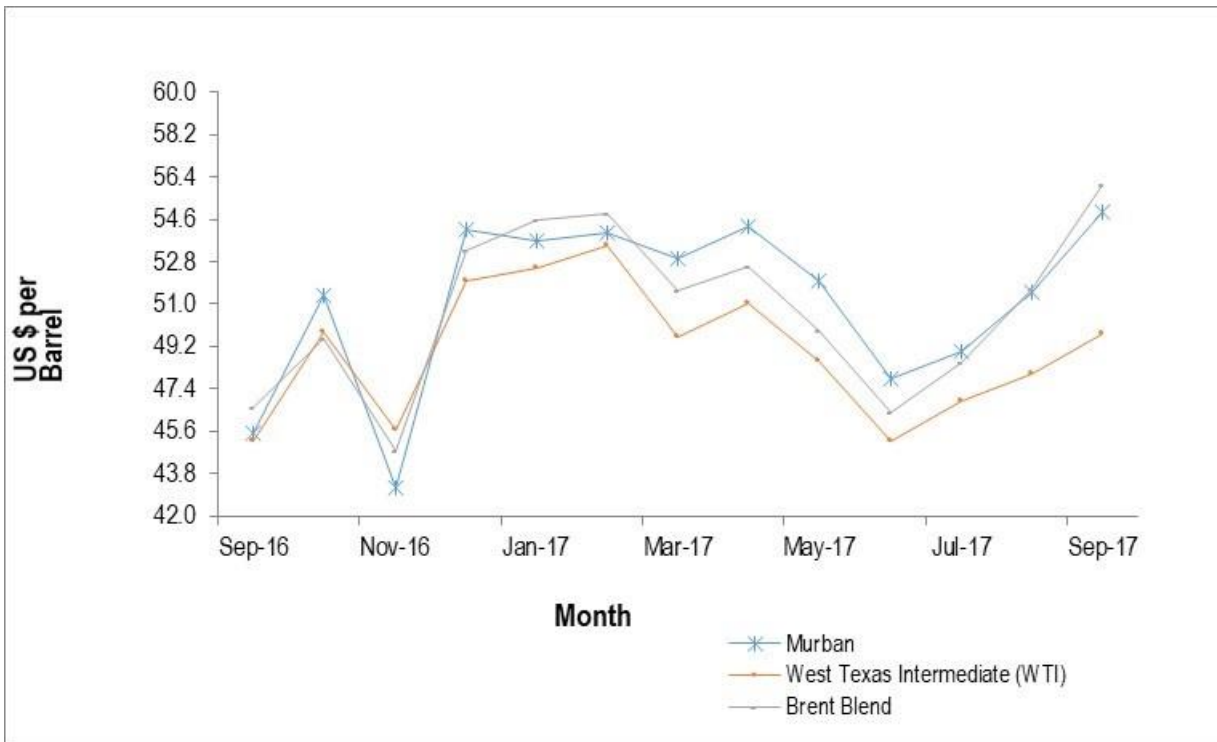


Table 16: Value of Building Plans Approved by Nairobi City County Planning Compliance & Enforcement Department

Month	Residential	Non Residential	Aggregate	Residential	Non Residential	Aggregate
January	10,822.40	9,503.42	20,325.82	128.37	108.53	236.83
February	11,275.50	8,475.84	19,751.34	133.74	96.80	230.14
March	11,765.56	9,867.06	21,632.62	139.56	112.69	252.06
April	11,800.44	10,039.54	21,839.98	139.97	114.66	254.48
May	12,401.97	9,739.09	22,141.05	147.11	111.23	257.99
June	12,300.63	10,679.08	22,979.71	145.90	121.96	267.76
July	18,146.46	2,691.63	20,838.09	215.24	30.74	242.80
August	-	-	-	-	-	-
September	-	-	-	-	-	-
October	-	-	-	-	-	-
November	10,589.01	5814.25	16,403.27	125.60	66.40	191.13

Source: Nairobi City County.

* Actual deflated by relevant construction cost indices (Dec1972 =100)

- No Building plans were approved

Table 17(a): Domestic Production of Sugar

Month/Year	Metric Tonnes								
	2009	2010	2011	2012	2013	2014	2015	2016	2017*
January	53,968	48,100	55,974	53,852	49,046	64,298	63,227	41,348	53,071
February	46,115	42,982	52,069	49,480	50,036	60,044	57,917	41,440	49,094
March	53,687	45,388	53,842	52,342	43,647	63,365	63,389	48,865	41,936
April	46,164	43,801	52,061	44,914	39,151	47,279	46,280	42,148	26,230
May	46,002	34,465	49,130	40,410	36,529	44,094	44,081	36,874	15,246
June	47,410	37,828	38,818	45,111	49,512	42,866	46,098	36,202	16,113
July	33,078	33,495	25,884	41,607	61,802	55,912	47,957	32,158	17,882
August	36,827	41,911	26,060	37,058	58,687	50,140	54,089	38,508	10,892
September	42,586	45,595	22,815	32,503	50,303	47,915	61,069	40,291	21,649
October	43,750	43,669	28,990	30,123	52,751	42,197	56,360	43,203	
November	50,115	50,822	32,689	31,886	54,752	34,455	43,401	40,141	
December	48,297	55,414	36,729	34,651	53,994	64,298	48,089	49,966	
Total	547,999	523,470	475,061	493,937	600,210	592,668	631,957	491,143	

Source: Sugar Directorate

*Provisional

Table 17(b): Production of Soft Drinks

Month	'000 Litres								
	2009	2010	2011	2012	2013	2014	2015	2016	2017*
January	31,153	29,405	34,446	34,317	32,809	39,007	41,348	50,502	50,491
February	26,891	31,178	32,457	32,009	36,068	39,146	41,440	45,237	43,941
March	34,847	33,984	36,156	37,363	42,552	40,320	48,865	58,038	46,585
April	32,585	29,352	31,162	29,331	27,345	37,885	42,148	44,429	41,814
May	26,934	29,445	26,622	24,359	27,581	40,430	36,874	43,189	36,483
June	28,314	29,588	28,910	27,391	30,919	28,706	36,274	39,191	41,265
July	25,279	29,332	28,478	22,073	28,464	33,790	32,086	42,393	39,575
August	26,829	28,525	28,580	24,458	27,697	33,404	38,432	39,331	38,228
September	31,594	29,593	29,674	31,113	36,026	35,899	40,176	48,884	35,677
October	29,922	30,435	28,540	32,540	34,810	41,601	42,936	46,131	39,905
November	29,664	29,333	27,366	31,497	36,272	40,134	40,025	41,877	
December	37,261	31,163	38,962	33,067	43,438	49,142	49,966	52,185	
Total	361,273	361,333	371,352	359,518	403,981	459,464	490,568	551,388	

*Provisional

Table 17(c): Production of Assembled Vehicles

								Numbers
Month/Year	2010	2011	2012	2013	2014	2015	2016	2017*
January	299	290	387	435	511	601	363	375
February	521	413	588	536	792	949	587	609
March	510	462	303	496	737	922	650	585
April	438	449	594	584	798	813	658	463
May	521	554	654	560	832	827	642	446
June	550	550	588	609	856	745	482	431
July	509	524	570	617	809	757	491	433
August	460	553	588	578	828	931	605	348
September	461	651	597	590	886	1,029	623	321
October	460	660	585	652	887	1,139	357	392
November	490	594	420	733	724	972	461	
December	502	349	344	558	586	496	376	
Total	5,721	6,049	6,218	6,948	9,246	10,181	6,295	

Table 17(d): Production of Galvanized Sheets

							Metric Tonnes
Month/Year	2011	2012	2013	2014	2015	2016	2017*
January	22,094	22,940	25,528	22,090	21,304	21,330	23,271
February	22,386	19,655	22,874	18,573	20,078	20,102	21,696
March	22,928	21,507	26,296	21,267	22,797	20,120	22,165
April	20,957	20,892	26,010	25,989	20,674	23,109	21,999
May	24,744	22,197	23,866	27,433	23,132	21,980	22,162
June	24,677	17,180	26,147	24,465	20,358	20,180	21,645
July	24,906	21,411	25,007	21,779	18,415	18,320	22,029
August	24,659	23,040	27,398	25,753	20,871	24,190	21,673
September	17,988	23,268	25,051	26,126	20,581	21,045	22,143
October	16,619	20,473	27,588	26,732	26,024	18,328	
November	22,104	21,969	26,628	25,763	25,764	19,143	
December	24,033	21,283	23,706	18,539	16,938	19,431	
Total	268,096	255,815	306,099	284,509	256,938	247,278	

*Provisional

Table 17(e): Cement Production and Consumption

Metric Tonnes								
Month/Year	2014		2015		2016		2017*	
	Production	Consumption	Production	Consumption	Production	Consumption	Production	Consumption
January	454,960	387,809	511,298	459,227	533,490	472,218	565,440	535,018
February	442,636	354,576	465,471	417,591	531,813	506,914	491,307	460,044
March	478,416	420,345	550,556	483,218	541,438	493,410	570,522	537,948
April	468,022	433,787	537,452	480,801	568,253	538,118	535,061	497,821
May	464,695	458,219	516,513	472,675	585,929	551,501	482,762	441,110
June	464,929	421,855	516,185	465,828	547,238	505,067	513,313	496,172
July	503,428	422,394	570,904	451,461	575,193	556,244	553,631	527,774
August	492,801	440,336	553,929	478,011	591,612	559,766	451,651	427,594
September	499,479	441,527	561,235	518,435	528,494	504,639	498,167	473,794
October	553,186	483,033	557,589	530,913	573,034	552,243	498,374	477,047
November	545,041	487,396	510,747	480,641	584,780	547,359	494,518	459,868
December	492,944	445,404	486,306	455,345	545,956	514,498		
TOTAL	5,860,537	5,196,681	6,338,184	5,694,146	6,707,230	6,301,977		

*Provisional

Table 17(f): Milk Intakes in the Formal Sector

							Million Litres	
Month/Year	2011	2012	2013	2014	2015	2016	2017*	
January	47.10	45.50	49.30	54.00	57.17	56.80	52.70	
February	40.80	32.90	42.50	46.60	37.80	52.83	41.89	
March	38.80	28.90	40.30	49.30	35.77	48.41	41.89	
April	41.80	26.00	44.40	45.00	35.59	54.35	41.66	
May	45.60	37.30	50.60	43.60	52.97	49.49	37.82	
June	45.70	46.20	44.50	44.50	51.02	66.37	42.76	
July	49.50	43.50	43.50	40.50	50.94	58.47	42.24	
August	46.40	45.50	37.90	41.80	51.59	56.15	46.03	
September	49.10	45.20	38.80	41.70	55.69	43.67	45.73	
October	50.30	47.80	38.90	43.50	55.42	56.90	47.49	
November	46.40	48.60	45.30	44.30	68.28	54.10	47.70	
December	47.70	47.90	47.00	46.60	58.87	50.70		
Total	549.00	495.20	523.00	541.10	611.10	648.24	487.91	

Source: Kenya Dairy Board

* Provisional

Fig. 11: Milk Intake in the Formal Sector

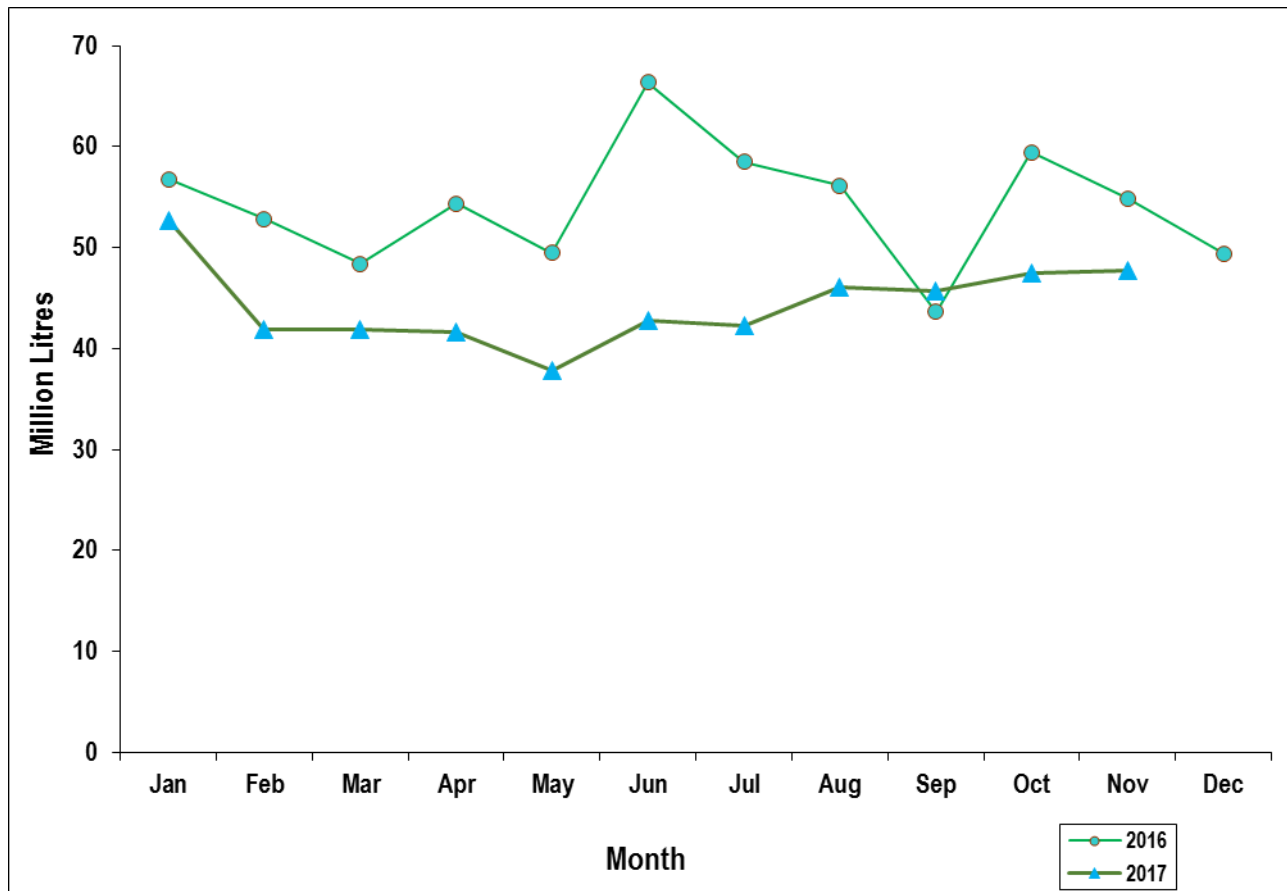


Table 18: Visitor Arrivals through J.K.I.A and M.I.A

Month	AIRPORT		Numbers*
	JKIA	MIA	Total
2016			
January	65,431	9,407	74,838
February	62,856	9,983	72,839
March	49,996	8,551	58,547
April	51,311	3,869	55,180
May	59,294	3,578	62,872
June	64,451	4,182	68,633
July	81,729	7,832	89,561
August	87,141	9,817	96,958
September	67,249	8,381	75,630
October	63,229	9,015	72,244
November	61,224	7,990	69,214
December	67,602	10,267	77,869
2017			
January	67,053	12,637	79,690
February	62,119	10,611	72,730
March	63,568	8,382	71,950
April	62,982	4,102	67,084
May	64,866	2,665	67,531
June	74,194	4,734	78,928
July	97,955	7,286	105,241
August	79,053	10,729	89,782
September	78,329	9,111	87,440
October	57,034	7,557	64,591
November	61,617	10,956	72,573

Source: Kenya Tourism Board

Fig. 12: Visitor Arrivals through J.K.I.A and M.I.A

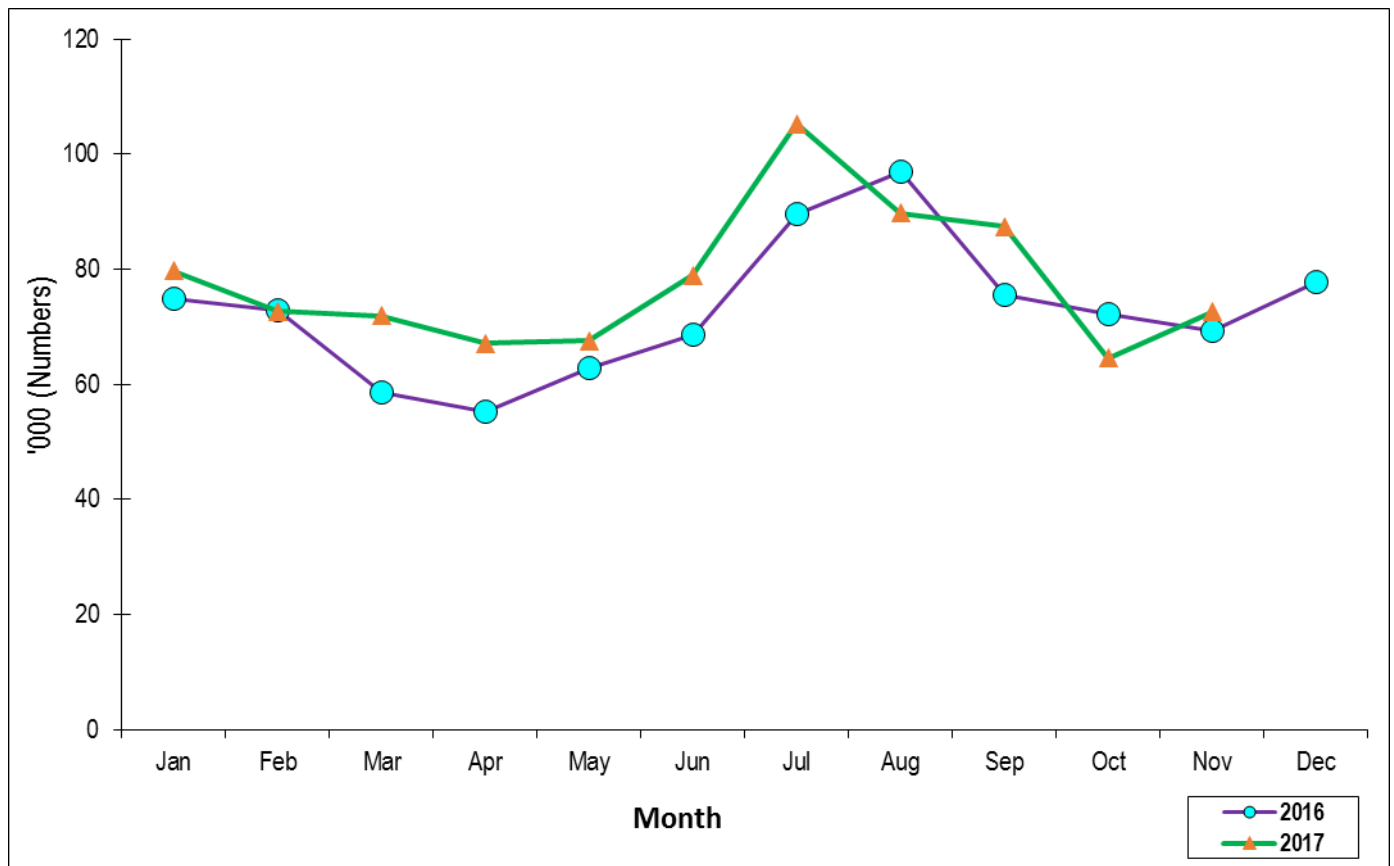


Table 19(a): Jomo Kenyatta international airport-Embarked Passengers by Port of Destination

PORTS/MONTH	2017										
	Jan	Feb	Mar	April	May	June	July	Aug	Sep	Oct	Nov
ADDIS ABABA (ADD)	2,012	2,014	2,013	2,012	2,015	2,011	2,016	2,013	2,015	2,014	2,020
CAIRO (CAI)	2,627	2,630	2,626	2,628	2,629	2,625	2,631	2,620	2,629	2,622	2,630
DAR ES SALAAM (DAR)	8,169	8,174	8,168	8,172	8,169	8,173	8,170	8,174	8,171	8,169	8,175
ENTEBBE (EBB)	10,920	10,926	10,921	10,925	10,922	10,927	10,919	10,929	10,920	10,928	10,919
HARARE (HRE)	2,693	2,695	2,692	2,696	2,694	2,697	2,691	2,699	2,688	2,696	2,686
JOHANNESBURG (JNB)	11,950	11,860	11,947	11,868	11,952	11,873	11,948	11,874	11,944	11,875	11,947
TOTAL AFRICA	38,371	38,299	38,367	38,301	38,381	38,306	38,375	38,309	38,367	38,304	38,377
BOMBAY (BOM)	10,067	10,076	10,069	10,077	10,066	10,078	10,068	10,077	10,067	10,079	10,068
DUBAI (DXB)	19,269	19,274	19,270	19,277	19,273	19,276	19,271	19,275	19,270	19,278	19,271
JEDAH (JED)	1,834	1,828	1,836	1,830	1,834	1,838	1,833	1,835	1,840	1,831	1,839
MUSCAT (MCT)	-	-	-	-	-	-	-	-	-	-	-
TOTAL ASIA	31,170	31,178	31,175	31,184	31,173	31,192	31,172	31,187	31,177	31,188	31,178
AMSTERDAM (AMS)	16,245	16,178	16,244	16,303	16,231	16,300	16,237	16,303	16,244	16,307	16,247
BRUSSELS (BRU)	1,525	1,527	1,522	1,525	1,524	1,526	1,523	1,529	1,522	1,527	1,521
LONDON (LON)	15,545	15,552	15,544	15,554	15,541	15,553	15,545	15,551	15,540	15,549	15,552
PARIS-(CDG)&(PAR)	2,772	2,773	2,766	2,771	2,764	2,769	2,765	2,770	2,763	2,771	2,764
ROME (ROM)	-	-	-	-	-	-	-	-	-	-	-
ZURICH (ZRH)	3,114	3,122	3,116	3,120	3,118	3,123	3,119	3,121	3,117	3,124	3,118
TOTAL (EUROPE)	39,201	39,152	39,192	39,273	39,178	39,271	39,189	39,274	39,186	39,278	39,202
OTHERS (TOTAL)**	71,707	71,760	71,690	71,630	71,699	71,625	71,716	71,630	71,777	71,731	71,742
GRAND TOTAL	180,449	180,389	180,424	180,388	180,431	180,394	180,452	180,400	180,507	180,501	180,499

** Port of Destination not listed

Table 19(b): Jomo Kenyatta international airport- Landed Passengers by Port of Origin

PORTS/MONTH	2017										
	Jan	Feb	March	April	May	June	July	Aug	Sep	Oct	Nov
ADDIS ABABA (ADD)	2,017	2,009	2,019	2,016	2,010	2,015	2,011	2,017	2,013	2,020	2,012
CAIRO (CAI)	2,758	2,752	2,757	2,755	2,759	2,753	2,760	2,751	2,758	2,753	2,761
DAR ES SALAAM (DAR)	8,165	8,174	8,175	8,171	8,176	8,170	8,177	8,169	8,175	8,168	8,178
ENTEBBE (EBB)	11,494	11,486	11,492	11,489	11,487	11,490	11,484	11,489	11,482	11,488	11,481
HARARE (HRE)	2,634	2,628	2,636	2,632	2,635	2,629	2,634	2,630	2,632	2,629	2,636
JOHANNESBURG (JNB)	10,883	10,876	10,884	10,879	10,889	10,880	10,887	10,879	10,885	10,889	10,881
TOTAL AFRICA	37,951	37,925	37,963	37,942	37,956	37,937	37,953	37,935	37,945	37,947	37,949
BOMBAY (BOM)	9,252	9,244	9,255	9,246	9,260	9,250	9,262	9,251	9,261	9,250	9,258
DUBAI (DXB)	21,989	21,978	21,988	21,290	21,274	21,292	21,277	21,273	21,276	21,290	21,278
JEDAH (JED)	2,036	2,030	2,035	2,031	2,036	2,029	2,037	2,027	2,036	2,028	2,038
MUSCAT (MCT)	-	-	-	-	-	-	-	-	-	-	-
TOTAL ASIA	33,277	33,252	33,278	32,567	32,570	32,571	32,576	32,551	32,573	32,568	32,574
AMSTERDAM (AMS)	14,874	14,857	14,877	14,862	14,878	14,860	14,875	14,859	14,879	14,862	14,877
BRUSSELS (BRU)	1,755	1,753	1,756	1,754	1,751	1,758	1,752	1,760	1,753	1,759	1,751
LONDON (LON)	16,047	16,039	16,044	16,040	16,045	16,041	16,046	16,040	16,048	16,042	16,049
PARIS-(CDG)&(PAR)	3,021	3,029	3,023	3,027	3,022	3,030	3,024	3,029	3,025	3,031	3,023
ROME (ROM)	-	-	-	-	-	-	-	-	-	-	-
ZURICH (ZRH)	3,125	3,118	3,127	3,122	3,128	3,120	3,126	3,119	3,128	3,121	3,127
TOTAL (EUROPE)	38,822	38,796	38,827	38,805	38,824	38,809	38,823	38,807	38,833	38,815	38,827
OTHERS (TOTAL) **	69,493	69,523	69,501	70,197	70,221	70,200	70,196	70,218	70,258	70,147	70,199
GRAND TOTAL	179,543	179,496	179,569	179,511	179,571	179,517	179,548	179,511	179,609	179,477	179,549

** Port of Origin not listed

Table 19(c): New Vehicle Registration

Type/Month	2016			2017*										
	Oct	Nov	Dec	Jan	Feb	Mar	April	May	June	July	Aug	Sep	Oct	Nov
Saloons	1,005	1,147	1,716	998	526	1,098	910	933	797	1,158	853	698	1,180	1,139
Station Wagon	3,860	4,311	6,918	4,091	2,294	4,661	4,148	4,869	4,025	5,670	4,309	3,600	5,904	5,951
Vans, Pick- ups	1,041	1,196	1,205	790	740	937	940	825	670	988	717	768	782	907
M/Buses	45	50	55	31	17	44	34	35	33	74	49	36	30	47
Buses	127	121	166	77	84	146	116	95	73	89	78	78	61	87
Lorries	643	770	726	535	522	610	579	638	535	636	564	725	653	729
Trailers	230	189	168	158	118	114	135	192	187	162	153	179	226	186
Motors Cycles	5,542	18,663	15,988	16,405	15,701	19,168	15,556	16,287	17,623	19,875	15,012	14,194	9,438	13,162
3 Wheelers	198	403	274	516	352	559	395	456	313	393	426	582	373	462
Wheeled tractors	213	315	129	234	290	302	194	326	173	229	191	209	177	203
Others	114	121	86	54	104	81	67	64	80	72	70	68	65	81
TOTAL	13,018	27,286	27,431	23,889	20,748	27,720	23,074	24,720	24,509	29,346	22,422	21,137	18,889	22,954

Source: Kenya Revenue Authority