



LEADING ECONOMIC INDICATORS



NOVEMBER 2016

LIST OF TABLES

Page Number

| | |
|---|----|
| Table 1(a): Kenya Consumer Price Indices..... | 4 |
| Table 1(b): Kenya Inflation rate | 5 |
| Table 2: Mean Foreign Exchange rates of Kenyan Shilling against Selected Major Currencies at the end of the Month | 7 |
| Table 3: Interest rates (%)..... | 8 |
| Table 4: Nairobi Securities Exchange..... | 9 |
| Table 5 (a): Money Supply | 11 |
| Table 5(b): Gross Foreign Exchange Reserves | 12 |
| Table 6: Coffee Sales and Prices | 14 |
| Table 7: Tea Production and Auction Prices | 15 |
| Table 8: Cane Deliveries | 16 |
| Table 9(a): Monthly Retail Prices for dry Maize, 2015 (per Kg)-..... | 18 |
| Table 9(b): Monthly Retail Prices for dry Maize, 2016 (per Kg)- | 19 |
| Table 9(c): Average Monthly Retail Prices for dry Beans, 2015 (per Kg) | 20 |
| Table 9(d): Average Monthly Retail Prices for dry Beans, 2016 (per Kg)..... | 21 |
| Table 10: Exports of Coffee and Tea | 22 |
| Table 11: Monthly Exports of Fresh Horticultural Produce | 23 |
| Table 12: External Trade | 24 |
| Table 13(a): Major Destinations of Domestic Exports | 25 |
| Table 13 (b): Domestic Exports by Broad Economic Category | 26 |
| Table 14(a): Major Origins of Imports | 27 |
| Table 14 (b): Imports by Broad Economic Category | 28 |
| Table 15(a): Local Electricity Generation by Source | 29 |
| Table 15(b): Generation and Consumption of Electricity | 31 |
| Table 15 (c): Consumption of Petroleum Fuels | 33 |
| Table 15 (d): Average Retail Prices for Selected Fuel Products within Nairobi | 34 |
| Table 15 (e): Average Retail Prices for Selected Fuels in Kenya | 35 |
| Table 15(f): Murban ADNOC Crude Oil Prices | 37 |
| Table 16: Value of Building Plans Approved by Nairobi City County Planning Compliance & Enforcement Department | 39 |
| Table 17(a): Domestic Production of Sugar | 40 |
| Table 17(b): Production of Soft Drinks | 41 |
| Table 17(c): Production of Assembled Vehicles | 42 |
| Table 17(d): Production of Galvanized Sheets..... | 42 |
| Table 17(e): Cement Production and Consumption | 43 |
| Table 17(f): Milk Intakes in the Formal Sector..... | 44 |
| Table 18: Visitor Arrivals through J.K.I.A and M.I.A..... | 46 |
| Table (19b): Jomo Kenyatta international airport- Landed Passengers by Port of Origin | 48 |
| Table 19 (c): New Vehicle Registration..... | 49 |

LIST OF FIGURES

Page Number

| | |
|---|----|
| Fig. 1: Inflation rates..... | 6 |
| Fig. 2: End of Month Mean Exchange rate of Kenya Shillings against Major Selected Currencies..... | 7 |
| Fig. 3: Nairobi Securities Exchange 20 Share Index | 10 |
| Fig. 4: Foreign Exchange Reserves | 13 |
| Fig.5: Coffee Sales at the Nairobi Coffee Exchange | 14 |
| Fig.6: Tea Production | 15 |
| Fig.7: Cane Deliveries | 17 |
| Fig. 8: Electricity Generation by Source..... | 30 |
| Fig. 9: Electricity Generation, Consumption and Power Losses..... | 32 |
| Fig. 10: Average Prices for Liquefied Petroleum Gas in Kenya ('000 KSh per 13 Kg cylinder) | 36 |
| Fig. 11: Trends for Different world Crude Oil Prices | 38 |
| Fig. 12: Milk Intake in the Formal Sector..... | 45 |
| Fig. 13: Visitor Arrivals through J.K.I.A and M.I.A | 46 |

KEY HIGHLIGHTS

OVERVIEW

The Leading Economic Indicators highlights trends in Consumer Price Indices (CPI) and inflation, interest rates, exchange rates, international trade, agriculture, energy, manufacturing, building and construction, tourism and transport.

MACROECONOMIC INDICATORS

Consumer Price Index (CPI) increased from 172.62 points in October 2016 to 173.85 points in November 2016. The overall rate of inflation rose from 6.47 per cent to 6.68 per cent during the same period. In November, 2016 the Kenyan Shilling appreciated against the Euro, the Japanese Yen and the Ugandan shilling while depreciating against other currencies.

The average yield rate for the 91-day Treasury bills, which is a benchmark for the general trend of interest rates, decreased from 8.06 per cent in September 2016 to 7.84 per cent in October 2016 while the inter-bank rate declined to 4.12 in October 2016 from 4.87 per cent in September 2016.

The Nairobi Securities Exchange (NSE) 20 share index contracted from 3,251 points in October 2016 to 3,247 points in November 2016, while the total number of shares traded increased from 351 million shares to 461 million shares during the same period. The total value of NSE shares traded increased from KSh 7.85 billion in October 2016 to KSh 10.44 billion in November 2016.

Broad money supply (M3), a key indicator for monetary policy formulation contracted from KSh 2,761.84 billion in September 2016 to KSh 2,750.41 billion in October 2016. Gross Foreign Exchange Reserves declined from KSh 1,070.31 billion in September 2016 to KSh 1,044.71 billion in October 2016. Net Foreign Exchange Reserves decreased from KSh 593.88 billion in September 2016 to KSh 576.03 billion in October 2016.

A). AGRICULTURE

The quantity of coffee auctioned at the Nairobi Coffee Exchange declined from 3,284.28 MT in September 2016 to 1,572.93 in October 2016 while the average auction price decreased from KSh 437.46 per kilogram to KSh 410.09 per Kilogram over the same period. The quantity of processed tea increased from 36,785.4 MT in September 2016 to 41,340.0 MT in October 2016. The price of the processed tea increased from KSh 235.92 to KSh 242.56 per kilogram over the same period.

The amount of cane deliveries increased from 556.81 thousand tonnes in August 2016 to 563.87 thousand tonnes in September 2016. Average price for dry maize rose from KSh 36.59 per kilogram in October 2016 to KSh 36.68 per kilogram in November 2016. The average price per Kilogram for dry

beans in the month of November 2016 was KSh 77.87. Milk deliveries to formal processors went up from 52.3 million litres in September 2016 to 53.4 million litres in October 2016.

The quantity of cutflower horticultural exports went up from 10,605.34 MT in September 2016 to 12,542.75 MT in October 2016 while the value of exports increased from KSh 4,465.33 million to KSh 6,072.96 million during the period. The volume of vegetable exports increased from 8,035.49 MT in September 2016 to 8,484.20 MT in October 2016. Similarly, the value in KSh million of vegetable exports expanded from 1,822.79 to 1,882.89 in the same period.

B). INTERNATIONAL TRADE

Quantity of coffee exported decreased from 3,172.8 MT in September 2016 to 3,116.1 MT in October 2016 while its value increased from KSh 1,398.5 million to KSh 1,489.2 million over the same period. The quantity of tea exported contracted from 33,528.5 MT in September 2016 to 29,655.6 MT in October 2016, while its value dropped from KSh 8,453.7 million to KSh 7,547.5 million over the same period.

Volume of trade contracted from KSh 170.6 billion in September 2016 to KSh 157.2 billion in October 2016. The total value of exports fell to KSh 42.09 billion while the value of imports decreased from KSh 124.4 billion in September 2016 to KSh 115.2 billion in October 2016.

Domestic exports by Broad Economic Category (BEC) indicated that food and beverages was the main export category in October 2016 accounting for 43.8 per cent of exports, while the value of non-food industrial supplies and consumer goods not elsewhere specified registered 26.6 and 25.5 per cent shares, respectively. BEC imports indicate that non-food industrial supplies was the main import category in October 2016 with a share of 33.4 per cent, while the values of machinery & other capital equipment, fuel and lubricants and transport registered shares of 19.3, 17.1 and 10.3 per cent, respectively. Food and beverage recorded a share of 9.0 per cent while consumer goods not elsewhere specified recorded a share of 11.0 per cent.

C). ENERGY

Total electricity generation decreased to 851.60 million KWh in November 2016 from 863.13 in October 2016. Domestic consumption of electricity contracted from 734.56 million KWh in October 2016 to 733.15 million KWh in November 2016.

In the international market, the price of Murban crude oil decreased from an average of US Dollars 51.35 per barrel in October, 2016 to US Dollars 46.15 per barrel in November, 2016. The national average domestic retail oil prices of motor gasoline premium went up from KSh 92.44 per litre in

October, 2016 to KSh 95.82 per litre retailed in November, 2016. The price of light diesel oil rose to retail at KSh 83.14 in November 2016 from KSh 83.03 in October, 2016. The average price for Kerosene went up to retail at KSh 63.13 in November 2016. Charcoal prices averaged KSh 79.07 while the price of a 13-Kg cylinder of gas averaged KSh 1,987.69 in November, 2016.

D). MANUFACTURING, BUILDING AND CONSTRUCTION

The quantity of cement produced declined from 518,020 MT in September, 2016 to 517,805 MT in October, 2016. Consumption of cement expanded from 494,165 MT in September 2016 to 497,014 MT in October 2016. Sugar production expanded from 52,232 Metric tonnes in August 2016 to 44,686 Metric tonnes in September 2016. Production of assembled vehicles increased from 605 units in August 2016 to 623 units in September 2016.

E). TOURISM AND TRANSPORT

The total number of visitors arriving through Jomo Kenyatta (JKIA) and Moi International Airports (MIA) decreased to 75,630 in September 2016 from 96,958 in August 2016. The number of passengers who landed at Jomo Kenyatta International Airport (JKIA) decreased from 179,210 in September 2016 to 179,517 in October 2016, while passengers who embarked decreased from 180,395 persons to 180,290 persons in the same period. The total number of vehicles registered increased to 18,527 in September 2016 from 18,288 in August 2016. Motorcycles and station wagons accounted for 42.9 per cent and 30.6 per cent, of total motor vehicles registered in September 2016, respectively.

Table 1(a): Kenya Consumer Price Indices
Kenya CPI: Base period February 2009=100

| Group | Nairobi | | | Nairobi Combined | Rest of Urban Areas | Kenya CPI |
|-------------|--------------|---------------|--------------|------------------|---------------------|-----------|
| | Lower Income | Middle Income | Upper Income | | | |
| 2015 | | | | | | |
| January | 155.65 | 136.19 | 136.86 | 150.24 | 155.67 | 153.43 |
| February | 156.51 | 136.25 | 136.66 | 150.87 | 156.42 | 154.14 |
| March | 158.81 | 137.09 | 137.07 | 152.75 | 158.04 | 155.86 |
| April | 161.85 | 137.74 | 137.67 | 155.12 | 161.2 | 158.7 |
| May | 162.09 | 138.95 | 138.93 | 155.63 | 163.03 | 159.98 |
| June | 162.47 | 140.7 | 139.25 | 156.34 | 163.34 | 160.46 |
| July | 162.74 | 141.17 | 141.35 | 156.72 | 163.26 | 160.57 |
| August | 162.78 | 141.66 | 143.53 | 156.96 | 163.66 | 160.9 |
| September | 163.13 | 142.04 | 143.35 | 157.3 | 164.15 | 161.33 |
| October | 164.26 | 141.93 | 143.05 | 158.07 | 164.98 | 162.13 |
| November | 166.02 | 141.75 | 142.7 | 159.29 | 165.55 | 162.97 |
| December | 167.48 | 145.22 | 143.34 | 161.2 | 167.18 | 164.72 |
| 2016 | | | | | | |
| January | 167.60 | 144.24 | 144.30 | 161.09 | 168.36 | 165.37 |
| February | 167.38 | 143.39 | 144.19 | 160.72 | 167.44 | 164.67 |
| March | 169.19 | 143.78 | 144.21 | 162.12 | 168.58 | 165.92 |
| April | 170.86 | 143.97 | 145.61 | 163.42 | 169.62 | 167.07 |
| May | 171.89 | 144.59 | 145.93 | 164.32 | 170.55 | 167.99 |
| June | 174.08 | 145.59 | 146.21 | 166.15 | 172.29 | 169.76 |
| July | 174.51 | 146.18 | 146.94 | 166.64 | 173.78 | 170.84 |
| August | 174.40 | 146.76 | 148.33 | 166.75 | 173.92 | 170.97 |
| September | 174.60 | 147.19 | 148.71 | 167.01 | 174.74 | 171.56 |
| October | 176.05 | 147.22 | 148.68 | 168.06 | 175.82 | 172.62 |
| November | 177.67 | 147.61 | 149.23 | 169.35 | 177.01 | 173.85 |

Notes

1. Nairobi Lower Income group - Households spending less than KSh 23,670 in October 2005

2. Nairobi Middle Income Group- Households spending between KSh 23,671 to KSh 119,999 in October 2005

3. Nairobi Upper Income Group - Households spending above KSh 120,000 in October 2005

Rest of Urban areas includes Mombasa, Malindi, Machakos, Nyeri, Thika, Nakuru, Kisii, Kisumu, Eldoret, Nyahururu, Garissa and Bungoma.

Table 1(b): Kenya Inflation rate

| Period | Inflation Rates | | | | | |
|-------------|----------------------|-----------------------|----------------------|------------------|---------------------|-----------|
| | Nairobi Lower Income | Nairobi Middle Income | Nairobi Upper Income | Nairobi Combined | Rest of Urban Areas | Kenya CPI |
| 2015 | | | | | | |
| January | 4.83 | 3.22 | 2.05 | 4.38 | 6.32 | 5.53 |
| February | 5.22 | 3.23 | 1.74 | 4.66 | 6.26 | 5.61 |
| March | 6.32 | 3.24 | 1.81 | 5.48 | 6.88 | 6.31 |
| April | 7.49 | 3.39 | 1.9 | 6.39 | 7.55 | 7.08 |
| May | 6.98 | 3.76 | 1.86 | 6.09 | 7.39 | 6.87 |
| June | 7.32 | 4.63 | 1.77 | 6.53 | 7.38 | 7.03 |
| July | 7.26 | 4.22 | 2.95 | 6.44 | 6.75 | 6.62 |
| August | 6.03 | 4.34 | 2.56 | 5.54 | 6.05 | 5.84 |
| September | 6.18 | 4.84 | 2.79 | 5.77 | 6.1 | 5.97 |
| October | 7.23 | 4.87 | 3.5 | 6.58 | 6.82 | 6.72 |
| November | 8.6 | 5.03 | 3.38 | 7.63 | 7.12 | 7.32 |
| December | 8.7 | 7.09 | 4.83 | 8.21 | 7.87 | 8.01 |
| 2016 | | | | | | |
| January | 7.68 | 5.91 | 5.44 | 7.22 | 8.16 | 7.78 |
| February | 6.95 | 5.24 | 5.51 | 6.53 | 7.05 | 6.84 |
| March | 6.54 | 4.88 | 5.21 | 6.13 | 6.67 | 6.45 |
| April | 5.57 | 4.52 | 5.76 | 5.35 | 5.22 | 5.27 |
| May | 6.05 | 4.06 | 5.02 | 5.58 | 4.61 | 5.00 |
| June | 7.15 | 3.48 | 5.00 | 6.28 | 5.48 | 5.80 |
| July | 7.24 | 3.55 | 3.95 | 6.33 | 6.44 | 6.39 |
| August | 7.14 | 3.60 | 3.35 | 6.24 | 6.27 | 6.26 |
| September | 7.03 | 3.62 | 3.74 | 6.17 | 6.45 | 6.34 |
| October | 7.18 | 3.73 | 3.93 | 6.32 | 6.57 | 6.47 |
| November | 7.02 | 4.13 | 4.58 | 6.32 | 6.92 | 6.68 |

Fig. 1: Inflation rates

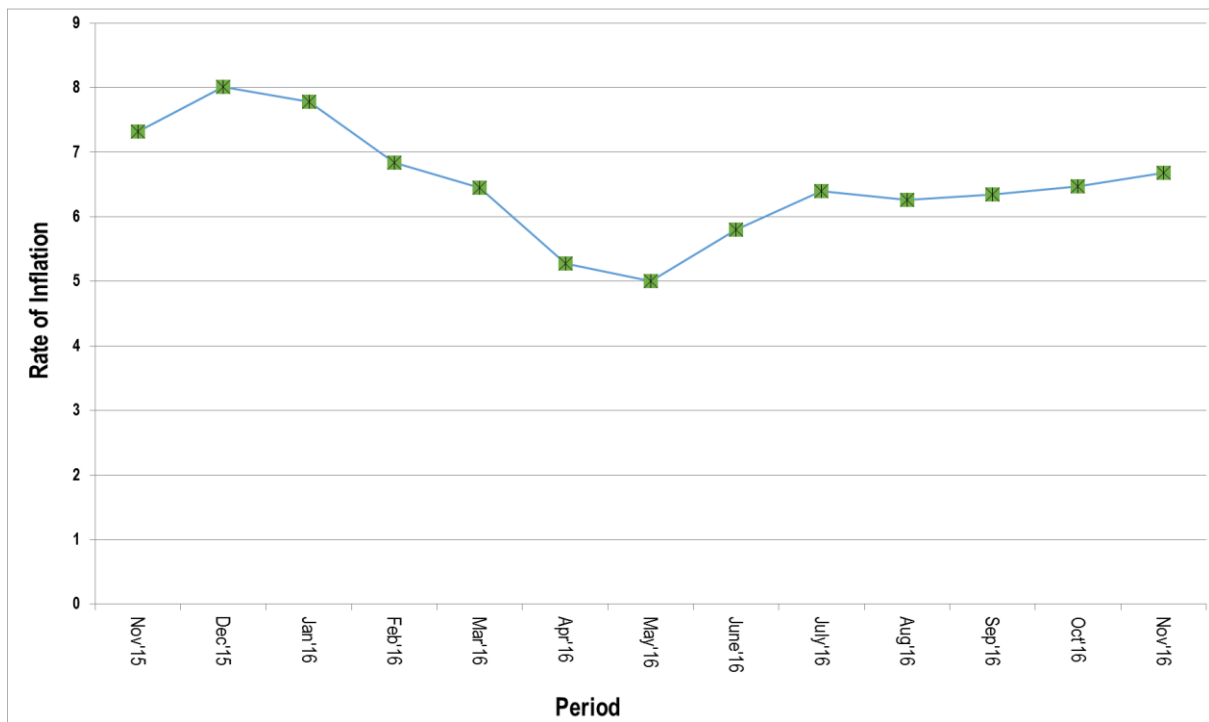


Table 2: Mean Foreign Exchange rates of Kenyan Shilling against Selected Major Currencies at the end of the Month

| Year | 2015 | | | | 2016* | | | | | | | | | | | |
|------------------|--------|-------|--------|--------|-------|------|--------|--------|--------|--------|--------|--------|--------|--------|--------|--|
| Currency | Sep | Oct | Nov | Dec | Jan | Feb | March | April | May | June | July | August | Sep | Oct | Nov | |
| 1 US Dollar | 105.27 | 102.8 | 102.15 | 102.19 | 102.3 | 102 | 101.49 | 101.23 | 100.73 | 101.14 | 101.33 | 101.41 | 101.27 | 101.32 | 101.75 | |
| 1 Sterling Pound | 161.54 | 157.5 | 155.35 | 153.25 | 147.6 | 146 | 144.24 | 144.79 | 146.27 | 144.32 | 133.42 | 132.89 | 133.15 | 125.47 | 126.29 | |
| 1 Euro | 118.23 | 115.4 | 109.86 | 111.08 | 111.1 | 113 | 112.6 | 114.84 | 113.96 | 113.69 | 112.1 | 113.66 | 113.48 | 111.88 | 109.98 | |
| 100 Japanese Yen | 84.73 | 85.62 | 83.47 | 83.87 | 86.6 | 88.5 | 89.86 | 92.4 | 92.48 | 95.85 | 97.24 | 100.24 | 99.33 | 97.78 | 94.27 | |
| 1 SA Rand | 7.72 | 7.61 | 7.21 | 6.83 | 6.27 | 6.46 | 6.57 | 6.92 | 6.58 | 6.73 | 7.02 | 7.4 | 7.21 | 7.27 | 7.32 | |
| USHS/KES | 34.82 | 35.4 | 33.57 | 32.88 | 33.68 | 33.7 | 33.15 | 33.04 | 33.21 | 33.26 | 33.34 | 33.25 | 33.4 | 33.88 | 34.93 | |
| TSHS/KES | 20.57 | 21.19 | 21.13 | 21.08 | 21.32 | 21.5 | 21.55 | 21.65 | 21.74 | 21.67 | 21.61 | 21.57 | 21.56 | 21.54 | 21.44 | |

Fig. 2: End of Month Mean Exchange rate of Kenya Shillings against Major Selected Currencies

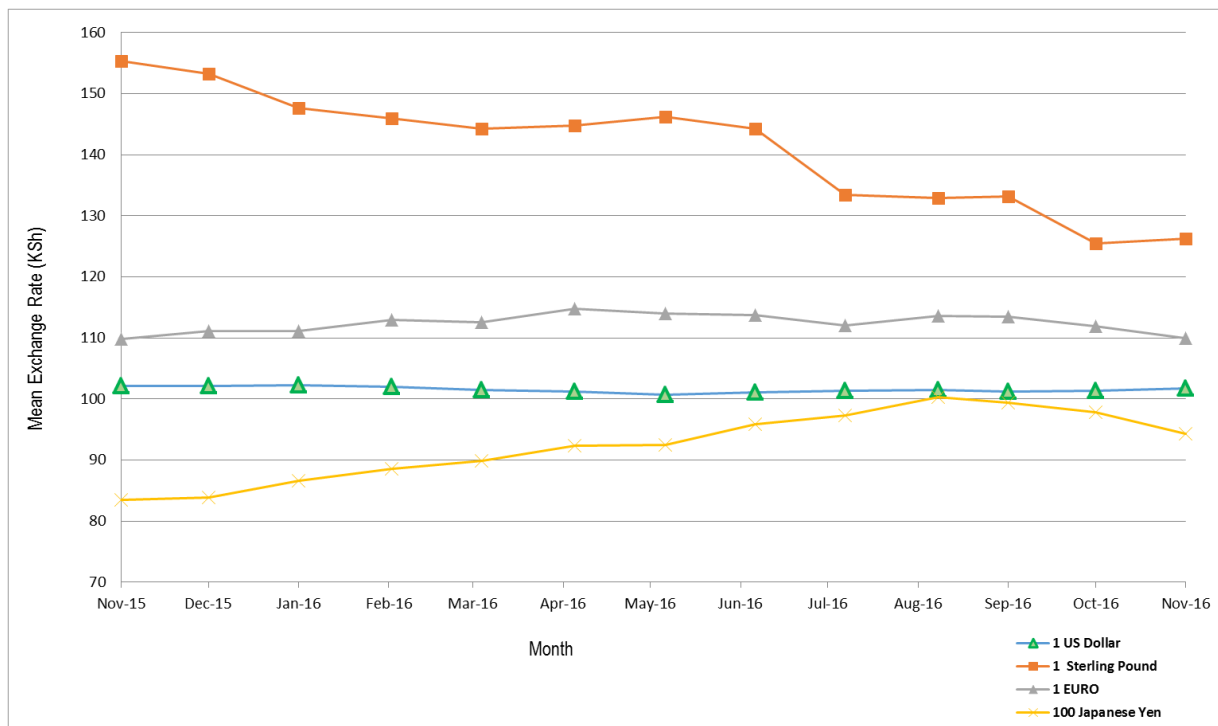


Table 3: Interest rates (%)

| Month/Year | Average Yield Rates 91 – Days Treasury Bills | Central Bank Rate | Rates for Commercial Banks Loans and Advances (Weighted Average) | Overdraft Rates | Average Deposit Rate | Inter – Bank Rates |
|-------------|--|-------------------|--|-----------------|----------------------|--------------------|
| 2015 | | | | | | |
| January | 8.59 | 8.50 | 15.93 | 15.95 | 6.65 | 7.12 |
| February | 8.59 | 8.50 | 15.47 | 15.67 | 6.68 | 6.77 |
| March | 8.49 | 8.50 | 15.46 | 15.68 | 6.63 | 6.85 |
| April | 8.42 | 8.50 | 15.40 | 15.52 | 6.60 | 8.77 |
| May | 8.26 | 8.50 | 15.26 | 15.10 | 6.55 | 11.17 |
| June | 8.26 | 10.00 | 16.06 | 15.67 | 6.64 | 11.78 |
| July | 10.57 | 11.50 | 15.75 | 16.05 | 6.31 | 12.89 |
| August | 11.54 | 11.50 | 15.68 | 15.98 | 6.91 | 18.80 |
| September | 14.61 | 11.50 | 16.82 | 16.61 | 7.28 | 19.85 |
| October | 21.65 | 11.50 | 16.58 | 16.81 | 7.54 | 14.82 |
| Nov | 12.34 | 11.50 | 17.16 | 17.44 | 7.39 | 8.77 |
| Dec | 9.81 | 11.50 | 18.30 | 18.48 | 8.02 | 7.27 |
| 2016 | | | | | | |
| January | 11.36 | 11.50 | 17.96 | 18.25 | 7.54 | 6.12 |
| February | 10.63 | 11.50 | 17.86 | 18.25 | 7.51 | 4.54 |
| March | 8.72 | 11.50 | 17.79 | 18.06 | 7.17 | 4.10 |
| April | 8.92 | 11.50 | 17.94 | 18.36 | 6.70 | 4.01 |
| May | 8.15 | 10.50 | 18.08 | 18.25 | 6.38 | 3.82 |
| June | 7.25 | 10.50 | 18.15 | 18.04 | 6.78 | 4.56 |
| July | 6.16 | 10.50 | 18.10 | 17.53 | 6.64 | 5.88 |
| August | 8.48 | 10.50 | 17.71 | 17.96 | 6.42 | 4.98 |
| September | 8.06 | 10.00 | 13.84 | 13.60 | 6.91 | 4.87 |
| October | 7.84 | 10.00 | 13.65 | 13.46 | 7.82 | 4.12 |

Source: Central Bank of Kenya

Table 4: Nairobi Securities Exchange

| Month | Number of Transactions | Number of Shares (Million) | Value of Shares (Million KSh) | NSE 20 Share Index |
|-------------|------------------------|----------------------------|-------------------------------|--------------------|
| 2015 | | | | |
| January | 39,813 | 414 | 9,715 | 5,212 |
| February | 42,387 | 593 | 16,109 | 5,491 |
| March | 44,715 | 614 | 20,516 | 5,346 |
| April | 36,148 | 488 | 14,642 | 5,091 |
| May | 35,782 | 684 | 21,331 | 4,788 |
| June | 33,367 | 681 | 24,251 | 4,906 |
| July | 33,598 | 715 | 21,554 | 4,405 |
| August | 31,973 | 734 | 20,792 | 4,176 |
| September | 30,706 | 434 | 14,375 | 4,173 |
| October | 27,975 | 540 | 17,837 | 3,869 |
| November | 27,068 | 441 | 13,149 | 4,016 |
| December | 23,100 | 474 | 15,109 | 4,040 |
| 2016 | | | | |
| January | 26,857 | 422 | 12,999 | 3,773 |
| February | 25,727 | 341 | 10,161 | 3,871 |
| March | 30,789 | 536 | 13,449 | 3,982 |
| April | 25,012 | 426 | 10,066 | 4,009 |
| May | 24,212 | 384 | 9,721 | 3,868 |
| June | 26,442 | 601 | 17,247 | 3,641 |
| July | 22,225 | 544 | 13,613 | 3,489 |
| August | 29,462 | 708 | 17,655 | 3,179 |
| September | 24,833 | 746 | 16,872 | 3,243 |
| October | 21,690 | 351 | 7,846 | 3,251 |
| November | 26,154 | 461 | 10,439 | 3,247 |

Base Jan 1966=100

Fig. 3: Nairobi Securities Exchange 20 Share Index

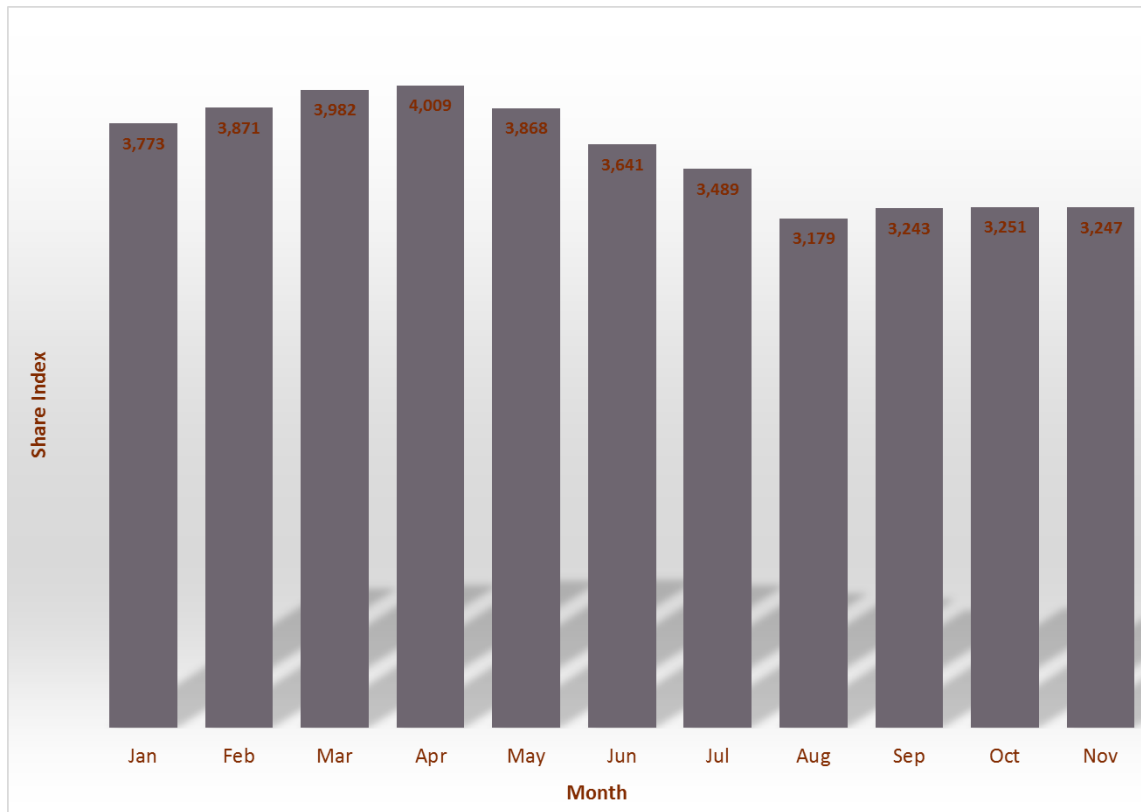


Table 5 (a): Money Supply

KSh million

| As at end of month | Money (M1)* | Quasi – Money | NBFI's** | Total (M2)*** | Foreign currency deposits | Broad Money (M3)**** | % Change |
|--------------------|-------------|---------------|----------|---------------|---------------------------|----------------------|----------|
| 2015 | | | | | | | |
| January | 939,593 | 1,048,266 | 215 | 1,987,644 | 362,943 | 2,350,587 | 0.89 |
| February | 946,469 | 1,085,214 | 231 | 2,031,452 | 376,143 | 2,407,595 | 2.43 |
| March | 971,266 | 1,075,503 | 258 | 2,046,511 | 351,992 | 2,398,503 | -0.38 |
| April | 999,702 | 1,087,511 | 204 | 2,087,009 | 377,268 | 2,464,277 | 2.74 |
| May | 991,192 | 1,107,838 | 222 | 2,098,808 | 402,558 | 2,501,366 | 1.51 |
| June | 1,000,097 | 1,138,796 | 231 | 2,138,662 | 413,461 | 2,552,123 | 2.03 |
| July | 1,016,663 | 1,126,180 | 588 | 2,142,255 | 406,725 | 2,548,980 | -0.12 |
| August | 1,015,251 | 1,146,383 | 568 | 2,161,066 | 408,811 | 2,569,877 | 0.82 |
| September | 979,788 | 1,153,975 | 410 | 2,133,353 | 422,694 | 2,556,047 | -0.54 |
| October | 1,022,867 | 1,159,720 | 310 | 2,182,277 | 392,430 | 2,574,707 | 0.73 |
| November | 1,025,979 | 1,165,967 | 273 | 2,191,673 | 412,834 | 2,604,507 | 1.16 |
| December | 1,023,672 | 1,211,413 | 288 | 2,234,797 | 423,369 | 2,658,166 | 2.06 |
| 2016 | | | | | | | |
| January | 1,044,549 | 1,157,786 | 249 | 2,202,086 | 411,624 | 2,613,710 | -1.67 |
| February | 1,039,668 | 1,191,865 | 342 | 2,231,191 | 396,228 | 2,627,419 | 0.53 |
| March | 1,076,765 | 1,186,193 | 272 | 2,262,686 | 399,938 | 2,662,624 | 1.34 |
| April | 1,101,052 | 1,185,282 | 281 | 2,286,053 | 405,680 | 2,691,733 | 1.09 |
| May | 1,113,811 | 1,184,907 | 250 | 2,298,468 | 410,286 | 2,708,754 | 0.63 |
| June | 1,131,343 | 1,199,984 | 475 | 2,330,852 | 422,815 | 2,753,667 | 1.67 |
| July | 1,107,635 | 1,190,124 | 901 | 2,296,858 | 416,108 | 2,712,966 | -1.46 |
| August | 1,112,409 | 1,192,953 | 1,063 | 2,304,299 | 434,574 | 2,738,873 | 0.96 |
| September | 1,236,724 | 1,087,513 | 3,410 | 2,320,827 | 441,014 | 2,761,841 | 0.80 |
| October | 1,272,055 | 1,063,400 | 3,359 | 2,332,096 | 418,318 | 2,750,414 | -0.41 |

Source: Central Bank of Kenya

* Currency in circulation less cash in banks plus all demand deposits except those of National & County government, Banks, non-residents and foreign currency deposits

** All other deposits in commercial banks, except those of National government.

***Broad money (M2) is the sum of M1, Quasi money in Banks and Quasi money in NBFIs..

**** Broad Money (M3) includes M2 and Foreign currency deposits

$M2=(M1+QM-NBFIs)$

$M3=M2+FCD$

Table 5(b): Gross Foreign Exchange Reserves

| KSh Million* | | | | | | | |
|--------------|----------------------------|-----------------------|----------------|------------------|-------|------------------|---------------------------------------|
| Month | Central Monetary Authority | | Total | Foreign Assets | | Gross Total | Net of Foreign Exchange Liabilities ^ |
| | Central Bank | National Government** | | Commercial Banks | NBFI | | |
| 2015 | | | | | | | |
| January | 702,738 | 1,832 | 704,570 | 185,797 | 158 | 890,525 | 473,974 |
| February | 713,564 | 1,827 | 715,391 | 195,345 | 151 | 910,887 | 488,461 |
| March | 707,206 | 1,805 | 709,011 | 196,899 | 111 | 906,021 | 463,813 |
| April | 704,648 | 1,888 | 706,536 | 217,211 | 151 | 923,898 | 468,129 |
| May | 711,734 | 1,930 | 713,664 | 227,781 | 196 | 941,641 | 449,477 |
| June | 708,191 | 1,972 | 710,163 | 223,077 | 160 | 933,400 | 437,495 |
| July | 707,262 | 2,032 | 709,294 | 234,350 | 295 | 943,939 | 414,935 |
| August | 710,823 | 2,070 | 712,893 | 235,842 | 204 | 948,939 | 406,805 |
| September | 683,381 | 2,070 | 685,451 | 230,411 | 168 | 916,030 | 391,419 |
| October | 737,960 | 2,070 | 740,030 | 208,656 | 80 | 948,766 | 438,570 |
| November | 726,542 | 2,070 | 728,612 | 229,787 | 180 | 958,579 | 447,906 |
| December | 765,127 | 2,070 | 767,197 | 231,129 | 643 | 998,969 | 493,468 |
| 2016 | | | | | | | |
| January | 758,250 | 1,997 | 760,247 | 219,676 | 1,019 | 980,942 | 475,193 |
| February | 763,307 | 1,983 | 765,290 | 196,827 | 449 | 962,565 | 458,840 |
| March | 786,160 | 2,017 | 788,177 | 202,897 | 348 | 991,422 | 473,459 |
| April | 803,930 | 2,027 | 805,957 | 210,085 | 138 | 1,016,180 | 504,797 |
| May | 799,984 | 1,998 | 801,982 | 208,686 | 185 | 1,010,853 | 511,128 |
| June | 826,995 | 1,992 | 828,987 | 225,644 | 380 | 1,055,011 | 560,343 |
| July | 819,852 | 1,987 | 821,839 | 224,735 | 139 | 1,046,713 | 555,943 |
| August | 819,867 | 1,987 | 821,854 | 224,052 | 373 | 1,046,279 | 579,206 |
| September | 824,645 | 1,987 | 826,631 | 243,270 | 404 | 1,070,305 | 593,880 |
| October | 810,612 | 1,954 | 812,566 | 232,025 | 117 | 1,044,707 | 576,031 |

Source: Central Bank of Kenya

* Includes encumbered reserves

**National Government includes reserve position in the Fund and deposits with Crown Agents.

^ Revised

Fig. 4: Foreign Exchange Reserves

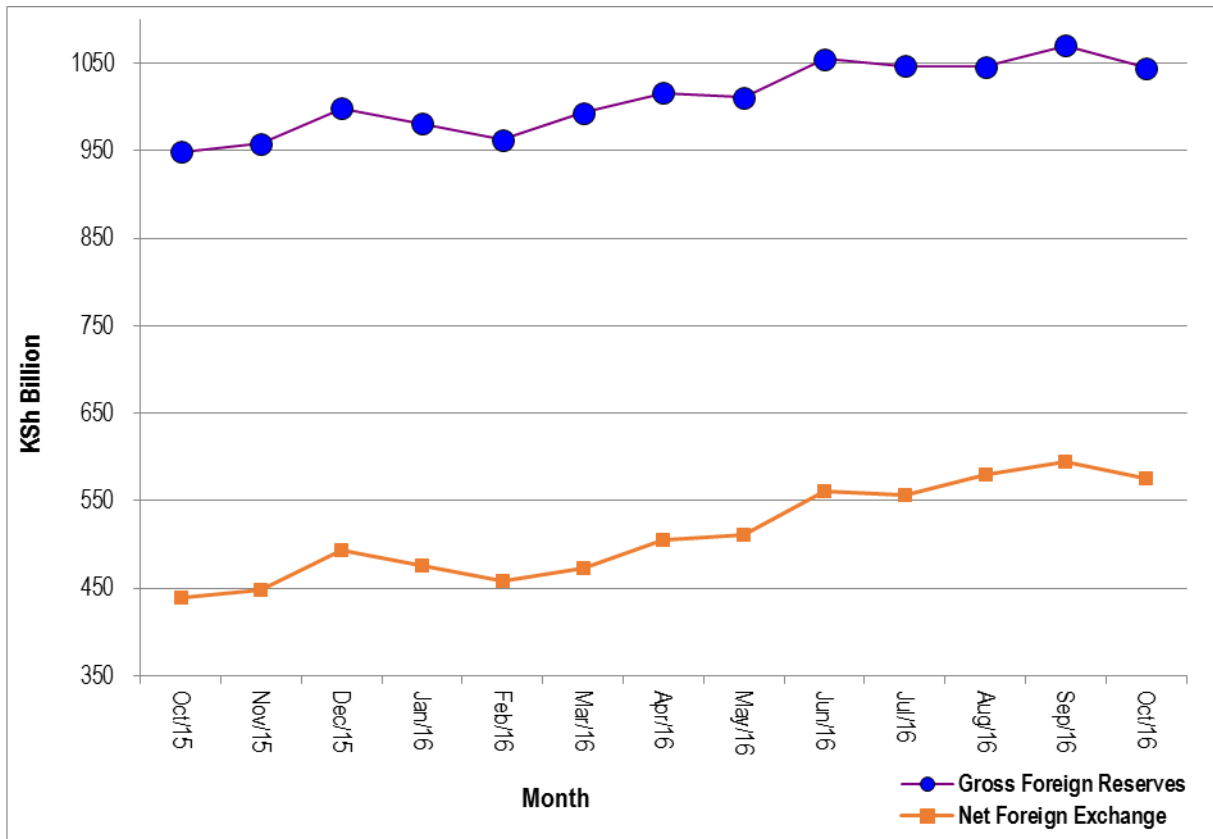


Table 6: Coffee Sales and Prices*

| Month | 2014 | | | 2015 | | | 2016*** | | |
|---------------|------------------|----------------|-----------------|------------------|----------------|-----------------|---------------|----------------|-----------------|
| | QUANTITY (MT) | PRICE (\$ /kg) | PRICE (Ksh /kg) | QUANTITY (MT) | PRICE (\$ /kg) | PRICE (Ksh /kg) | QUANTITY (MT) | PRICE (\$ /kg) | PRICE (Ksh /kg) |
| January | 2,850.00 | 3.40 | 293.39 | 2,795.04 | 4.51 | 411.64 | 3,432.03 | 4.51 | 461.78 |
| February | 5,382.00 | 4.62 | 398.62 | 4,838.10 | 5.35 | 489.26 | 5,219.72 | 4.77 | 485.71 |
| March | 6,212.00 | 5.31 | 459.34 | 5,569.92 | 4.12 | 378.17 | 6,835.21 | 4.31 | 437.29 |
| April | 6,611.00 | 4.52 | 392.22 | 3,713.07 | 3.32 | 310.42 | 4,513.44 | 3.36 | 339.66 |
| May | 3,747.00 | 3.99 | 349.47 | 2,966.46 | 3.00 | 288.92 | 4,734.79 | 2.61 | 262.90 |
| June** | 2,860.00 | 4.09 | 357.96 | - | - | - | 1,747.29 | 2.65 | 268.44 |
| July** | 1,292.00 | 3.59 | 314.67 | 2,085.54 | 3.35 | 339.49 | 568.89 | 3.20 | 324.01 |
| August | 3,214.00 | 4.33 | 381.16 | 3,286.29 | 3.62 | 371.21 | 3,723.02 | 4.25 | 430.63 |
| September | 3,424.00 | 4.55 | 404.29 | 2,643.10 | 3.46 | 363.96 | 3,284.28 | 4.32 | 437.46 |
| October | 2,801.00 | 4.74 | 422.76 | 1,768.47 | 3.11 | 319.60 | 1,572.93 | 4.05 | 410.09 |
| November | 1,703.00 | 4.56 | 410.25 | 1,267.96 | 3.30 | 337.27 | | | |
| December | 2,354.00 | 4.58 | 414.00 | 1,282.39 | 4.26 | 435.30 | | | |
| Annual | 42,450.00 | 4.36 | 383.18 | 32,216.00 | 3.45 | 337.10 | | | |

Source: Coffee Directorate

* Auction Price

NB: MT denotes Metric Tonnes

*** Provisional

** Nairobi Coffee Exchange was in recess for most of June 2015 & June/July 2016

Fig. 5: Coffee Sales at the Nairobi Coffee Exchange



Table 7: Tea Production and Auction Prices

| Months | 2013 | | | 2014 | | | 2015 | | | 2016* | | |
|-----------|---------------|---------------|----------------|---------------|---------------|----------------|---------------|---------------|----------------|---------------|---------------|----------------|
| | QUANTITY (MT) | PRICE (\$/Kg) | PRICE (KSh/Kg) | QUANTITY (MT) | PRICE (\$/Kg) | PRICE (KSh/Kg) | QUANTITY (MT) | PRICE (\$/Kg) | PRICE (KSh/Kg) | QUANTITY (MT) | PRICE (\$/Kg) | PRICE (KSh/Kg) |
| January | 45,390 | 3.28 | 284.11 | 44,970 | 2.74 | 235.57 | 41,653 | 2.32 | 211.8 | 50,308 | 2.72 | 278.50 |
| February | 38,503 | 3.09 | 270.61 | 33,774 | 2.35 | 202.55 | 24,276 | 2.42 | 221.42 | 43,969 | 2.48 | 252.82 |
| March | 33,368 | 2.81 | 240.73 | 33,336 | 2.16 | 186.93 | 15,688 | 2.72 | 249.85 | 45,330 | 2.30 | 233.60 |
| April | 38,230 | 2.5 | 210.09 | 39,975 | 2.16 | 187.59 | 23,837 | 2.77 | 258.38 | 37,571 | 2.11 | 213.89 |
| May | 39,600 | 2.56 | 214.54 | 41,186 | 2.06 | 179.49 | 37,523 | 3.09 | 296.7 | 36,573 | 2.21 | 222.84 |
| June | 30,530 | 2.44 | 208.59 | 31,945 | 2.03 | 177.9 | 32,286 | 3.27 | 319.4 | 35,603 | 2.40 | 242.50 |
| July | 26,229 | 2.44 | 211.89 | 30,790 | 2.28 | 199.85 | 30,942 | 3.39 | 343.76 | 29,285 | 2.43 | 246.44 |
| August | 26,338 | 2.38 | 208.13 | 26,756 | 2.17 | 191.27 | 28,410 | 3.21 | 329.53 | 29,462 | 2.31 | 234.27 |
| September | 32,800 | 2.19 | 191.06 | 33,321 | 2.01 | 178.32 | 36,484 | 3.1 | 326.69 | 36,785 | 2.33 | 235.92 |
| October | 44,283 | 2.05 | 174.39 | 45,368 | 2.02 | 180.48 | 41,343 | 3.24 | 333.37 | 41,340 | 2.39 | 242.56 |
| November | 35,463 | 2.17 | 186.71 | 38,614 | 2.02 | 181.71 | 40,382 | 3.06 | 312.62 | | | |
| December | 41,719 | 2.45 | 211.62 | 45,071 | 2.01 | 181.87 | 46,387 | 3.03 | 309.26 | | | |
| Annual | 432,453 | 2.53 | 217.71 | 445,106 | 2.17 | 190.29 | 399,211 | 2.96 | 291.23 | | | |

Source: Tea Directorate

MT denotes Metric Tonnes

*Provisional

Fig. 6: Tea Production

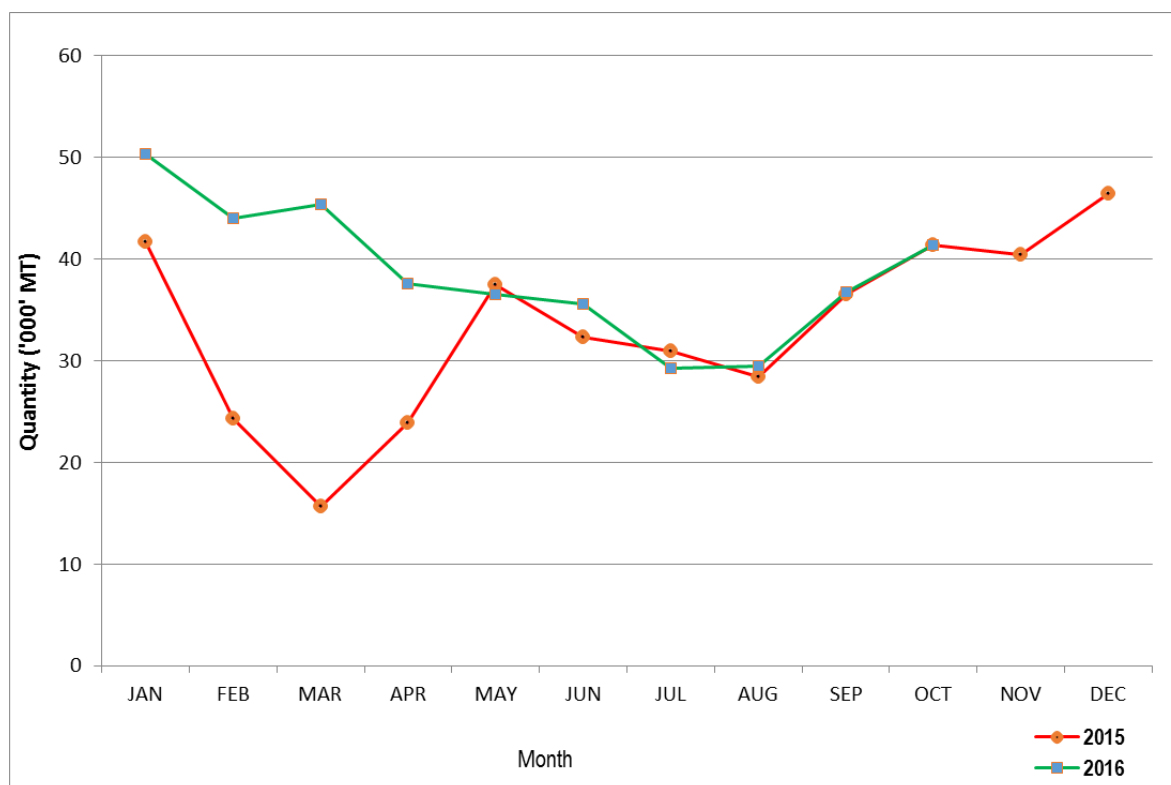


Table 8: Cane Deliveries

| Month | 000 Metric Tonnes | | | | | |
|--------------|--------------------------|-----------------|-----------------|-----------------|-----------------|--------------|
| | 2011 | 2012 | 2013 | 2014 | 2015 | 2016* |
| January | 540.53 | 601.90 | 564.50 | 693.47 | 647.34 | 670.46 |
| February | 537.61 | 565.90 | 530.00 | 620.51 | 585.21 | 640.51 |
| March | 582.05 | 605.50 | 516.70 | 645.88 | 645.07 | 757.06 |
| April | 542.74 | 469.30 | 442.70 | 543.85 | 521.26 | 576.69 |
| May | 490.58 | 369.20 | 414.80 | 533.67 | 529.33 | 526.67 |
| June | 452.20 | 571.40 | 583.40 | 523.75 | 544.01 | 629.67 |
| July | 301.60 | 438.00 | 639.50 | 593.20 | 558.98 | 613.66 |
| August | 314.03 | 466.40 | 622.30 | 547.65 | 585.74 | 556.81 |
| September | 328.10 | 371.90 | 543.10 | 533.43 | 619.35 | 563.87 |
| October | 330.59 | 370.90 | 569.40 | 467.11 | 550.81 | |
| November | 415.98 | 432.20 | 657.50 | 369.34 | 496.55 | |
| December | 502.56 | 453.70 | 587.90 | 405.79 | 565.57 | |
| Total | 5,338.56 | 5,716.30 | 6,671.70 | 6,477.65 | 6,849.23 | |

Source : Sugar Directorate

* Provisional

Fig. 7: Cane Deliveries

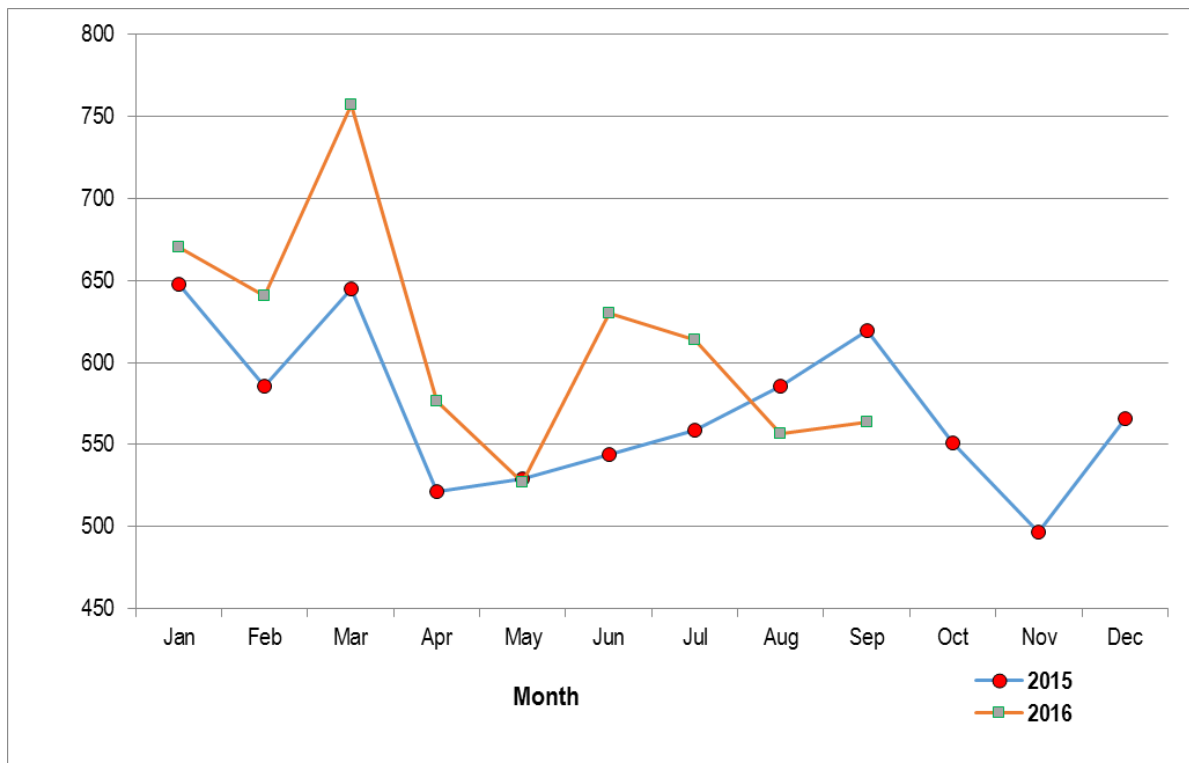


Table 10: Exports of Coffee and Tea

| Month | Coffee* | | Tea | |
|-------------|---------------|---------------------|---------------|---------------------|
| | Quantity (MT) | Value (KSh Million) | Quantity (MT) | Value (KSh Million) |
| 2015 | | | | |
| January | 2,843.80 | 1,306.50 | 40,970.10 | 8,484.70 |
| February | 2,883.60 | 1,338.50 | 41,086.20 | 9,313.40 |
| March | 4,289.50 | 2,025.10 | 35,699.60 | 8,796.10 |
| April | 3,948.30 | 1,900.50 | 28,262.10 | 7,189.10 |
| May | 4,382.80 | 2,235.80 | 27,016.30 | 7,505.70 |
| June | 4,219.90 | 2,068.10 | 35,914.80 | 11,262.80 |
| July | 3,938.30 | 1,943.00 | 30,623.00 | 10,146.40 |
| August | 3,991.10 | 1,790.30 | 27,687.50 | 9,481.00 |
| September | 3,404.90 | 1,617.40 | 33,528.10 | 11,412.80 |
| October | 4,399.90 | 2,019.10 | 40,246.10 | 13,538.30 |
| November | 2,769.30 | 1,243.50 | 36,714.20 | 12,126.00 |
| December | 2,528.10 | 1,092.00 | 42,779.40 | 13,768.20 |
| 2016 | | | | |
| January | 2,448.81 | 1,184.30 | 36,574.84 | 11,013.11 |
| February | 3,276.64 | 1,636.25 | 43,286.74 | 12,198.56 |
| March | 4,168.55 | 2,206.07 | 37,571.21 | 9,886.75 |
| April | 4,803.85 | 2,540.37 | 39,312.62 | 9,516.83 |
| May | 4,814.01 | 2,170.48 | 44,901.21 | 10,657.68 |
| June | 4,982.70 | 2,369.10 | 52,175.28 | 12,613.19 |
| July | 3,986.91 | 1,797.66 | 42,751.15 | 10,679.32 |
| August | 3,718.69 | 1,636.87 | 39,672.65 | 9,993.35 |
| September | 3,172.75 | 1,398.50 | 33,528.46 | 8,453.73 |
| October | 3,116.14 | 1,489.24 | 29,655.58 | 7,547.50 |

Table 11: Monthly Exports of Fresh Horticultural Produce

| Months | Cut Flowers | | | | Fruits | | | | Vegetables | | | |
|--------------|-------------------|---------------------|---------------|---------------------|------------------|---------------------|---------------|---------------------|------------------|---------------------|---------------|---------------------|
| | 2015 | | 2016* | | 2015 | | 2016* | | 2015 | | 2016* | |
| | Quantity (MT) | Value (KSh Million) | Quantity (MT) | Value (KSh Million) | Quantity (MT) | Value (KSh Million) | Quantity (MT) | Value (KSh Million) | Quantity (MT) | Value (KSh Million) | Quantity (MT) | Value (KSh Million) |
| January | 10,345.89 | 4,379.46 | 10,016.45 | 8,398.53 | 2,714.41 | 476.82 | 3,385.51 | 605.05 | 5,109.74 | 1,556.47 | 6,755.53 | 1,932.69 |
| February | 12,650.72 | 6,117.18 | 13,717.40 | 8,073.17 | 2,955.94 | 412.23 | 3,807.98 | 561.41 | 4,992.44 | 1,362.60 | 4,809.42 | 1,528.12 |
| March | 11,830.68 | 8,515.11 | 12,378.68 | 8,460.77 | 3,468.87 | 496.71 | 6,129.92 | 852.29 | 5,959.02 | 1,498.63 | 5,801.24 | 1,843.73 |
| April | 10,873.73 | 4,303.70 | 12,320.47 | 5,388.81 | 3,850.57 | 548.16 | 7,865.70 | 1,074.04 | 6,686.00 | 1,371.45 | 5,740.28 | 2,176.22 |
| May | 10,848.12 | 4,431.88 | 11,641.17 | 4,779.79 | 3,667.32 | 436.24 | 4,748.73 | 643.83 | 4,644.36 | 1,431.59 | 4,867.61 | 1,605.86 |
| June | 7,648.16 | 3,244.36 | 8,904.29 | 6,031.49 | 4,562.91 | 557.52 | 4,245.90 | 563.05 | 4,693.06 | 1,337.88 | 7,003.46 | 3,715.96 |
| July | 7,957.57 | 6,362.96 | 7,920.62 | 3,373.73 | 5,614.13 | 882.68 | 4,274.02 | 675.38 | 3,787.02 | 1,305.19 | 5,782.35 | 1,537.59 |
| August | 8,204.58 | 3,555.01 | 9,284.47 | 4,909.50 | 3,782.35 | 613.49 | 4,119.43 | 776.39 | 4,191.62 | 1,655.30 | 6,242.02 | 1,636.52 |
| September | 10,538.09 | 4,577.57 | 10,605.34 | 4,465.33 | 7,473.63 | 623.85 | 2,278.11 | 377.65 | 7,176.76 | 2,985.90 | 8,035.49 | 1,822.79 |
| October | 11,377.75 | 7,143.89 | 12,542.75 | 6,072.96 | 2,406.24 | 477.01 | 2,297.36 | 365.15 | 8,395.18 | 2,283.57 | 8,484.20 | 1,882.89 |
| November | 10,218.62 | 5,520.03 | | | 2,477.74 | 445.38 | | | 6,731.88 | 2,129.59 | | |
| December | 10,331.34 | 4,786.40 | | | 3,272.23 | 591.71 | | | 6,575.33 | 2,021.33 | | |
| Total | 122,825.25 | 62,937.53 | | | 46,246.35 | 6,561.80 | | | 68,942.41 | 20,939.49 | | |

Source: Horticultural Directorate

* Provisional

Table 12: External Trade

| | | | | | | KSh Million |
|-------------|------------------|------------|---------------|---------------|-----------------|------------------|
| Month | Domestic Exports | Re-Exports | Total Exports | Total Imports | Volume of Trade | Home use Imports |
| 2015 | | | | | | |
| January | 36,364.27 | 4,798.70 | 41,162.98 | 127,647.41 | 168,810.38 | 118,921.74 |
| February | 38,214.53 | 4,431.45 | 42,645.98 | 113,143.49 | 155,789.47 | 105,171.91 |
| March | 40,646.69 | 7,060.24 | 47,706.93 | 114,862.49 | 162,569.42 | 108,357.29 |
| April | 34,360.68 | 5,520.18 | 39,880.86 | 129,842.15 | 169,723.01 | 123,286.34 |
| May | 37,820.74 | 8,144.93 | 45,965.67 | 144,039.06 | 190,004.73 | 136,009.06 |
| June | 41,681.16 | 5,848.36 | 47,529.52 | 128,167.64 | 175,697.16 | 122,206.35 |
| July | 50,412.04 | 8,993.68 | 59,405.72 | 144,153.03 | 203,558.76 | 136,353.76 |
| August | 46,848.79 | 8,226.19 | 55,074.98 | 125,695.73 | 180,770.70 | 118,493.53 |
| September | 42,333.80 | 7,606.85 | 49,940.64 | 138,743.16 | 188,683.80 | 130,121.55 |
| October | 46,377.79 | 5,753.38 | 52,131.17 | 126,644.38 | 178,775.55 | 116,454.88 |
| November | 40,490.29 | 8,168.07 | 48,658.36 | 162,941.70 | 211,600.06 | 157,257.79 |
| December | 42,723.30 | 8,175.10 | 50,898.40 | 124,450.72 | 175,349.13 | 118,025.63 |
| 2016 | | | | | | |
| January | 41,031.83 | 6,991.69 | 48,023.52 | 106,483.22 | 154,506.74 | 100,529.56 |
| February | 42,955.50 | 9,334.42 | 52,289.92 | 100,563.00 | 152,852.92 | 95,003.53 |
| March | 46,509.32 | 7,520.30 | 54,029.62 | 114,420.68 | 168,450.30 | 110,210.01 |
| April | 43,133.94 | 3,463.50 | 46,597.45 | 124,916.24 | 171,513.69 | 118,549.72 |
| May | 45,498.10 | 4,363.61 | 49,861.71 | 116,150.20 | 166,011.91 | 110,031.89 |
| June | 42,940.90 | 5,272.14 | 48,213.04 | 127,317.35 | 175,530.39 | 117,981.12 |
| July | 41,009.16 | 7,037.22 | 48,046.37 | 117,320.56 | 165,366.93 | 109,567.16 |
| August | 41,123.68 | 5,907.54 | 47,031.22 | 133,003.52 | 180,034.74 | 111,020.07 |
| September | 40,276.61 | 5,927.63 | 46,204.24 | 124,427.15 | 170,631.38 | 118,410.20 |
| October | 35,581.26 | 6,508.13 | 42,089.39 | 115,152.67 | 157,242.07 | 108,844.70 |

Source: Kenya Revenue Authority

Table 13(a): Major Destinations of Domestic Exports

| KSh Million | | | | | | | | | | | |
|---------------|----------|----------|----------------|----------|-------------|----------|----------|----------|----------|----------------------|--------|
| Month/Country | Uganda | Tanzania | United Kingdom | Pakistan | Netherlands | Egypt | Germany | Rwanda | USA | United Arab Emirates | France |
| 2015 | | | | | | | | | | | |
| January | 4,129.75 | 1,845.98 | 3,303.53 | 2,038.42 | 3,263.35 | 938.80 | 895.35 | 987.35 | 2,761.33 | 1,504.67 | 266.20 |
| February | 4,603.10 | 1,924.58 | 3,521.23 | 2,991.93 | 3,817.43 | 1,244.07 | 769.03 | 817.21 | 2,510.70 | 1,593.14 | 283.40 |
| March | 4,575.63 | 2,032.98 | 3,506.74 | 1,779.07 | 3,273.94 | 1,606.88 | 1,104.37 | 1,043.73 | 3,153.90 | 1,765.96 | 385.98 |
| April | 4,176.25 | 1,992.44 | 2,662.68 | 1,339.86 | 3,034.07 | 1,622.47 | 917.48 | 922.92 | 2,572.42 | 1,281.74 | 503.17 |
| May | 4,506.22 | 2,116.28 | 2,684.86 | 1,749.61 | 2,590.16 | 1,315.10 | 1,120.34 | 1,106.18 | 3,125.32 | 1,574.39 | 514.21 |
| June | 4,622.60 | 2,325.81 | 2,669.45 | 3,508.27 | 2,115.87 | 1,846.40 | 732.75 | 1,647.42 | 3,538.50 | 1,744.16 | 515.46 |
| July | 9,451.92 | 2,734.77 | 3,863.50 | 2,802.79 | 3,022.62 | 2,052.62 | 951.40 | 2,013.88 | 4,384.38 | 2,107.33 | 541.22 |
| August | 6,792.77 | 1,890.89 | 4,119.67 | 1,967.67 | 4,301.98 | 1,427.61 | 829.01 | 1,638.71 | 4,929.54 | 2,072.14 | 694.40 |
| September | 4,723.29 | 1,828.48 | 3,348.33 | 3,487.17 | 2,539.10 | 1,622.20 | 628.41 | 1,307.60 | 3,211.99 | 1,193.96 | 651.06 |
| October | 4,621.63 | 2,452.54 | 3,899.10 | 4,507.04 | 3,193.84 | 2,274.65 | 1,069.96 | 1,243.59 | 2,937.77 | 1,562.07 | 502.45 |
| November | 3,810.47 | 2,061.46 | 3,211.04 | 4,302.42 | 2,418.91 | 1,431.72 | 668.67 | 1,136.34 | 3,954.21 | 1,804.15 | 374.06 |
| December | 4,031.48 | 2,203.30 | 3,185.52 | 4,628.50 | 2,611.03 | 1,991.42 | 696.63 | 1,236.25 | 3,327.55 | 2,227.32 | 412.40 |
| 2016 | | | | | | | | | | | |
| January | 3,923.06 | 2,097.31 | 3,843.82 | 2,499.36 | 3,564.66 | 1,553.87 | 618.73 | 973.12 | 2,830.16 | 1,710.21 | 407.36 |
| February | 3,508.53 | 2,076.69 | 3,455.76 | 2,558.67 | 3,504.64 | 1,797.12 | 674.96 | 1,127.02 | 3,101.10 | 2,679.19 | 361.21 |
| March | 4,636.78 | 3,033.42 | 3,489.70 | 2,342.85 | 4,815.73 | 1,879.78 | 1,323.44 | 1,210.29 | 3,129.16 | 2,043.04 | 565.88 |
| April | 5,701.19 | 2,502.44 | 3,162.46 | 2,446.12 | 3,483.37 | 2,038.98 | 1,491.59 | 1,436.49 | 2,977.65 | 2,193.83 | 584.67 |
| May | 3,723.09 | 2,838.01 | 2,971.70 | 3,139.20 | 3,593.22 | 1,798.00 | 1,067.47 | 1,045.91 | 3,359.82 | 2,882.70 | 499.65 |
| June | 3,973.20 | 1,909.92 | 3,106.22 | 4,989.16 | 3,009.93 | 1,788.62 | 835.26 | 1,272.85 | 3,739.77 | 2,198.01 | 535.32 |
| July | 4,104.43 | 1,530.53 | 3,042.03 | 3,370.61 | 2,695.37 | 2,068.33 | 907.17 | 1,138.05 | 4,827.91 | 2,301.17 | 530.24 |
| August | 4,206.21 | 2,019.18 | 2,985.90 | 3,188.76 | 2,479.58 | 1,791.48 | 778.37 | 1,380.37 | 3,747.38 | 2,148.34 | 491.59 |
| September | 4,233.11 | 1,796.76 | 2,781.90 | 3,014.18 | 3,026.77 | 1,835.19 | 969.31 | 1,206.52 | 4,352.97 | 1,912.79 | 665.57 |
| October | 3,851.33 | 1,858.54 | 2,115.34 | 2,945.51 | 2,537.94 | 1,060.08 | 829.21 | 985.96 | 3,308.12 | 1,586.51 | 518.47 |

Source: Kenya Revenue Authority (KRA)

Table 13 (b): Domestic Exports by Broad Economic Category

| Descriptions | Value in KSh Million | | | | | | | | | | | | | | | | | |
|--|----------------------|------------------|------------------|------------------|------------------|------------------|------------------|------------------|------------------|------------------|------------------|------------------|------------------|------------------|------------------|------------------|------------------|------------------|
| | 2015 | | | | | | | | | 2016 | | | | | | | | |
| | May | June | July | August | Sep | October | Nov | Dec | January | February | March | April | May | June | July | August | September | October |
| Food and beverages | 16,100.34 | 20,413.45 | 22,007.90 | 19,717.70 | 20,389.80 | 22,107.88 | 19,235.41 | 20,588.22 | 18,848.48 | 19,808.25 | 19,986.27 | 20,011.34 | 19,872.75 | 21,691.70 | 19,283.70 | 19,352.61 | 16,684.46 | 15,573.24 |
| Industrial supplies (Non-Food) | 9,439.63 | 10,061.36 | 14,086.60 | 12,088.59 | 10,013.33 | 10,962.91 | 10,114.43 | 10,454.88 | 10,212.60 | 10,109.95 | 12,239.02 | 10,021.04 | 10,318.52 | 9,619.93 | 8,983.21 | 9,808.56 | 10,282.47 | 9,462.29 |
| Fuel and Lubricants | 470.42 | 33.97 | 41.69 | 47.83 | 30.34 | 48.10 | 27.98 | 415.33 | 36.46 | 320.14 | 91.41 | 467.76 | 33.33 | 126.02 | 366.75 | 524.20 | 756.29 | 466.60 |
| Machinery & other capital Equipment | 1,178.08 | 1,015.23 | 633.15 | 531.28 | 366.34 | 1,200.65 | 737.58 | 555.37 | 656.93 | 1,719.98 | 779.69 | 1,454.79 | 2,335.82 | 590.69 | 966.73 | 1,131.70 | 1,418.63 | 620.15 |
| Transport equipment | 636.89 | 591.62 | 631.18 | 801.75 | 642.64 | 578.75 | 131.44 | 549.01 | 814.28 | 638.46 | 242.51 | 439.42 | 538.95 | 340.03 | 427.74 | 438.18 | 333.98 | 401.75 |
| Consumer goods Not elsewhere specified | 9,811.69 | 9,288.48 | 12,888.54 | 13,389.76 | 10,638.69 | 11,287.50 | 9,638.33 | 10,140.47 | 10,189.62 | 10,338.59 | 13,158.51 | 10,739.29 | 12,161.83 | 10,298.58 | 10,979.49 | 9,867.11 | 10,837.51 | 9,057.20 |
| Goods not elsewhere specified | 193.69 | 277.04 | 321.97 | 291.87 | 252.65 | 191.01 | 604.12 | 0.01 | 234.46 | 0.12 | 11.91 | 0.31 | 236.91 | 273.94 | 1.53 | 0.31 | 3.27 | 0.03 |
| Total | 37,820.74 | 41,681.16 | 50,412.04 | 46,848.79 | 42,333.80 | 46,377.79 | 40,480.29 | 42,723.30 | 41,021.83 | 42,855.50 | 46,589.32 | 43,133.34 | 45,488.10 | 42,940.80 | 41,088.16 | 41,123.68 | 40,276.81 | 35,581.28 |
| Percentage Shares: | | | | | | | | | | | | | | | | | | |
| Food and Beverages | 42.57 | 49.98 | 43.66 | 42.09 | 48.16 | 47.67 | 47.51 | 48.21 | 45.94 | 46.11 | 42.97 | 46.39 | 43.68 | 50.52 | 47.02 | 47.06 | 41.38 | 43.77 |
| Industrial Supplies (Non-Food) | 24.96 | 24.14 | 27.94 | 25.8 | 23.65 | 23.64 | 24.98 | 24.47 | 24.89 | 23.54 | 26.32 | 23.23 | 22.68 | 22.40 | 21.91 | 23.85 | 25.48 | 26.59 |
| Fuel and Lubricants | 1.24 | 0.08 | 0.08 | 0.10 | 0.07 | 0.10 | 0.07 | 0.97 | 0.09 | 0.75 | 0.20 | 1.08 | 0.07 | 0.29 | 0.89 | 1.27 | 1.88 | 1.31 |
| Machinery and other Capital Equipment... | 3.11 | 2.44 | 1.26 | 1.13 | 0.87 | 2.59 | 1.82 | 1.32 | 1.70 | 4.00 | 1.68 | 3.37 | 5.13 | 1.38 | 2.36 | 2.75 | 3.52 | 1.74 |
| Transport Equipment | 1.66 | 1.42 | 1.25 | 1.71 | 1.52 | 1.25 | 0.32 | 1.29 | 1.98 | 1.49 | 0.52 | 1.02 | 1.18 | 0.79 | 1.04 | 1.07 | 0.83 | 1.13 |
| Consumer Goods not elsewhere specified | 25.94 | 22.28 | 25.17 | 28.54 | 25.13 | 24.34 | 23.81 | 23.74 | 24.83 | 24.11 | 28.29 | 24.90 | 26.73 | 23.98 | 26.77 | 23.99 | 26.91 | 25.45 |
| Goods not elsewhere specified | 0.51 | 0.66 | 0.64 | 0.62 | 0.60 | 0.41 | 1.49 | 0.00 | 0.57 | 0.00 | 0.03 | 0.00 | 0.52 | 0.64 | 0.00 | 0.00 | 0.01 | 0.00 |
| TOTAL | 100 | 100 | 100 | 100 | 100 | 100 | 100 | 100 | 100 | 100 | 100 | 100 | 100 | 100 | 100 | 100 | 100 | 100 |

Source: Kenya Revenue Authority

Table 14(a): Major Origins of Imports

| Month | Value (KSh Million) | | | | | | | | | | |
|-------------|----------------------|----------------|--------------|--------------|----------|-----------|-----------|----------|-------------|----------|-----------|
| | United Arab Emirates | United Kingdom | South Africa | Saudi Arabia | Japan | India | USA | Germany | Netherlands | France | China |
| 2015 | | | | | | | | | | | |
| January | 4,241.70 | 3,262.91 | 4,864.22 | 8,660.30 | 6,064.29 | 25,324.59 | 9,458.10 | 3,332.60 | 1,631.96 | 1,358.02 | 23,584.96 |
| February | 3,502.17 | 2,650.96 | 3,480.56 | 3,745.31 | 5,538.28 | 20,200.69 | 4,723.50 | 3,844.20 | 2,012.33 | 1,197.07 | 24,306.18 |
| March | 4,521.20 | 3,449.93 | 6,001.53 | 5,252.61 | 6,856.42 | 20,037.67 | 4,094.78 | 3,428.34 | 512.05 | 1,581.76 | 24,463.78 |
| April | 10,849.03 | 3,904.07 | 4,820.13 | 5,253.10 | 8,333.61 | 15,105.19 | 12,854.52 | 3,716.57 | 1,683.82 | 1,528.37 | 21,299.47 |
| May | 5,591.95 | 3,981.10 | 5,147.73 | 8,078.25 | 7,315.89 | 24,414.27 | 16,706.58 | 3,955.03 | 1,822.08 | 1,739.29 | 28,897.81 |
| June | 8,787.21 | 3,005.05 | 4,861.35 | 3,025.77 | 7,137.94 | 24,525.65 | 3,934.59 | 6,712.35 | 1,638.01 | 1,801.48 | 27,288.43 |
| July | 9,915.60 | 7,399.11 | 5,669.82 | 7,550.45 | 7,631.36 | 13,234.71 | 4,876.75 | 4,617.59 | 4,007.03 | 1,985.13 | 33,730.22 |
| August | 13,025.66 | 3,339.95 | 5,226.91 | 1,740.16 | 8,591.97 | 19,933.26 | 3,975.56 | 4,811.23 | 1,744.41 | 1,709.18 | 26,367.40 |
| September | 6,359.83 | 3,015.03 | 6,017.80 | 2,045.71 | 7,924.61 | 23,958.40 | 4,395.25 | 3,584.25 | 884.14 | 2,273.22 | 35,636.59 |
| October | 8,727.84 | 3,180.64 | 6,303.21 | 6,906.28 | 7,781.43 | 18,567.20 | 3,018.76 | 3,149.20 | 900.45 | 2,270.42 | 28,220.21 |
| November | 6,151.67 | 2,965.53 | 5,519.53 | 2,462.09 | 7,678.54 | 23,353.67 | 49,516.52 | 3,068.53 | 2,297.31 | 1,187.43 | 21,602.21 |
| December | 8,898.78 | 2,849.78 | 3,734.63 | 1,530.80 | 7,777.44 | 24,535.19 | 8,496.48 | 3,168.51 | 1,405.09 | 2,437.42 | 25,491.00 |
| 2016 | | | | | | | | | | | |
| January | 4,944.12 | 2,281.69 | 3,454.89 | 5,180.36 | 6,099.76 | 16,504.76 | 3,375.95 | 4,087.76 | 1,126.96 | 1,872.24 | 23,566.97 |
| February | 6,068.13 | 1,879.43 | 2,838.07 | 2,505.01 | 8,025.95 | 17,887.55 | 3,785.35 | 3,573.48 | 1,779.87 | 1,752.57 | 21,052.54 |
| March | 3,491.63 | 3,123.86 | 3,629.19 | 5,404.12 | 6,376.63 | 22,701.65 | 3,888.18 | 3,811.14 | 959.60 | 1,916.11 | 20,660.58 |
| April | 7,156.64 | 2,879.14 | 3,630.97 | 8,121.33 | 7,501.83 | 19,604.67 | 6,075.75 | 3,915.25 | 991.53 | 1,729.28 | 27,541.03 |
| May | 5,189.51 | 3,216.21 | 4,750.80 | 3,068.11 | 6,010.64 | 20,838.39 | 3,935.67 | 3,841.98 | 2,042.26 | 1,573.44 | 24,846.52 |
| June | 11,660.16 | 3,107.93 | 4,552.57 | 5,659.98 | 6,237.09 | 16,796.96 | 4,487.71 | 4,211.81 | 663.50 | 1,906.39 | 32,594.68 |
| July | 11,581.22 | 2,614.25 | 4,625.82 | 6,172.08 | 7,829.89 | 10,611.81 | 4,954.64 | 3,803.33 | 1,104.88 | 2,061.78 | 29,349.04 |
| August | 9,867.03 | 3,076.29 | 4,258.68 | 5,117.55 | 8,170.21 | 15,778.03 | 3,820.56 | 2,934.68 | 2,306.82 | 1,932.58 | 39,323.61 |
| September | 10,289.85 | 2,386.76 | 4,977.14 | 5,272.35 | 6,748.59 | 13,651.83 | 3,616.06 | 3,073.59 | 915.92 | 1,907.45 | 29,743.90 |
| October | 9,442.04 | 3,063.13 | 3,886.01 | 9,386.20 | 5,079.91 | 16,570.87 | 2,624.11 | 2,878.50 | 844.92 | 1,574.34 | 26,362.46 |

Table 14 (b): Imports by Broad Economic Category

| | Value in KSh Million | | | | | | | | | |
|--|----------------------|----------------|----------------|----------------|----------------|----------------|----------------|----------------|----------------|----------------|
| | 2016 | | | | | | | | | |
| | Jan | Feb | March | April | May | June | July | August | Sep | Oct |
| Food and beverages | 9,902.57 | 8,487.21 | 7,767.76 | 9,354.02 | 10,642.87 | 9,644.42 | 8,743.03 | 8,421.21 | 10,065.82 | 10,341.06 |
| Industrial supplies (non-food) | 40,255.32 | 37,562.13 | 42,597.98 | 44,532.43 | 41,548.48 | 43,186.65 | 44,097.12 | 48,154.49 | 44,827.13 | 38,439.50 |
| Fuel and lubricants | 13,115.44 | 12,229.29 | 14,269.20 | 16,813.86 | 16,324.37 | 20,178.69 | 17,556.37 | 18,615.43 | 19,054.90 | 19,741.54 |
| machinery & other capital equipment | 20,625.28 | 21,749.05 | 24,184.33 | 27,867.68 | 22,934.13 | 30,546.99 | 23,770.62 | 32,488.94 | 26,940.44 | 22,168.72 |
| Transport equipment | 11,005.90 | 10,572.54 | 11,979.14 | 12,481.25 | 12,034.33 | 14,397.56 | 12,711.00 | 13,353.62 | 12,232.51 | 11,802.18 |
| Consumer goods not elsewhere specified | 8,420.70 | 7,952.73 | 10,736.49 | 11,380.21 | 10,386.49 | 9,331.92 | 10,335.49 | 11,939.98 | 11,248.81 | 12,632.25 |
| Goods not elsewhere specified | 3,157.74 | 2,030.17 | 2,885.79 | 2,486.79 | 2,279.53 | 31.13 | 106.92 | 29.85 | 57.54 | 27.41 |
| Total | 106,483 | 100,583 | 114,421 | 124,916 | 116,150 | 127,317 | 117,321 | 133,004 | 124,427 | 115,153 |
| Food and beverages | 9.30 | 8.44 | 6.79 | 7.49 | 9.16 | 7.58 | 7.45 | 6.33 | 8.09 | 8.98 |
| Industrial supplies (non-food) | 37.80 | 37.34 | 37.23 | 35.65 | 35.77 | 33.92 | 37.59 | 36.21 | 36.03 | 33.38 |
| Fuel and lubricants | 12.32 | 12.16 | 12.47 | 13.46 | 14.05 | 15.85 | 14.96 | 14.00 | 15.31 | 17.14 |
| Machinery and other capital equipment... | 19.37 | 21.62 | 21.14 | 22.31 | 19.75 | 23.99 | 20.26 | 24.43 | 21.65 | 19.25 |
| Transport equipment | 10.34 | 10.51 | 10.47 | 9.99 | 10.36 | 11.31 | 10.83 | 10.04 | 9.83 | 10.25 |
| Consumer goods not elsewhere specified | 7.91 | 7.91 | 9.38 | 9.11 | 8.94 | 7.33 | 8.81 | 8.98 | 9.04 | 10.97 |
| Goods not elsewhere specified | 2.97 | 2.02 | 2.52 | 1.99 | 1.96 | 0.02 | 0.09 | 0.02 | 0.05 | 0.02 |
| TOTAL | 100 | 100 | 100 | 100 | 100 | 100 | 100 | 100 | 100 | 100 |

Source: Kenya Revenue Authority

Table 15(a): Local Electricity Generation by Source

| Month | KWh Million | | | |
|-------------|-------------|---------------|---------|--------|
| | Hydro | Geo - Thermal | Thermal | Total |
| 2015 | | | | |
| April | 264.24 | 359.47 | 120.77 | 744.48 |
| May | 301.03 | 379.97 | 103.09 | 784.09 |
| June | 297.28 | 362.30 | 109.11 | 768.69 |
| July | 305.24 | 353.06 | 142.90 | 801.20 |
| August | 318.62 | 377.56 | 111.57 | 807.75 |
| September | 306.34 | 388.99 | 99.00 | 794.33 |
| October | 310.00 | 402.15 | 99.67 | 811.82 |
| November | 300.19 | 392.55 | 88.88 | 781.62 |
| December | 306.66 | 387.45 | 92.11 | 786.22 |
| 2016 | | | | |
| January | 322.49 | 392.00 | 93.03 | 807.52 |
| February | 296.75 | 391.65 | 95.42 | 783.81 |
| March | 334.51 | 383.11 | 112.23 | 829.85 |
| April | 303.46 | 394.48 | 101.92 | 799.86 |
| May | 334.37 | 403.45 | 92.20 | 830.02 |
| June | 348.09 | 341.92 | 113.36 | 803.37 |
| July | 336.92 | 392.99 | 109.66 | 839.58 |
| August | 363.61 | 345.00 | 137.71 | 846.32 |
| September | 348.63 | 335.37 | 136.66 | 820.66 |
| October | 356.88 | 363.93 | 135.21 | 856.02 |
| November | 314.93 | 369.05 | 157.90 | 841.88 |

Source : Kenya Power & Lighting Company Limited

Fig. 8: Electricity Generation by Source

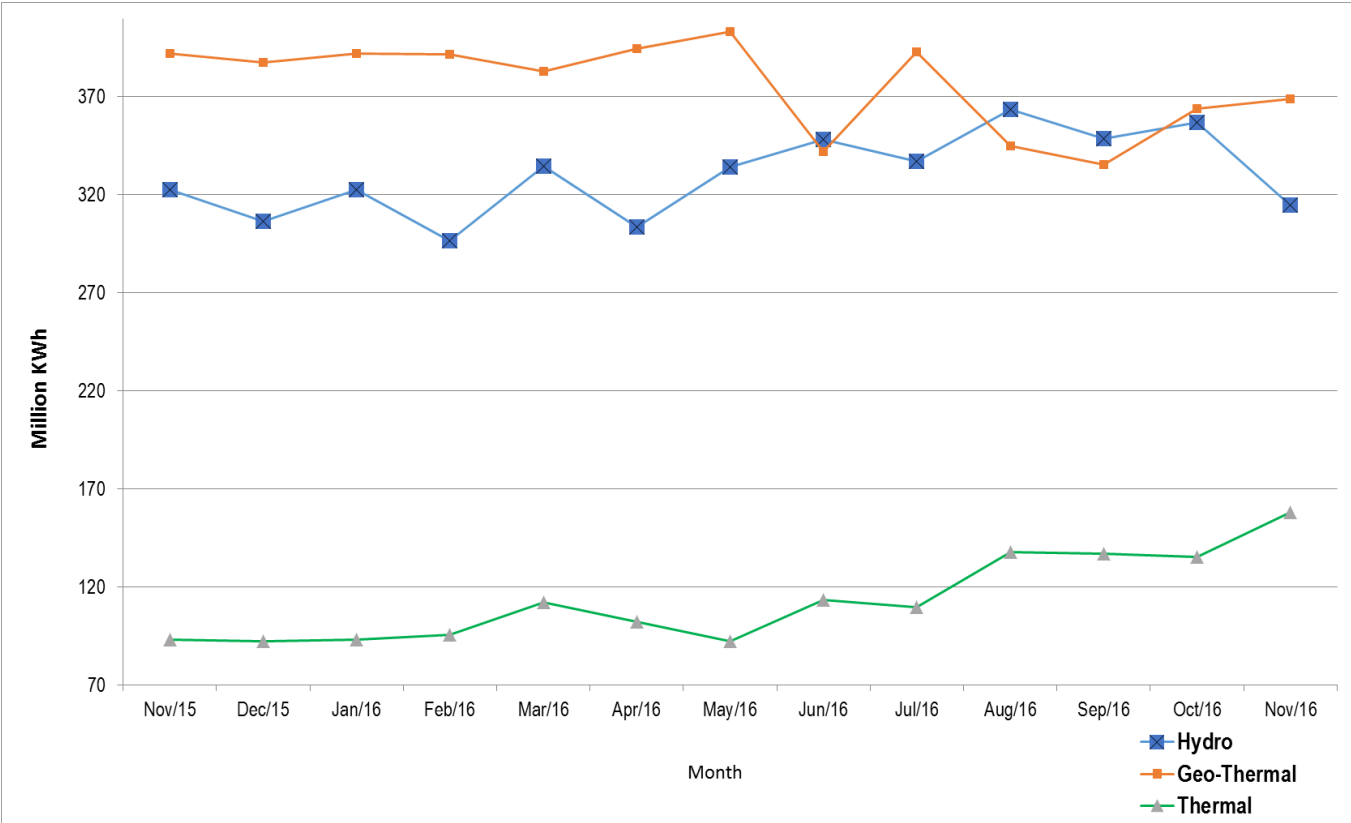


Table 15(b): Generation and Consumption of Electricity

| Million KWh | | | | | | | | | | | | | | |
|----------------|------------------|---------|----------|----------|-------|------------------|------------------|------------------|-----------------------|---------|----------|---------------|-------------------|--------------|
| Month | Generation | | | | | | | Consumption | | | | | | |
| | Local Generation | Imports | | | | | Total Generation | Total KPLC Sales | Rural Electrification | Exports | | | Total Consumption | Power Losses |
| | | Uganda | Tanzania | Ethiopia | Total | EPPS (Aggregate) | | | | Uganda | Tanzania | Total Exports | | |
| December 2015 | 757.59 | 5.14 | - | 0.23 | 5.37 | 3.15 | 766.11 | 611.12 | 41.73 | 3.70 | 0.16 | 3.86 | 652.85 | 113.26 |
| January | 775.83 | 4.85 | - | 0.26 | 5.11 | 7.29 | 788.23 | 601.25 | 41.29 | 4.02 | 0.17 | 4.19 | 642.54 | 145.69 |
| February | 702.73 | 4.12 | - | 0.24 | 4.36 | 10.30 | 717.40 | 611.57 | 42.90 | 2.50 | 0.16 | 2.66 | 654.47 | 62.93 |
| March | 756.87 | 4.34 | - | 0.26 | 4.60 | 11.60 | 772.11 | 600.39 | 45.21 | 3.62 | 0.19 | 3.81 | 645.60 | 126.51 |
| April | 744.48 | 3.82 | - | 0.22 | 4.04 | 3.43 | 751.95 | 662.15 | 42.07 | 3.69 | 0.18 | 3.87 | 704.22 | 47.73 |
| May | 768.69 | 4.51 | - | 0.24 | 4.75 | 3.17 | 776.61 | 626.76 | 51.83 | 3.64 | 0.17 | 3.81 | 678.59 | 101.98 |
| June | 775.83 | 4.85 | - | 0.26 | 5.11 | 7.29 | 788.23 | 601.25 | 41.29 | 4.02 | 0.17 | 4.19 | 642.54 | 145.69 |
| July | 801.20 | 4.56 | - | 0.22 | 4.78 | 4.48 | 810.46 | 577.48 | 40.12 | 3.84 | 0.19 | 4.03 | 617.60 | 192.86 |
| August | 807.75 | 4.33 | - | 0.23 | 4.56 | 3.59 | 815.90 | 665.17 | 39.83 | 3.89 | 0.19 | 4.08 | 705.01 | 110.89 |
| September | 794.33 | 4.33 | - | 0.15 | 4.48 | 2.72 | 801.53 | 713.51 | 41.17 | 3.83 | 0.18 | 4.01 | 754.68 | 46.85 |
| October | 811.82 | 4.54 | - | 0.21 | 4.75 | 4.90 | 821.47 | 654.12 | 41.16 | 3.95 | 0.20 | 4.15 | 695.28 | 126.19 |
| November | 781.62 | 5.62 | - | 0.23 | 5.85 | 5.13 | 792.60 | 632.31 | 39.29 | 3.27 | 0.17 | 3.44 | 671.59 | 121.01 |
| December 2016* | 786.22 | 6.66 | - | 0.21 | 6.87 | 4.21 | 797.30 | 627.14 | 37.47 | 3.33 | 0.17 | 3.44 | 664.61 | 132.69 |
| January | 807.52 | 6.40 | - | 0.22 | 6.62 | 4.10 | 818.24 | 667.70 | 41.93 | 3.38 | 0.17 | 3.55 | 709.63 | 108.61 |
| February | 783.81 | 5.26 | - | 0.26 | 5.52 | 3.17 | 792.50 | 633.85 | 39.62 | 3.56 | 0.19 | 3.56 | 673.47 | 119.03 |
| March | 829.85 | 5.94 | - | 0.26 | 6.20 | 5.79 | 841.84 | 670.92 | 41.60 | 3.50 | 0.20 | 3.50 | 712.52 | 129.32 |
| April | 799.86 | 5.22 | - | 0.17 | 5.39 | 5.09 | 810.34 | 665.97 | 41.82 | 3.22 | 0.20 | 3.42 | 707.79 | 102.55 |
| May | 830.02 | 5.68 | - | 0.19 | 5.87 | 3.53 | 839.42 | 694.85 | 40.85 | 3.44 | 0.18 | 3.62 | 735.70 | 103.72 |
| June | 803.37 | 6.07 | - | 0.28 | 6.35 | 3.77 | 813.49 | 708.71 | 42.39 | 3.33 | 0.19 | 3.52 | 751.10 | 62.39 |
| July | 839.58 | 6.22 | - | 0.30 | 6.52 | 0.80 | 846.90 | 661.09 | 42.62 | 3.33 | 0.16 | 3.49 | 703.71 | 143.19 |
| August | 846.32 | 6.96 | - | 0.28 | 7.23 | - | 853.55 | 687.90 | 40.82 | 2.96 | 0.13 | 3.09 | 728.72 | 124.83 |
| September | 820.66 | 7.00 | - | 0.27 | 7.27 | - | 827.93 | 637.79 | 42.08 | 3.01 | 0.15 | 3.16 | 679.87 | 148.06 |
| October | 856.02 | 6.83 | - | 0.28 | 7.11 | - | 863.13 | 692.48 | 42.08 | 4.11 | 0.20 | 4.31 | 734.56 | 128.57 |
| November | 841.88 | 9.45 | - | 0.27 | 9.72 | - | 851.60 | 691.07 | 42.08 | 1.41 | 0.19 | 1.60 | 733.15 | 118.45 |

Source: Kenya Power & Lighting Company Limited

*Provisional

- Data not available

Fig. 9: Electricity Generation, Consumption and Power Losses

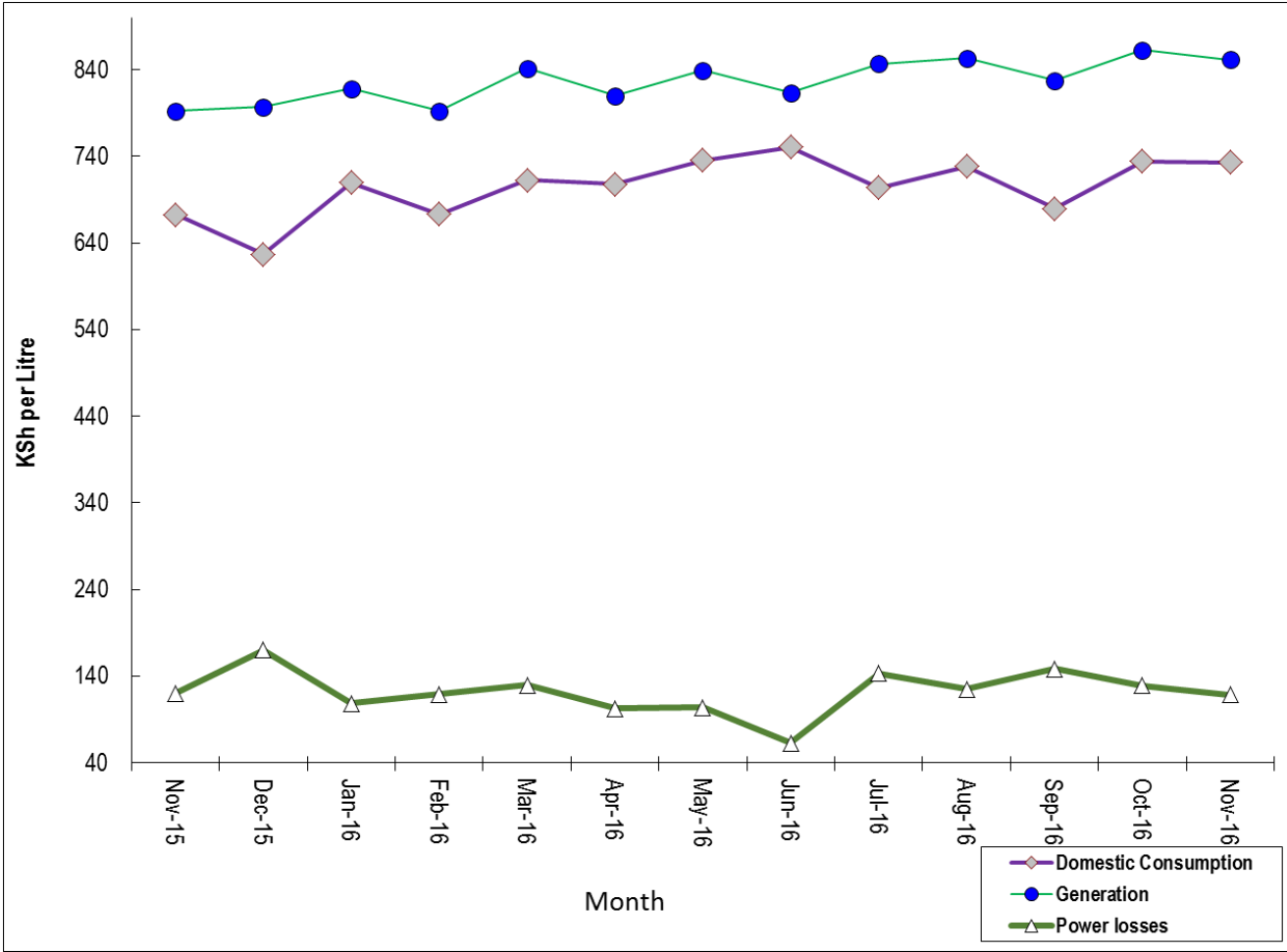


Table 15 (c): Consumption of Petroleum Fuels

| | '000 MT | | | | | | | | |
|-------------|------------------|----------|-----------|--------------|-----------------------|------------------|--------|-------------------|---------------|
| Period | Light Diesel Oil | Jet Fuel | Fuel Oils | Motor Spirit | Illuminating Kerosene | Heavy Diesel Oil | L.P.G. | Aviation Gasoline | Total Fuels |
| 2015 | | | | | | | | | |
| January | 160.60 | 53.03 | 26.53 | 87.53 | 29.32 | 0.01 | 4.55 | - | 361.58 |
| February | 158.44 | 49.50 | 28.92 | 82.98 | 24.33 | 0.32 | 4.59 | 0.15 | 349.24 |
| March | 182.48 | 54.29 | 36.77 | 89.89 | 31.09 | 0.07 | 4.66 | 0.14 | 399.39 |
| April | 165.50 | 52.25 | 36.65 | 84.22 | 27.33 | 0.03 | 4.59 | 0.12 | 370.69 |
| May | 156.07 | 52.43 | 21.10 | 82.61 | 31.45 | 0.05 | 4.66 | 0.13 | 348.50 |
| June | 169.99 | 51.84 | 45.42 | 86.36 | 33.01 | 0.16 | 4.94 | 0.13 | 391.86 |
| July | 163.40 | 55.60 | 26.58 | 90.41 | 31.43 | 0.03 | 5.93 | 0.15 | 373.51 |
| August | 163.09 | 55.22 | 24.84 | 88.21 | 28.25 | 0.03 | 6.00 | 0.13 | 365.78 |
| September | 167.58 | 52.19 | 27.34 | 88.11 | 31.35 | - | 5.93 | 0.14 | 372.64 |
| October | 166.95 | 56.32 | 27.80 | 86.65 | 34.73 | 0.07 | 10.38 | 2.42 | 385.32 |
| November | 153.11 | 45.60 | 26.73 | 83.31 | 31.02 | 0.03 | 0.53 | 9.83 | 350.16 |
| December | 166.94 | 33.67 | 29.07 | 100.13 | 34.83 | 0.07 | 5.89 | 0.14 | 370.75 |
| 2016 | | | | | | | | | |
| January | 163.57 | 56.39 | 25.59 | 90.60 | 34.98 | 0.17 | 13.96 | 0.16 | 385.42 |
| February | 185.35 | 54.19 | 24.41 | 98.15 | 37.08 | 0.34 | 14.77 | 0.18 | 414.47 |
| March | 199.79 | 55.62 | 31.52 | 106.05 | 38.70 | - | 15.35 | 0.16 | 447.19 |
| April | 186.65 | 54.95 | 32.69 | 98.98 | 36.27 | - | 16.04 | 0.12 | 425.69 |
| May | 188.82 | 55.67 | 14.35 | 99.97 | 35.69 | - | 16.69 | 0.17 | 411.37 |
| June | 168.96 | 53.36 | 31.09 | 90.80 | 29.96 | - | 15.83 | 0.14 | 390.15 |
| July | 162.96 | 55.00 | 27.59 | 87.37 | 32.70 | - | 16.13 | 0.20 | 381.96 |
| August | 188.57 | 56.18 | 38.36 | 105.57 | 35.12 | - | 16.66 | 0.21 | 440.68 |
| September | 216.90 | 71.59 | 36.04 | 139.14 | 30.93 | 0.13 | 16.29 | 0.19 | 511.22 |
| October | 220.02 | 33.68 | 17.99 | 168.81 | 21.94 | 0.13 | 13.08 | 2.98 | 478.63 |

Source: Ministry of Energy and Petroleum

Table 15 (d): Average Retail Prices for Selected Fuel Products within Nairobi

| KSh per litre | | | |
|---------------|------------------------|---------------------------|-----------------------|
| Period | Motor Gasoline Premium | Light Diesel Oil (Gasoil) | Illuminating Kerosene |
| 2015 | | | |
| January | 92.88 | 83.35 | 65.59 |
| February | 84.71 | 75.52 | 52.40 |
| March | 89.46 | 76.20 | 55.75 |
| April | 89.35 | 77.48 | 57.21 |
| May | 92.89 | 79.34 | 59.24 |
| June | 97.28 | 83.31 | 61.78 |
| July | 98.59 | 84.56 | 62.74 |
| August | 102.65 | 83.35 | 57.98 |
| September | 102.65 | 79.99 | 52.55 |
| October | 93.29 | 82.43 | 56.04 |
| November | 90.46 | 79.66 | 54.81 |
| December | 90.06 | 78.51 | 53.27 |
| 2016 | | | |
| January | 88.64 | 76.7 | 46.13 |
| February | 86.5 | 67.88 | 39.62 |
| March | 85.58 | 65.7 | 42.15 |
| April | 80.71 | 66.23 | 43.96 |
| May | 84.25 | 70.37 | 46.98 |
| June | 86.17 | 73.71 | 55.2 |
| July | 92.93 | 83.24 | 61.45 |
| August | 95.13 | 84.51 | 62.48 |
| September | 91.39 | 82.46 | 59.1 |
| October | 91.56 | 82.12 | 58.71 |
| November | 94.94 | 82.17 | 62.16 |

Source: Energy Regulatory Commission

Table 15 (e): Average Retail Prices for Selected Fuels in Kenya

| Period | Motor Gasoline Premium (KSh per Litre) | Light Diesel Oil (KSh per Litre) | Illuminating Kerosene (KSh per Litre) | L.P.G (KSh per 13 Kg) | Charcoal (KSh per 4 Kg Tin) |
|-------------|--|----------------------------------|---------------------------------------|-----------------------|-----------------------------|
| 2015 | | | | | |
| February | 85.60 | 76.49 | 53.37 | 2,846.53 | 73.06 |
| March | 90.34 | 77.16 | 56.71 | 2,629.56 | 73.39 |
| April | 90.22 | 78.44 | 58.17 | 2,529.56 | 74.66 |
| May | 93.76 | 80.30 | 60.20 | 2,424.69 | 75.54 |
| June | 98.14 | 84.26 | 62.73 | 2,387.04 | 76.35 |
| July | 99.45 | 85.51 | 63.69 | 2,376.22 | 77.53 |
| August | 103.50 | 84.30 | 58.94 | 2,374.92 | 77.56 |
| September | 103.49 | 80.94 | 53.52 | 2,393.85 | 77.50 |
| October | 94.16 | 83.38 | 57.00 | 2,401.31 | 77.65 |
| November | 91.34 | 80.61 | 55.77 | 2,386.66 | 78.13 |
| December | 90.94 | 79.47 | 54.23 | 2,369.46 | 78.42 |
| 2016 | | | | | |
| January | 89.52 | 77.66 | 47.11 | 2,343.86 | 78.82 |
| February | 87.38 | 68.85 | 40.60 | 2,318.03 | 78.64 |
| March | 86.46 | 66.68 | 43.13 | 2,277.48 | 78.07 |
| April | 81.61 | 67.21 | 44.94 | 2,268.37 | 78.82 |
| May | 85.14 | 71.34 | 47.96 | 2,252.86 | 78.82 |
| June | 87.07 | 74.69 | 59.10 | 2,231.38 | 78.71 |
| July | 93.81 | 84.20 | 62.42 | 2,097.51 | 78.71 |
| August | 96.01 | 85.47 | 63.45 | 2,078.76 | 79.00 |
| September | 92.28 | 83.42 | 60.08 | 2,029.12 | 79.39 |
| October | 92.44 | 83.08 | 59.68 | 1,989.54 | 79.17 |
| November | 95.82 | 83.14 | 63.13 | 1,987.69 | 79.07 |

Fig. 10: Average Prices for Liquefied Petroleum Gas in Kenya ('000 KSh per 13 Kg cylinder)

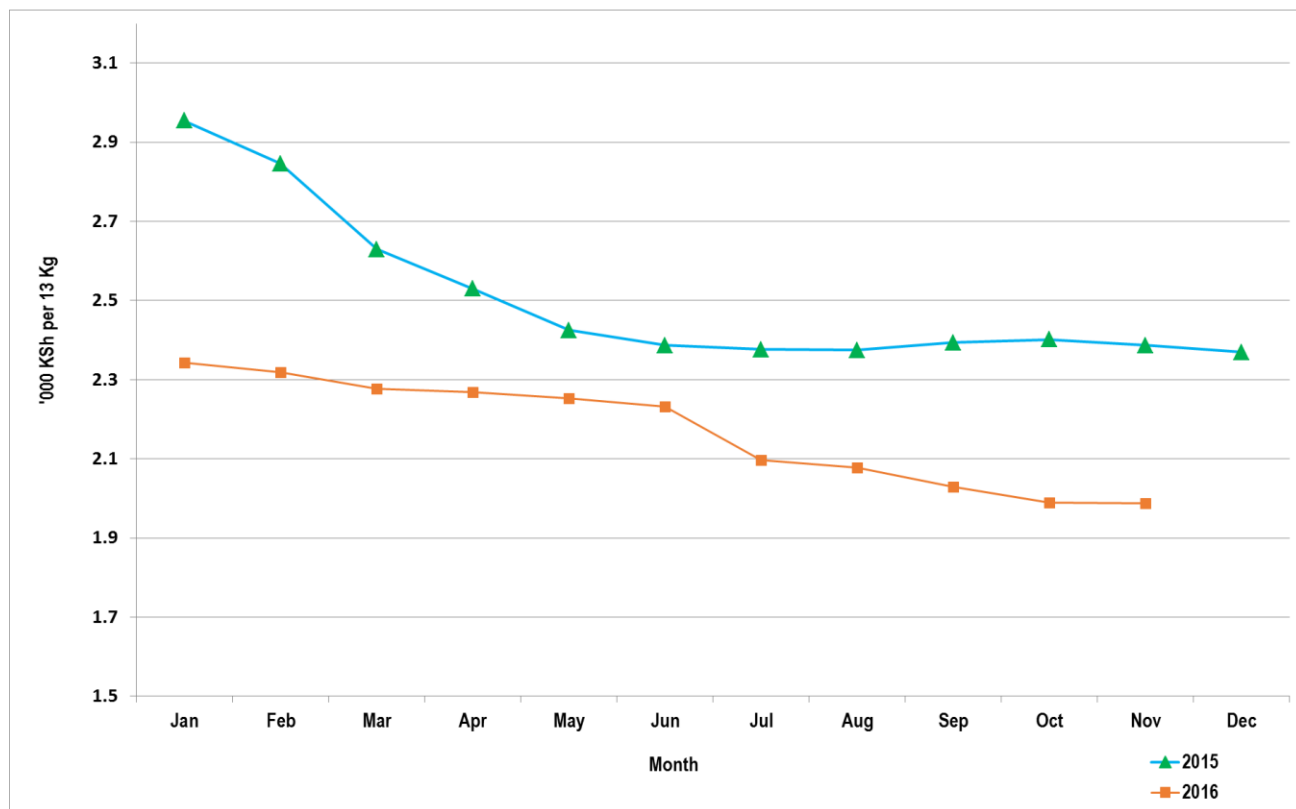


Table 15(f): Murban ADNOC Crude Oil Prices

| | US\$/ BBL | | | | | | |
|------------|-----------|--------|--------|--------|--------|-------|-------|
| Month/Year | 2010 | 2011 | 2012 | 2013 | 2014 | 2015 | 2016 |
| January | 77.50 | 95.55 | 114.20 | 112.05 | 109.75 | 46.40 | 29.95 |
| February | 74.20 | 103.60 | 120.45 | 115.40 | 109.95 | 56.55 | 33.00 |
| March | 78.30 | 112.55 | 127.00 | 109.95 | 108.30 | 56.10 | 38.20 |
| April | 84.80 | 120.70 | 121.20 | 105.65 | 107.95 | 60.55 | 42.00 |
| May | 77.85 | 113.60 | 110.60 | 103.65 | 109.15 | 65.75 | 47.35 |
| June | 74.80 | 112.15 | 97.35 | 103.00 | 111.65 | 63.70 | 49.05 |
| July | 73.00 | 113.95 | 101.75 | 106.85 | 109.50 | 57.70 | 44.60 |
| August | 74.60 | 109.05 | 111.65 | 111.70 | 104.25 | 48.85 | 48.85 |
| September | 75.90 | 110.90 | 115.40 | 114.50 | 97.95 | 46.60 | 45.50 |
| October | 81.50 | 108.95 | 113.20 | 112.45 | 87.35 | 47.30 | 51.35 |
| November | 85.65 | 114.35 | 112.10 | 112.20 | 77.00 | 43.55 | 46.15 |
| December | 91.85 | 111.80 | 110.75 | 113.85 | 60.65 | 37.25 | |

US\$/ BBL: US Dollar per Barrel

Price: Abu Dhabi Free On Board (FOB)

ADNOC: Abu Dhabi National Oil Corporation

Fig. 11: Trends for Different world Crude Oil Prices

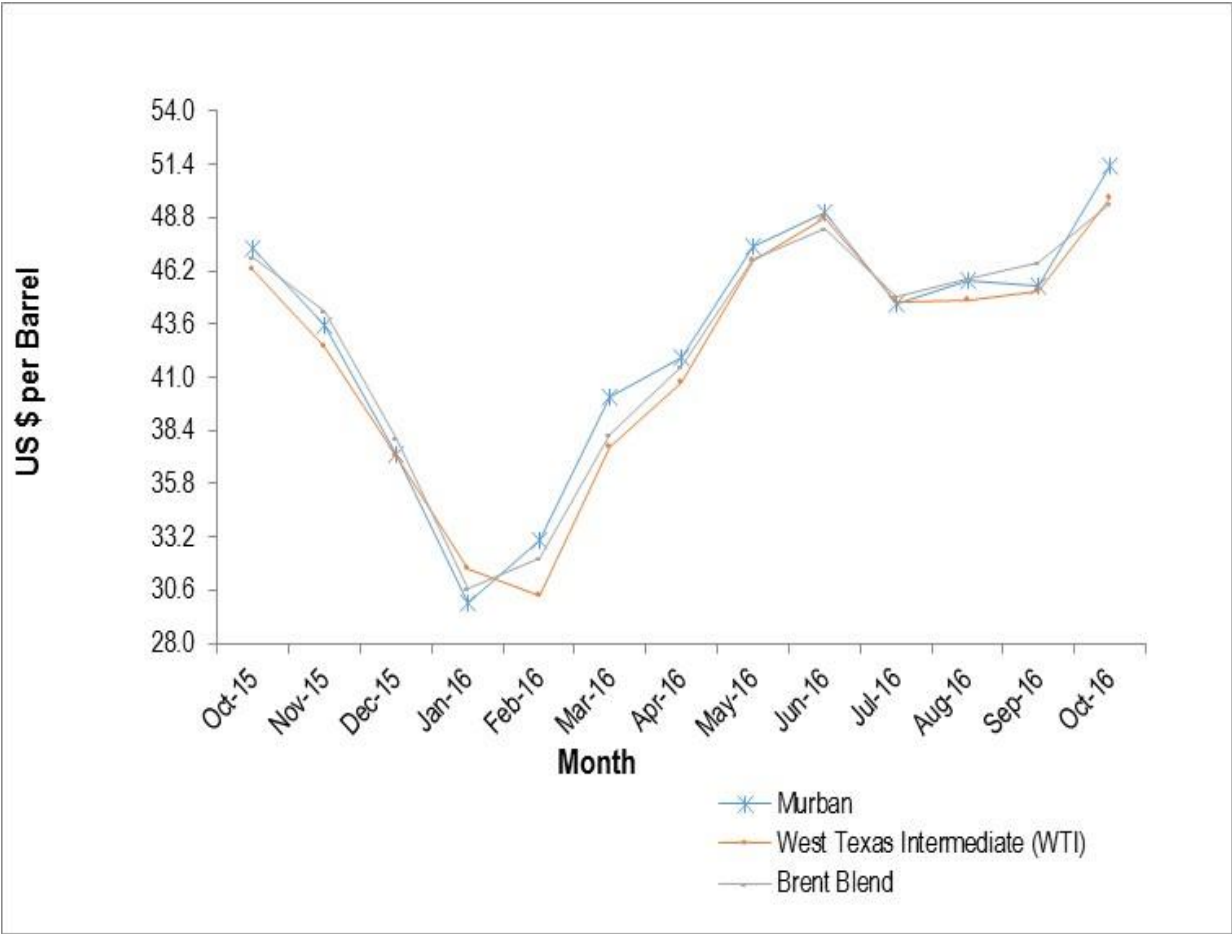


Table 16: Value of Building Plans Approved by Nairobi City County Planning Compliance & Enforcement Department

| Month | KSh Million | | | Index* | | |
|-------------|-------------|-----------------|-----------|-------------|-----------------|-----------|
| | Residential | Non Residential | Aggregate | Residential | Non Residential | Aggregate |
| 2015 | | | | | | |
| January | 8,829.20 | 3,883.70 | 12,712.90 | 113.10 | 48.10 | 160.30 |
| February | 10,154.00 | 6,003.10 | 16,157.10 | 130.10 | 74.40 | 203.70 |
| March | 10,758.00 | 5,706.50 | 16,464.50 | 137.80 | 70.70 | 207.60 |
| April | 11,358.00 | 5,986.50 | 17,344.50 | 145.50 | 74.20 | 218.70 |
| May | 11,618.00 | 7,006.50 | 18,624.50 | 148.80 | 86.80 | 234.90 |
| June | 12,403.50 | 8,017.80 | 20,421.30 | 158.90 | 99.32 | 257.50 |
| July | 11,579.50 | 10,036.60 | 21,616.10 | 148.40 | 124.33 | 272.60 |
| August | 13,402.20 | 8,479.70 | 21,881.90 | 171.70 | 105.03 | 276.90 |
| September | 13,724.50 | 9,812.80 | 23,537.30 | 175.80 | 121.60 | 296.80 |
| October | 14,005.60 | 10,007.90 | 24,013.50 | 179.40 | 124.00 | 302.80 |
| November | 15,004.40 | 10,458.90 | 25,463.30 | 192.20 | 129.60 | 321.10 |
| December | 14,116.50 | 9,777.00 | 23,893.40 | 180.80 | 121.10 | 301.30 |
| 2016 | | | | | | |
| January | 13,979.86 | 9,989.36 | 23,969.22 | 171.51 | 118.23 | 289.13 |
| February | 14,206.00 | 8,015.56 | 22,221.56 | 174.28 | 94.87 | 268.05 |
| March | 16,002.46 | 10,458.88 | 26,461.34 | 196.32 | 123.79 | 319.20 |
| April | 13,619.00 | 11,802.16 | 25,421.16 | 167.08 | 139.68 | 306.65 |
| May | 16,463.16 | 11,776.98 | 28,240.14 | 201.97 | 139.39 | 340.65 |
| June | 16,685.26 | 11,588.50 | 28,273.76 | 204.70 | 137.16 | 341.06 |
| July | 16,194.86 | 12,460.94 | 28,655.80 | 198.68 | 147.48 | 345.67 |
| August | 16,840.34 | 12,039.72 | 28,880.06 | 206.60 | 142.50 | 348.37 |
| September | 17,024.12 | 10,380.60 | 27,404.72 | 208.86 | 122.86 | 330.57 |
| October | 15,528.66 | 13,714.26 | 29,242.92 | 190.51 | 162.31 | 352.75 |

Source: Nairobi City County.

* Actual deflated by relevant construction cost indices (Dec1972 =100)

Table 17(a): Domestic Production of Sugar

| | Metric Tonnes | | | | | | | |
|--------------|----------------|----------------|----------------|----------------|----------------|----------------|----------------|--------|
| Month/Year | 2009 | 2010 | 2011 | 2012 | 2013 | 2014 | 2015 | 2016* |
| January | 53,968 | 48,100 | 55,974 | 53,852 | 49,046 | 64,298 | 63,227 | 64,499 |
| February | 46,115 | 42,982 | 52,069 | 49,480 | 50,036 | 60,044 | 57,917 | 59,863 |
| March | 53,687 | 45,388 | 53,842 | 52,342 | 43,647 | 63,365 | 63,389 | 65,708 |
| April | 46,164 | 43,801 | 52,061 | 44,914 | 39,151 | 47,279 | 46,280 | 48,802 |
| May | 46,002 | 34,465 | 49,130 | 40,410 | 36,529 | 44,094 | 44,081 | 45,156 |
| June | 47,410 | 37,828 | 38,818 | 45,111 | 49,512 | 42,866 | 46,098 | 53,797 |
| July | 33,078 | 33,495 | 25,884 | 41,607 | 61,802 | 55,912 | 47,957 | 56,948 |
| August | 36,827 | 41,911 | 26,060 | 37,058 | 58,687 | 50,140 | 54,089 | 52,232 |
| September | 42,586 | 45,595 | 22,815 | 32,503 | 50,303 | 47,915 | 61,069 | 44,686 |
| October | 43,750 | 43,669 | 28,990 | 30,123 | 52,751 | 42,197 | 56,360 | |
| November | 50,115 | 50,822 | 32,689 | 31,886 | 54,752 | 34,455 | 43,401 | |
| December | 48,297 | 55,414 | 36,729 | 34,651 | 53,994 | 64,298 | 48,089 | |
| Total | 547,999 | 523,470 | 475,061 | 493,937 | 600,210 | 592,668 | 631,957 | |

Source: Sugar Directorate

*Provisional

Table 17(b): Production of Soft Drinks

| '000 Litres | | | | | | | | |
|--------------|----------------|----------------|----------------|----------------|----------------|----------------|----------------|--------|
| Month | 2009 | 2010 | 2011 | 2012 | 2013 | 2014 | 2015 | 2016* |
| January | 31,153 | 29,405 | 34,446 | 34,317 | 32,809 | 39,007 | 45,282 | 37,597 |
| February | 26,891 | 31,178 | 32,457 | 32,009 | 36,068 | 39,146 | 40,021 | 37,778 |
| March | 34,847 | 33,984 | 36,156 | 37,363 | 42,552 | 40,320 | 50,388 | 43,454 |
| April | 32,585 | 29,352 | 31,162 | 29,331 | 27,345 | 37,885 | 39,699 | 37,244 |
| May | 26,934 | 29,445 | 26,622 | 24,359 | 27,581 | 40,430 | 40,185 | 34,935 |
| June | 28,314 | 29,588 | 28,910 | 27,391 | 30,919 | 28,706 | 35,381 | 38,801 |
| July | 25,279 | 29,332 | 28,478 | 22,073 | 28,464 | 33,790 | 38,720 | 35,769 |
| August | 26,829 | 28,525 | 28,580 | 24,458 | 27,697 | 33,404 | 34,994 | 39,316 |
| September | 31,594 | 29,593 | 29,674 | 31,113 | 36,026 | 35,899 | 44,450 | |
| October | 29,922 | 30,435 | 28,540 | 32,540 | 34,810 | 41,601 | 42,226 | |
| November | 29,664 | 29,333 | 27,366 | 31,497 | 36,272 | 40,134 | 39,297 | |
| December | 37,261 | 31,163 | 38,962 | 33,067 | 43,438 | 49,142 | 44,467 | |
| Total | 361,273 | 361,333 | 371,352 | 359,518 | 403,981 | 459,464 | 495,110 | |

*Provisional

Table 17(c): Production of Assembled Vehicles

| | Numbers | | | | | | |
|--------------|--------------|--------------|--------------|--------------|--------------|---------------|-------|
| Month/Year | 2010 | 2011 | 2012 | 2013 | 2014 | 2015 | 2016* |
| January | 299 | 290 | 387 | 435 | 511 | 601 | 363 |
| February | 521 | 413 | 588 | 536 | 792 | 949 | 587 |
| March | 510 | 462 | 303 | 496 | 737 | 922 | 650 |
| April | 438 | 449 | 594 | 584 | 798 | 813 | 658 |
| May | 521 | 554 | 654 | 560 | 832 | 827 | 642 |
| June | 550 | 550 | 588 | 609 | 856 | 745 | 482 |
| July | 509 | 524 | 570 | 617 | 809 | 757 | 491 |
| August | 460 | 553 | 588 | 578 | 828 | 931 | 605 |
| September | 461 | 651 | 597 | 590 | 886 | 1,029 | 623 |
| October | 460 | 660 | 585 | 652 | 887 | 1,139 | |
| November | 490 | 594 | 420 | 733 | 724 | 972 | |
| December | 502 | 349 | 344 | 558 | 586 | 496 | |
| Total | 5,721 | 6,049 | 6,218 | 6,948 | 9,246 | 10,181 | |

Table 17(d): Production of Galvanized Sheets

| | Metric Tonnes | | | | | | |
|--------------|----------------|----------------|----------------|----------------|----------------|----------------|--------|
| Month/Year | 2010 | 2011 | 2012 | 2013 | 2014 | 2015 | 2016* |
| January | 14,254 | 22,094 | 22,940 | 25,528 | 22,090 | 21,304 | 21,330 |
| February | 13,700 | 22,386 | 19,655 | 22,874 | 18,573 | 20,078 | 20,102 |
| March | 20,095 | 22,928 | 21,507 | 26,296 | 21,267 | 22,797 | 20,120 |
| April | 18,929 | 20,957 | 20,892 | 26,010 | 25,989 | 20,674 | 23,109 |
| May | 18,842 | 24,744 | 22,197 | 23,866 | 27,433 | 23,132 | 21,980 |
| June | 16,006 | 24,677 | 17,180 | 26,147 | 24,465 | 20,358 | 20,180 |
| July | 16,790 | 24,906 | 21,411 | 25,007 | 21,779 | 18,415 | 18,320 |
| August | 16,457 | 24,659 | 23,040 | 27,398 | 25,753 | 20,871 | 24,190 |
| September | 16,299 | 17,988 | 23,268 | 25,051 | 26,126 | 20,581 | |
| October | 18,488 | 16,619 | 20,473 | 27,588 | 26,732 | 26,024 | |
| November | 16,219 | 22,104 | 21,969 | 26,628 | 25,763 | 25,764 | |
| December | 15,331 | 24,033 | 21,283 | 23,706 | 18,539 | 16,938 | |
| Total | 201,410 | 268,096 | 255,815 | 306,099 | 284,509 | 256,938 | |

*Provisional

Table 17(e): Cement Production and Consumption

| Metric Tonnes | | | | | | |
|---------------|------------------|------------------|------------------|------------------|------------|-------------|
| Month/Year | 2014 | | 2015 | | 2016* | |
| | Production | Consumption | Production | Consumption | Production | Consumption |
| January | 454,960 | 387,809 | 511,298 | 459,227 | 532,729 | 471,457 |
| February | 442,636 | 354,576 | 465,471 | 417,591 | 533,773 | 508,874 |
| March | 478,416 | 420,345 | 550,556 | 483,218 | 540,792 | 492,764 |
| April | 468,022 | 433,787 | 537,452 | 480,801 | 535,147 | 505,012 |
| May | 464,695 | 458,219 | 516,513 | 472,675 | 552,199 | 512,471 |
| June | 464,929 | 421,855 | 516,185 | 465,828 | 511,700 | 478,452 |
| July | 503,428 | 422,394 | 570,904 | 451,461 | 540,192 | 509,895 |
| August | 492,801 | 440,336 | 553,929 | 478,011 | 552,559 | 520,713 |
| September | 499,479 | 441,527 | 561,235 | 518,435 | 518,020 | 494,165 |
| October | 553,186 | 483,033 | 557,589 | 530,913 | 517,805 | 497,014 |
| November | 545,041 | 487,396 | 510,747 | 480,641 | | |
| December | 492,944 | 445,404 | 486,306 | 455,345 | | |
| TOTAL | 5,860,537 | 5,196,681 | 6,338,184 | 5,694,146 | | |

*Provisional

Table 17(f): Milk Intakes in the Formal Sector

| | Million Litres | | | | | |
|--------------|----------------|--------------|--------------|--------------|--------------|--------------|
| Month/Year | 2011 | 2012 | 2013 | 2014 | 2015 | 2016* |
| January | 47.1 | 45.5 | 49.3 | 54.0 | 57.2 | 56.8 |
| February | 40.8 | 32.9 | 42.5 | 46.6 | 37.8 | 52.8 |
| March | 38.8 | 28.9 | 40.3 | 49.3 | 35.8 | 48.4 |
| April | 41.8 | 26.0 | 44.4 | 45.0 | 35.6 | 54.4 |
| May | 45.6 | 37.3 | 50.6 | 43.6 | 53.0 | 49.5 |
| June | 45.7 | 46.2 | 44.5 | 44.5 | 51.0 | 66.4 |
| July | 49.5 | 43.5 | 43.5 | 40.5 | 50.9 | 58.5 |
| August | 46.4 | 45.5 | 37.9 | 41.8 | 51.6 | 56.1 |
| September | 49.1 | 45.2 | 38.8 | 41.7 | 55.7 | 52.3 |
| October | 50.3 | 47.8 | 38.9 | 43.5 | 55.4 | 53.4 |
| November | 46.4 | 48.6 | 45.3 | 44.3 | 68.3 | |
| December | 47.7 | 47.9 | 47.0 | 46.6 | 58.9 | |
| Total | 549.0 | 495.2 | 523.0 | 541.1 | 611.1 | 548.5 |

Source: Kenya Dairy Board

* Provisional

Fig. 12: Milk Intake in the Formal Sector

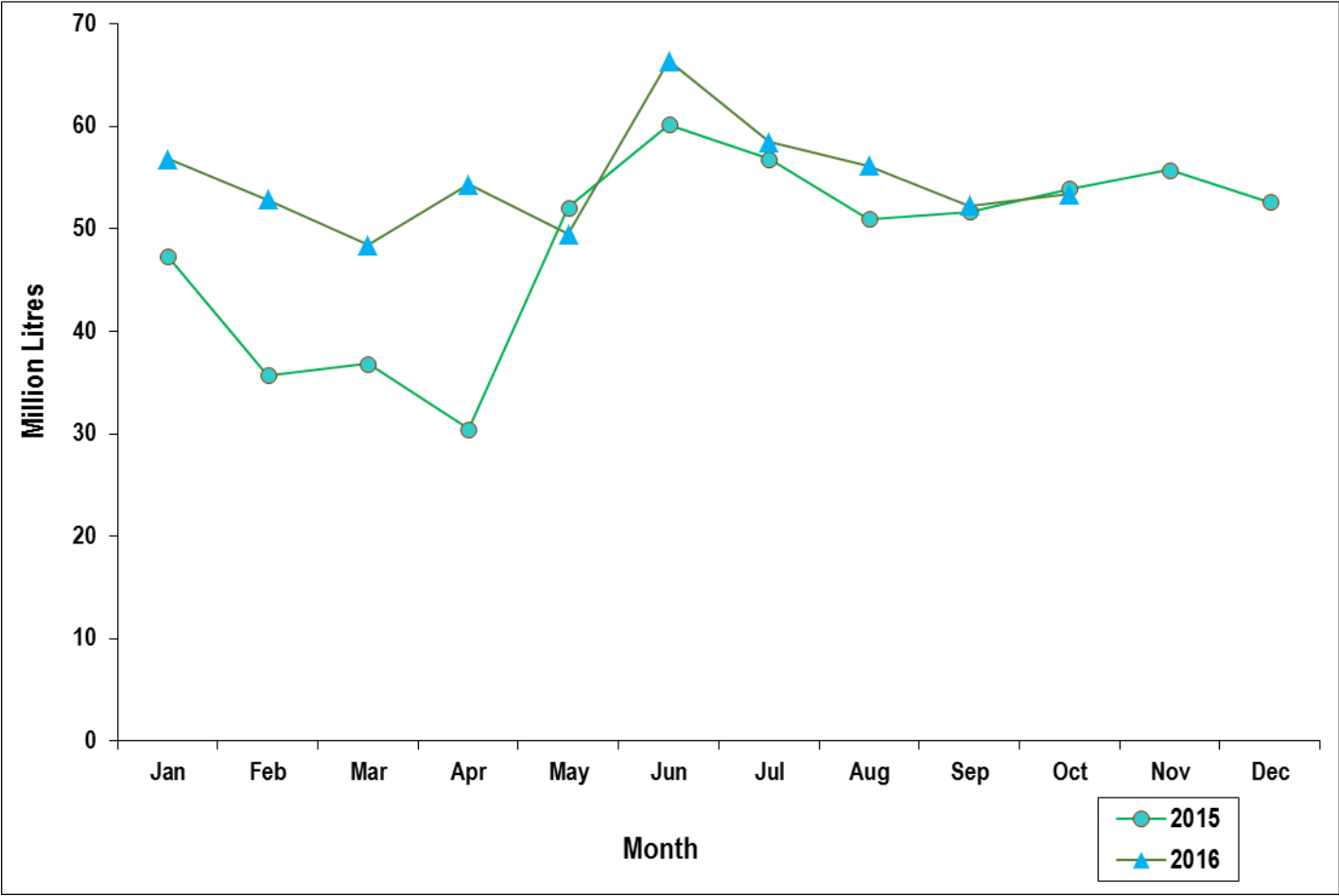


Table 18: Visitor Arrivals through J.K.I.A and M.I.A

| Month | AIRPORT | | Numbers* |
|-------------|---------|--------|----------|
| | JKIA | MIA | Total |
| 2015 | | | |
| January | 40,846 | 10,107 | 50,953 |
| February | 45,171 | 7,882 | 53,053 |
| March | 66,121 | 6,958 | 73,079 |
| April | 49,933 | 4,020 | 53,953 |
| May | 50,764 | 2,511 | 53,275 |
| June | 59,867 | 3,279 | 63,146 |
| July | 72,515 | 5,728 | 78,243 |
| August | 63,332 | 7,546 | 70,878 |
| September | 54,162 | 5,114 | 59,276 |
| October | 66,441 | 6,049 | 72,490 |
| November | 53,622 | 7,718 | 61,340 |
| December | 50,015 | 9,070 | 59,085 |
| 2016 | | | |
| January | 65,431 | 9,407 | 74,838 |
| February | 62,856 | 9,983 | 72,839 |
| March | 49,996 | 8,551 | 58,547 |
| April | 51,311 | 3,869 | 55,180 |
| May | 59,294 | 3,578 | 62,872 |
| June | 64,451 | 4,182 | 68,633 |
| July | 81,729 | 7,832 | 89,561 |
| August | 87,141 | 9,817 | 96,958 |
| September | 67,249 | 8,381 | 75,630 |

Source: Kenya Tourism Board

* Visitors arrivals exclude Kenyans

Fig. 13: Visitor Arrivals through J.K.I.A and M.I.A

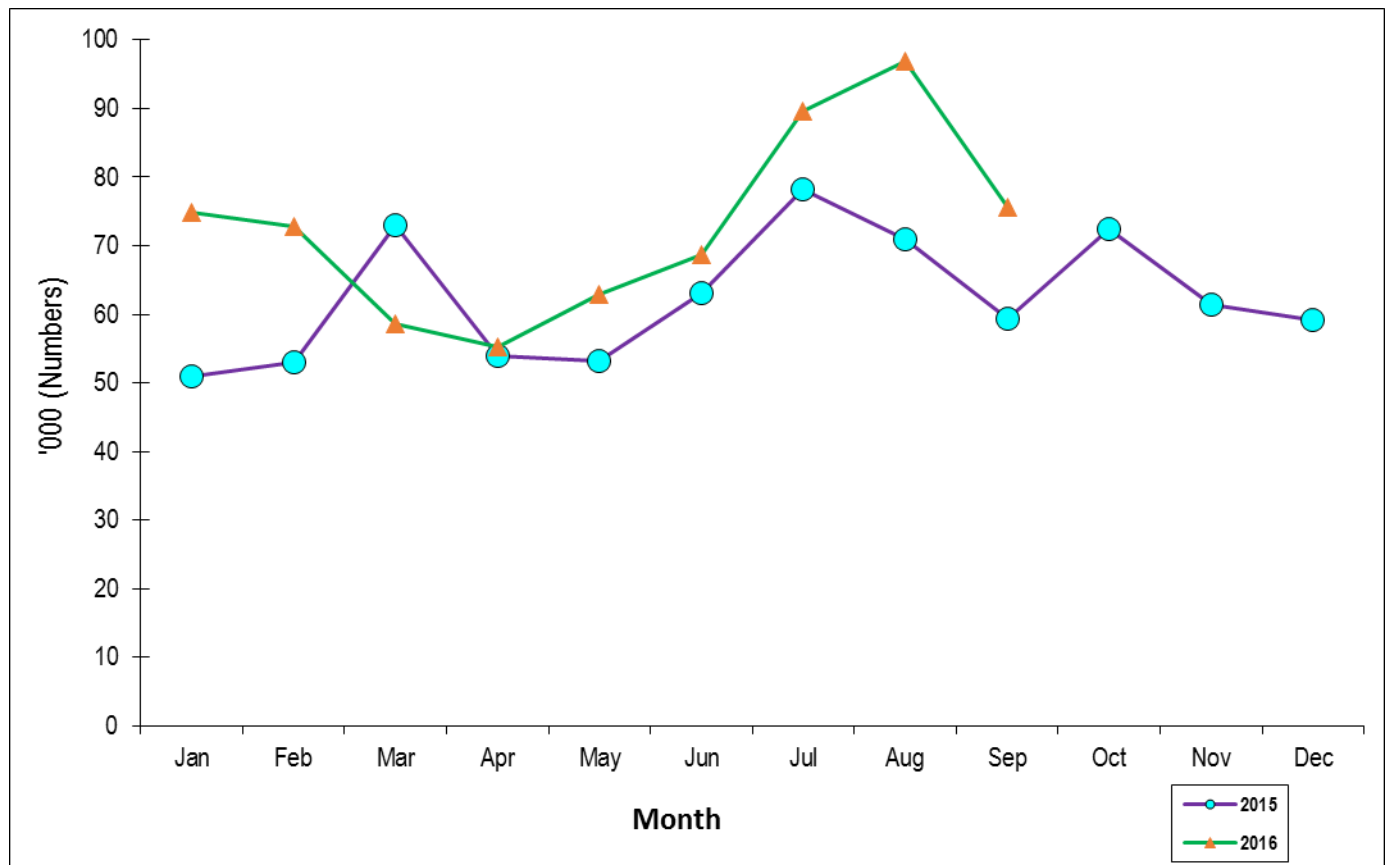


Table 19a): Jomo Kenyatta international airport-Embarked Passengers by Port of Destination

| PORTSMONTH | 2015 | | | | | | | | | | 2016 | | | | | | | | | |
|--------------------------|----------------|----------------|----------------|----------------|----------------|----------------|----------------|----------------|----------------|----------------|----------------|----------------|----------------|----------------|----------------|----------------|----------------|----------------|----------------|----------------|
| | March | April | May | Jun | July | Aug | Sep | Oct | Nov | Dec | Jan | Feb | Mar | April | May | June | July | Aug | Sep | Oct |
| ADDIS ABABA (ADD) | 2,011 | 2,019 | 2,008 | 2,012 | 2,006 | 2,018 | 2,014 | 2,013 | 2,009 | 2,019 | 2,011 | 2,017 | 2,013 | 2,016 | 2,008 | 2,012 | 2,007 | 2,014 | 2,010 | 2,006 |
| CAIRO (CA) | 2,797 | 2,699 | 2,608 | 2,688 | 2,611 | 2,598 | 2,702 | 2,587 | 2,595 | 2,649 | 2,610 | 2,652 | 2,617 | 2,641 | 2,623 | 2,629 | 2,624 | 2,630 | 2,624 | 2,626 |
| DAR ES SALAAM (DAR) | 8,211 | 8,123 | 8,133 | 8,209 | 8,179 | 8,142 | 8,152 | 8,199 | 8,144 | 8,201 | 8,188 | 8,198 | 8,156 | 8,187 | 8,184 | 8,159 | 8,177 | 8,165 | 8,175 | 8,174 |
| ENTERBE (EBB) | 11,461 | 10,838 | 10,819 | 10,901 | 11,011 | 10,823 | 10,922 | 10,925 | 10,925 | 10,916 | 10,923 | 10,928 | 10,926 | 10,919 | 10,927 | 10,916 | 10,924 | 10,920 | 10,926 | 10,923 |
| HARARE (HRE) | 2,639 | 2,651 | 2,633 | 2,644 | 2,701 | 2,672 | 2,692 | 2,659 | 2,692 | 2,688 | 2,694 | 2,686 | 2,695 | 2,688 | 2,697 | 2,693 | 2,699 | 2,695 | 2,698 | 2,697 |
| JOHANNESBURG (JNB) | 10,968 | 12,213 | 12,222 | 12,219 | 12,160 | 12,082 | 11,995 | 12,142 | 11,883 | 12,082 | 11,956 | 12,096 | 11,954 | 11,815 | 11,947 | 12,086 | 11,957 | 11,838 | 11,955 | 11,950 |
| TOTAL AFRICA | 38,087 | 38,443 | 38,423 | 38,573 | 38,658 | 38,335 | 38,477 | 38,525 | 38,248 | 38,552 | 38,382 | 38,577 | 38,381 | 38,286 | 38,387 | 38,495 | 38,388 | 38,262 | 38,388 | 38,376 |
| BOMBAY (BOM) | 9,182 | 10,100 | 10,139 | 10,151 | 9,997 | 10,094 | 10,123 | 10,045 | 10,076 | 10,059 | 10,070 | 10,079 | 10,065 | 10,075 | 10,062 | 10,073 | 10,061 | 10,072 | 10,064 | 10,069 |
| DUBAI (DXB) | 22,371 | 19,205 | 19,254 | 19,314 | 19,316 | 19,401 | 19,200 | 19,335 | 19,248 | 19,297 | 19,266 | 19,295 | 19,263 | 19,288 | 19,267 | 19,287 | 19,289 | 19,288 | 19,271 | 19,286 |
| JEDDAH (JED) | 2,017 | 1,662 | 1,676 | 1,701 | 1,692 | 1,672 | 1,914 | 1,803 | 1,655 | 1,607 | 1,646 | 1,616 | 1,644 | 1,624 | 1,641 | 1,621 | 1,638 | 1,626 | 1,630 | 1,632 |
| MUSCAT (MCT) | - | - | - | - | - | - | - | - | - | - | - | - | - | - | - | - | - | - | - | - |
| TOTAL ASIA | 33,570 | 30,967 | 31,069 | 31,166 | 31,085 | 31,367 | 31,237 | 31,183 | 31,179 | 31,162 | 31,182 | 31,190 | 31,172 | 31,187 | 31,170 | 31,181 | 31,168 | 31,186 | 31,165 | 31,187 |
| AMSTERDAM (AMS) | 14,840 | 16,090 | 16,122 | 16,111 | 16,072 | 16,120 | 16,152 | 16,149 | 16,258 | 16,161 | 16,250 | 16,163 | 16,233 | 16,165 | 16,248 | 16,174 | 16,244 | 16,168 | 16,247 | 16,180 |
| BRUSSELS (BRU) | 1,754 | 1,511 | 1,505 | 1,510 | 1,522 | 1,491 | 1,520 | 1,515 | 1,523 | 1,519 | 1,522 | 1,524 | 1,520 | 1,526 | 1,523 | 1,525 | 1,520 | 1,527 | 1,522 | 1,525 |
| LONDON (LON) | 15,882 | 15,494 | 15,467 | 15,471 | 15,518 | 15,548 | 15,527 | 15,549 | 15,532 | 15,546 | 15,534 | 15,548 | 15,536 | 15,549 | 15,539 | 15,551 | 15,541 | 15,550 | 15,542 | 15,547 |
| PARIS(CO) (PAR) | 2,890 | 2,711 | 2,693 | 2,706 | 2,735 | 2,723 | 2,809 | 2,741 | 2,809 | 2,756 | 2,798 | 2,748 | 2,777 | 2,753 | 2,773 | 2,761 | 2,779 | 2,764 | 2,775 | 2,767 |
| ROME (ROM) | - | - | - | - | - | - | - | - | - | - | - | - | - | - | - | - | - | - | - | - |
| ZURICH (ZRH) | 3,111 | 3,106 | 3,135 | 3,146 | 3,103 | 3,091 | 3,129 | 3,104 | 3,112 | 3,117 | 3,115 | 3,121 | 3,114 | 3,127 | 3,120 | 3,117 | 3,111 | 3,121 | 3,114 | 3,119 |
| TOTAL (EUROPE) | 38,377 | 38,912 | 38,922 | 38,944 | 38,950 | 38,973 | 38,137 | 38,858 | 38,234 | 38,893 | 38,219 | 38,104 | 38,180 | 38,120 | 38,203 | 38,128 | 38,195 | 38,130 | 38,200 | 38,138 |
| OTHERS (TOTAL) ** | 72,773 | 71,332 | 72,459 | 73,692 | 72,999 | 71,419 | 72,399 | 71,564 | 72,578 | 71,899 | 71,652 | 71,841 | 71,683 | 71,673 | 71,588 | 71,644 | 71,659 | 71,429 | 71,642 | 71,589 |
| GRAND TOTAL | 182,807 | 179,654 | 180,873 | 180,375 | 180,912 | 180,094 | 181,249 | 180,330 | 181,239 | 180,649 | 180,615 | 180,712 | 180,396 | 180,246 | 180,348 | 180,448 | 180,410 | 180,007 | 180,395 | 180,280 |

Table (19b): Jomo Kenyatta international airport- Landed Passengers by Port of Origin

| PORTS/MONTH | 2015 | | | | | | | | | | | | 2016 | | | | | | | | | |
|--------------------------|----------------|----------------|----------------|----------------|----------------|----------------|----------------|----------------|----------------|----------------|----------------|----------------|----------------|----------------|----------------|----------------|----------------|----------------|----------------|----------------|----------------|----------------|
| | Jan | Feb | March | April | May | Jun | July | Aug | Sep | Oct | Nov | Dec | Jan | Feb | Mar | April | May | June | July | Aug | Sep | Oct |
| ADDIS ABABA (ADD) | 2,103 | 2,084 | 1,999 | 2,032 | 2,029 | 2,017 | 2,027 | 2,049 | 2,059 | 2,030 | 2,048 | 2,022 | 2,001 | 2,025 | 2,006 | 2,004 | 2,013 | 2,007 | 2,012 | 2,014 | 2,008 | 2,018 |
| CAIRO (CAI) | 2,689 | 2,602 | 2,616 | 2,769 | 2,778 | 2,771 | 2,800 | 2,899 | 2,749 | 2,788 | 2,749 | 2,741 | 2,751 | 2,744 | 2,750 | 2,746 | 2,751 | 2,749 | 2,752 | 2,750 | 2,755 | 2,753 |
| DARES SALAAM (DAR) | 8,121 | 8,082 | 8,111 | 8,200 | 8,196 | 8,184 | 8,193 | 8,207 | 8,119 | 8,189 | 8,176 | 8,159 | 8,173 | 8,187 | 8,165 | 8,182 | 8,163 | 8,174 | 8,166 | 8,171 | 8,165 | 8,170 |
| ENTEBBE (EBB) | 10,803 | 10,742 | 10,786 | 11,464 | 11,449 | 11,471 | 11,501 | 11,498 | 11,510 | 11,498 | 11,483 | 11,494 | 11,502 | 11,483 | 11,487 | 11,494 | 11,489 | 11,496 | 11,491 | 11,488 | 11,492 | 11,488 |
| HARARE (HRE) | 2,682 | 2,662 | 2,723 | 2,647 | 2,662 | 2,599 | 2,639 | 2,628 | 2,620 | 2,628 | 2,615 | 2,624 | 2,630 | 2,622 | 2,627 | 2,623 | 2,631 | 2,628 | 2,633 | 2,630 | 2,634 | 2,632 |
| JOHANNESBURG (JNB) | 12,212 | 12,203 | 12,219 | 10,892 | 10,862 | 10,901 | 10,865 | 10,884 | 10,870 | 10,884 | 10,879 | 10,888 | 10,881 | 10,887 | 10,883 | 10,875 | 10,882 | 10,876 | 10,884 | 10,878 | 10,883 | 10,879 |
| TOTAL AFRICA | 38,598 | 38,375 | 38,514 | 38,004 | 37,976 | 37,943 | 38,025 | 37,965 | 37,927 | 37,997 | 37,950 | 37,925 | 37,938 | 37,958 | 37,918 | 37,924 | 37,929 | 37,930 | 37,938 | 37,931 | 37,937 | 37,936 |
| BOMBAY (BOM) | 10,142 | 10,073 | 10,102 | 9,198 | 9,220 | 9,319 | 9,324 | 9,169 | 9,196 | 9,298 | 9,220 | 9,247 | 9,223 | 9,243 | 9,221 | 9,240 | 9,227 | 9,245 | 9,231 | 9,243 | 9,235 | 9,247 |
| DUBAI (DXB) | 19,307 | 19,196 | 19,278 | 22,397 | 22,386 | 19,234 | 20,876 | 22,189 | 20,998 | 20,997 | 22,001 | 21,172 | 21,972 | 21,250 | 21,999 | 21,967 | 21,996 | 21,962 | 21,991 | 21,969 | 21,990 | 21,974 |
| JEDDAH (JED) | 1,547 | 1,625 | 1,681 | 2,016 | 2,028 | 2,083 | 1,997 | 2,019 | 2,011 | 2,036 | 2,023 | 2,032 | 2,038 | 2,030 | 2,022 | 2,029 | 2,035 | 2,031 | 2,033 | 2,034 | 2,030 | 2,032 |
| MUSCAT (MCT) | - | - | - | - | - | - | - | - | - | - | - | - | - | - | - | - | - | - | - | - | - | - |
| TOTAL ASIA | 38,996 | 38,884 | 31,081 | 33,811 | 33,634 | 30,636 | 32,197 | 33,377 | 32,207 | 32,331 | 33,244 | 32,451 | 33,233 | 32,523 | 33,242 | 33,236 | 33,258 | 33,238 | 33,255 | 33,246 | 33,275 | 33,253 |
| AMSTERDAM (AMS) | 15,977 | 16,066 | 16,130 | 14,802 | 14,877 | 14,900 | 14,871 | 14,799 | 14,827 | 14,858 | 14,841 | 14,852 | 14,868 | 14,856 | 14,869 | 14,857 | 14,866 | 14,854 | 14,870 | 14,858 | 14,874 | 14,860 |
| BRUSSELS (BRU) | 1,479 | 1,505 | 1,520 | 1,763 | 1,757 | 1,769 | 1,695 | 1,722 | 1,711 | 1,737 | 1,720 | 1,741 | 1,722 | 1,738 | 1,756 | 1,743 | 1,753 | 1,741 | 1,750 | 1,748 | 1,758 | 1,751 |
| LONDON (LON) | 15,465 | 15,416 | 15,513 | 15,882 | 16,031 | 15,997 | 16,039 | 16,018 | 16,011 | 16,036 | 16,015 | 16,032 | 16,046 | 16,034 | 16,055 | 16,036 | 16,047 | 16,036 | 16,050 | 16,034 | 16,049 | 16,038 |
| PARIS (CDG) (PAR) | 2,723 | 2,761 | 2,672 | 3,019 | 3,052 | 3,043 | 2,998 | 3,007 | 3,012 | 3,007 | 3,015 | 3,021 | 3,025 | 3,012 | 3,019 | 3,030 | 3,021 | 3,028 | 3,023 | 3,029 | 3,025 | 3,027 |
| ROME (ROM) | - | - | - | - | - | - | - | - | - | - | - | - | - | - | - | - | - | - | - | - | - | - |
| ZURICH (ZRH) | 3,370 | 3,365 | 3,047 | 3,089 | 3,108 | 3,131 | 3,090 | 3,117 | 3,107 | 3,101 | 3,116 | 3,128 | 3,119 | 3,129 | 3,122 | 3,115 | 3,123 | 3,118 | 3,125 | 3,116 | 3,121 | 3,118 |
| TOTAL EUROPE | 38,014 | 38,133 | 38,882 | 38,615 | 38,825 | 38,840 | 38,693 | 38,663 | 38,668 | 38,739 | 38,707 | 38,778 | 38,780 | 38,769 | 38,821 | 38,781 | 38,810 | 38,777 | 38,818 | 38,785 | 38,827 | 38,792 |
| OTHERS (TOTAL) ** | 72,716 | 72,489 | 73,196 | 71,514 | 71,401 | 71,620 | 71,015 | 69,821 | 71,307 | 70,987 | 70,239 | 70,967 | 70,892 | 70,629 | 70,358 | 70,000 | 69,602 | 70,000 | 69,747 | 69,589 | 69,171 | 69,536 |
| GRAND TOTAL | 181,316 | 180,901 | 181,653 | 181,744 | 181,836 | 179,039 | 179,930 | 179,826 | 180,169 | 180,654 | 180,140 | 180,121 | 180,843 | 179,879 | 180,339 | 179,942 | 179,599 | 179,179 | 179,758 | 179,551 | 179,210 | 179,517 |

** Port of Origin not listed

Table 19 (c): New Vehicle Registration

| Type/Month | 2014 | | | | | | | | | | | 2015 | | | | | | | | | | | 2016* | | | | | | | | | | | | | |
|---------------------|----------------|---------------|---------------|---------------|---------------|---------------|---------------|---------------|---------------|---------------|-----|------|----------------|---------------|---------------|---------------|---------------|---------------|---------------|---------------|---------------|---------------|-------|-------|-----|-----|-----|-----|-----|------|------|--------|-----|--|--|--|
| | Total | Jan | Feb | Mar | Apr | May | June | July | August | Sep | Oct | Nov | Dec | Total | Jan | Feb | Mar | Apr | May | June | July | August | Sep | Total | Jan | Feb | Mar | Apr | May | June | July | August | Sep | | | |
| Saloons | 15,902 | 1,145 | 1,353 | 1,097 | 1,322 | 1,524 | 1,271 | 1,077 | 1,279 | 1,518 | | | 14,369 | 1,207.00 | 715.00 | 685.00 | 746.00 | 786.00 | 1,104.00 | 1,082.00 | 797.00 | 1,490.00 | | | | | | | | | | | | | | |
| Station Wagon | 53,542 | 4,080 | 4,998 | 4,206 | 4,999 | 5,568 | 4,972 | 3,741 | 4,522 | 5,519 | | | 54,120 | 4,422.00 | 2,209.00 | 2,289.00 | 2,708.00 | 2,905.00 | 4,217.00 | 3,821.00 | 2,785.00 | 5,678.00 | | | | | | | | | | | | | | |
| Vans, Pick-ups, Etc | 12,568 | 1,126 | 1,530 | 1,179 | 1,307 | 1,138 | 1,188 | 856 | 1,109 | 1,207 | | | 13,878 | 879.00 | 883.00 | 905.00 | 997.00 | 913.00 | 1,188.00 | 1,147.00 | 1,064.00 | 1,304.00 | | | | | | | | | | | | | | |
| M/Buses | 213 | 26 | 45 | 29 | 65 | 84 | 59 | 32 | 41 | 72 | | | 581 | 38.00 | 16.00 | 46.00 | 21.00 | 35.00 | 47.00 | 50.00 | 34.00 | 82.00 | | | | | | | | | | | | | | |
| Buses | 2,210 | 167 | 180 | 203 | 201 | 154 | 156 | 186 | 229 | 268 | | | 2,342 | 179.00 | 186.00 | 125.00 | 174.00 | 141.00 | 113.00 | 146.00 | 172.00 | 115.00 | | | | | | | | | | | | | | |
| Lorries | 10,681 | 1,395 | 1,313 | 1,274 | 1,341 | 1,017 | 1,374 | 979 | 1,077 | 1,094 | | | 13,785 | 790.00 | 922.00 | 814.00 | 910.00 | 714.00 | 806.00 | 781.00 | 901.00 | 855.00 | | | | | | | | | | | | | | |
| Trailers | 2,925 | 324 | 271 | 372 | 352 | 240 | 397 | 312 | 307 | 296 | | | 3,905 | 195.00 | 352.00 | 188.00 | 306.00 | 178.00 | 216.00 | 221.00 | 315.00 | 271.00 | | | | | | | | | | | | | | |
| Motors/Cycles | 111,124 | 11,691 | 12,411 | 15,922 | 10,461 | 7,007 | 8,446 | 10,951 | 14,024 | 11,532 | | | 134,645 | 6,365.00 | 6,838.00 | 4,829.00 | 7,113.00 | 5,489.00 | 14,030.00 | 15,516.00 | 11,399.00 | 7,952.00 | | | | | | | | | | | | | | |
| 3 Wheelers | 4,327 | 362 | 314 | 351 | 549 | 295 | 349 | 295 | 338 | 435 | | | 4,775 | 303.00 | 308.00 | 136.00 | 256.00 | 355.00 | 359.00 | 326.00 | 420.00 | 477.00 | | | | | | | | | | | | | | |
| Wheeled tractors | 2,032 | 200 | 168 | 191 | 256 | 158 | 199 | 153 | 171 | 140 | | | 2,259 | 179.00 | 173.00 | 158.00 | 270.00 | 192.00 | 162.00 | 247.00 | 265.00 | 175.00 | | | | | | | | | | | | | | |
| Others | 2,533 | 214 | 274 | 246 | 279 | 175 | 185 | 158 | 112 | 227 | | | 2,522 | 133.00 | 169.00 | 105.00 | 198.00 | 147.00 | 186.00 | 95.00 | 136.00 | 128.00 | | | | | | | | | | | | | | |
| TOTAL | 218,057 | 20,730 | 22,837 | 25,070 | 21,133 | 17,365 | 18,596 | 18,740 | 23,209 | 22,308 | | | 247,181 | 14,690 | 12,771 | 10,280 | 13,699 | 11,855 | 22,428 | 23,442 | 18,288 | 18,527 | | | | | | | | | | | | | | |

Source: Kenya Revenue Authority