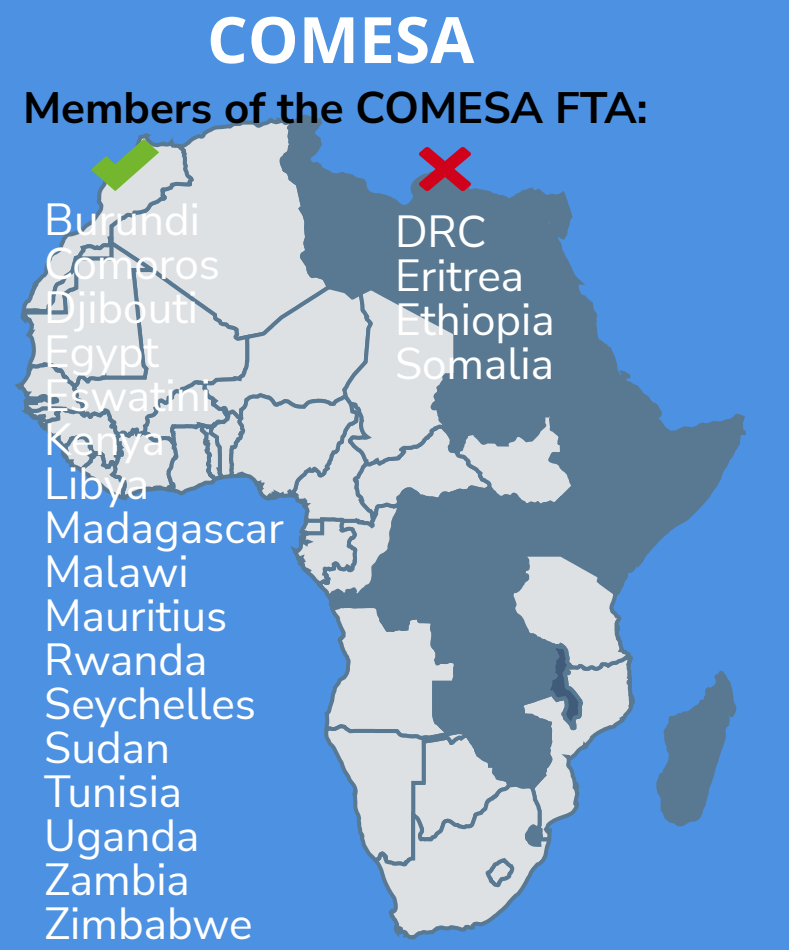


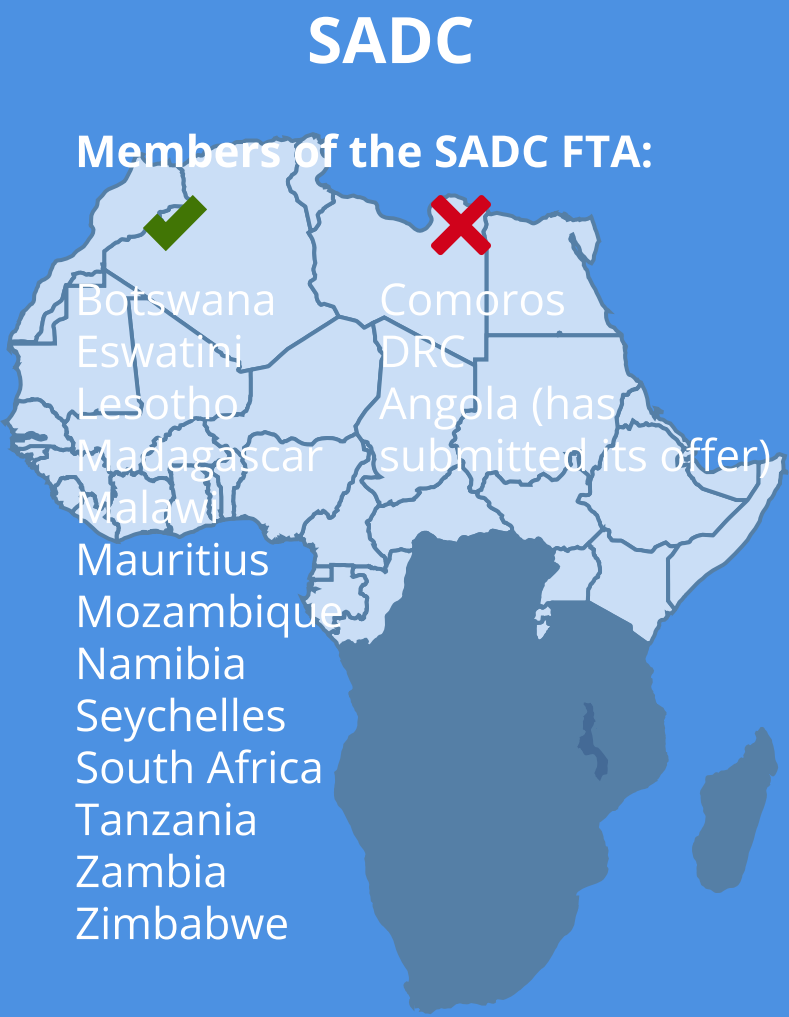
# Seychelles: Intra-Africa trade and tariff profile 2020



**Regional Economic Communities**  
Seychelles is a member of the Common Market for Eastern and Southern Africa (COMESA) and the Southern African Development Community (SADC). The African Continental Free Trade Agreement (AfCFTA) entered into force on 30 May 2019. Seychelles ratified the AfCFTA and currently negotiating the schedule of tariff concessions with other countries.



COMESA has 21 member states, 17 of which are part of the COMESA Free Trade Area. DRC, Eritrea, Ethiopia and Somalia are all in the process of accession

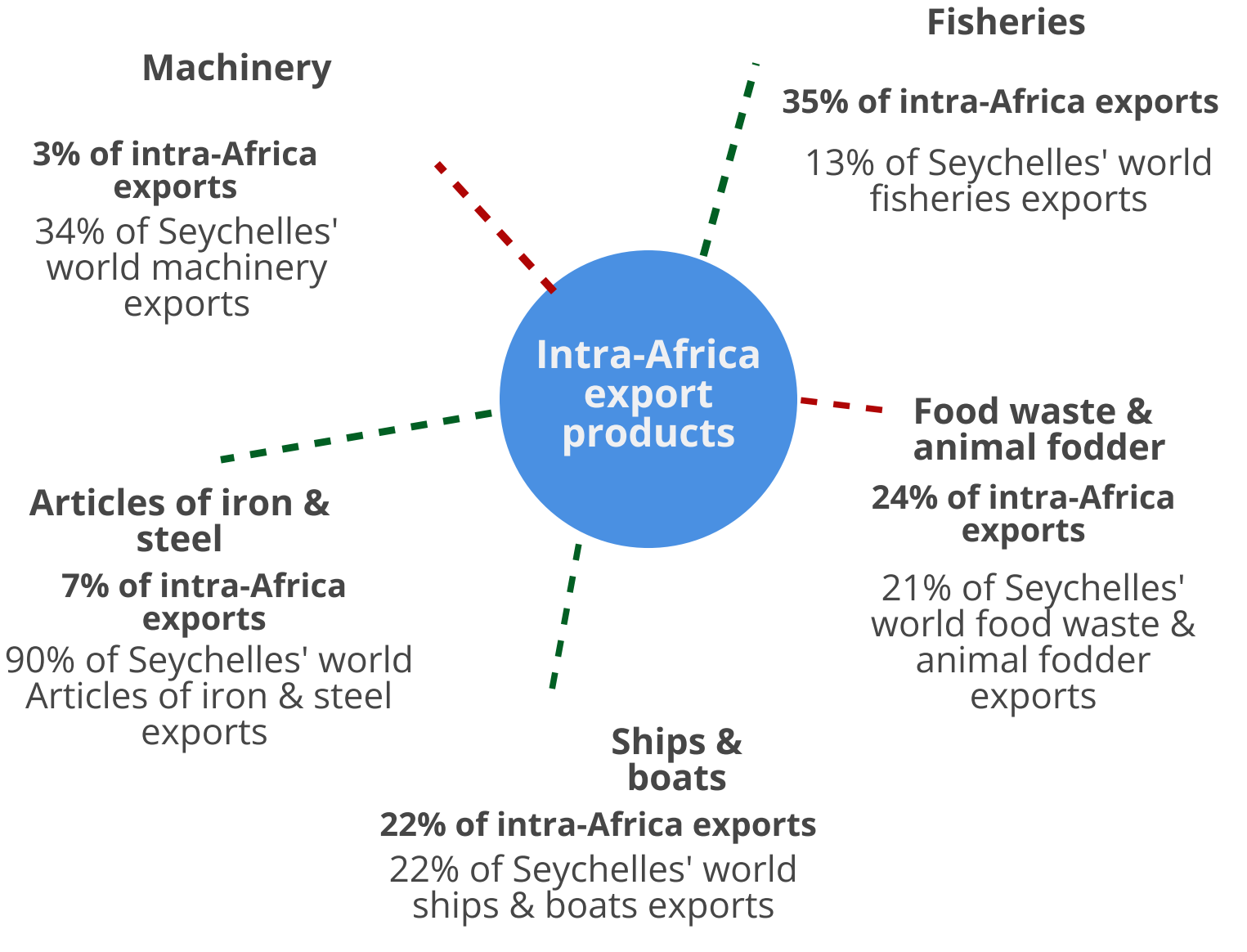
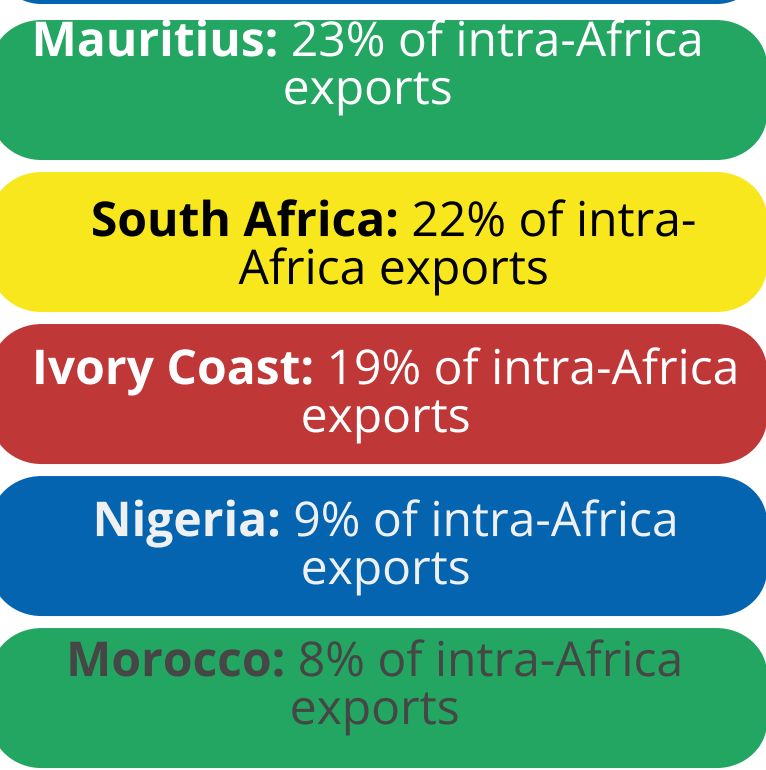


SADC is a Regional Economic Community with 16 member states - all the SACU countries, Angola, DRC, Seychelles, Comoros, Madagascar, Tanzania, Zimbabwe, Zambia, Mauritius, Mozambique and Malawi. 13 SADC member states are members of the SADC Free Trade Area (FTA). Comoros and DRC are yet to join the FTA. Angola has submitted its tariff offer to join the SADC FTA.

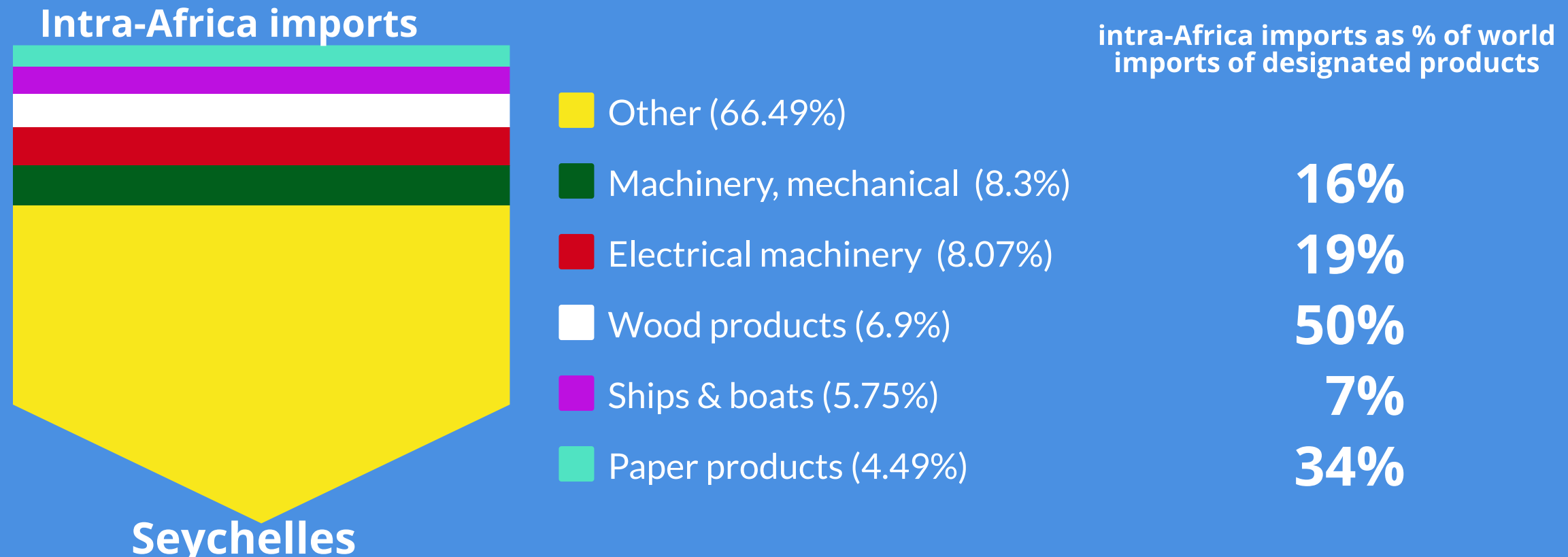
**Intra-Africa exports**  
Seychelles' intra-Africa trade was USD 8 million in 2020. This was 2% of its global exports. The bulk of Seychelles' intra-Africa exports were destined to different African countries and not to other REC members. The main export products were fisheries, food wastes and animal fodder, and ships & boats. Top 10 products (HS2) accounted for 98% of the country's intra-Africa exports



## MAIN DESTINATIONS



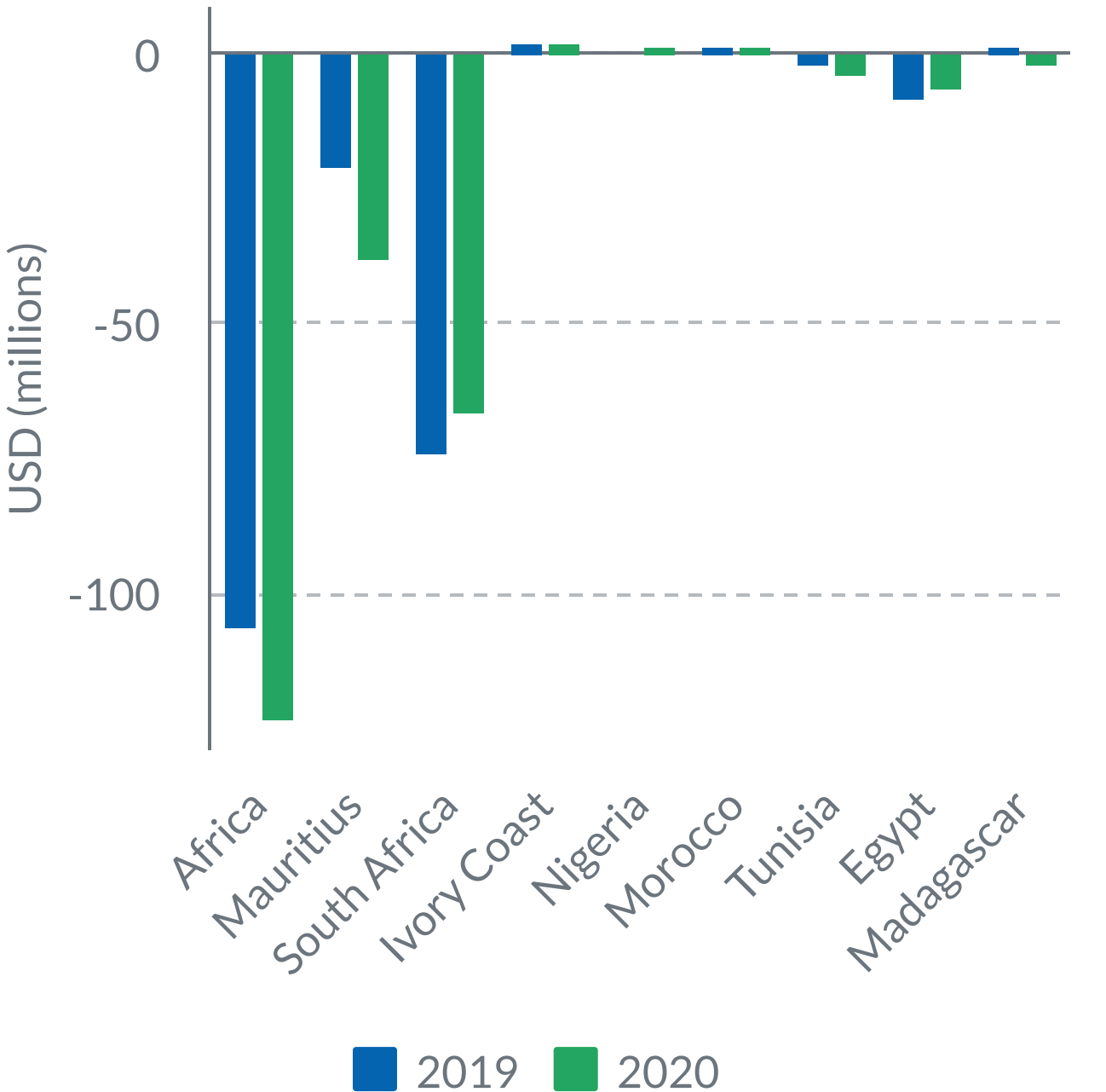
**Intra-Africa imports**  
For 2020, 12% of Seychelles' world imports were intra-Africa imports. These were worth about USD132 million in 2020 and mostly from COMESA and SADC. Between 2019 and 2020, intra-Africa imports decreased by 2%. Main imported products included mechanical and electrical machinery, wood products and ships & boats. Top 10 products (HS2) accounted for 52% of total intra-Africa imports.



## % change in exports and imports (2019 to 2020)

Mauritius	Exports: 88% decline Imports: 11% increase
South Africa	Exports: 29% decline Imports: 11% decline
Ivory Coast	Exports: 47% decline Imports: 87% decline
Nigeria	Exports: 2176% increase Imports: 67% decline
Morocco	Exports: 1% decline Imports: 97% decline
Tunisia	Exports: 83% decline Imports: 10% increase

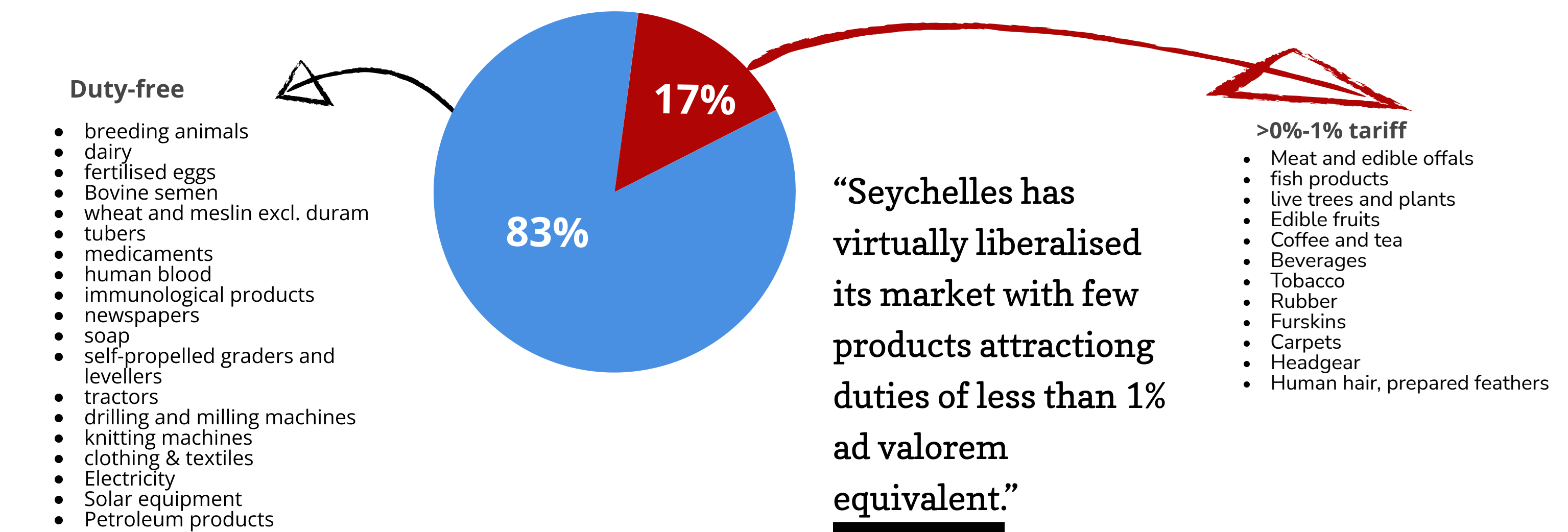
## Trade balance with select countries (US\$m)



## Intra-Africa tariffs

Most of the goods imported into Seychelles from other SADC and COMESA FTAs enter duty-free. Imports from countries outside the COMESA and SADC FTAs face MFN applied duties with maximum applied duties pegged at 0.7% (ad valorem equivalent). Below is a summary of select products and related tariff categories

### MFN duty categories & % of national tariff lines in each category

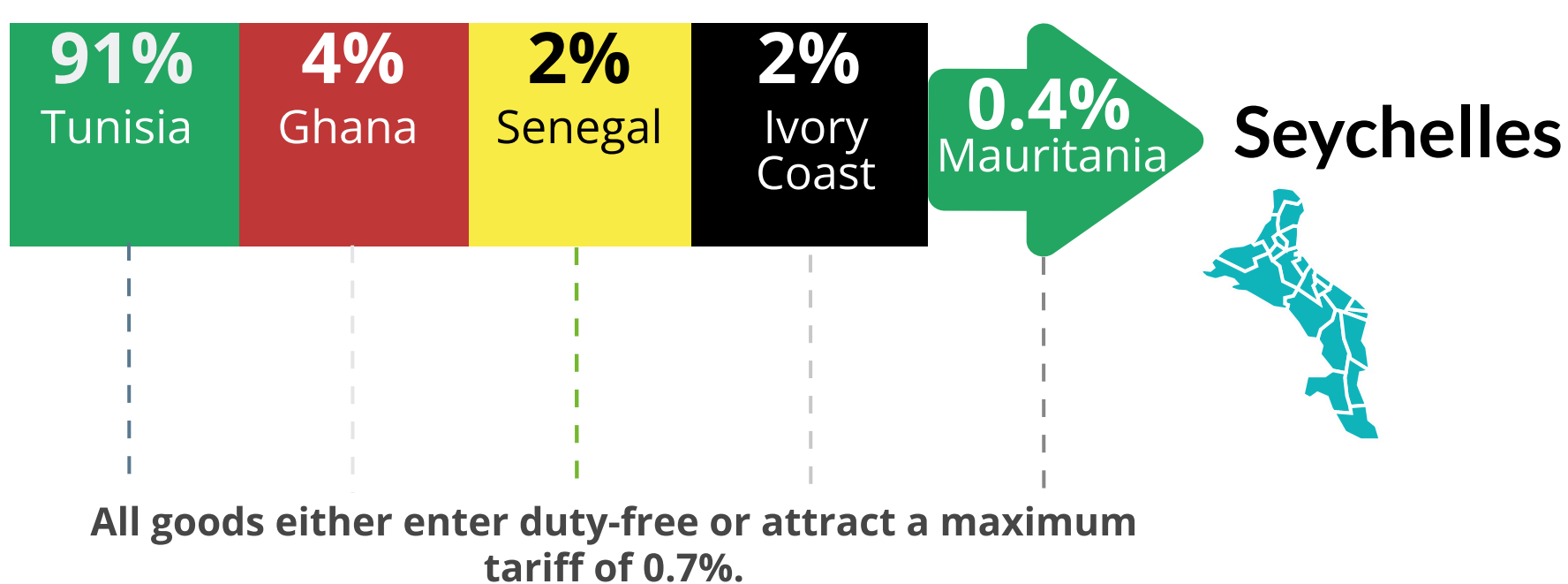


### Trade with African countries outside COMESA and SADC

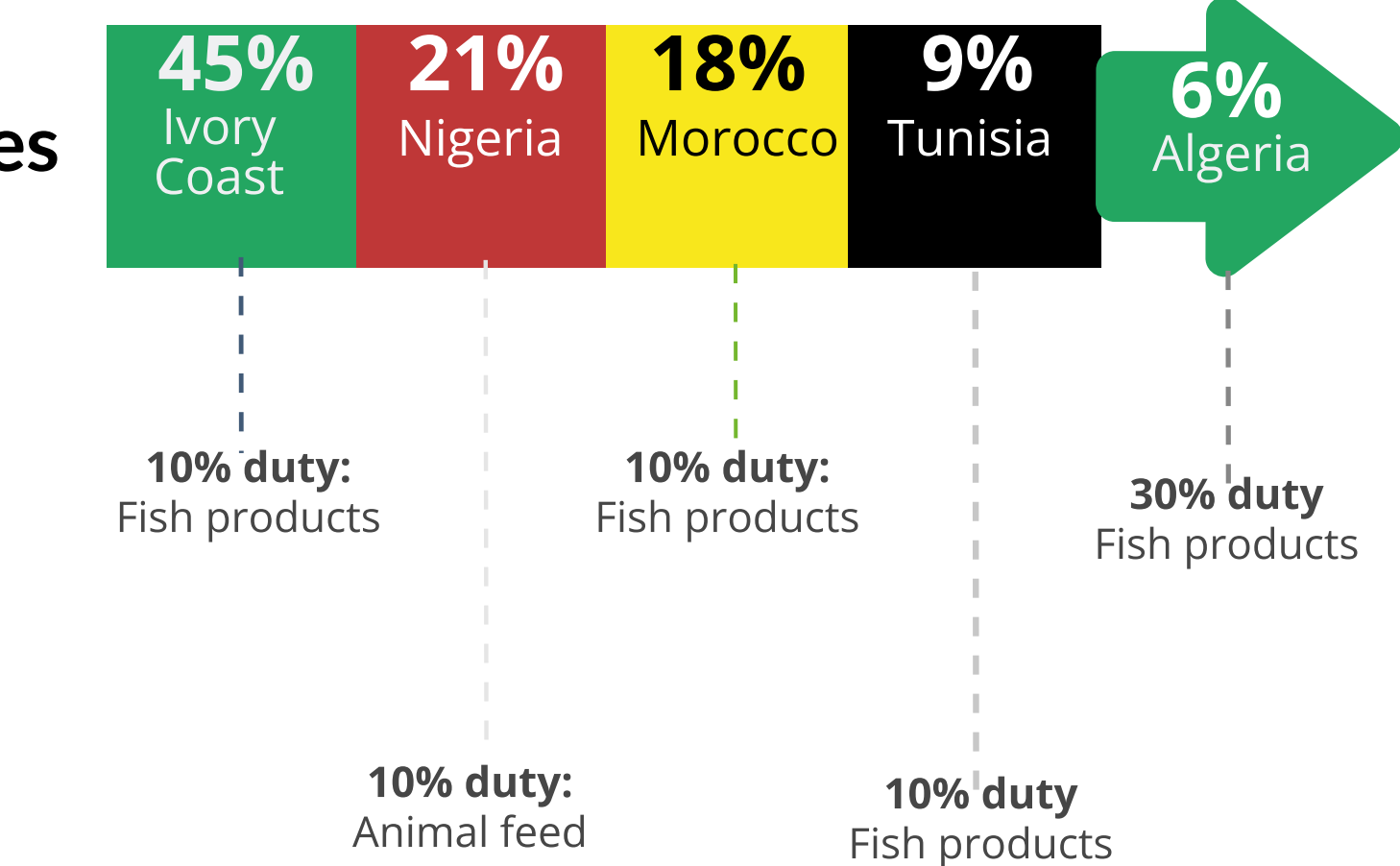
Only 1% of the world and 43% of intra-Africa exports are to African countries not members of COMESA & SADC. Total exports were just above USD 3.5 million. Exports declined by about 40% during 2019/2020 review period. Bulk of exports were fisheries, accounting for 77% share, animal food accounted for an additional 19%.

In terms of imports, 0.5% of the world and 3% of intra-Africa imports are sourced from African countries outside COMESA & SADC. This translate to USD5 million of which over 90% of the imports are animal or vegetable fats. Edible fruits and cement accounted for an additional 6% share.

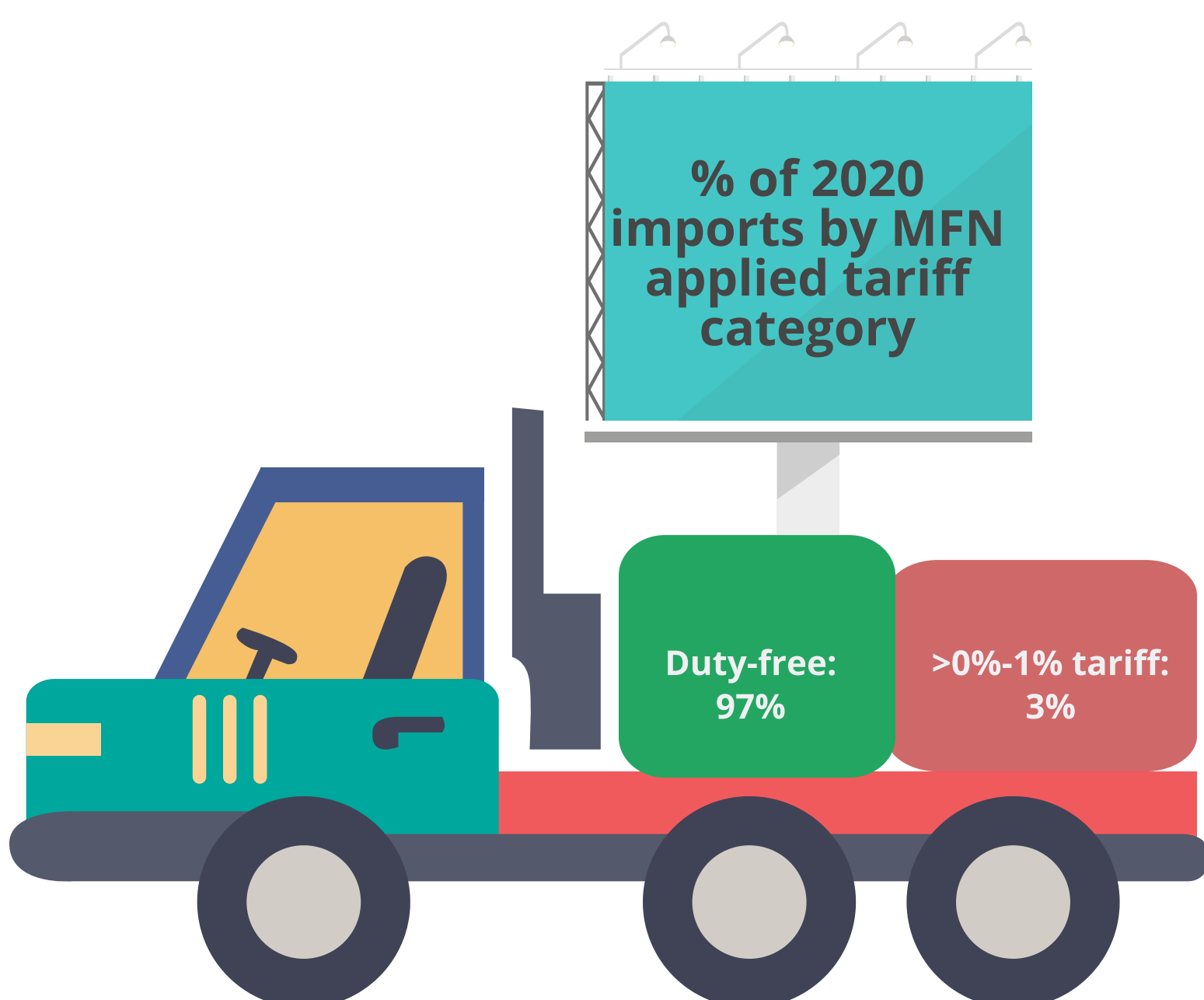
#### Imports into Seychelles



#### Exports from Seychelles



### % of 2020 imports by MFN applied tariff category



Seychelles has virtually liberalised its market. At the MFN rate, about 83% of products enter duty-free.

The additional 17% attracting duties of less than 1% and are mostly levies on the food products, tobacco and other consumer goods.

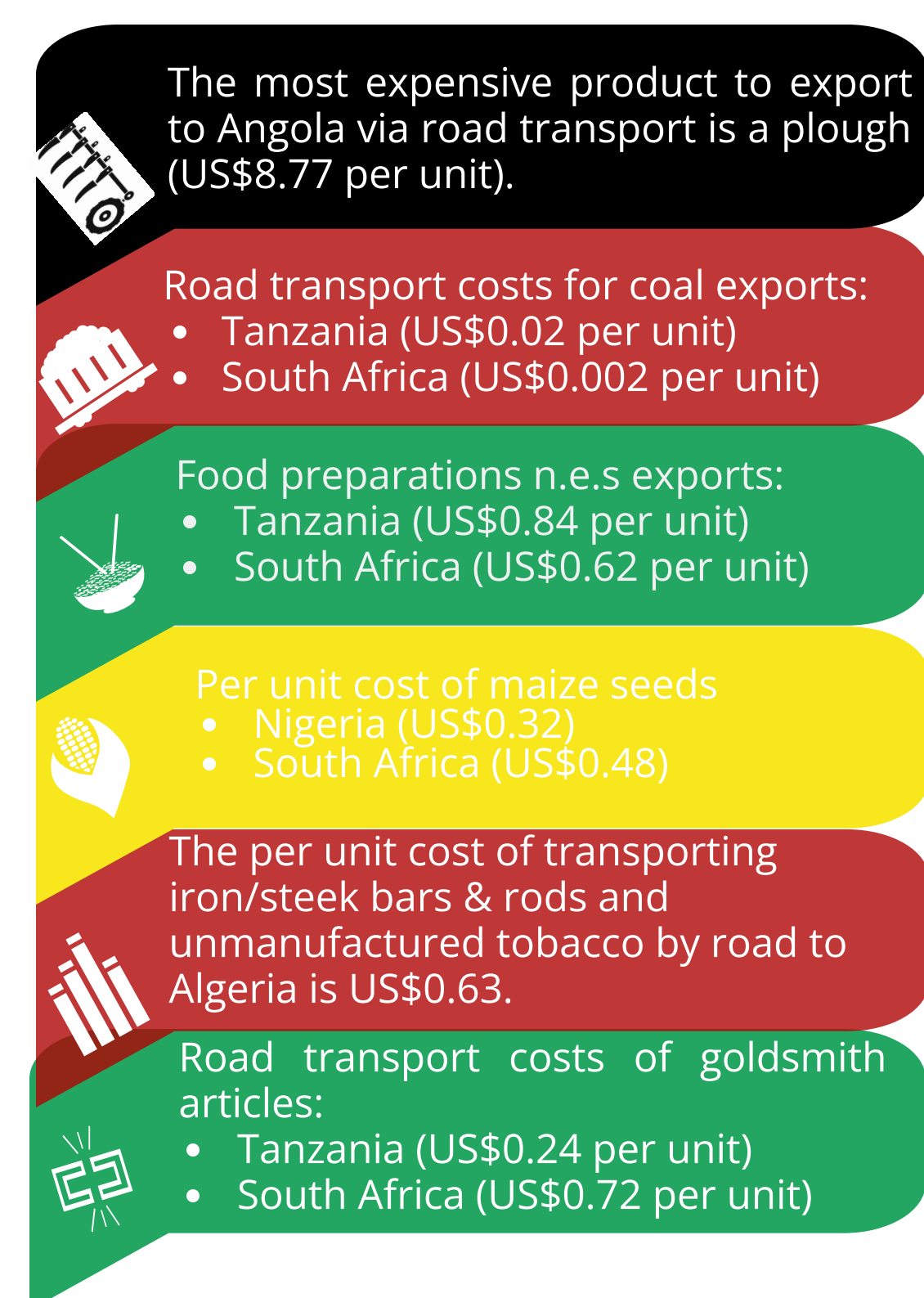
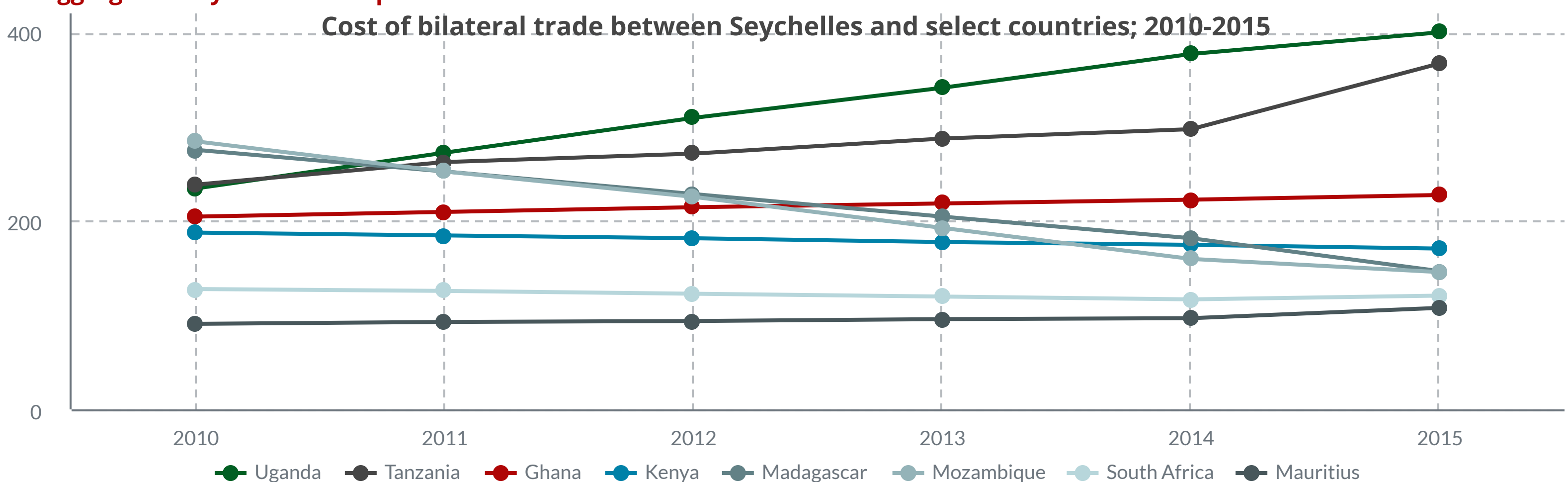
In terms of imports from African countries not members of COMESA or SADC, the bulk of trade enters duty-free.



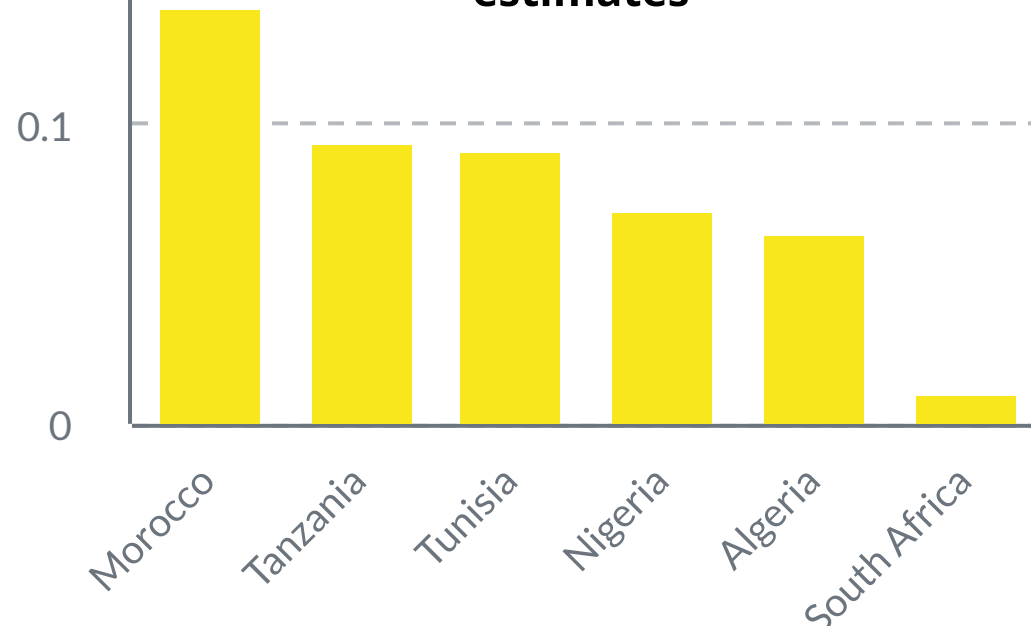
## Non-tariff trade costs

The ESCAP-World Bank trade cost database includes the cost of transportation and the time to complete import procedures and obtain necessary information as non-tariff costs affecting bilateral trade between trade partners. Seychelles' trade with African countries (including Uganda, Tanzania, Ghana and Kenya) is more costly than trade with Brazil, India, Russia, France, Germany, China, the United Kingdom and the United Arab Emirates.

**NB: Per unit transport cost data has been estimated based on neighbouring country data due to the unavailability of disaggregated Seychelles transport data**



### Estimated US\$ per unit cost of road transport unmanufactured tobacco based on regional estimates

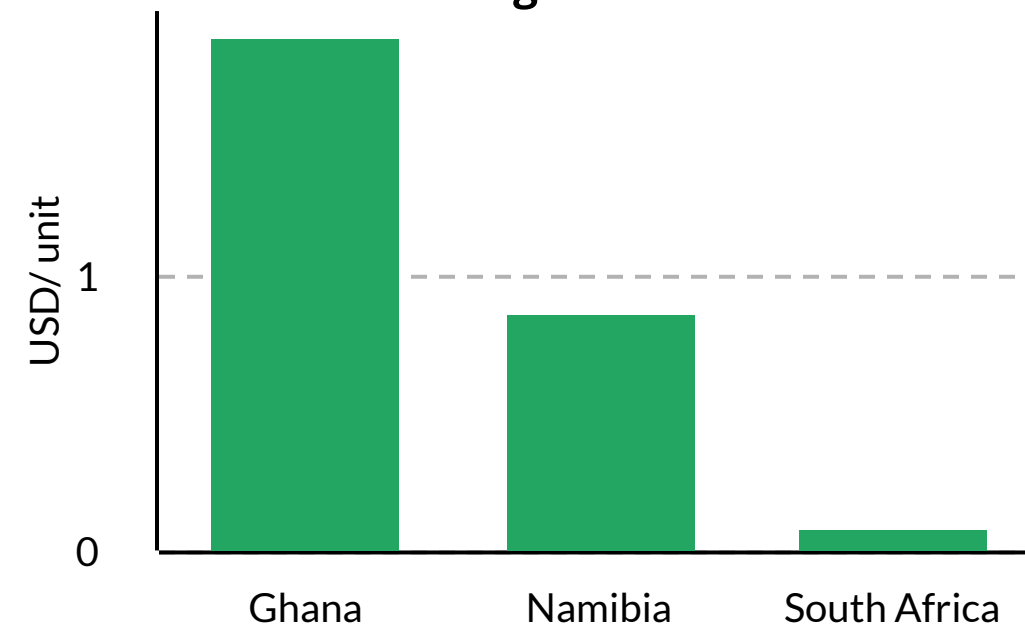


### Transportation costs

The UNCTAD transport cost database measures the cost of bilateral transport by product. Transport cost is defined as the difference between the Cost, Insurance and Freight value and Free on Board value of goods.

Transport cost across all modes of transport (road, rail, air, and sea) is included. The initial data is for 2016, but is in the process of being updated.

### US\$ per unit cost of road transport for aluminium household goods

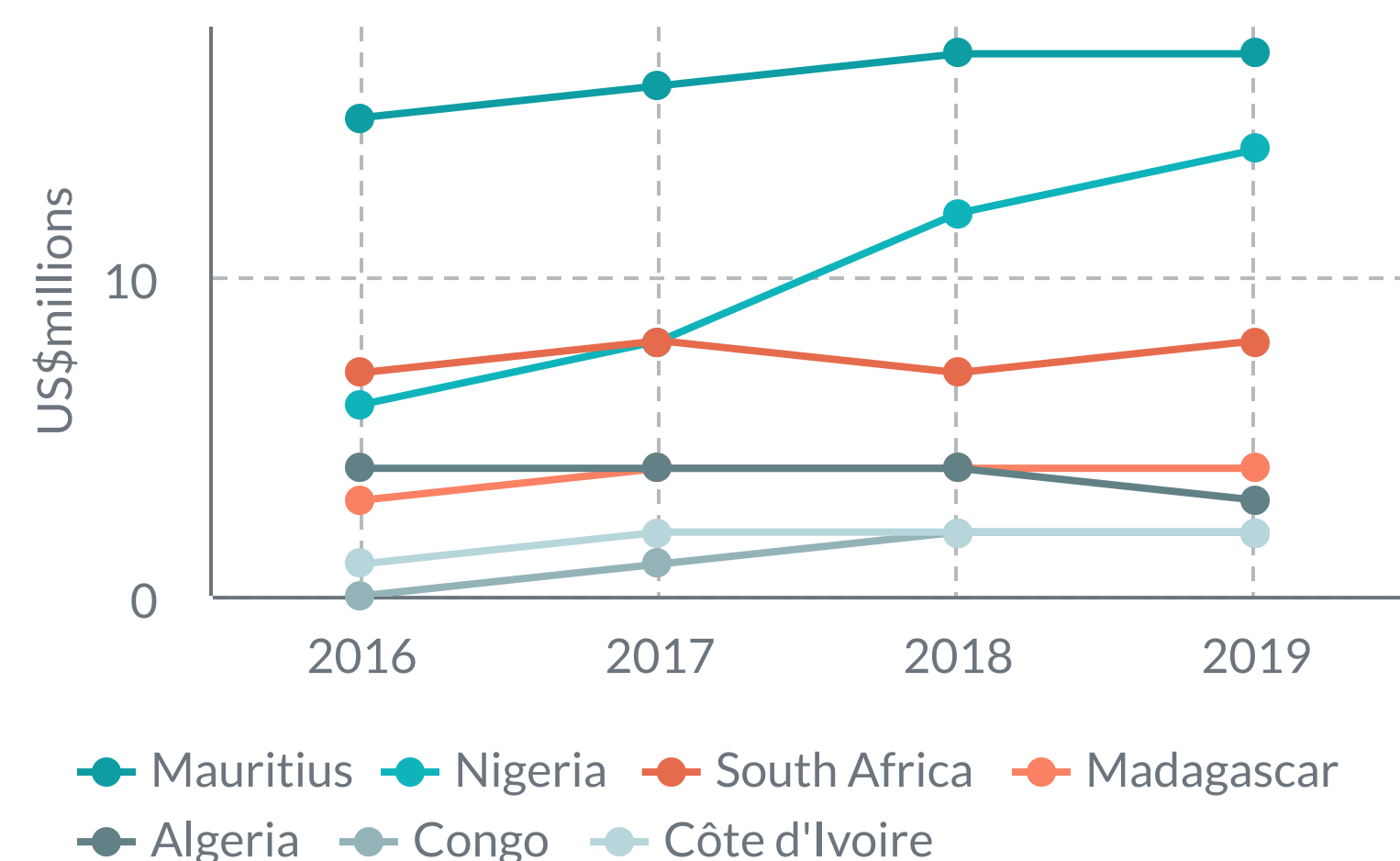


**DUE TO UNAVAILABILITY OF TRANSPORT DATA REPORTED FOR SEYCHELLES, DATA PRESENTED AS REPORTED BY MAURITIUS IS USED AND SHOULD ONLY BE CONSIDERED AS INDICATIVE OF REGIONAL COSTS FOR ISLAND COUNTRIES**

### Trade in services

The WTO-OECD Balanced Trade in Services Dataset (BaTiS) is an experimental dataset which contains a complete, consistent and balanced matrix of international trade in services. Statistics cover the period 2005-2019, for over 200 reporters and partners, and 12 EBOPS 2010 categories in addition to total services. **NB: data presented is only for African countries with complete reported data**

## Seychelles total services exports to select countries (2016-2019)



## Seychelles total services imports to select countries (2016-2019)

