

South Africa's transport routes: air & maritime trade for January-June 2020

United States
Colour photo film, jewelry & aerals

China
Lobsters

United Kingdom
Berries & enzymes

Germany
Laboratory reagents

Netherlands
Nucleic acids

France
Aerials & ostrich leather

United States
Engine parts

Nigeria
Meter & regulating instrument parts

Catalysts with precious metal components to the Netherlands and electric control panels to the UK & Germany

Exports to the US, UK, Europe and Asia are all mainly base metals - platinum, rhodium, palladium & iridium

Exports to the UAE, Switzerland & Botswana are mainly diamonds

Kenya - Medicines, dental instruments & fruits

Nigeria - Mechanical seals, laboratory reagents & coins

OR Tambo International

Netherlands: aluminium & titanium ores

Richard's Bay → India: coal

China: pig-iron & chromium and iron ores

King Shaka International

Durban → Chemical wood pulp (6%)

East London

93% vehicles & components

EU, US, Japan & Australia

Double-cab vehicles (5%)

Saldanha

99% ores & concentrates of which 63% is to China,

Cape Town International

Mosselbay

Port Elizabeth International

Germany: vehicles

Netherlands: lemons & oranges

China: manganese ores & shorn wool

Japan: vehicles & manganese ores

Czech Republic: catalytic converters

US: catalytic converters & catalysts with precious metal compounds

Light petroleum oils

93% to Netherlands

Chromium ores (4%)

Acyclic hydrocarbons (4%)

Residual fuel oils (4%)

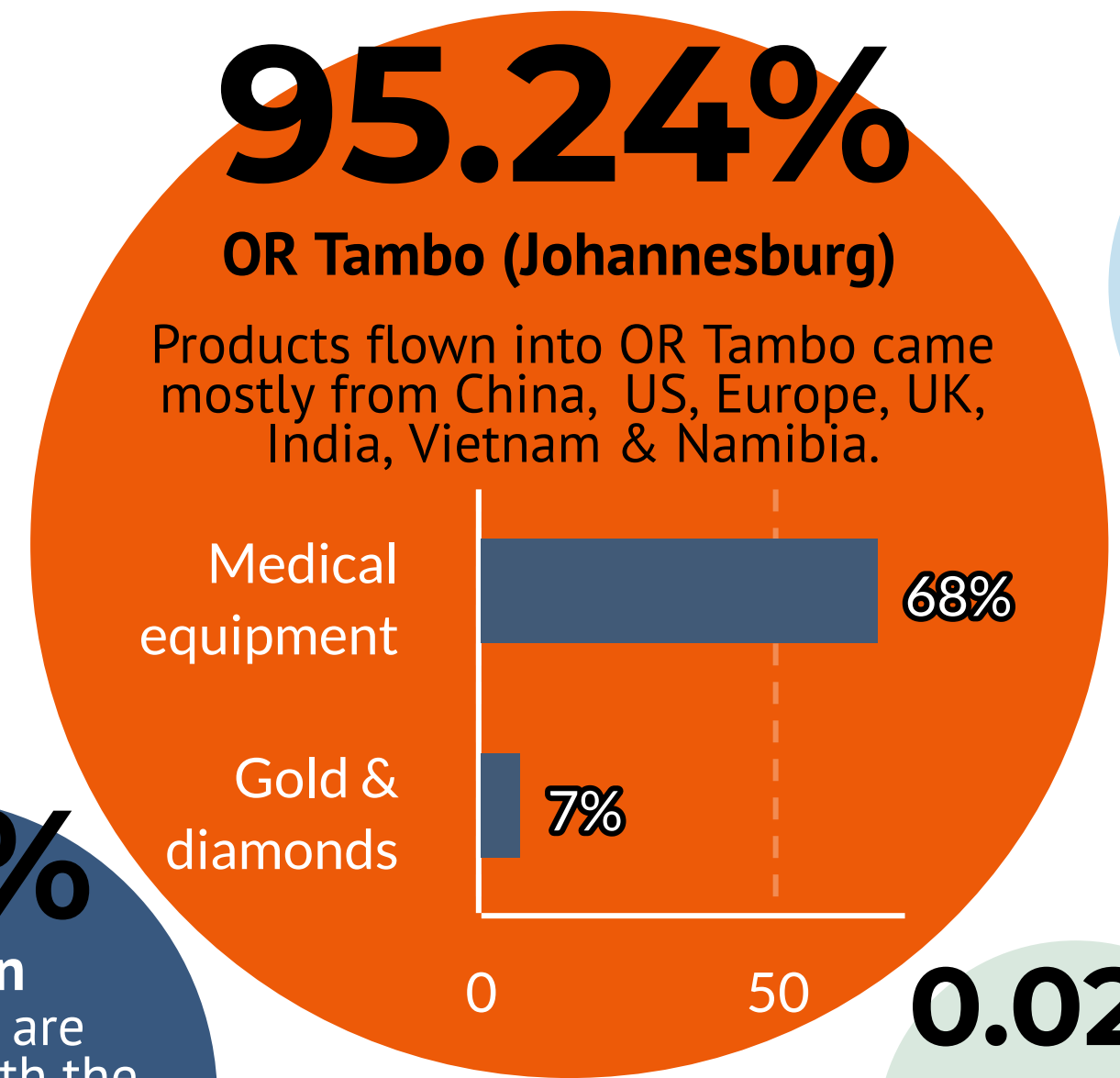
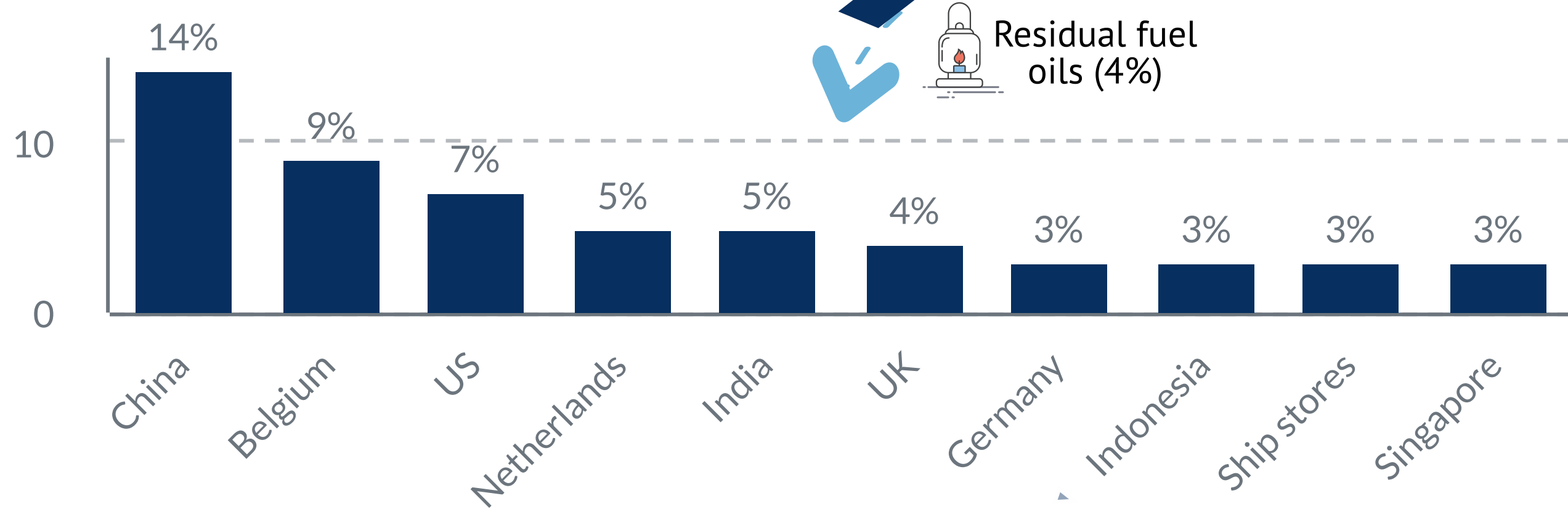
49% Fruit; mainly grapes, citrus, apples & pears to the Netherlands, UK, Russia & UAE

8% Beverages; mainly wine to the UK & US

6% Ores; mainly manganese & zirconium to China

5% Fish; mainly hake, tuna & mackerel to Spain, Italy & Portugal

4% Catalytic converters to Germany & Thailand and engine parts to Germany & the US



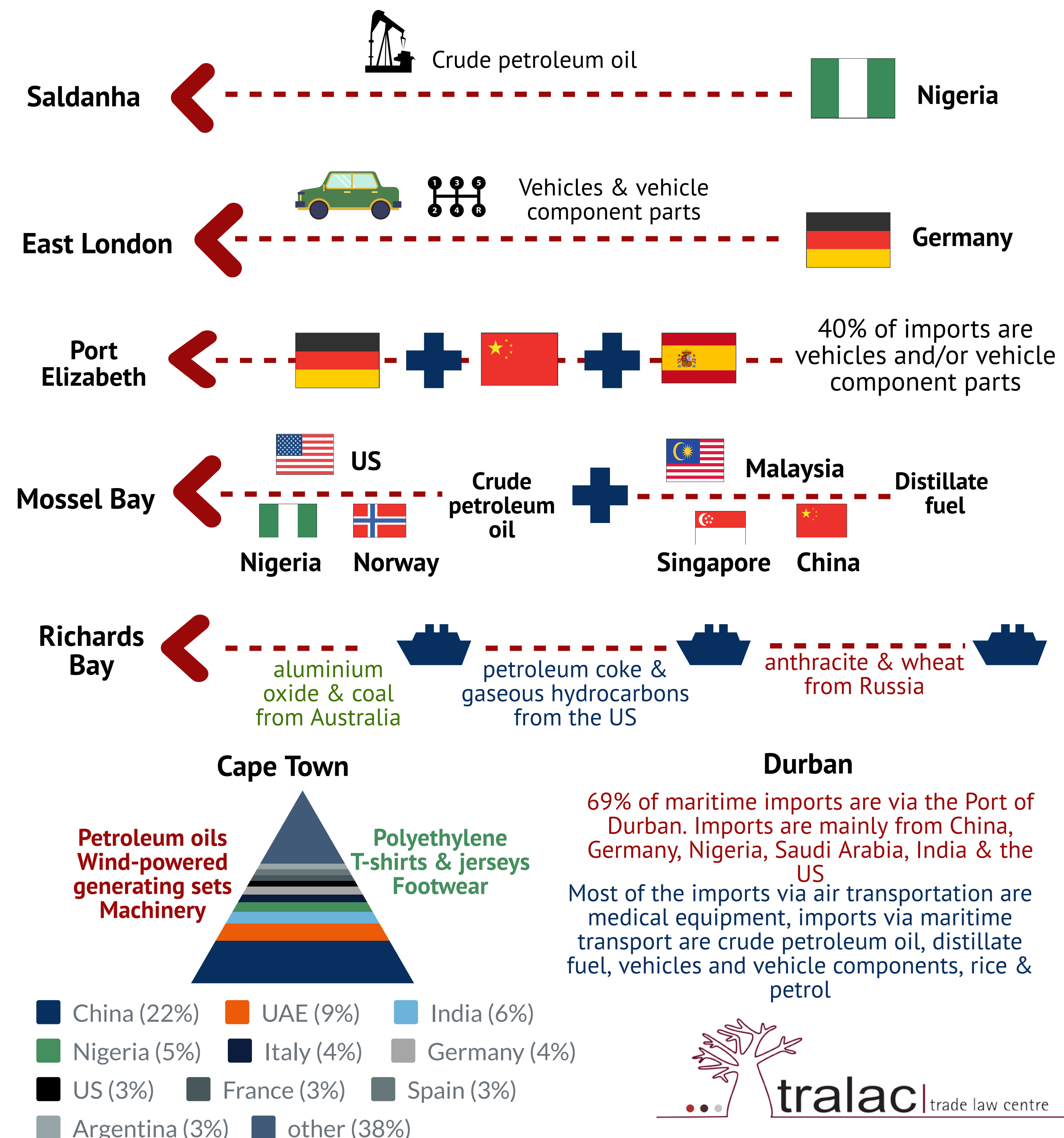
0.13%
Port Elizabeth
Mainly chemical compounds from India

0.71%
King Shaka (Durban)
Medical equipment from China & Germany

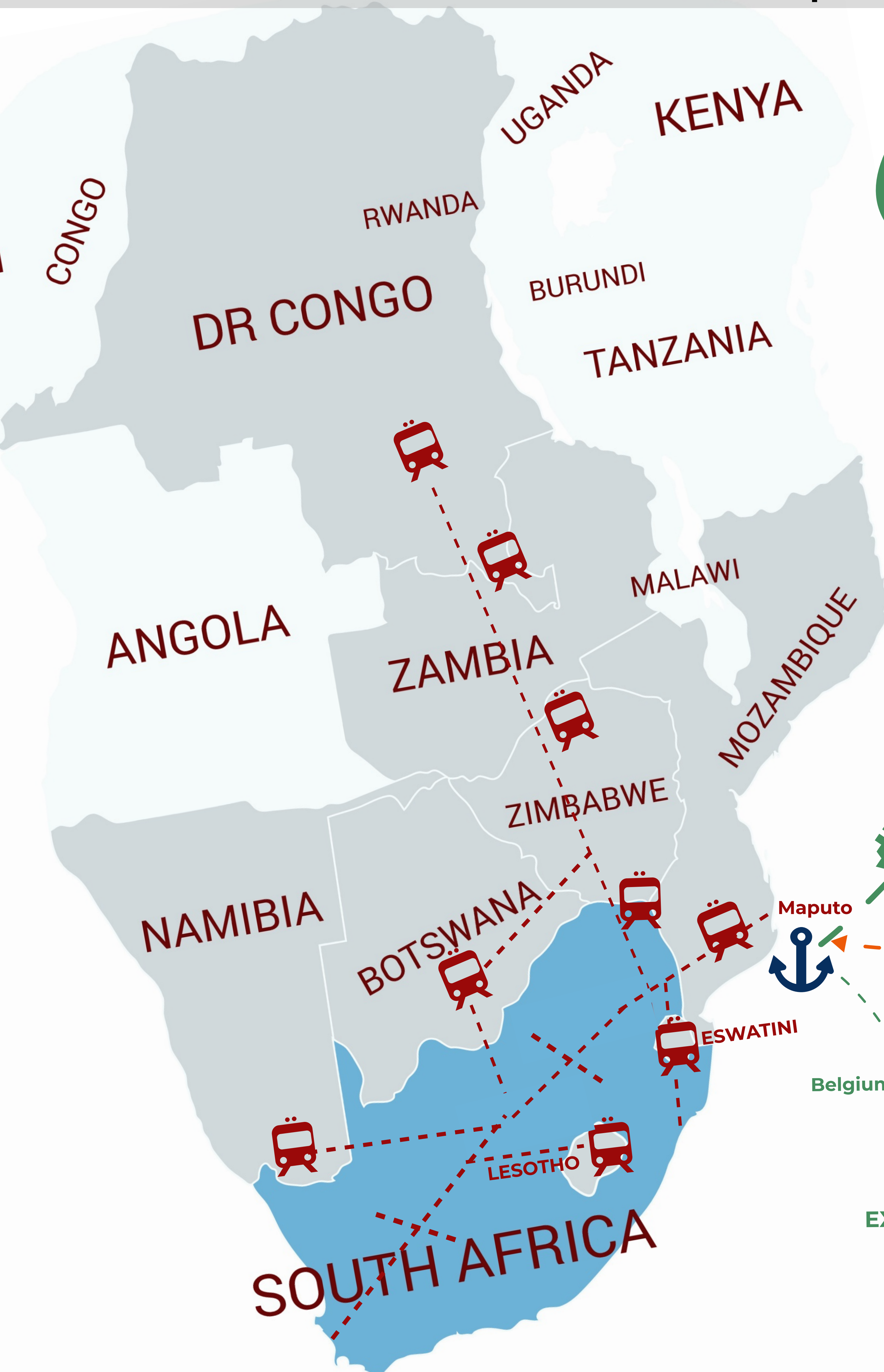
3.9%
Cape Town
All imports are associated with the medical industry sourced mainly from the US, China, Germany & India

0.02%
Upington
Mainly aircraft from the US

Maritime imports



South Africa's transport routes: rail for January-June 2020

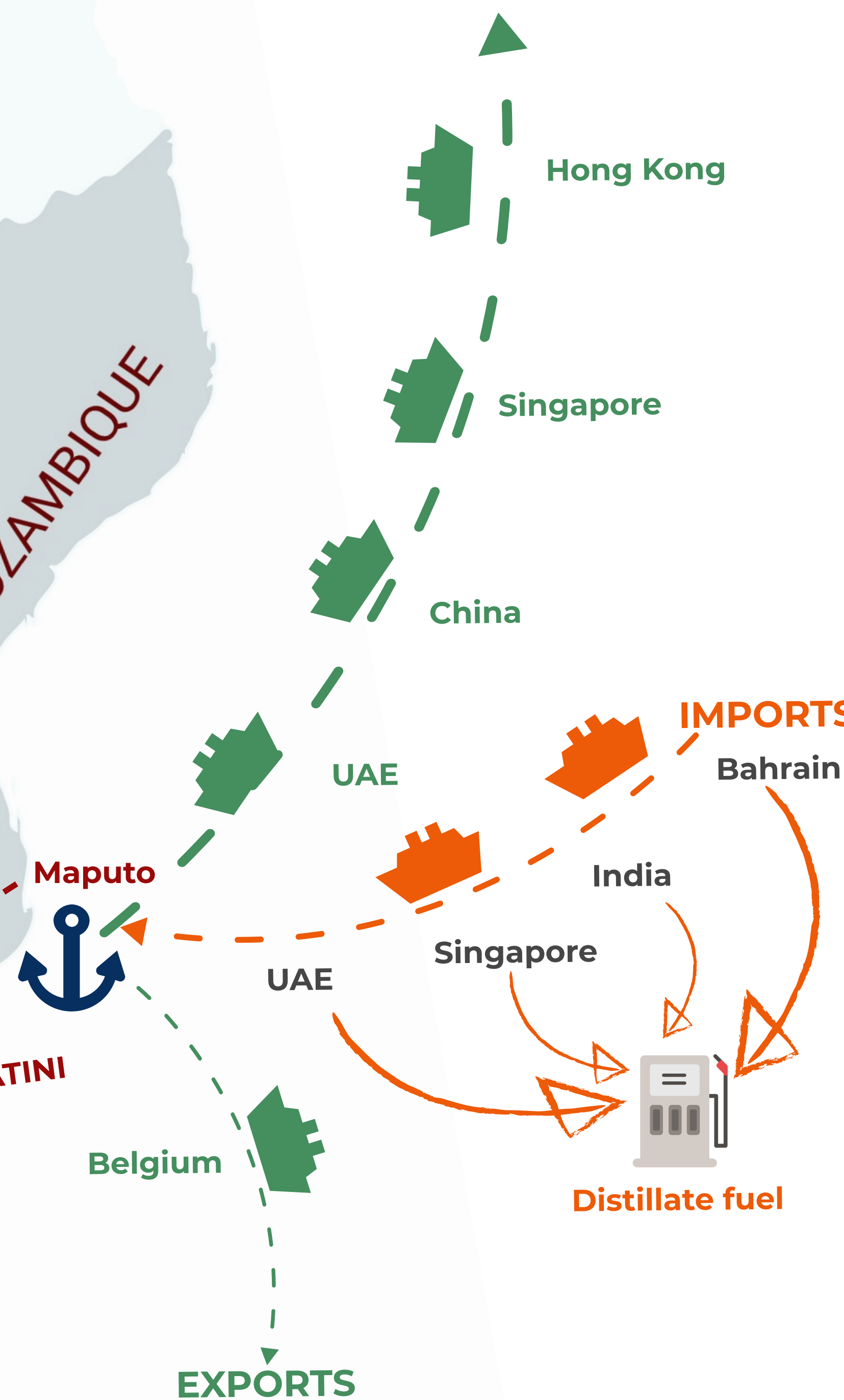


46%

of imports via rail transportation are from Botswana through the Ramatlabama border post and are mainly imports of disodium carbonate, salt (not for human consumption) & coal.

- 24% of the imports are distillate fuel from the UAE, Singapore, India & Bahrain which enter South Africa via Mozambique
- Re-imports of diesel locomotives also re-enter South Africa via Beitbridge
- 24% of rail imports are ships' derricks which entered from an unspecified source.

EXPORTS

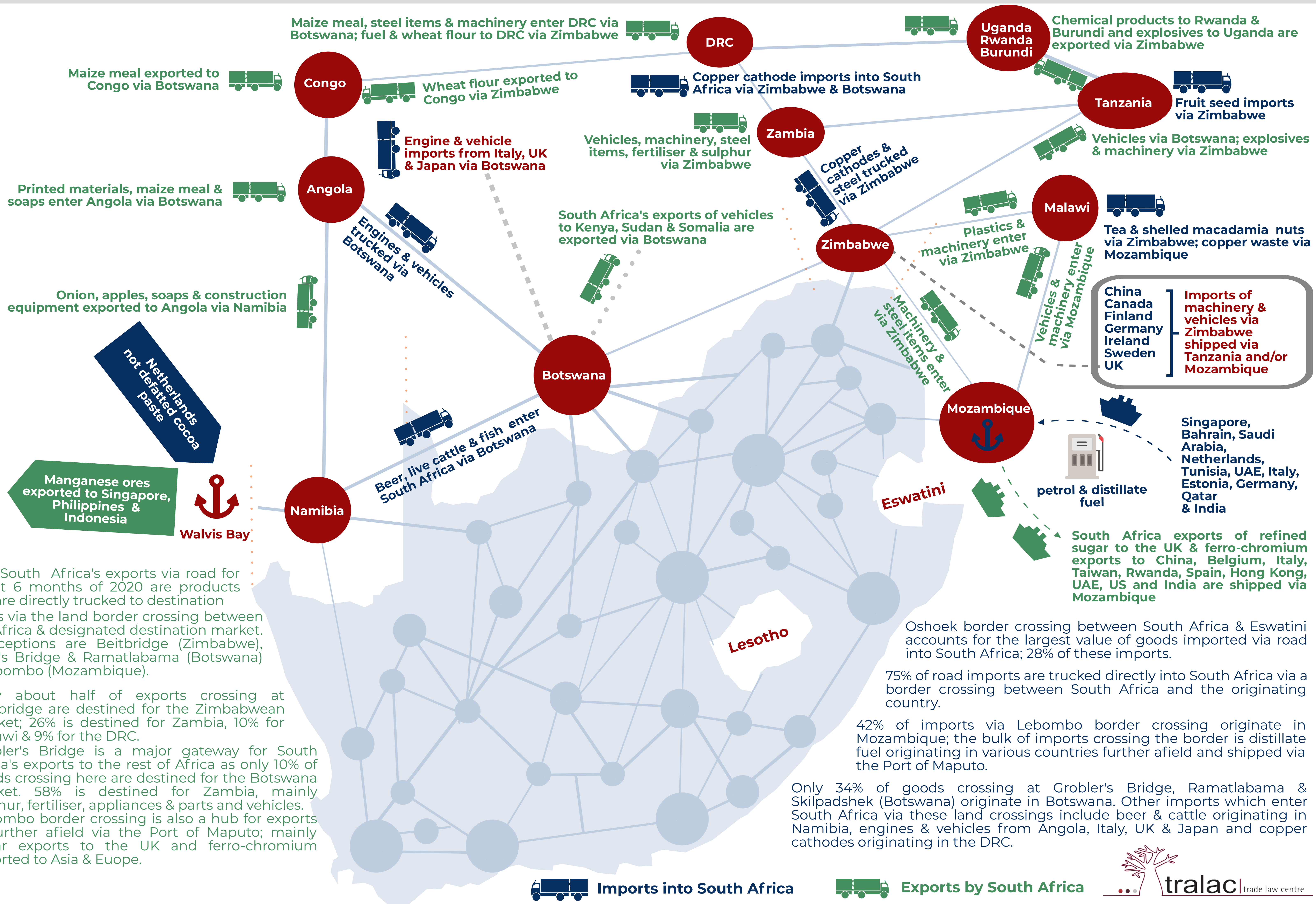


88% of South Africa's rail exports cross into Mozambique and more than half of these exports are shipped to Asia and Belgium. Exports via the Port of Maputo to China are iron ores, chromium ores & ferro-chromium. Exports to Singapore are iron ores, to Hong Kong chromium ores, to Belgium ferro-chromium and to the UAE also chromium ores and ferro-chromium.

The bulk of intra-Africa rail exports are to neighbouring countries Namibia (Nakop/Narogas border), Botswana (Ramatlabama), Zimbabwe (Beitbridge), Mozambique (Komatipoort/Lebombo), Eswatini (Golela) and Lesotho (Maseru Bridge). However, some products are transported further afield - fertiliser and sulphur destined for Zambia go via Zimbabwe, while fuel exported to DRC goes via Zimbabwe and Zambia. Wheat exports to Zimbabwe and Zambia travel via Ramatlabama (Botswana) to Zimbabwe and then Zambia.

39% of rail exports are ores & concentrates and 38% are iron & steel. Exports are mainly iron ores, chromium ores & ferro-chromium which cross into Mozambique at the Lebombo border post and are then shipped to destinations in Asia & Belgium via the Port of Maputo. Intra-Africa exports are mainly fuel, iron ores & sulphates. Refined sugar is also exported to Mozambique via rail link, also cement clinkers to Lesotho via Maseru Bridge and ammonia to Namibia via Nakop/Narogas.

South Africa's transport routes: road transportation for January-June 2020



69% of South Africa's exports via road for the first 6 months of 2020 are products which are directly trucked to destination markets via the land border crossing between South Africa & designated destination market. The exceptions are Beitbridge (Zimbabwe), Grobler's Bridge & Ramatlabama (Botswana) and Lebombo (Mozambique).

- Only about half of exports crossing at Beitbridge are destined for the Zimbabwean market; 26% is destined for Zambia, 10% for Malawi & 9% for the DRC.
- Grobler's Bridge is a major gateway for South Africa's exports to the rest of Africa as only 10% of goods crossing here are destined for the Botswana market. 58% is destined for Zambia, mainly sulphur, fertiliser, appliances & parts and vehicles.
- Lebombo border crossing is also a hub for exports to further afield via the Port of Maputo; mainly sugar exports to the UK and ferro-chromium exported to Asia & Europe.