



Committee on Regional Trade Agreements

FACTUAL PRESENTATION

ACCESSION OF SEYCHELLES TO THE SOUTHERN AFRICAN DEVELOPMENT COMMUNITY (SADC)
TRADE PROTOCOL
(GOODS)

Report by the Secretariat

This report, prepared for the consideration of the Accession of Seychelles to the Southern African Development Community (SADC) Trade Protocol, has been drawn up by the WTO Secretariat on its own responsibility and in full consultation with the Parties. The factual presentation reproduces as closely as possible the terminology used in the Agreement and in the comments provided and does not imply official endorsement or acceptance by the Secretariat of such terminology. The report has been drawn up in accordance with the rules and procedures contained in the Decision for a Transparency Mechanism for Regional Trade Agreements (WT/L/671) and thus does not imply any value judgement by the Secretariat regarding the contents of the Agreement.

Any technical questions arising from this report may be addressed to Jo-Ann Crawford (tel: +41 22 739 5422). Any statistical questions arising from this report may be addressed to Rowena Cabos (tel: +41 22 739 5185).

TABLE OF CONTENTS

	<i>Page</i>
1 TRADE ENVIRONMENT.....	3
2 CHARACTERISTIC ELEMENTS OF THE AGREEMENT	13
2.1 Background Information	13
3 PROVISIONS ON TRADE IN GOODS	13
3.1 Import duties and charges, and quantitative restrictions.....	13
3.1.1 Liberalization of trade and tariff lines	13
3.1.2 Tariff rate quotas.....	24
3.2 Regulatory Provisions of the Agreement	24
4 GENERAL PROVISIONS OF THE AGREEMENT	25
4.1 Relationship with other agreements concluded by the Parties.....	25
ANNEX 1	27

Key Facts

Parties to the Agreement: Seychelles - members of the SADC Trade Protocol – Botswana, Lesotho, Malawi, Mauritius, Mozambique, Namibia, South Africa, Eswatini, Tanzania, Zambia and Zimbabwe

Date of Signature: 1 April 2015

Date of Entry into Force: 25 May 2015

Date of Notification: 8 January 2016

Full implementation: 1 January 2026

1 TRADE ENVIRONMENT

1.1. Seychelles became a member of Southern African Development Community (SADC) in September 1997, but withdrew in 2004. In 2008 the Seychelles was readmitted to SADC and became party to the SADC Trade Protocol in May 2015. Of the fifteen countries that are members of SADC, two (Angola and the Democratic Republic of Congo) have not yet implemented the SADC Protocol on Trade and thus are not members of the SADC free trade area. Madagascar is a signatory to the SADC Trade Protocol but its accession to SADC has not been notified to the WTO.

1.2. The Seychelles is a party to three RTAs notified to the WTO including its accession to the Southern African Development Community (SADC).¹ The Seychelles is smaller than its SADC partners in terms of GDP (2016) but has a much higher trade to GDP ratio for the period 2014-2016 (Table 1.1). South Africa is by far the largest of the SADC countries in terms of its GDP (2016) which is more than double the combined total of other SADC countries. In 2016 the Seychelles ran a global merchandise trade deficit, as did all of its SADC partners except Botswana and Eswatini.

Table 1.1 SADC Members' Merchandise Trade Profiles

Member	Merchandise trade - 2016				Rank in world trade - 2014		GDP US\$ billion (2016)	Trade to GDP ratio - 2014-16
	Exports US\$ billion	% world exports	Imports US\$ billion	% world imports	Exports	Imports		
Botswana	7.4	0.05	6.1	0.04	68	89	15.1	52.0
Lesotho	0.9	0.01	1.8	0.01	125	125	2.3	60.1
Malawi	1.0	0.01	2.4	0.01	122	114	5.5	34.7
Mauritius	2.4	0.01	4.7	0.03	101	100	11.9	52.4
Mozambique	3.4	0.02	5.3	0.03	91	92	11.3	49.7
Namibia	4.4	0.03	6.4	0.04	87	88	10.6	53.9
Seychelles	0.4	0.00	1.0	0.01	136	141	1.4	103.1
South Africa	75.1	0.47	91.6	0.56	24	23	294.1	31.2
Eswatini	1.4	0.01	1.3	0.01	112	135	3.8	47.7
Tanzania	5.1	0.03	9.6	0.06	78	71	47.2	22.7
Zambia	5.8	0.04	7.0	0.04	73	83	21.3	38.4
Zimbabwe	2.8	0.02	3.7	0.02	95	104	14.2	43.4

Source: WTO Secretariat Trade Profiles.

¹ WTO RTA Database.

1.4. Developments in recent years in global and intra trade between the Seychelles and its SADC partners are shown in Chart 1.1. The Seychelles has run a constant and expanding trade deficit on a global basis and with its SADC partners over the period surveyed (2000-2016). South Africa is the Seychelles' largest source of imports from its SADC partners followed by Mauritius. With the exception of 2011, the Seychelles' exports to SADC countries are dwarfed by its imports. The bulk of the Seychelles' exports to SADC countries are destined for South Africa and Mauritius.

US\$ million

US\$ billion

2,000
1,800
1,600
1,400
1,200
1,000
800
600
400
200
0

300
250
200
150
100
50
0

Export Import
2000
Export Import
2001
Export Import
2002
Export Import
2003
Export Import
2004
Export Import
2005
Export Import
2006
Export Import
2007
Export Import
2008
Export Import
2009
Export Import
2010
Export Import
2011
Export Import
2012
Export Import
2013
Export Import
2014
Export Import
2015
Export Import
2016

Malawi
Botswana
South Africa
Eswatini
Namibia
Zambia
Mauritius
United Rep. of Tanzania
Zimbabwe
Lesotho
Madagascar
Mozambique

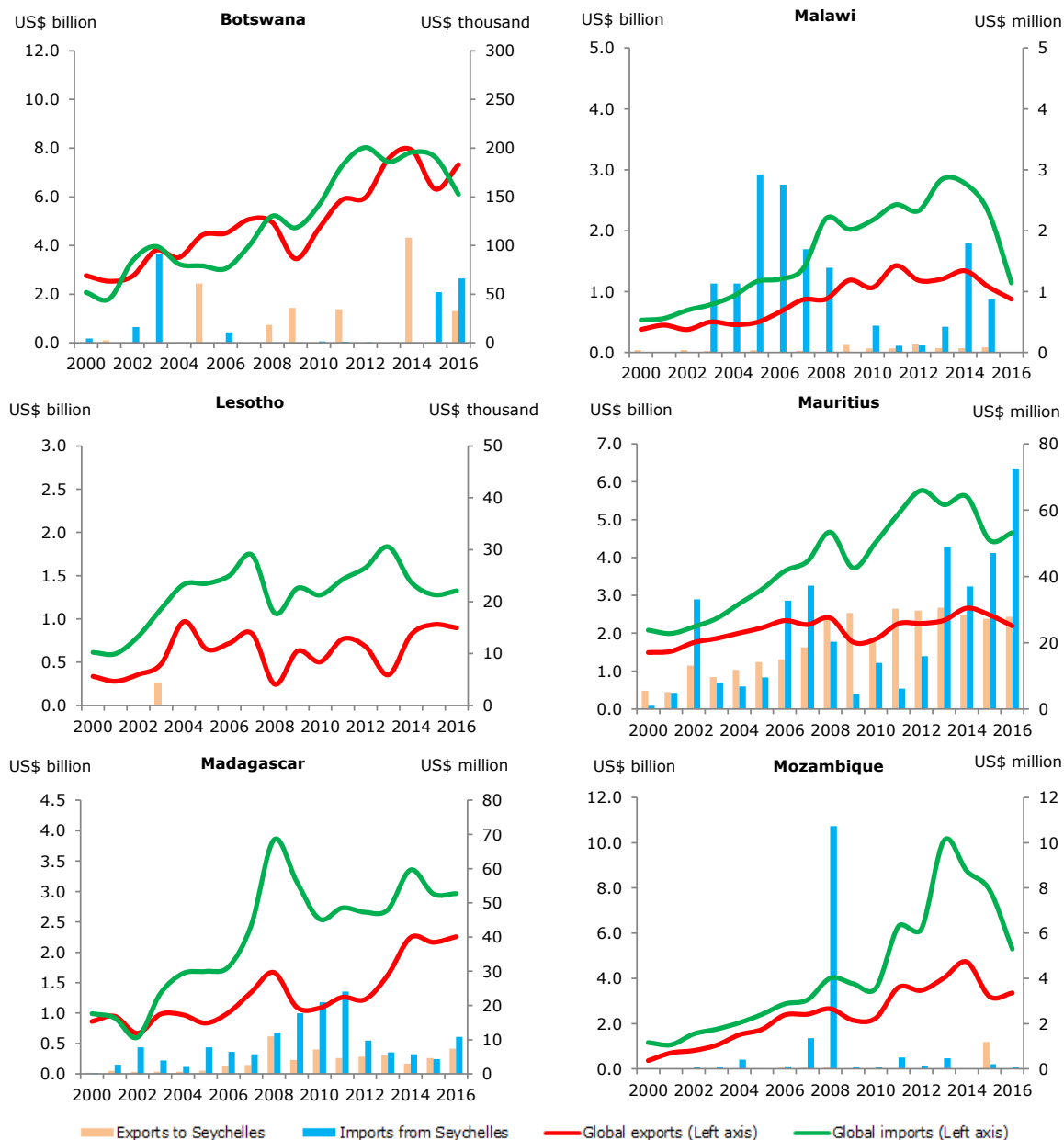
Global exports (Left axis)
Global imports (Left axis)

Botswana:	No trade data for 2001, 2004, 2006, 2007, 2009 and 2016. no export data for 2000, 2002, 2005, 2008, 2010-2012, 2014 and 2015.
Lesotho:	No trade data for 2000-2002, 2004-2009, 2012-2014 and 2016. no export data for 2003, 2010 and 2011. no import data for 2015.
Malawi:	No trade data for 2001, 2004, 2005, 2009 and 2013. no export data for 2002-2003, 2006-2008, 2011-2012, 2014-2016. no import data for 2000.
Mozambique:	No trade data for 2000, 2003, 2006, 2007 and 2009. no export data for 2001, 2004, 2005, 2012 and 2016. no import data for 2008 and 2013.
Namibia:	No trade data for 2000, 2007 and 2009. no export data for 2001-2002, 2005-2006, 2011-2016.
Eswatini:	No trade data for 2003 and 2009. no export data for 2000-2002, 2006-2007, 2012-2016.
Tanzania:	No trade data for 2009. no export data for 2000, 2003 and 2004.
Zambia:	No trade data for 2006, 2009, 2013 and 2014. no export data for 2000, 2002-2005, 2007-2008, 2010-2012 and 2015.
Zimbabwe:	No trade data for 2006, 2009 and 2016. no export data for 2001, 2003-2005, 2007, 2011-2015.
Madaqascar, Mauritius, South Africa, World:	no trade data for 2009.

Source: UNSD, Comtrade database.

1.5. Charts 1.2 and 1.3 show bilateral trade patterns between SADC countries and the Seychelles over the period 2000-2016. South Africa, Namibia and Eswatini have run a consistent trade surplus with the Seychelles over the period surveyed, while with Mauritius the trade balance is mixed. Gaps in trade data between the Seychelles and other SADC partners make it difficult to identify trends.

Chart 1.2 SADC (Botswana, Lesotho, Madagascar, Malawi, Mauritius, Mozambique): Trade with Seychelles and with world, 2000-2016



Botswana: No export with Seychelles for 2000, 2002, 2003, 2006, 2007 and 2012. no import from Seychelles for 2001.

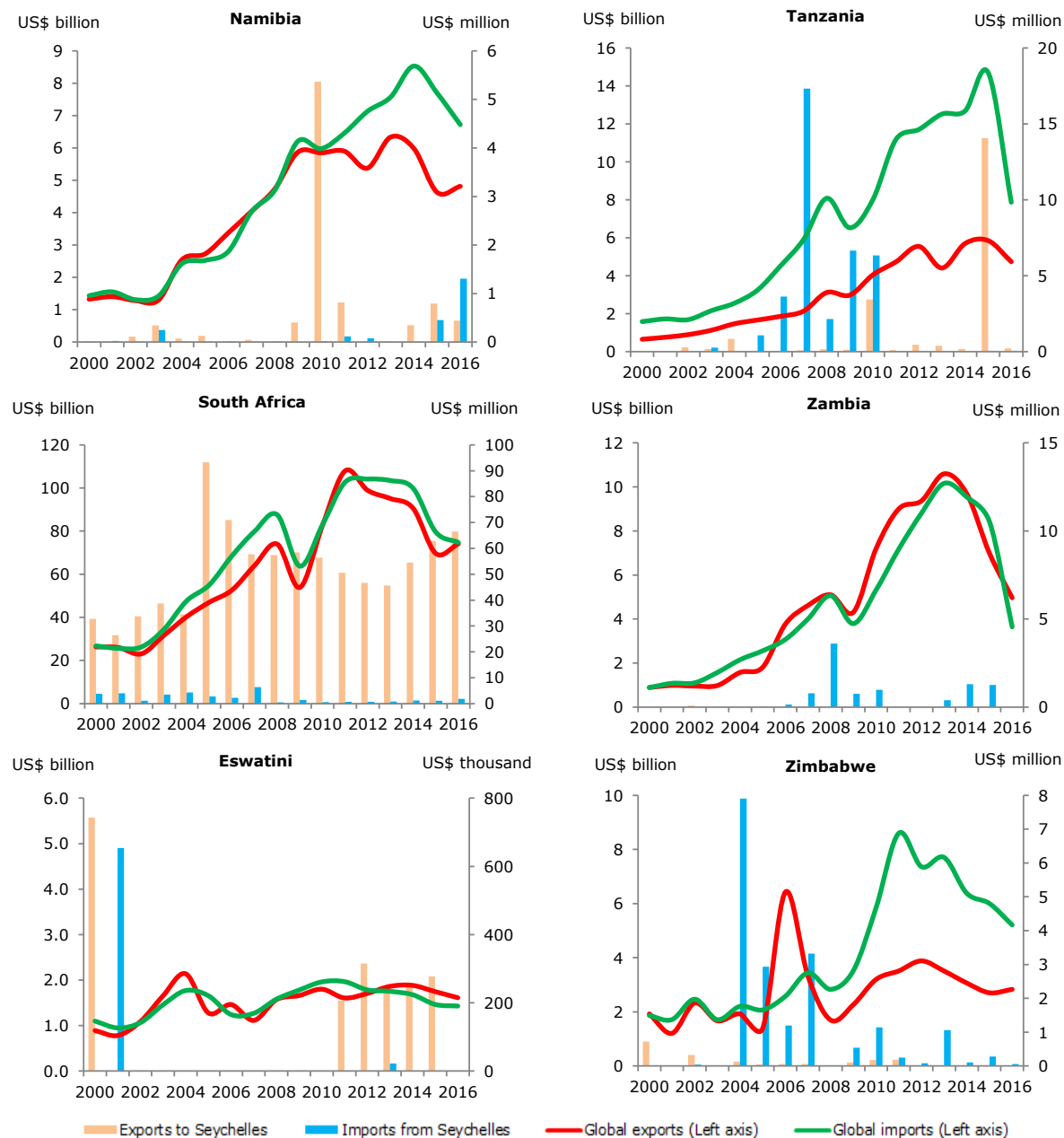
Lesotho: No bilateral trade data with Seychelles except 2003 (export to Seychelles).

Malawi: No export to Seychelles for 2006, 2008 and 2016. no import from Seychelles for 2000, 2001, 2009 and 2016.

Mozambique: No export to Seychelles for 2009, 2012, 2013 and 2014.

Source: UNSD, Comtrade database; World Bank, World Development Indicator; and ITC, TradeMap.

Chart 1.3 SADC (Namibia, South Africa, Eswatini, Tanzania, Zambia, Zimbabwe): Trade with Seychelles and with world, 2000-2016



Namibia: No imports from Seychelles for 2009 and 2013.

Eswatini: No bilateral trade for 2002-2010. no export to Seychelles for 2001 and 2016. no import from Seychelles for 2000, 2012, 2014, 2015 and 2016.

Zambia: No bilateral trade data for 2016. no exports to Seychelles for 2001, 2004-2008, 2013-2014 and 2016. no import data from Seychelles for 2002-2003, 2011.

Zimbabwe: No bilateral trade data for 2003. no exports to Seychelles for 2012-2013 and 2015-2016. no import from Seychelles for 2000 and 2008.

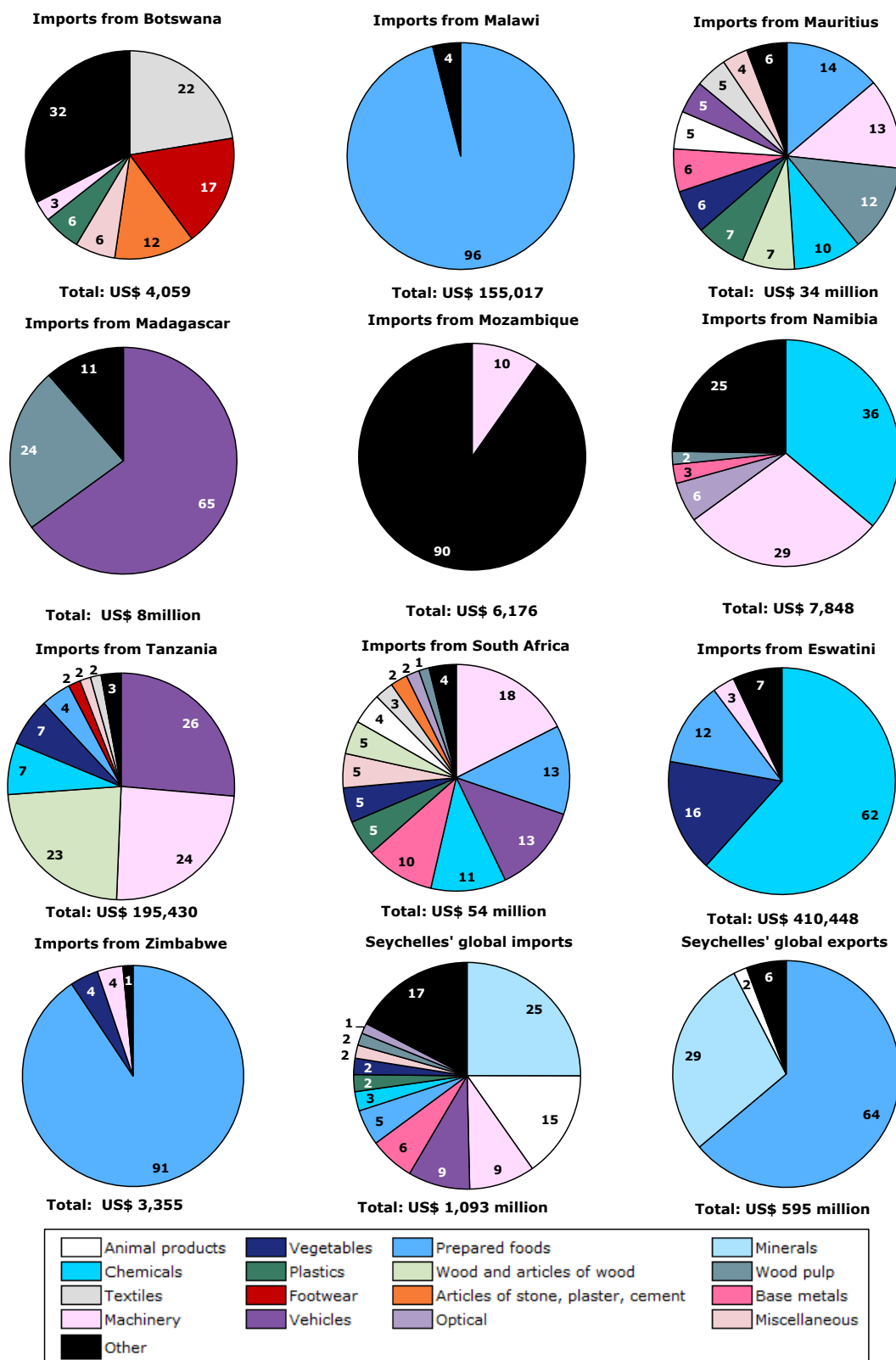
Source: UNSD, Comtrade database; World Bank, World Development Indicators; and ITC, TradeMap.

1.6. The commodity structure of trade of the Seychelles' imports from its SADC partners, as well as of the Seychelles' imports and exports to the world is shown in Chart 1.4 (based on the period 2012-2014) and Chart 1.5 (based on the period 2010-2012),² on the basis of HS section product categories. More than half of the Seychelles' imports from most of its SADC partners is composed of one or two commodities (e.g. prepared foods from Malawi and Zimbabwe, vehicles from Madagascar, chemicals from Eswatini and animal products from Lesotho), whereas imports from Mauritius and South Africa which account for the bulk of imports from SADC partners are more diverse.

1.7. The Seychelles' imports of prepared foodstuffs, machinery, wood pulp and chemicals accounted on average for 48.9% of its imports from Mauritius in 2012-2014, while imports of machinery, foodstuffs, vehicles and chemicals accounted on average for 53.6% of its imports from South Africa over the same period.

² For Lesotho and Zambia data were only available for 2010-2012.

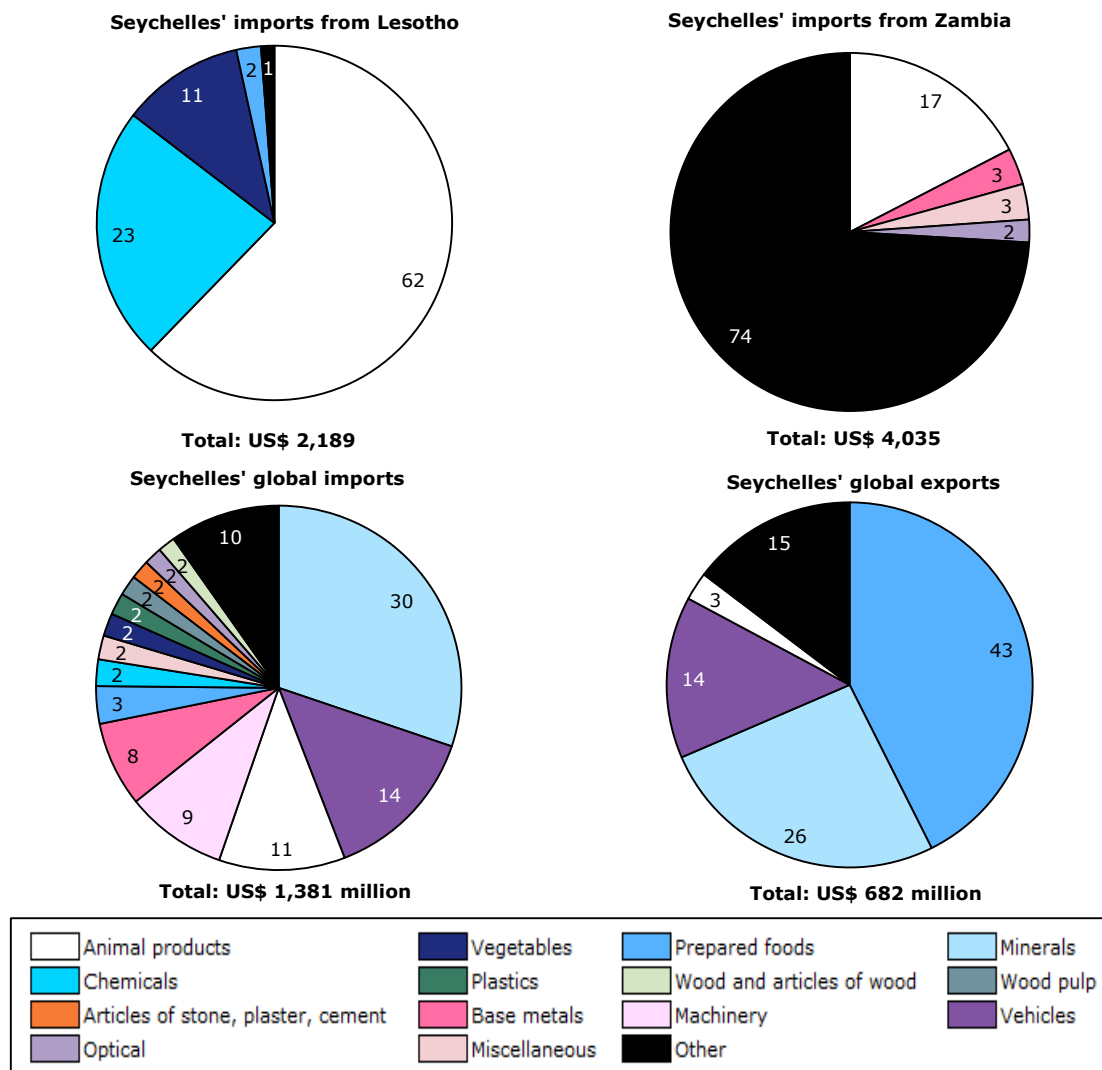
Chart 1.4 Seychelles' global trade and imports from Botswana, Malawi, Mauritius, Madagascar, Mozambique, Namibia, Tanzania, South Africa, Eswatini, and Zimbabwe: Product composition of merchandise trade, annual average (2012-2014)



Note: There are no import data from Malawi and Mozambique for 2013.

Source: UNSD, Comtrade database.

Chart 1.5 Seychelles' global trade and imports from Lesotho and Zambia: Product composition of merchandise trade, annual average (2010-2012)

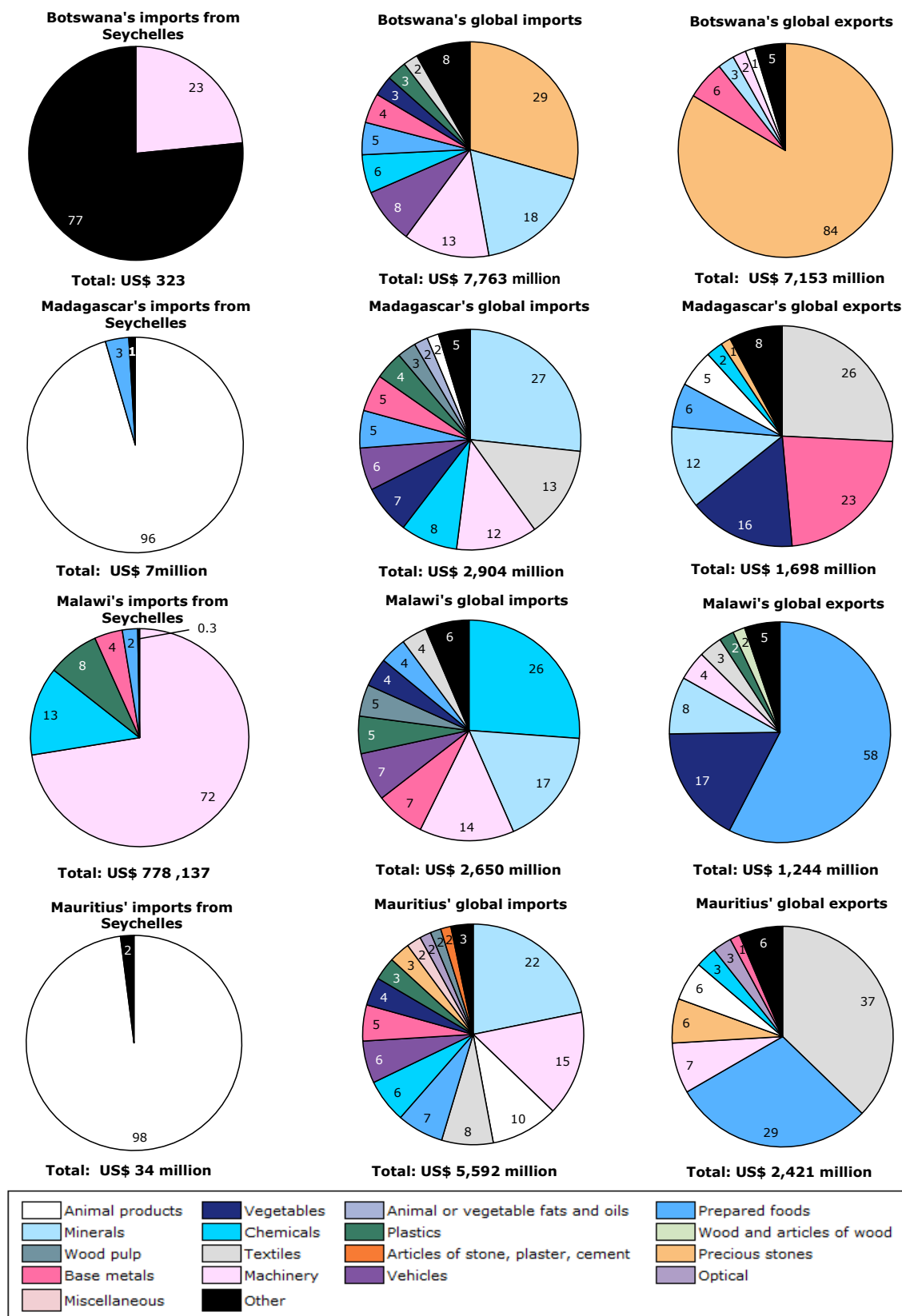


Note: There are no Seychelles' imports from Lesotho for 2012.

Source: UNSD, Comtrade database.

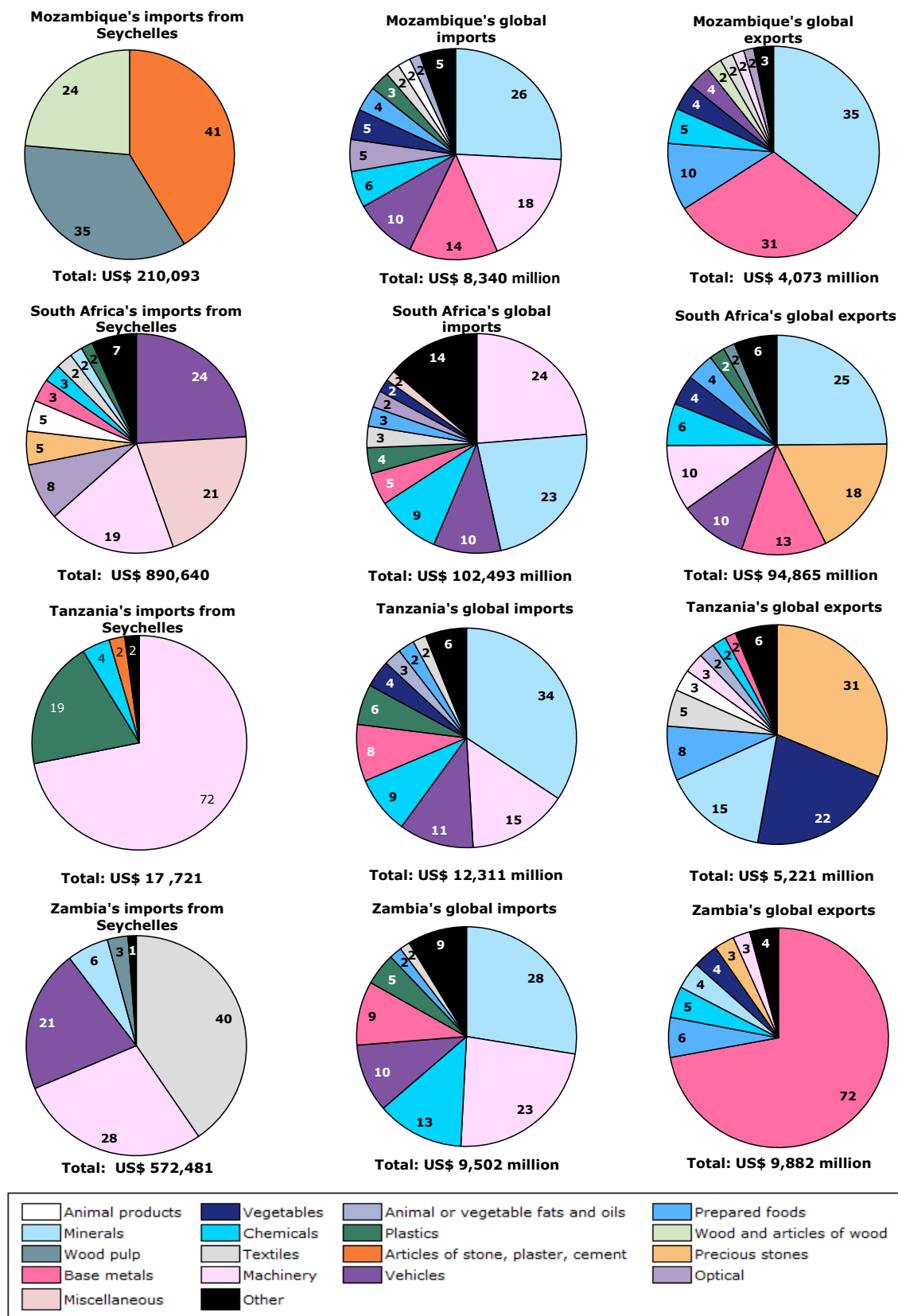
1.8. The commodity structure of trade of the SADC partners' imports from the Seychelles, as well as their imports and exports to the world is shown in Charts 1.6-1.8 (for the period 2012-2014), on the basis of HS section product categories. Mauritius is the largest importer of products from the Seychelles with imports averaging US\$34 million in 2012-2014 and composed almost entirely of animal products. Likewise Madagascar's imports from the Seychelles, averaging US\$7 million over the same period are composed almost entirely of animal products. For the other SADC partners' imports from the Seychelles the average trade volume over the period 2012-2014 averaged less than US\$1 million. Textiles, machinery and vehicles are among the most common products traded.

Chart 1.6 SADC (Botswana, Madagascar, Malawi, Mauritius) trade with Seychelles: Product composition of merchandise trade, annual average (2012-2014)



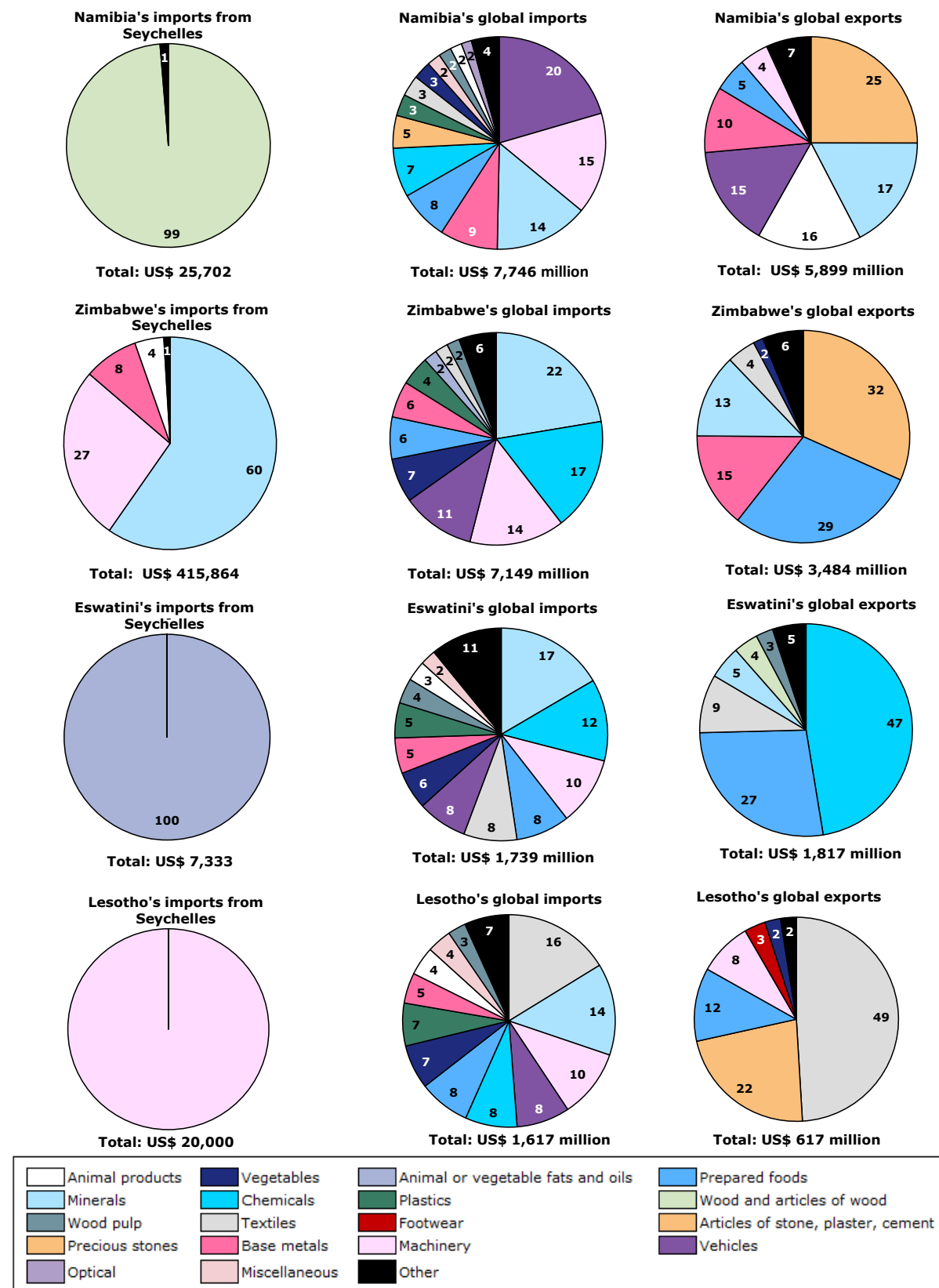
Source: UNSD, Comtrade database.

Chart 1.7 SADC (Mozambique, South Africa, Tanzania, Zambia) trade with Seychelles: Product composition of merchandise trade, annual average (2012-2014)



Source: UNSD, Comtrade database.

Chart 1.8 SADC (Namibia, Zimbabwe, Eswatini, Lesotho) trade with Seychelles: Product composition of merchandise trade, annual average (2012-2014)



Note: Lesotho's imports from Seychelles are for 2013 only.

Source: UNSD, Comtrade database and ITC, TradeMap.

2 CHARACTERISTIC ELEMENTS OF THE AGREEMENT

2.1 Background Information

2.1. The accession of the Seychelles to the SADC Trade Protocol (hereinafter "the Agreement") was signed on 1 April 2015 and entered into force on 25 May 2015. The Seychelles notified the WTO of its accession to the SADC Trade Protocol on 8 January 2016 under GATT Article XXIV:7(a).³

2.2. The text of the Instrument of Accession and the SADC trade protocol is available on the WTO website: <http://rtais.wto.org/UI/PublicShowMemberRTAIDCard.aspx?rtaid=948>.

2.3. The consideration of the SADC Trade Protocol as originally notified took place in the CRTA on 14 May 2007. Details of the trade liberalization scheduled among the original parties to the SADC Trade Protocol and a summary of its regulatory provisions can be found in the Factual Presentation distributed in document WT/REG176/4.

2.4. Modifications on trade-related issues made since that time include the following: the Protocol on the Tribunal and Rules thereof which was signed in 2000, entered into force in 2011; and the Protocol on Finance and Investment signed in 2006 entered into force in 2010. The Protocol on Trade in Services that was signed in 2012 is not yet in force.⁴ The SADC Secretariat has indicated that following the signing of the Protocol, negotiations commenced on the schedules of commitments covering six agreed prioritised sectors, i.e. communication, financial services, tourism, transport, construction and energy-related services of which the first four have been finalised. The agreed schedules will be presented to the SADC Committee of Ministers of Trade in July 2018 for adoption. The conclusion of the first round of negotiations under the Protocol on Trade in Services liberalisation programme is expected to pave the way for the ratification and implementation of the Protocol with a number of the outstanding Members expected to complete the process before the August 2018 SADC Summit meetings.

3 PROVISIONS ON TRADE IN GOODS

3.1 Import duties and charges, and quantitative restrictions

3.1.1 Liberalization of trade and tariff lines

3.1. Table 3.1 shows tariff and trade liberalization offered by the Seychelles under the Agreement. In 2015, 85.6% of the Seychelles' tariff lines were duty free on an MFN basis,⁵ corresponding to a range of between zero (Malawi) to 100% (Mozambique and Zambia) of its total imports from SADC partners (2012-2014). Following the Agreement's entry into force, the Seychelles liberalized an additional 6.1% of lines. Liberalization continues until 2026 at which point 97.5% of tariff lines will be duty free with a total of 141 lines remaining subject to duties. In the case of the Seychelles' imports from Malawi, Mauritius, South Africa, Tanzania and Zimbabwe the lines remaining dutiable account respectively for 100%, 2.6%, 7.1%, 0.1% and 98.5% of its average total imports from these countries for the period 2012-2014.

³ Document WT/REG368/N/1 dated 8 January 2016.

⁴ The Seychelles has indicated that for the Protocol on Trade in Services to come into force, it needs the ratification of two-thirds of SADC members. As of 1 December 2017, eight Member States namely Angola, the Democratic Republic of Congo, Madagascar, Malawi, Namibia, Tanzania, Zambia and Zimbabwe were yet to submit their instruments of ratification of the Protocol on Trade in Services. To date, there have been no new developments on the status of ratification of the Protocol. The Seychelles ratified the Protocol on Trade in Services in August 2016.

⁵ Of the 5,717 lines in the Seychelles' tariff, 98.9% are *ad valorem*, 56 lines are subject to specific duties and four to compound duties.

Table 3.1 Seychelles
Tariff elimination commitments under the Agreement and corresponding average trade

Duty phase-out period	Number of lines	% of total lines in tariff schedule	Value of imports in US\$	% of total imports	Value of imports In US\$	% of total imports	Value of imports In US\$	% of total imports
(2012-2014)								
			Botswana		Lesotho		Madagascar	
MFN 2015	4,895	85.6	1,077	41.2	-	-	7,107,237	98.3
2015	349	6.1	673	25.7	-	-	14,614	0.2
2017	41	0.7	0	0.0	-	-	18	0.0
2018	7	0.1	0	0.0	-	-	0	0.0
2023	237	4.1	866	33.1	-	-	107,234	1.5
2026	47	0.8	0	0.0	-	-	0	0.0
Remain dutiable	141	2.5	0	0.0	-	-	74	0.0
Total*	5,717	100.0	2,616	100.0	-	-	7,229,177	100.0
			Malawi		Mauritius		Mozambique	
MFN 2015	4,895	85.6	0	0.0	29,851,485	88.2	577	100.0
2015	349	6.1	0	0.0	1,286,306	3.8	0	0.0
2017	41	0.7	0	0.0	19,977	0.1	0	0.0
2018	7	0.1	0	0.0	412	0.0	0	0.0
2023	237	4.1	0	0.0	1,369,753	4.0	0	0.0
2026	47	0.8	0	0.0	465,274	1.4	0	0.0
Remain dutiable	141	2.5	150,522	100.0	866,245	2.6	0	0.0
Total*	5,717	100.0	150,522	100.0	33,859,452	100.0	577	100.0
			Namibia		South Africa		Eswatini	
MFN 2015	4,895	85.6	17,239	13.3	41,707,066	82.4	335,154	99.6
2015	349	6.1	112,861	86.7	3,307,921	6.5	717	0.2
2017	41	0.7	0	0.0	62,295	0.1	0	0.0
2018	7	0.1	0	0.0	4,411	0.0	0	0.0
2023	237	4.1	0	0.0	683,475	1.4	518	0.2
2026	47	0.8	0	0.0	1,244,557	2.5	0	0.0
Remain dutiable	141	2.5	0	0.0	3,577,307	7.1	6	0.0
Total*	5,717	100.0	130,100	100.0	50,587,031	100.0	336,396	100.0
			Tanzania		Zambia		Zimbabwe	
MFN 2015	4,895	85.6	204,497	84.8	420	100.0	534	1.4
2015	349	6.1	31,556	13.1	0	0.0	57	0.1
2017	41	0.7	0	0.0	0	0.0	0	0.0
2018	7	0.1	0	0.0	0	0.0	0	0.0
2023	237	4.1	4,715	2.0	0	0.0	0	0.0
2026	47	0.8	0	0.0	0	0.0	0	0.0
Remain dutiable	141	2.5	324	0.1	0	0.0	37,851	98.5
Total*	5,717	100.0	241,092	100.0	420	100.0	38,443	100.0

* Added 83 tariff lines to complete the products under the HS 2002 nomenclature: 70 tariff lines are already duty-free at the MFN 2015 level and the remaining 13 tariff lines are dutiable. 80 tariff lines are treated as Category A (immediate liberalization), 2 as Category C and 1 as Category E.

Note: No import data from Lesotho for 2012-2014.
Based on the HS 2002 nomenclature.

Source: WTO estimates based on data provided by the Seychelles authorities.

3.2. Table 3.3 shows tariff and trade liberalization offered by SADC countries to the Seychelles under the Agreement. The Seychelles immediately benefited from the preferences applied by SADC countries to other SADC partners under the original SADC Trade Protocol without any phase-in period.

3.3. In 2015, 55.7% of SACU's tariff lines⁶ were duty free on an MFN basis,⁷ accounting for 100% (Botswana), 0.1% (Namibia), 87.6% (South Africa) and zero % (Eswatini) of total imports from

⁶ Botswana, Namibia, South Africa and Eswatini. Lesotho's tariff is slightly different from its SACU partners and is reported separately.

the Seychelles (2012-2014). Following the accession of the Seychelles to the Agreement, SACU liberalized an additional 44.1% of its tariff. Ten lines remain subject to duties.

3.4. In 2015, 55.7% of Lesotho's tariff lines were duty-free on an MFN basis,⁸ and a further 44.1% of tariffs were liberalized upon the Seychelles' accession to the Agreement. No bilateral import data between Lesotho and the Seychelles is available.

3.5. In 2015, 31.7% of Malawi's tariff lines were duty free on an MFN basis,⁹ accounting for 93.1% of its total imports from the Seychelles (2012-2014). Following the accession of the Seychelles to the Agreement, Malawi liberalized an additional 68.1% of lines, which accounted for 6.9% of its total imports from the Seychelles (2012-2014). 13 lines remain subject to duties.

3.6. In 2015, 88.8% of Mauritius' tariff lines were duty free on an MFN basis,¹⁰ accounting for 99.7% of its total imports from the Seychelles (2012-2014). Following the accession of the Seychelles to the Agreement, Mauritius liberalized an additional 11.2% of lines. No tariff lines remain subject to duties.

3.7. In 2015, 3.6% of Mozambique's tariff lines were duty free on an MFN basis,¹¹ accounting for 31.2% of its total imports from the Seychelles (2012-2014). Following the accession of the Seychelles to the Agreement, Mozambique liberalized an additional 90.2% of lines, accounting for 68.8% of its total imports from the Seychelles (2012-2014). 324 lines or 6.2% of its tariff remain subject to duties.

3.8. In 2015, 36.9% of Tanzania's tariff lines were duty free on an MFN basis,¹² accounting for 75% of its total imports from the Seychelles (2012-2014). Following the accession of the Seychelles to the Agreement, Tanzania liberalized an additional 62% of lines. 57 lines remain subject to duties. The SADC Secretariat has indicated that Tanzania reintroduced duties on SADC sugar in 2011 that are still in place. Since 2015 Tanzania has received special dispensation from the SADC Committee of Ministers of Trade to apply the duties on sugar till August 2020. Table 3.2 shows the sugar products on which Tanzania reintroduced duties and the corresponding MFN rates.

Table 3.2 Tanzania's Sugar products under HS Heading 1701

Tariff line	Description	MFN 2015
1701	Cane or beet sugar and chemically pure sucrose, in solid form.	
	- Raw sugar not containing added flavouring or colouring matter :	
170112	-- Beet sugar	
17011210	--- Jaggery	100 % or \$460/MT whichever is higher
17011290	--- Other	100 % or \$460/MT whichever is higher
170113	-- Cane sugar specified in Subheading Note 2 to this Chapter	
17011310	--- Jaggery	100 % or \$460/MT whichever is higher
17011390	--- Other	100 % or \$460/MT whichever is higher
170114	-- Other cane sugar	
17011410	--- Jaggery	100 % or \$460/MT whichever is higher
17011490	--- Other	100 % or \$460/MT whichever is higher
170191	- Other :	

⁷ SACU's tariff (Botswana, Namibia, South Africa and Eswatini) is composed of 7,413 lines, of which 96.2% are *ad valorem*, 168 are subject to specific duties and 115 to mixed duties.

⁸ Lesotho's tariff is composed of 7,428 lines, of which 96.2% are *ad valorem*, 168 are subject to specific duties and 115 to mixed duties. Lesotho's tariff differs slightly from that of its SACU partners.

⁹ Malawi's tariff is composed of 5,670 lines, of which 99.9% are *ad valorem*. One tariff line has no rate.

¹⁰ Mauritius' tariff is composed of 6,348 lines, of which 95.2% are *ad valorem*, and 303 lines are subject to specific duties.

¹¹ Mozambique's tariff is composed of 5,437 lines, all of which 99.8% are *ad valorem*. 11 lines are subject to mixed duties.

¹² Tanzania's tariff is composed of 5,670 lines, of which 99.9% are *ad valorem*. One tariff line has no rate.

Tariff line	Description	MFN 2015
17019100	-- Containing added flavouring or colouring matter	100 % or \$460/MT whichever is higher
170199	-- Other	
17019910	--- Sugar for industrial use	100 % or \$460/MT whichever is higher
17019990	--- Other	100 % or \$460/MT whichever is higher

Source: WTO-IDB.

3.9. In 2015, 30% of Zambia's tariff lines were duty free on an MFN basis,¹³ accounting for 21.5% of its total imports from the Seychelles (2012-2014). Following the accession of the Seychelles to the Agreement, Zambia liberalized an additional 67% of lines. 199 lines, accounting for 3% of its tariff remain subject to duties.

3.10. In 2015, 10.1% of Zimbabwe's tariff lines were duty free on an MFN basis,¹⁴ accounting for 22.9% of its total imports from the Seychelles (2012-2014). The SADC Secretariat has indicated that Zimbabwe last made tariff reductions in 2008 and did not proceed beyond that to cover Category "C" (sensitive products) under its SADC offer which was supposed to be eliminated by end 2012. Subsequent to that duties were reintroduced to mitigate economic challenges. The matter is still before SADC Ministers of Trade for consideration and determination.

**Table 3.3 SADC
Tariff elimination commitments under the Agreement and corresponding average**

SADC Members	Duty phase-out period	Number of lines ^a	% of total lines in tariff schedule	Average imports from Seychelles (2012-2014)	
				Value of imports (US\$ '000)	% imports
Botswana	MFN duty free (2015)	4,132	55.7	7.6	100.0
	2015	3,271	44.1	0.0	0.0
	Remain dutiable	10	0.1	0.0	0.0
	Total	7,413	100.0	7.6	100.0
Lesotho	MFN duty free (2015)	4,140	55.7	-	-
	2015	3,278	44.1	-	-
	Remain dutiable	10	0.1	-	-
	Total	7,428	100.0	-	-
Malawi	MFN duty free (2015)	1,796	31.7	724.2	93.1
	2015	3,860	68.1	53.9	6.9
	Remain dutiable	13	0.2	0.0	0.0
	Total	5,670^b	100.0	778.1	100.0
Mauritius	MFN duty free (2015)	5,639	88.8	33,774.8	99.7
	2015	709	11.2	113.6	0.3
	Total	6,348	100.0	33,888.4	100.0
Mozambique	MFN duty free (2016)	186	3.6	65.5	31.2
	2016	4,688	90.2	144.6	68.8
	Remain dutiable	324	6.2	0.0	0.0
	Total	5,198	100.0	210.1	100.0
Namibia	MFN duty free (2015)	4,132	55.7	0.0	0.1
	2015	3,271	44.1	38.0	99.9
	Remain dutiable	10	0.1	0.0	0.0
	Total	7,413	100.0	38.1	100.0
South Africa	MFN duty free (2015)	4,132	55.7	757.9	87.6
	2015	3,271	44.1	107.1	12.4
	Remain dutiable	10	0.1	0.0	0.0
	Total	7,413	100.0	865.0	100.0
Eswatini	MFN duty free (2015)	4,132	55.7	0.0	0.0
	2015	3,271	44.1	7.5	100.0
	Remain dutiable	10	0.1	0.0	0.0
	Total	7,413	100.0	7.5	100.0

¹³ Zambia's tariff is composed of 6,181 lines, of which 97.6% are *ad valorem*. 142 lines are subject to mixed duties and five lines have no rate.

¹⁴ Zimbabwe's tariff is composed of 6,140 lines, of which 92.6% are *ad valorem*. 70 tariff lines are subject to specific duties, 331 to compound duties and 58 to mixed duties.

SADC Members	Duty phase-out period	Number of lines ^a	% of total lines in tariff schedule	Average imports from Seychelles (2012-2014)	
				Value of imports (US\$ '000)	% imports
Tanzania	MFN duty free (2015)	2,008	36.9	13.3	75.0
	2015	3,372	62.0	4.4	25.0
	Remain dutiable	57	1.0	0.0	0.0
	Total	5,437	100.0	17.7	100.0
Zambia	MFN duty free (2015)	1,837	30	122.9	21.5
	2015	4,140	67	448.9	78.5
	Remain dutiable	199	3	0.0	0.0
	Total	6,181^c	100	571.8	100.0
Zimbabwe (not yet implemented)	MFN duty free (2015)	622	10.1	94.8	22.9
	2015	5,378	87.6	301.3	72.7
	Remain dutiable	140	2.3	18.4	4.4
	Total	6,140	100.0	414.5	100.0

a HS chapters 1-97 only.

b Malawi: no duty provided for one tariff line (63080000) but included in the total count for completeness of the tariff lines under the HS 2012 nomenclature.

c Zambia: 5 tariff lines where duties are not provided are included in the total count for completeness of the tariff lines under the HS 2012 nomenclature.

- No available import data for Lesotho.

For Mozambique data was only available for 2016.

Based from HS 2012 nomenclature except Mozambique which is based on HS 2007 nomenclature.

Source: Trade Analysis Information System (TRAINS), UNSD, Comtrade, WTO-IDB databases and import data from authorities of Botswana, Eswatini, and Zimbabwe.

3.11. Table 3.4 shows the Seychelles' tariff liberalization by HS Section. Most liberalization takes place in 2015 and 2023. The 140 products remaining dutiable fall in a range of HS Sections, and include both agricultural and industrial goods. The average final tariff on dutiable products for agricultural goods ranges from 25% to 126.9%, while for industrial products the range is 23.1% to 100%.

Table 3.4 Seychelles: Tariff elimination under the Agreement, by HS Section

HS Section	MFN average %	No. of lines	No. of duty-free lines in MFN 2015	Duty-free lines under the Agreement					Remain dutiable	Avg. Final Tariff (Dutiable)
				2015	2017	2018	2023	2026		
I	9.2	244	154	63	5		4	10	8	25.0
II	5.9	316	220	78			4		14	26.1
III	0.0	46	46							
IV	6.3	350	237	19			35	1	58	126.9
V	0.3	166	164			1			1	25.0
VI	0.5	843	817	20				6		
VII	5.7	235	210	24					1	100.0
VIII	4.4	74	61	13						
IX	1.2	87	82	2			2		1	25.0
X	1.1	198	193	2			3			
XI	7.2	863	553	79	36	1	189		5	25.0
XII	5.5	55	41	14						
XIII	3.0	144	126	10				4	4	25.0
XIV	0.0	53	53							
XV	0.1	591	589	1					1	25.0
XVI	0.2	827	817	9		1				
XVII	7.6	213	129	6		4		26	48	23.1
XVIII	0.0	244	244							
XIX	0.0	21	21							

HS Section	MFN average %	No. of lines	No. of duty-free lines in MFN 2015	Duty-free lines under the Agreement					Remain dutiable	Avg. Final Tariff (Dutiable)
				2015	2017	2018	2023	2026		
XX	1.0	140	131	9						
XXI	0.0	7	7							
Total*	3.1	5,717	4,895	349	41	7	237	47	141	34.0

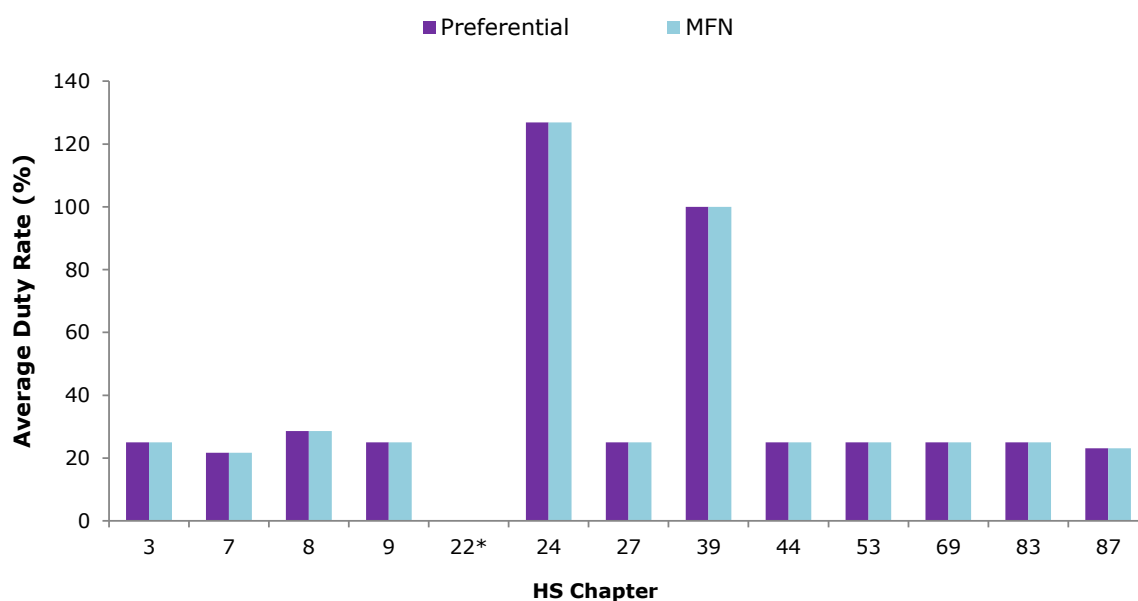
* Added 83 tariff lines to complete the products under the HS 2002 nomenclature: 70 tariff lines are already duty-free at the MFN 2015 level and the remaining 13 tariff lines are dutiable. 80 tariff lines are treated as Category A (immediate liberalization), 2 as Category C and 1 as Category E.

Note: For the calculation of averages, specific rates are excluded and the *ad valorem* part of compound duties are included. Based on the HS 2002 nomenclature.

Source: WTO estimates based on data from Seychelles authorities.

3.12. Chart 3.1 compares for the Seychelles the average of dutiable rates for products subject to duties at the end of the implementation period with the applicable MFN duties. Average tariffs range from 21.7% in HS Chapter 7 to 126.9% in HS Chapter 24. In all cases the preferential duties are the same as MFN rates indicating that no preferential liberalization of these lines has taken place.

Chart 3.1 Seychelles: Average of dutiable rates, by HS Chapter



Note: Based on the HS 2002 nomenclature.

* HS Chapter 22 contains specific duties only.

Source: WTO estimates based on data from Seychelles authorities.

3.13. Tables 3.5-3.12 show SADC countries' tariff liberalization offered to the Seychelles by HS Section. For SACU countries (Botswana, Namibia, South Africa and Eswatini), the ten lines remaining dutiable fall in two HS Sections and include both agricultural and industrial goods (Table 3.5). The average final tariff on dutiable products for industrial goods is 46.7%. The agricultural products are subject to specific duties only.

Table 3.5 SACU (Botswana, Namibia, South Africa, Eswatini) member states: Tariff elimination under the Agreement, by HS Section

HS Section	MFN average %	No. of lines ^a	No. of duty-free lines in MFN 2015	Duty-free lines under the Agreement	Remain dutiable	Avg. Final Tariff (Dutiable)
				2015		
I	14.0	454	276	178		
II	6.9	414	187	227		
III	7.5	69	17	52		
IV	16.5	416	84	327	5	-
V	1.7	189	156	33		
VI	2.1	1,150	967	183		
VII	7.4	477	222	255		
VIII	11.1	92	42	50		
IX	7.3	113	60	53		
X	3.8	201	143	58		
XI	22.5	987	175	807	5	46.7
XII	21.0	82	15	67		
XIII	7.4	218	89	129		
XIV	4.3	60	47	13		
XV	5.1	755	468	287		
XVI	3.8	1,046	767	279		
XVII	9.6	244	119	125		
XVIII	0.3	215	210	5		
XIX	13.4	66	7	59		
XX	10.3	158	74	84		
XXI	0.0	7	7			
Total	8.5	7,413	4,132	3,271	10	46.7

a HS chapters 1-97 only.

- Specific duties only.

Note: For the calculation of averages, specific rates are excluded and the *ad valorem* part of alternate rates are included. Based on HS 2012 nomenclature.

Source: WTO-IDB.

3.14. For Lesotho, whose tariff differs slightly from its SACU partners, the ten lines remaining dutiable fall in two HS Sections and include both agricultural and industrial goods (Table 3.6). The average final tariff on dutiable products for industrial goods is 46.7%. The agricultural products are subject to specific duties only.

Table 3.6 Lesotho: Tariff elimination under the Agreement, by HS Section

HS Section	MFN average %	No. of lines ^a	No. of duty-free lines in MFN 2015	Duty-free lines under the Agreement	Remain dutiable	Avg. Final Tariff (Dutiable)
				2015		
I	14.5	465	276	189		
II	6.9	414	187	227		
III	7.5	69	17	52		
IV	16.5	417	84	328	5	-
V	1.7	189	156	33		
VI	2.1	1,150	967	183		
VII	7.4	477	222	255		
VIII	11.1	92	42	50		
IX	7.3	113	60	53		
X	3.6	201	149	52		
XI	22.5	987	175	807	5	46.7
XII	21.0	82	15	67		
XIII	7.4	218	89	129		
XIV	4.3	60	47	13		
XV	5.2	756	468	288		
XVI	3.8	1,048	769	279		
XVII	9.6	244	119	125		
XVIII	0.3	215	210	5		
XIX	13.4	66	7	59		

HS Section	MFN average %	No. of lines ^a	No. of duty-free lines in MFN 2015	Duty-free lines under the Agreement	Remain dutiable	Avg. Final Tariff (Dutiable)
				2015		
XX	10.3	158	74	84		
XXI	0.0	7	7			
Total	8.6	7,428	4,140	3,278	10	46.7

a HS chapters 1-97 only.

- Specific duties only.

Note: For the calculation of averages, specific rates are excluded and the *ad valorem* part of alternate rates are included. Based on HS 2012 nomenclature.

Source: WTO-IDB.

3.15. For Malawi, the 13 lines remaining dutiable fall in a number of HS Sections and include both agricultural and industrial goods (Table 3.7). The average final tariff on dutiable products for industrial goods ranges from 2% to 25%, while for agricultural goods the average final tariff on dutiable products ranges from 5% to 17.5%.

Table 3.7 Malawi: Tariff elimination under the Agreement, by HS Section

HS Section	MFN average %	No. of lines	No. of duty-free lines in MFN 2015	Duty-free lines under the Agreement	Remain dutiable	Avg. Final Tariff (Dutiable)
				2015		
I	15.4	338	7	329	2	17.5
II	18.1	327	42	284	1	5.0
III	17.2	48		48		
IV	25.7	269	15	254		
V	7.6	160	37	122	1	20.0
VI	3.5	802	651	151		
VII	10.6	225	76	149		
VIII	21.7	69		69		
IX	17.8	96	2	92	2	15.0
X	12.0	150	16	133	1	25.0
XI	19.8	814	89	723	1	5.0
XII	24.7	52		52		
XIII	15.5	156	9	147		
XIV	17.3	56	1	55		
XV	12.3	603	63	539	1	10.0
XVI	5.2	903	601	300	2	2.0
XVII	13.1	225	68	157		
XVIII	10.6	227	112	115		
XIX	22.6	19		19		
XX	23.0	124	7	116	1	25.0
XXI	10.0	7		6	1	10.0
Total	12.7	5,670^a	1,796	3,860	13	13.0

a No duty provided for one tariff line (63080000) but included in the total count for completeness of the tariff lines under the HS 2012 nomenclature.
Based on HS 2012 nomenclature.

Source: WTO-IDB.

3.16. For Mauritius, all tariff lines were liberalized upon accession by the Seychelles to the Agreement (Table 3.8).

Table 3.8 Mauritius: Tariff elimination under the Agreement, by HS Section

HS Section	MFN average %	No. of lines ^a	No. of duty-free lines in MFN 2015	Duty-free lines under the Agreement	Remain dutiable
				2015	
I	0.0	344	342	2	-
II	0.7	317	298	19	-
III	2.4	50	39	11	-
IV	3.7	330	248	82	-
V	0.2	164	162	2	-
VI	0.3	864	847	17	-

HS Section	MFN average %	No. of lines ^a	No. of duty-free lines in MFN 2015	Duty-free lines under the Agreement	Remain dutiable
				2015	
VII	1.4	245	223	22	-
VIII	3.3	72	64	8	-
IX	2.1	101	86	15	-
X	2.8	164	142	22	-
XI	0.6	1,088	758	330	-
XII	1.5	49	44	5	-
XIII	3.1	169	134	35	-
XIV	0.0	55	55		-
XV	0.9	634	596	38	-
XVI	0.7	838	810	28	-
XVII	0.4	435	420	15	-
XVIII	0.0	221	221		-
XIX	0.0	20	20		-
XX	7.0	181	123	58	-
XXI	0.0	7	7		-
Total	1.1	6,648	5,639	709	0

a HS chapters 1-97 only.
Based on HS 2012 nomenclature.

Source: WTO-IDB.

3.17. For Mozambique, the 324 lines remaining dutiable fall in a number of HS Sections and include both agricultural and industrial goods (Table 3.9). The average final tariff on dutiable products for industrial goods ranges from 5% to 20%, while for agricultural goods the average final tariff on dutiable products ranges from 13.3% to 14.9%.

Table 3.9 Mozambique: Tariff elimination under the Agreement, by HS Section

HS Section	MFN average %	No. of lines	No. of duty-free lines in MFN 2016	Duty-free lines under the Agreement	Remain dutiable	Avg. Final Tariff (Dutiable)
				2016		
I	17.6	247	4	198	45	14.9
II	13.2	285		257	28	14.1
III	10.4	47		31	16	13.3
IV	16.3	204	2	188	14	13.4
V	4.0	166	1	161	4	6.3
VI	4.6	792	98	682	12	11.5
VII	8.4	227	3	212	12	13.1
VIII	10.8	69		69		
IX	9.1	95		93	2	13.8
X	9.5	145	6	139		
XI	15.7	804	34	666	104	15.0
XII	16.3	54		54		
XIII	9.3	143	1	137	5	7.5
XIV	12.5	53		53		
XV	7.5	572	1	537	34	7.3
XVI	7.0	779	18	748	13	11.7
XVII	7.5	150	14	125	11	8.9
XVIII	10.1	217		216	1	5.0
XIX	20.0	20			20	20.0
XX	16.4	122	4	115	3	13.3
XXI	17.5	7		7		
Total	10.0	5,198	186	4,688	324	13.4

Note: Based on HS 2007 nomenclature. Data for 2015 was not available.

Source: WTO-IDB.

3.18. For Tanzania, the 57 lines remaining dutiable fall in a number of HS Sections and include both agricultural and industrial goods (Table 3.10). The average final tariff on dutiable products for industrial goods ranges from 10% to 25%, while for agricultural goods the average final tariff on dutiable products ranges from 22% to 25%.

Table 3.10 Tanzania: Tariff elimination under the Agreement, by HS Section

HS Section	MFN average%	No. of lines	No. of duty-free lines in MFN 2015	Duty-free lines under the Agreement	Remain dutiable	Avg. Final Tariff (Dutiable)
				2016		
I	25.5	347	15	325	7	25.0
II	20.3	307	38	269		
III	14.0	52	12	40		
IV	23.7	229	9	210	10	22.0
V	4.8	171	109	62		
VI	3.0	815	676	138	1	10.0
VII	10.7	242	87	155		
VIII	14.3	69	5	64		
IX	16.3	94	22	72		
X	11.8	153	45	87	21	18.6
XI	20.8	810	63	747		
XII	21.9	47	1	46		
XIII	17.1	148	18	130		
XIV	22.4	57	6	51		
XV	10.2	575	201	374		
XVI	6.0	791	482	309		
XVII	7.0	168	102	66		
XVIII	8.8	212	112	100		
XIX	25.0	18			18	25.0
XX	22.6	125	5	120		
XXI	25.0	7		7		
Total	12.9	5,437	2,008	3,372	57	21.8

Note: For the calculation of averages, specific rates are excluded and the *ad valorem* part of alternate rates are included.

Based on HS 2012 nomenclature.

Source: Trade Analysis Information System (TRAINS).

3.19. For Zambia, the 199 lines remaining dutiable fall in a number of HS Sections and include both agricultural and industrial goods (Table 3.11). The average final tariff on dutiable products for industrial goods ranges from 10% to 25%, while for agricultural goods the average final tariff on dutiable products ranges from 21.7% to 25%.

Table 3.11 Zambia: Tariff elimination under the Agreement, by HS Section

HS Section	MFN average %	No. of lines ^a	No. of duty-free lines in MFN 2015	Duty-free lines under the Agreement	Remain dutiable	Avg. Final Tariff (Dutiable)
				2015		
I	21.3	365	6	334	24	22.5
II	19.8	374	1	351	18	21.7
III	14.6	54	4	50		
IV	21.1	229	4	224	1	25.0
V	9.2	168	12	156		
VI	5.3	1,107	721	367	19	15.5
VII	10.0	465	239	224	2	25.0
VIII	19.6	69		61	8	15.0
IX	22.3	101	4	80	17	24.4
X	11.1	154	20	134		
XI	17.6	901	67	762	72	22.1
XII	23.3	49	1	48		
XIII	14.4	143		136	7	17.9
XIV	19.1	57	1	55	1	15.0
XV	11.7	602	153	447	2	10.0
XVI	7.4	780	419	356	5	17.0
XVII	7.8	167	78	89		
XVIII	11.6	243	94	146	3	15.0
XIX	18.5	20			20	18.5

HS Section	MFN average %	No. of lines ^a	No. of duty-free lines in MFN 2015	Duty-free lines under the Agreement	Remain dutiable	Avg. Final Tariff (Dutiable)
				2015		
XX	21.2	125	6	119		
XXI	1.9	8	7	1		
Total	12.7	6,181^b	1,837	4,140	199	20.5

a HS chapters 1-97 only.

b 5 tariff lines where duties are not provided are included in the total count for tariff line completeness.
For the calculation of averages, specific rates are excluded and the *ad valorem* part of alternate rates are included.

Based on HS 2012 nomenclature.

Source: WTO-IDB.

3.20. For Zimbabwe, the 140 lines remaining dutiable fall in a number of HS Sections and include both agricultural and industrial goods (Table 3.12). The average final tariff on dutiable products for industrial goods ranges from 5% to 22.5%, while for agricultural goods the average final tariff on dutiable products ranges from 5% to 22.5%.

Table 3.12 Zimbabwe: Tariff elimination under the Agreement, by HS Section

HS Section	MFN average %	No. of lines ^a	No. of duty-free lines in MFN 2015	Duty-free lines under the Agreement	Remain dutiable	Avg. Final Tariff (Dutiable)
				2015		
I	17.9	483	171	291	21	17.4
II	20.1	335	31	295	9	11.1
III	17.2	63		62	1	5.0
IV	37.1	353	1	348	4	22.5
V	8.0	172	11	150	11	11.8
VI	7.1	831	47	772	12	5.0
VII	12.6	277	6	270	1	5.0
VIII	22.9	70		70		
IX	20.2	104		101	3	11.7
X	14.6	186	7	177	2	12.5
XI	20.0	897	3	889	5	13.0
XII	34.2	48		47	1	10.0
XIII	21.0	148		147	1	15.0
XIV	15.3	58	1	57		
XV	13.8	630		623	7	7.1
XVI	9.1	868	290	575	3	16.7
XVII	15.1	201	21	123	57	11.7
XVIII	9.1	246	32	214		
XIX	14.0	21		21		
XX	27.6	142	1	139	2	22.5
XXI	20.0	7		7		
Total	15.5	6,140	622	5,378	140	12.2

a HS chapters 1-97 only.

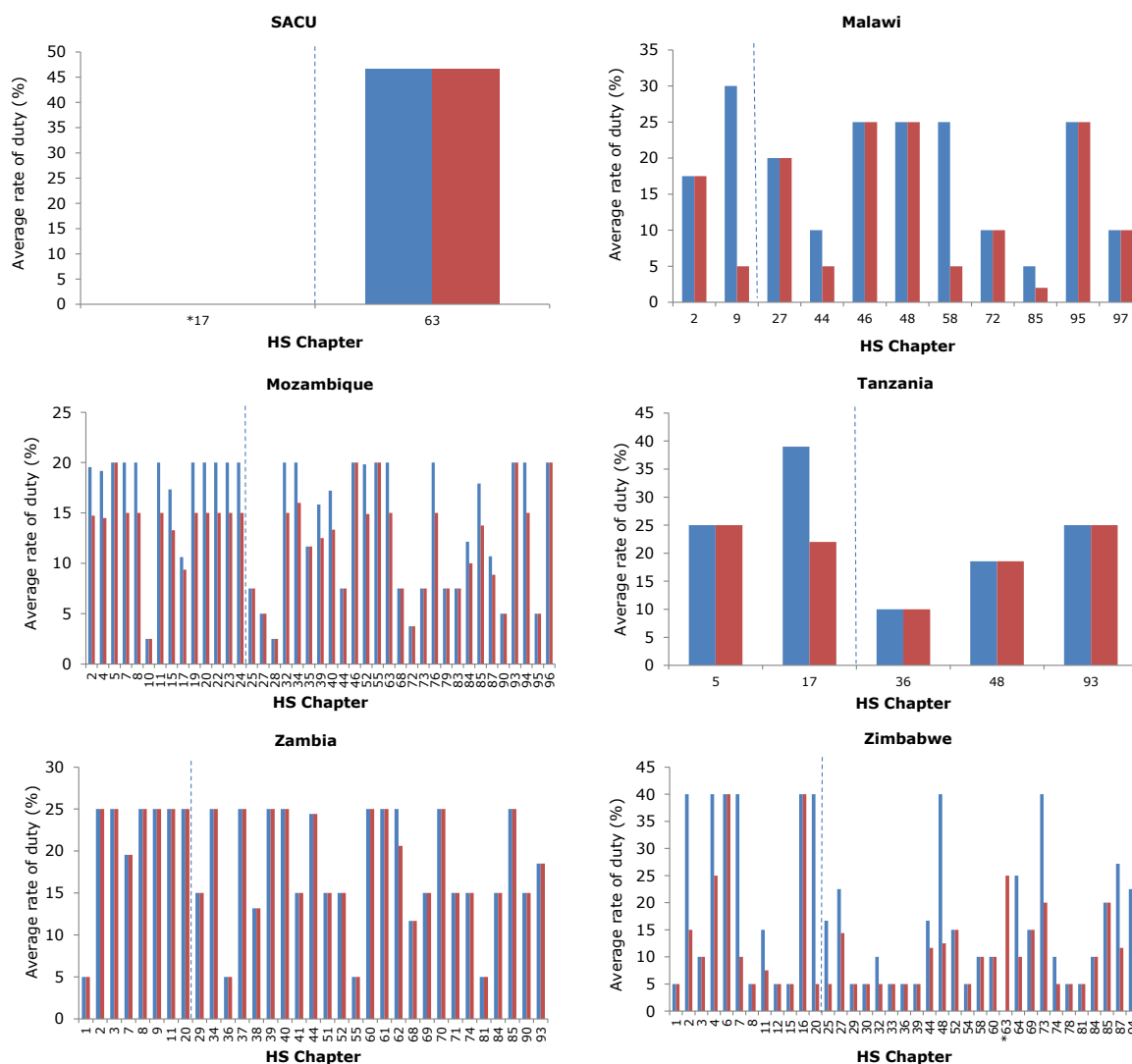
Based on HS 2012 nomenclature.

Source: WTO-IDB.

3.21. Chart 3.2 compares for SADC countries the average of dutiable rates for products subject to duties at the end of the implementation period with the applicable MFN duties for imports from the Seychelles, by HS Chapter. For SACU countries, the average remaining dutiable rates on products of HS Chapter 63 are the same as the MFN rate indicating that no preferential liberalization of these lines has taken place.

3.22. In the case of Malawi, duty reductions have taken place on the preferential rates offered to the Seychelles in HS Chapters 9, 44, 58 and 85. In the case of Mozambique, preferential duties are lower than MFN duties in a number of HS Chapters indicating that duty reductions have taken place on a number of tariff lines. Tanzania has reduced preferential duties for the Seychelles in HS Chapter 17. Zambia has reduced preferential duties for the Seychelles in HS Chapter 62, while Zimbabwe has reduced preferential duties applicable to the Seychelles in a number of HS Chapters.

Chart 3.2 SADC member states: Average of dutiable rates, by HS chapter (Botswana, Lesotho, Malawi, Mauritius, Mozambique^a, Namibia, South Africa, Eswatini, Tanzania, Zambia, Zimbabwe)



- a MFN tariffs is for 2015 for all SADC members except for Mozambique which reflects MFN 2016 data. For the calculation of averages, specific rates are excluded and the *ad valorem* part of alternate rates are included.

SACU: HS Chapter 17 contains specific duties only.

Zimbabwe: MFN in HS Chapter 63 contains specific duties only.

Source: WTO-IDB.

3.1.2 Tariff rate quotas

3.23. There are no tariff rate quotas under the Agreement.

3.2 Regulatory Provisions of the Agreement

3.24. The SADC Secretariat has indicated that the following changes have been made to the provisions of the Trade Protocol since 2008:

- Annex 1 on Rules of Origin was reviewed and changes made to the qualifying thresholds for non-originating materials. The exception was on most items of textiles and clothing where Member States are still to resolve the issue of moving from the current double

stage transformation requirement for non-originating materials to single stage transformation.

- b. Annex VIII Concerning Sanitary and Phytosanitary Measures was adopted in July 2008. Its objectives include enhancing Member States' implementation of the WTO Agreement on the Application of SPS Measures, as well as enhancing technical capacity to implement and monitor SPS measures including promoting greater use of international standards and other matters concerning SPS.
- c. Annex IX Concerning Technical Barriers to Trade was also adopted by Ministers of Trade in July 2008. The objective of the TBT Annex is to provide a common technical regulatory framework supported by SADC TBT cooperation structures. The Annex superseded the then SQAM MoU under which the TBT cooperation structures were operating until 2008. The provisions of the TBT Annex are meant to guide the development, adoption, implementation and maintenance of Technical Regulations as provide for in Article 17 of the SADC Protocol on Trade. The provisions apply to technical regulations, standards and conformity assessment procedures as defined in the WTO TBT Agreement.

4 GENERAL PROVISIONS OF THE AGREEMENT

4.1 Relationship with other agreements concluded by the Parties

4.1. Table 4.1 sets out other regional trade agreements to which the Parties are party.

Table 4.1 SADC Member States (in bold): Participation in RTAs (notified and non-notified in force), as of 15 January 2018

RTA Name	Date of entry into force	Coverage	GATT/WTO Notification	
			Year	WTO Provision
SADC Member States - Collectively				
Southern African Development Community (SADC) ^a	01-Sept-00	Goods	2004	GATT Art. XXIV
• SADC - Accession of Seychelles	25-May-15	Goods	2016	GATT Art. XXIV
• SADC - Accession of Madagascar	Not provided	Goods	Not notified	
Individual SADC Member States				
Common Market for Eastern and Southern Africa (COMESA) ^b	08-Dec-94	Goods	1995	Enabling Clause
• COMESA - Accession of Egypt	17-Feb-99	Goods	2017	Enabling Clause
• COMESA - Accession of Djibouti	Not provided	Goods	Not notified	
• COMESA - Accession of DR Congo	Not provided	Goods	Not notified	
• COMESA - Accession of Libya	Not provided	Goods	Not notified	
• COMESA - Accession of Madagascar	Not provided	Goods	Not notified	
• COMESA - Accession of Seychelles	June 1993	Goods	Not notified	
• COMESA – Withdrawal of Angola	Not provided	Goods	Not notified	
• COMESA - Withdrawal of Lesotho	Not provided	Goods	Not notified	
• COMESA - Withdrawal of Tanzania	Not provided	Goods	Not notified	
East African Community (EAC) ^c	07-Jul-00 01-Jul-10	Goods Services	2000 2012	Enabling Clause GATS Art. V
• EAC - Accession of Burundi and Rwanda	01-Jul-07	Goods	2012	Enabling Clause
• EAC - Accession of South Sudan	Not provided	Goods & Services	Not notified	
Southern African Customs Union (SACU) ^d	15-Jul-04	Goods	2007	GATT Art. XXIV
European Union – SADC ^e	10-Oct-16	Goods	2017	GATT Art. XXIV
Southern Common Market (MERCOSUR) - SACU ^f	01-Apr-16	Goods	2017	Enabling Clause
Turkey – Mauritius	01-Jun-13	Goods	2013	GATT Art. XXIV
European Union - Eastern and Southern Africa States Interim EPA ^g	14-May-12	Goods	2012	GATT Art. XXIV
European Free Trade Association (EFTA) - SACU ^h	01-May-08	Goods	2008	GATT Art. XXIV

RTA Name	Date of entry into force	Coverage	GATT/WTO Notification	
			Year	WTO Provision
Mauritius – Pakistan	30-Nov-07	Goods	2015	Enabling Clause
European Union - South Africa	01-Jan-00	Goods	2000	GATT Art. XXIV
Global System of Trade Preferences among Developing Countries (GSTP) ⁱ	19-Apr-89	Goods	1989	Enabling Clause
Botswana - Malawi	Not provided	Goods	Not notified	
Botswana - Zimbabwe	Not provided	Goods	Not notified	
Indian Ocean Commission Trade Protocol (IOC) ^j	Not provided	Goods	Not notified	
Namibia - Zimbabwe	Not provided	Goods	Not notified	

- a The notification made in 2004 (WT/REG/176/N/1/Rev.1) indicated that the Parties to the SADC were as follows: **Angola, Botswana, Lesotho, Malawi, Mauritius, Mozambique, Namibia, South Africa, Eswatini, Tanzania, Zambia** and **Zimbabwe**. The Treaty of Accession of **Seychelles** was notified in 2016 (WT/REG368/N/1). The Treaty of Accession of Madagascar is yet to be notified.
- b The notification made in 1995 (WT/COMTD/N/3) indicated that the Parties to the COMESA were as follows: **Angola**; Burundi; Comoros; Eritrea; Ethiopia; Kenya; **Lesotho; Malawi; Mauritius**; Rwanda; Sudan; **Eswatini; Tanzania**; Uganda; **Zambia; Zimbabwe**. The Treaty of Accession of Egypt was notified in 2017 (WT/COMTD/N/51). The Treaties of Accessions of Djibouti, DR Congo, Libya, Madagascar and Seychelles are yet to be notified. The withdrawals of Angola, Lesotho and Tanzania have not yet been notified.
- c The notification made in 2000 (WT/COMTD/N/14) indicated that the Parties to the EAC were as follows: Kenya, **Tanzania** and Uganda. The Treaties of Accessions of Burundi and Rwanda were notified in 2012 (WT/COMTD/N/14/Add.2 and S/C/N/655). The Treaty of Accession of South Sudan is yet to be notified.
- d SACU Members are: **Botswana, Lesotho, Namibia, South Africa and Eswatini**.
- e The EU-SADC Agreement has been provisionally applied between the EU and **Botswana, Lesotho, Namibia, South Africa** and **Eswatini** since 10 October 2016. Ratification by **Mozambique** is still pending.
- f MERCOSUR Members are: Argentina, Brazil, Paraguay, Uruguay and *Venezuela*.
- g The EU-ESA interim EPA has been provisionally applied between the EU and **Madagascar, Mauritius, Seychelles** and **Zimbabwe** since 14 May 2012.
- h EFTA Members are: Iceland, Liechtenstein, Norway and Switzerland.
- i SADC Members which are parties to the GSTP: **Mozambique, Tanzania** and **Zimbabwe** (notification made in 1989, WTO Document L/6564).
- j SADC Members which are parties to the Indian Ocean Commission: **Mauritius** and **Seychelles**.

Source: WTO Secretariat.

ANNEX 1

1. A comparison between the scheduled elimination of tariffs applied to the Seychelles' imports and the duty rates applied on MFN imports is shown in Table A1.1, by agricultural (WTO definition), non-agricultural and total products. Applied MFN duty rates in 2015 serve as a comparison.

2. The Seychelles' overall average applied MFN tariff rate in 2015 was 3.1% (Table A1.1). The average applied tariff on agricultural goods was 4.7%, compared to an average applied tariff of 2.8% on non-agricultural products. Duty-free tariff lines accounted for 85.6% of all tariff lines. Upon its accession to the SADC Trade Protocol, for imports from SADC countries the Seychelles' share of duty-free tariff lines in agricultural products rose from 75.3% to 86.6%, while the share of duty-free tariff lines in non-agricultural products rose from 87.6% to 92.7%. Ten years after the entry into force of the Agreement, in 2025, SADC countries' exporters will face zero duties on 96.7% of the Seychelles' tariff lines (97.8% for non-agricultural products and 90.9% for agricultural products). By the end of the transition period in 2026, 92.1% of agricultural products and 98.6% of non-agricultural products will be duty-free.

Table A1.1 Seychelles: Indicators of MFN tariff rates and preferential rates for imports from SADC

Origin of goods	Year	ALL PRODUCTS			Agricultural products ^a			Non-agricultural products		
		Average applied tariff		Share of duty-free tariff lines (%)	Average applied tariff		Share of duty-free tariff lines (%)	Average applied tariff		Share of duty-free tariff lines (%)
		Overall (%)	On dutiable (%)		Overall (%)	On dutiable (%)		Overall (%)	On dutiable (%)	
MFN*	2015	3.1	22.6	85.6	4.7	23.8	75.3	2.8	22.3	87.6
SADC*	2015	1.4	18.6	91.7	2.3	27.1	86.6	1.2	16.8	92.7
	2016	1.3	17.3	91.7	2.2	26.6	86.6	1.1	15.4	92.7
	2017	1.2	17.7	92.4	2.2	26.2	86.6	1.0	15.8	93.6
	2018	1.1	16.8	92.6	2.2	25.7	86.6	0.9	14.7	93.7
	2019	1.0	15.6	92.6	2.1	25.3	86.6	0.8	13.3	93.7
	2020	1.0	14.5	92.6	2.1	24.8	86.6	0.8	12.0	93.7
	2021	0.9	13.3	92.6	2.0	24.3	86.6	0.7	10.6	93.7
	2022	0.8	11.7	92.6	1.9	23.0	86.6	0.6	9.0	93.7
	2023	0.7	27.0	96.7	1.8	47.1	90.9	0.5	20.7	97.8
	2024	0.7	27.0	96.7	1.8	47.1	90.9	0.5	20.7	97.8
	2025	0.7	27.0	96.7	1.8	47.1	90.9	0.5	20.7	97.8
	2026	0.5	34.0	97.5	1.6	62.7	92.1	0.4	24.8	98.6

* Added 83 tariff lines to complete the products under the HS 2002 nomenclature: 70 tariff lines are already duty-free at the MFN 2015 level and the remaining 13 tariff lines are dutiable. 80 tariff lines are treated as Category A (immediate liberalization), 2 as Category C and 1 as Category E.

a WTO Definition.

Note: For the calculation of averages, specific rates are excluded and the *ad valorem* part of compound duties are included. Based on the HS 2002 nomenclature.

Source: WTO estimates based on data from Seychelles authorities.

3. The Seychelles' exports benefitted from immediate tariff reductions in SADC countries' markets (Table A1.2). In SACU member states, the share of duty-free tariff lines on all products increased from 55.7% (MFN 2015) to 99.9% for imports from the Seychelles. For agricultural products the share of duty-free lines increased from 40.7% to 99.5%, while for non-agricultural products the corresponding figures rose from 58.4% to 99%.

4. In Lesotho, the share of duty-free tariff lines on all products for imports from the Seychelles increased from 55.7% (MFN 2015) to 99.9%. The corresponding figures for agricultural products showed an increase from 40.3% to 99.6% and for non-agricultural products from 58.5% to 99.9%.

5. In Malawi, the share of duty-free tariff lines on all products for imports from the Seychelles increased from 31.7% (MFN 2015) to 99.8%. The corresponding figures for agricultural products showed an increase from 11% to 99.6% and for non-agricultural products from 35.2% to 99.8%.

6. In Mauritius, the share of duty-free tariff lines on all products for imports from the Seychelles increased from 88.8% (MFN 2015) to 100%. The corresponding figures for agricultural products showed an increase from 87% to 100% and for non-agricultural products from 89.1% to 100%.

7. In Mozambique, the share of duty-free tariff lines on all products for imports from the Seychelles increased from 3.6% (MFN 2016) to 93.8%. The corresponding figures for agricultural products showed an increase from 1% to 85.7% and for non-agricultural products from 4% to 95.1%.

8. In Tanzania, the share of duty-free tariff lines on all products for imports from the Seychelles increased from 36.9% (MFN 2015) to 99%. The corresponding figures for agricultural products showed an increase from 15.5% to 97.8% and for non-agricultural products from 40.5% to 99.1%.

9. In Zambia, the share of duty-free tariff lines on all products for imports from the Seychelles increased from 29.7% (MFN 2015) to 96.7%. The corresponding figures for agricultural products showed an increase from 1.8% to 94.8% and for non-agricultural products from 34.3% to 97%.

10. In Zimbabwe, the share of duty-free tariff lines on all products for imports from the Seychelles increased from 10.1% (MFN 2015) to 97.7%. The corresponding figures for agricultural products showed an increase from 5.4% to 96.4% and for non-agricultural products from 10.9% to 98%.

Table A1.2 SADC member states: Indicators of MFN tariff rates and preferential rates for imports from Seychelles

Origin of goods	Year	ALL PRODUCTS ^a			Agricultural products ^b			Non-agricultural products ^b		
		Average applied tariff		Share of duty-free tariff lines (%)	Average applied tariff		Share of duty-free tariff lines (%)	Average applied tariff		Share of duty-free tariff lines (%)
		Overall (%)	On dutiable (%)		Overall (%)	On dutiable (%)		Overall (%)	On dutiable (%)	
SACU (Botswana, Namibia, South Africa, Eswatini)										
MFN	2015	8.5	19.8	55.7	12.2	21.7	40.7	7.9	19.4	58.4
Seychelles	2015	0.0	46.7	99.9	0.0	0.0	99.5	0.0	46.7	99.9
SACU (Lesotho)										
MFN	2015	8.6	19.9	55.7	12.4	21.9	40.3	7.9	19.5	58.5
Seychelles	2015	0.0	46.7	99.9	0.0	0.0	99.6	0.0	46.7	99.9
Malawi										
MFN	2015	12.7	18.6	31.7	18.9	21.2	11.0	11.6	17.9	35.2
Seychelles	2015	0.0	13.0	99.8	0.0	13.3	99.6	0.0	12.9	99.8
Mauritius										
MFN	2015	1.1	16.7	88.8	1.8	14.2	87.0	1.0	17.6	89.1
Seychelles	2015	0.0	0.0	100.0	0.0	0.0	100.0	0.0	0.0	100.0
Mozambique										
MFN	2016	10.0	10.4	3.6	13.4	13.6	1.0	9.5	9.9	4.0
Seychelles	2016	0.8	13.4	93.8	2.0	14.2	85.7	0.6	13.1	95.1
Tanzania										
MFN	2015	12.9	20.4	36.9	20.5	24.2	15.5	11.6	19.6	40.5
Seychelles	2015	0.2	21.8	99.0	0.5	23.2	97.8	0.2	21.3	99.1
Zambia										
MFN	2015	12.7	18.0	29.7	18.9	19.3	1.8	11.6	17.7	34.3
Seychelles	2015	0.7	20.5	96.7	1.0	20.8	94.8	0.6	20.5	97.0
Zimbabwe										
MFN	2015	15.5	17.3	10.1	25.4	27.0	5.4	13.9	15.7	10.9
Sevchelles	2015	0.3	12.2	97.7	0.5	14.2	96.4	0.2	11.6	98.0

a HS chapters 1-97 only.

b WTO Definition.

For the calculation of averages, specific rates are excluded and the *ad valorem* part of alternate rates are included.

Based on HS 2012 nomenclature except for Mozambique which is based on HS 2007 nomenclature.

Source: WTO-IDB, Trade Analysis Information System (TRAINS).

11. Tables A1.3-A1.14 show the market access opportunities in the Seychelles for the SADC countries' top 25 exports. The tables show in which year all HS 8-digit tariff lines corresponding to the product definition will become duty free under the Agreement.

12. In 2012-2014 Botswana's top 25 exports accounted on average for 95.1% of its global exports and covered a total of 40 HS lines of which 25 were already duty free on an MFN basis in the Seychelles' market in 2015 (Table A1.3). Of the remaining 15 lines, five are scheduled to be liberalized by the end of the transition period and ten remain dutiable. The products remaining dutiable are all motor vehicles, with an MFN applied rate ranging from 16.3% to 25% in 2015.

Table A1.3 Seychelles: Market access opportunities under the agreement for Botswana's top 25 exports to the world

Botswana's top export products in 2012-2014			Access Conditions to Seychelles' import markets					
HS number and description of the product		Share in global exports (%)	MFN 2015		No. of duty free lines under the agreement			Remain dutiable
			Average MFN applied rate (%)	No. of lines		2015	2023	2026
				duty-free	duti-able			
710231	Non-industrial diamonds unworked or simply sawn, cleaved or bruted	71.2	0.0	1				
710239	Diamonds, worked, but not mounted or set (excl. industrial diamonds)	10.8	0.0	1				
750110	Nickel mattes	5.1	0.0	1				
260300	Copper ores and concentrates	1.7	0.0	1				
020230	Frozen, boneless meat of bovine animals	0.9	0.0	1				
710812	Gold, incl. gold plated with platinum, unwrought, for non-monetary purposes	0.8	0.0	1				
710221	Industrial diamonds unworked or simply sawn, cleaved or bruted	0.7	0.0	1				
854430	Ignition wiring sets and other wiring sets for vehicles, aircraft or ships	0.5	0.0	1				
283620	Disodium carbonate	0.5	0.0	1				
020130	Fresh or chilled bovine meat, boneless	0.5	0.0	1				
250100	Salts, incl. table salt and denatured salt, and pure sodium chloride, whether or not in aqueous solution or containing added anti-caking or free-flowing agents; sea water	0.3	0.0	1				
870323	Motor cars and other motor vehicles principally designed for the transport of persons, of a cylinder capacity > 1.500 cm ³ but <= 3.000 cm ³	0.3	16.3	3	9			3
271011	Light oils and preparations, of petroleum or bituminous minerals which >= 90% by volume distil at 210°C	0.3	0.0	2				
720421	Waste and scrap of stainless steel "escs"	0.3	0.0	1				
170410	Chewing gum, whether or not sugar coated	0.2	0.0	1				
630260	Toilet linen and kitchen linen, of terry towelling or similar terry fabrics of cotton	0.1	25.0		1	1		
391739	Flexible tubes, pipes and hoses, and fittings therefor, of plastics, reinforced or otherwise combined with other materials	0.1	0.0	1				
270112	Bituminous coal "escs", whether or not pulverized, non-agglomerated	0.1	0.0	1				
300230	Vaccines for veterinary medicine	0.1	0.0	1				
840710	Spark-ignition reciprocating or rotary internal combustion piston engine, for aircraft	0.1	0.0	1				

Botswana's top export products in 2012-2014			Access Conditions to Seychelles' import markets					
HS number and description of the product		Share in global exports (%)	MFN 2015			No. of duty free lines under the agreement		
			Average MFN applied rate (%)	No. of lines		2015	2023	2026
				duty-free	duty-able			
481940	Sacks and bags, incl. cones, of paper, paperboard, cellulose wadding or webs of cellulose fibres	0.1	0.0	1				
580810	Braids in the piece	0.1	0.0	1				
850710	Lead-acid accumulators of a kind used for starting piston engine "starter batteries"	0.1	0.0	1				
620349	Men's or boys' trousers, bib and brace overalls, breeches and shorts of textile materials	0.1	25.0		1		1	
870421	Motor vehicles for the transport of goods, of a gross vehicle weight not exceeding 5 tonnes	0.1	25.0		4			4
TOTALS		95.1		25	15	1	1	3
								10

Note: Based on the HS 2002 nomenclature.

Source: WTO estimates based on data from Seychelles authorities and UNSD, Comtrade database.

13. In 2012-2014 Lesotho's top 25 exports accounted on average for 77.7% of its global exports and covered a total of 33 HS lines of which 16 were already duty free on an MFN basis in the Seychelles' market in 2015 (Table A1.4). Of the remaining 17 lines, 11 are to be liberalized in 2023 and six remain dutiable. The products remaining dutiable are mineral waters and faced an MFN applied rate of 7.5% in 2015.

Table A1.4 Seychelles: Market access opportunities under the agreement for Lesotho's top 25 exports to the world

Lesotho's top export products in 2012-2014			Access Conditions to Seychelles' import markets				
HS number and description of the product		Share in global exports (%)	MFN 2015			No. of duty free lines under the agreement 2023	Remain Dutiable
			Average MFN applied rate (%)	No. of lines			
				duty-free	duti-able		
710510	Dust and powder of diamonds, incl. synthetic diamonds	21.0	0.0	1			
620342	Men's or boys' trousers, bib and brace overalls, breeches and shorts, of cotton	9.7	25.0		1	1	
220110	Mineral waters and aerated waters, not containing added sugar, other sweetening matter or flavoured	6.1	SCR 7.5/lt		3		3
220190	Ordinary natural water, not containing added sugar, other sweetening matter or flavoured; ice and snow	4.3	SCR 7.5/lt		3		3
610463	Women's or girls' trousers, bib and brace overalls, breeches and shorts of synthetic fibres, knitted or crocheted	3.9	25.0		1	1	
510119	Greasy wool, incl. fleece-washed wool, neither carded nor combed	3.1	0.0	1			
853890	Parts suitable for use solely or principally with the apparatus of heading 8535, 8536 or 8537, n.e.s.	3.1	0.0	1			
610520	Men's or boys' shirts of man-made fibres, knitted or crocheted	2.8	25.0		1	1	
611030	Jerseys, pullovers, cardigans, waistcoats and similar articles, of man-made fibres, knitted or crocheted	2.6	25.0		1	1	
620462	Women's or girls' trousers, bib and brace overalls, breeches and shorts of cotton	2.4	25.0		1	1	
610990	T-shirts, singlets and other vests of textile materials, knitted or crocheted	2.2	12.5	1	1	1	
610510	Men's or boys' shirts of cotton, knitted or crocheted	1.7	25.0		1	1	
610910	T-shirts, singlets and other vests of cotton, knitted or crocheted	1.5	12.5	1	1	1	
710210	Diamonds, unsorted	1.5	0.0	1			
853931	Discharge lamps, fluorescent, hot cathode	1.4	0.0	1			

Lesotho's top export products in 2012-2014			Access Conditions to Seychelles' import markets				
HS number and description of the product		Share in global exports (%)	MFN 2015			No. of duty free lines under the agreement 2023	Remain Dutiable
			Average MFN applied rate (%)	No. of lines			
				duty-free	duti-able		
610462	Women's or girls' trousers, bib and brace overalls, breeches and shorts of cotton, knitted or crocheted	1.4	25.0		1	1	
853620	Automatic circuit breakers for a voltage <= 1.000 v	1.3	0.0	1			
620339	Men's or boys' jackets and blazers of textile materials	1.2	25.0		1	1	
640419	Footwear with outer soles of rubber or plastics and uppers of textile materials	1.1	0.0	1			
520710	Cotton yarn containing >= 85% cotton by weight, put up for retail sale	1.1	0.0	1			
110510	Flour, meal and powder of potatoes	1.0	0.0	1			
852812	Television receivers, colour, whether or not incorporating radio-broadcast receivers or sound or video recording or reproducing apparatus	0.9	0.0	1			
611020	Jerseys, pullovers, cardigans, waistcoats and similar articles, of cotton, knitted or crocheted	0.9	25.0		1	1	
520512	Single cotton yarn, of uncombed fibres, containing >= 85% cotton by weight and with a linear density of 232,56 decitex to < 714,29 decitex "> mc 14 to mc 43"	0.8	0.0	1			
110100	Wheat or meslin flour	0.7	0.0	3			
TOTALS		77.7		16	17	11	6

Note: Based on the HS 2002 nomenclature.

Source: WTO estimates based on data from Seychelles authorities, UNSD, Comtrade database (2012 export data) and ITC Trademap (2013-2014 export data).

14. In 2012-2014 Malawi's top 25 exports accounted on average for 86% of its global exports and covered a total of 28 HS lines of which 22 were already duty free on an MFN basis in the Seychelles' market in 2015 (Table A1.5). Of the remaining six lines, one was liberalized in 2015 and the other is due to be liberalized in 2023. The four products remaining dutiable are tobacco products and tea whose applied MFN tariffs in 2015 ranged from 5% to 25%.

Table A1.5 Seychelles: Market access opportunities under the agreement for Malawi's top 25 exports to the world

Malawi's top export products in 2012-2014			Access Conditions to Seychelles' import markets						
HS number and description of the product			Share in global exports (%)	MFN 2015		No. of duty free lines under the agreement		Remain dutiable	
				Avg. MFN applied rate (%)	No. of lines		2015		2023
					duty-free	duti-able			
240120	Tobacco, partly or wholly stemmed/stripped, otherwise unmanufactured	37.1	5.0		1			1	
240110	Tobacco, unstemmed/unstripped	11.8	5.0		1			1	
261210	Uranium ores and concentrates	8.2	0.0	1					
090240	Black fermented tea and partly fermented tea, whether or not flavoured, in immediate packings of > 3 kg	6.2	25.0		1			1	
170111	Raw cane sugar	5.8	0.0	1					
120220	Shelled ground-nuts, whether or not broken	3.7	0.0	1					
520100	Cotton, neither carded nor combed	2.1	0.0	1					
071310	Dried, shelled peas "pisum sativum", whether or not skinned or split	1.5	0.0	1					

Malawi's top export products in 2012-2014			Access Conditions to Seychelles' import markets					
HS number and description of the product		Share in global exports (%)	MFN 2015			No. of duty free lines under the agreement		Remain dutiable
			Avg. MFN applied rate (%)	No. of lines		2015	2023	
				duty-free	duti-able			
842641	Mobile cranes and works trucks fitted with a crane, self-propelled, on tyres	1.3	0.0	1				
080290	Nuts, fresh or dried, whether or not shelled or peeled	1.2	0.0	2				
140420	Cotton linters	0.7	0.0	1				
120100	Soya beans, whether or not broken	0.7	0.0	1				
400129	Natural rubber in primary forms or in plates, sheets or strip	0.6	0.0	1				
440799	Wood, sawn or chipped lengthwise, sliced or peeled, whether or not planed, sanded or end-jointed, of a thickness of > 6 mm	0.6	0.0	1				
441299	Veneered panels and similar laminated wood not containing particle board	0.5	0.0	1				
620690	Women's or girls' blouses, shirts and shirt-blouses of textile materials	0.5	25.0		1		1	
842959	Self-propelled mechanical shovels, excavators and shovel loaders	0.5	0.0	1				
520300	Cotton, carded or combed	0.5	0.0	1				
230610	Oil-cake and other solid residues, whether or not ground or in the form of pellets, resulting from the extraction of cotton seeds	0.4	0.0	1				
870410	Dumpers for off-highway use	0.4	0.0	1				
071320	Dried, shelled chickpeas "garbanzos", whether or not skinned or split	0.4	0.0	1				
120720	Cotton seeds, whether or not broken	0.4	0.0	1				
392321	Sacks and bags, incl. cones, of polymers of ethylene	0.4	1.7	2	1	1		
240130	Tobacco refuse	0.4	5.0		1			1
842920	Self-propelled graders and levellers	0.3	0.0	1				
TOTALS		86		22	6	1	1	4

Note: Based on the HS 2002 nomenclature.

Source: WTO estimates based on data from Seychelles authorities and UNSD, Comtrade database.

15. In 2012-2014 Mauritius' top 25 exports accounted on average for 70.5% of its global exports and covered a total of 32 HS lines of which 21 were already duty free on an MFN basis in the Seychelles' market in 2015 (Table A1.6). Of the remaining 11 lines, one is liberalized in 2015 and nine are due to be liberalized in 2023. The product remaining dutiable is frozen fish, which had an MFN applied tariff of 25% in 2015.

Table A1.6 Seychelles: Market access opportunities under the agreement for Mauritius' top 25 exports to the world

Mauritius' top export products in 2012-2014			Access Conditions to Seychelles' import markets					
HS number and description of the product		Share in global exports (%)	MFN 2015		No. of duty free lines under the agreement		Remain dutiable	
			Average MFN applied rate (%)	No. of lines		2015		2023
				duty-free	dutiable			
160414	Prepared or preserved tunas, skipjack and atlantic bonito, whole or in pieces	13.6	0.0	1				
170199	Cane or beet sugar and chemically pure sucrose, in solid form	8.0	0.0	1				
620520	Men's or boys' shirts of cotton	6.6	25.0		1		1	
610910	T-shirts, singlets and other vests of cotton, knitted or crocheted	5.9	12.5	1	1		1	
852520	Transmission apparatus incorporating reception apparatus, for radio-telephony, radio-telegraphy, radio-broadcasting or television	4.9	0.0	2				
620342	Men's or boys' trousers, bib and brace overalls, breeches and shorts, of cotton	4.4	25.0		1		1	
610990	T-shirts, singlets and other vests of textile materials, knitted or crocheted	3.7	12.5	1	1		1	
710239	Diamonds, worked, but not mounted or set	3.5	0.0	1				
170111	Raw cane sugar	3.4	0.0	1				
030379	Frozen freshwater and saltwater fish	2.7	25.0		1			1
711319	Articles of jewellery and parts thereof, of precious metal other than silver, whether or not plated or clad with precious metal	1.8	0.0	1				
620462	Women's or girls' trousers, bib and brace overalls, breeches and shorts of cotton	1.5	25.0		1		1	
610510	Men's or boys' shirts of cotton, knitted or crocheted	1.3	25.0		1		1	
611020	Jerseys, pullovers, cardigans, waistcoats and similar articles, of cotton, knitted or crocheted	1.3	25.0		1		1	
300490	Medicaments consisting of mixed or unmixed products for therapeutic or prophylactic purposes, put up in measured doses "incl. those in the form of transdermal administration" or in forms or packings for retail	1.3	0.0	4				
611090	Jerseys, pullovers, cardigans, waistcoats and similar articles, of textile materials, knitted or crocheted	0.8	25.0		1		1	
010611	Live primates	0.8	0.0	1				
030420	Frozen fish fillets	0.7	25.0		1	1		
901890	Instruments and appliances used in medical, surgical or veterinary sciences, n.e.s.	0.7	0.0	1				
510610	Carded wool yarn containing >= 85% wool by weight	0.7	0.0	1				
392330	Carboys, bottles, flasks and similar articles for the conveyance or packaging of goods, of plastics	0.7	0.0	2				
610449	Women's or girls' dresses of textile materials	0.6	25.0		1		1	
911390	Watch straps, watch bands and watch bracelets, and parts thereof, n.e.s.	0.6	0.0	1				
160420	Prepared or preserved fish	0.6	0.0	1				
230120	Flours, meals and pellets of fish or crustaceans, molluscs or other aquatic invertebrates, unfit for human consumption	0.6	0.0	1				
TOTALS		70.5		21	11	1	9	1

Note: Based on the HS 2002 nomenclature.

Source: WTO estimates based on data from Seychelles authorities and UNSD, Comtrade database.

16. In 2012-2014 Mozambique's top 25 exports accounted on average for 87.6% of its global exports and covered a total of 35 HS lines of which 33 were already duty free on an MFN basis in the Seychelles' market in 2015 (Table A1.7). The remaining two products – tobacco and bananas –

with average MFN tariffs in 2015 of 5% and 50% respectively, are not liberalized under the Agreement.

Table A1.7 Seychelles: Market access opportunities under the agreement for Mozambique's top 25 exports to the world

Mozambique's top export products in 2012-2014			Access Conditions to Seychelles' import markets			
HS number and description of the product		Share in global exports (%)	MFN 2015			Remain Dutiable
			Average MFN applied rate (%)	No. of lines		
				duty-free	duti-able	
760410	Bars, rods and profiles, of non-alloy aluminium, n.e.s.	26.2	0.0	1		
270400	Coke and semi-coke of coal, of lignite or of peat, whether or not agglomerated; retort carbon	11.8	0.0	1		
271600	Electrical energy	6.6	0.0	1		
240120	Tobacco, partly or wholly stemmed/stripped, otherwise unmanufactured	5.9	5.0		1	1
271111	Natural gas, liquefied	5.2	0.0	1		
271121	Natural gas in gaseous state	5.0	0.0	1		
380290	Activated kieselguhr and other activated natural mineral products; animal black, whether or not spent	4.7	0.0	1		
261400	Titanium ores and concentrates	3.9	0.0	1		
170111	Raw cane sugar	3.4	0.0	1		
760110	Aluminium, not alloyed, unwrought	3.0	0.0	1		
271019	Medium oils and preparations, of petroleum or bituminous minerals, n.e.s.	1.6	0.0	10		
901590	Parts and accessories for instruments and appliances used in geodesy, topography, photogrammetrical surveying, hydrography, oceanography, hydrology, meteorology or geophysics, and for rangefinders, n.e.s.	1.2	0.0	1		
520100	Cotton, neither carded nor combed	1.1	0.0	1		
890190	Vessels for the transport of goods and vessels for the transport of both persons and goods	1.1	0.0	1		
261510	Zirconium ores and concentrates	0.8	0.0	1		
030613	Frozen shrimps and prawns, whether in shell or not, incl. shrimps and prawns in shell, cooked by steaming or by boiling in water	0.7	0.0	2		
080300	Bananas, incl. plantains, fresh or dried	0.7	50.0		1	1
120740	Sesamum seeds, whether or not broken	0.7	0.0	1		
520300	Cotton, carded or combed	0.7	0.0	1		
710391	Rubies, sapphires and emeralds, worked, whether or not graded, but not strung, mounted or set, rubies, sapphires and emeralds, worked, ungraded, temporarily strung for convenience of transport	0.6	0.0	1		
440729	Tropical wood specified in subheading note 1 to this chapter, sawn or chipped lengthwise, sliced or peeled, whether or not planed, sanded or end-jointed, of a thickness of > 6 mm	0.6	0.0	1		
843143	Parts for boring or sinking machinery of subheading 8430.41 or 8430.49, n.e.s.	0.6	0.0	1		
440799	Wood, sawn or chipped lengthwise, sliced or peeled, whether or not planed, sanded or end-jointed, of a thickness of > 6 mm	0.5	0.0	1		
890520	Floating or submersible drilling or production platforms	0.5	0.0	1		
890590	Light-vessels, fire-floats, floating cranes and other vessels, the navigability of which is subsidiary to their main function	0.5	0.0	1		
TOTALS		87.6		33	2	2

Note: Based on the HS 2002 nomenclature.

Source: WTO estimates based on data from Seychelles authorities and UNSD, Comtrade database.

17. In 2012-2014 Namibia's top 25 exports accounted on average for 75.7% of its global exports and covered a total of 43 HS lines of which 23 were already duty free on an MFN basis in the Seychelles' market in 2015 (Table A1.8). Of the remaining 20 lines, three are liberalized in 2015 and three in 2026. The 14 products remaining dutiable are fish, beer and motor vehicles with average MFN tariffs in 2015 ranging from 16.3% to 25.9%.

Table A1.8 Seychelles: Market access opportunities under the agreement for Namibia's top 25 exports to the world

Namibia's top export products in 2012-2014			Access Conditions to Seychelles' import markets					
HS number and description of the product			Share in global exports (%)	MFN 2015		No. of duty free lines under the agreement		Remain Dutiable
				Average MFN applied rate (%)	No. of lines			
					duty-free	duti-able	2015	
710231	Non-industrial diamonds unworked or simply sawn, cleaved or bruted (excl. industrial diamonds)	20.3	0.0	1				
261210	Uranium ores and concentrates	9.4	0.0	1				
890520	Floating or submersible drilling or production platforms	6.6	0.0	1				
030379	Frozen freshwater and saltwater fish	4.4	25.0		1			1
790112	Unwrought zinc, not alloyed, containing by weight < 99,99% of zinc	3.7	0.0	1				
260300	Copper ores and concentrates	3.5	0.0	1				
740311	Copper, refined, in the form of cathodes and sections of cathodes	3.1	0.0	1				
710239	Diamonds, worked, but not mounted or set	2.9	0.0	1				
030420	Frozen fish fillets	2.8	25.0		1	1		
220300	Beer made from malt	2.3	SCR25.93 /l		6			6
890400	Tugs and pusher craft	2.0	0.0	1				
030374	Frozen mackerel "scomber scombrus, scomber australasicus, scomber japonicus"	1.8	25.0		1			1
710813	Gold, incl. gold plated with platinum, in semi-manufactured forms, for non-monetary purposes	1.7	0.0	1				
870323	Motor cars and other motor vehicles principally designed for the transport of persons, of a cylinder capacity > 1.500 cm³ but <= 3.000 cm³	1.4	16.3	3	9		3	6
890690	Vessels, incl. lifeboats	1.4	0.0	2				
030378	Frozen hake "merluccius spp., urophycis spp."	1.3	25.0		1	1		
260800	Zinc ores and concentrates	1.1	0.0	1				
790111	Unwrought zinc, not alloyed, containing by weight >= 99,99% of zinc	1.1	0.0	1				
271011	Light oils and preparations, of petroleum or bituminous minerals which >= 90% by volume distil at 210°c	1.0	0.0	2				
020130	Fresh or chilled bovine meat, boneless	0.8	0.0	1				
250100	Salts, incl. table salt and denatured salt, and pure sodium chloride, whether or not in aqueous solution or containing added anti-caking or free-flowing agents; sea water	0.6	0.0	1				
160413	Prepared or preserved sardines, sardinella and brisling or sprats, whole or in pieces	0.6	0.0	1				
010210	Pure-bred breeding bovines	0.6	0.0	1				
020230	Frozen, boneless meat of bovine animals	0.6	0.0	1				
080610	Fresh grapes	0.6	15.0		1	1		
TOTALS		75.7		23	20	3	3	14

Note: Based on the HS 2002 nomenclature.

Source: WTO estimates based on data from Seychelles authorities and UNSD, Comtrade database.

18. In 2012-2014 South Africa's top 25 exports accounted on average for 52.3% of its global exports and covered a total of 54 HS lines of which 35 were already duty free on an MFN basis in the Seychelles' market in 2015 (Table A1.9). Of the remaining 19 lines, five are to be liberalized in 2026 and 14 remain dutiable. The products remaining dutiable are all motor vehicles which faced an average applied MFN rate in 2015 ranging from 16.3% to 25%.

Table A1.9 Seychelles: Market access opportunities under the agreement for South Africa's top 25 exports to the world

South Africa's top export products in 2012-2014			Access Conditions to Seychelles' import markets				
HS number and description of the product		Share in global exports (%)	MFN 2015			No. of duty free lines under the agreement 2026	Remain Dutiable
			Average MFN applied rate (%)	No. of lines			
				duty-free	duti-able		
710813	Gold, incl. gold plated with platinum, in semi-manufactured forms, for non-monetary purposes	7.0	0.0	1			
270112	Bituminous coal "ecsc", whether or not pulverized, non-agglomerated	6.1	0.0	1			
260112	Agglomerated iron ores and concentrates "ecsc"	5.5	0.0	1			
711019	Platinum, in semi-manufactured forms	3.5	0.0	1			
271011	Light oils and preparations, of petroleum or bituminous minerals which >= 90% by volume distil at 210°C	3.2	0.0	2			
720241	Ferro-chromium, containing by weight > 4% of carbon	3.0	0.0	1			
870323	Motor cars and other motor vehicles principally designed for the transport of persons, of a cylinder capacity > 1.500 cm³ but <= 3.000 cm³	2.7	16.3	3	9	3	6
260111	Non-agglomerated iron ores and concentrates "ecsc"	2.6	0.0	1			
711011	Platinum, unwrought or in powder form	2.5	0.0	1			
870421	Motor vehicles for the transport of goods, of a gross vehicle weight not exceeding 5 tonnes	2.4	25.0		4		4
842139	Machinery and apparatus for filtering or purifying gases	2.0	0.0	1			
260200	Manganese ores and concentrates, incl. ferruginous manganese ores and concentrates, with a manganese content of >= 20%, calculated on the dry weight "ecsc"	1.5	0.0	1			
710231	Non-industrial diamonds unworked or simply sawn, cleaved or bruted	1.4	0.0	1			
261000	Chromium ores and concentrates	1.2	0.0	1			
760110	Aluminium, not alloyed, unwrought	1.1	0.0	1			
870322	Motor cars and other motor vehicles principally designed for the transport of persons, incl. station wagons and racing cars, with spark-ignition internal combustion reciprocating piston engine of a cylinder capacity > 1.000 cm³ but <= 1.500 cm³	0.8	16.3	2	6	2	4
711021	Palladium, unwrought or in powder form	0.8	0.0	1			
710239	Diamonds, worked, but not mounted or set	0.7	0.0	1			
261400	Titanium ores and concentrates	0.7	0.0	1			
470200	Chemical wood pulp, dissolving grades	0.7	0.0	1			
080510	Fresh or dried oranges	0.6	0.0	1			
271600	Electrical energy	0.6	0.0	1			
100590	Maize	0.6	0.0	1			
220421	Wine of fresh grapes, incl. fortified wines, and grape must whose fermentation has been arrested by the addition of alcohol, in containers of <= 2 l	0.5	0.0	8			
260300	Copper ores and concentrates	0.5	0.0	1			
TOTALS		52.3		35	19	5	14

Note: Based on the HS 2002 nomenclature.

Source: WTO estimates based on data from Seychelles authorities and UNSD, Comtrade database.

19. In 2012-2014 Eswatini's top 25 exports accounted on average for 85.4% of its global exports and covered a total of 33 HS lines of which 28 were already duty free on an MFN basis in the Seychelles' market in 2015 (Table A1.10). The remaining five lines are to be liberalized in 2023.

Table A1.10 Seychelles: Market access opportunities under the agreement for Eswatini's top 25 exports to the world

Eswatini's top export products in 2012-2014			Access Conditions to Seychelles' import markets			
HS number and description of the product		Share in global exports (%)	MFN 2015			No. of duty free lines under the agreement 2023
			Average MFN applied rate (%)	No. of lines		
				duty-free	duti-able	
330210	Mixtures of odoriferous substances and mixtures, incl. alcoholic solutions, with a basis of one or more of these substances, of a kind used in the food and drink industries	27.6	0.0	1		
170111	Raw cane sugar	18.4	0.0	1		
382490	Chemical products and preparations of the chemical or allied industries, incl. those consisting of mixtures of natural products, n.e.s.	16.3	0.0	1		
260111	Non-agglomerated iron ores and concentrates "ecsc"	3.9	0.0	1		
291814	Citric acid	1.7	0.0	1		
490199	Printed books, brochures and similar printed matter	1.6	0.0	1		
170199	Cane or beet sugar and chemically pure sucrose, in solid form	1.4	0.0	1		
440729	Tropical wood specified in subheading note 1 to this chapter, sawn or chipped lengthwise, sliced or peeled, whether or not planed, sanded or end-jointed, of a thickness of > 6 mm	1.4	0.0	1		
610910	T-shirts, singlets and other vests of cotton, knitted or crocheted	1.3	12.5	1	1	1
170410	Chewing gum, whether or not sugar coated	1.2	0.0	1		
630533	Sacks and bags, for the packing of goods, of polyethylene or polypropylene strip or the like	1.0	0.0	1		
270119	Coal "ecsc", whether or not pulverized, non-agglomerated	1.0	0.0	1		
481910	Cartons, boxes and cases, of corrugated paper or paperboard	0.8	0.0	1		
620342	Men's or boys' trousers, bib and brace overalls, breeches and shorts, of cotton	0.8	25.0		1	1
230990	Preparations of a kind used in animal feeding	0.8	0.0	6		
620462	Women's or girls' trousers, bib and brace overalls, breeches and shorts of cotton	0.7	25.0		1	1
170290	Sugars in solid form, incl. invert sugar and chemically pure maltose, and sugar and sugar syrup blends containing in the dry state 50% by weight of fructose	0.7	0.0	1		
440910	Coniferous wood, incl. strips and friezes for parquet flooring, not assembled, continuously shaped "tongued, grooved, rebated, chamfered, v-jointed beaded, moulded, rounded or the like" along any of its edges, ends or faces, whether or not planed, sanded or end-jointed	0.7	0.0	1		
621132	Men's or boys' track suits and other garments, n.e.s. of cotton (excl. knitted or crocheted)	0.7	25.0		1	1
220710	Undenatured ethyl alcohol, of actual alcoholic strength of >= 80%	0.7	0.0	2		
170490	Sugar confectionery not containing cocoa, incl. white chocolate	0.6	0.0	2		
440110	Fuel wood, in logs, billets, twigs, faggots or similar forms	0.6	0.0	1		
200799	Jams, jellies, marmalades, purees or pastes of fruit, obtained by cooking, whether or not containing added sugar or other sweetening matter	0.6	0.0	1		

Eswatini's top export products in 2012-2014			Access Conditions to Seychelles' import markets			
HS number and description of the product		Share in global exports (%)	MFN 2015			No. of duty free lines under the agreement 2023
			Average MFN applied rate (%)	No. of lines		
				duty-free	duti-able	
620349	Men's or boys' trousers, bib and brace overalls, breeches and shorts of textile materials	0.6	25.0		1	1
200830	Citrus fruit, prepared or preserved, whether or not containing added sugar or other sweetening matter or spirit, n.e.s.	0.5	0.0	1		
TOTALS		85.4		28	5	5

Note: Based on the HS 2002 nomenclature.

Source: WTO estimates based on data from Seychelles authorities and ITC, Trademap.

20. In 2012-2014 Tanzania's top 25 exports accounted on average for 70.9% of its global exports and covered a total of 30 HS lines of which 23 were already duty free on an MFN basis in the Seychelles' market in 2015 (Table A1.11). Of the remaining seven lines, four are liberalized in 2015. The three products remaining dutiable are tobacco, cigars and tea which had MFN applied tariffs in 2015 ranging from 25% to 200%.

Table A1.11 Seychelles: Market access opportunities under the agreement for Tanzania's top 25 exports to the world

Tanzania's top export products in 2012-2014			Access Conditions to Seychelles' import markets				
HS number and description of the product		Share in global exports (%)	MFN 2015			No. of duty free lines under the agreement 2015	Remain Dutiable
			Avg. MFN applied rate (%)	No. of lines			
				duty-free	duti-able		
710812	Gold, incl. gold plated with platinum, unwrought, for non-monetary purposes	16.7	0.0	1			
710813	Gold, incl. gold plated with platinum, in semi-manufactured forms, for non-monetary purposes	13.5	0.0	1			
261690	Precious metal ores and concentrates	8.2	0.0	1			
080131	Fresh or dried cashew nuts, in shell	4.4	0.0	2			
260300	Copper ores and concentrates	3.6	0.0	1			
120740	Sesamum seeds, whether or not broken	3.4	0.0	1			
240120	Tobacco, partly or wholly stemmed/stripped, otherwise unmanufactured	2.9	5.0		1		1
090111	Coffee (excl. roasted and decaffeinated)	2.9	25.0		1	1	
520100	Cotton, neither carded nor combed	1.6	0.0	1			
151190	Palm oil and its fractions, whether or not refined	1.3	0.0	1			
630491	Articles for interior furnishing, knitted or crocheted	1.1	25.0		1	1	
030420	Frozen fish fillets	1.0	25.0		1	1	
240290	Cigars, cheroots, cigarillos and cigarettes consisting wholly of tobacco substitutes	1.0	200.0		1		1
090240	Black fermented tea and partly fermented tea, whether or not flavoured, in immediate packings of > 3 kg	1.0	25.0		1		1
071310	Dried, shelled peas "pisum sativum", whether or not skinned or split	0.9	0.0	1			
230630	Oil-cake and other solid residues, whether or not ground or in the form of pellets, resulting from the extraction of sunflower seeds	0.9	0.0	1			
071390	Dried, shelled leguminous vegetables, whether or not skinned or split	0.8	0.0	1			
170199	Cane or beet sugar and chemically pure sucrose, in solid form	0.8	0.0	1			

Tanzania's top export products in 2012-2014			Access Conditions to Seychelles' import markets				
HS number and description of the product		Share in global exports (%)	MFN 2015			No. of duty free lines under the agreement 2015	Remain Dutiable
			Avg. MFN applied rate (%)	No. of lines			
				duty-free	duti-able		
710310	Precious stones and semi-precious stones, unworked or simply sawn or roughly shaped, whether or not graded	0.8	0.0	1			
030490	Frozen fish meat, whether or not minced	0.7	25.0		1	1	
090700	Cloves, whole fruit, cloves and stems	0.7	0.0	1			
843143	Parts for boring or sinking machinery of subheading 8430.41 or 8430.49, n.e.s.	0.7	0.0	1			
110100	Wheat or meslin flour	0.6	0.0	3			
701090	Carboys, bottles, flasks, jars, pots, phials and other containers, of glass, of a kind used for the commercial conveyance or packing of goods, and preserving jars, of glass	0.6	0.0	1			
110319	Groats and meal of cereals	0.6	0.0	3			
TOTALS		70.9		23	7	4	3

Note: Based on the HS 2002 nomenclature.

Source: WTO estimates based on data from Seychelles authorities and UNSD, Comtrade database.

21. In 2012-2014 Zambia's top 25 exports accounted on average for 85.6% of its global exports and covered a total of 25 HS lines of which 23 were already duty free on an MFN basis in the Seychelles' market in 2015 (Table A1.12). The remaining product – tobacco – is not liberalized under the Agreement and had an MFN applied rate of 5% in 2015.

Table A1.12 Seychelles: Market access opportunities under the agreement for Zambia's top 25 exports to the world

Zambia's top export products in 2012-2014			Access Conditions to Seychelles' import markets			
HS number and description of the product		Share in global exports (%)	MFN 2015			Remain Dutiable
			Average MFN applied rate (%)	No. of lines		
				duty-free	duti-able	
740311	Copper, refined, in the form of cathodes and sections of cathodes	47.6	0.0	1		
740319	Copper, refined, unwrought	16.4	0.0	1		
740329	Copper alloys unwrought	2.2	0.0	1		
280700	Sulphuric acid; oleum	1.8	0.0	1		
810590	Articles of cobalt, n.e.s.	1.6	0.0	1		
710813	Gold, incl. gold plated with platinum, in semi-manufactured forms, for non-monetary purposes	1.4	0.0	1		
740811	Wire of refined copper, with a maximum cross-sectional dimension of > 6 mm	1.2	0.0	1		
100590	Maize (excl. seed)	1.1	0.0	1		
170111	Raw cane sugar (excl. added flavouring or colouring)	1.1	0.0	1		
252329	Portland cement	1.1	0.0	1		
100510	Maize seed	1.0	0.0	1		
740919	Plates, sheets and strip, of refined copper, not in coils, of a thickness of > 0,15 mm	1.0	0.0	1		
240110	Tobacco, unstemmed/unstripped	1.0	5.0		1	1
271600	Electrical energy	0.9	0.0	1		
711299	Waste and scrap of silver, incl. metal clad with silver, and other waste and scrap containing silver or silver compounds, of a kind used principally for the recovery of precious metal	0.8	0.0	1		
520100	Cotton, neither carded nor combed	0.8	0.0	1		
282200	Cobalt oxides and hydroxides; commercial cobalt oxides	0.6	0.0	1		

Zambia's top export products in 2012-2014			Access Conditions to Seychelles' import markets			
HS number and description of the product		Share in global exports (%)	MFN 2015			Remain Dutiable
			Average MFN applied rate (%)	No. of lines		
				duty-free	duti-able	
240120	Tobacco, partly or wholly stemmed/stripped, otherwise unmanufactured	0.6	5.0		1	1
280200	Sulphur, sublimed or precipitated; colloidal sulphur	0.5	0.0	1		
230210	Bran, sharps and other residues of maize "corn", whether or not in the form of pellets, derived from sifting, milling or other working	0.5	0.0	1		
854459	Electric conductors, for a voltage > 80 v but <= 1.000 v, insulated, not fitted with connectors, n.e.s.	0.5	0.0	1		
170310	Cane molasses resulting from the extraction or refining of sugar	0.4	0.0	1		
710399	Precious and semi-precious stones, worked, whether or not graded, but not strung, mounted or set, precious and semi-precious stones, worked, ungraded, temporarily strung for convenience of transport	0.4	0.0	1		
260300	Copper ores and concentrates	0.4	0.0	1		
710310	Precious stones and semi-precious stones, unworked or simply sawn or roughly shaped, whether or not graded	0.3	0.0	1		
TOTALS		85.6		23	2	2

Note: Based on the HS 2002 nomenclature.

Source: WTO estimates based on data from Seychelles authorities and UNSD, Comtrade database.

22. In 2012-2014 Zimbabwe's top 25 exports accounted on average for 90.1% of its global exports and covered a total of 25 HS lines of which 21 were already duty free on an MFN basis in the Seychelles' market in 2015 (Table A1.13). The remaining lines – tobacco, cigarettes and tea – whose MFN tariffs in 2015 ranged from zero to 25%, are not liberalized under the Agreement.

Table A1.13 Seychelles: Market access opportunities under the agreement for Zimbabwe's top 25 exports to the world

Zimbabwe's top export products in 2012-2014			Access Conditions to Seychelles' import markets			
HS number and description of the product		Share in global exports (%)	MFN 2015			Remain Dutiable
			Average MFN applied rate (%)	No. of lines		
				duty-free	dutiable	
240120	Tobacco, partly or wholly stemmed/stripped, otherwise unmanufactured	23.0	5.0		1	1
710813	Gold, incl. gold plated with platinum, in semi-manufactured forms, for non-monetary purposes	15.9	0.0	1		
260400	Nickel ores and concentrates	9.9	0.0	1		
710221	Industrial diamonds unworked or simply sawn, cleaved or bruted	8.4	0.0	1		
750110	Nickel mattes	7.3	0.0	1		
720241	Ferro-chromium, containing by weight > 4% of carbon	5.2	0.0	1		
711011	Platinum, unwrought or in powder form	4.0	0.0	1		
520100	Cotton, neither carded nor combed	3.6	0.0	1		
710210	Diamonds, unsorted	3.3	0.0	1		
170111	Raw cane sugar	2.9	0.0	1		
240220	Cigarettes, containing tobacco	0.9	SCR96/200 Cigarettes		1	1
410320	Raw hides and skins of reptiles, fresh or salted, dried, limed, pickled or otherwise preserved	0.6	0.0	1		
750210	Nickel, not alloyed, unwrought	0.6	0.0	1		

Zimbabwe's top export products in 2012-2014			Access Conditions to Seychelles' import markets			
HS number and description of the product		Share in global exports (%)	MFN 2015			Remain Dutiable
			Average MFN applied rate (%)	No. of lines		
				duty-free	dutiable	
251612	Granite, merely cut, by sawing or otherwise, into blocks or slabs of a square or rectangular shape (excl. already with the characteristics of setts, curbstones and flagstones)	0.5	0.0	1		
090240	Black fermented tea and partly fermented tea, whether or not flavoured, in immediate packings of > 3 kg	0.5	25.0		1	1
270400	Coke and semi-coke of coal, of lignite or of peat, whether or not agglomerated; retort carbon	0.5	0.0	1		
252329	Portland cement	0.5	0.0	1		
240110	Tobacco, unstemmed/unstripped	0.4	5.0		1	1
880230	Aeroplanes and other powered aircraft of an unladen weight > 2.000 kg but <= 15.000 kg	0.3	0.0	1		
740311	Copper, refined, in the form of cathodes and sections of cathodes	0.3	0.0	1		
970500	Collections and collector's pieces of zoological, botanical, mineralogical, anatomical, historical, archaeological, palaeontological, ethnographic or numismatic interest	0.3	0.0	1		
230610	Oil-cake and other solid residues, whether or not ground or in the form of pellets, resulting from the extraction of cotton seeds	0.3	0.0	1		
481910	Cartons, boxes and cases, of corrugated paper or paperboard	0.3	0.0	1		
440310	Wood in the rough, treated with paint, stains, creosote or other preservatives	0.3	0.0	1		
520512	Single cotton yarn, of uncombed fibres, containing >= 85% cotton by weight and with a linear density of 232,56 decitex to < 714,29 decitex "> mc 14 to mc 43"	0.2	0.0	1		
TOTALS		90.1		21	4	4

Note: Based on the HS 2002 nomenclature.

Source: WTO estimates based on data from Seychelles authorities and UNSD, Comtrade database.

23. Tables A1.14-A1.15 show the market access opportunities in SADC countries for the Seychelles' top 25 exports. The tables show in which year all HS 8-digit tariff lines corresponding to the product definition will become duty free under the Agreement.

24. In 2012-2014 the Seychelles' top 25 exports accounted on average for 96.4% of its global exports (Table A1.14). All of its top 25 exports are either already duty-free in SADC countries (except Mozambique) or become duty-free once the Agreement enters into force.

Table A1.14 SADC (except Mozambique): Market access opportunities under the Agreement for Seychelles' top 25 exports to the world

Seychelles' top export products (2012-2014)		MFN average (2015)								No. of duty-free lines under the Agreement 2015
HS code and description		Share in global exports	SACU	MW	MU	TZ	ZM	ZW	Duty-free	
160414	Prepared or preserved tunas, skipjack and atlantic bonito, whole or in pieces	61.3	25.0	25.0	0.0	25.0	25.0	22.5	MU	SACU, MW, TZ, ZM, ZW
271099	Waste oils containing mainly petroleum or bituminous minerals	28.5	0.0	0.0	0.0	10.0	25.0	40.0	SACU, MW, MU	TZ, ZM, ZW
230120	Flours, meals and pellets of fish or crustaceans, molluscs or other aquatic invertebrates, unfit for human consumption	2.0	0.0	0.0	0.0	10.0	0.0	10.0	SACU, MW, MU, ZM	TZ, ZW
880330	Parts of aeroplanes or helicopters, n.e.s.	0.7	0.0	0.0	0.0	0.0	0.0	2.5	SACU, MW, MU, TZ, ZM	ZW
240220	Cigarettes, containing tobacco	0.6	45.0	25.0	0.0	35.0	25.0	-	MU	SACU, MW, TZ, ZM, ZW
030345	Frozen atlantic and pacific bluefin tuna	0.5	0.0	10.0	0.0	25.0	25.0	0.0	SACU, MU, ZW	MW, TZ, ZM
030349	Frozen tunas of the genus "thunnus"	0.5	0.0	10.0	0.0	25.0	25.0	0.0	SACU, MU, ZW	MW, TZ, ZM
150420	Fats and oils of fish and their fractions, whether or not refined	0.4	0.0	10.0	0.0	10.0	5.0	5.0	SACU, MU	MW, TZ, ZM, ZW
852610	Radar apparatus	0.2	0.0	0.0	0.0	0.0	15.0	0.0	SACU, MW, MU, TZ, ZW	ZM
840710	Spark-ignition reciprocating or rotary internal combustion piston engine, for aircraft	0.2	0.0	0.0	0.0	0.0	0.0	5.0	SACU, MW, MU, TZ, ZW	ZW
840910	Parts suitable for use solely or principally with internal combustion piston engine for aircraft, n.e.s.	0.2	0.0	0.0	0.0	10.0	15.0	5.0	SACU, MW, MU	TZ, ZM, ZW
902000	Breathing appliances and gas masks	0.2	0.0	0.0	0.0	0.0	0.0	5.0	SACU, MW, MU, TZ, ZM	ZW
890399	Vessels for pleasure or sports; rowing boats	0.2	10.0	25.0	0.0	25.0	0.0	20.0	MU, ZM	SACU, MW, TZ, ZW
901890	Instruments and appliances used in medical, surgical or veterinary sciences, n.e.s.	0.2	0.0	0.0	0.0	0.0	5.0	0.0	SACU, MW, MU, TZ, ZW	ZM
030571	Shark fins, smoked, dried, salted or in brine	0.1	12.5	10.0	0.0	25.0	25.0	0.0	MU, ZW	SACU, MW, TZ, ZM
030572	Fish heads, tails and maws, smoked, dried, salted or in brine	0.1	12.5	10.0	0.0	25.0	25.0	10.0	MU	SACU, MW, TZ, ZM, ZW
030579	Fish fins and other edible fish offal, smoked, dried, salted or in brine	0.1	12.5	15.0	0.0	25.0	25.0	10.0	MU	SACU, MW, TZ, ZM, ZW
030559	Dried fish, even salted but not smoked	0.1	12.5	10.0	0.0	25.0	15.0	20.0	MU	SACU, MW, TZ, ZM, ZW
080111	Desiccated coconuts	0.1	0.0	25.0	0.0	25.0	25.0	5.0	SACU, MU	MW, TZ, ZM, ZW

Seychelles' top export products (2012-2014)			MFN average (2015)							No. of duty-free lines under the Agreement 2015
HS code and description		Share in global exports	SACU	MW	MU	TZ	ZM	ZW	Duty-free	
300339	Medicaments containing hormones or steroids used as hormones, not containing antibiotics, not in measured doses or put up for retail sale	0.1	0.0	0.0	0.0	0.0	0.0	2.5	SACU, MW, MU, TZ, ZM	ZW
842620	Tower cranes	0.1	0.0	0.0	0.0	0.0	0.0	0.0	SACU, MW, MU, TZ, ZM, ZW	
890392	Motor boats and motor yachts, for pleasure or sports	0.0	10.0	25.0	0.0	25.0	0.0	20.0	MU, ZM	SACU, MW, TZ, ZW
880390	Parts of aircraft and spacecraft, n.e.s.	0.0	0.0	0.0	0.0	0.0	5.0	2.5	SACU, MW, MU, TZ	ZM, ZW
230110	Flours, meals and pellets, of meat or offal, unfit for human consumption; greaves	0.0	0.0	0.0	0.0	10.0	0.0	5.0	SACU, MW, MU, ZM	TZ, ZW
030224	Fresh or chilled turbot "psetta maxima"	0.0	0.0	25.0	0.0	25.0	25.0	0.0	SACU, MU, ZW	MW, TZ, ZM
Total		96.4								

- Specific duties only.
SACU (Botswana, Lesotho, Namibia, South Africa, Eswatini); MW=Malawi; MU=Mauritius;
TZ=Tanzania; ZM=Zambia; ZW=Zimbabwe.
Based on the HS 2012 nomenclature.

Source: WTO estimates based on data of SADC (except Mozambique) 2015 tariffs in the WTO-IDB, Trade Analysis Information System (TRAINS), and export data from UNSD, Comtrade database.

25. In the case of the Seychelles' exports to Mozambique, all but one of its top 25 global exports are already duty-free or become duty-free in Mozambique's market upon the Agreement's entry into force (Table A1.15). The product remaining subject to duties is cigarettes with an MFN applied tariff of 20% in 2015.

Table A1.15 Mozambique: Market access opportunities under the Agreement for Seychelles' top 25 exports to the world

Seychelles' top export products in 2012-2014			Access Conditions to Mozambique's import markets				
HS number and description of the product		Share in global exports (%)	MFN 2016			No. of duty free lines under the agreement 2016	Remain Dutiable
			Average MFN applied rate (%)	No. of lines			
				duty-free	duti-able		
160414	Prepared or preserved tunas, skipjack and atlantic bonito, whole or in pieces	61.3	20.0		1	1	
271099	Waste oils containing mainly petroleum or bituminous minerals	28.5	7.5		1	1	
230120	Flours, meals and pellets of fish or crustaceans, molluscs or other aquatic invertebrates, unfit for human consumption	2.0	7.5		1	1	
030349	Frozen tunas of the genus "thunnus"	1.0	20.0		1	1	
880330	Parts of aeroplanes or helicopters, n.e.s.	0.7	0.0	1			
240220	Cigarettes, containing tobacco	0.6	20.0		1		1
030559	Dried fish, salted, not smoked	0.5	20.0		1	1	

Seychelles' top export products in 2012-2014			Access Conditions to Mozambique's import markets				
HS number and description of the product		Share in global exports (%)	MFN 2016			No. of duty free lines under the agreement 2016	Remain Dutiable
			Average MFN applied rate (%)	No. of lines			
				duty-free	duti-able		
150420	Fats and oils of fish and their fractions, whether or not refined (excl. liver oils and chemically modified)	0.4	7.5		1	1	
852610	Radar apparatus	0.2	5.0		1	1	
840710	Spark-ignition reciprocating or rotary internal combustion piston engine, for aircraft	0.2	7.5		1	1	
840910	Parts suitable for use solely or principally with internal combustion piston engine for aircraft, n.e.s.	0.2	7.5		1	1	
902000	Breathing appliances and gas masks	0.2	5.0		1	1	
890399	Vessels for pleasure or sports; rowing boats	0.2	20.0		1	1	
901890	Instruments and appliances used in medical, surgical or veterinary sciences, n.e.s.	0.2	5.0		1	1	
030799	Molluscs, fit for human consumption, whether in shell or not, frozen, dried, salted or in brine	0.1	20.0		1	1	
080111	Desiccated coconuts	0.1	20.0		1	1	
300339	Medicaments containing hormones or steroids used as hormones, not containing antibiotics, not in measured doses or put up for retail sale	0.1	0.0	1			
030229	Fresh or chilled flat fish	0.1	20.0		1	1	
842620	Tower cranes	0.1	5.0		1	1	
030379	Frozen freshwater and saltwater fish	0.0	10.0	1	1	1	
890392	Motor boats and motor yachts, for pleasure or sports	0.0	20.0		1	1	
880390	Parts of aircraft and spacecraft, n.e.s.	0.0	0.0	1			
230110	Flours, meals and pellets, of meat or offal, unfit for human consumption; greaves	0.0	7.5		1	1	
842959	Self-propelled mechanical shovels, excavators and shovel loaders	0.0	5.0		1	1	
720449	Waste and scrap of iron or steel	0.0	2.5		1	1	
TOTALS		96.7		4	22	21	22

Note: Based on HS 2007 nomenclature.

Source: WTO estimates based on data of Mozambique 2016 tariffs in the WTO-IDB and export data from UNSD, Comtrade database.