



The South Africa I know, the home I understand

---

# TOURISM

## 2013

Report No. 03-51-02 (2013)

**Tourism, 2013 / Statistics South Africa**

Published by Statistics South Africa, Private Bag X44, Pretoria 0001

© Statistics South Africa, 2014

Users may apply or process this data, provided Statistics South Africa (Stats SA) is acknowledged as the original source of the data; that it is specified that the application and/or analysis is the result of the user's independent processing of the data; and that neither the basic data nor any reprocessed version or application thereof may be sold or offered for sale in any form whatsoever without prior permission from Stats SA.

Stats SA Library Cataloguing-in-Publication (CIP) Data

**Tourism, 2013 / Statistics South Africa. Pretoria: Statistics South Africa, 2013**

[Report No. 03-51-02 (2013)]

**69pp**

**ISBN: 978-0-621-41568-5**

A complete set of Stats SA publications is available at Stats SA Library and the following libraries:

- National Library of South Africa, Pretoria Division
- National Library of South Africa, Cape Town Division
- Library of Parliament, Cape Town
- Bloemfontein Public Library
- Natal Society Library, Pietermaritzburg
- Johannesburg Public Library
- Eastern Cape Library Services, King William's Town
- Central Regional Library, Polokwane
- Central Reference Library, Mbombela
- Central Reference Collection, Kimberley
- Central Reference Library, Mmabatho

This report is available on the Stats SA website: [www.statssa.gov.za](http://www.statssa.gov.za)

Copies are obtainable from: Printing and Distribution, Statistics South Africa

Tel: (012) 310 8093 / 8251 / 8358 / 8161

Fax: (012) 321 7381

Email: [inadp@statssa.gov.za](mailto:inadp@statssa.gov.za)

[annelineb@statssa.gov.za](mailto:annelineb@statssa.gov.za)

**Technical enquiries:**

Tel: (012) 310 8692

Email: [TshwaroG@statssa.gov.za](mailto:TshwaroG@statssa.gov.za)

## **Preface**

The report provides information on South African residents and foreign travellers who passed through all South African air, land and sea ports of entry/exit in 2013. It summarises data published in the monthly releases on *Tourism and Migration* from January to December 2013 highlighting annual numbers of travellers and tourists. Details on mode of travel, seasonal travel patterns, purpose of visit; length of stay of visit; and demographic characteristics of tourists who visited South Africa in 2013 are provided.

**PJ Lehohla**  
**Statistician-General**

## Contents

List of tables.....	v
List of figures.....	vi
1. Introduction .....	1
1.1. Background .....	1
1.2. Objectives of this report.....	2
1.3. Scope of this report .....	2
2. Data and methods.....	2
2.1 Data source.....	2
2.2 Data processing and analysis.....	2
2.3 Limitations of data .....	3
3. All travellers.....	3
3.1 Number of travellers .....	3
3.1.1 South African residents .....	4
3.1.2 Foreign travellers.....	6
4. Tourists.....	11
4.1 Region of residence.....	12
4.2 Ten leading countries .....	13
4.3 Mode of travel .....	15
4.4 Purpose of visit .....	16
4.5 Duration of stay .....	17
4.6 Sex and age distribution .....	20
5. Summary.....	21
6. Appendices .....	21
7. Definition of terms .....	62
8. Other Stats SA reports .....	63

**List of tables**

Table 3.1: Number of arrivals and departures of South African residents by mode of travel, 2013 ..... 4

Table 3.2: Percentage distribution of South African residents by mode of travel and place of arrival or departure, 2013 ..... 5

Table 3.3: Number of arrivals and departures of foreign travellers residents by mode of travel and place of arrival or departure, 2013 ..... 7

Table 3.4: Number of foreign arrivals and departures by mode of travel and place of arrival or departure, 2013 ..... 8

Table 4.1: Distribution of tourists by mode of travel and place of arrival, 2013 ..... 15

**List of figures**

Figure 3.1: Number of arrivals and departures of travellers by year of travel, 2000–2013 ..... 3

Figure 3.2: Number of arrivals and departures of South African residents by year of travel, 2000–2013 ..... 4

Figure 3.3: Percentage distribution of arrivals and departures of South African residents by month of travel, 2013..... 6

Figure 3.4: Number of arrivals and departures of foreign travellers by year of travel, 2000–2013 ..... 7

Figure 3.5: Percentage distribution of foreign arrivals and departures by month of travel, 2013 ..... 9

Figure 3.6: Percentage distribution of foreign arrivals by purpose of visit, 2013 ..... 9

Figure 3.7: Distribution of foreign arrivals by type of visitor, 2013 ..... 10

Figure 4.1: Number of tourists by month and year of travel, 2012 and 2013 ..... 11

Figure 4.2: Distribution of tourists by region of residence, 2013..... 12

Figure 4.3: Percentage distribution of tourists by region of residence and month of arrival, 2013..... 12

Figure 4.4: Number of tourists from ten leading overseas countries in 2013 compared to 2012 ..... 13

Figure 4.5: Number of tourists from ten leading SADC countries in 2013 compared to 2012..... 14

Figure 4.6: Number of tourists from ten leading ‘other’ African countries in 2013 compared to 2012..... 14

Figure 4.7: Distribution of tourists by region of residence and mode of travel, 2013 ..... 16

Figure 4.8: Percentage distribution of tourists by region and purpose of visit, 2013 ..... 17

Figure 4.9 Percentage distribution of tourists from overseas countries on holiday, 2013..... 18

Figure 4.10: Percentage distribution of tourists from overseas countries on business, 2013 ..... 18

Figure 4.11: Percentage distribution of tourists from overseas countries on study, 2013..... 18

Figure 4.12: Percentage distribution of tourists from SADC countries on holiday, 2013 ..... 18

Figure 4.13: Percentage distribution of tourists from SADC countries on business, 2013..... 18

Figure 4.14: Percentage distribution of tourists from SADC countries on study, 2013 ..... 18

Figure 4.15: Percentage distribution of tourists from ‘other’ African countries on holiday, 2013 ..... 19

Figure 4.16: Percentage distribution of tourists from ‘other’ African countries on business, 2013 ..... 19

Figure 4.17: Percentage distribution of tourists from ‘other’ African countries on study, 2013 ..... 19

Figure 4.18: Average (median) number of days tourists spent by month of arrival, 2013 ..... 19

Figure 4.19: Distribution of tourists by region of residence and sex, 2013 ..... 20

Figure 4.20: Distribution of tourists by region of residence and age, 2013 ..... 21

## 1. Introduction

### 1.1. Background

Administrative records regulating the flow of people across boundaries, specifically border statistics, are an important source of statistical data on temporary population movements in many countries. Generally, countries routinely collect some data from both residents and non-residents who pass through the demarcated air, land and sea ports on arrival in and departing from the country. The method, the kind of collected data, the quality of data and the dissemination and availability of processed data differ quite widely among countries since there is no international standardised template for the recording of information on travellers. Besides the impact of the level of infrastructure development, the national differences are largely shaped by the immigration policies and regulations of individual countries.

Data collection methods may be electronic, manual or both. Travel documents could be scanned and/or travellers are expected to complete an arrival and departure form/card. The level of documentation and the information collected from travellers are often influenced by the citizenship / nationality of the travel document and the purpose of entry.

Data obtained from foreigners or non-residents can be used to categorise them into visitors and non-visitors. Usually, the data given on the form regarding purpose of visit and/or length of stay is also used to categorise travellers into visitors and migrants. In countries that do not use cards/forms, data on type of visa/permit can also be used for the categorisation. In addition, there are countries that issue special cards for registered immigrants that they could use to cross in and out of the country of residence. Thus the information from the visa, permit and the card/form are used to classify non-visitors into migratory categories such as short-term and long-term migrants; temporary migrants; permanent migrants; labour migrants, asylum seekers, students, *etc.* according to a country's specifications.

Because border statistics are derived from arrival data they could be the most suitable data source for the direct measurement of the *flow* of immigrants (UN, 2011). The data are routinely collected as travellers pass through the immigration check points at the port of entry so data are available at any given time intervals. It is very crucial to note that unlike data from census or sample surveys that count individual persons, border statistics by their nature, do measure events *i.e.* movements of persons rather than the physical persons. The simple reason is that the same person can cross the border a number of times during a specified time and his or her information is recorded every time he or she passes through the border.

The management of population movements across South African borders and immigration into South Africa fall under the jurisdiction of the Department of Home Affairs (DHA). The jurisdiction of this responsibility is enshrined in the various immigration acts, amendments, laws and regulations. Currently, with respect to the collection of data on population movements in and out of South Africa, the DHA operates with the Immigration Act 2002 (Act No. 13 of 2002), its amendments and associated regulations. The latest Immigration Regulations came into operation on 26 May 2014. Any changes and amendments in the legislation and regulations affect both the flow of travellers as well as the methods of collecting data and the kind of information collected on travellers.

At the ports of entry/exit (see Appendix I for the distribution of all South African ports), the immigration officers of the DHA collect information on South African residents and foreign travellers arriving into or departing from South Africa. This information is used to produce statistical releases on all travellers, with emphasis on tourists and an annual report aggregating the results of one calendar year.

## 1.2. Objectives of this report

The report forms part of a regular annual series of publications on tourism. The main aim of the report is to present information on population movements into and out of South Africa in 2013. Specifically, the report provides:

- Information on arrivals and departures of South African residents and foreign travellers.
- A detailed analysis of the movements of tourists and their demographic characteristics over the twelve months period is provided.

## 1.3. Scope of this report

This report is based on information on population movements across South Africa's ports of entry/exit covering the period from 1 January to 31 December 2013. It covers data on arrivals and departures of South African residents and foreign travellers. A detailed analysis of the data on foreign tourists with respect to: mode of travel, purpose of visit, sex and age distribution is covered. The report also describes trends in the overall number of travellers and tourists from 2000 to 2013.

## 2. Data and methods

### 2.1 Data source

Data routinely collected by immigration officers at all land, air and sea ports of entry/exit (see Appendix I) on all travellers (South African residents and foreign travellers) arriving into or departing from South Africa are captured into the Department of Home Affairs's (DHA) population Movement Control System (MCS). The data provide the best national coverage (in terms of both space and time) on the population movements of South African residents and foreign travellers. Among other uses, the data:

- can be used to estimate, monitor and understand salient characteristics of South African residents and foreign travellers travelling into and out of South Africa;
- provide information that can be used to assess the extent of government's progress in strengthening bilateral and multilateral political and economic relations with other countries;
- can be used to estimate the number and some characteristics of same-day visitors and tourists that visit South Africa;
- provide information for marketing tourism by identifying niche, emerging and declining markets (both at country and regional levels); and
- provide information that can be used for monitoring the effects of major international and national events (positive or negative) on the arrival of visitors into the country.

Generally the data are collected directly from travel documents either by scanning them or by capturing information from the travel documents onto the port's electronic database. Individual ports regularly transmit the data into the national database *i.e.* the MCS at the head office of the DHA. Data from DHA head office are stored at the State Information Technology Agency (SITA).

### 2.2 Data processing and analysis

Statistics South Africa (Stats SA) downloads the data covering a particular calendar month from SITA. SAS is used for data editing and analysis. Descriptive analyses (frequencies, cross-tabulations, percentage distributions and median ages) were used to summarise the data. The results are presented in table and graph formats. These are undertaken on a monthly basis to publish information on tourism in the monthly *Tourism and Migration* (P0351)



statistical release in order to meet users' immediate needs. The cumulative data for twelve months are published in the *Tourism* report on an annual basis.

**2.3 Limitations of data**

The information on the total number of arrivals and departures of South African residents is collected from the scanning of passports. However, data are not collected from passengers on country visited; country of final destination, the duration of stay; intended duration of stay and purpose of visit. With this limitation, it is impossible to identify the number of tourists from the data on South African residents.

**3. All travellers**

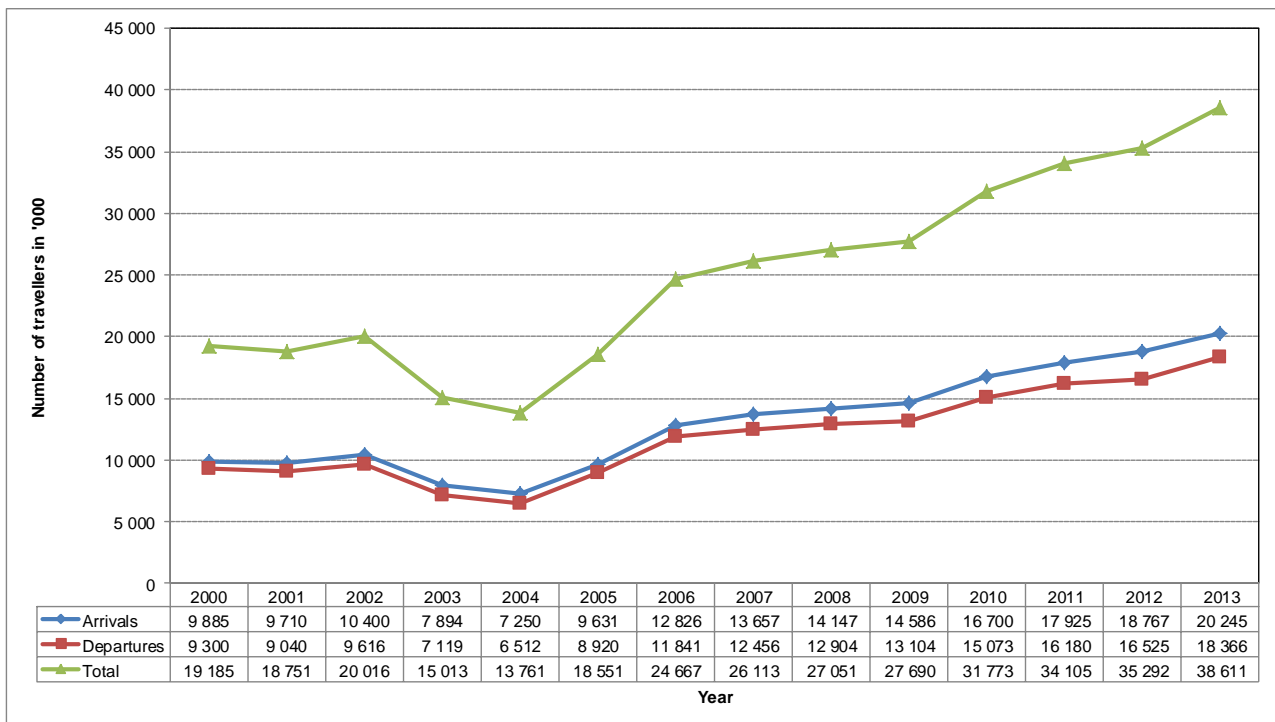
**3.1 Number of travellers**

The results present detailed information derived from the data published in the January 2013 to December 2013 *Tourism and Migration* monthly releases (P0351). In addition to the 2013 data, data from 2012 or earlier are presented to provide some comparison in observed trends and patterns (see Appendix II).

Travellers are composed of arrivals into and departures from South Africa regardless of residency status. According to data presented in Figure 3.1, a total of 38 610 830 travellers (arrivals plus departures) were recorded in 2013 compared to 19 185 135 recorded in 2000, indicating that the overall number of travellers doubled over this 14-year period. Similarly, there were 20 245 051 arrivals and 18 365 779 departures in 2013 compared to 9 884 953 and 9 300 182 of arrivals and departures respectively in 2000.

Recent trends show that the overall number of travellers grew by 9,4% between 2012 and 2013 while arrivals only increased by 7,9% and departures only by 11,1% during the same period.

**Figure 3.1: Number of arrivals and departures of travellers by year of travel, 2000–2013**



### 3.1.1 South African residents

In 2013, 10 257 711 South African resident travellers were recorded compared to the volume of 7 718 469 in 2000 (see Figure 3.2). The data further indicate that the annual volumes of arrivals and departures remained more or less the same throughout the period from 2000 to 2013. However, there were sharp declines in the number of South African travellers in 2003 and 2004. These declines in the volume of South African travellers between 2003 and 2004 were mainly due to the changes in the Immigration Act, 2002 (Act No.13 of 2002) regarding the recording of information on the international movements of South African residents. The amendments to the Act resulted in information on arrival and departure of South African residents not being consistently collected (i.e. misinterpretation of the Act led to some immigration officers collecting while others were not collecting information on South African residents). Collection resumed after the implementation of the Immigration Amendment Act, 2004 (Act No.19 of 2004).

**Figure 3.2: Number of arrivals and departures of South African residents by year of travel, 2000–2013**



#### Mode of travel

Table 3.1 shows that the mode of travel for South African entering and leaving the country in 2013 was largely the same. Most South Africans used road transport to arrive (64,3%) and leave (64,7%) the country. Air transport was the second most popular mode of travel used by 35,4% arrivals and 35,0% departures. Less than 1% arrived or left by sea.

**Table 3.1: Number of arrivals and departures of South African residents by mode of travel, 2013**

Mode of travel	Arrivals		Departures	
	Number	%	Number	%
Air	1 800 338	35,4	1 810 878	35,0
Road	3 271 463	64,3	3 341 984	64,7
Sea	17 861	0,4	14 321	0,3
Unspecified	398	0,0	468	0,0
<b>Total</b>	<b>5 090 060</b>	<b>100,0</b>	<b>5 167 651</b>	<b>100,0</b>

Detailed information on ports used by South African to leave or enter the country by mode of travel is provided in Table 3.2 (absolute numbers are provided in Appendix III). Due to the large number of land ports as shown in Appendix I, border countries are used in the table instead of the specific land ports names. That is, data for all ports found on the border within a particular country are combined and the country name is used.

Amongst road users, a total of over half of South African residents used Lesotho and Swaziland ports of entry. For arrivals, 29,1% entered though Lesotho and 23,6% used Swaziland as a port of entry. Similarly, for departures, most road users went through both Lesotho (29,6%) and Swaziland (23,4%) ports. Out of the total number of residents using air as their mode of travel, the majority arrived (82,5%) and departed (82,2%) at O.R. Tambo International Airport while 11,6% arrived and 11,6% left through Cape Town International Airport. Less than 5% came (4,3%) or left (4,5%) using King Shaka International Airport and 1,6% arrived and 1,7% left through other airports. Out of those who arrived by sea, most arrived (66,0%) or left (59,0%) through the Durban harbour.

Detailed information on mode of travel by place and month of arrival and departure for South African residents for 2013 is presented in Appendix IV and Appendix V respectively.

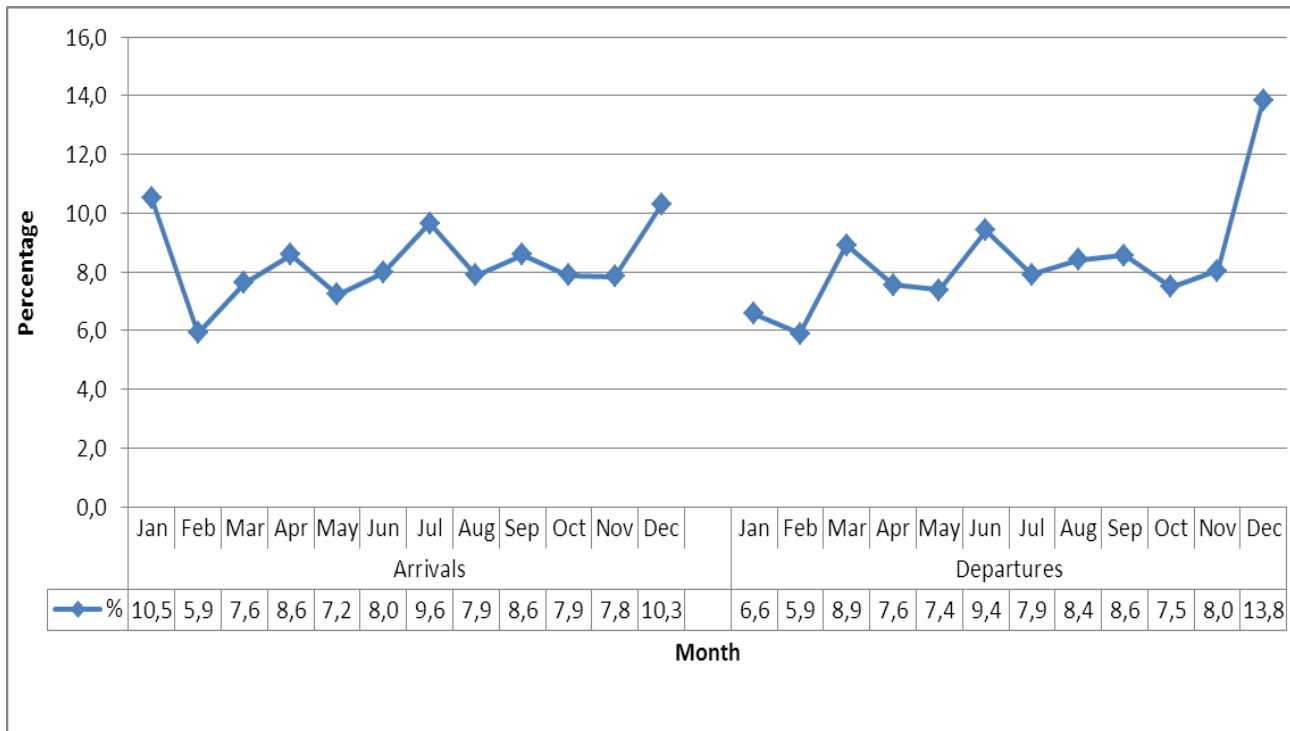
**Table 3.2: Percentage distribution of South African residents by mode of travel and place of arrival or departure, 2013**

Mode of travel and place of arrival or departure	Percentage (arrivals)	Percentage (departures)
<b>Air</b>	<b>100,0</b>	<b>100,0</b>
Cape Town International Airport	11,6	11,6
King Shaka International Airport	4,3	4,5
O.R. Tambo International Airport	82,5	82,2
Other Airports	1,6	1,7
<b>Road</b>	<b>100,0</b>	<b>100,0</b>
Botswana	16,9	16,8
Lesotho	29,1	29,6
Mozambique	18,9	18,9
Namibia	4,6	4,6
Swaziland	23,6	23,4
Zimbabwe	6,8	6,8
<b>Sea</b>	<b>100,0</b>	<b>100,0</b>
Cape Town Harbour	33,7	40,6
Durban Harbour	66,0	59,0
Port Elizabeth Harbour	0,3	0,5

**Month of travel**

The distribution of South Africans arriving and departing the country classified by month of travel is provided in Figure 3.3. The result show that the highest proportion of arrivals (10,5%) was recorded in January, followed by December (10,3%) while the lowest proportion was recorded in February (5,9%). The highest percentage of departures was recorded in December (13,8%) and the lowest in February (5,9%).

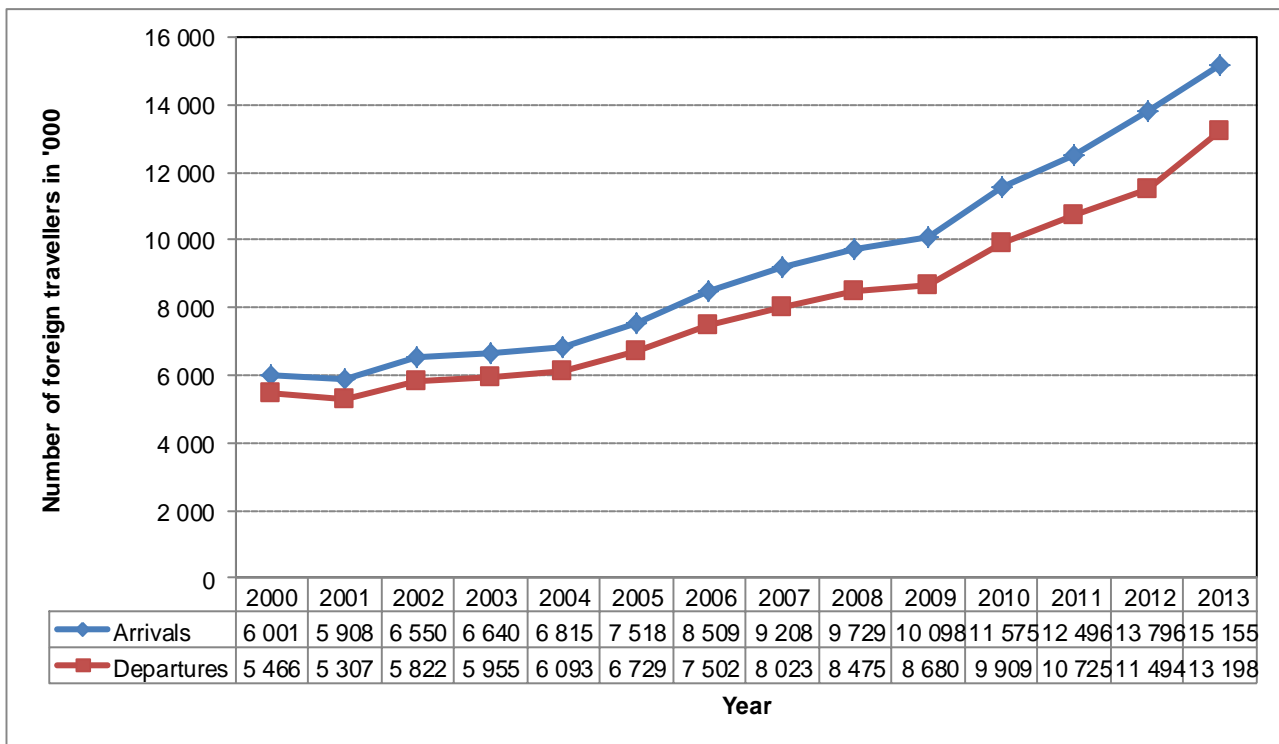
**Figure 3.3: Percentage distribution of arrivals and departures of South African residents by month of travel, 2013**



**3.1.2 Foreign travellers**

It is observed from Figure 3.4 (see Appendix II also) that apart from a slight decline in 2001, the number of both foreign arrivals and departures increased between 2000 and 2013. About 15,2 million foreigners arrived and 13,2 million left South Africa in 2013. Unlike South African travellers, the volume of departures of foreign travellers has been lower than that of arrivals throughout the fourteen-year period, with a notable widening of the gap since 2006. With respect to growth, between 2012 and 2013, foreign arrivals grew by 9,9% compared to a growth of 14,8% for foreign departures in 2013.

**Figure 3.4: Number of arrivals and departures of foreign travellers by year of travel, 2000–2013**



**Mode of travel**

Table 3.3 indicates that during 2013 the mode of travel for foreigners coming into South Africa or leaving the country is largely the same. About three quarters of foreigners arrived (75,2%) or left (76,9%) the country by road. Air travel was used by about a quarter of foreign arrivals (24,5%) and foreign departures (22,8%). The sea was used by 0,3% of foreigners to enter or leave South Africa.

**Table 3.3: Number of arrivals and departures of foreign travellers by mode of travel and place of arrival or departure, 2013**

Mode of travel	Arrivals		Departures	
	Number	%	Number	%
Air	3 716 843	24,5	3 005 557	22,8
Road	11 389 972	75,2	10 154 211	76,9
Sea	47 155	0,3	37 367	0,3
Unspecified	1 021	0,0	993	0,0
<b>Total</b>	<b>15 154 991</b>	<b>100,0</b>	<b>13 198 128</b>	<b>100,0</b>

Most of the foreigners who arrived by road entered through the Zimbabwe (28,6%) and the Lesotho (28,5%) ports of entry (see Table 3.4). These two countries were also mostly used by foreigner who left South Africa in 2013 (28,0% and 27,4%, respectively). Other common ports of entry/exit used were Mozambique and Swaziland, each used by about 15% of arrivals and departures.

The majority of the foreigners who travelled by air arrived (84,2%) and left (80,7%) South Africa through O.R. Tambo International Airport (see Appendix VI for absolute numbers). Cape Town International Airport was used by 13,9% foreigners to arrive in the country and 17,0% to leave the country. Those who travelled by sea mainly used the Cape Town and Durban harbours. About 44,6% and 48,7% of foreign arrivals used Cape Town and Durban harbours, respectively while these harbours were used by 49,3% and 44,9% of foreigners to leave South Africa, respectively.

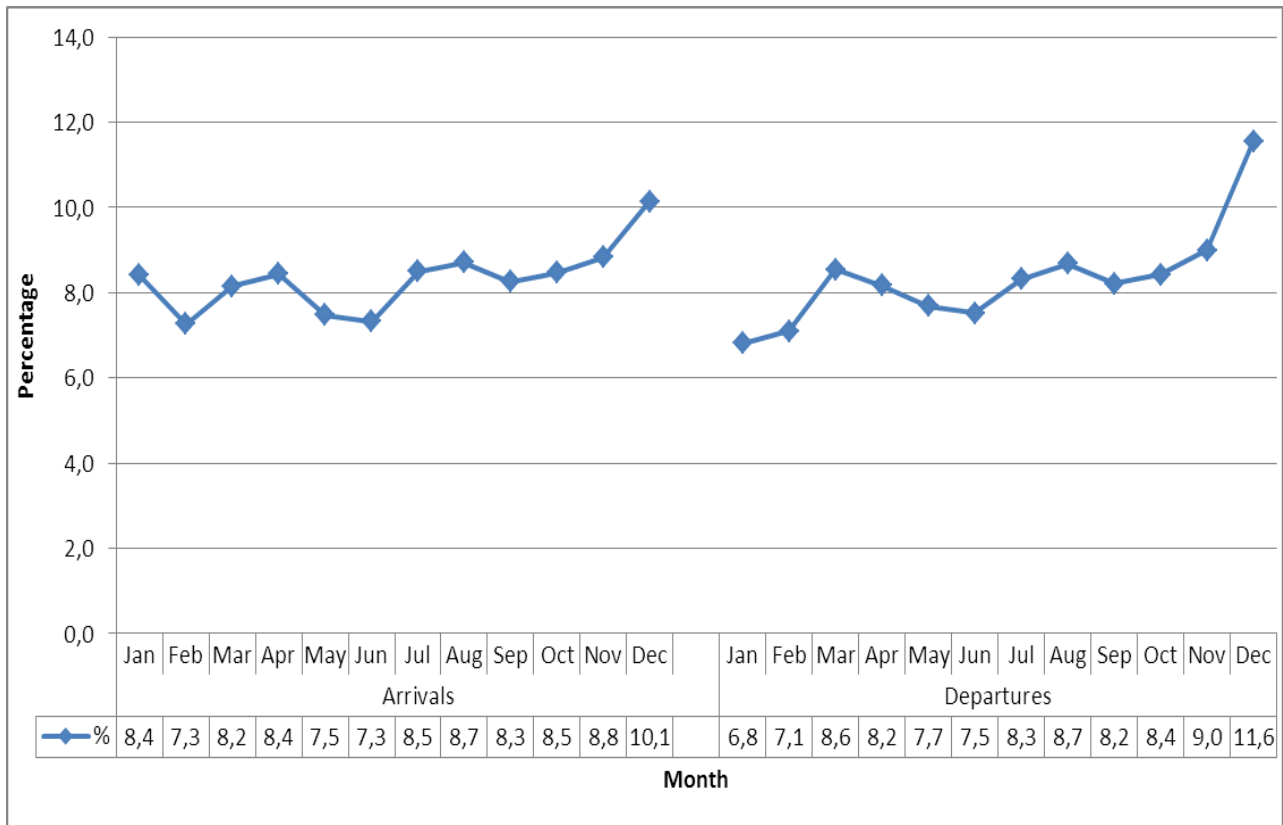
**Table 3.4: Number of foreign arrivals and departures by mode of travel and place of arrival or departure, 2013**

Mode of travel and place of arrival or departure	Percentage (arrivals)	Percentage (departures)
<b>Air</b>	<b>100,0</b>	<b>100,0</b>
Cape Town International Airport	13,9	17,0
King Shaka International Airport	1,4	1,7
O.R. Tambo International Airport	84,2	80,7
Other Airports	0,5	0,6
<b>Road</b>	<b>100,0</b>	<b>100,0</b>
Botswana	10,6	11,6
Lesotho	28,5	27,4
Mozambique	15,8	15,4
Namibia	1,5	1,7
Swaziland	15,0	15,8
Zimbabwe	28,6	28,0
<b>Sea</b>	<b>100,0</b>	<b>100,0</b>
Cape Town Harbour	44,6	49,3
Durban Harbour	48,7	44,9
Port Elizabeth Harbour	2,9	5,7
Other harbours	3,8	0,1

**Month of travel**

The monthly distribution of foreign arrivals and departures by mode of travel and place of arrival and departure are provided in Appendices VII and VIII and summarised in Figure 3.5. The results indicate that most foreign arrivals were recorded in December (10,1%) and the least in February (7,3%) and in June (7,3%) while most departures were also recorded in December (11,6%) but the least in January(6,8%).

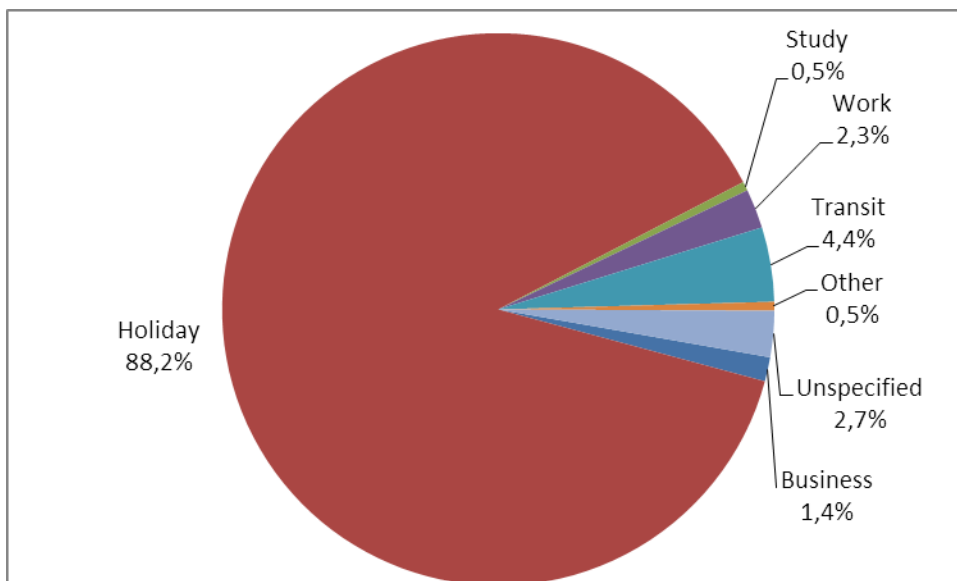
**Figure 3.5: Percentage distribution of foreign arrivals and departures by month of travel, 2013**



**Purpose of visit**

Figure 3.6 shows that the main purpose of visit for foreign arrivals was holiday (88,2%). Whereas 1,4% of the 2013 arrivals were on business; 2,3% and 0,5% of arrivals were workers and students respectively. The number of foreign arrivals by purpose of visit differed by month (see Appendix IX). Most of those who came for business came in November (36 554); for holidays mainly in December (1 388 275); for study mainly in January (14 160) and July (13 525); and for work mainly in January (53 389).

**Figure 3.6: Percentage distribution of foreign arrivals by purpose of visit, 2013**

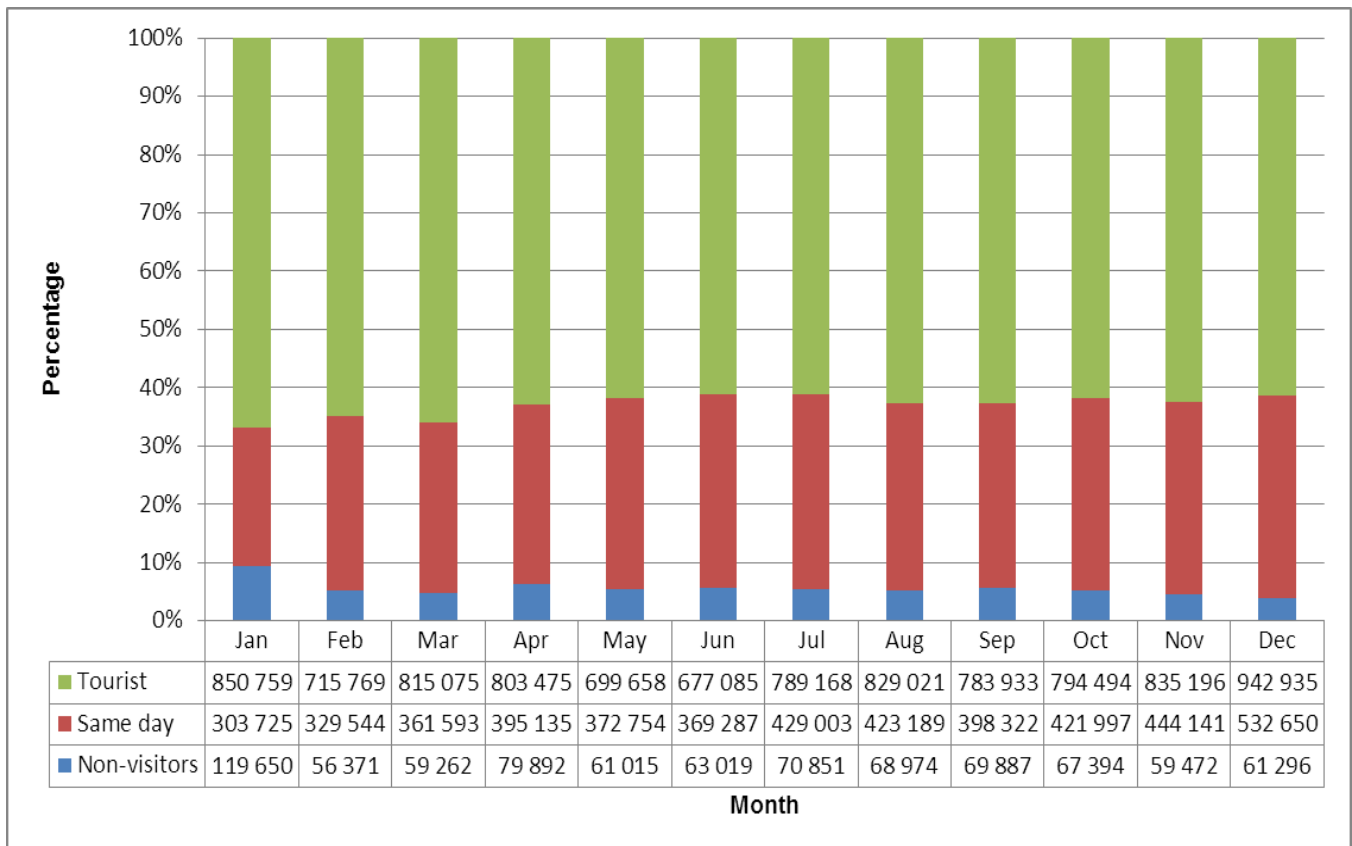


### Type of visitors

Foreign arrivals can be classified as visitors and non-visitors depending on their purpose of visit. Furthermore, the visitors can be grouped as same-day visitors and tourists (overnight visitors). In 2013, there were 837 083 (5,5%) non-visitors and 14 317 908 (94,5%) visitors (see Appendix X). The visitors were made up of 4 781 340 (33,4%) same-day visitors and 9 536 568 (66,6%) overnight visitors or tourists.

It is observed from the monthly distribution of the data presented in Figure 3.7 that the volume of non-visitors was highest in January (119 650). February recorded the lowest number of non-visitors (56 371). The monthly volume of same-day visitors was quite uniform throughout the year, ranging from 303 725 in January to 532 650 in December with a monthly average of about 398 445 visitors.

**Figure 3.7: Distribution of foreign arrivals by type of visitor, 2013**



Further analysis on same-day visitors (see Appendix XI) indicates that a great majority of the same-day visitors [4 570 052 (95,6%)] came into the country by road; most of whom were from SADC countries [4 479 597 (98,0%)]. Virtually all same day visitors [4 753 908 (99,4%)] came for holidays. The rest were business persons [14 990 (0,3%)], students [8 193 (0,2%)] and visitors in transit [4 249 (0,1%)].



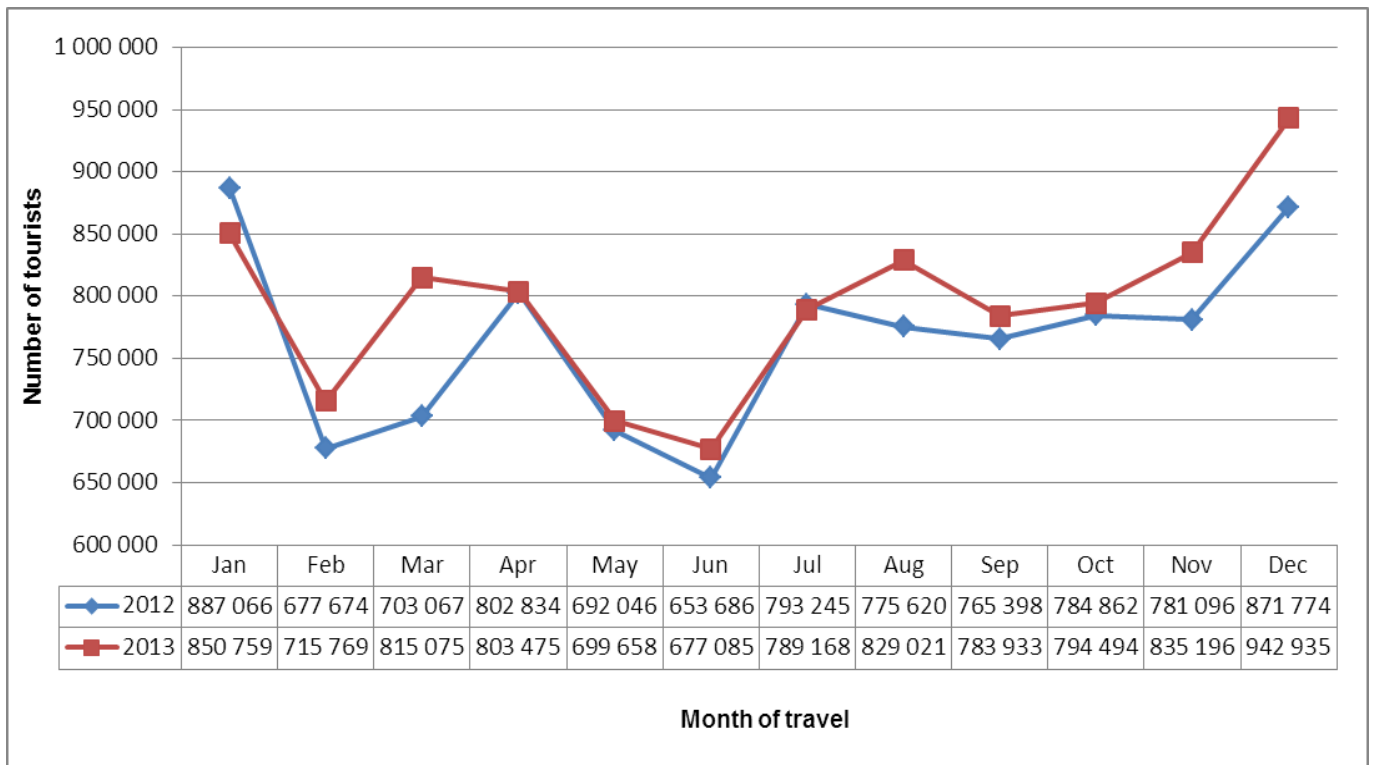
### 4. Tourists

One of the objectives of the South African Immigration Act, 2002 (Act No. 13 of 2002) is to promote tourism to South Africa. This section presents the number of tourists that visited South Africa in 2013, as well as their regions of residence, mode of travel, purpose of visit, duration of stay and their demographic (age and sex) characteristics. A total of 9 536 568 tourists came to South Africa in 2013, showing an increase of 3,8% from the 9 188 368 tourists recorded in 2012.

Data in Figure 4.1 (and Appendix XII) indicate that the least number of arrivals was recorded in June [677 085 (7,1%)] in 2013 whilst December [942 935 (9,9%)] recorded the highest number of arrivals. With the exception of January and July, Figure 4.1 further shows that the monthly arrivals in 2013 were generally higher than the monthly arrivals observed in 2012. However, the monthly patterns of both 2013 and 2012 were generally the same.

Appendix XII further indicates some diversity in the monthly arrival patterns regarding the types of tourists. Whereas the highest number of tourists on holidays was recorded in December [859 657 (10,0%)], that of business persons were recorded in November [32 937 (16,5%)] and that of students recorded in January [13 226 (18,5%)] and in July [12 706 (17,8%)] .

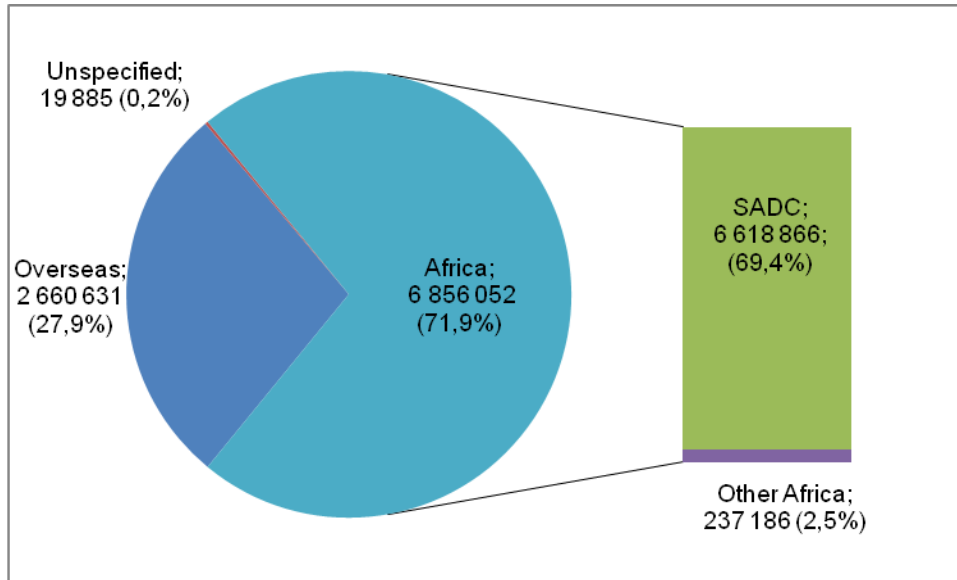
**Figure 4.1: Number of tourists by month and year of travel, 2012 and 2013**



### 4.1 Region of residence

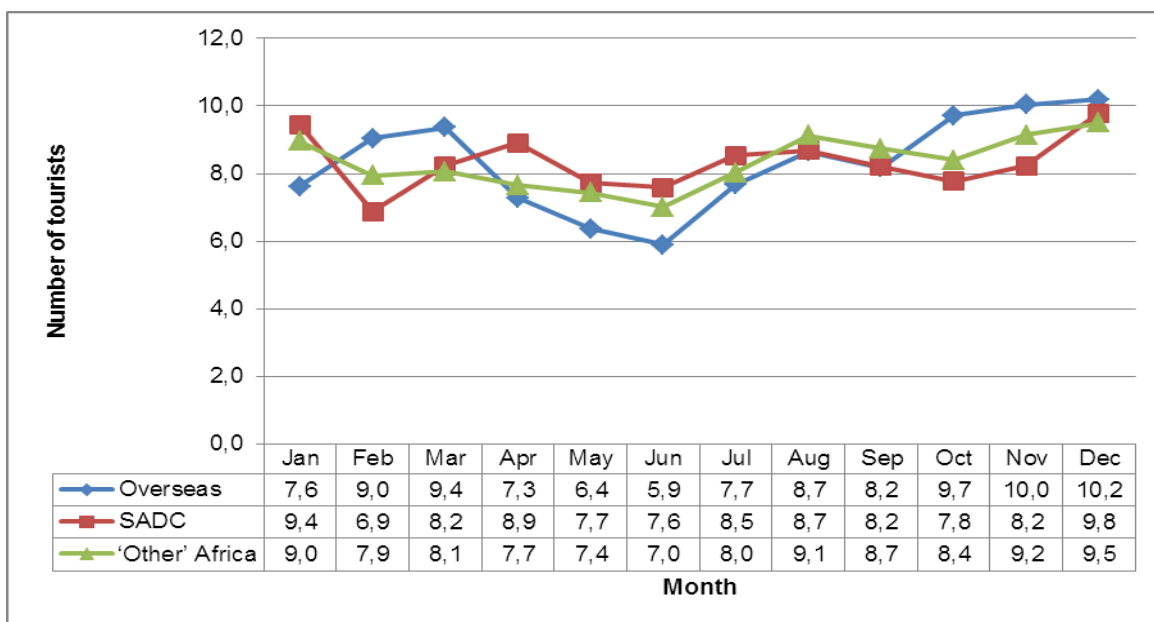
The breakdown of the number of tourists by region provided in Figure 4.2 indicates that 69,4% of the tourists were residents of SADC countries and 2,5% from 'other' African countries in total making up 71,9% of tourists from Africa. Residents of overseas countries made up 27,9% of the tourists.

**Figure 4.2: Distribution of tourists by region of residence, 2013**



Detailed information on the number of tourists by region and sub-region of residence and the month of arrival of is provided in Appendix XIII and the percentage distribution at regional level shown in Figure 4.3. It is observed that there are regional differences in the monthly arrivals of tourists. Thus in 2013 the lowest and highest proportion of overseas travellers were recorded in June (5,9%) and December (10,2%) respectively. December (9,8%) recorded the largest proportion of tourists from the SADC region with their lowest arrivals in February (6,9%). Furthermore, the least and the largest proportion of arrivals for tourists from the 'other' African region occurred in June (7,0%) and December (9,5%) respectively. For all regions, December recorded the largest proportion of arrivals.

**Figure 4.3: Percentage distribution of tourists by region of residence and month of arrival, 2013**

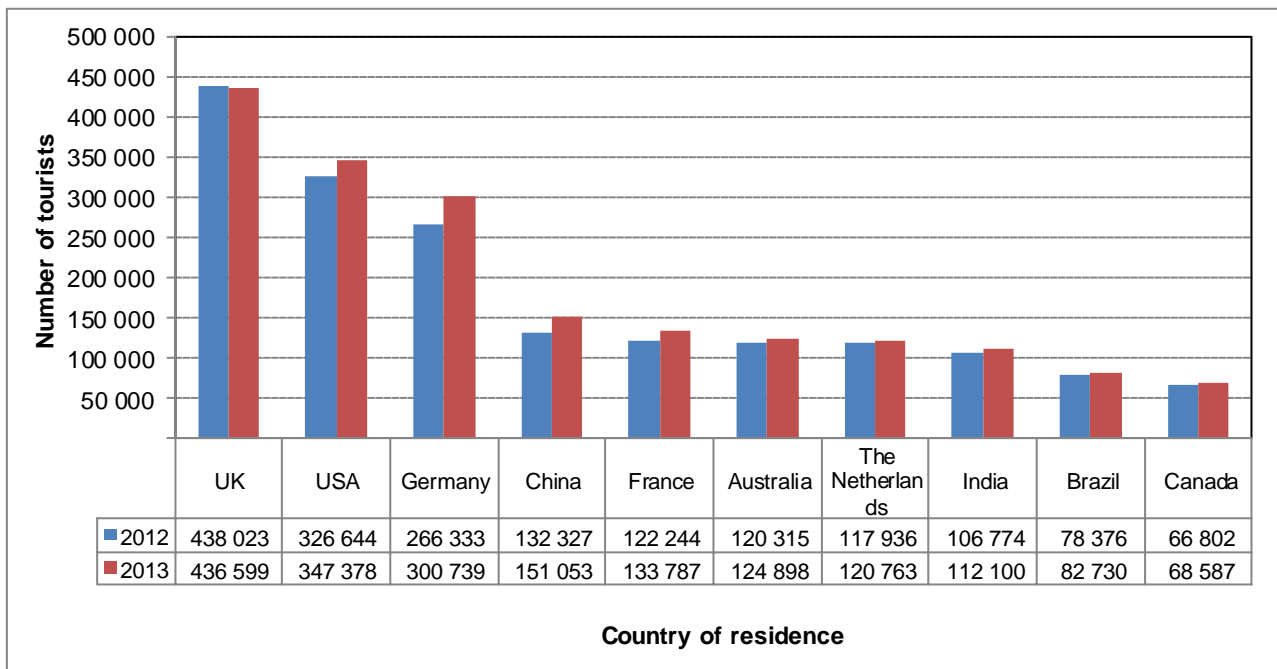


## 4.2 Ten leading countries

### Overseas

As presented in Figure 4.4, the ten leading countries for overseas tourists in 2013 were: United Kingdom (UK), 436 599 (16,4%); United States of America (USA), 347 378 (13,1%); Germany, 300 739 (11,3%); China, 151 053 (5,7%); France, 133 787 (5,0%); Australia, 124 898 (4,7%); The Netherlands, 120 763 (4,5%); India, 112 100 (4,2%); Brazil, 82 730 (3,1%) and Canada, 68 587 (2,6%). A comparison of the 2013 volumes with the 2012 volumes indicates that the number of tourists increased in all the overseas countries except the UK. China had the highest increase of 14,2% while tourists from the UK declined by 0,3%.

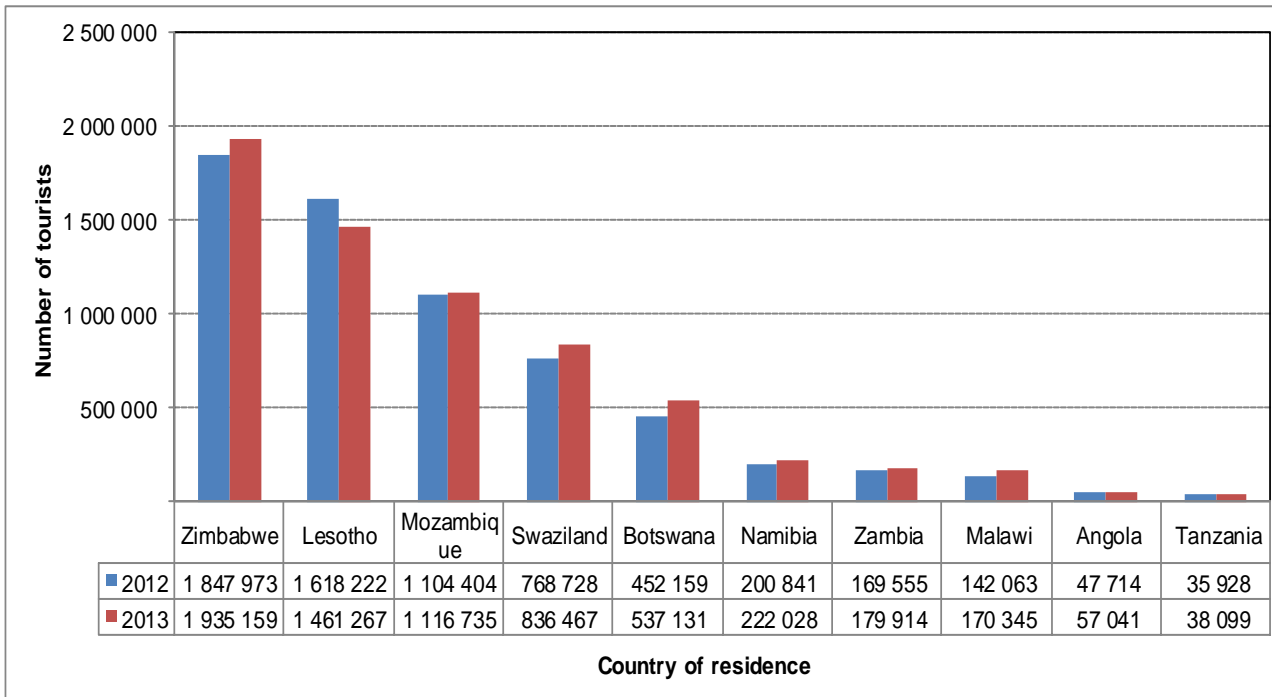
**Figure 4.4: Number of tourists from ten leading overseas countries in 2013 compared to 2012**



### SADC

Figure 4.5 shows the ten leading countries for tourists from the SADC region in 2013. These were: Zimbabwe, 1 935 159 (29,2%); Lesotho, 1 461 267 (22,1%); Mozambique, 1 116 735 (16,9%); Swaziland, 836 467 (12,6%); Botswana, 537 131 (8,1%); Namibia, 222 028 (3,4%); Zambia, 179 914 (2,7%); Malawi, 170 345 (2,6%); Angola, 57 041 (0,9%) and Tanzania, 38 099 (0,6%). All of the SADC countries, showed an increase in the number of tourists from 2012 to 2013 except Lesotho. Malawi had the highest increase of 19,9% while Lesotho declined by 9,7%.

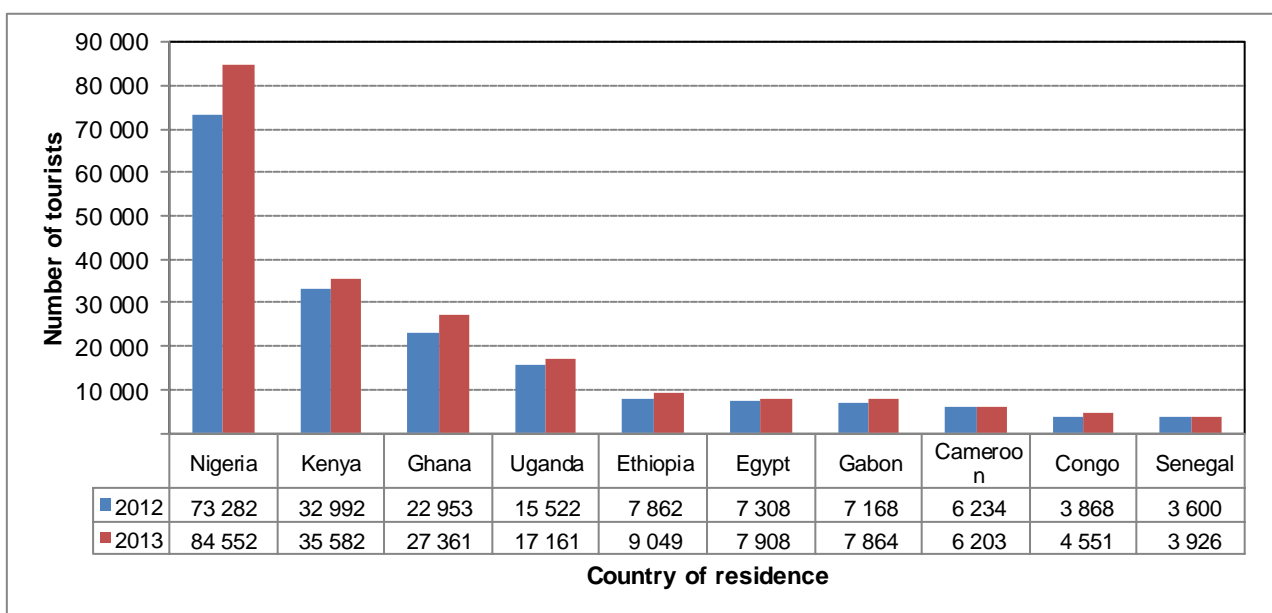
**Figure 4.5: Number of tourists from ten leading SADC countries in 2013 compared to 2012**



**‘Other’ Africa**

The ten leading countries for tourists from ‘other’ African countries in 2013 were: Nigeria, 84 552 (35,6%); Kenya, 35 582 (15,0%); Ghana, 27 361 (11,5%); Uganda, 17 161 (7,2%); Ethiopia, 9 049 (3,8%); Egypt, 7 908 (3,3%); Gabon, 7 864 (3,3%); Cameroon, 6 203 (2,6%); Congo, 4 551 (1,9%) and Senegal, 3 926 (1,7%) (see Figure 4.6). A comparison between the 2013 and 2012 volumes indicates that the number of tourists increased in nine countries but declined in Cameroon. Ghana had the highest increase of 19,2% whereas Cameroon declined by 0,5%.

**Figure 4.6: Number of tourists from ten leading ‘other’ African countries in 2013 compared to 2012**



### 4.3 Mode of travel

#### Place of arrival

Table 4.1 provides information on the number of tourists by mode of travel and place of arrival. A large number of tourists who came to South Africa in 2013 used road transport [6 364 603 (66,7%)], followed by those who came by air [3 164 204 (33,2%)] and tourists who arrived through sea ports [6 987 (0,1%)]. Table 4.1 shows that the road users mainly came in through the Zimbabwe (29,8%) and the Lesotho (23,5%) ports of entry. Namibia had the least number of the 2013 tourists using its ports of entry.

Out of the 3 164 204 tourists that flew into the country, a large proportion of them (84,0%) used O.R. Tambo International Airport. Cape Town and King Shaka international airports were used by 14,6% and 1,1% tourists respectively. Most of the tourists that used sea ports of entry came in through the Durban (60,7%) and Cape Town (30,1%) harbours.

A detailed table including month of travel is shown in Appendix XIV. The highest and lowest volumes of tourists that passed through the Zimbabwe ports of entry were recorded in August and February respectively. However, the highest and lowest volumes of tourists that entered South Africa through the Namibia ports of entry were recorded in December and February respectively. Further details on the number of tourists by country of residence and month of arrival are provided in Appendix XV.

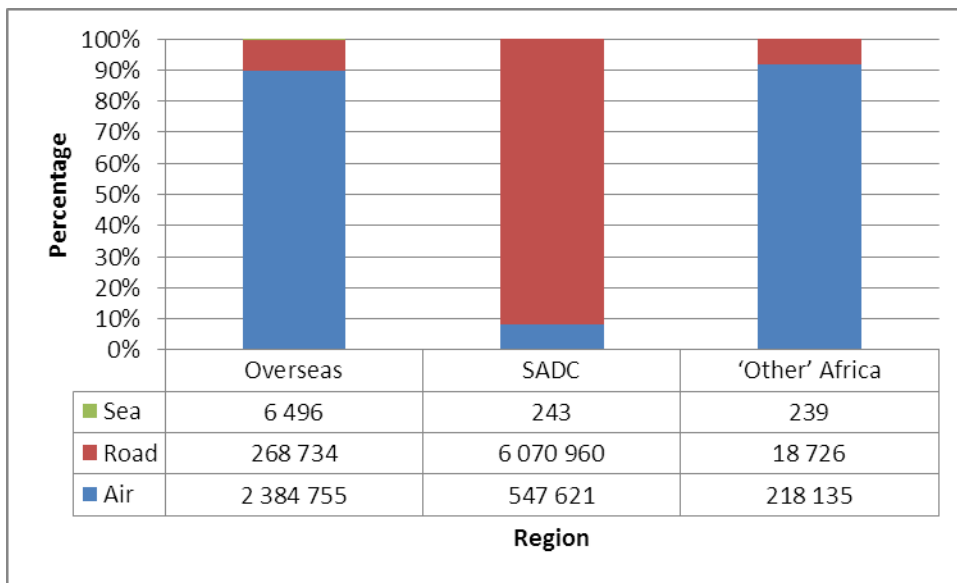
**Table 4.1: Distribution of tourists by mode of travel and place of arrival, 2013**

Mode of travel and place of arrival	Total	%
<b>Total</b>	<b>9 536 568</b>	<b>100,0</b>
<b>Air</b>	<b>3 164 204</b>	<b>100,0</b>
Cape Town International Airport	461 186	14,6
King Shaka International Airport	35 920	1,1
O.R. Tambo International Airport	2 656 522	84,0
Other Airports	10 576	0,3
<b>Road</b>	<b>6 364 603</b>	<b>100,0</b>
Botswana	755 558	11,9
Lesotho	1 495 719	23,5
Mozambique	1 070 603	16,8
Namibia	128 536	2,0
Swaziland	1 017 989	16,0
Zimbabwe	1 896 198	29,8
<b>Sea</b>	<b>6 987</b>	<b>100,0</b>
Cape Town Harbour	2 102	30,1
Durban Harbour	4 240	60,7
Port Elizabeth Harbour	182	2,6
Other Harbours	463	6,6
<b>Unspecified</b>	<b>774</b>	<b>100,0</b>

**Region of residence**

As observed from Figure 4.7, a large proportion of overseas tourists flew [89,6% (2 384 755)] into South Africa compared to [10,1% (268 734)] who came in by road and [0,2% (6 496)] who came by sea. Similarly, tourists from ‘other’ African countries generally entered the country by air [92,0% (218 135)] rather than by road [7,9% (18 726)] or sea [0,1% (239)]. However, the mode of travel used by most tourists from SADC countries was road [91,7% (6 070 960)] compared to air [8,3% (547 621)]. Detailed data on sub-region and country of residence and mode of travel is presented in Appendix XVI.

**Figure 4.7: Distribution of tourists by region of residence and mode of travel, 2013**



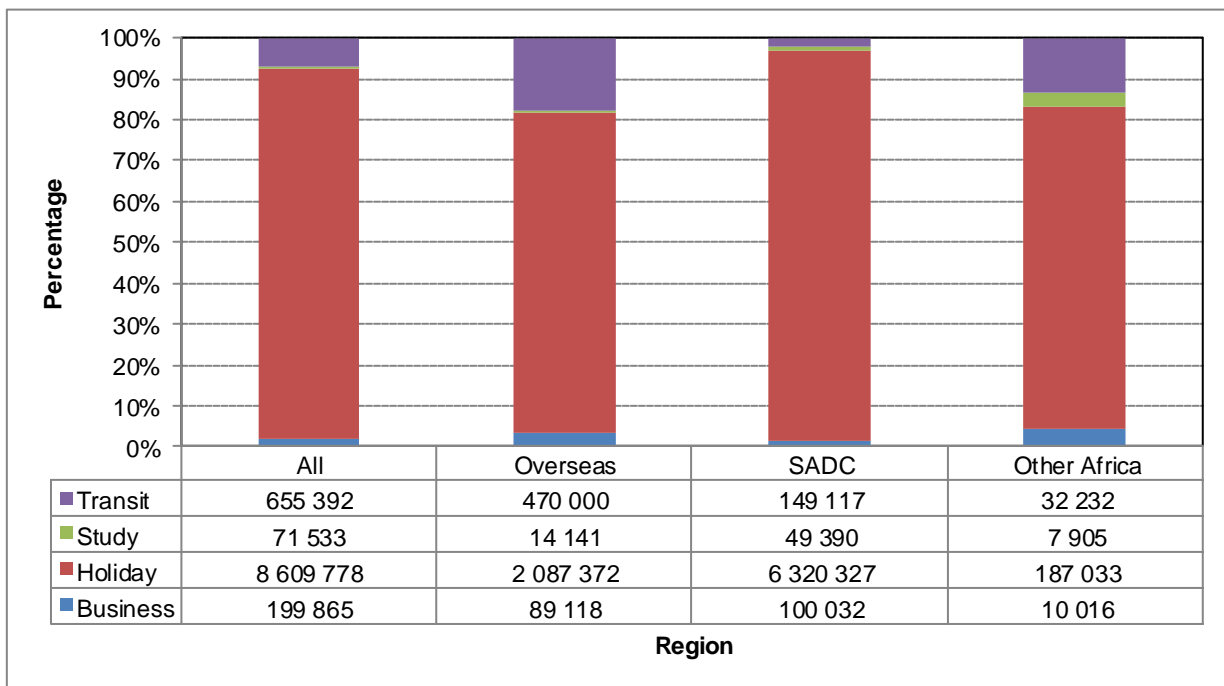
**4.4 Purpose of visit**

**Region of residence**

Besides information in Figure 4.8, reference has been made to data on the main types of tourists that visit South Africa (see Appendix XII) – using the purpose of visit to identify them. In 2013 most tourists came to South Africa for holidays [8 609 778 (90,3%)]. The remaining tourists were in-transit [655 392 (6,9%)]; came for business [199 865 (2,1%)] or were in the country to study [71 533 (0,8%)].

The 2013 data revealed some regional and country differentials with respect to the purpose of visit. For example, [10 016 (4,2%)] tourists from ‘other’ African countries and [89 118 (3,3%)] of tourists from overseas countries came for business compared to [100 032 (1,5%)] from SADC countries. In addition, students made up [7 905 (3,3%)] of tourists from ‘other’ African countries compared to [49 390 (0,7%)] of tourists from SADC countries and [14 141 (0,5%)] of overseas tourists. Detailed data on country of residence and purpose of visit is presented in Appendix XVII.

**Figure 4.8: Percentage distribution of tourists by region and purpose of visit, 2013**



**Country of residence**

Data shown in Figures 4.9 and 4.10 reveal that most overseas tourists on holiday (17,6%) and business persons (20,5%) were UK residents. However, it is shown in Figure 4.11 that the highest proportion of overseas students came from the USA (15,6%).

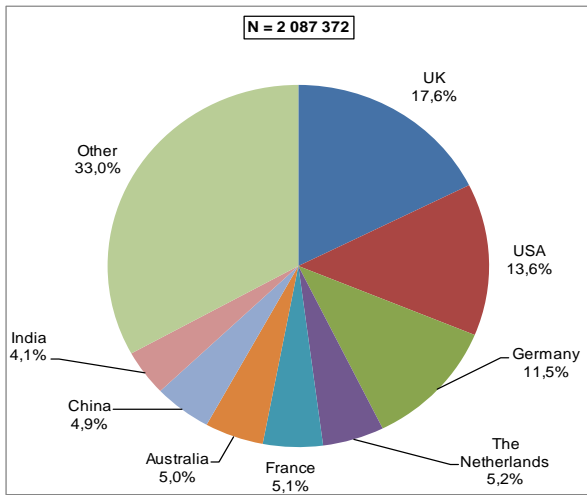
As observed from Figure 4.12, the majority of SADC tourists on holiday were from Zimbabwe (29,7%). Whereas the highest proportion of SADC tourists on business came from Namibia (25,9%); SADC students were mainly from Zimbabwe (20,8%), Swaziland (17,9%) and Namibia (15,5%) as shown in Figure 4.13 and Figure 4.14.

Regarding tourists from ‘other’ African countries, Nigerian residents were the majority on holiday (38,0%) and study (30,5%), whilst those on business were mainly residents of Kenya (23,3%) (see Figures 4.15–4.17).

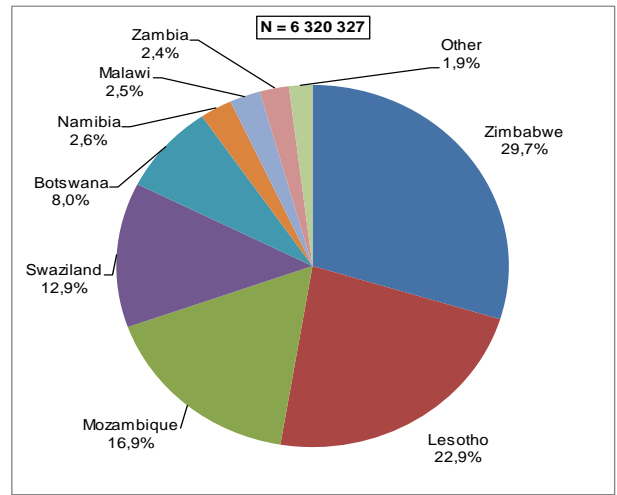
**4.5 Duration of stay**

The number of days tourists spent in South Africa is based on the tourists who arrived and left in the same month. Data in Figure 4.18 indicate that generally tourists from overseas and ‘other’ Africa countries spent on the average more days (about five days per month) in the country compared to SADC residents that spent an average of about two days in a month. The results further show that in June, overseas tourists spent four days in South Africa, on average. Tourists from ‘other’ African countries spent, on average, only five days per month in South Africa. Tourists from SADC countries spent, on average, only two to three days per month.

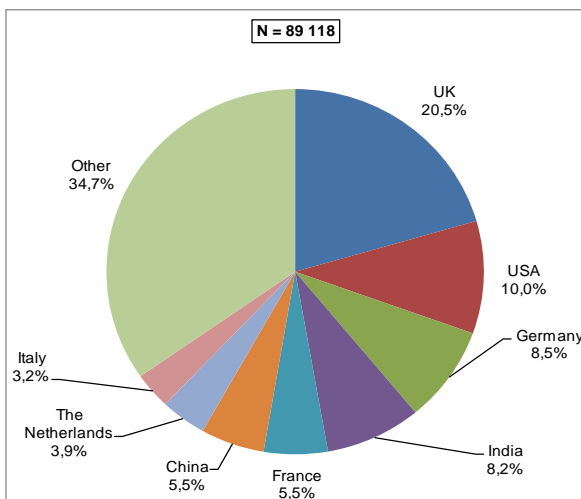
**Figure 4.9: Percentage distribution of tourists from overseas countries on holiday, 2013**



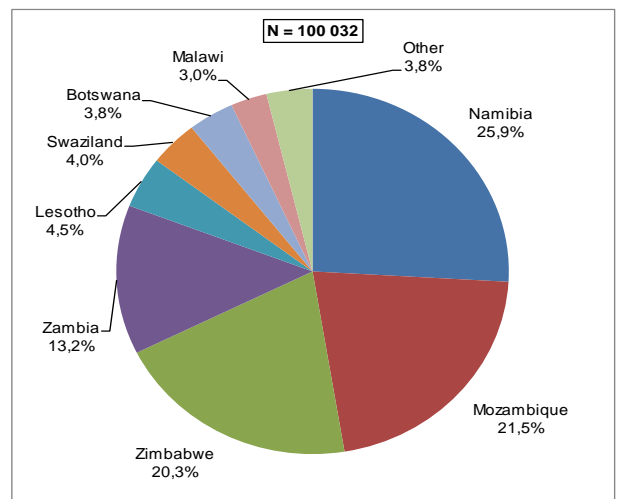
**Figure 4.12: Percentage distribution of tourists from SADC countries on holiday, 2013**



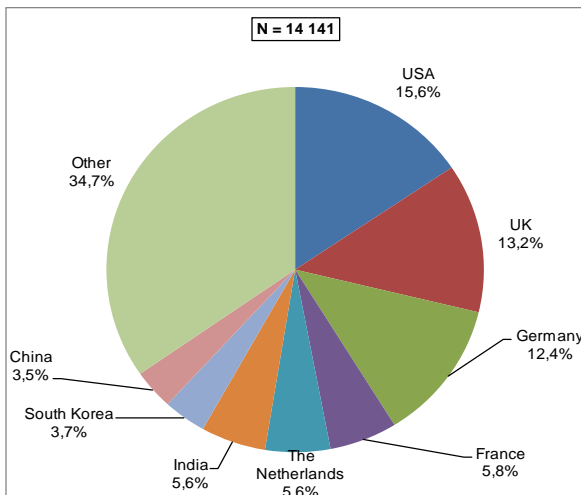
**Figure 4.10: Percentage distribution of tourists from overseas countries on business, 2013**



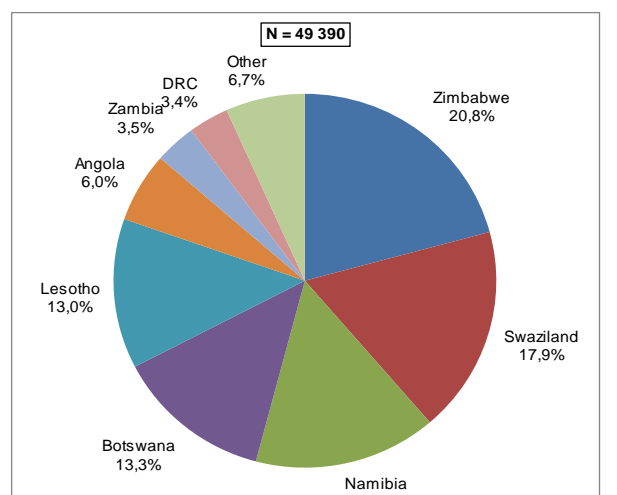
**Figure 4.13: Percentage distribution of tourists from SADC countries on business, 2013**



**Figure 4.11: Percentage distribution of tourists from overseas countries on study, 2013**

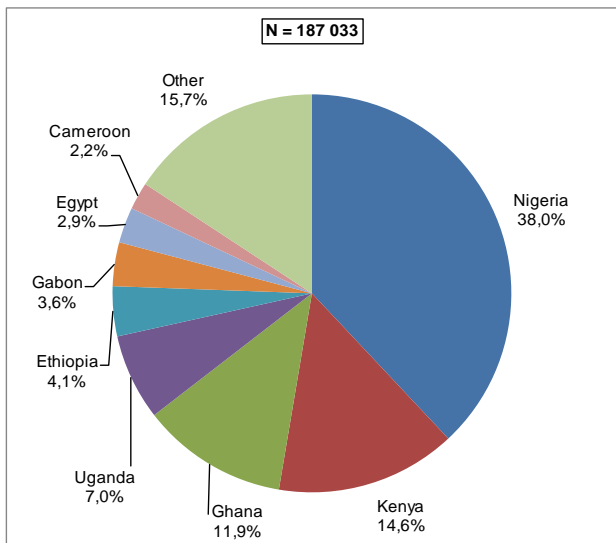


**Figure 4.14: Percentage distribution of tourists from SADC countries on study, 2013**

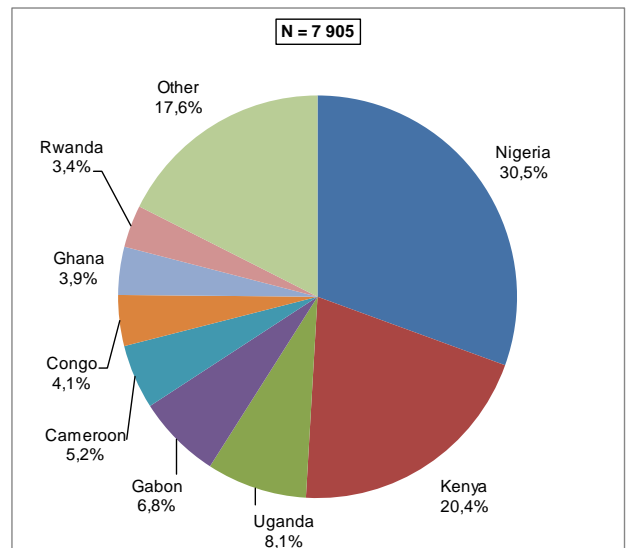




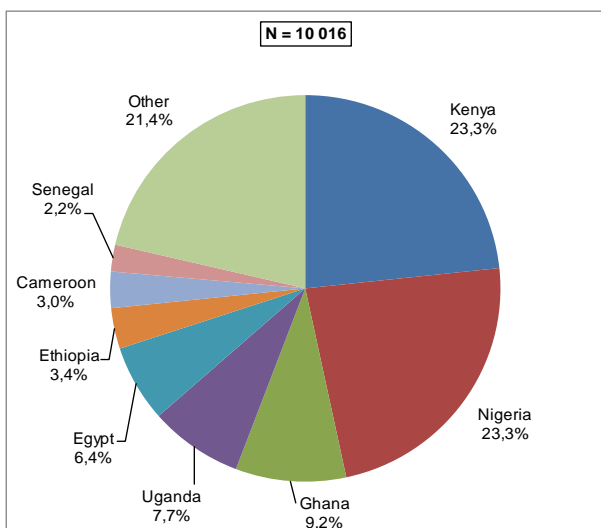
**Figure 4.15: Percentage distribution of tourists from 'other' African countries on holiday, 2013**



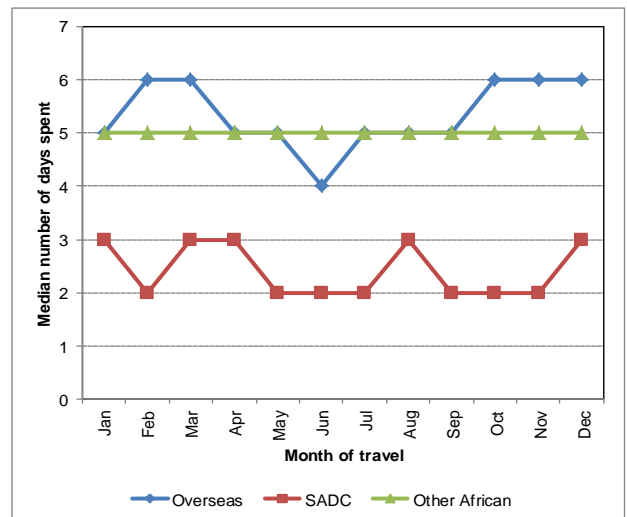
**Figure 4.16: Percentage distribution of tourists from 'other' African countries on study, 2013**



**Figure 4.17: Percentage distribution of tourists from 'other' African countries on business, 2013**



**Figure 4.18: Average (median) number of days tourists spent by month of arrival, 2013**

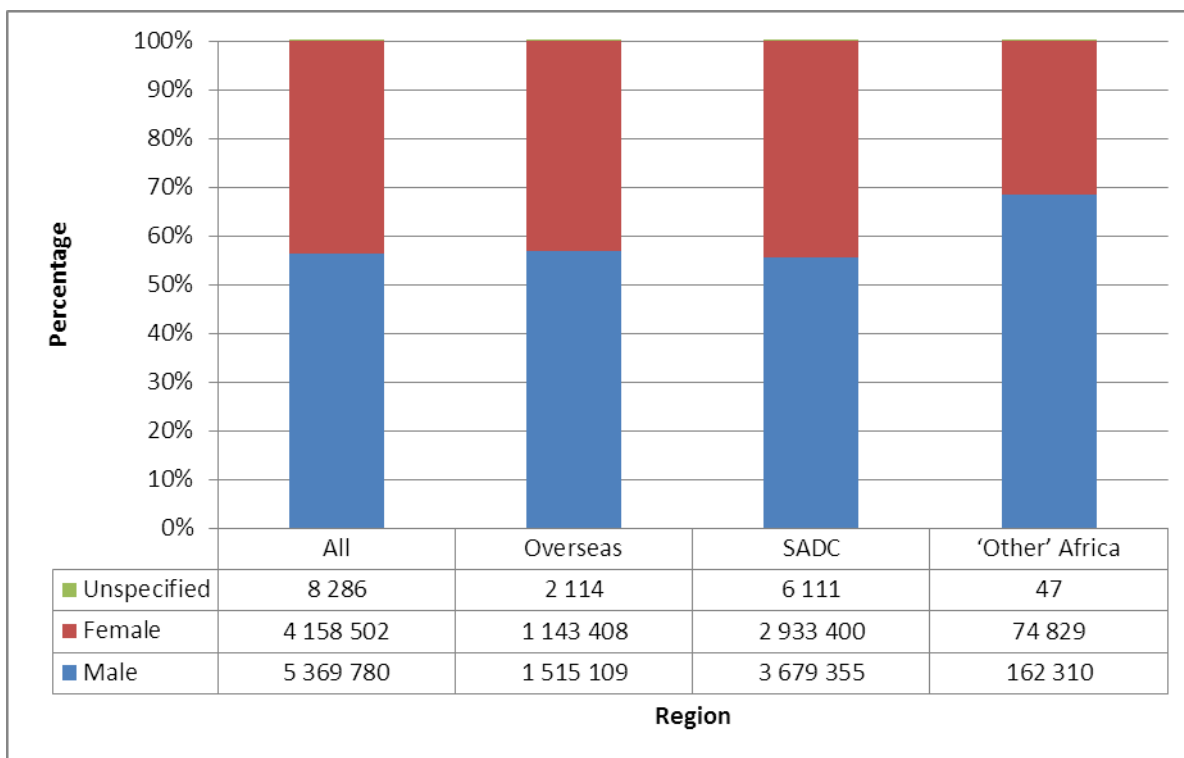


### 4.6 Sex and age distribution

#### Sex

In 2013, as shown in Figure 4.19, there were more male [5 369 780 (56,3%)] than female [4 158 502 (43,6%)] tourists. Although males constituted the majority of overseas [1 515 109 (56,9%)] and SADC [3 679 355 (55,6%)] tourists, the proportion of males was relatively higher among tourists from 'other' African countries [162 310 (68,4%)]. Tourists from SADC countries had the highest proportion of females [2 933 400 (44,3%)]; whereas tourists from 'other' African countries had the lowest proportion [74 829 (31,5%)]. Detailed information on the number of tourists by sex, age and region of residence are shown in Appendix XVIII while the same distribution by month of arrival is shown in Appendix IXX.

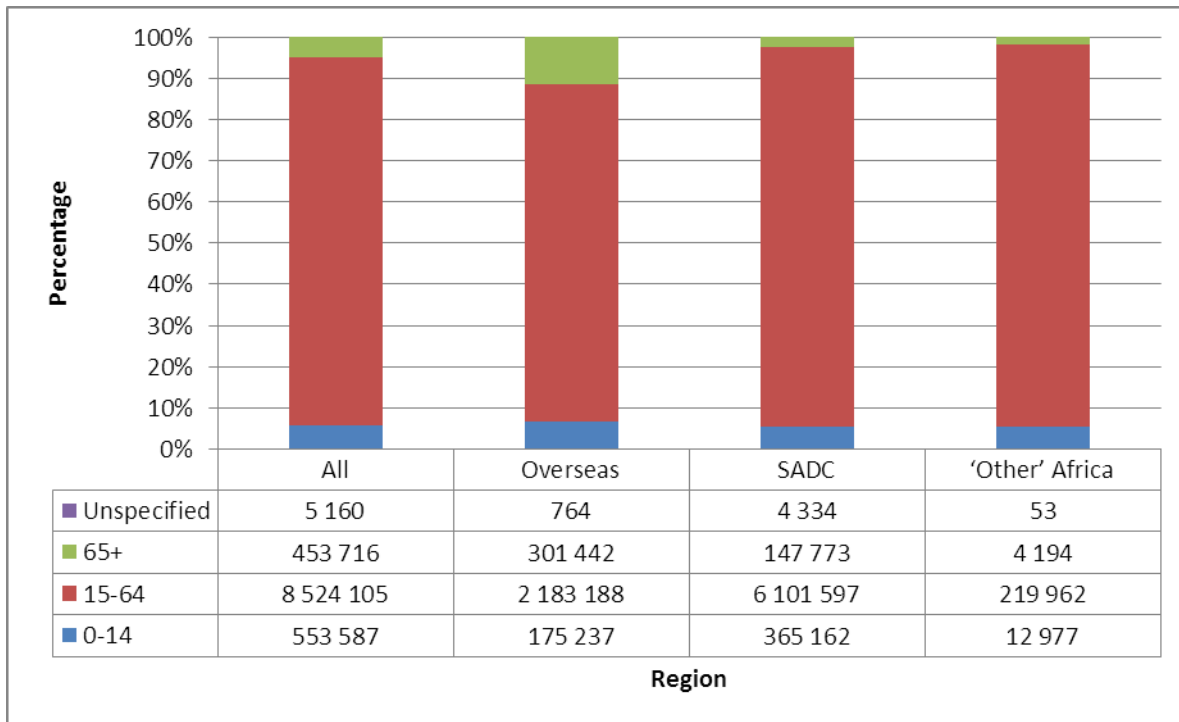
**Figure 4.19: Distribution of tourists by region of residence and sex, 2013**



#### Age

The age distribution indicates that out of all tourists, [8 524 105 (89,4%)] were aged between 15 and 64 years; [553 587 (5,8%)] were aged less than 15 years; and [453 716 (4,8%)] were aged 65 years and over (see Figure 4.20). Taking regions into consideration, the age distribution shows that at least 82,0% of tourists from overseas, SADC and 'other' African countries, were aged between 15 and 64 years. The results further show a relatively higher proportion [11,3% (301 442)] of the elderly among overseas residents compared with [2,2% (147 773)] and 1,8% of residents from SADC and 'other' African countries respectively. Detailed information on the number of tourists by sex, age group and month of arrival is presented in Appendix XVIII.

**Figure 4.20: Distribution of tourists by region of residence and age, 2013**



## 5. Summary

This report provides information collected by DHA immigration officers on South African residents and foreign travellers that passed through South African air, land and sea ports of entry/exit in 2013. The report also presents detailed information on the mode of travel, purpose of visit, length of stay and demographic characteristics of tourists (foreign). A total of 38 610 830 travellers (both South African residents and foreign travellers) entered or departed South Africa in 2013 showing an increase of 9,4% from the 2012 volume of 35 291 559. South African resident departures increased by 2,7%.

Conversely, foreign arrivals increased by 9,9% in 2013. Due to limited data on South African residents, information on tourists is available only from foreign travellers. In 2013, foreign arrivals were made up of 5,5% non-visitors and 94,5% visitors. The visitors were further categorised into same-day visitors (33,4%) and overnight visitors or tourists (66,6%).

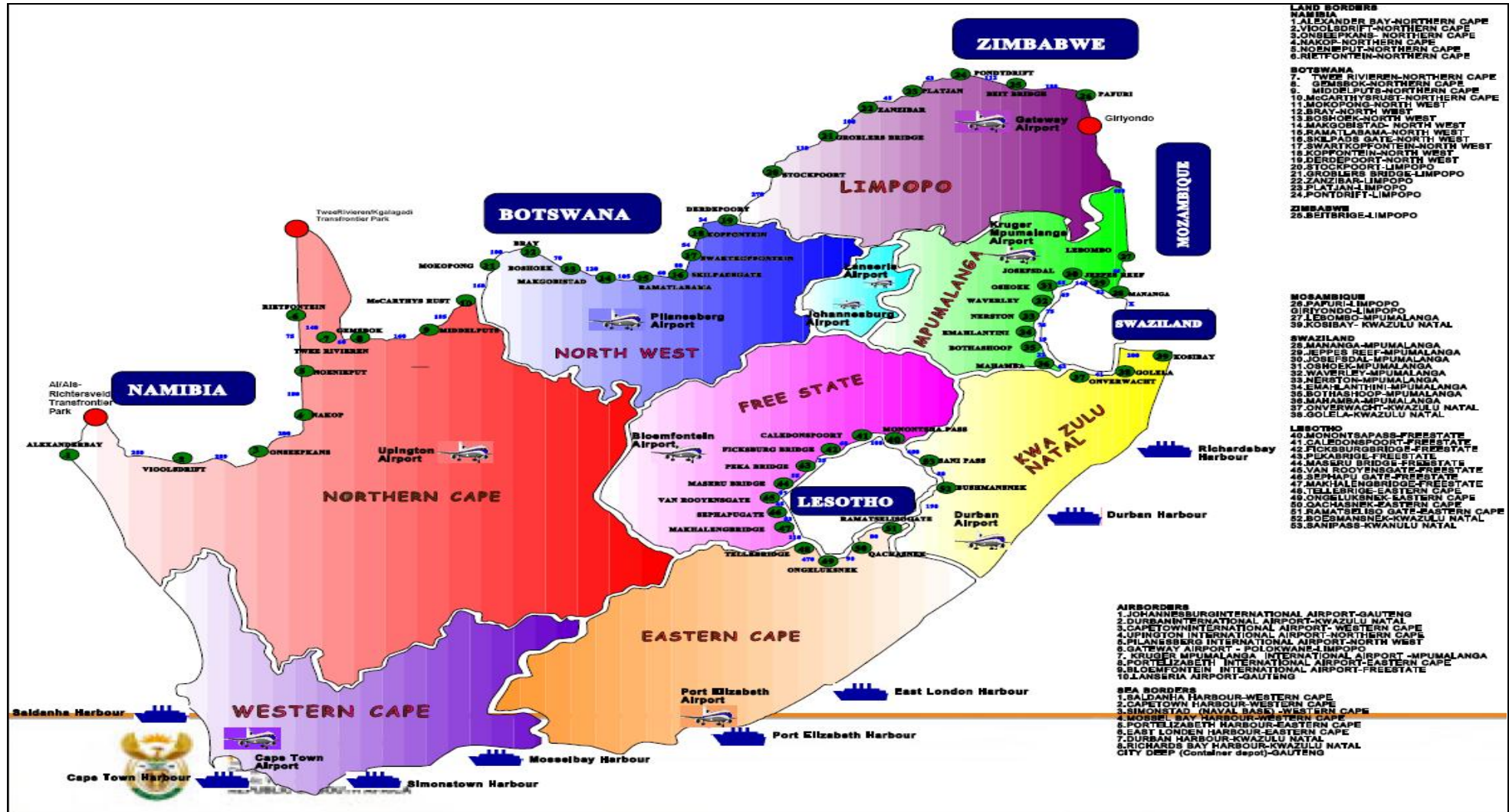
The volume of tourists increased by 3,8% from 9 188 368 in 2012 to 9 536 568 in 2013. The distribution of tourists by region of residence followed a similar pattern as shown in previous years. Thus, a high proportion (69,4%) of tourists was residents from the SADC countries; while 27,9% and 2,5% of tourists were from overseas and 'other' African countries respectively.

Likewise, the 2013 patterns of mode of travel and purpose of visit did not differ greatly from what was observed in 2012 and earlier years. Generally, overseas and 'other' African tourists flew into the country whereas tourists from SADC countries came in by road. Holiday continued to be the main reason for visiting South Africa. An overwhelmingly majority (90,3%) of tourists came for holidays whilst business persons and students constituted less than 3,0% of the 2013 tourists. Overseas business tourists were mainly UK residents and students were mostly USA residents. Residents of Namibia, Mozambique and Zimbabwe made up the bulk of business tourists from SADC countries. SADC students came mainly from Zimbabwe and Swaziland. With regard to 'other' African countries, tourists on business and study were mostly from Kenya and Nigeria respectively.

In 2013, tourists from overseas and 'other' African countries spent, on average, five days per month in South Africa compared to tourists from SADC who spent two days. Tourists continued to be predominantly male (56,3%) and about 89,4% of the 2013 tourists were in the productive age group of 15 to 64 years.

## 6. APPENDICES

### Appendix I: Ports of entry/exit in South Africa



Source: National Department of Home Affairs

**Appendix II: Number of foreign travellers and South African residents by year of travel, 2000–2013**

YEAR	All travellers			South African residents			Foreign travellers		
	Arrivals	Departures	Total	Arrivals	Departures	Total	Arrivals	Departures	Total
2000	9 884 953	9 300 182	19 185 135	3 884 415	3 834 054	7 718 469	6 000 538	5 466 128	11 466 666
2001	9 710 483	9 040 275	18 750 758	3 802 459	3 733 058	7 535 517	5 908 024	5 307 217	11 215 241
2002	10 399 706	9 615 808	20 015 514	3 849 790	3 793 672	7 643 462	6 549 916	5 822 136	12 372 052
2003	7 894 158	7 119 038	15 013 196	1 254 063	1 163 839	2 417 902	6 640 095	5 955 199	12 595 294
2004	7 249 596	6 511 898	13 761 494	434 400	418 585	852 985	6 815 196	6 093 313	12 908 509
2005	9 630 617	8 920 258	18 550 875	2 112 300	2 191 599	4 303 899	7 518 317	6 728 659	14 246 976
2006	12 826 280	11 840 669	24 666 949	4 317 475	4 338 914	8 656 389	8 508 805	7 501 755	16 010 560
2007	13 656 529	12 456 288	26 112 817	4 448 832	4 433 492	8 882 324	9 207 697	8 022 796	17 230 493
2008	14 147 347	12 904 062	27 051 409	4 418 487	4 429 399	8 847 886	9 728 860	8 474 663	18 203 523
2009	14 585 617	13 104 237	27 689 854	4 487 311	4 423 987	8 911 298	10 098 306	8 680 250	18 778 556
2010	16 699 789	15 073 447	31 773 236	5 125 249	5 164 929	10 290 178	11 574 540	9 908 518	21 483 058
2011	17 924 920	16 180 473	34 105 393	5 429 177	5 455 260	10 884 437	12 495 743	10 725 213	23 220 956
2012	18 766 958	16 524 601	35 291 559	4 971 428	5 030 768	10 002 196	13 795 530	11 493 833	25 289 363
2013	20 245 051	18 365 779	38 610 830	5 090 060	5 167 651	10 257 711	15 154 991	13 198 128	28 353 119

**Appendix III: Number of arrivals and departures of South African residents by mode of travel and place of arrival or departure, 2013**

<b>Mode of travel and place of arrival or departure</b>	<b>Arrivals</b>	<b>Departures</b>	<b>Percentage of arrivals</b>	<b>Percentage of departures</b>
<b>Total</b>	<b>5 090 060</b>	<b>5 167 651</b>	-	-
<b>Air</b>	<b>1 800 338</b>	<b>1 810 878</b>	<b>100,0</b>	<b>100,0</b>
Cape Town	208 715	210 209	11,6	11,6
King Shaka	76 724	80 854	4,3	4,5
O.R. Tambo	1 485 372	1 489 135	82,5	82,2
Other Airports	29 527	30 680	1,6	1,7
<b>Road</b>	<b>3 271 463</b>	<b>3 341 984</b>	<b>100,0</b>	<b>100,0</b>
Botswana	553 078	561 913	16,9	16,8
Lesotho	951 029	989 435	29,1	29,6
Mozambique	619 755	630 264	18,9	18,9
Namibia	151 530	153 480	4,6	4,6
Swaziland	773 197	780 842	23,6	23,4
Zimbabwe	222 874	226 050	6,8	6,8
<b>Sea</b>	<b>17 861</b>	<b>14 321</b>	<b>100,0</b>	<b>100,0</b>
Cape Town Harbour	6 017	5 810	33,7	40,6
Durban Harbour	11 796	8 445	66,0	59,0
Port Elizabeth Harbour	48	66	0,3	0,5
<b>Unspecified</b>	<b>398</b>	<b>468</b>	-	-

**Appendix IV: Number of South African residents by mode of travel, place and month of arrival, 2013**

Mode of travel and place of arrival	Total	Month of arrival											
		Jan	Feb	Mar	Apr	May	Jun	Jul	Aug	Sep	Oct	Nov	Dec
<b>Total</b>	<b>5 090 060</b>	<b>535 415</b>	<b>301 237</b>	<b>388 245</b>	<b>436 896</b>	<b>368 172</b>	<b>406 096</b>	<b>490 953</b>	<b>400 857</b>	<b>437 427</b>	<b>401 853</b>	<b>399 153</b>	<b>523 756</b>
<b>Air</b>	<b>1 800 338</b>	<b>173 374</b>	<b>104 485</b>	<b>139 965</b>	<b>149 666</b>	<b>140 254</b>	<b>145 757</b>	<b>192 756</b>	<b>141 124</b>	<b>156 333</b>	<b>153 051</b>	<b>131 650</b>	<b>171 923</b>
Cape Town	208 715	18 446	11 824	16 627	16 893	15 814	16 772	23 620	14 936	18 744	17 650	15 835	21 554
King Shaka	76 724	6 524	4 934	5 971	6 975	5 686	6 045	9 604	5 669	3 485	7 124	5 746	8 961
O.R.Tambo	1 485 372	146 149	85 753	114 890	123 100	115 753	120 461	156 954	117 770	131 835	125 419	107 530	139 758
Other Airports	29 527	2 255	1 974	2 477	2 698	3 001	2 479	2 578	2 749	2 269	2 858	2 539	1 650
<b>Road</b>	<b>3 271 463</b>	<b>355 206</b>	<b>195 180</b>	<b>247 949</b>	<b>279 560</b>	<b>227 747</b>	<b>260 161</b>	<b>298 073</b>	<b>259 601</b>	<b>280 912</b>	<b>248 438</b>	<b>267 164</b>	<b>351 472</b>
Botswana	553 078	53 039	32 257	42 031	47 848	37 242	41 082	48 367	44 797	47 223	39 948	64 770	54 474
Lesotho	951 029	93 609	65 202	74 898	80 235	64 569	77 315	80 580	79 538	81 815	76 775	77 180	99 313
Mozambique	619 755	92 584	31 405	43 511	54 190	43 631	46 857	58 888	38 962	49 492	47 530	45 015	67 690
Namibia	151 530	13 907	7 084	10 850	12 874	11 086	13 588	20 953	11 650	13 807	9 903	9 514	16 314
Swaziland	773 197	73 160	46 734	61 566	63 640	56 261	66 529	68 629	65 334	68 979	57 699	56 801	87 865
Zimbabwe	222 874	28 907	12 498	15 093	20 773	14 958	14 790	20 656	19 320	19 596	16 583	13 884	25 816
<b>Sea</b>	<b>17 861</b>	<b>6 835</b>	<b>1 572</b>	<b>331</b>	<b>7 670</b>	<b>171</b>	<b>178</b>	<b>124</b>	<b>132</b>	<b>182</b>	<b>364</b>	<b>128</b>	<b>174</b>
Cape Town	6 017	3 214	1 554	83	93	105	119	80	108	139	329	86	107
Durban	11 796	3 614	16	246	7 575	65	48	39	24	40	31	41	57
Port Elizabeth	48	7	2	2	2	1	11	5	-	3	4	1	10
<b>Unspecified</b>	<b>398</b>	<b>-</b>	<b>-</b>	<b>-</b>	<b>-</b>	<b>-</b>	<b>-</b>	<b>-</b>	<b>-</b>	<b>-</b>	<b>-</b>	<b>211</b>	<b>187</b>



**Appendix V: Number of South African residents by mode of travel, place and month of arrival, 2013**

Mode of travel and place of departure	Total	Month of departure											
		Jan	Feb	Mar	Apr	May	Jun	Jul	Aug	Sep	Oct	Nov	Dec
<b>Total</b>	<b>5 167 651</b>	<b>340 125</b>	<b>304 191</b>	<b>460 973</b>	<b>390 292</b>	<b>381 397</b>	<b>486 245</b>	<b>408 622</b>	<b>434 949</b>	<b>442 597</b>	<b>387 025</b>	<b>415 547</b>	<b>715 688</b>
<b>Air</b>	<b>1 810 878</b>	<b>129 483</b>	<b>106 703</b>	<b>156 280</b>	<b>150 861</b>	<b>141 615</b>	<b>188 780</b>	<b>142 514</b>	<b>150 873</b>	<b>165 710</b>	<b>135 518</b>	<b>128 830</b>	<b>213 711</b>
Cape Town	210 209	12 772	12 018	19 107	16 606	17 525	23 308	16 322	16 895	20 268	14 592	14 355	26 441
King Shaka	80 854	4 309	5 239	7 034	6 391	6 184	8 598	6 321	6 889	5 198	5 994	6 089	12 608
O.R. Tambo	1 489 135	109 885	87 396	127 472	125 234	115 016	154 081	117 149	124 301	137 889	111 897	106 165	172 650
Other Airports	30 680	2 517	2 050	2 667	2 630	2 890	2 793	2 722	2 788	2 355	3 035	2 221	2 012
<b>Road</b>	<b>3 341 984</b>	<b>205 975</b>	<b>196 178</b>	<b>303 718</b>	<b>233 894</b>	<b>239 567</b>	<b>297 342</b>	<b>265 944</b>	<b>283 857</b>	<b>276 568</b>	<b>251 063</b>	<b>286 289</b>	<b>501 589</b>
Botswana	561 913	33 806	32 746	49 594	42 395	39 078	47 504	42 885	46 432	47 125	40 572	69 209	70 567
Lesotho	989 435	66 448	66 335	90 552	67 624	69 914	82 661	80 423	89 699	81 752	80 440	84 800	128 787
Mozambique	630 264	36 528	31 374	57 347	42 690	43 472	57 089	49 141	41 558	49 873	46 881	46 869	127 442
Namibia	153 480	8 922	7 286	13 796	10 628	11 322	21 635	13 306	11 831	13 852	9 460	9 655	21 787
Swaziland	780 842	51 530	46 318	71 900	54 274	60 626	69 821	63 609	73 013	64 880	58 181	61 079	105 611
Zimbabwe	226 050	8 741	12 119	20 529	16 283	15 155	18 632	16 580	21 324	19 086	15 529	14 677	47 395
<b>Sea</b>	<b>14 321</b>	<b>4 667</b>	<b>1 310</b>	<b>975</b>	<b>5 537</b>	<b>215</b>	<b>123</b>	<b>164</b>	<b>219</b>	<b>319</b>	<b>444</b>	<b>211</b>	<b>137</b>
Cape Town	5 810	2 851	1 268	143	157	178	86	100	152	274	388	135	78
Durban	8 445	1 786	36	831	5 378	33	36	60	57	43	51	75	59
Port Elizabeth	66	30	6	1	2	4	1	4	10	2	5	1	-
<b>Unspecified</b>	<b>468</b>	<b>-</b>	<b>-</b>	<b>-</b>	<b>-</b>	<b>-</b>	<b>-</b>	<b>-</b>	<b>-</b>	<b>-</b>	<b>-</b>	<b>217</b>	<b>251</b>



**Appendix VI: Number of foreign arrivals and departures by mode of travel and place of arrival or departure, 2013**

<b>Mode of travel and place of arrival or departure</b>	<b>Arrivals</b>	<b>Departures</b>	<b>Percentage of arrivals</b>	<b>Percentage of departures</b>
<b>Total</b>	<b>15 154 991</b>	<b>13 198 128</b>	<b>-</b>	<b>-</b>
<b>Air</b>	<b>3 716 843</b>	<b>3 005 557</b>	<b>100,0</b>	<b>100,0</b>
Cape Town	517 197	510 920	13,9	17,0
King Shaka	50 263	50 947	1,4	1,7
O.R. Tambo	3 130 098	2 424 258	84,2	80,7
Other Airports	19 285	19 432	0,5	0,6
<b>Road</b>	<b>11 389 972</b>	<b>10 154 211</b>	<b>100,0</b>	<b>100,0</b>
Botswana	1 207 209	1 175 638	10,6	11,6
Lesotho	3 247 489	2 783 860	28,5	27,4
Mozambique	1 797 005	1 567 328	15,8	15,4
Namibia	174 318	174 550	1,5	1,7
Swaziland	1 702 837	1 604 589	15,0	15,8
Zimbabwe	3 261 114	2 848 246	28,6	28,0
<b>Sea</b>	<b>47 155</b>	<b>37 367</b>	<b>100,0</b>	<b>100,0</b>
Cape Town	21 033	18 423	44,6	49,3
Durban	22 964	16 793	48,7	44,9
Port Elizabeth	1 366	2 131	2,9	5,7
Other Harbours	1 792	20	3,8	0,1
<b>Unspecified</b>	<b>1 021</b>	<b>993</b>	<b>-</b>	<b>-</b>

**Appendix VII: Number of foreign arrivals by mode of travel, place and month of arrival, 2013**

Mode of travel and place of arrival	Total	Month of arrival											
		Jan	Feb	Mar	Apr	May	Jun	Jul	Aug	Sep	Oct	Nov	Dec
<b>Total</b>	<b>15 154 991</b>	<b>1 274 134</b>	<b>1 101 684</b>	<b>1 235 930</b>	<b>1 278 502</b>	<b>1 133 427</b>	<b>1 109 391</b>	<b>1 289 022</b>	<b>1 321 184</b>	<b>1 252 142</b>	<b>1 283 885</b>	<b>1 338 809</b>	<b>1 536 881</b>
<b>Air</b>	<b>3 716 843</b>	<b>297 915</b>	<b>310 758</b>	<b>326 017</b>	<b>273 633</b>	<b>252 189</b>	<b>240 095</b>	<b>298 248</b>	<b>330 286</b>	<b>315 561</b>	<b>349 119</b>	<b>354 955</b>	<b>368 067</b>
Cape Town	517 197	42 678	65 302	62 466	33 259	25 313	20 093	27 127	29 156	31 260	44 660	66 728	69 155
King Shaka	50 263	2 229	4 558	5 561	3 975	3 899	3 534	5 079	4 537	2 109	5 180	4 214	5 388
O.R. Tambo	3 130 098	251 339	239 367	256 646	234 898	221 544	214 494	264 449	294 884	280 935	297 552	282 699	291 291
Other Airports	19 285	1 669	1 531	1 344	1 501	1 433	1 974	1 593	1 709	1 257	1 727	1 314	2 233
<b>Road</b>	<b>11 389 972</b>	<b>972 473</b>	<b>785 538</b>	<b>906 391</b>	<b>997 395</b>	<b>877 943</b>	<b>866 551</b>	<b>987 323</b>	<b>987 485</b>	<b>933 460</b>	<b>930 356</b>	<b>980 223</b>	<b>1 164 834</b>
Botswana	1 207 209	95 040	73 549	111 805	92 822	90 613	87 421	104 174	109 035	102 765	94 953	102 413	142 619
Lesotho	3 247 489	321 778	242 200	269 061	292 678	249 159	254 893	287 249	253 638	254 304	253 709	266 937	301 883
Mozambique	1 797 005	187 857	117 800	131 131	148 817	136 965	136 152	156 831	128 347	144 967	155 694	168 177	184 267
Namibia	174 318	14 637	10 067	14 372	14 787	13 959	11 011	13 486	16 558	13 273	13 114	14 256	24 798
Swaziland	1 702 837	138 671	118 141	138 848	137 757	133 438	129 671	146 381	158 696	142 526	140 145	145 506	173 057
Zimbabwe	3 261 114	214 490	223 781	241 174	310 534	253 809	247 403	279 202	321 211	275 625	272 741	282 934	338 210
<b>Sea</b>	<b>47 155</b>	<b>3 727</b>	<b>5 375</b>	<b>3 505</b>	<b>7 456</b>	<b>3 278</b>	<b>2 730</b>	<b>3 369</b>	<b>3 308</b>	<b>3 024</b>	<b>4 303</b>	<b>3 295</b>	<b>3 785</b>
Cape Town	21 033	2 838	3 809	1 716	1 201	1 455	1 153	1 461	1 199	1 132	2 218	1 352	1 499
Durban Port	22 964	597	1 221	1 422	5 926	1 505	1 441	1 666	1 858	1 688	1 824	1 821	1 995
Elizabeth	1 366	109	94	75	111	115	60	110	124	71	84	122	291
Other	1 792	183	251	292	218	203	76	132	127	133	177	-	-
<b>Unspecified</b>	<b>1 021</b>	<b>19</b>	<b>13</b>	<b>17</b>	<b>18</b>	<b>17</b>	<b>15</b>	<b>82</b>	<b>105</b>	<b>97</b>	<b>107</b>	<b>336</b>	<b>195</b>

**Appendix VIII: Number of foreign departures by mode of travel, place and month of departure, 2013**

Mode of travel and place of departure	Total	Month of arrival											
		Jan	Feb	Mar	Apr	May	Jun	Jul	Aug	Sep	Oct	Nov	Dec
<b>Total</b>	<b>13 198 128</b>	<b>898 324</b>	<b>935 939</b>	<b>1 128 559</b>	<b>1 077 538</b>	<b>1 013 538</b>	<b>992 301</b>	<b>1 097 094</b>	<b>1 145 486</b>	<b>1 083 862</b>	<b>1 112 304</b>	<b>1 187 814</b>	<b>1 525 369</b>
<b>Air</b>	<b>3 005 557</b>	<b>250 758</b>	<b>257 242</b>	<b>287 443</b>	<b>256 528</b>	<b>218 149</b>	<b>200 490</b>	<b>220 314</b>	<b>258 409</b>	<b>232 414</b>	<b>254 508</b>	<b>287 977</b>	<b>281 325</b>
Cape Town	510 920	47 502	62 846	65 686	42 135	27 624	19 492	24 688	29 054	28 912	38 250	65 481	59 250
King Shaka	50 947	3 690	4 078	5 289	5 500	4 080	3 571	4 213	5 386	1 963	4 388	4 833	3 956
O.R. Tambo	2 424 258	198 160	188 510	215 023	207 344	184 962	175 678	189 423	222 331	200 111	210 271	216 447	215 998
Other	19 432	1 406	1 808	1 445	1 549	1 483	1 749	1 990	1 638	1 428	1 599	1 216	2 121
<b>Road</b>	<b>10 154 211</b>	<b>643 620</b>	<b>675 390</b>	<b>838 138</b>	<b>817 955</b>	<b>792 712</b>	<b>789 460</b>	<b>873 875</b>	<b>884 127</b>	<b>848 492</b>	<b>854 153</b>	<b>895 814</b>	<b>1 240 475</b>
Botswana	1 175 638	83 358	71 418	97 273	101 472	88 181	85 922	101 333	100 815	103 787	97 618	97 714	146 747
Lesotho	2 783 860	209 281	205 515	250 298	214 743	214 956	213 387	250 667	230 336	220 299	232 101	237 058	305 219
Mozambique	1 567 328	94 689	93 029	118 404	117 669	116 997	125 045	131 238	117 597	129 692	138 486	156 055	228 427
Namibia	174 550	16 747	10 191	14 123	13 034	16 144	12 678	12 641	15 935	14 333	13 498	14 635	20 591
Swaziland	1 604 589	122 939	108 281	135 650	120 405	128 936	124 601	134 771	148 100	140 660	133 801	137 580	168 865
Zimbabwe	2 848 246	116 606	186 956	222 390	250 632	227 498	227 827	243 225	271 344	239 721	238 649	252 772	370 626
<b>Sea</b>	<b>37 367</b>	<b>3 946</b>	<b>3 307</b>	<b>2 977</b>	<b>3 055</b>	<b>2 676</b>	<b>2 351</b>	<b>2 905</b>	<b>2 950</b>	<b>2 956</b>	<b>3 643</b>	<b>3 384</b>	<b>3 217</b>
Cape Town	18 423	2 663	1 866	1 497	1 316	1 394	1 047	1 308	1 187	1 347	1 824	1 498	1 476
Durban Port	16 793	624	930	1 407	1 646	1 168	1 242	1 495	1 651	1 534	1 715	1 752	1 629
Elizabeth	2 131	659	511	73	92	113	62	102	112	69	92	134	112
Other	20	-	-	-	1	1	-	-	-	6	12	-	-
<b>Unspecified</b>	<b>993</b>	<b>-</b>	<b>-</b>	<b>1</b>	<b>-</b>	<b>1</b>	<b>-</b>	<b>-</b>	<b>-</b>	<b>-</b>	<b>-</b>	<b>639</b>	<b>352</b>

**Appendix IX: Number of foreign arrivals by purpose of visit and month of arrival, 2013**

Purpose of visit	Total	Month of arrival											
		Jan	Feb	Mar	Apr	May	Jun	Jul	Aug	Sep	Oct	Nov	Dec
<b>Total</b>	<b>15 154 991</b>	<b>1 274 134</b>	<b>1 101 684</b>	<b>1 235 930</b>	<b>1 278 502</b>	<b>1 133 427</b>	<b>1 109 391</b>	<b>1 289 022</b>	<b>1 321 184</b>	<b>1 252 142</b>	<b>1 283 885</b>	<b>1 338 809</b>	<b>1 536 881</b>
Business	214 855	11 984	17 675	16 801	16 229	17 758	15 091	14 930	13 354	15 700	16 842	36 554	21 937
Holiday	13 363 685	1 080 332	981 517	1 109 726	1 126 762	1 010 308	986 234	1 137 983	1 159 424	1 089 471	1 125 887	1 167 766	1 388 275
Study	79 726	14 160	7 744	4 559	8 018	4 166	3 920	13 525	5 749	6 706	4 558	3 315	3 306
Work	349 068	53 389	24 988	24 823	32 615	26 568	25 865	27 359	29 535	28 068	27 029	25 117	23 712
Transit	659 641	48 008	38 377	45 582	47 601	40 180	41 127	51 733	73 683	70 378	69 204	71 702	62 066
Other	79 237	9 244	5 688	6 997	6 910	5 910	5 571	7 321	6 648	6 308	6 462	5 900	6 278
Unspecified	408 779	57 017	25 695	27 442	40 367	28 537	31 583	36 171	32 791	35 511	33 903	28 455	31 307

**Appendix X: Number of foreign arrivals by type of visitor and month of arrival, 2013**

Type of visitor	Total	Month of arrival											
		Jan	Feb	Mar	Apr	May	Jun	Jul	Aug	Sep	Oct	Nov	Dec
<b>Total</b>	<b>15 154 991</b>	<b>1 274 134</b>	<b>1 101 684</b>	<b>1 235 930</b>	<b>1 278 502</b>	<b>1 133 427</b>	<b>1 109 391</b>	<b>1 289 022</b>	<b>1 321 184</b>	<b>1 252 142</b>	<b>1 283 885</b>	<b>1 338 809</b>	<b>1 536 881</b>
<b>Non-visitors</b>	<b>837 083</b>	<b>119 650</b>	<b>56 371</b>	<b>59 262</b>	<b>79 892</b>	<b>61 015</b>	<b>63 019</b>	<b>70 851</b>	<b>68 974</b>	<b>69 887</b>	<b>67 394</b>	<b>59 472</b>	<b>61 296</b>
<b>Visitors</b>	<b>14 317 908</b>	<b>1 154 484</b>	<b>1 045 313</b>	<b>1 176 668</b>	<b>1 198 610</b>	<b>1 072 412</b>	<b>1 046 372</b>	<b>1 218 171</b>	<b>1 252 210</b>	<b>1 182 255</b>	<b>1 216 491</b>	<b>1 279 337</b>	<b>1 475 585</b>
Same day	4 781 340	303 725	329 544	361 593	395 135	372 754	369 287	429 003	423 189	398 322	421 997	444 141	532 650
Tourist	9 536 568	850 759	715 769	815 075	803 475	699 658	677 085	789 168	829 021	783 933	794 494	835 196	942 935

**Appendix XI: Number of same day visitors by mode of travel, region of residence and purpose of visit, 2013**

Mode of travel and region of residence	Total	Purpose of visit			
		Business	Holiday	Study	Transit
<b>Total</b>	<b>4 781 340</b>	<b>14 990</b>	<b>4 753 908</b>	<b>8 193</b>	<b>4 249</b>
<b>Air</b>	<b>209 990</b>	<b>3 362</b>	<b>202 897</b>	<b>341</b>	<b>3 390</b>
Overseas	141 579	1 775	137 447	71	2 286
SADC	62 494	1 450	59 872	209	963
'Other' Africa	5 136	121	4 828	61	126
Unspecified	781	16	750		15
<b>Road</b>	<b>4 570 052</b>	<b>11 628</b>	<b>4 550 568</b>	<b>7 852</b>	<b>4</b>
Overseas	79 338	56	78 996	284	2
SADC	4 479 597	11 552	4 460 647	7 396	2
'Other' Africa	8 753	17	8 566	170	-
Unspecified	2 364	3	2 359	2	-
<b>Sea</b>	<b>1 287</b>	<b>-</b>	<b>432</b>	<b>-</b>	<b>855</b>
Overseas	1 211	-	367	-	844
SADC	58	-	57	-	1
'Other' Africa	17	-	8	-	9
Unspecified	1	-		-	1
<b>Unspecified</b>	<b>11</b>	<b>-</b>	<b>11</b>	<b>-</b>	<b>-</b>

**Appendix XII: Number of tourist arrivals by purpose of visit and month of arrival, 2013**

Purpose of visit	Total	Month of arrival											
		Jan	Feb	Mar	Apr	May	Jun	Jul	Aug	Sep	Oct	Nov	Dec
<b>Total</b>	<b>9 536 568</b>	<b>850 759</b>	<b>715 769</b>	<b>815 075</b>	<b>803 475</b>	<b>699 658</b>	<b>677 085</b>	<b>789 168</b>	<b>829 021</b>	<b>783 933</b>	<b>794 494</b>	<b>835 196</b>	<b>942 935</b>
Business	199 865	11 370	16 790	15 813	15 294	16 718	14 002	14 124	12 699	15 074	16 082	32 937	18 962
Holiday	8 609 778	778 406	653 997	750 104	733 675	639 598	619 034	710 909	737 837	692 738	705 637	728 186	859 657
Study	71 533	13 226	6 947	3 964	7 327	3 659	3 260	12 706	5 153	6 110	3 924	2 650	2 607
Transit	655 392	47 757	38 035	45 194	47 179	39 683	40 789	51 429	73 332	70 011	68 851	71 423	61 709

**Appendix XIII: Number of tourists by region of residence and month of arrival, 2013**

Region	Total	Month of arrival											
		Jan	Feb	Mar	Apr	May	Jun	Jul	Aug	Sep	Oct	Nov	Dec
<b>Total</b>	<b>9 536 568</b>	<b>850 759</b>	<b>715 769</b>	<b>815 075</b>	<b>803 475</b>	<b>699 658</b>	<b>677 085</b>	<b>789 168</b>	<b>829 021</b>	<b>783 933</b>	<b>794 494</b>	<b>835 196</b>	<b>942 935</b>
<b>Overseas</b>	<b>2 660 631</b>	<b>202 548</b>	<b>240 387</b>	<b>249 009</b>	<b>193 848</b>	<b>169 376</b>	<b>156 563</b>	<b>204 120</b>	<b>230 374</b>	<b>217 645</b>	<b>258 380</b>	<b>266 946</b>	<b>271 435</b>
Europe	1 491 758	114 320	151 091	152 534	105 016	76 784	65 342	105 448	122 279	112 054	158 322	165 326	163 242
North America	415 967	26 341	28 340	36 431	29 181	35 114	37 564	39 124	39 187	35 278	36 234	34 689	38 484
Central and South America	129 314	14 124	10 620	10 642	9 283	8 594	7 691	11 052	10 377	11 311	11 196	10 721	13 703
Australasia	148 316	10 371	9 110	10 991	13 492	9 671	10 841	13 402	13 559	16 344	12 569	11 556	16 410
Middle East	42 975	3 478	3 613	4 441	2 622	2 519	3 569	2 817	5 407	3 645	3 487	3 973	3 404
Asia	432 301	33 914	37 613	33 970	34 254	36 694	31 556	32 277	39 565	39 013	36 572	40 681	36 192
<b>Africa</b>	<b>6 856 052</b>	<b>646 325</b>	<b>473 641</b>	<b>564 173</b>	<b>607 803</b>	<b>528 750</b>	<b>519 101</b>	<b>583 503</b>	<b>597 032</b>	<b>564 391</b>	<b>534 242</b>	<b>566 819</b>	<b>670 272</b>
<b>SADC</b>	<b>6 618 866</b>	<b>625 062</b>	<b>454 820</b>	<b>545 047</b>	<b>589 646</b>	<b>511 131</b>	<b>502 470</b>	<b>564 460</b>	<b>575 366</b>	<b>543 675</b>	<b>514 328</b>	<b>545 112</b>	<b>647 749</b>
<b>'Other' Africa</b>	<b>237 186</b>	<b>21 263</b>	<b>18 821</b>	<b>19 126</b>	<b>18 157</b>	<b>17 619</b>	<b>16 631</b>	<b>19 043</b>	<b>21 666</b>	<b>20 716</b>	<b>19 914</b>	<b>21 707</b>	<b>22 523</b>
East and Central Africa	88 521	7 937	6 517	6 622	6 827	6 073	6 119	7 773	8 001	7 738	7 337	8 443	9 134
West Africa	131 758	11 345	10 968	11 257	10 017	10 408	9 278	10 366	12 171	11 388	10 900	11 568	12 092
North Africa	16 907	1 981	1 336	1 247	1 313	1 138	1 234	904	1 494	1 590	1 677	1 696	1 297
<b>Unspecified</b>	<b>19 885</b>	<b>1 886</b>	<b>1 741</b>	<b>1 893</b>	<b>1 824</b>	<b>1 532</b>	<b>1 421</b>	<b>1 545</b>	<b>1 615</b>	<b>1 897</b>	<b>1 872</b>	<b>1 431</b>	<b>1 228</b>



**Appendix XIV: Number of tourists by mode of travel, place and month of arrival, 2013**

Mode of travel and place of arrival	Total	Month of arrival											
		Jan	Feb	Mar	Apr	May	Jun	Jul	Aug	Sep	Oct	Nov	Dec
<b>Total</b>	<b>9 536 568</b>	<b>850 759</b>	<b>715 769</b>	<b>815 075</b>	<b>803 475</b>	<b>699 658</b>	<b>677 085</b>	<b>789 168</b>	<b>829 021</b>	<b>783 933</b>	<b>794 494</b>	<b>835 196</b>	<b>942 935</b>
<b>Air</b>	<b>3 164 204</b>	<b>246 593</b>	<b>274 821</b>	<b>283 881</b>	<b>232 590</b>	<b>207 801</b>	<b>195 378</b>	<b>246 420</b>	<b>276 518</b>	<b>265 835</b>	<b>299 046</b>	<b>309 327</b>	<b>325 994</b>
Cape Town	461 186	37 959	61 597	57 937	29 250	21 237	16 299	21 956	24 720	26 141	39 248	60 703	64 139
King Shaka	35 920	1 605	3 508	3 569	2 961	2 692	2 261	3 699	3 352	1 402	3 681	2 882	4 308
O. R. Tambo	2 656 522	206 398	208 925	221 641	199 364	182 977	175 941	219 745	247 345	237 468	255 027	245 222	256 469
Other Airports	10 576	631	791	734	1 015	895	877	1 020	1 101	824	1 090	520	1 078
<b>Road</b>	<b>6 364 603</b>	<b>603 586</b>	<b>439 383</b>	<b>530 710</b>	<b>567 943</b>	<b>491 372</b>	<b>481 572</b>	<b>542 620</b>	<b>552 354</b>	<b>517 952</b>	<b>495 023</b>	<b>525 503</b>	<b>616 585</b>
Botswana	755 558	57 437	45 385	78 855	58 583	56 478	54 376	64 045	68 260	65 290	56 134	62 400	88 315
Lesotho	1 495 719	174 962	108 051	123 887	145 557	116 203	120 868	135 243	110 500	112 397	105 637	116 306	126 108
Mozambique	1 070 603	134 872	76 671	79 902	90 868	80 405	78 598	93 187	74 036	83 068	88 235	94 795	95 966
Namibia	128 536	10 613	7 223	10 749	11 223	10 371	7 549	9 682	12 450	9 468	9 290	10 031	19 887
Swaziland	1 017 989	82 867	71 430	87 542	82 258	77 754	75 447	85 592	96 050	86 439	84 617	88 913	99 080
Zimbabwe	1 896 198	142 835	130 623	149 775	179 454	150 161	144 734	154 871	191 058	161 290	151 110	153 058	187 229
<b>Sea</b>	<b>6 987</b>	<b>569</b>	<b>1 560</b>	<b>475</b>	<b>2 931</b>	<b>473</b>	<b>124</b>	<b>83</b>	<b>110</b>	<b>100</b>	<b>346</b>	<b>37</b>	<b>179</b>
Cape Town Harbour	2 102	348	1 190	33	22	5	27	62	75	40	271	18	11
Durban Harbour	4 240	165	313	368	2 860	424	86	-	2	4	-	16	2
Port Elizabeth Harbour	182	-	7	-	1	1	1	-	1	2	-	3	166
Other Harbours	463	56	50	74	48	43	10	21	32	54	75	-	-
<b>Unspecified</b>	<b>774</b>	<b>11</b>	<b>5</b>	<b>9</b>	<b>11</b>	<b>12</b>	<b>11</b>	<b>45</b>	<b>39</b>	<b>46</b>	<b>79</b>	<b>329</b>	<b>177</b>

**Appendix XV: Number of tourists by country of residence and month of arrival, 2013**

Country	Total	Month of arrival											
		Jan	Feb	Mar	Apr	May	Jun	Jul	Aug	Sep	Oct	Nov	Dec
<b>Total</b>	<b>9 536 568</b>	<b>850 759</b>	<b>715 769</b>	<b>815 075</b>	<b>803 475</b>	<b>699 658</b>	<b>677 085</b>	<b>789 168</b>	<b>829 021</b>	<b>783 933</b>	<b>794 494</b>	<b>835 196</b>	<b>942 935</b>
<b>Overseas</b>	<b>2 660 631</b>	<b>202 548</b>	<b>240 387</b>	<b>249 009</b>	<b>193 848</b>	<b>169 376</b>	<b>156 563</b>	<b>204 120</b>	<b>230 374</b>	<b>217 645</b>	<b>258 380</b>	<b>266 946</b>	<b>271 435</b>
<b>Europe</b>	<b>1 493 625</b>	<b>114 477</b>	<b>151 288</b>	<b>152 653</b>	<b>105 133</b>	<b>76 913</b>	<b>65 454</b>	<b>105 598</b>	<b>122 480</b>	<b>112 169</b>	<b>158 477</b>	<b>165 508</b>	<b>163 535</b>
Albania	156	20	12	13	9	4	16	13	8	15	14	22	10
Andorra	73	3	1	-	2	5	6	19	20	2	5	4	6
Austria	28 787	2 241	3 239	2 717	1 928	1 127	913	1 796	2 530	2 025	3 026	4 178	3 067
Azores Island	1	-	-	-	-	-	-	-	-	-	-	1	-
Belgium	46 262	3 210	4 100	4 443	3 440	1 942	1 836	4 545	3 911	3 480	5 231	5 608	4 516
Bosnia-Herzegovina	219	47	20	12	19	11	6	10	11	23	13	21	26
Bulgaria	2 963	228	233	262	214	209	144	169	186	172	238	435	473
Croatia	1 655	190	132	122	124	101	92	113	143	118	118	224	178
Cyprus	1 634	141	121	111	102	106	95	131	174	102	128	152	271
Czech Republic	6 894	524	815	687	469	351	274	399	553	485	752	1 080	505
Denmark	25 968	2 601	3 648	2 953	1 667	1 186	1 091	1 688	1 279	1 514	3 338	2 509	2 494
Estonia	976	98	172	120	55	29	47	48	28	22	53	209	95
Finland	10 605	899	1 257	1 165	666	463	497	373	434	634	1 117	1 621	1 479
France	133 787	9 057	12 289	13 374	10 904	8 408	5 635	9 947	12 244	8 416	15 775	15 238	12 500
Georgia	233	16	16	8	15	23	17	19	27	13	27	30	22
Germany	300 739	21 101	31 546	35 495	19 190	14 178	10 275	15 649	21 712	25 489	36 545	39 149	30 410
Gibraltar	2	1	-	-	-	1	-	-	-	-	-	-	-
Greece	6 380	491	530	530	533	456	354	442	519	479	528	633	885
Hungary	3 321	326	297	313	220	190	190	302	225	207	279	444	328
Iceland	807	70	68	191	60	42	38	25	49	59	47	88	70
Ireland	27 593	2 444	2 586	3 156	2 104	1 537	1 710	1 940	2 004	1 863	2 362	2 492	3 395
Isle Of Man	3	3	-	-	-	-	-	-	-	-	-	-	-
Italy	67 259	4 572	4 353	4 786	4 054	3 348	3 879	5 640	12 097	5 723	6 092	6 177	6 538
Latvia	674	51	63	75	67	38	22	26	30	39	98	59	106
Liechtenstein	280	12	17	23	31	4	6	20	22	21	42	42	40
Lithuania	1 082	113	114	115	91	48	46	52	79	72	63	175	114
Luxembourg	1 707	126	91	205	96	46	50	95	358	176	138	167	159
Macedonia	31	-	-	-	-	-	-	-	-	-	-	16	15

**Appendix XV: Number of tourists by country of residence and month of arrival, 2013 (continued)**

Country	Total	Month of arrival											
		Jan	Feb	Mar	Apr	May	Jun	Jul	Aug	Sep	Oct	Nov	Dec
Malta	664	49	48	42	45	34	24	58	74	139	55	56	40
Moldova	167	18	15	16	12	13	4	11	20	10	13	20	15
Monaco	104	4	16	8	5	1	6	2	22	5	13	9	13
Norway	24 343	2 408	3 197	3 332	1 399	881	1 096	1 621	1 159	1 550	2 166	2 870	2 664
Poland	12 856	1 101	1 459	1 237	1 025	718	566	725	982	914	1 221	1 800	1 108
Portugal	52 580	4 702	4 085	4 899	4 016	3 512	3 309	3 551	4 229	4 186	4 353	5 119	6 619
Republic of Belarus	651	33	63	46	57	42	36	46	51	55	41	89	92
Romania	2 852	258	345	260	259	210	168	177	186	212	173	267	337
Russian Federation	13 546	1 421	1 168	1 296	1 148	970	791	886	831	909	1 018	1 477	1 631
San Marino	24	5	3	2	-	-	2	1	4	3	-	2	2
Serbia and Montenegro	1 915	-	147	150	218	106	102	148	170	173	186	186	329
Slovakia	2 831	173	385	284	166	202	116	212	256	188	289	309	251
Slovenia	1 063	89	105	60	87	69	51	99	91	52	87	154	119
Spain	32 037	1 729	1 810	2 308	2 060	1 959	1 838	3 000	5 219	3 356	3 129	3 278	2 351
Sweden	43 498	4 791	6 357	4 254	2 342	1 784	1 363	1 276	1 438	2 012	4 474	5 737	7 670
Switzerland	58 933	4 252	5 380	4 874	4 428	2 516	2 002	3 984	3 383	5 258	8 274	8 290	6 292
The Netherlands	120 763	8 847	10 778	8 465	8 163	5 400	4 767	13 321	9 546	9 692	14 987	13 053	13 744
Turkey	13 612	1 213	1 322	1 332	893	838	726	848	872	1 061	2 083	1 296	1 128
UK	436 599	34 392	48 486	48 556	32 322	23 507	20 988	31 786	34 870	30 874	39 543	40 333	50 942
Ukraine	4 307	384	323	339	405	289	253	372	409	345	319	388	481
Vatican	21	4	2	-	1	1	-	1	3	2	1	1	5
Yugoslavia	168	19	14	17	22	8	7	12	22	24	23	-	-
<b>North America</b>	<b>415 966</b>	<b>26 341</b>	<b>28 340</b>	<b>36 431</b>	<b>29 180</b>	<b>35 114</b>	<b>37 564</b>	<b>39 124</b>	<b>39 187</b>	<b>35 278</b>	<b>36 234</b>	<b>34 689</b>	<b>38 484</b>
Canada	68 587	5 011	6 098	7 105	5 347	4 534	3 907	4 540	5 141	5 238	7 054	7 113	7 499
Saint Pierre And Miquelon	1	-	-	-	-	-	-	-	-	-	-	-	1
USA	347 378	21 330	22 242	29 326	23 833	30 580	33 657	34 584	34 046	30 040	29 180	27 576	30 984
<b>Central and South America</b>	<b>129 525</b>	<b>14 137</b>	<b>10 635</b>	<b>10 658</b>	<b>9 310</b>	<b>8 610</b>	<b>7 703</b>	<b>11 066</b>	<b>10 393</b>	<b>11 326</b>	<b>11 216</b>	<b>10 742</b>	<b>13 729</b>
Antigua And Barbuda	66	14	1	4	7	-	3	5	2	13	4	4	9
Argentina	19 423	2 586	2 171	2 174	1 238	1 126	1 024	1 430	1 537	1 551	1 605	1 452	1 529
Bahamas	165	21	8	8	3	14	19	9	28	5	21	13	16

**Appendix XV: Number of tourists by country of residence and month of arrival, 2013 (continued)**

Country	Total	Month of arrival											
		Jan	Feb	Mar	Apr	May	Jun	Jul	Aug	Sep	Oct	Nov	Dec
Barbados	126	10	4	5	11	9	11	12	10	15	17	14	8
Belize	61	4	6	6	2	3	5	7	3	4	5	11	5
Bermuda	63	3	8	8	5	4	7	5	5	7	5	4	2
Bolivia	1 561	64	57	90	171	128	105	199	196	124	161	97	169
Br Virgin Island	2	-	-	-	-	-	-	-	-	-	2	-	-
Brazil	82 730	9 261	6 621	6 434	6 155	5 547	4 928	6 916	6 243	7 186	7 121	7 067	9 251
Chile	4 036	383	569	288	289	218	181	344	312	410	365	281	396
Colombia	2 833	220	158	201	172	193	222	234	271	281	344	235	302
Costa Rica	510	31	35	38	31	62	27	49	43	52	39	52	51
Cuba	2 008	263	88	157	136	95	124	155	162	143	126	140	419
Dominican Republic	154	13	2	12	20	7	10	8	20	14	18	14	16
Ecuador	810	35	48	66	67	105	43	65	98	70	83	75	55
El Salvador	124	10	4	7	5	2	14	18	9	9	11	18	17
Grenada	35	2	2	2	1	2	4	4	3	6	3	2	4
Guatemala	273	22	13	17	33	15	28	27	28	14	32	27	17
Guyana	211	13	15	16	27	16	12	14	16	15	20	21	26
Haiti	141	11	5	8	5	12	10	19	22	13	10	13	13
Honduras	270	35	14	21	17	18	16	20	22	36	22	23	26
Jamaica	688	48	44	50	76	48	72	41	65	54	62	47	81
Mexico	4 077	337	179	364	227	271	296	529	422	352	367	356	377
Nicaragua	119	13	11	5	9	4	11	8	5	4	21	14	14
Panama	324	21	14	13	17	36	22	51	25	41	23	19	42
Paraguay	760	88	63	45	38	31	53	70	63	73	70	68	98
Peru	3 246	284	226	205	243	227	167	354	296	370	262	301	311
Puerto Rico	3	1	-	-	1	-	-	1	-	-	-	-	-
St Lucia	41	2	4	3	3	2	1	5	7	1	5	6	2
St Vincent and Grenadines	33	1	2	1	5	4	2	2	6	3	2	2	3
Suriname	73	8	6	8	4	1	3	2	3	4	8	12	14
Trinidad and Tobago	1 182	61	43	84	98	89	50	146	137	137	132	88	117
Turks And Caicos Islands	4	-	-	-	-	-	-	4	-	-	-	-	-
Uruguay	1 575	136	132	146	96	117	90	130	147	183	111	159	128
Venezuela	1 710	129	72	162	92	197	138	175	178	131	127	107	202
West Indies	88	7	10	10	6	7	5	8	9	5	12	-	9

**Appendix XV: Number of tourists by country of residence and month of arrival, 2013 (continued)**

Country	Total	Month of arrival											
		Jan	Feb	Mar	Apr	May	Jun	Jul	Aug	Sep	Oct	Nov	Dec
<b>Australasia</b>	<b>148 316</b>	<b>10 371</b>	<b>9 110</b>	<b>10 991</b>	<b>13 492</b>	<b>9 671</b>	<b>10 841</b>	<b>13 402</b>	<b>13 559</b>	<b>16 344</b>	<b>12 569</b>	<b>11 556</b>	<b>16 410</b>
Australia	124 898	8 860	7 868	9 184	11 552	8 161	9 183	11 199	11 566	14 038	10 580	9 678	13 029
Bouvet Island	2	-	-	-	1	-	-	-	-	1	-	-	-
Federated States of Micronesia	6	-	-	-	-	-	-	-	-	2	-	-	4
Fiji	171	4	6	27	23	5	12	10	16	14	16	14	24
French Polynesia	2	-	-	1	-	1	-	-	-	-	-	-	-
French Southerner	1	1	-	-	-	-	-	-	-	-	-	-	-
Kiribati	16	-	1	1	-	2	1	2	-	6	2	1	-
Marshall Islands	4	-	-	-	1	-	1	-	-	2	-	-	-
Nauru	7	-	1	-	-	1	-	1	3	1	-	-	-
New Guinea	1	-	-	-	-	-	1	-	-	-	-	-	-
New Zealand	22 942	1 499	1 223	1 758	1 893	1 478	1 627	2 133	1 936	2 262	1 949	1 855	3 329
Northern Mariana Island	7	4	-	2	-	1	-	-	-	-	-	-	-
Palau	2	-	-	-	-	-	-	-	-	-	1	-	1
Papua New Guinea	127	-	6	3	-	3	7	49	29	11	9	4	6
Samoa	54	3	2	2	6	15	2	2	5	2	-	1	14
Solomon Island	12	-	-	1	1	-	-	1	-	-	6	1	2
Tonga Island	17	-	1	3	2	1	2	3	2	2	1	-	-
Tuvalu	12	-	2	1	-	3	1	2	1	2	-	-	-
Vanuatu	35	-	-	8	13	-	4	-	1	1	5	2	1
<b>Middle East</b>	<b>41341</b>	<b>3 337</b>	<b>3 492</b>	<b>4 330</b>	<b>2 520</b>	<b>2 413</b>	<b>3 474</b>	<b>2 686</b>	<b>5 233</b>	<b>3 543</b>	<b>3 359</b>	<b>3 821</b>	<b>3 133</b>
Bahrain	203	7	31	19	6	15	46	17	19	5	14	17	7
Iran	2 720	226	228	542	126	133	164	208	159	201	207	246	280
Iraq	303	31	17	24	28	21	19	29	8	28	38	36	24
Israel	22 116	1 945	2 262	2 479	1 357	1 194	1 064	1 659	2 028	2 207	1 725	2 479	1 717
Jordan	2 169	156	190	157	194	169	171	124	215	230	198	204	161
Kuwait	956	34	48	38	41	31	63	38	396	61	103	47	56
Lebanon	3 333	261	278	306	234	258	218	250	277	307	267	282	395
Oman	411	29	20	29	72	37	40	27	35	34	25	39	24

**Appendix XV: Number of tourists by country of residence and month of arrival, 2013 (continued)**

Country	Total	Month of arrival											
		Jan	Feb	Mar	Apr	May	Jun	Jul	Aug	Sep	Oct	Nov	Dec
Palestine	208	17	13	12	12	16	20	12	21	15	17	16	37
Qatar	254	4	18	29	15	21	32	14	53	8	19	17	24
Saudi Arabia	6 303	522	273	500	246	363	1 378	202	1 480	302	572	264	201
Syria	602	20	42	78	47	54	47	44	56	49	58	48	59
United Arab Emirates	1 296	29	45	81	100	77	160	43	425	62	68	89	117
Yemen	467	56	27	36	42	24	52	19	61	34	48	37	31
<b>Asia</b>	<b>431 858</b>	<b>33 885</b>	<b>37 582</b>	<b>33 946</b>	<b>34 213</b>	<b>36 655</b>	<b>31 527</b>	<b>32 244</b>	<b>39 522</b>	<b>38 985</b>	<b>36 525</b>	<b>40 630</b>	<b>36 144</b>
Afghanistan	296	69	28	14	16	19	10	9	27	20	12	28	44
Armenia	186	33	11	16	5	9	15	10	10	16	10	16	35
Azerbaijan	304	45	27	19	26	28	27	29	33	17	15	19	19
Bangladesh	4 896	456	397	361	408	366	331	296	399	429	376	574	503
Bhutan	45	2	-	3	4	6	10	1	1	6	8	2	2
Brunei Darussalam	51	6	1	-	7	-	1	1	3	9	9	10	4
Cambodia	133	7	5	14	6	12	12	2	34	10	4	10	17
China	151 053	11 992	16 637	13 021	12 052	10 912	9 246	11 642	13 967	15 308	11 084	13 933	11 259
East Indian Islands	1	-	-	-	1	-	-	-	-	-	-	-	-
East Timor	72	-	7	3	6	7	2	4	4	4	7	12	16
Hong Kong	3	-	-	-	1	-	-	-	-	-	-	1	1
India	112 100	8 270	8 514	8 508	9 815	13 492	9 990	7 935	9 020	8 086	8 357	10 451	9 662
Indonesia	6 254	383	351	422	484	395	431	328	1 304	552	526	529	549
Japan	41 099	2 713	2 533	2 776	2 750	2 736	2 853	3 043	4 102	4 018	6 366	3 933	3 276
Kazakhstan	649	31	82	47	38	32	28	32	47	66	72	92	82
Kyrgyzstan	78	-	6	2	10	4	7	10	1	17	8	4	9
Laos	48	3	1	9	1	4	5	8	2	7	4	2	2
Macau	1	-	-	-	-	-	-	1	-	-	-	-	-
Malaysia	10 544	454	614	509	537	812	750	549	1 602	1 135	1 023	1 581	978
Maldives	46	5	3	6	2	4	-	9	10	-	1	4	2
Mongolia	144	12	8	16	8	10	6	8	3	18	14	12	29
Myanmar	471	39	43	37	28	44	45	26	50	27	49	49	34

**Appendix XV: Number of tourists by country of residence and month of arrival, 2013 (continued)**

Country	Total	Month of arrival											
		Jan	Feb	Mar	Apr	May	Jun	Jul	Aug	Sep	Oct	Nov	Dec
Nepal	626	52	29	63	48	43	31	45	100	61	47	79	28
North Korea	617	17	26	27	47	11	24	19	52	28	33	297	36
Pakistan	19 474	1 595	1 574	1 616	1 454	1 773	1 733	1 537	1 674	1 673	1 289	1 784	1 772
Philippines	17 011	1 534	1 262	1 409	1 389	1 344	1 227	1 517	1 520	1 384	1 299	1 623	1 503
Singapore	10 603	430	531	570	617	748	933	690	853	1 575	919	1 168	1 569
South Korea	21 756	3 215	1 734	1 693	1 304	1 274	1 417	2 043	2 077	1 633	1 734	1 699	1 933
Sri Lanka	4 342	453	329	329	408	259	246	234	372	332	347	344	689
Sumatra	2	-	-	-	-	-	1	-	-	-	1	-	-
Taiwan	11 700	784	1 199	805	849	774	810	981	957	1 271	1 311	1 097	862
Tajikistan	39	4	1	1	4	4	3	4	3	4	1	6	4
Thailand	9 103	659	582	595	1 227	975	735	840	826	594	918	579	573
Turkmenistan	28	10	1	1	4	2	-	2	-	3	3	1	1
Uzbekistan	212	11	14	9	22	18	14	17	16	17	20	12	42
Vietnam	7 871	601	1 032	1 045	635	538	584	372	453	665	658	679	609
<b>Africa</b>	<b>6 856 052</b>	<b>646 325</b>	<b>473 641</b>	<b>564 173</b>	<b>607 803</b>	<b>528 750</b>	<b>519 101</b>	<b>583 503</b>	<b>597 032</b>	<b>564 391</b>	<b>534 242</b>	<b>566 819</b>	<b>670 272</b>
<b>SADC</b>	<b>6 618 866</b>	<b>625 062</b>	<b>454 820</b>	<b>545 047</b>	<b>589 646</b>	<b>511 131</b>	<b>502 470</b>	<b>564 460</b>	<b>575 366</b>	<b>543 675</b>	<b>514 328</b>	<b>545 112</b>	<b>647 749</b>
Angola	57 041	6 488	4 608	3 977	4 033	4 076	3 423	4 368	4 981	4 820	5 030	5 583	5 654
Botswana	537 131	33 079	31 440	61 663	38 596	39 390	38 643	45 896	48 485	48 776	39 318	45 821	66 024
DRC	34 066	3 128	2 668	2 576	2 419	2 165	2 201	3 296	3 740	2 742	2 553	2 435	4 143
Lesotho	1 461 267	172 060	105 148	120 271	142 959	113 723	118 705	132 815	107 919	110 080	102 846	112 707	122 034
Madagascar	6 424	514	545	471	616	477	503	457	555	536	517	723	510
Malawi	170 345	10 207	11 774	13 277	12 659	14 041	14 475	16 624	17 488	17 952	15 909	13 839	12 100
Mauritius	19 341	1 536	1 495	1 441	1 852	1 263	1 307	1 609	1 850	1 436	1 750	2 079	1 723
Mozambique	1 116 735	139 722	79 694	81 426	93 399	83 208	81 627	96 887	78 358	87 278	92 717	99 705	102 714
Namibia	222 028	16 818	13 164	18 445	19 735	18 857	14 263	17 728	20 114	17 818	18 514	17 628	28 944
Seychelles	4 849	278	368	383	318	302	225	267	345	449	566	743	605
Swaziland	836 467	67 314	56 254	72 065	69 342	66 418	65 189	70 783	78 808	72 939	64 645	68 958	83 752
Tanzania	38 099	2 810	3 096	3 230	2 986	2 808	3 031	2 981	3 030	3 167	3 501	3 664	3 795
Zambia	179 914	12 075	12 547	14 127	15 760	14 200	13 930	15 004	15 823	15 588	15 055	16 275	19 530
Zimbabwe	1 935 159	159 033	132 019	151 695	184 972	150 203	144 948	155 745	193 870	160 094	151 407	154 952	196 221

**Appendix XV: Number of tourists by country of residence and month of arrival, 2013 (continued)**

Country	Total	Month of arrival											
		Jan	Feb	Mar	Apr	May	Jun	Jul	Aug	Sep	Oct	Nov	Dec
<b>'Other' Africa</b>	<b>237 186</b>	<b>21 263</b>	<b>18 821</b>	<b>19 126</b>	<b>18 157</b>	<b>17 619</b>	<b>16 631</b>	<b>19 043</b>	<b>21 666</b>	<b>20 716</b>	<b>19 914</b>	<b>21 707</b>	<b>22 523</b>
<b>East and Central Africa</b>	<b>88 521</b>	<b>7 937</b>	<b>6 517</b>	<b>6 622</b>	<b>6 827</b>	<b>6 073</b>	<b>6 119</b>	<b>7 773</b>	<b>8 001</b>	<b>7 738</b>	<b>7 337</b>	<b>8 443</b>	<b>9 134</b>
Burundi	1 772	126	123	100	139	115	107	152	220	182	170	194	144
Cameroon	6 203	729	487	476	510	449	415	519	510	478	488	568	574
Central African Republic	197	16	21	21	20	7	33	8	7	14	18	20	12
Chad	486	35	34	40	23	28	30	40	40	60	42	38	76
Comoros	369	10	70	18	35	10	14	27	22	41	32	44	46
Congo	4 551	404	347	313	288	258	346	557	491	410	331	416	390
Djibouti	91	7	5	3	5	6	6	6	7	3	12	12	19
Equatorial Guinea	497	65	58	31	41	17	20	37	40	26	80	24	58
Eritrea	720	66	33	62	66	41	49	59	58	65	37	81	103
Ethiopia	9 049	770	646	691	763	634	656	753	885	863	825	844	719
Gabon	7 864	692	582	504	412	403	439	928	1 188	745	598	593	780
Kenya	35 582	3 056	2 647	2 557	2 964	2 575	2 456	2 974	2 906	2 911	3 039	3 603	3 894
Reunion	1	-	-	-	-	-	-	-	-	-	-	-	1
Rwanda	3 647	336	215	321	286	215	272	357	284	315	295	355	396
Sao Tome and Principe	215	9	17	10	26	16	17	19	26	21	15	21	18
Somalia	115	8	2	28	6	7	10	8	8	5	13	8	12
Tristan Da Cunha	1	-	-	-	1	-	-	-	-	-	-	-	-
Uganda	17 161	1 608	1 230	1 447	1 242	1 292	1 249	1 329	1 309	1 599	1 342	1 622	1 892
<b>West Africa</b>	<b>131 758</b>	<b>11 345</b>	<b>10 968</b>	<b>11 257</b>	<b>10 017</b>	<b>10 408</b>	<b>9 278</b>	<b>10 366</b>	<b>12 171</b>	<b>11 388</b>	<b>10 900</b>	<b>11 568</b>	<b>12 092</b>
Benin	1 930	117	157	163	154	169	151	158	162	168	177	197	157
Burkina Faso	1 052	114	87	64	83	74	60	56	112	90	135	69	108
Cape Verde Island	785	99	49	67	73	53	51	56	67	64	58	76	72
Côte D'Ivoire	2 988	347	224	234	245	167	207	227	290	222	243	307	275
Gambia	1 051	100	84	120	89	74	50	62	60	74	122	96	120
Ghana	27 361	2 975	2 355	2 184	2 168	1 969	1 998	2 176	2 282	2 230	2 214	2 367	2 443
Guinea	2 866	269	263	287	215	211	226	209	264	227	252	239	204
Guinea-Bissau	193	11	11	23	18	8	8	14	15	18	20	27	20
Liberia	716	44	47	52	54	50	61	44	62	105	69	59	69



**Appendix XV: Number of tourists by country of residence and month of arrival, 2013 (concluded)**

Country	Total	Month of arrival											
		Jan	Feb	Mar	Apr	May	Jun	Jul	Aug	Sep	Oct	Nov	Dec
Mali	1 516	160	149	116	93	79	113	101	111	177	137	140	140
Mauritania	445	20	33	48	53	57	51	35	34	25	30	31	28
Niger	533	122	49	21	29	26	37	35	36	34	42	57	45
Nigeria	84 552	6 547	6 979	7 329	6 304	7 026	5 875	6 776	8 161	7 479	6 821	7 356	7 899
Saint Helena	59	4	-	-	-	-	-	3	18	7	27	-	-
Senegal	3 926	257	318	388	301	306	275	283	349	343	388	382	336
Sierra Leone	995	64	75	96	85	80	68	66	83	84	103	92	99
Togo	790	95	88	65	53	59	47	65	65	41	62	73	77
<b>North Africa</b>	<b>16 907</b>	<b>1 981</b>	<b>1 336</b>	<b>1 247</b>	<b>1 313</b>	<b>1 138</b>	<b>1 234</b>	<b>904</b>	<b>1 494</b>	<b>1 590</b>	<b>1 677</b>	<b>1 696</b>	<b>1 297</b>
Algeria	2 082	772	92	110	105	107	82	69	97	164	141	208	135
Egypt	7 908	609	738	602	691	548	633	410	789	785	810	733	560
Libya	1 441	102	89	113	88	78	116	82	165	160	135	142	171
Morocco	1 601	227	143	105	106	125	115	90	125	127	146	173	119
South Sudan	900	-	46	43	92	70	85	79	67	61	108	131	118
The Sudan	1 511	107	125	144	122	124	120	94	131	132	135	174	103
Tunisia	1 440	163	103	129	109	83	82	79	118	161	194	134	85
Western Sahara	24	1	-	1	-	3	1	1	2	-	8	1	6
<b>Unspecified</b>	<b>19 885</b>	<b>1 886</b>	<b>1 741</b>	<b>1 893</b>	<b>1 824</b>	<b>1 532</b>	<b>1 421</b>	<b>1 545</b>	<b>1 615</b>	<b>1 897</b>	<b>1 872</b>	<b>1 431</b>	<b>1 228</b>

**Appendix XVI: Number of tourists by country of residence and mode of travel, 2013**

Country	Total	Mode of travel			
		Air	Road	Sea	Unspecified
<b>Total</b>	<b>9 536 568</b>	<b>3 164 204</b>	<b>6 364 603</b>	<b>6 987</b>	<b>774</b>
<b>Overseas</b>	<b>2 660 631</b>	<b>2 384 755</b>	<b>268 734</b>	<b>6 496</b>	<b>646</b>
<b>Europe</b>	<b>1 493 625</b>	<b>1 317 415</b>	<b>173 142</b>	<b>2 951</b>	<b>117</b>
Albania	156	146	10	-	-
Andorra	73	68	5	-	-
Austria	28 787	25 577	3 196	8	6
Azores Island	1	-	1	-	-
Belgium	46 262	39 887	6 351	20	4
Bosnia-Herzegovina	219	201	18	-	-
Bulgaria	2 963	2 609	341	12	1
Croatia	1 655	1 525	118	12	-
Cyprus	1 634	1 472	162	-	-
Czech Republic	6 894	5 876	1 018	-	-
Denmark	25 968	23 542	2 407	18	1
Estonia	976	834	142	-	-
Finland	10 605	9 565	1 035	5	-
France	133 787	115 603	18 103	79	2
Georgia	233	223	8	2	-
Germany	300 739	262 703	37 889	136	11
Gibraltar	2	1	-	1	-
Greece	6 380	5 901	446	33	-
Hungary	3 321	3 118	198	3	2
Iceland	807	708	96	3	-
Ireland	27 593	24 646	2 921	25	1
Isle Of Man	3	1	-	2	-
Italy	67 259	61 790	5 364	99	6
Latvia	674	606	59	9	-
Liechtenstein	280	257	23	-	-
Lithuania	1 082	974	103	4	1
Luxembourg	1 707	1 516	190	1	-
Macedonia	31	31	-	-	-

**Appendix XVI: Number of tourists by country of residence and mode of travel, 2013 (continued)**

Country	Total	Mode of travel			
		Air	Road	Sea	Unspecified
Malta	664	617	44	3	-
Moldova	167	157	9	1	-
Monaco	104	96	8	-	-
Norway	24 343	21 911	2 402	30	-
Poland	12 856	11 592	1 219	44	1
Portugal	52 580	36 081	16 475	20	4
Republic of Belarus	651	614	37	-	-
Romania	2 852	2 702	121	29	-
Russian Federation	13 546	12 618	823	94	11
San Marino	24	23	1	-	-
Serbia and Montenegro	1 915	1 506	403	6	-
Slovakia	2 831	2 538	292	1	-
Slovenia	1 063	986	76	1	-
Spain	32 037	29 068	2 938	25	6
Sweden	43 498	39 129	4 325	28	16
Switzerland	58 933	52 755	6 108	57	13
The Netherlands	120 763	96 577	24 101	80	5
Turkey	13 612	12 964	623	25	-
UK	436 599	401 943	32 674	1 956	26
Ukraine	4 307	3 978	253	76	-
Vatican	21	18	3	-	-
Yugoslavia	168	162	3	3	-
<b>North America</b>	<b>415 966</b>	<b>379 311</b>	<b>35 955</b>	<b>401</b>	<b>299</b>
Canada	68 587	60 723	7 757	77	30
Saint Pierre And Miquelon	1	-	1	-	-
USA	347 378	318 588	28 197	324	269
<b>Central and South America</b>	<b>129 525</b>	<b>122 027</b>	<b>7 408</b>	<b>71</b>	<b>19</b>
Antigua And Barbuda	66	58	8	-	-
Argentina	19 423	18 858	562	2	1
Bahamas	165	162	3	-	-

**Appendix XVI: Number of tourists by country of residence and mode of travel, 2013 (continued)**

Country	Total	Mode of travel			
		Air	Road	Sea	Unspecified
Barbados	126	121	5	-	-
Belize	61	56	5	-	-
Bermuda	63	57	6	-	-
Bolivia	1 561	1 459	102	-	-
Br Virgin Island	2	2	-	-	-
Brazil	82 730	77 545	5 149	20	16
Chile	4 036	3 749	279	8	-
Colombia	2 833	2 696	134	1	2
Costa Rica	510	452	58	-	-
Cuba	2 008	1 858	142	8	-
Dominican Republic	154	133	21	-	-
Ecuador	810	748	62	-	-
El Salvador	124	118	5	1	-
Grenada	35	34	1	-	-
Guatemala	273	265	6	2	-
Guyana	211	169	41	1	-
Haiti	141	119	22	-	-
Honduras	270	225	30	15	-
Jamaica	688	543	145	-	-
Mexico	4 077	3 939	133	5	-
Nicaragua	119	95	24	-	-
Panama	324	314	10	-	-
Paraguay	760	725	35	-	-
Peru	3 246	3 015	226	5	-
Puerto Rico	3	2	1	-	-
St Lucia	41	39	2	-	-
St Vincent and Grenadines	33	33	-	-	-
Suriname	73	69	4	-	-
Trinidad and Tobago	1 182	1 132	50	-	-
Turks And Caicos Islands	4	4	-	-	-
Uruguay	1 575	1 518	57	-	-
Venezuela	1 710	1 637	73	-	-
West Indies	88	78	7	3	-

**Appendix XVI: Number of tourists by country of residence and mode of travel, 2013 (continued)**

Country	Total	Mode of travel			
		Air	Road	Sea	Unspecified
<b>Australasia</b>	<b>148 316</b>	<b>135 810</b>	<b>10 824</b>	<b>1 650</b>	<b>32</b>
Australia	124 898	114 206	9 075	1 594	23
Bouvet Island	2	1	1	-	-
Federated States of Micronesia	6	4	2	-	-
Fiji	171	166	5	-	-
French Polynesia	2	2	-	-	-
French Southerner	1	-	-	1	-
Kiribati	16	16	-	-	-
Marshall Islands	4	4	-	-	-
Nauru	7	7	-	-	-
New Guinea	1	1	-	-	-
New Zealand	22 942	21 152	1 728	53	9
Northern Mariana Island	7	-	7	-	-
Palau	2	2	-	-	-
Papua New Guinea	127	126	1	-	-
Samoa	54	48	5	1	-
Solomon Island	12	12	-	-	-
Tonga Island	17	17	-	-	-
Tuvalu	12	11	-	1	-
Vanuatu	35	35	-	-	-
<b>Middle East</b>	<b>41341</b>	<b>38852</b>	<b>2 464</b>	<b>22</b>	<b>3</b>
Bahrain	203	201	2	-	-
Iran	2 720	2 618	99	2	1
Iraq	303	287	16	-	-
Israel	22 116	20 291	1 816	8	1
Jordan	2 169	2 057	111	1	-
Kuwait	956	930	26	-	-
Lebanon	3 333	3 016	310	7	-
Oman	411	411	-	-	-
Palestine	208	190	18	-	-

**Appendix XVI: Number of tourists by country of residence and mode of travel, 2013 (continued)**

Country	Total	Mode of travel			
		Air	Road	Sea	Unspecified
Qatar	254	248	6	-	-
Saudi Arabia	6 303	6 270	33	-	-
Syria	602	591	7	3	1
United Arab Emirates	1 296	1 283	13	-	-
Yemen	467	459	7	1	-
<b>Asia</b>	<b>431 858</b>	<b>391 340</b>	<b>38 941</b>	<b>1 401</b>	<b>176</b>
Afghanistan	296	203	92	-	1
Armenia	186	179	7	-	-
Azerbaijan	304	303	1	-	-
Bangladesh	4 896	3 226	1 564	52	54
Bhutan	45	40	5	-	-
Brunei Darussalam	51	49	2	-	-
Cambodia	133	127	6	-	-
China	151 053	142 594	8 325	129	5
East Indian Islands	1	1	-	-	-
East Timor	72	72	-	-	-
Hong Kong	3	1	-	1	1
India	112 100	97 308	14 477	295	20
Indonesia	6 254	5 854	188	212	-
Japan	41 099	39 502	1 568	20	9
Kazakhstan	649	640	9	-	-
Kyrgyzstan	78	74	4	-	-
Laos	48	31	17	-	-
Macau	1	1	-	-	-
Malaysia	10 544	10 223	310	7	4
Maldives	46	44	1	1	-
Mongolia	144	139	5	-	-
Myanmar	471	377	66	28	-
Nepal	626	597	25	4	-
North Korea	617	575	42	-	-

**Appendix XVI: Number of tourists by country of residence and mode of travel, 2013 (continued)**

Country	Total	Mode of travel			
		Air	Road	Sea	Unspecified
Pakistan	19 474	13 988	5 410	44	32
Philippines	17 011	15 051	1 490	470	-
Singapore	10 603	10 354	225	9	15
South Korea	21 756	19 645	2 071	39	1
Sri Lanka	4 342	3 190	1 133	19	-
Sumatra	2	1	1	-	-
Taiwan	11 700	10 077	1 566	26	31
Tajikistan	39	39	-	-	-
Thailand	9 103	8 799	257	45	2
Turkmenistan	28	28	-	-	-
Uzbekistan	212	212	-	-	-
Vietnam	7 871	7 796	74	-	1
<b>Africa</b>	<b>6 856 052</b>	<b>765 756</b>	<b>6 089 686</b>	<b>482</b>	<b>128</b>
<b>SADC</b>	<b>6 618 866</b>	<b>547 621</b>	<b>6 070 960</b>	<b>243</b>	<b>42</b>
Angola	57 041	55 095	1 918	13	15
Botswana	537 131	46 903	490 220	8	-
DRC	34 066	27 146	6 920	-	-
Lesotho	1 461 267	10 191	1 451 064	11	1
Madagascar	6 424	6 286	106	32	-
Malawi	170 345	22 794	147 548	2	1
Mauritius	19 341	17 565	1 764	12	-
Mozambique	1 116 735	61 197	1 055 514	17	7
Namibia	222 028	72 733	149 212	79	4
Seychelles	4 849	4 769	80	-	-
Swaziland	836 467	12 366	824 095	5	1
Tanzania	38 099	23 889	14 206	4	-
Zambia	179 914	61 481	118 428	5	-
Zimbabwe	1 935 159	125 206	1 809 885	55	13

**Appendix XVI: Number of tourists by country of residence and mode of travel, 2013 (continued)**

Country	Total	Mode of travel			
		Air	Road	Sea	Unspecified
<b>'Other' Africa</b>	<b>237 186</b>	<b>218 135</b>	<b>18 726</b>	<b>239</b>	<b>86</b>
<b>East and Central Africa</b>	<b>88 521</b>	<b>79 845</b>	<b>8 538</b>	<b>95</b>	<b>43</b>
Burundi	1 772	1 654	118	-	-
Cameroon	6 203	5 694	475	25	9
Central African Republic	197	182	15	-	-
Chad	486	483	3	-	-
Comoros	369	332	37	-	-
Congo	4 551	4 396	92	44	19
Djibouti	91	90	1	-	-
Equatorial Guinea	497	487	10	-	-
Eritrea	720	671	48	1	-
Ethiopia	9 049	8 061	977	7	4
Gabon	7 864	7 813	46	2	3
Kenya	35 582	31 508	4 062	9	3
Reunion	1	1	-	-	-
Rwanda	3 647	3 441	206	-	-
Sao Tome and Principe	215	207	8	-	-
Somalia	115	102	10	1	2
Tristan Da Cunha	1	-	-	1	-
Uganda	17 161	14 723	2 430	5	3
<b>West Africa</b>	<b>131 758</b>	<b>121 997</b>	<b>9 596</b>	<b>130</b>	<b>35</b>
Benin	1 930	1 837	93	-	-
Burkina Faso	1 052	1 033	18	1	-
Cape Verde Island	785	688	97	-	-
Côte D'Ivoire	2 988	2 918	66	3	1
Gambia	1 051	993	58	-	-
Ghana	27 361	25 416	1 932	7	6
Guinea	2 866	1 526	1 336	4	-
Guinea-Bissau	193	161	32	-	-
Liberia	716	677	39	-	-



**Appendix XVI: Number of tourists by country of residence and mode of travel, 2013 (concluded)**

Country	Total	Mode of travel			
		Air	Road	Sea	Unspecified
Mali	1 516	1 243	273	-	-
Mauritania	445	435	10	-	-
Niger	533	531	2	-	-
Nigeria	84 552	79 092	5 385	49	26
Saint Helena	59	3	-	56	-
Senegal	3 926	3 815	102	7	2
Sierra Leone	995	849	143	3	-
Togo	790	780	10	-	-
<b>North Africa</b>	<b>16 907</b>	<b>16 293</b>	<b>592</b>	<b>14</b>	<b>8</b>
Algeria	2 082	2 022	55	2	3
Egypt	7 908	7 608	286	10	4
Libya	1 441	1 347	91	2	1
Morocco	1 601	1 515	86	-	-
South Sudan	900	877	23	-	-
The Sudan	1 511	1 476	35	-	-
Tunisia	1 440	1 424	16	-	-
Western Sahara	24	24	-	-	-
<b>Unspecified</b>	<b>19 885</b>	<b>13 693</b>	<b>6 183</b>	<b>9</b>	<b>-</b>

**Appendix XVII: Number of tourists by country of residence and purpose of visit, 2013**

Country	Total	Purpose of visit			
		Business	Holiday	Study	Transit
<b>Total</b>	<b>9 536 568</b>	<b>199 865</b>	<b>8 609 778</b>	<b>71 533</b>	<b>655 392</b>
<b>Overseas</b>	<b>2 660 631</b>	<b>89 118</b>	<b>2 087 372</b>	<b>14 141</b>	<b>470 000</b>
<b>Europe</b>	<b>1 493 625</b>	<b>52 474</b>	<b>1 215 059</b>	<b>7 752</b>	<b>218 340</b>
Albania	156	4	129	-	23
Andorra	73	-	48	-	25
Austria	28 787	662	22 101	108	5 916
Azores Island	1	-	1	-	-
Belgium	46 262	1 607	37 932	267	6 456
Bosnia-Herzegovina	219	9	170	3	37
Bulgaria	2 963	143	2 219	9	592
Croatia	1 655	115	1 057	11	472
Cyprus	1 634	63	1 427	7	137
Czech Republic	6 894	272	5 729	9	884
Denmark	25 968	838	21 431	93	3 606
Estonia	976	23	789	3	161
Finland	10 605	497	8 073	61	1 974
France	133 787	4 878	105 853	822	22 234
Georgia	233	16	155	4	58
Germany	300 739	7 597	239 971	1 757	51 414
Gibraltar	2	-	2	-	-
Greece	6 380	337	5 229	33	781
Hungary	3 321	184	2 545	23	569
Iceland	807	33	579	3	192
Ireland	27 593	1 116	23 512	151	2 814
Isle Of Man	3	-	2	-	1
Italy	67 259	2 860	51 015	267	13 117
Latvia	674	39	542	3	90
Liechtenstein	280	4	206	2	68
Lithuania	1 082	51	776	5	250
Luxembourg	1 707	32	1 335	5	335
Macedonia	31	4	24	1	2

**Appendix XVII: Number of tourists by country of residence and purpose of visit, 2013 (continued)**

Country	Total	Purpose of visit			
		Business	Holiday	Study	Transit
Malta	664	42	564	-	58
Moldova	167	9	138	4	16
Monaco	104	3	83	4	14
Norway	24 343	637	18 877	264	4 565
Poland	12 856	580	9 989	38	2 249
Portugal	52 580	1 107	41 014	215	10 244
Republic of Belarus	651	44	491	4	112
Romania	2 852	164	2 125	25	538
Russian Federation	13 546	898	10 367	80	2 201
San Marino	24	-	17	-	7
Serbia and Montenegro	1 915	95	1 319	33	468
Slovakia	2 831	125	2 276	11	419
Slovenia	1 063	86	770	7	200
Spain	32 037	1 701	22 487	153	7 696
Sweden	43 498	1 670	36 348	189	5 291
Switzerland	58 933	916	44 320	223	13 474
The Netherlands	120 763	3 516	108 813	788	7 646
Turkey	13 612	928	11 291	160	1 233
UK	436 599	18 284	368 187	1 865	48 263
Ukraine	4 307	255	2 603	36	1 413
Vatican	21	1	15	-	5
Yugoslavia	168	29	113	6	20
<b>North America</b>	<b>415 966</b>	<b>10 876</b>	<b>340 654</b>	<b>2 450</b>	<b>61 986</b>
Canada	68 587	2 000	57 232	249	9 106
Saint Pierre And Miquelon	1	-	1	-	-
USA	347 378	8 876	283 421	2 201	52 880
<b>Central and South America</b>	<b>129 525</b>	<b>1 695</b>	<b>75 597</b>	<b>491</b>	<b>51 742</b>
Antigua And Barbuda	66	2	51	1	12
Argentina	19 423	187	12 445	37	6 754
Bahamas	165	5	126	7	27

**Appendix XVII: Number of tourists by country of residence and purpose of visit, 2013 (continued)**

Country	Total	Purpose of visit			
		Business	Holiday	Study	Transit
Barbados	126	12	91	3	20
Belize	61	5	42	-	14
Bermuda	63	-	52	-	11
Bolivia	1 561	14	505	4	1 038
Br Virgin Island	2	-	2	-	-
Brazil	82 730	711	45 163	232	36 624
Chile	4 036	103	2 918	16	999
Colombia	2 833	88	1 970	59	716
Costa Rica	510	14	390	2	104
Cuba	2 008	16	804	20	1 168
Dominican Republic	154	8	120	1	25
Ecuador	810	19	602	7	182
El Salvador	124	4	88	2	30
Grenada	35	2	15	2	16
Guatemala	273	28	181	4	60
Guyana	211	6	158	7	40
Haiti	141	5	72	2	62
Honduras	270	8	113	-	149
Jamaica	688	21	542	3	122
Mexico	4 077	202	3 287	24	564
Nicaragua	119	7	58	3	51
Panama	324	9	239	3	73
Paraguay	760	11	316	-	433
Peru	3 246	61	1 946	17	1 222
Puerto Rico	3	-	3	-	-
St Lucia	41	2	27	3	9
St Vincent and Grenadines	33	1	29	-	3
Suriname	73	3	64	1	5
Trinidad and Tobago	1 182	47	836	16	283
Turks And Caicos Islands	4	-	4	-	-
Uruguay	1 575	23	855	3	694
Venezuela	1 710	63	1 413	12	222
West Indies	88	8	70	-	10

**Appendix XVII: Number of tourists by country of residence and purpose of visit, 2013 (continued)**

Country	Total	Purpose of visit			
		Business	Holiday	Study	Transit
<b>Australasia</b>	<b>148 316</b>	<b>3 214</b>	<b>124 065</b>	<b>315</b>	<b>20 722</b>
Australia	124 898	2 790	104 198	241	17 669
Bouvet Island	2	-	2	-	-
Federated States of Micronesia	6	-	4	-	2
Fiji	171	12	101	4	54
French Polynesia	2	-	2	-	-
French Southerner	1	-	1	-	-
Kiribati	16	-	13	-	3
Marshall Islands	4	-	2	-	2
Nauru	7	-	5	-	2
New Guinea	1	-	-	-	1
New Zealand	22 942	394	19 557	66	2 925
Northern Mariana Island	7	-	7	-	-
Palau	2	1	-	1	-
Papua New Guinea	127	16	78	2	31
Samoa	54	1	51	-	2
Solomon Island	12	-	6	1	5
Tonga Island	17	-	17	-	-
Tuvalu	12	-	9	-	3
Vanuatu	35	-	12	-	23
<b>Middle East</b>	<b>41341</b>	<b>2 173</b>	<b>35324</b>	<b>408</b>	<b>3 436</b>
Bahrain	203	42	145	3	13
Iran	2 720	180	2 331	114	95
Iraq	303	20	220	17	46
Israel	22 116	853	19 136	49	2 078
Jordan	2 169	239	1 692	12	226
Kuwait	956	21	883	3	49
Lebanon	3 333	351	2 300	13	669
Oman	411	37	336	5	33
Palestine	208	9	161	15	23

**Appendix XVII: Number of tourists by country of residence and purpose of visit, 2013 (continued)**

Country	Total	Purpose of visit			
		Business	Holiday	Study	Transit
Qatar	254	17	233	1	3
Saudi Arabia	6 303	195	5 928	104	76
Syria	602	71	458	3	70
United Arab Emirates	1 296	96	1 150	16	34
Yemen	467	42	351	53	21
<b>Asia</b>	<b>431 858</b>	<b>18 686</b>	<b>296 673</b>	<b>2 725</b>	<b>113 774</b>
Afghanistan	296	48	232	6	10
Armenia	186	11	72	2	101
Azerbaijan	304	31	214	3	56
Bangladesh	4 896	239	3 888	53	716
Bhutan	45	3	29	-	13
Brunei Darussalam	51	3	37	2	9
Cambodia	133	6	54	2	71
China	151 053	4 867	102 061	498	43 627
East Indian Islands	1	-	-	-	1
East Timor	72	-	18	-	44
Hong Kong	3	1	2	-	-
India	112 100	7 315	85 651	787	18 347
Indonesia	6 254	286	3 108	27	2 833
Japan	41 099	1 712	26 215	71	13 101
Kazakhstan	649	45	498	5	101
Kyrgyzstan	78	6	53	2	17
Laos	48	4	32	1	11
Macau	1	-	1	-	-
Malaysia	10 544	570	8 000	158	1 816
Maldives	46	2	27	3	14
Mongolia	144	13	88	2	41
Myanmar	471	18	236	2	215
Nepal	626	56	458	17	95
North Korea	617	-	156	-	461

**Appendix XVII: Number of tourists by country of residence and purpose of visit, 2013 (continued)**

Country	Total	Purpose of visit			
		Business	Holiday	Study	Transit
Pakistan	19 474	874	15 218	157	3 225
Philippines	17 011	274	6 555	99	10 083
Singapore	10 603	516	8 622	16	1 449
South Korea	21 756	977	15 300	522	4 957
Sri Lanka	4 342	211	2 472	67	1 592
Sumatra	2	-	2	-	-
Taiwan	11 700	228	8 066	88	3 318
Tajikistan	39	6	26	1	6
Thailand	9 103	242	7 676	116	1 069
Turkmenistan	28	2	17	-	9
Uzbekistan	212	15	135	-	62
Vietnam	7 871	105	1 454	18	6 294
<b>Africa</b>	<b>6 856 052</b>	<b>110 048</b>	<b>6 507 360</b>	<b>57 295</b>	<b>181 349</b>
<b>SADC</b>	<b>6 618 866</b>	<b>100 032</b>	<b>6 320 327</b>	<b>49 390</b>	<b>149 117</b>
Angola	57 041	954	41 376	2 980	11 731
Botswana	537 131	3 793	506 669	6 552	20 117
DRC	34 066	818	29 517	1 685	2 046
Lesotho	1 461 267	4 542	1 445 775	6 398	4 552
Madagascar	6 424	88	2 433	122	3 781
Malawi	170 345	2 993	160 667	818	5 867
Mauritius	19 341	812	14 133	523	3 873
Mozambique	1 116 735	21 498	1 068 196	1 011	26 030
Namibia	222 028	25 911	167 463	7 631	21 023
Seychelles	4 849	88	4 363	35	363
Swaziland	836 467	4 040	817 548	8 830	6 049
Tanzania	38 099	1 024	30 262	804	6 009
Zambia	179 914	13 196	151 734	1 728	13 256
Zimbabwe	1 935 159	20 275	1 880 191	10 273	24 420
Pakistan	19 474	874	15 218	157	3 225

**Appendix XVII: Number of tourists by country of residence and purpose of visit, 2013 (continued)**

Country	Total	Purpose of visit			
		Business	Holiday	Study	Transit
<b>'Other' Africa</b>	<b>237 186</b>	<b>10 016</b>	<b>187 033</b>	<b>7 905</b>	<b>32 232</b>
<b>East and Central Africa</b>	<b>88 521</b>	<b>4 351</b>	<b>68 087</b>	<b>4 179</b>	<b>11 904</b>
Burundi	1 772	47	1 079	39	607
Cameroon	6 203	304	4 167	410	1 322
Central African Republic	197	4	138	15	40
Chad	486	17	362	49	58
Comoros	369	12	247	14	96
Congo	4 551	146	3 593	323	489
Djibouti	91	9	72	-	10
Equatorial Guinea	497	63	330	81	23
Eritrea	720	34	558	20	108
Ethiopia	9 049	341	7 580	157	971
Gabon	7 864	101	6 654	538	571
Kenya	35 582	2 336	27 374	1 613	4 259
Reunion	1	-	-	-	1
Rwanda	3 647	149	2 607	269	622
Sao Tome and Principe	215	9	146	3	57
Somalia	115	3	83	5	24
Tristan Da Cunha	1	-	1	-	-
Uganda	17 161	776	13 096	643	2 646
<b>West Africa</b>	<b>131 758</b>	<b>4 226</b>	<b>107 099</b>	<b>3 074</b>	<b>17 359</b>
Benin	1 930	94	1 631	23	182
Burkina Faso	1 052	77	697	22	256
Cape Verde Island	785	21	642	9	113
Côte D'Ivoire	2 988	214	2 130	98	546
Gambia	1 051	30	490	10	521
Ghana	27 361	917	22 199	305	3 940
Guinea	2 866	53	2 089	52	672
Guinea-Bissau	193	5	91	4	93
Liberia	716	22	488	15	191



**Appendix XVII: Number of tourists by country of residence and purpose of visit, 2013 (concluded)**

Country	Total	Purpose of visit			
		Business	Holiday	Study	Transit
Mali	1 516	63	1 063	23	367
Mauritania	445	41	301	-	103
Niger	533	24	452	16	41
Nigeria	84 552	2 334	71 103	2 413	8 702
Saint Helena	59	-	59	-	-
Senegal	3 926	224	2 449	36	1 217
Sierra Leone	995	51	676	28	240
Togo	790	56	539	20	175
<b>North Africa</b>	<b>16 907</b>	<b>1 439</b>	<b>11 847</b>	<b>652</b>	<b>2 969</b>
Algeria	2 082	164	1 722	56	140
Egypt	7 908	644	5 412	97	1 755
Libya	1 441	65	730	258	388
Morocco	1 601	144	1 228	34	195
South Sudan	900	53	737	39	71
The Sudan	1 511	183	1 005	151	172
Tunisia	1 440	186	992	17	245
Western Sahara	24	-	21	-	3
<b>Unspecified</b>	<b>19 885</b>	<b>699</b>	<b>15 046</b>	<b>97</b>	<b>4 043</b>

**Appendix XVIII: Number of tourists by sex, age group and region of residence, 2013**

Sex and age group	Total	Region of residence			
		Overseas	SADC	'Other' Africa	Unspecified
<b>All</b>	<b>9 536 568</b>	<b>2 660 631</b>	<b>6 618 866</b>	<b>237 186</b>	<b>19 885</b>
0-14	553 587	175 237	365 162	12 977	211
15-64	8 524 105	2 183 188	6 101 597	219 962	19 358
65+	453 716	301 442	147 773	4 194	307
Unspecified	5 160	764	4 334	53	9
<b>Male</b>	<b>5 369 780</b>	<b>1 515 109</b>	<b>3 679 355</b>	<b>162 310</b>	<b>13 006</b>
0-14	276 433	90 297	179 483	6 547	106
15-64	4 859 068	1 263 046	3 430 350	152 996	12 676
65+	231 590	161 361	67 260	2 750	219
Unspecified	2 689	405	2 262	17	5
<b>Female</b>	<b>4 158 502</b>	<b>1 143 408</b>	<b>2 933 400</b>	<b>74 829</b>	<b>6 865</b>
0-14	277 146	84 939	185 672	6 430	105
15-64	3 658 541	918 638	2 666 299	66 933	6 671
65+	221 021	139 577	79 916	1 441	87
Unspecified	1 794	254	1 513	25	2
<b>Unspecified</b>	<b>8 286</b>	<b>2 114</b>	<b>6 111</b>	<b>47</b>	<b>14</b>
0-14	8	1	7	-	-
15-64	6 496	1 504	4 948	33	11
65+	1 105	504	597	3	1
Unspecified	677	105	559	11	2

**Appendix IXX: Number of tourists by sex, age group and month of arrival, 2013**

Sex and age group	Total	Month of arrival											
		Jan	Feb	Mar	Apr	May	Jun	Jul	Aug	Sep	Oct	Nov	Dec
<b>All</b>	<b>9 536 568</b>	<b>850 759</b>	<b>715 769</b>	<b>815 075</b>	<b>803 475</b>	<b>699 658</b>	<b>677 085</b>	<b>789 168</b>	<b>829 021</b>	<b>783 933</b>	<b>794 494</b>	<b>835 196</b>	<b>942 935</b>
0-14	553 587	47 711	31 377	48 674	48 319	30 041	31 398	51 224	63 099	32 777	35 157	35 644	98 166
15-64	8 524 105	765 518	639 741	723 332	718 752	639 968	620 952	711 922	732 753	709 296	706 904	746 885	808 082
65+	453 716	36 948	44 173	42 519	35 818	29 113	24 265	25 561	32 652	41 390	51 938	52 661	36 678
Unspecified	5 160	582	478	550	586	536	470	461	517	470	495	6	9
<b>Male</b>	<b>5 369 780</b>	<b>498 239</b>	<b>413 874</b>	<b>453 545</b>	<b>455 864</b>	<b>396 734</b>	<b>386 552</b>	<b>439 636</b>	<b>454 488</b>	<b>443 058</b>	<b>447 212</b>	<b>473 132</b>	<b>507 446</b>
0-14	276 433	23 774	15 780	24 389	24 451	14 815	15 709	25 644	31 572	16 335	17 574	17 659	48 731
15-64	4 859 068	454 969	374 978	407 324	412 757	366 499	358 085	400 637	406 024	405 515	403 325	428 534	440 421
65+	231 590	19 164	22 877	21 541	18 338	15 127	12 532	13 116	16 649	20 967	26 057	26 933	18 289
Unspecified	2 689	332	239	291	318	293	226	239	243	241	256	6	5
<b>Female</b>	<b>4 158 502</b>	<b>351 691</b>	<b>301 139</b>	<b>360 517</b>	<b>346 742</b>	<b>302 144</b>	<b>289 781</b>	<b>348 742</b>	<b>373 692</b>	<b>340 027</b>	<b>346 476</b>	<b>362 062</b>	<b>435 489</b>
0-14	277 146	23 935	15 597	24 284	23 865	15 226	15 689	25 579	31 527	16 441	17 583	17 985	49 435
15-64	3 658 541	309 908	264 184	315 204	305 314	272 855	262 284	310 644	326 074	303 105	302 959	318 349	367 661
65+	221 021	17 669	21 168	20 848	17 369	13 886	11 630	12 362	15 898	20 316	25 758	25 728	18 389
Unspecified	1 794	179	190	181	194	177	178	157	193	165	176	-	4
<b>Unspecified</b>	<b>8 286</b>	<b>829</b>	<b>756</b>	<b>1 013</b>	<b>869</b>	<b>780</b>	<b>752</b>	<b>790</b>	<b>841</b>	<b>848</b>	<b>806</b>	<b>2</b>	<b>-</b>
0-14	8	2	-	1	3	-	-	1	-	1	-	-	-
15-64	6 496	641	579	804	681	614	583	641	655	676	620	2	-
65+	1 105	115	128	130	111	100	103	83	105	107	123	-	-
Unspecified	677	71	49	78	74	66	66	65	81	64	63	-	-

## 7. DEFINITION OF TERMS

### Definitions used by the United Nations World Tourism Organisation (UNWTO)

- **Traveller** is someone who moves between different geographical locations for any purpose and any duration. Note: in this publication, the geographical locations are countries. Hence in this report, the term traveller refers to an international traveller.
- **Visitor** refers to any person travelling to a place other than that of his/her usual environment for less than 12 months and whose main purpose of the trip is other than the exercise of an activity remunerated from within the place visited.
- **Same-day visitor** is a visitor who visits a place for less than one night.
- **Tourist** (overnight visitor) is a visitor who stays at least one night in collective or private accommodation in the place visited for less than twelve months.
- **Tourism** comprises the activities of persons travelling to, and staying in places outside their usual environment, for not more than one uninterrupted year, for leisure, business and other purposes. The usual environment of a person consists of a certain area around his/her place of residence, plus all other places he/she frequently visits.

### Definitions used specifically in this report

- **South African resident** refers to either a South African citizen or a non-South African citizen with a South African permanent residence permit.
- **Foreign traveller** refers to a traveller who is not a South African citizen or permanent resident.
- **Country** refers to individual countries within a region. (Note: The country of residence is used here and not the country from which the visitor travelled).
- **Region** refers to the following country classification: Overseas, SADC and 'Other' Africa. Overseas consists of Europe, North America, Central and South America, Australasia, the Middle East and Asia.
- **Overseas:** refers to all countries outside Africa
- **Africa** refers to all the countries in Africa (both mainland and island countries).
- **SADC** refers to the fourteen countries, excluding South Africa, that belong to the Southern African Development Community
- **'Other' Africa** refers to all countries in Africa that are not members of the SADC. They are grouped as: East and Central Africa, West Africa and North Africa.

### Symbol used

- = Nil

## Limitations

Stats SA is unable to provide tourism information on South African residents. This is because the DHA does not collect data on purpose of travel and intended duration of stay from departures or purpose of travel and days spent away from arrivals.

## Related publications

Tourism statistics are also published in the monthly Statistical Release P0351: *Tourism and Migration* and in the quarterly *Bulletin of Statistics* and *Stats in Brief*

## 8. OTHER STATS SA REPORTS

The following reports on tourism and migration have been published:

- No. 205 - South African residents travelling abroad 1952-1957
- No. 286 - Statistics of immigrants and emigrants 1924-1964
- No. 297 - Statistics of migration 1963 and earlier years
- No. 07-20-01 - External migration 1964
- No. 07-20-02 - External migration 1965
- No. 19-01-01 - Migration Statistics: Immigrants and Emigrants 1966 to 1969
- No. 19-02-01 - Migration Statistics: Tourists 1966 to 1969
- No. 19-01-02 - Migration Statistics: Tourists Immigrants and Emigrants 1970 and 1971
- No. 19-01-03 - Tourism and migration 1972-1975
- No. 19-01-04 - Tourism and migration 1976
- No. 19-01-05 - Tourism and migration 1977
- No. 19-01-06 - Tourism and migration 1978
- No. 19-01-07 - Tourism and migration 1979
- No. 19-01-08 - Tourism and migration 1980
- No. 19-01-09 - Tourism and migration 1981
- No. 19-01-10 - Tourism and migration 1982
- No. 19-01-11 - Tourism and migration 1983
- No. 19-01-12 - Tourism and migration 1984
- No. 19-01-13 - Tourism and migration 1985
- No. 19-01-14 - Tourism and migration 1986
- No. 03-51-02 (1987) - Tourism and migration
- No. 03-51-02 (1988) - Tourism and migration
- No. 03-51-02 (1989) - Tourism and migration
- No. 03-51-02 (1990) - Tourism and migration
- No. 03-51-02 (1991) - Tourism and migration
- No. 03-51-02 (1992) - Tourism and migration
- No. 03-51-02 (1993) - Tourism and migration
- No. 03-51-02 (1994) - Tourism and migration
- No. 03-51-02 (1995) - Tourism and migration
- No. 03-51-02 (1996) - Tourism and migration
- No. 03-51-02 (1997) – Tourism
- No. 03-51-02 (1998) - Tourism
- No. 03-51-02 (1999) - Tourism
- No. 03-51-02 (2000) - Tourism
- No. 03-51-02 (2001) - Tourism
- No. 03-51-02 (2002) -Tourism
- No. 03-51-02 (2003) -Tourism
- No. 03-51-02 (2004, 2005 and 2006) –Tourism
- No. 03-51-02 (2007) -Tourism
- No. 03-51-02 (2008) -Tourism
- No. 03-51-02 (2009) - Tourism
- No. 03-51-02 (2011) -Tourism
- No. 03-51-02 (2012) -Tourism