



# THE LEADING ECONOMIC INDICATORS

## JULY 2014



## LIST OF TABLES

### Page Number

TABLE 1(a): KENYA CONSUMER PRICE INDICES AND INFLATION RATE .....	8
TABLE 3: INTEREST RATES (%) .....	10
TABLE 5 (a): MONEY SUPPLY .....	13
TABLE 5B: *GROSS FOREIGN EXCHANGE RESERVES.....	15
TABLE 9(A): AVERAGE MONTHLY RETAIL PRICES FOR DRY MAIZE IN THE YEAR 2013 .....	20
TABLE 9(B): AVERAGE MONTHLY RETAIL PRICES FOR DRY MAIZE IN THE YEAR 2014 .....	20
TABLE 9(C): AVERAGE MONTHLY RETAIL PRICES FOR DRY BEANS IN THE YEAR 2013 .....	22
TABLE 10: EXPORT OF COFFEE, TEA AND HORTICULTURAL PRODUCE .....	24
TABLE 11: MONTHLY EXPORTS OF FRESH HORTICULTURAL PRODUCE .....	25
TABLE 12: KENYA'S EXTERNAL TRADE, JAN 2013 – JUNE 2014 .....	26
TABLE 13(A): MAJOR DESTINATIONS OF DOMESTIC EXPORTS, .....	27
TABLE 13 (B): DOMESTIC EXPORTS BY BROAD ECONOMIC CATEGORY .....	28
TABLE 14(A): MAJOR ORIGINS OF IMPORTS, JAN 2013 -JUNE 2014 .....	29
TABLE 14 (B): IMPORTS BY BROAD ECONOMIC CATEGORY .....	30
TABLE 15(A): LOCAL ELECTRICITY GENERATION BY SOURCE.....	31
TABLE 15(B): GENERATION AND CONSUMPTION OF ELECTRICITY .....	32
TABLE 15 (C): CONSUMPTION OF PETROLEUM FUELS .....	33
TABLE 15 (D): AVERAGE RETAIL PRICES FOR SELECTED FUEL PRODUCTS WITHIN NAIROBI.....	35
TABLE 15 (E): AVERAGE RETAIL PRICES FOR SELECTED FUELS IN KENYA .....	37
TABLE 15(F): MURBAN ADNOC PRICES JAN 2009- JUNE 2014.....	39
TABLE 16: VALUE OF BUILDING PLANS APPROVED BY NAIROBI CITY COUNCIL (NCC) .....	40
TABLE 17(A): DOMESTIC PRODUCTION OF SUGAR.....	40
TABLE 17(B): PRODUCTION OF SOFT DRINKS .....	41
TABLE 17(C): PRODUCTION OF ASSEMBLED VEHICLES.....	41
TABLE 17(D): PRODUCTION OF GALVANISED SHEETS .....	42
TABLE 17(E): CEMENT PRODUCTION AND CONSUMPTION.....	42
TABLE 17(F): MILK INTAKES IN THE FORMAL SECTOR .....	43
TABLE (19A): JOMO KENYATTA INT. AIRPORT INTERNATIONAL FLIGHTS ONLY- EMBARKED PASSENGERS BY PORT OF DESTINATION.....	46
TABLE (19B): JOMO KENYATTA INT. AIRPORT INTERNATIONAL FLIGHTS ONLY- LANDED PASSENGERS BY PORT OF ORIGIN.....	48
TABLE 19 C: NEW VEHICLE REGISTRATION .....	50

## LIST OF FIGURES

	Page Number
FIG. 1:	INFLATION RATES..... 9
FIG 2:	END OF MONTH MEAN EXCHANGE RATE OF KENYA SHILLINGS AGAINST MAJOR SELECTED CURRENCIES..... 10
FIG 3:	INTEREST RATES..... 11
FIG 4:	NAIROBI STOCK EXCHANGE SHARES INDEX ..... 12
FIG 5:	MONEY SUPPLY (M3)..... 14
FIG 6:	FOREIGN EXCHANGE RESERVES ..... 16
FIG.7:	COFFEE SALES AT THE NAIROBI COFFEE EXCHANGE ..... 17
FIG.8:	TEA PRODUCTION ..... 18
FIG.9:	CANE DELIVERIES ..... 19
FIG 10:	ELECTRICITY GENERATION BY SOURCE ..... 31
FIG 11:	ELECTRICITY GENERATION, CONSUMPTION AND POWER LOSSES ..... 33
FIG 12(A):	AVERAGE RETAIL PRICES OF SELECTED PETROLEUM PRODUCTS..... 36
FIG 12(B):	AVERAGE PRICES FOR LPG IN KENYA ..... 38
FIG 13:	TREND FOR MURBAN ADNOC CRUDE OIL PRICES ..... 39
FIG 15:	VISITORS ARRIVING IN KENYA THROUGH THE MAIN AIRPORTS ..... 44
FIG 16:	J.K.I.A. PASSENGERS BY REGION OF DESTINATION ..... 47
FIG 17:	J.K.I.A. PASSENGERS BY REGION OF ORIGIN ..... 49

## **KEY HIGHLIGHTS**

### **OVERVIEW**

The Leading Economic Indicators for July 2014 highlights trends in Consumer Price Indices (CPI) and inflation, interest rates, exchange rates, international trade, agriculture, energy, manufacturing, building and construction, tourism and transport.

### **MACROECONOMIC INDICATORS**

Consumer Price Index (CPI) increased from 149.91 points in June 2014 to 150.60 points in July 2014. The overall rate of inflation rose from 7.39 per cent to 7.67 per cent during the same period. In the month of July, the Kenyan Shilling depreciated against major currencies except the Euro and the Tanzanian Shilling.

The average yield rate for the 91-day Treasury bills, which is a benchmark for the general trend of interest rates, dropped to 9.78 per cent in July 2014 from 9.81 per cent in June 2014. The inter-bank rates increased to 7.98 per cent during the period. The Nairobi Securities Exchange 20 share index rose from 4,885 points in June 2014 to 4,906 points in July 2014, while the total number of shares traded decreased from 731 million to 625 million shares during the same period. The total value of NSE shares traded decreased substantially from KSh 18.2 billion to KSh 15.0 billion over the same period. Broad money supply (M3), a key indicator for monetary policy formulation expanded from KSh 2,129.9 billion in May 2014 to KSh 2,329.0 billion in June 2014. Gross Foreign Exchange Reserves expanded from KSh 731.6 billion in May 2014 to KSh 922.1 billion in June 2014 while Net Foreign Exchange Reserves increased from Ksh 365.3 to Ksh 531.4 billion over the same period.

#### **A). AGRICULTURE**

The quantity of coffee auctioned at the Nairobi Coffee Exchange declined from 3,747 MT in May 2014 to 2,860 MT in June 2014 while its average auction price increased from KSh 349.47 per kilogram to KSh 357.96 per kilogram in the same period. The quantity of processed tea decreased from 41,186 MT in May 2014 to 31,945 MT in June 2014 but its average auction price dropped from KSh 179.49 to KSh 177.49 per kilogram over the same period.

Average price for dry maize dropped from KSh 41.33 per kilogram in June 2014 to KSh 40.46 per kilogram in July 2014 while the average price for dry beans was KSh 75.16 per Kilogram in July 2014. Milk deliveries to formal processors rose from 43.5 million litres in May 2014 to 46.0 million litres in June 2014.

#### **B). INTERNATIONAL TRADE**

Quantity of coffee exported expanded from 4,587.4 MT in June 2014 to 5,424.5 MT in July 2014 while its value increased from KSh 2,006.8 million to KSh 2,383.4 million over the same period. The quantity of tea exported

rose from 39,010.7 MT in June 2014 to 42,393.4 MT in July 2014, while its value increased from KSh 7,692.3 million to KSh 8,468.0 million during the same period

Volume of trade increased from KSh 157.9 billion in June 2014 to KSh 191.7 billion in July 2014. The total value of exports declined from KSh 44,160.3 million to 43,001.1 million during the same period. Value of imports expanded to KSh 148,739.6 million in July 2014 from KSh 113,690.2 in June 2014. Domestic exports by Broad Economic Category (BEC) indicated that food and beverages was the main export category in July 2014 and accounted for 47.7 per cent of exports, while the value of non-food industrial supplies and consumer goods not elsewhere specified registered 21.5 and 27.3 per cent shares, respectively. BEC imports indicate that industrial supplies (non-food) was one of the main import category in July 2014 with a share of 26.3 per cent, while the values of fuel and lubricants, machinery & other capital equipment and transport equipment registered shares of 19.5, 14.9 and 25.4 per cent respectively. Food and beverage recorded a share of 5.4 per cent while consumer goods not elsewhere specified recorded a share of 7.3 per cent.

### **C). ENERGY**

Total electricity generation increased from 744.97 million KWh in June 2014 to 775.93 million KWh in July 2014. Domestic consumption of electricity declined from 648.30 million KWh in June 2014 to 549.33 million KWh in July 2014. The total consumption of petroleum products expanded to 334.52 thousand MT in June 2014 from 313.09 thousand MT in May 2014. Average national domestic retail oil prices of motor gasoline premium went up from a KSh 115.43 per litre in June 2014 to KSh 116.67 per litre retailed in July 2014. The price of light diesel dropped to retail at KSh 105.59 in July 2014 from KSh 105.73 in June 2014. The average price for Kerosene increased to retail at KSh 85.03 from KSh 84.04 during the same period. The price of a 13-Kg cylinder of gas averaged KSh 3,042.80. In the international market, the price of Murban crude oil in July 2014 averaged at US Dollars 113.95 per barrel, compared to US Dollars 112.15 in June 2014.

### **D). MANUFACTURING, BUILDING AND CONSTRUCTION**

The quantity of cement produced went up from 460,205 MT in June 2014 to 474,254 MT in July 2014. Consumption of cement increased from 399,525 MT in June 2014 to 433,709 MT in July 2014. The quantity of sugar produced declined from 44,094 MT in May 2014 to 42,866 MT in June 2014. Production of assembled vehicles increased from 773 units in May 2014 to 779 units in June 2014. The manufacture of soft drinks declined from 41,352 thousand litres in May 2014 to 39,041 thousand litres in June 2014.

### **E). TOURISM AND TRANSPORT**

The total number of visitors arriving through Jomo Kenyatta (JKIA) and Moi International Airports declined from 58,301 in May 2014 to 47,307 in June 2014. The number of passengers who embarked at Jomo Kenyatta International Airport (JKIA) expanded from 174,682 in April 2014 to 174,920 in May 2014, while passengers who landed decreased from 172,756 persons to 171,018 persons in the same period. The total number of vehicles

registered declines from 14,109 in May 2014 to 14,011 in June 2014. Station wagon and motor cycles accounted for 29.0 per cent and 43.2 per cent respectively, of the total motor vehicles registered in June 2014.

**Table 1(a): Kenya Consumer Price Indices**

Kenya CPI: Base period February 2009=100

Group	Nairobi	Nairobi	Nairobi	Nairobi Combined	Rest of Urban Areas	Kenya CPI
	Lower Income	Middle Income	Upper Income			
<b>2013</b>						
January	138.55	125.13	126.64	134.86	136.15	135.62
February	139.72	125.79	126.91	135.88	137.08	136.59
March	141.17	126.89	127.77	137.22	138.48	137.96
April	142.91	127.57	127.88	138.64	139.72	139.28
May	142.84	127.08	127.25	138.45	140.27	139.52
June	142.68	126.80	126.93	138.26	140.53	139.59
July	142.94	127.56	127.09	138.63	140.73	139.87
August	142.82	127.61	127.72	138.58	141.49	140.29
September	146.54	131.11	132.57	142.29	143.19	142.82
October	146.18	130.91	132.47	141.98	143.28	142.75
November	146.29	130.66	132.40	142.00	143.94	143.14
December	146.93	130.88	132.51	142.51	144.79	143.85
<b>2014</b>						
January	148.47	131.93	134.11	143.94	146.42	145.40
February	148.75	131.99	134.32	144.16	147.21	145.95
March	149.36	132.79	134.63	144.81	147.87	146.61
April	150.57	133.22	135.10	145.80	149.88	148.20
May	151.51	133.91	136.39	146.69	151.81	149.70
June	151.39	134.48	136.83	146.76	152.12	149.91
July	151.71	135.45	137.30	147.25	152.95	150.60

NB: 1. Nairobi Lower Income group - Households spending less than KSh 23,670 in October 2005

2. Nairobi Middle Income Group- Households spending between KSh 23,671 to KSh 119,999 in October 2005

3. Nairobi Upper Income Group - Households spending above KSh 120,000 in October 2005

Rest of Urban areas includes Mombasa, Malindi, Machakos, Nyeri, Thika, Nakuru, Kisii, Kisumu, Eldoret, Nyahururu, Garissa and Bungoma.

**Table 1(b): Kenya Inflation rate**

Inflation Rates						
Period	Nairobi	Nairobi	Nairobi	Nairobi Combined	Rest of Urban Areas	Kenya CPI
	Lower Income	Middle Income	Upper Income			
Jan'13/Jan'12	3.23	2.86	2.37	3.12	4.06	3.67
Feb'13/Jan'12	3.97	3.64	2.65	3.85	4.88	4.45
Mar'13/Mar'12	3.16	3.56	2.94	3.24	4.72	4.11
April'13/April'12	3.85	3.31	2.39	3.67	4.47	4.14
May'13/May'12	3.51	2.77	1.82	3.28	4.59	4.05
June'13/June'12	4.75	2.83	1.68	4.21	5.40	4.91
July'13/July'12	6.33	4.59	2.28	5.79	6.18	6.02
Aug'13/Aug'12	7.23	4.57	2.38	6.46	6.83	6.67
Sep'13/Sep'12	9.67	7.11	6.16	8.97	7.82	8.29
Oct'13/Oct'12	8.99	6.32	5.37	8.25	7.43	7.76
Nov'13/Nov'12	8.25	5.92	5.50	7.63	7.17	7.36
Dec'13/Dec'12	7.65	5.97	5.62	7.20	7.11	7.15
Jan'14/Jan'13	7.16	5.44	5.89	6.73	7.54	7.21
Feb'14/Jan'13	6.86	4.93	5.84	6.10	7.38	6.86
Mar'14/Mar'13	5.80	4.65	5.38	5.53	6.78	6.27
Apr'14/Apr'13	5.36	4.43	5.64	5.16	7.27	6.41
May'14/May'13	6.07	5.37	7.18	5.95	8.23	7.30
June'14/June'13	6.10	6.06	7.81	6.15	8.25	7.39
July'14/July'13	6.13	6.19	8.04	6.21	8.68	7.67

Fig. 1: Inflation rates

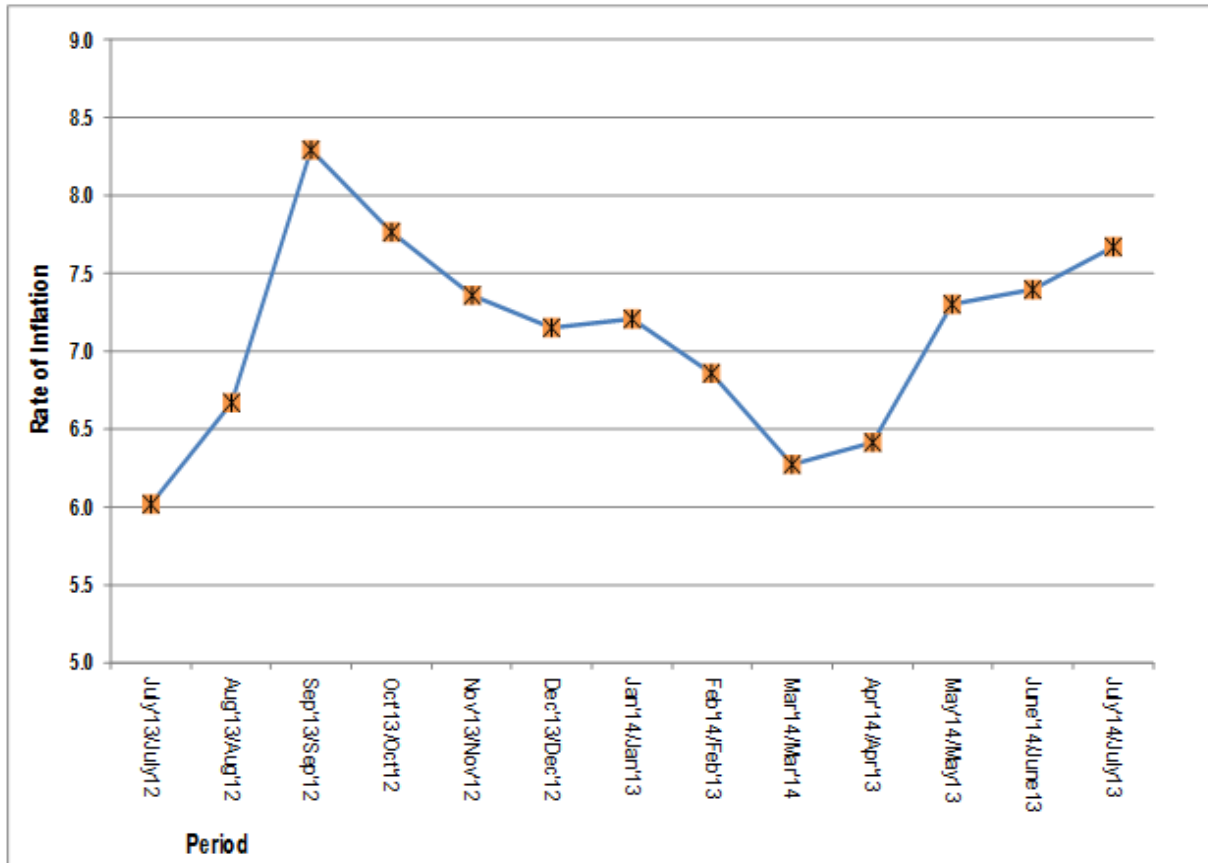


Table 2: Mean\* Foreign Exchange rates of Kenyan Shilling against Selected Major Currencies at the end of the Month

Year	2013								2014						
	May	June	July	Aug	Sep	Oct	Nov	Dec	Jan	Feb	Mar	April	May	June	July
1 US Dollar	84.15	85.49	86.86	87.49	87.41	85.31	86.10	86.65	86.21	86.28	86.49	86.72	87.41	87.61	87.77
1 Sterling Pound	128.73	132.42	131.95	135.47	138.54	137.31	138.60	141.37	141.99	142.81	143.8	145.08	147.29	148.15	150.04
1 Euro	109.18	112.81	113.66	116.51	116.67	116.33	116.2	118.18	117.5	112.94	119.60	119.78	120.09	119.16	119.02
100 Japanese Yen	83.37	87.77	87.23	89.39	88.14	87.24	86.21	83.51	82.92	84.52	84.58	84.59	85.84	85.88	86.32
1 SA Rand	9.01	8.51	8.76	8.69	8.77	8.60	8.43	8.34	7.96	7.86	8.04	8.20	8.39	8.20	8.22
USHS/KES	30.74	30.34	29.81	29.48	29.41	29.74	29.31	29.20	29.00	28.61	29.27	29.19	28.97	29.44	29.97
TSHS/KES	19.36	19.13	18.70	18.50	18.48	18.87	18.68	18.63	18.68	18.82	18.88	18.86	18.92	19.18	18.97

Source: Central Bank of Kenya

\* Mean of commercial banks buying and selling exchange rates prevailing at the end of the month



Fig 2: End of Month Mean Exchange rate of Kenya Shillings against Major Selected Currencies

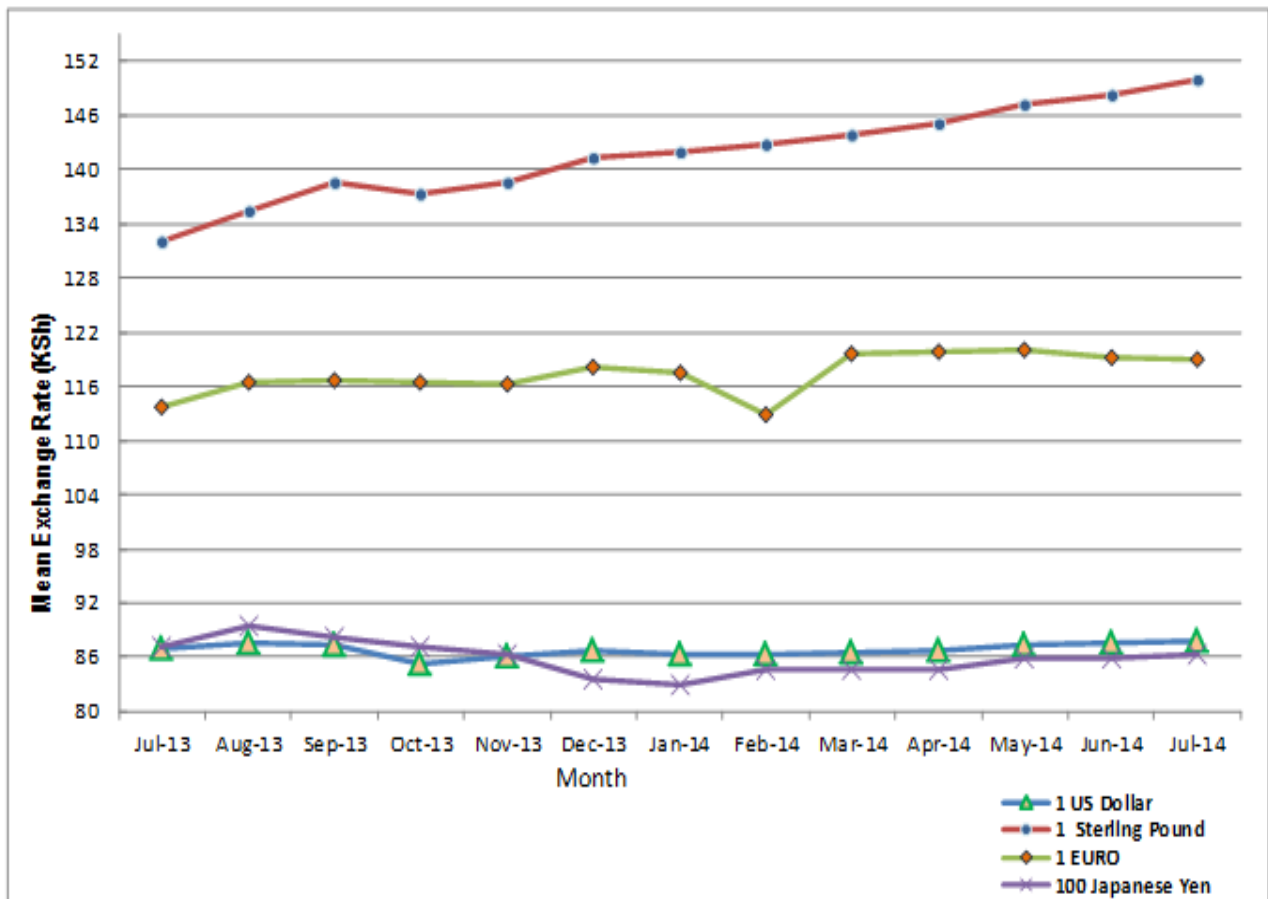


Table 3: Interest rates (%)

Month/Year	Average Yield Rates 91 - Days Treasury Bills	Rates for Commercial Banks Loans and Advances (Weighted Average)	Overdraft Rates	Inter - Bank Rates	Savings (Commercial Banks Rates)
<b>2013</b>					
January	8.10	18.13	17.97	5.89	1.65
February	8.38	17.84	17.68	9.05	1.61
March	9.88	17.78	17.48	8.76	1.42
April	10.38	17.87	17.71	7.87	1.45
May	9.46	17.44	17.60	7.15	1.53
June	6.21	16.97	16.92	7.22	1.73
July	5.92	17.02	17.00	7.99	1.64
August	10.03	16.96	16.89	8.96	1.67
September	9.58	16.86	16.42	7.82	1.64
October	9.17	17.00	16.96	10.68	1.63
November	9.95	16.89	16.50	10.76	1.58
December	9.53	16.99	16.51	9.12	1.58
<b>2014</b>					
January	9.26	17.03	16.83	10.65	1.56
February	9.16	17.06	16.88	9.06	1.49
March	8.97	16.91	16.44	6.63	1.56
April	8.80	16.70	16.44	7.57	1.53
May	8.82	16.97	17.85	7.77	1.54
June	9.81	16.36	15.88	6.95	1.50
July	9.78	16.91	17.12	7.98	1.33

Source: Central Bank of Kenya

Fig 3: Interest rates

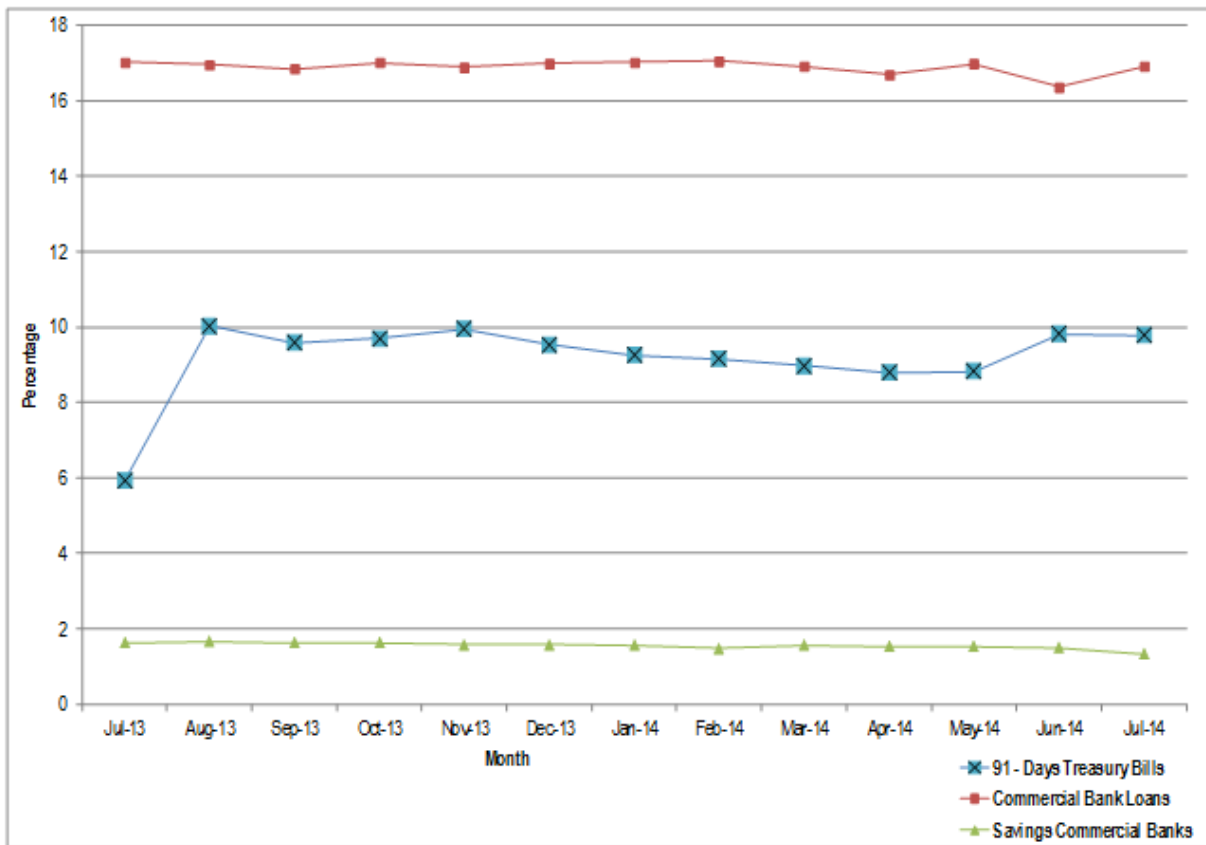


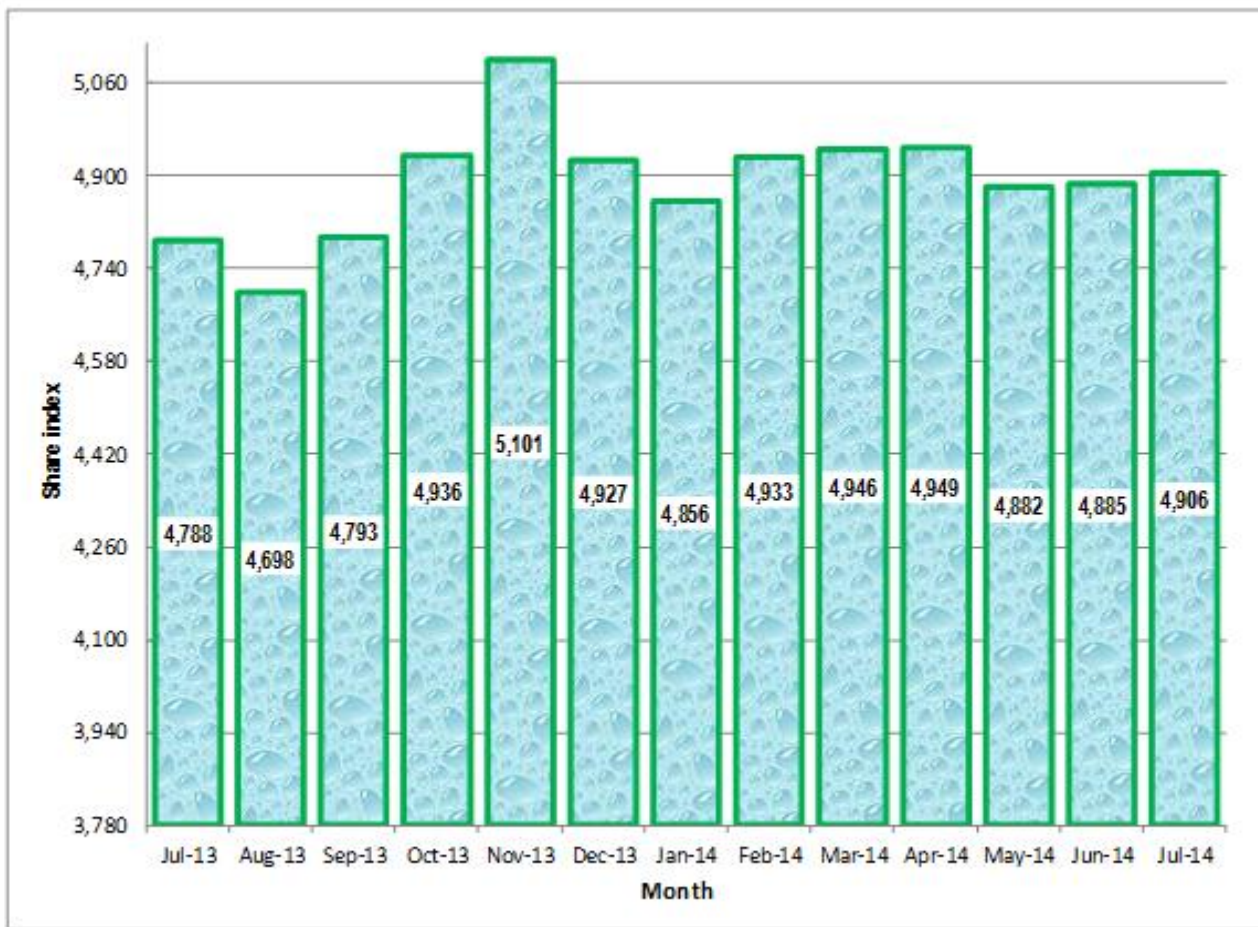
Table 4: Nairobi Securities Exchange

Base Jan 1966=100

Month	Number of Transactions	Number of Shares (Million)	Value of Shares (Million KSh)	NSE 20 Share Index
<b>2013</b>				
January	32,416	519.0	8,464	4,417
February	31,529	692.0	14,693	4,519
March	34,443	571.0	11,183	4,861
April	39,859	597.0	9,856	4,765
May	39,727	868.0	16,070	5,006
June	34,587	728.0	13,021	4,598
July	34,341	616.0	11,205	4,788
August	33,957	670.0	20,797	4,698
September	31,849	489.0	10,062	4,793
October	39,915	804.0	15,937	4,936
November	43,129	645.0	13,129	5,101
December	30,575	466.0	11,329	4,927
<b>2014</b>				
January	49,348	639.0	15,970	4,856
February	39,160	545.0	14,743	4,933
March	42,604	544.0	13,042	4,946
April	40,979	728.0	15,750	4,949
May	47,131	854.0	23,022	4,882
June	38,483	731.0	18,190	4,885
July	41,506	625.0	15,043	4,906

Source: Nairobi Securities Exchange Limited

Fig. 4: Nairobi Securities Exchange 20 Share Index



**Table 5 (a): Money Supply**

KSh Million

As at end of month	Money and Quasi-money (M2)****			Total (M2)	Broad Money (M3)***	% Change
	MoneyY (M1)*	Quasil - Money (Commercial Banks)**	(NBFIs)			
<b>2013</b>						
January	704,022	730,340	22,437	1,455,976	1,729,897	0.15
February	715,446	735,440	20,487	1,471,240	1,747,890	1.04
March	720,697	733,124	23,963	1,477,677	1,755,742	0.45
April	753,865	754,407	24,642	1,532,641	1,802,280	2.65
May	751,365	768,314	24,183	1,543,737	1,823,398	1.17
June	752,825	769,941	25,252	1,547,882	1,820,879	-0.14
July	756,360	772,935	24,488	1,554,003	1,835,803	0.82
August	758,948	792,216	24,486	1,575,523	1,849,974	0.77
September	802,365	789,704	25,293	1,617,219	1,885,780	1.94
October	810,932	782,519	24,348	1,617,672	1,900,194	0.76
November	828,450	805,153	24,799	1,658,234	1,953,620	2.81
December	827,069	818,891	25,815	1,671,594	1,996,241	2.18
<b>2014</b>						
January	843,802	826,894	28,890	1,699,451	2,026,568	1.52
February	860,767	845,454	27,729	1,733,813	2,030,488	0.19
March	868,067	863,018	27,840	1,758,774	2,060,313	1.47
April	881,421	871,676	27,178	1,780,145	2,100,610	1.96
May	883,570	899,397	27,722	1,810,409	2,129,877	1.39
June	1,085,745	899,594	26,939	2,011,993	2,329,027	9.35

Source: Central Bank of Kenya

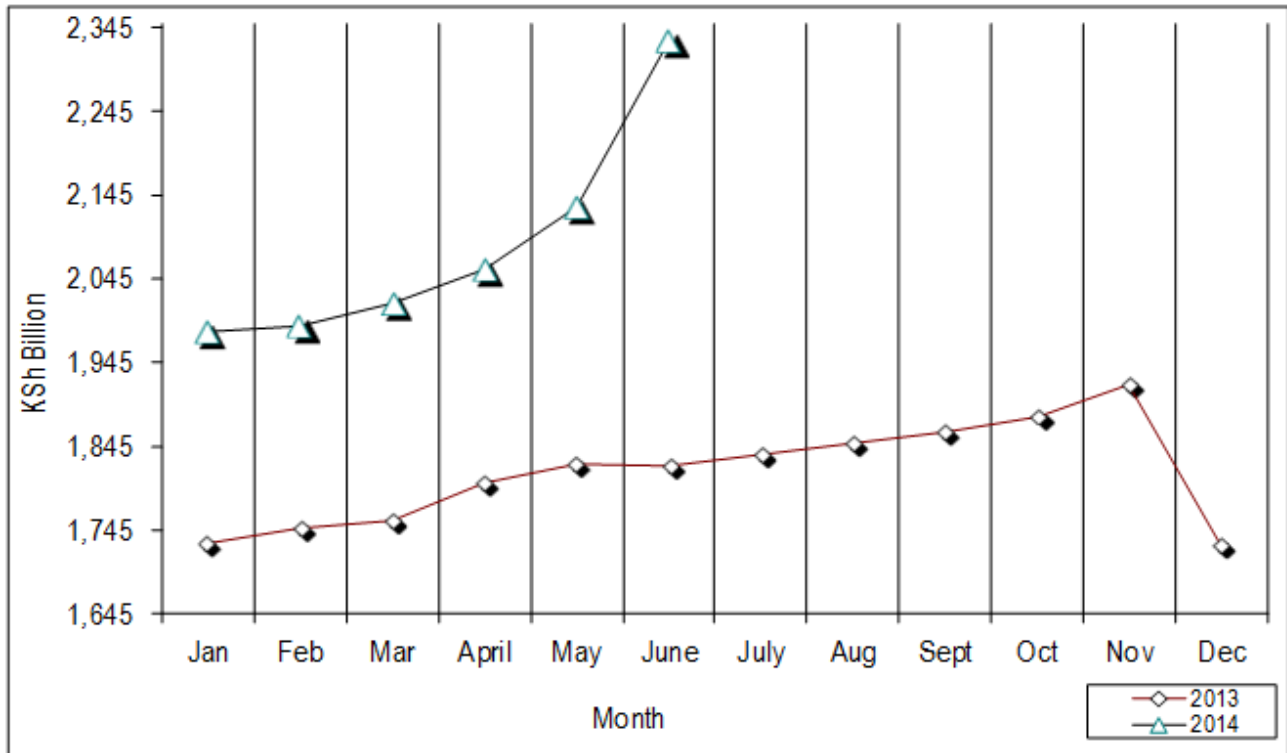
\* Currency in circulation less cash in banks plus all demand deposits except those of National &amp; County government, Banks, non-residents and foreign currency deposits

\*\* All other deposits in commercial banks, except those of National government.

\*\*\* Broad Money (M3) includes M2 and Quasi - Money supplied by Non-Bank Financial Institutions. It therefore excludes NBFIs deposits in banks and their cash-in- till holdings

\*\*\*\*Broad money (M2) is the sum of M1, Quasi money in Banks and Quasi money in NBFIs less sum of NBFIs deposits in banks and cash in tills of NBFIs.

Fig 5: Money Supply (M3)



**Table 5b: Gross Foreign Exchange Reserves\***

KSh Million							
Month	Central Monetary Authority		Total	Foreign Assets		Gross Total	Net of Foreign Exchange Liabilities <sup>^</sup>
	Central Bank	National Government**		Commercial Banks	NBFI		
<b>2013</b>							
January	473,167	1,861	475,028	160,150	1	635,179	349,592
February	450,973	1,794	452,767	154,317	4	607,088	330,028
March	463,445	1,761	465,206	136,203	13	601,422	321,314
April	504,608	1,732	506,340	137,122	20	643,482	354,299
May	528,465	1,743	530,208	149,688	14	679,910	375,949
June	530,844	1,764	532,608	154,809	9	687,426	362,989
July	543,986	1,816	545,803	158,064	72	703,939	385,102
August	540,160	1,824	541,984	141,909	72	683,965	378,141
September	548,918	1,842	550,760	144,535	81	695,375	374,637
October	533,552	1,864	535,416	135,915	62	671,394	366,527
November	550,239	1,892	552,131	135,697	130	687,957	364,982
December	571,969	1,888	573,861	165,976	31	739,868	389,179
<b>2014</b>							
January	574,742	1,888	576,630	164,383	140	741,153	391,527
February	574,712	1,888	576,599	144,343	139	721,086	372,889
March	580,864	1,888	582,752	140,478	214	723,443	372,437
April	594,010	1,888	595,898	158,854	97	754,849	393,505
May	577,369	1,888	579,256	152,086	229	731,571	365,290
June	758,315	1,888	760,203	161,602	249	922,054	531,389

Source: Central Bank of Kenya

\* Includes encumbered reserves

\*\*National Government includes reserve position in the Fund and deposits with Crown Agents.

<sup>^</sup> Revised

Fig 6: Foreign Exchange Reserves

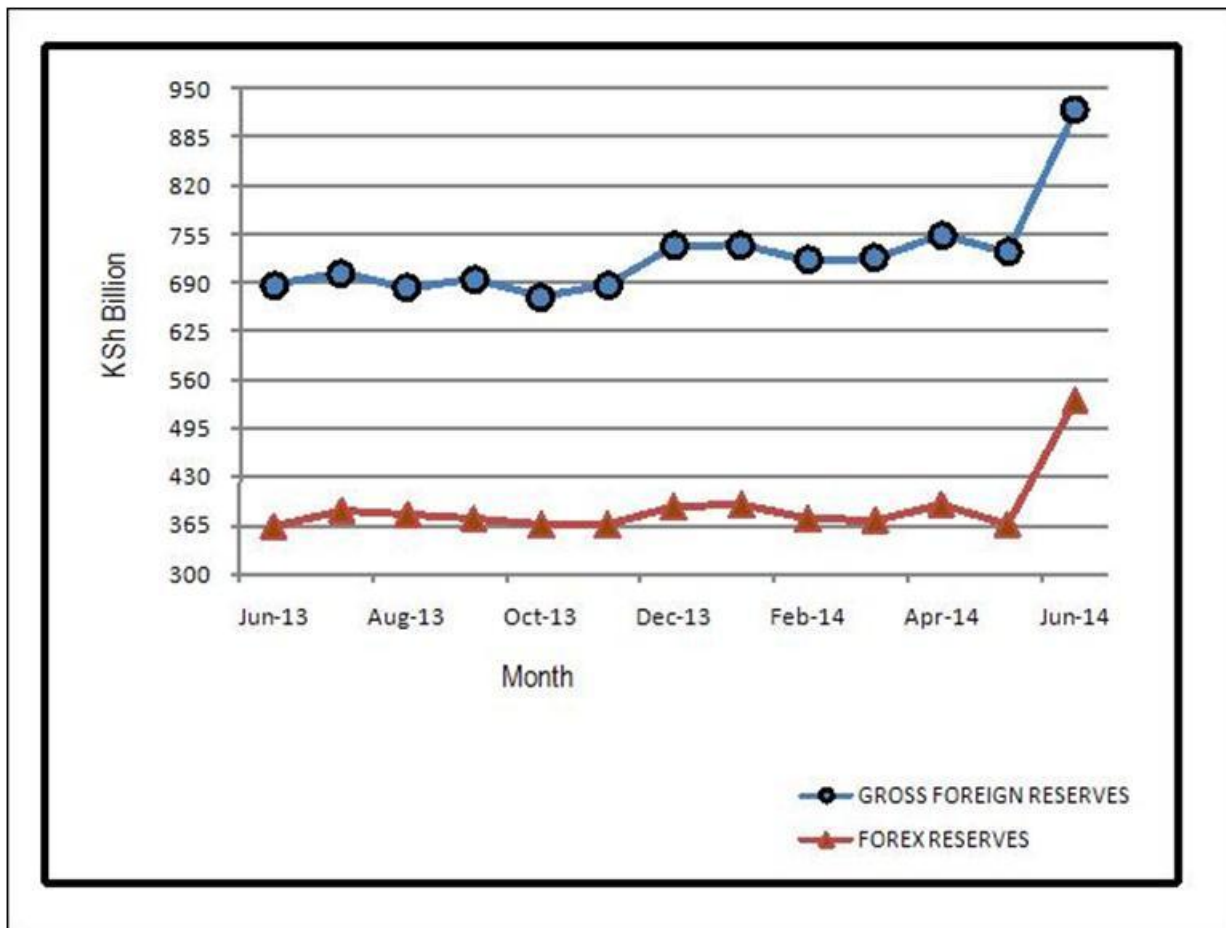


Table 6: Coffee Sales and Prices\*

Months	2012			2013			2014***		
	QUANTITY (MT)	PRICE (\$ /kg)	PRICE (Ksh /kg)	QUANTITY (MT)	PRICE (\$ /kg)	PRICE (Ksh /kg)	QUANTITY (MT)	PRICE (\$ /kg)	PRICE (Ksh /kg)
January	4,770	6.31	543.92	3,938	3.96	344.17	2,850	3.40	293.39
February	6,505	4.44	368.78	4,825	3.66	319.70	5,382	4.62	398.62
March	3,317	4.68	388.61	4,074	3.81	326.86	6,212	5.31	459.34
April	4,801	4.12	342.49	6,038	3.31	278.70	6,611	4.52	392.22
May	5,472	3.59	302.51	4,482	2.73	229.85	3,747	3.99	349.47
June	3,884	3.04	258.05	2,307	2.43	208.10	2,860	4.09	357.96
July**	3,086	3.54	297.99	830	2.89	250.59			
August	3,948	3.30	277.28	3,411	3.39	296.97			
September	4,474	3.14	265.22	2,442	3.28	286.47			
October	2,925	3.09	263.39	1,580	2.81	239.37			
November	1,794	3.17	272.27	1,882	2.97	255.55			
December	1,075	3.58	307.99	2,133	3.18	274.39			
Annual	4,095	3.83	324.04	3,162	3.20	275.89			

Source: Coffee Board of Kenya

\* Auction Price

NB: MT denotes Metric Tonnes

\*\*\* Provisional

\*\* Nairobi Coffee Exchange was in recess for most of July 2013

Fig.7: Coffee Sales at the Nairobi Coffee Exchange

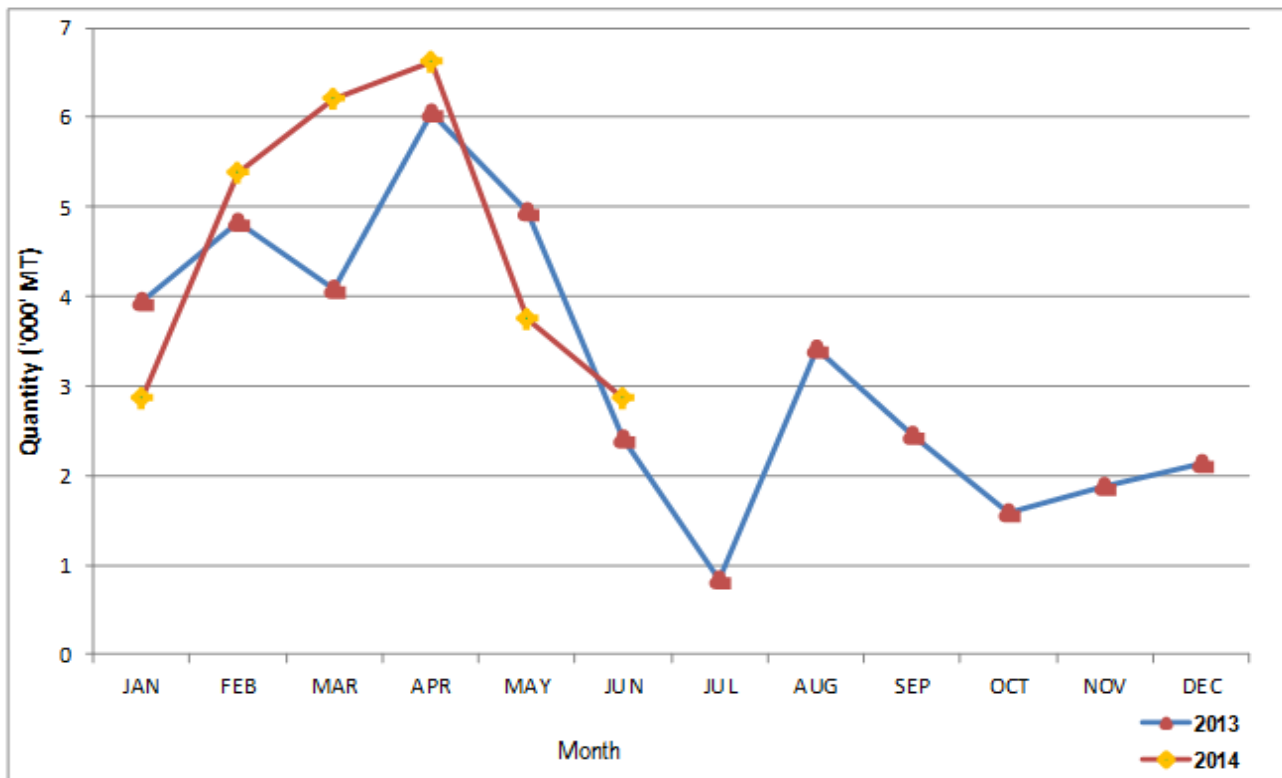


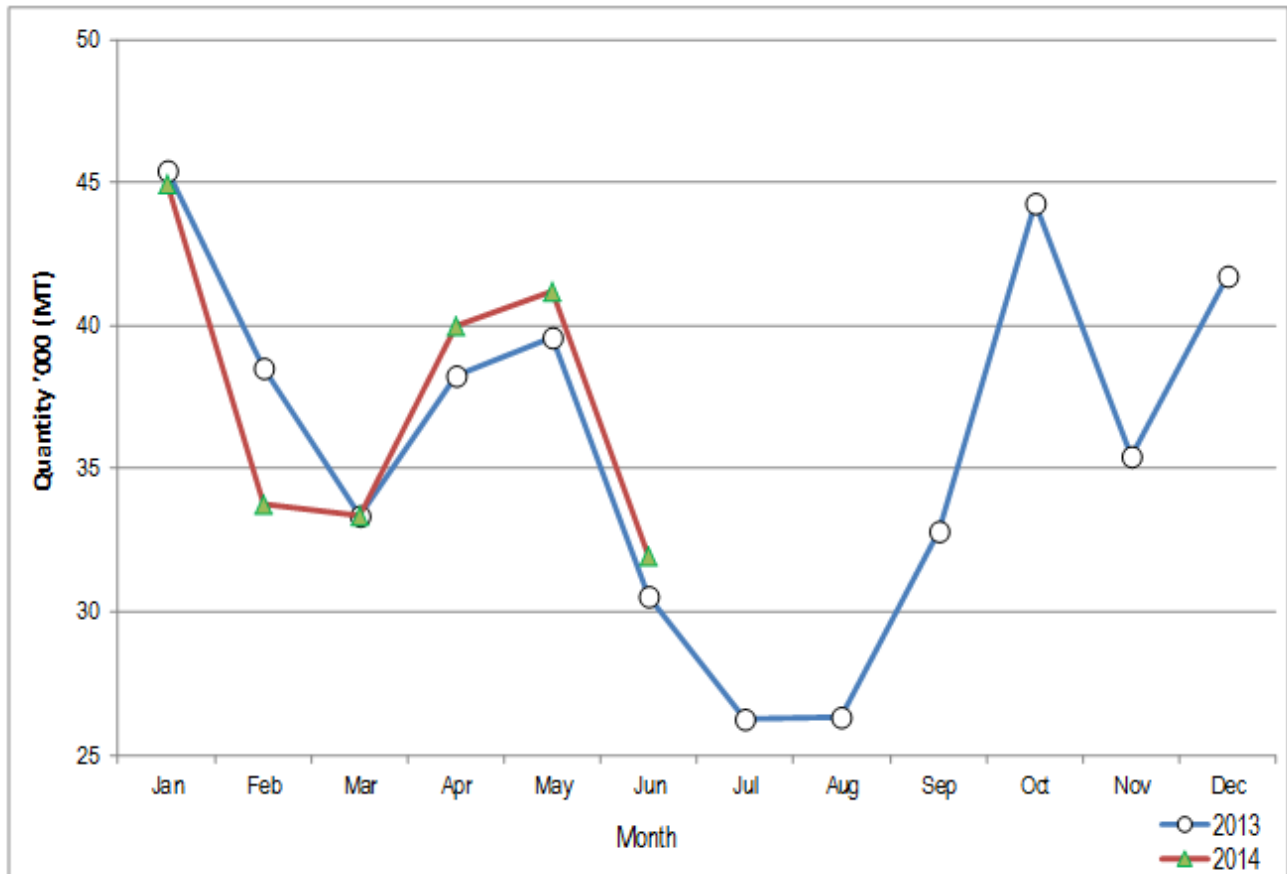
Table 7: Tea Production and Auction Prices

Months	2011			2012			2013			2014*		
	QUANTITY (MT)	PRICE (\$/Kg)	PRICE (KSh/Kg)	QUANTITY (MT)	PRICE (\$/Kg)	PRICE (KSh/Kg)	QUANTITY (MT)	PRICE (\$/Kg)	PRICE (KSh/Kg)	QUANTITY (MT)	PRICE (\$/Kg)	PRICE (KSh/Kg)
January	35,999	3.16	256.43	36,205	2.91	250.22	45,390	3.28	284.11	44,970	2.74	235.57
February	26,711	3.07	250.78	18,412	2.95	245.01	38,503	3.09	270.61	33,774	2.35	202.55
March	22,459	2.89	243.36	17,859	3.03	251.24	33,368	2.81	240.73	33,336	2.16	186.93
April	31,482	2.87	240.62	18,118	3.08	256.13	38,230	2.50	210.09	39,975	2.16	187.59
May	32,856	2.88	245.13	37,383	3.14	264.26	39,600	2.56	214.54	41,186	2.06	179.49
June	28,955	2.97	264.43	30,197	3.29	279.45	30,530	2.44	208.59	31,945	2.03	177.90
July	26,343	3.16	283.08	24,306	3.42	287.79	26,229	2.44	211.89			
August	24,471	3.18	293.85	31,920	3.42	287.71	26,338	2.38	208.13			
September	30,493	3.05	291.64	33,549	3.31	279.69	32,800	2.19	191.06			
October	39,926	2.89	290.94	40,235	3.20	272.10	44,283	2.05	174.39			
November	36,825	2.85	269.22	39,977	3.24	277.26	35,463	2.17	186.71			
December	41,393	2.86	251.09	41,401	3.27	281.47	41,719	2.45	211.62			
Annual	377,913	3.00	265.94	369,562	3.19	269.36	432,453	2.53	217.71			

Source: Tea Board of Kenya  
 MT denotes Metric Tonnes  
 \*Provisional



**Fig.8: Tea Production**



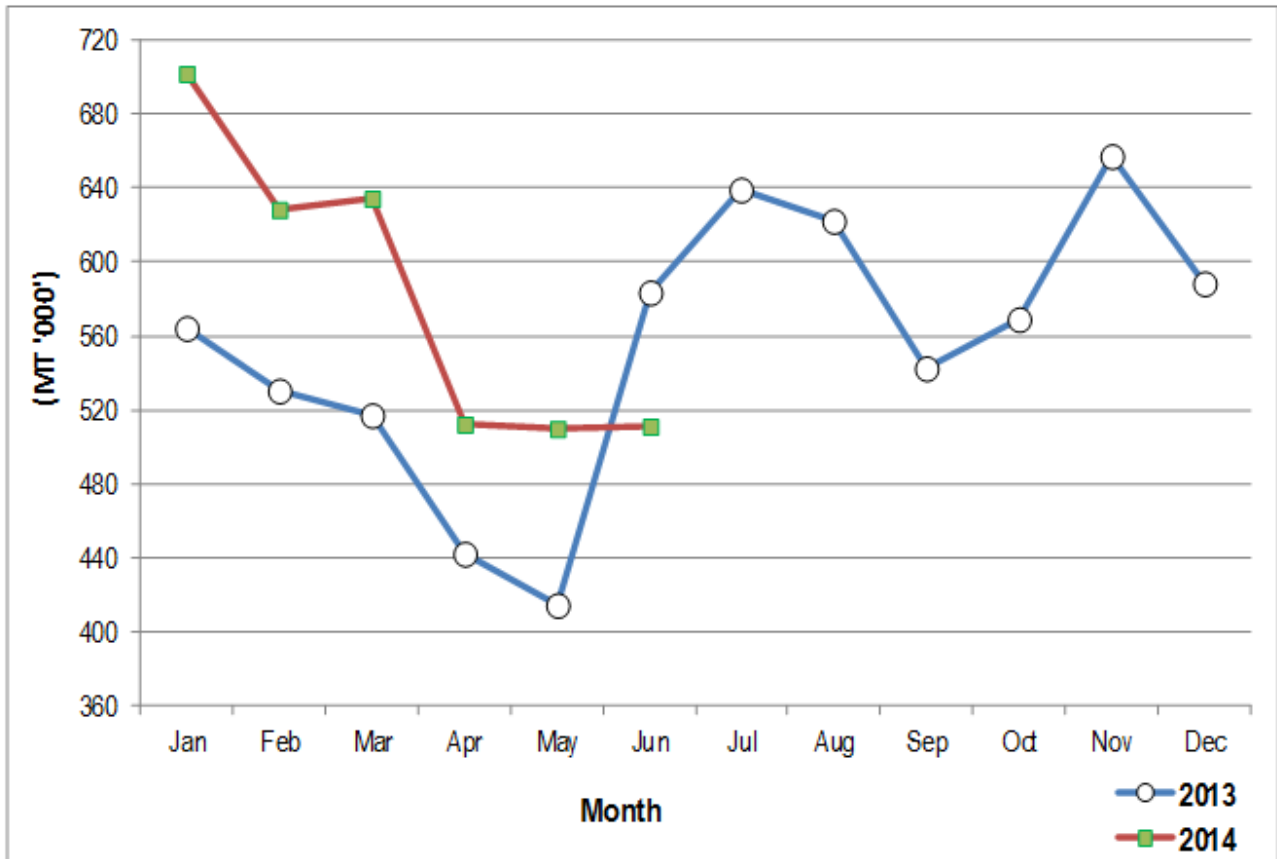
**Table 8: Cane Deliveries**

	000 Metric Tonnes			
Month	2011	2012	2013	2014*
January	540.53	601.90	564.50	701.61
February	537.61	565.90	530.00	628.56
March	582.05	605.50	516.70	634.00
April	542.74	469.30	442.70	512.23
May	490.58	369.20	414.80	510.05
June	452.20	571.40	583.40	511.01
July	301.60	438.00	639.50	
August	314.03	466.40	622.30	
September	328.10	371.90	543.10	
October	330.59	370.90	569.40	
November	415.98	432.20	657.50	
December	502.56	453.70	587.90	
<b>Total</b>	<b>5,338.56</b>	<b>5,716.30</b>	<b>6,671.70</b>	

Source: Kenya Sugar Board

\* Provisional

Fig.9: Cane Deliveries



**Table 9(a): Average Monthly Retail Prices for dry Maize, 2013 (per Kg)**

Market/Month	JAN	FEB	MAR	APR	MAY	JUNE	JULY	AUG	SEPT	OCT	NOV	DEC
KIAMBU	35.00	35.00	40.00	40.00	35.00	35.00	-	-	-	-	40.00	40.00
LIMURU	35.00	35.00	35.00	-	35.00	35.00	-	-	40.00	40.00	40.00	40.00
THIKA	39.64	37.84	36.31	36.25	38.00	-	33.75	36.25	40.00	47.00	-	-
GATUNDU	23.55	22.91	25.74	24.76	24.76	-	19.29	17.14	19.29	17.41	-	-
KUTUS	36.36	34.78	30.43	-	-	-	-	-	-	-	-	-
SAGANA	38.04	32.61	31.11	26.09	-	-	-	-	-	-	-	-
KERUGOYA	34.09	39.13	27.27	-	-	-	-	-	-	-	-	-
MUTHITHI	42.41	54.99	23.81	24.21	27.20	28.57	-	33.33	36.90	40.18	36.90	-
MUKUYU	43.26	33.33	30.16	26.19	28.57	28.57	-	33.33	33.33	35.24	38.10	38.10
KIRIAINI	34.00	40.28	38.10	36.19	33.67	31.54	-	35.83	39.17	38.00	25.83	40.00
ENGINNEER	40.00	40.00	38.75	35.00	35.00	41.50	40.00	40.00	40.00	40.00	40.00	-
NYERI	43.81	40.00	40.00	38.33	36.67	-	-	-	-	-	-	-
ENDARASHA	43.75	45.00	45.00	42.84	36.36	40.06	40.45	38.64	-	-	-	-
KARATINA	42.50	40.00	38.13	34.58	33.33	33.33	33.33	33.33	-	-	-	-
GAKINDU	45.00	40.52	38.13	40.06	46.22	58.65	53.11	35.71	-	-	-	-
NANYUKI	40.56	39.29	40.24	38.64	37.51	30.44	38.47	38.68	40.74	-	43.76	42.00
NYAHURURU	36.59	31.96	40.00	38.75	31.82	36.36	36.36	36.36	-	40.91	43.64	42.42
KALOLENI	40.00	38.50	40.00	39.00	38.00	38.00	38.00	75.63	35.00	-	-	-
MALINDI	40.00	40.00	39.94	40.00	40.50	40.00	40.00	31.25	35.00	40.00	40.00	-
KIBAUNI KILIFI	40.00	40.81	40.00	40.00	40.00	40.00	40.00	40.00	37.50	-	-	-
UKUNDA	-	-	-	40.00	40.00	-	38.00	38.00	38.00	38.00	38.00	-
KWALE	-	-	-	48.33	48.30	48.75	-	-	38.00	38.67	39.00	39.00
MWEMBE TAYARI	-	-	-	44.60	46.33	50.00	49.44	42.92	45.00	45.00	-	-
MAJENGO	-	-	-	42.75	45.00	43.75	43.00	39.50	43.25	42.40	-	-
MACKINON	-	-	-	50.00	42.00	60.00	40.00	40.00	40.00	40.00	-	-
SEGA	44.75	42.00	45.00	50.00	47.22	46.90	48.73	41.91	44.00	42.60	-	-
KONGOWEA	42.25	40.75	43.50	41.08	39.47	39.75	39.77	39.11	36.00	37.00	38.00	-
HOLA	40.00	20.00	35.00	37.50	35.00	-	-	-	50.00	30.00	36.67	38.75
GARSEN	50.00	50.00	47.00	60.00	60.00	60.00	45.00	41.67	40.00	30.00	30.00	-
BURA TANA	50.00	35.00	25.00	35.00	32.50	-	-	-	42.50	30.00	35.00	37.00
RUNYENJES	29.55	28.41	27.27	22.73	27.27	27.27	27.27	-	31.17	35.00	36.36	36.36
EMBU TOWN	31.82	27.27	27.27	27.27	-	27.27	22.73	27.27	31.82	34.55	36.36	36.36
SIKAGO	31.82	31.82	22.73	-	27.27	-	-	27.28	30.24	35.32	38.10	38.10
MWINGI	30.00	30.00	35.00	31.50	31.50	-	33.00	33.00	34.80	35.00	35.00	35.00
KALUNDU	35.00	35.00	-	30.00	30.00	-	30.00	30.00	31.75	34.50	35.00	35.67
MACHAKOS	35.91	35.61	40.11	38.54	34.48	-	35.00	35.00	-	-	-	35.00
TALA	-	-	33.00	22.35	22.51	24.00	23.81	24.00	-	-	-	29.50
MAUA	38.89	33.33	33.33	22.92	25.00	30.00	30.00	30.00	30.00	35.00	-	-
KIANJAI	35.56	26.67	27.78	27.50	27.78	27.78	25.56	25.56	33.33	37.78	-	-
GAKOROMERE	36.94	36.44	-	25.62	25.00	27.78	33.33	33.33	33.33	38.89	38.89	-
MARSABIT	-	-	-	-	37.50	50.00	-	-	-	-	42.50	-
WOTE	35.33	-	-	27.43	29.11	-	-	34.38	-	-	-	-
DARAJA MBILI	36.36	-	37.88	36.36	37.50	36.93	37.73	37.40	37.50	40.91	40.91	40.91
KIBIRIGO	33.33	33.33	33.33	39.13	-	-	-	31.25	35.42	37.91	37.50	-
NYANGUSU	-	-	35.23	-	36.82	39.39	36.36	36.93	38.64	45.45	39.20	-
RIOGHANDA	31.25	29.17	33.33	35.42	-	-	-	34.78	36.23	39.13	39.13	-
NYABITE	33.33	33.33	33.33	36.00	-	-	-	33.33	34.99	37.00	39.13	-
MIRUKA	31.52	-	31.25	-	38.18	39.77	36.74	36.36	38.64	45.45	40.34	-
IGARE	-	-	35.61	-	37.71	39.20	36.36	36.36	40.76	41.30	41.70	-
KIBUYE	35.82	35.88	38.64	39.68	35.73	34.78	33.33	32.91	34.63	34.78	-	-
AHERO	36.36	36.36	37.50	40.91	38.18	37.50	37.27	37.50	-	2.90	41.48	-
KIBOSWA	36.36	35.15	40.91	37.30	35.88	34.06	34.49	32.92	34.24	35.22	38.04	39.13
SONDU	36.36	36.36	37.50	37.50	37.73	36.36	37.27	37.50	-	2.60	42.05	40.91
BONDO	35.00	36.00	36.45	-	36.36	36.36	32.28	31.73	33.53	36.07	-	-
SIAYA	31.74	33.33	36.36	36.24	35.60	35.98	29.28	33.34	34.56	45.23	-	-
NGIYA	29.83	33.63	-	36.36	36.36	36.36	29.09	32.15	32.70	37.37	-	-
UNGUJA	31.82	31.82	36.36	36.36	37.97	40.00	29.73	30.68	33.33	34.94	-	-
HOMABAY	-	-	-	35.36	33.75	-	-	35.70	-	37.38	-	-
OYUGIS	31.82	35.23	36.93	42.05	41.17	-	36.36	33.94	39.25	43.12	43.30	-
KEHACHA	31.82	-	-	-	29.00	32.00	32.00	31.47	37.50	36.80	40.00	-
SOKO MJINGA	-	-	-	-	-	-	-	-	-	35.06	39.53	35.65
KABARNET	30.60	32.50	38.89	38.89	33.33	29.00	33.33	33.00	34.83	38.02	37.78	38.89
MUTHURWA	-	-	-	-	-	-	-	-	-	33.83	36.38	-
NAKURU	-	55.56	55.56	-	37.50	43.85	50.48	40.00	51.11	52.22	40.00	-
KAPSABET	32.61	34.78	35.87	36.96	36.96	-	-	-	-	-	-	-
KITALE	28.75	-	40.00	40.00	50.00	-	-	29.17	30.21	30.73	28.75	27.08
ELDORET	37.50	40.00	40.00	40.00	40.00	34.60	33.33	-	30.63	30.00	-	-
BURN FOREST	32.00	33.75	40.00	40.00	33.33	33.71	-	-	-	-	-	-
TURBO	25.00	25.00	31.67	36.00	31.57	30.55	-	-	30.00	30.00	-	-
KIPKAREN	-	37.50	40.00	38.00	35.86	30.00	-	-	30.00	29.00	-	-
ITEN	30.83	33.46	35.00	37.50	35.00	33.46	31.67	35.00	37.50	-	39.00	35.00
KAJIADO	50.00	50.00	50.00	50.00	50.00	-	-	40.00	41.11	50.00	50.00	-
BUNGOMA	34.78	34.78	37.50	30.61	31.25	-	35.56	28.57	35.00	-	33.33	-
KIMILILI	29.55	29.17	29.80	29.79	34.04	32.97	32.97	-	-	33.33	33.33	-
KAPSOKWONY	25.00	28.26	30.43	30.11	31.25	-	35.16	34.78	35.16	38.64	36.36	-
BUMALA	-	-	38.10	-	-	30.16	31.71	32.74	35.63	37.50	-	38.10
BUSIA TOWN	-	-	33.33	33.33	-	31.11	36.57	33.33	35.00	37.50	-	33.33
BUTERE	29.17	31.57	32.61	33.33	43.42	31.30	-	-	-	-	-	-
KAKAMEGA	35.14	37.75	42.14	37.78	37.42	33.74	35.22	36.05	37.07	36.88	35.11	33.01
MUMIAS	36.36	36.36	33.33	34.09	43.31	42.31	-	-	-	-	-	-
MUNDETA	55.28	31.65	41.27	40.48	38.10	-	-	30.95	31.55	31.90	34.52	33.33
CHEPTULA	29.59	34.03	40.60	40.48	38.10	-	-	30.95	30.95	32.74	35.48	33.33
MPALE	29.76	34.71	42.86	-	-	-	-	30.95	32.74	33.93	33.33	34.52
HARAMBEE	-	-	-	33.33	32.85	31.64	-	-	33.33	35.24	-	-
WAKULIMA	50.00	50.00	54.05	54.05	52.63	54.05	54.05	50.00	50.00	50.00	50.00	40.00
KAWANGWARE	48.89	50.00	52.38	52.38	50.00	52.38	52.38	54.55	54.55	50.00	42.86	47.50
BURMA	50.00	50.00	50.00	50.00	50.00	50.00	50.00	50.00	50.00	50.00	50.00	45.00
KIKOMBA	50.00	50.00	50.00	50.00	50.00	50.00	50.00	50.00	50.00	47.73	47.62	50.00
KANGEMI	45.45	50.00	47.62	47.62	47.62	47.62	47.62	52.63	52.63	47.73	48.89	43.64
KOROKOCHO	47.37	47.62	52.38	52.38	52.00	52.38	52.38	50.00	50.00	47.49	47.62	47.37
TOI	50.00	51.95	55.00	55.00	50.00	55.00	55.00	50.00	42.11	43.55	50.00	50.00
<b>Mean</b>	<b>36.58</b>	<b>36.92</b>	<b>38.06</b>	<b>37.17</b>	<b>37.40</b>	<b>37.71</b>	<b>36.89</b>	<b>35.50</b>	<b>35.91</b>	<b>35.60</b>	<b>38.12</b>	<b>36.88</b>

-data no available

**Table 9(b): Average Monthly Retail Prices for dry Maize, 2014 (per Kg)**

Market/ Month	JAN	FEB	MAR	APR	MAY	JUNE	JULY
KIambu	49.38	45.00	45.00	45.00	40.00	45.00	45.00
LIMURU	40.00	40.00	40.00	40.00	43.33	45.00	-
THIKA	46.25	47.50	47.14	47.78	48.75	-	-
GATUNDU	18.03	19.86	22.04	21.34	21.79	-	-
KUTUS	36.19	40.91	37.47	33.85	35.00	34.37	34.78
SAGANA	38.41	38.68	42.15	52.08	41.30	41.56	42.55
KERUGOYA	37.35	36.36	37.25	37.50	39.57	40.02	40.91
MUTHITHI	38.10	38.10	35.71	33.33	35.76	36.36	36.36
MUKUYU	38.10	38.10	38.10	39.29	38.57	40.48	-
KIRIINI	40.83	-	-	38.58	38.58	38.10	-
ENGINEER	-	45.00	45.00	40.00	40.00	40.00	-
NYERI	-	-	-	-	44.73	38.71	-
ENDARASHA	42.95	45.15	48.81	-	48.02	48.22	47.62
KARATINA	38.56	42.71	48.81	-	44.17	44.38	-
GAKINDU	38.10	38.10	38.10	-	45.00	42.50	45.00
NANYUKI	43.21	44.57	41.09	45.90	45.53	47.06	46.29
NYAHURURU	31.82	31.82	35.23	36.36	36.36	37.88	40.91
KALOLENI	39.20	40.00	40.00	-	-	-	-
UKUNDA	39.00	40.00	40.00	40.00	40.00	45.00	45.00
KWALE	40.52	44.10	43.33	42.00	39.20	38.80	45.00
MWEMBE TAYARI	57.67	57.50	45.75	47.50	48.40	50.00	51.00
MAJENGO	41.20	43.75	42.50	44.50	43.60	45.00	44.00
MACKINON	50.00	50.00	60.00	60.00	60.00	56.25	-
SEGA	45.00	42.50	45.00	44.00	45.00	-	46.25
KONGOWEA	37.60	35.75	38.00	39.50	38.80	40.50	43.75
HOLA	40.00	40.00	35.00	32.00	25.00	42.50	36.25
GARSEN	-	-	-	40.00	-	37.50	46.67
BURA TANA	-	35.00	40.00	27.50	39.17	45.00	35.00
RUNYENJES	36.36	37.66	35.96	34.32	36.36	38.64	37.50
EMBU TOWN	36.36	36.36	32.95	35.23	36.36	40.91	39.39
SIKAKAGO	38.10	38.10	38.10	36.36	36.36	40.91	40.91
MWINGI	35.00	35.00	35.00	35.00	41.50	35.75	35.00
KALUNDU	35.67	35.00	35.00	35.00	35.00	37.00	35.00
MACHAKOS TOWN	44.44	40.00	42.29	40.00	36.00	40.00	39.00
TAWA	-	-	37.00	36.50	36.13	35.33	-
TALA	36.67	37.67	32.50	-	-	35.00	35.00
CHUKA TOWN	-	-	42.93	41.86	48.00	46.48	-
KAANWA	-	-	35.00	45.03	39.05	-	-
WOTE	35.00	35.38	35.25	35.30	35.38	37.67	38.00
WAJIR TOWN	-	-	-	-	50.00	60.00	-
MARSABIT	40.00	40.00	-	-	-	46.67	50.00
DARAJA MBILI	38.89	38.18	40.10	38.39	38.64	40.34	38.41
KIBIRIGO	37.50	35.42	35.42	36.96	-	41.30	-
NYANGUSU	36.36	36.36	38.05	35.71	34.66	39.13	39.13
RIOHANDA	-	34.78	36.96	36.96	41.30	37.23	-
NYABITE	-	35.00	39.13	34.78	41.30	38.54	39.13
MOGONGA	39.09	-	37.50	35.80	39.01	45.45	45.45
IGARE	36.82	33.70	36.52	35.81	39.73	39.77	38.87
KIBUYE	38.70	38.32	36.53	36.96	37.78	38.70	36.96
AHERO	40.91	40.91	40.91	-	40.91	43.94	-
KIBOSWA	37.73	37.90	36.03	36.26	36.48	38.59	40.91
SONDU	40.91	40.91	40.91	-	40.91	42.42	-
BONDO	34.33	33.46	46.50	36.08	38.64	39.70	40.91
SIAYA	31.32	30.61	35.51	36.36	36.36	37.22	-
NGIYA	32.03	32.89	30.59	40.33	36.36	-	-
UNGUJA	31.59	31.20	32.65	35.64	31.13	46.54	36.36
HOMABAY	34.79	34.00	38.00	36.45	37.60	37.44	34.37
OYUGIS	34.67	35.09	38.13	40.22	43.28	39.35	36.96
KEHACHA	-	-	-	38.00	36.00	-	-
SOKO MJINGA	-	32.88	34.88	-	-	-	-
KABARNET	33.33	33.33	38.89	-	43.33	-	-
KIPKELION	-	-	-	-	-	-	40.91
MUTHURWA NAROK	33.60	34.00	33.50	37.25	37.38	-	40.00
NAKURU TOWN	45.56	53.33	56.25	50.00	57.00	55.00	58.00
KAPSABET	34.78	39.13	39.13	39.13	41.30	42.93	43.48
KITALE	30.00	31.25	30.73	31.25	37.50	37.50	37.50
MAKUTANO POKOT	-	32.00	32.88	36.00	39.50	-	-
ELDORET	30.00	34.00	32.00	40.50	33.31	37.50	40.00
BURN FOREST	30.00	35.00	35.00	35.63	34.50	41.88	42.75
TURBO	26.00	30.00	32.46	32.00	34.40	37.00	36.00
KIPKAREN	26.00	29.00	31.50	32.00	35.20	36.00	36.00
ITEN	35.83	38.50	39.58	40.00	45.00	50.00	50.00
KAJIADO	-	-	50.00	50.00	50.00	50.00	47.00
BUNGOMA TOWN	33.33	34.66	34.44	33.72	36.36	39.23	41.06
KIMILILI	-	-	33.84	-	37.50	37.50	39.90
KAPSOKWONY	28.00	-	29.25	32.65	35.98	38.30	37.87
BUMALA	32.74	30.95	34.13	38.10	42.86	41.27	39.05
BUSIA TOWN	32.38	32.14	34.92	38.10	40.03	41.91	35.72
BUTERE	35.23	31.35	31.13	-	-	41.25	39.48
KAKAMEGA	36.45	37.06	34.61	35.61	38.64	39.27	39.49
MUMIAS	-	31.47	31.30	-	-	42.27	38.66
MUNDETA	33.33	33.33	34.92	35.71	38.10	38.10	35.71
CHEPTULA	33.68	34.13	36.51	38.10	36.90	37.50	35.71
MBALE	35.71	35.71	33.33	34.92	33.33	36.08	33.81
WAKULIMA	50.00	40.00	45.24	48.65	50.00	44.44	45.00
KAWANGWARE	42.86	47.50	47.62	50.00	50.00	42.86	45.45
BURMA	50.00	45.00	50.00	45.00	45.00	40.00	45.00
GIKOMBA	47.62	50.00	50.00	50.00	50.63	45.00	45.45
KANGEMI	48.89	50.00	48.89	43.64	43.64	44.44	42.35
KOROKOCHO	47.62	47.37	45.00	45.00	50.00	40.91	45.45
TOI	50.00	50.00	45.00	45.45	50.00	40.00	40.91
Total	37.59	38.21	37.58	38.09	40.70	41.33	40.46

-data not available

**Table 9(c): Average Monthly Retail Prices for dry Beans, 2013 (per Kg)**

Market/Month	JAN	FEB	MAR	APR	MAY	JUNE	JULY	AUG	SEPT	OCT	NOV	DEC
KIAMBU	70.00	72.50	78.75	75.00	86.67	93.33	-	-	-	-	80.00	80.00
LIMURU	70.00	70.00	70.00	-	80.00	80.00	-	-	80.00	80.00	80.00	90.00
THIKA	70.00	69.92	75.86	74.92	79.00	-	70.00	70.00	80.00	82.00	-	-
GATUNDU	74.46	74.94	76.46	78.10	78.10	-	78.10	76.75	78.10	78.48	-	-
KUTUS	71.43	56.52	56.52	-	-	-	-	-	-	-	-	-
SAGANA	70.45	62.50	76.19	74.46	-	-	-	-	-	-	-	-
KERUGOYA	65.91	68.18	61.36	-	-	-	-	-	-	-	-	-
MUTHITHI	32.70	26.52	65.08	63.18	69.91	66.67	-	63.49	65.58	68.21	69.05	-
MUKUYU	65.26	50.72	60.87	61.96	60.87	60.87	-	65.22	64.13	64.35	65.22	65.22
KIRIAINI	52.55	54.26	60.87	60.87	61.92	67.78	-	62.32	63.04	62.61	63.77	65.22
ENGINEER	80.00	80.00	80.00	70.00	80.00	69.00	80.00	80.00	80.00	80.00	80.00	-
NYERI	81.00	88.75	90.00	76.48	84.44	-	-	-	-	-	-	-
ENDARASHA	86.67	92.50	90.00	90.00	-	-	-	-	-	-	-	-
KARATINA	74.17	75.00	72.29	80.83	100.00	100.00	100.00	100.00	-	-	-	-
GAKINDU	77.90	78.98	70.00	75.42	74.21	74.21	-	-	-	-	-	-
NANYUKI	79.40	77.78	80.92	85.28	87.58	60.18	88.40	85.87	85.77	-	82.98	85.90
NYAHURURU	71.50	55.63	-	80.00	73.98	80.30	64.77	63.64	-	68.18	71.82	68.18
KALOLENI	80.00	80.00	80.00	80.00	80.00	80.00	80.00	80.00	80.00	-	-	-
MALINDI	75.00	78.67	80.00	80.00	78.00	80.00	80.00	65.00	80.00	77.00	70.00	-
KIBAUNI KILIFI	86.00	80.00	80.00	80.00	80.00	80.00	72.80	80.00	75.00	-	-	-
UKUNDA	-	-	-	80.00	80.00	-	82.00	80.00	80.00	86.00	90.00	-
KWALE	-	-	-	68.89	71.43	80.00	-	-	82.50	80.00	80.00	80.00
MWEMBE TAYARI	-	-	-	85.50	78.27	92.40	100.00	88.33	80.00	84.00	80.00	-
MAJENGO	-	-	-	87.50	89.00	84.75	81.00	78.75	79.00	78.40	-	-
MACKINON	-	-	-	100.00	100.00	100.00	100.00	100.00	100.00	100.00	-	-
SEGA	71.25	75.00	75.00	85.00	96.54	83.71	79.33	79.09	79.00	78.40	-	-
KONGOWEA	75.75	75.00	74.50	86.54	86.33	72.17	67.77	61.11	70.00	71.40	72.00	-
HOLA	80.00	80.00	80.00	85.00	86.67	-	-	-	80.00	93.33	96.67	100.00
GARSEN	80.00	80.00	80.00	80.00	80.00	80.00	80.00	80.00	80.00	80.00	80.00	-
BURA TANA	80.00	60.00	80.00	90.00	90.00	-	-	-	90.00	93.33	100.00	100.00
RUNYENJES	54.55	45.45	45.45	54.55	50.00	59.09	59.09	-	59.74	71.82	73.23	69.48
EMBU TOWN	45.45	45.45	45.45	54.55	-	54.55	63.64	68.18	59.09	68.18	75.54	81.82
SIKAGO	38.00	38.00	34.38	-	45.24	-	-	54.24	59.90	67.21	66.01	71.74
MWINGI	50.00	50.00	60.00	70.00	68.66	-	60.00	70.00	67.78	73.87	70.00	70.00
KALUNDU	55.56	55.00	-	71.00	65.00	-	70.00	68.33	68.13	73.13	77.78	77.00
MACHAKOS	69.41	71.23	62.75	90.81	78.83	-	70.00	75.00	-	-	-	80.00
TALA	-	-	68.99	45.78	57.70	60.00	55.00	40.00	-	-	-	62.50
MAUA	60.00	55.56	44.44	54.17	50.00	50.00	50.00	50.00	50.00	60.00	-	-
KIANJAI	44.44	44.44	55.56	58.33	55.56	53.33	53.33	53.33	55.56	61.11	-	-
GAKROMERE	61.11	59.72	-	63.90	53.33	55.56	55.56	55.56	55.56	61.11	61.11	-
MARSABIT	-	-	-	-	62.00	100.00	-	-	-	-	72.50	-
WOTE	61.85	-	-	63.33	65.71	-	-	64.50	-	-	-	-
ODARAJA MBILI	50.00	-	54.67	60.00	54.71	56.00	58.40	53.09	61.33	62.40	59.71	56.00
KIBIRIGO	56.00	54.00	61.25	60.00	-	-	-	66.67	62.50	55.00	50.00	-
NYANGUSU	-	-	62.05	-	58.26	63.77	52.17	51.09	48.91	61.29	52.17	-
RIOCHANDA	58.33	66.67	52.00	54.17	-	-	-	68.75	64.73	69.25	58.33	-
NYABITE	66.67	66.67	60.00	64.00	-	-	-	68.00	62.50	55.25	58.33	-
MIRUKA	42.00	-	65.22	-	59.13	67.39	54.35	51.07	52.17	66.09	55.43	-
IGARE	-	-	60.87	-	61.38	65.22	53.91	43.48	48.75	50.62	50.64	-
KIBUYE	70.48	70.11	75.54	74.56	74.37	64.85	66.43	66.20	68.39	75.00	-	-
AHERO	76.19	76.19	76.19	76.19	76.19	76.19	80.95	80.95	-	1.20	76.19	-
KIBOSWA	72.83	71.88	76.09	74.97	74.62	66.82	70.80	69.42	69.72	76.08	70.11	75.54
SONDU	76.19	72.62	73.81	73.81	75.24	77.38	80.95	80.95	-	1.10	76.19	79.37
BONDO	77.27	77.27	77.91	74.18	74.18	95.45	81.85	79.97	79.67	80.24	-	-
SIAYA	80.00	68.18	80.95	81.77	84.61	81.08	80.87	86.56	83.00	84.13	-	-
NGIYA	66.19	63.64	-	81.82	90.91	77.27	64.98	68.52	65.44	67.61	-	-
UNGUJA	66.01	63.64	72.73	81.82	68.18	79.55	67.47	80.23	71.75	75.88	-	-
HOMABAY	-	-	-	63.01	59.24	-	-	60.90	-	77.97	-	-
OYUGIS	69.57	65.22	77.99	82.93	75.26	-	65.33	66.25	72.06	76.34	69.69	-
KEHACHA	54.55	-	-	-	54.40	60.00	53.60	78.00	70.00	68.80	68.00	-
SOKO MJINGA	-	-	-	-	-	-	-	-	-	70.99	78.09	69.04
KABARNET	65.00	62.50	88.89	73.70	88.89	66.67	72.22	68.00	66.48	75.68	88.89	88.89
MUTHURWA	-	-	-	-	-	-	-	-	-	65.60	66.50	-
NAKURU	-	79.56	73.70	-	85.00	87.15	84.76	70.00	70.00	69.00	60.00	-
KAPSABET	78.26	78.26	78.26	78.26	86.96	-	-	-	-	-	-	-
KITALE	65.91	-	69.81	69.81	80.00	-	-	53.85	56.73	58.65	60.00	60.00
ELDORET	85.00	80.00	95.00	91.73	74.55	66.15	62.50	-	32.29	72.73	-	-
BURN FOREST	80.90	80.88	81.80	88.63	90.91	88.43	-	-	-	-	-	-
TURBO	75.00	82.50	93.33	90.83	84.16	76.86	-	-	70.00	70.00	-	-
KIPKAREN	-	82.50	90.00	102.50	71.43	81.25	-	-	70.00	70.00	-	-
ITEN	73.33	75.50	83.33	88.33	94.29	90.00	81.25	73.89	75.00	-	97.00	88.75
KAJIADO	-	80.00	80.00	80.00	-	-	-	70.00	74.44	100.00	80.00	-
BUNGOMA	54.17	54.17	60.42	57.78	66.67	-	50.00	57.78	65.00	-	65.22	-
KIMILILI	48.00	60.87	54.00	54.90	62.50	53.93	53.93	-	-	52.17	56.52	-
KAPSOKWONY	48.00	54.17	56.00	54.90	58.82	-	54.55	64.37	60.87	56.52	56.52	-
BUMALA	-	-	76.19	-	-	53.43	47.45	54.11	57.14	61.90	66.67	50.00
BUSIA TOWN	-	-	71.43	76.19	-	69.06	32.81	71.94	90.91	90.91	90.91	80.95
BUTERE	60.87	67.05	65.22	83.33	70.81	56.84	-	-	-	-	-	-
KAKAMEGA	76.28	75.54	78.64	83.00	81.60	71.69	76.66	83.53	84.74	89.39	74.63	80.87
MUMIAS	63.64	69.02	66.67	63.64	60.38	56.34	-	-	-	-	-	-
MUNDETA	45.42	66.82	87.88	81.82	81.82	-	-	72.73	73.86	72.73	76.52	72.73
CHEPTULA	81.82	84.85	83.64	81.49	81.82	-	72.73	79.34	81.82	79.09	77.27	81.82
MBALE	81.82	84.85	90.91	-	-	-	-	81.82	81.82	81.82	81.82	81.82
HARAMBEE	-	-	-	60.42	67.26	55.25	-	-	-	79.85	-	-
WAKULIMA	90.00	90.00	100.00	100.00	100.00	100.00	100.00	95.24	95.24	97.62	100.00	88.89
KAWANGWARE	95.00	95.00	95.00	95.00	95.00	95.00	95.00	100.00	100.00	97.62	97.50	100.00
BURMA	100.00	100.00	100.00	100.00	100.00	100.00	100.00	100.00	100.00	100.00	100.00	100.00
KIKOMBA	90.00	95.24	100.00	100.00	100.00	100.00	100.00	95.24	95.24	95.24	95.24	95.24
KANGEMI	95.24	90.00	100.00	100.00	100.00	100.00	100.00	100.00	100.00	100.00	95.24	100.00
KOROKOCHO	90.00	95.00	95.00	95.00	90.48	95.00	95.00	90.48	90.48	90.24	90.48	95.00
TOI	100.00	90.91	100.00	100.00	100.00	100.00	100.00	95.00	95.00	95.45	100.00	100.00
Mean	68.99	70.73	74.25	75.67	75.12	74.19	71.30	70.59	71.14	70.74	73.99	77.87

-Data not available

**Table 9(d): Average Monthly Retail Prices for dry Beans, 2014 (per Kg)**

Market/Month	JAN	FEB	MAR	APR	MAY	JUNE	JULY
KIAMBU	80.00	80.00	80.00	80.00	80.00	80.00	80.00
LIMURU	80.00	80.00	80.00	80.00	80.00	80.00	-
THIKA	84.00	82.50	82.50	80.00	80.00	-	-
GATUNDU	79.29	77.38	76.13	77.66	89.20	-	-
KUTUS	83.21	75.65	70.83	68.92	69.32	70.68	71.59
SAGANA	71.74	74.19	73.34	76.04	79.13	67.87	73.58
KERUGOYA	70.62	71.15	73.02	71.94	69.57	68.88	69.57
MUTHITHI	63.10	71.43	71.43	62.50	67.05	63.64	63.64
MUKUYU	65.22	65.22	61.41	65.22	65.22	65.22	-
KIRIAINI	65.22	-	-	71.94	70.80	68.18	-
ENGINEER	-	80.00	80.00	90.00	90.00	90.00	-
NYERI	-	-	-	-	87.14	83.09	-
ENDARASHA	74.29	76.52	76.19	-	92.92	93.87	76.19
KARATINA	69.68	74.13	77.38	-	82.78	86.96	-
GAKINDU	78.57	77.98	76.19	-	80.95	80.16	80.95
NANYUKI	83.14	87.26	77.96	88.89	89.39	92.36	93.61
NYAHURURU	75.45	77.27	78.41	81.82	81.82	78.79	80.30
KALOLENI	80.00	80.00	80.00	-	-	-	-
UKUNDA	92.50	95.00	80.00	75.00	75.00	85.00	73.75
KWALE	65.00	86.25	90.00	83.33	85.00	88.00	73.75
MWEMBE TAYARI	80.00	80.00	100.00	96.25	98.00	107.50	100.00
MAJENGO	80.00	81.00	85.00	83.00	88.00	90.00	88.00
MACKINON	100.00	100.00	85.00	90.00	90.00	95.00	-
SEGA	96.00	78.75	83.33	85.00	95.00	91.25	88.75
KONGOWEA	74.40	72.25	76.33	78.75	80.00	86.25	91.25
HOLA	85.00	80.00	90.00	86.00	95.00	92.50	92.50
GARSEN	-	-	-	80.00	-	90.00	90.00
BURA TANA	-	97.50	92.50	90.00	83.85	85.00	97.50
RUNYENJES	65.15	56.43	62.82	72.78	64.37	58.33	54.86
EMBU TOWN	70.45	61.59	65.96	67.21	64.43	58.33	62.50
SIKAGO	59.78	56.52	63.89	65.94	73.91	50.00	52.58
MWINGI	75.00	80.00	77.50	79.17	30.56	75.71	77.41
KALUNDU	74.00	74.00	71.88	75.00	83.33	80.00	81.25
MACHAKOS TOWN	93.33	70.00	74.44	70.00	76.00	80.00	77.00
TAWA	-	-	76.88	76.88	78.75	72.50	-
TALA	70.83	54.17	59.00	-	-	70.00	63.75
CHUKA TOWN	-	-	92.89	81.82	88.00	78.56	-
KAANWA	-	-	65.00	63.86	60.00	-	-
WOTE	75.00	66.25	73.75	78.00	77.00	75.00	77.50
WAJIR TOWN	-	-	-	-	80.00	80.00	-
MARSABIT	100.00	94.00	-	-	-	67.50	73.30
DARAJA MBILI	61.33	64.00	66.47	69.93	76.80	70.50	55.20
KIBIRIGO	60.00	68.00	75.00	70.83	-	85.33	-
NYANGUSU	62.61	61.96	61.49	65.22	61.38	59.16	70.83
RIOCHANDA	-	68.75	73.91	75.00	86.96	76.00	-
NYABITE	-	62.50	62.50	78.26	91.67	87.48	75.00
MOGONGA	65.22	-	65.22	65.22	65.22	65.22	82.61
IGARE	55.87	58.00	59.56	54.63	65.18	72.37	77.36
KIBUYE	65.85	69.21	64.76	66.67	72.49	66.60	60.00
AHERO	79.05	76.19	85.71	-	85.71	92.06	-
KIBOSWA	66.47	69.70	69.50	67.71	74.86	70.00	58.33
SONDU	71.43	73.81	80.95	-	83.33	88.89	-
BONDO	89.78	81.22	59.77	102.66	111.37	98.36	87.82
SIAYA	82.84	82.62	85.80	80.28	86.37	86.25	-
NGIYA	67.49	84.93	82.76	81.28	79.55	-	-
UNGUJA	77.30	74.06	75.95	76.00	78.41	85.87	68.18
HOMABAY	70.18	78.97	74.25	85.29	74.30	80.34	65.38
OYUGIS	63.49	73.89	75.35	76.92	66.62	58.66	61.67
KEHACHA	-	-	-	66.50	76.00	-	-
SOKO MJINGA	-	79.53	89.15	-	-	-	-
KABARNET	77.78	88.89	88.89	-	100.00	-	-
KIPKELION	-	-	-	-	-	-	61.55
MUTHURWA NAROK	67.20	71.00	71.00	70.00	71.20	-	80.00
NAKURU TOWN	84.44	100.00	100.00	110.00	110.00	97.50	100.00
KAPSABET	86.96	86.96	78.26	86.96	86.96	74.46	89.13
KITALE	59.23	62.31	68.27	75.00	73.08	65.38	58.46
MAKUTANO POKOT	-	67.31	75.24	79.81	84.62	-	-
ELDORET	66.00	65.17	90.91	96.02	65.34	64.39	72.73
BURN FOREST	81.82	90.91	81.82	90.91	90.91	88.64	81.82
TURBO	80.00	90.00	85.06	87.12	96.36	100.00	95.00
KIPKAREN	85.00	85.00	86.13	86.05	95.45	100.00	95.00
ITEN	88.33	83.75	85.00	92.00	100.00	100.00	100.00
KAJIADO	-	-	85.00	100.00	82.22	80.00	80.00
BUNGOMA TOWN	65.93	62.39	86.72	76.16	82.61	68.52	66.70
KIMILILI	-	-	68.84	-	125.27	67.37	61.10
KAPSOKWONY	57.14	-	59.36	64.65	65.75	69.14	62.79
BUMALA	55.95	66.67	71.03	88.10	95.24	77.78	60.95
BUSIA TOWN	85.00	90.00	96.67	96.67	95.95	100.00	78.00
BUTERE	78.69	66.94	64.10	-	-	59.69	53.87
KAKAMEGA	87.23	88.25	89.61	89.12	87.88	77.46	74.16
MUMIAS	-	64.44	68.14	-	-	64.01	54.93
MUNDETA	77.27	81.82	81.82	81.82	86.36	81.82	72.73
CHEPTULA	79.95	80.30	81.82	81.82	81.82	72.73	72.73
MBALE	81.82	81.82	90.91	84.85	90.91	81.82	72.73
WAKULIMA	100.00	88.89	90.48	95.00	100.00	86.36	90.91
KAWANGWARE	97.50	100.00	100.00	95.24	95.24	85.71	95.24
BURMA	100.00	100.00	100.00	100.00	100.00	95.00	100.00
GIKOMBA	95.24	95.24	100.00	94.12	95.24	90.91	85.71
KANGEMI	95.24	100.00	95.24	100.00	100.00	86.96	90.91
KOROKOCHO	90.48	95.00	80.00	80.00	95.00	90.48	86.36
TOI	100.00	100.00	95.00	97.50	97.50	90.91	92.86
<b>Total</b>	<b>74.85</b>	<b>77.15</b>	<b>76.92</b>	<b>78.84</b>	<b>79.48</b>	<b>79.55</b>	<b>75.16</b>

Data not available

**Table 10: Exports of Coffee and Tea**

Month	Coffee*		Tea	
	Quantity	Value	Quantity	Value
	(MT)	(KSh Million)	(MT)	(KSh Million)
<b>2013</b>				
January	3,093.7	1,453.7	35,381.6	9,122.8
February	3,668.0	1,937.4	37,656.2	9,414.5
March	5,068.9	2,550.4	31,280.3	7,804.2
April	3,986.1	1,361.5	33,661.5	8,011.9
May	5,163.8	1,789.8	40,935.5	9,462.9
June	5,237.7	1,778.3	37,782.7	8,515.1
July	4,652.1	1,555.8	43,760.8	9,911.0
August	4,740.8	1,409.0	36,175.1	8,236.4
September	4,802.3	1,436.1	34,082.3	7,635.4
October	3,899.2	1,302.9	33,531.7	6,977.0
November	3,808.2	1,153.1	40,054.4	7,834.3
December	2,675.0	862.3	38,740.7	7,991.4
<b>2014</b>				
January	3,168.9	1,054.8	38,651.9	8,784.3
February	3,077.9	1,117.6	33,514.1	7,316.6
March	4,583.6	1,533.2	37,642.4	7,937.6
April	4,858.3	2,013.3	37,439.0	7,781.7
May	4,593.6	2,024.2	36,215.5	7,380.0
June	4,587.4	2,006.8	39,010.7	7,692.3
July	5,424.5	2,383.4	42,393.4	8,468.0

Source: Kenya Revenue Authority  
 MT denotes Metric Tonnes  
 \*Unroasted Coffee

**Table 11: Monthly Exports of Fresh Horticultural Produce**

Months	Cut Flowers				Fruits				Vegetables			
	2013		2014*		2013		2014*		2013		2014*	
	Quantity (MT)	Value (KSh Million)	Quantity (MT)	Value (KSh Million)	Quantity (MT)	Value (KSh Million)	Quantity (MT)	Value (KSh Million)	Quantity (MT)	Value (KSh Million)	Quantity (MT)	Value (KSh Million)
January	9,485.35	6,767.17	8,985.36	6,094.22	1,534.62	229.46	3,037.65	435.92	7,377.74	2,074.65	6,471.30	1,845.60
February	11,108.66	7,275.06	11,514.30	6,062.50	2,367.21	293.10	3,429.73	403.92	8,099.70	1,630.39	4,696.21	1,262.90
March	10,610.98	4,830.12	10,669.29	7,884.11	3,858.70	406.09	2,725.43	377.43	5,344.51	1,824.87	5,438.82	1,479.17
April	8,648.77	3,076.23	10,820.30	4,442.36	4,780.72	483.41	3,482.80	574.13	6,363.77	1,669.46	6,263.91	1,618.92
May	9,470.87	4,107.84	10,768.70	5,560.50	2,473.41	340.10	3,056.60	324.40	5,190.76	1,476.29	6,032.00	1,648.10
June	6,853.26	4,284.81	9,055.50	4,548.80	2,095.45	380.97	3,092.40	399.50	6,232.14	2,329.81	5,832.10	1,546.50
July	7,030.40	3,083.21	8,315.30	4,048.10	3,049.39	446.62	3,952.00	581.30	5,113.57	1,440.68	4,846.50	1,508.40
August	6,592.11	4,085.44			2,647.15	398.67			5,766.10	1,820.18		
September	6,592.11	3,017.82			1,712.31	219.85			7,512.30	1,798.50		
October	10,019.80	6,068.16			2,181.23	445.13			8,090.70	2,604.61		
November	9,104.86	4,327.86			1,922.28	403.15			6,662.14	2,559.40		
December	8,261.52	5,051.94			2,485.00	435.97			5,418.88	1,694.47		
<b>Total</b>	<b>103,778.69</b>	<b>55,975.66</b>			<b>31,107.47</b>	<b>4,482.52</b>			<b>77,172.31</b>	<b>22,923.31</b>		

\* Provisional

Source: Horticultural Crops Development Authority (HCDA)



**Table 12: External Trade**

KSh Million						
Month	Domestic Exports	Re-Exports	Total Exports	Total Imports	Volume of Trade	Home use Imports
<b>2013</b>						
January	42,970.51	4,145.81	47,116.32	130,764.52	177,880.84	124,262.61
February	43,145.97	3,555.70	46,701.68	116,417.60	163,119.28	112,271.19
March	35,793.32	2,361.82	38,155.14	108,816.01	146,971.15	96,116.85
April	38,774.88	3,812.96	42,587.84	118,664.19	161,252.03	116,158.86
May	39,824.58	3,776.54	43,601.12	113,701.52	157,302.64	107,711.47
June	35,870.76	2,773.40	38,644.17	97,060.75	135,704.92	99,835.02
July	39,455.24	2,071.27	41,526.51	124,207.24	165,733.74	124,592.67
August	36,006.07	4,804.52	40,810.59	119,643.75	160,454.34	117,980.47
September	36,220.53	5,079.99	41,300.52	112,317.66	153,618.18	107,868.56
October	36,428.49	2,818.17	39,246.66	132,206.44	171,453.10	123,968.23
November	37,360.04	6,941.18	44,301.22	116,025.12	160,326.34	115,388.89
December	35,851.93	4,456.35	40,308.27	118,982.26	159,290.53	111,026.80
<b>2014</b>						
January	37,962.47	5,100.00	43,062.47	130,116.45	173,178.92	116,475.34
February	36,431.59	6,216.24	42,647.83	107,072.27	149,720.10	101,953.85
March	41,012.40	7,820.41	48,832.81	107,990.37	156,823.18	101,320.05
April	38,746.16	10,249.25	48,995.41	139,284.61	188,280.02	127,408.20
May	38,872.75	8,993.26	47,866.02	150,477.64	198,343.66	139,450.51
June	37,853.69	6,306.60	44,160.29	113,690.24	157,850.54	109,262.71
July	34,910.79	8,090.28	43,001.07	148,739.56	191,740.63	139,872.68

**Table 13(a): Major Destinations of Domestic Exports**

	KSh Million										
Month/Country	Uganda	Tanzania	United Kingdom	Pakistan	Netherlands	Egypt	Germany	Rwanda	USA	United Arab Emirates	France
<b>2013</b>											
January	4,606.78	3,529.79	3,918.56	3,096.35	2,936.47	2,228.41	693.56	1,017.58	2,058.66	2,894.73	461.08
February	5,108.34	2,940.55	3,805.80	3,339.21	3,347.65	5,445.70	764.28	991.58	2,398.91	2,175.43	432.93
March	3,832.02	2,469.33	2,806.35	1,790.91	3,055.46	1,462.54	755.93	762.68	2,142.62	1,868.65	386.08
April	5,567.81	2,872.64	2,820.73	1,372.92	2,745.30	1,600.56	644.03	987.91	2,587.32	2,220.42	615.86
May	4,274.13	2,747.92	2,953.83	1,543.86	2,844.98	1,563.92	898.80	1,184.13	2,359.94	2,548.97	350.14
June	3,588.14	2,817.18	3,111.03	1,929.76	2,098.85	1,261.69	807.85	1,076.52	2,570.94	1,405.52	327.88
July	4,607.80	3,395.10	2,887.23	2,561.23	2,737.28	920.36	537.77	1,014.84	2,837.03	1,143.10	348.75
August	4,215.82	3,142.65	2,710.75	1,391.22	1,653.65	1,463.83	512.44	1,211.48	3,182.58	1,190.95	521.57
September	4,099.83	3,263.58	2,812.62	1,260.56	2,150.41	1,002.02	579.78	911.52	2,495.02	1,108.59	611.06
October	4,418.83	3,204.22	3,214.73	1,248.66	2,948.86	942.83	637.73	784.41	2,590.05	903.96	585.97
November	4,546.31	3,192.32	3,010.60	2,015.70	2,854.48	1,377.74	738.35	1,052.40	2,419.00	1,094.19	341.88
December	3,932.29	2,291.73	3,071.41	2,440.39	2,942.15	1,756.51	664.17	924.25	1,984.49	1,145.14	380.85
<b>2014</b>											
January	4,152.25	2,874.63	3,266.40	2,066.94	3,818.54	1,549.11	886.29	1,021.80	2,416.41	1,230.92	428.17
February	3,739.75	2,809.96	2,896.55	1,358.96	3,805.55	1,263.15	869.81	990.23	2,613.13	1,036.85	406.07
March	4,478.98	2,858.12	3,259.88	1,317.21	4,139.32	1,781.78	1,092.62	1,125.02	2,856.28	1,191.57	481.28
April	3,847.90	2,823.81	2,857.25	1,711.27	3,131.77	1,170.54	853.49	949.86	3,192.30	1,022.67	489.36
May	3,579.49	3,231.67	2,807.28	1,757.64	3,403.92	1,637.87	1,107.78	773.20	3,603.55	991.99	551.97
June	2,507.69	2,775.23	3,149.45	1,714.66	3,372.45	1,909.39	965.24	712.26	3,696.68	752.61	422.96
July	193.19	3,382.54	3,192.54	2,245.10	2,618.43	1,448.18	1,085.74	27.21	3,639.21	1,405.47	535.74

Source: Kenya Revenue Authority

**Table 13 (b): Domestic Exports by Broad Economic Category**

Descriptions	2013								2014							Value (KSh Million)
	May	June	July	August	Sep	Oct	Nov	Dec	Jan	Feb	Mar	April	May	June	July	
Food and beverages	17,478.71	16,326.01	17,466.90	15,618.49	15,004.14	14,918.16	15,714.98	14,907.77	16,339.49	14,137.49	15,634.86	16,002.42	15,758.65	15,571.66	16,668.05	
Industrial supplies (Non-Food)	10,707.00	9,531.71	10,934.12	10,068.99	10,023.73	9,620.69	9,929.45	9,568.51	9,825.91	10,441.57	11,608.79	10,227.16	9,869.70	10,475.86	7,521.28	
Fuel and Lubricants	89.19	123.02	181.17	54.31	29.65	43.20	30.62	26.64	52.89	15.25	23.33	617.65	21.16	35.47	23.27	
Machinery & other capital Equipment	1,022.12	737.50	911.00	705.02	719.00	518.65	880.35	448.00	468.52	616.15	569.75	489.48	626.20	535.70	563.46	
Transport equipment	739.28	713.70	923.83	614.86	607.77	789.13	752.77	454.46	552.57	547.95	609.33	732.62	796.86	611.07	559.72	
Consumer goods Not elsewhere specified	9,614.96	8,351.05	8,859.70	8,830.17	9,732.52	10,423.22	9,898.04	10,335.87	10,603.96	10,590.35	12,428.67	10,582.92	11,664.27	10,546.23	9,517.22	
Goods not elsewhere specified	173.32	87.78	178.53	114.23	103.73	115.44	153.82	110.68	119.12	82.83	137.67	93.91	135.91	77.70	57.79	
<b>Total</b>	<b>39,824.58</b>	<b>35,870.76</b>	<b>39,455.24</b>	<b>36,006.07</b>	<b>36,220.53</b>	<b>36,428.49</b>	<b>37,360.04</b>	<b>35,851.93</b>	<b>37,962.47</b>	<b>36,431.59</b>	<b>41,012.40</b>	<b>38,746.16</b>	<b>38,872.75</b>	<b>37,853.69</b>	<b>34,910.79</b>	
Percentage Shares:																
Food and Beverages	43.89	45.51	44.27	43.38	41.42	40.95	42.06	41.58	43.04	38.81	38.12	41.30	40.54	41.14	47.74	
Industrial Supplies (Non-Food)	26.89	26.57	27.71	27.96	27.67	26.41	26.58	26.69	25.88	28.66	28.31	26.40	25.39	27.67	21.54	
Fuel and Lubricants	0.22	0.34	0.46	0.15	0.08	0.12	0.08	0.07	0.14	0.04	0.06	1.59	0.05	0.09	0.07	
Machinery and other Capital Equipment...	2.57	2.06	2.31	1.96	1.99	1.42	2.36	1.25	1.23	1.69	1.39	1.26	1.61	1.42	1.61	
Transport Equipment	1.56	1.99	2.34	1.71	1.68	2.17	2.01	1.27	1.46	1.50	1.49	1.89	2.05	1.61	1.60	
Consumer Goods not elsewhere specified	24.14	23.26	22.46	24.52	26.87	28.61	26.49	28.83	27.93	29.07	30.30	27.31	30.01	27.86	27.26	
Goods not elsewhere specified	0.44	0.24	0.45	0.32	0.29	0.32	0.41	0.31	0.31	0.23	0.34	0.24	0.35	0.21	0.17	
<b>TOTAL</b>	<b>100</b>	<b>100</b>	<b>100</b>	<b>100</b>	<b>100</b>	<b>100</b>	<b>100</b>	<b>100</b>	<b>100</b>	<b>100</b>	<b>100</b>	<b>100</b>	<b>100</b>	<b>100</b>	<b>100</b>	

Source: Kenya Revenue Authority (KRA)

**Table 14(a): Major Origins of Imports**

Month	Value (KSh Million)										
	United Arab Emirates	United Kingdom	South Africa	Saudi Arabia	Japan	India	USA	Germany	Netherlands	France	China
<b>2013</b>											
January	10,767.76	5,010.76	4,190.54	1,885.14	6,285.92	25,159.03	6,271.76	2,730.28	1,729.33	2,176.70	14,194.34
February	11,653.70	4,501.79	4,865.26	4,953.46	4,570.04	21,510.52	4,881.18	1,932.34	1,056.56	1,720.08	17,035.64
March	19,509.20	3,037.99	5,685.81	3,690.74	6,126.40	8,757.10	4,064.41	2,905.45	731.93	1,110.44	10,298.67
April	12,936.02	4,765.68	5,731.00	5,529.01	7,462.37	15,681.50	5,223.43	4,274.24	3,437.82	1,272.85	11,376.59
May	19,605.34	4,584.10	5,364.68	3,727.80	6,288.81	15,881.65	4,504.88	3,253.74	1,211.77	1,759.40	13,344.32
June	3,257.43	3,710.63	5,373.52	1,358.08	7,116.23	24,197.49	4,508.84	2,722.81	1,206.51	991.70	11,848.67
July	6,786.52	4,107.45	6,279.58	1,604.53	6,928.27	17,666.00	5,972.54	3,874.62	3,414.14	1,624.37	17,492.68
August	8,778.06	3,625.21	9,851.64	6,184.94	9,054.01	15,268.00	4,637.04	3,162.87	4,784.01	1,324.97	19,280.71
September	3,152.23	4,140.96	4,583.65	2,769.16	6,111.86	31,023.87	4,866.33	3,074.44	1,307.47	1,571.90	14,603.34
October	6,431.59	4,053.72	6,642.79	2,352.12	7,906.70	34,137.61	4,737.24	3,633.72	989.56	2,788.86	17,624.33
November	8,869.44	4,285.57	5,665.65	3,132.64	7,506.14	14,758.49	3,832.43	2,578.07	2,729.39	2,237.77	18,596.06
December	5,603.10	3,193.31	6,427.26	4,235.25	7,940.64	32,594.35	3,893.62	3,344.75	2,157.32	2,076.63	16,583.85
<b>2014</b>											
January	8,299.99	6,035.12	6,124.96	4,253.05	9,350.34	16,962.45	5,258.10	3,985.09	1,328.88	2,032.99	15,059.01
February	7,351.15	3,427.92	5,354.54	5,525.38	4,266.24	19,390.19	4,301.35	3,326.57	1,311.61	1,325.37	14,177.95
March	8,429.55	3,291.02	6,634.62	3,982.16	7,646.90	16,431.98	3,842.78	2,825.74	1,687.12	1,587.72	18,475.89
April	10,817.69	4,243.87	6,950.55	2,730.16	6,380.86	31,810.51	13,062.48	7,095.51	1,146.85	1,536.71	15,964.53
May	10,898.91	3,435.13	3,324.64	2,683.39	6,929.83	26,413.74	21,223.57	4,238.94	1,359.53	1,647.54	21,162.14
June	5,733.46	3,262.84	4,466.75	2,040.40	6,794.50	18,895.60	3,863.08	3,434.64	1,546.69	1,313.95	15,149.33
July	10,344.54	4,153.63	4,527.48	7,002.95	7,402.95	25,362.94	30,588.39	3,322.42	987.40	1,475.12	17,736.92

Source: Kenya Revenue Authority

**Table 14 (b): Imports by Broad Economic Category**

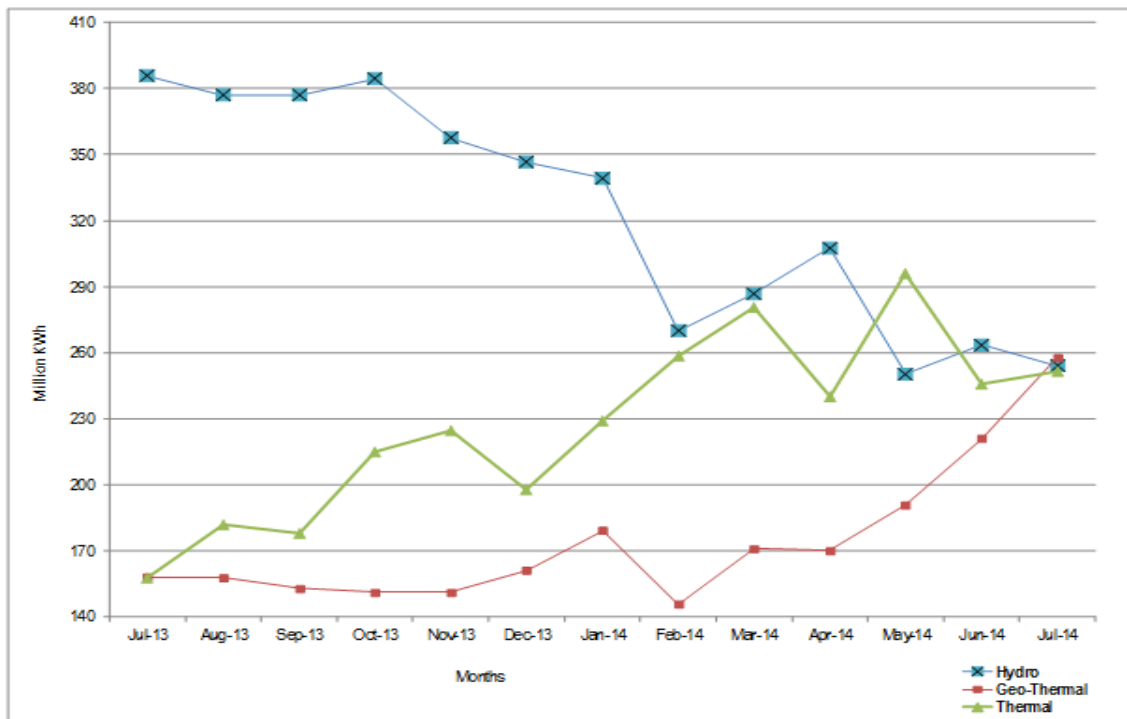
	Value (KSh Million)															
	2013									2014						
	April	May	June	July	August	Sep	Oct	Nov	Dec	Jan	Feb	Mar	April	May	June	July
Food and beverages	9,391.26	8,250.16	8,822.00	8,168.00	8,265.00	9,651.00	7,598.40	8,505.10	7,964.00	8,078.00	9,460.00	6,950.06	8,186.77	8,903.07	10,720.58	8,005.31
industrial supplies (non-food)	33,920.28	33,967.96	30,748.00	38,414.00	38,890.00	38,244.00	44,798.45	35,146.67	39,874.00	42,490.00	34,700.00	32,715.36	40,226.87	37,762.04	34,975.80	39,082.65
Fuel and lubricants	27,774.79	29,775.24	18,489.00	23,582.00	25,388.00	22,343.00	32,106.74	25,377.54	27,484.00	29,835.00	23,582.00	26,860.82	33,428.37	38,001.90	27,476.53	29,066.77
machinery & other capital equipment	19,513.56	20,836.68	18,689.00	26,320.00	23,346.00	20,717.00	25,091.65	20,923.30	19,208.00	24,068.00	19,034.00	21,079.71	24,705.21	22,491.95	17,534.25	22,186.55
transport equipment	18,478.08	11,152.43	12,465.00	15,928.00	12,817.00	11,935.00	11,359.29	12,352.15	13,727.00	13,683.00	9,383.00	10,613.27	21,556.71	29,497.10	12,098.58	37,734.74
consumer goods not elsewhere specified	7,357.43	7,610.19	7,570.00	9,297.00	7,009.00	7,763.00	9,780.79	8,977.42	9,262.00	9,233.00	9,398.00	7,390.78	9,206.18	9,381.80	9,449.12	10,850.52
Goods not elsewhere specified	2,228.79	2,108.86	277.6	2,498.00	3,929.00	1,666.00	1,471.12	4,742.93	1,463.00	2,729.00	1,516.00	2,380.36	1,974.51	4,439.78	1,435.40	1,813.02
<b>Total</b>	<b>118,664.19</b>	<b>113,701.52</b>	<b>97,061.00</b>	<b>124,207.00</b>	<b>119,644.00</b>	<b>112,318.00</b>	<b>132,206.00</b>	<b>116,025.00</b>	<b>118,982.00</b>	<b>130,116.00</b>	<b>107,072.00</b>	<b>107,990.37</b>	<b>139,284.61</b>	<b>150,477.64</b>	<b>113,690.24</b>	<b>148,739.56</b>
<b>Percentage shares:</b>																
Food and beverages	7.91	7.26	9.09	6.58	6.91	8.59	5.75	7.33	6.69	6.21	8.83	6.44	5.88	5.92	9.43	5.38
Industrial supplies (non-food)	28.59	29.87	31.68	30.93	32.5	34.05	33.89	30.29	33.51	32.66	32.41	30.29	28.88	25.09	30.76	26.28
Fuel and lubricants	23.41	26.19	19.05	18.99	21.22	19.89	24.29	21.87	23.1	22.93	22.02	24.87	24	25.25	24.17	19.54
Machinery and other capital equipment...	16.44	18.33	19.26	21.19	19.51	18.44	18.98	18.03	16.14	18.5	17.78	19.52	17.74	14.95	15.42	14.92
Transport equipment	15.57	9.81	12.84	12.82	10.71	10.63	8.59	10.65	11.54	10.52	8.76	9.83	15.48	19.6	10.64	25.37
Consumer goods not elsewhere specified	6.2	6.69	7.8	7.49	5.86	6.91	7.4	7.74	7.78	7.1	8.78	6.84	6.61	6.23	8.31	7.29
Goods not elsewhere specified	1.88	1.85	0.29	2.01	3.28	1.48	1.11	4.09	1.23	2.1	1.42	2.2	1.42	2.95	1.26	1.22
<b>TOTAL</b>	<b>100</b>	<b>100</b>	<b>100</b>	<b>100</b>	<b>100</b>	<b>100</b>	<b>100</b>	<b>100</b>	<b>100</b>	<b>100</b>	<b>100</b>	<b>100</b>	<b>100</b>	<b>100</b>	<b>100</b>	<b>100</b>

**Table 15(a): Local Electricity Generation by Source**

Month	Hydro	Geo - Thermal	Thermal	Total
<b>2013</b>				
January	377.24	129.45	168.67	675.36
February	332.99	113.11	160.26	606.36
March	347.60	134.93	162.56	645.08
April	345.05	151.90	139.85	636.80
May	376.96	158.56	132.96	668.48
June	378.41	162.04	130.79	671.24
July	385.86	157.34	157.34	700.96
August	376.91	157.52	181.74	716.17
September	263.41	152.74	177.94	707.63
October	384.52	151.05	214.97	750.54
November	357.67	151.00	224.40	733.07
December	346.51	160.87	197.82	705.20
<b>2014</b>				
January	339.20	178.92	228.80	746.92
February	269.93	145.48	258.38	673.79
March	286.74	170.77	280.34	737.85
April	307.53	169.88	239.78	717.19
May	250.18	190.75	295.89	736.82
June	263.41	220.91	245.80	730.12
July	253.87	257.71	251.50	763.08

Source: Kenya Power & Lighting Company Limited

**FIG 10: Electricity Generation by Source**



**Table 15(b): Generation and Consumption of electricity**

Million KWh													
	Generation						Consumption						
	Local Generation	Imports			EPPS (Aggreko)	Total Generation	Total KPLC Sales	Rural Electrification	Exports			Total Consumption	Power Losses
Month		Uganda	Tanzania	Total					Uganda	Tanzania	Total Exports		
<b>2013</b>													
January	675.36	3.47	0.10	3.57	22.77	701.70	499.80	34.22	2.45	0.00	2.45	534.02	170.14
February	606.36	3.13	0.10	3.23	30.70	640.29	511.40	32.69	2.95	0.00	2.95	544.09	99.16
March	645.08	3.76	0.10	3.86	23.78	672.72	462.5	33.00	3.68	0.00	3.68	495.50	177.04
April	636.80	3.75	0.10	3.85	14.74	655.39	484.20	32.30	2.84	0.00	2.84	516.50	138.89
May	668.48	4.26	0.10	4.36	21.63	698.83	512.55	33.13	3.87	0.12	3.99	545.68	149.16
June	671.24	3.70	0.10	3.80	14.78	689.82	575.53	30.88	3.66	0.13	3.79	606.41	79.62
July	700.96	3.86	0.10	3.96	21.94	726.85	470.18	30.95	3.36	0.09	3.45	501.13	222.27
August	716.17	4.62	0.11	4.73	12.14	733.04	518.69	36.93	0.11	-	0.11	555.62	177.31
September	707.63	4.17	0.11	4.28	2.48	714.39	531.82	36.82	4.00	0.13	4.13	568.64	141.62
October	750.54	4.36	0.12	4.48	3.37	758.39	523.48	47.01	4.52	0.15	4.67	570.49	183.23
November	733.07	4.20	0.10	4.30	2.85	740.22	547.98	35.80	4.22	0.13	4.37	583.78	152.07
December	705.20	4.47	0.11	4.58	6.01	715.79	495.76	34.00	-	-	-	529.76	186.03
<b>2014*</b>													
January	746.92	3.76	0.11	3.87	8.65	759.44	528.30	39.52	3.76	0.15	3.91	567.82	187.71
February	673.79	3.17	0.10	3.27	9.83	686.89	546.80	37.12	2.70	0.12	2.82	583.92	100.15
March	737.85	9.40	0.10	9.50	8.53	755.88	509.40	35.40	1.72	0.14	1.86	544.80	209.22
April	717.19	12.07	0.10	12.17	6.61	735.97	549.60	37.60	1.65	-	1.65	587.20	147.12
May	736.82	19.85	0.11	19.96	11.46	768.24	537.00	39.14	0.00	0.14	0.14	576.14	191.96
June	730.12	9.10	0.11	9.21	5.64	744.97	613.30	35.00	0.00	-	0.00	648.30	96.67
July	763.08	8.82	0.11	8.93	3.92	775.93	509.79	39.54	2.10	0.15	2.25	549.33	226.60

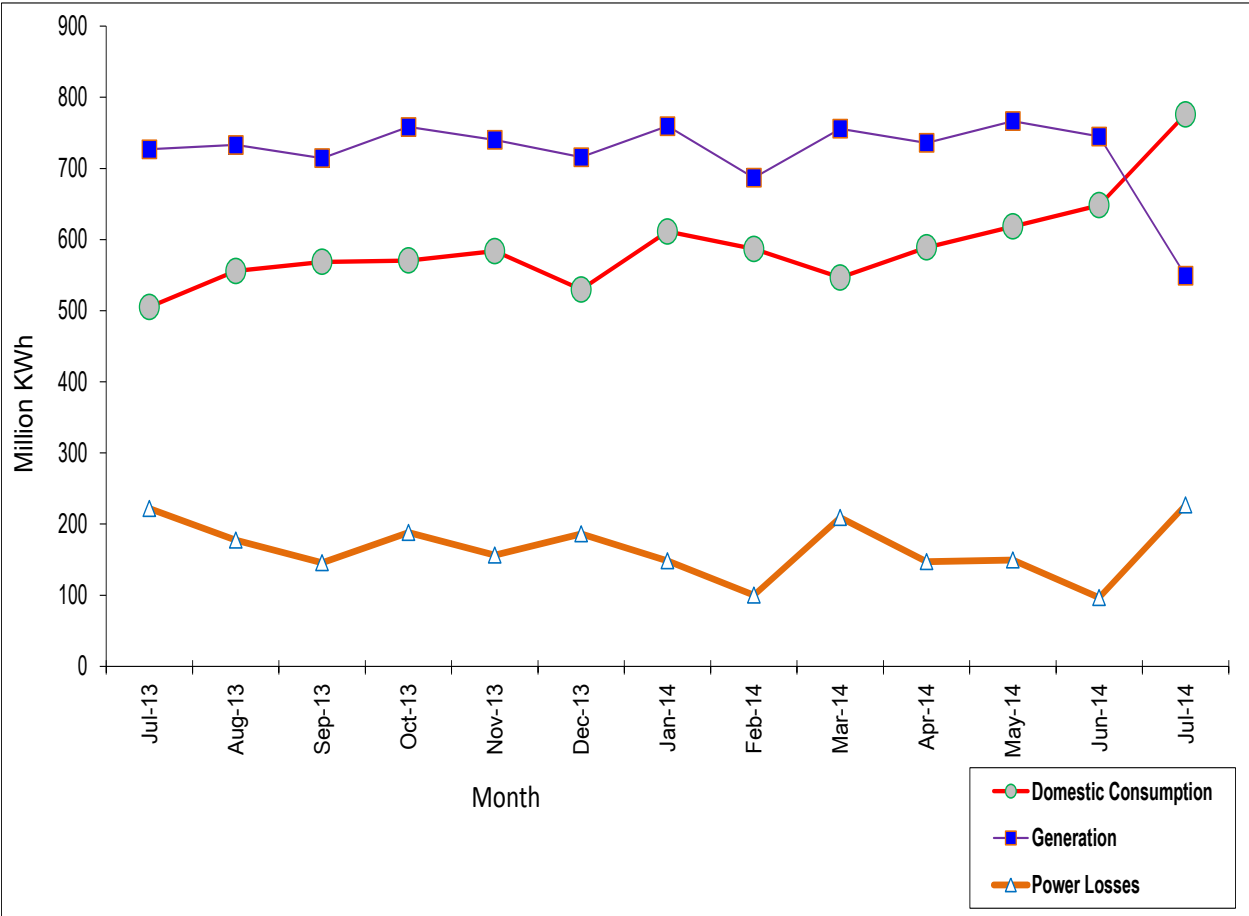
Source: Kenya Power & Lighting Company Limited

\*Provisional

- Data not available

NB: Power losses refers to difference between total generation and consumption

Fig. 11: Electricity Generation, Consumption and Power Losses





**Table 15 (c): Consumption of Petroleum Fuels**

	<b>'000 MT</b>								
<b>Period</b>	<b>Light Diesel Oil</b>	<b>Jet Fuel</b>	<b>Fuel Oils</b>	<b>Motor Spirit</b>	<b>Illuminating Kerosene</b>	<b>Heavy Diesel Oil</b>	<b>L.P.G.</b>	<b>Aviation Gasoline</b>	<b>Total Fuels</b>
<b>2013</b>									
January	139.34	54.99	32.78	64.82	29.39	1.60	5.87	0.11	<b>328.91</b>
February	133.00	46.28	28.94	56.42	25.75	2.11	5.25	0.16	<b>297.91</b>
March	127.53	47.37	27.86	57.77	23.45	1.53	4.68	0.15	<b>290.34</b>
April	125.35	43.92	30.01	56.27	22.58	1.72	4.51	0.12	<b>284.49</b>
May	132.37	47.33	28.18	61.59	22.27	1.49	5.38	0.14	<b>298.76</b>
June	141.57	42.47	19.15	58.78	20.52	1.49	5.16	0.12	<b>289.28</b>
July	147.48	42.83	21.93	69.03	25.79	1.92	5.45	0.15	<b>314.58</b>
August	151.21	41.77	26.17	72.72	28.35	1.95	4.99	0.13	<b>327.3</b>
September	141.72	43.32	22.81	70.83	25.99	2.01	4.18	0.12	<b>310.98</b>
October	141.96	45.86	20.09	71.57	25.82	1.31	5.07	0.14	<b>311.82</b>
November	135.83	44.82	27.05	68.31	24.36	0.66	4.46	0.13	<b>305.63</b>
December	128.11	35.08	23.69	75.66	22.01	0.28	4.62	0.13	<b>289.58</b>
<b>2014</b>									
January	132.99	44.59	27.14	73.85	30.81	0.62	4.71	0.16	<b>314.95</b>
February	127.52	40.60	26.78	64.49	26.09	0.59	3.61	0.18	<b>289.85</b>
March	139.98	90.92	29.59	69.78	25.99	0.38	4.01	0.00	<b>360.63</b>
April	151.97	44.62	27.96	80.00	32.44	0.62	5.53	0.16	<b>343.30</b>
May	142.08	40.60	27.20	70.42	27.66	0.59	4.36	0.18	<b>313.09</b>
June	151.03	45.85	29.66	74.90	27.65	0.38	4.91	0.14	<b>334.52</b>

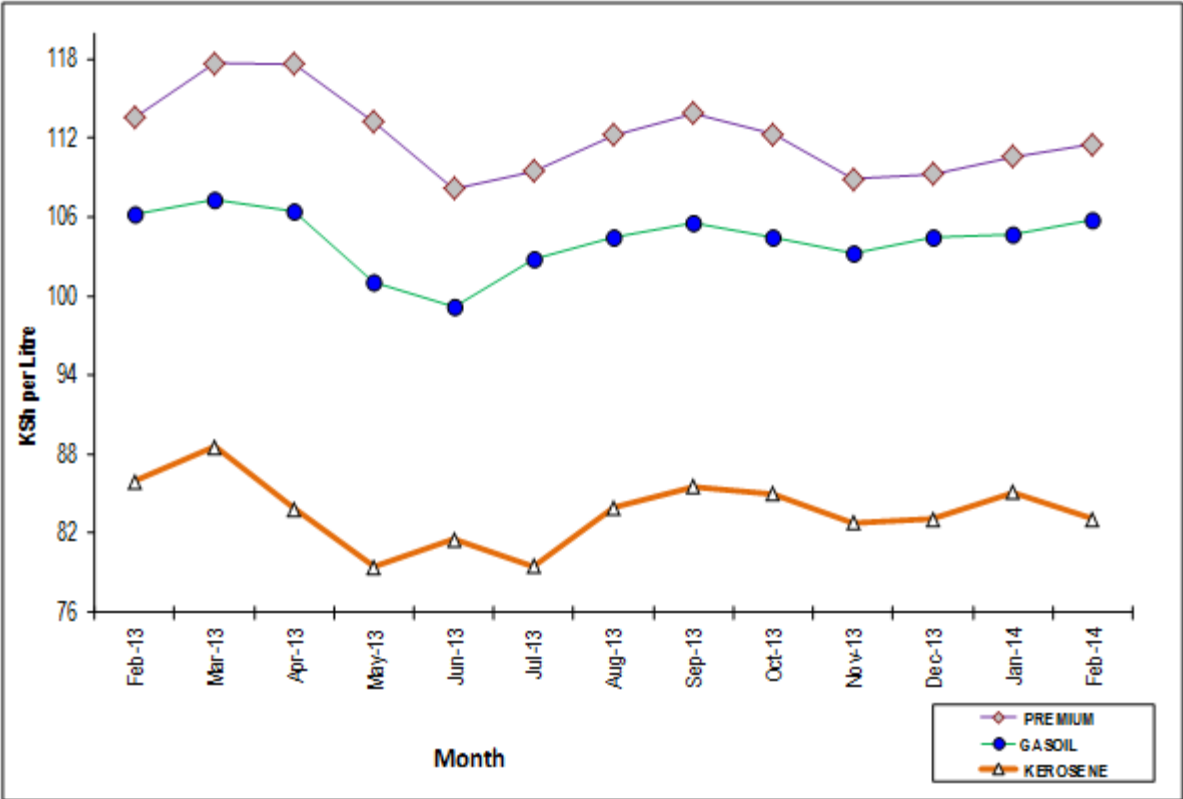
Source: Ministry of Energy and Petroleum  
MT: Denotes Metric Tonnes

**Table 15 (d): Average Retail Prices for Selected Fuel Products within Nairobi**

	KSh per litre		
Period	Motor Gasoline Premium	Light Diesel Oil (Gasoil)	Illuminating Kerosene
<b>2013</b>			
January	111.60	103.99	83.86
February	113.57	106.20	85.93
March	117.69	107.37	88.54
April	117.65	106.44	83.83
May	113.24	101.06	79.46
June	108.18	99.16	81.52
July	109.52	102.86	79.49
August	112.26	104.44	83.93
September	113.88	105.55	85.56
October	112.27	104.47	85.01
November	108.87	103.25	82.79
December	109.28	104.52	83.07
<b>2014</b>			
January	110.59	104.73	85.07
February	111.55	105.80	83.07
March	113.61	104.87	83.91
April	114.16	103.82	83.16
May	114.73	104.71	82.81
June	114.62	104.81	83.13
July	115.86	104.67	84.12

Source: Energy Regulatory Commission

Fig. 12(a): Average Retail Prices of Selected Petroleum Products

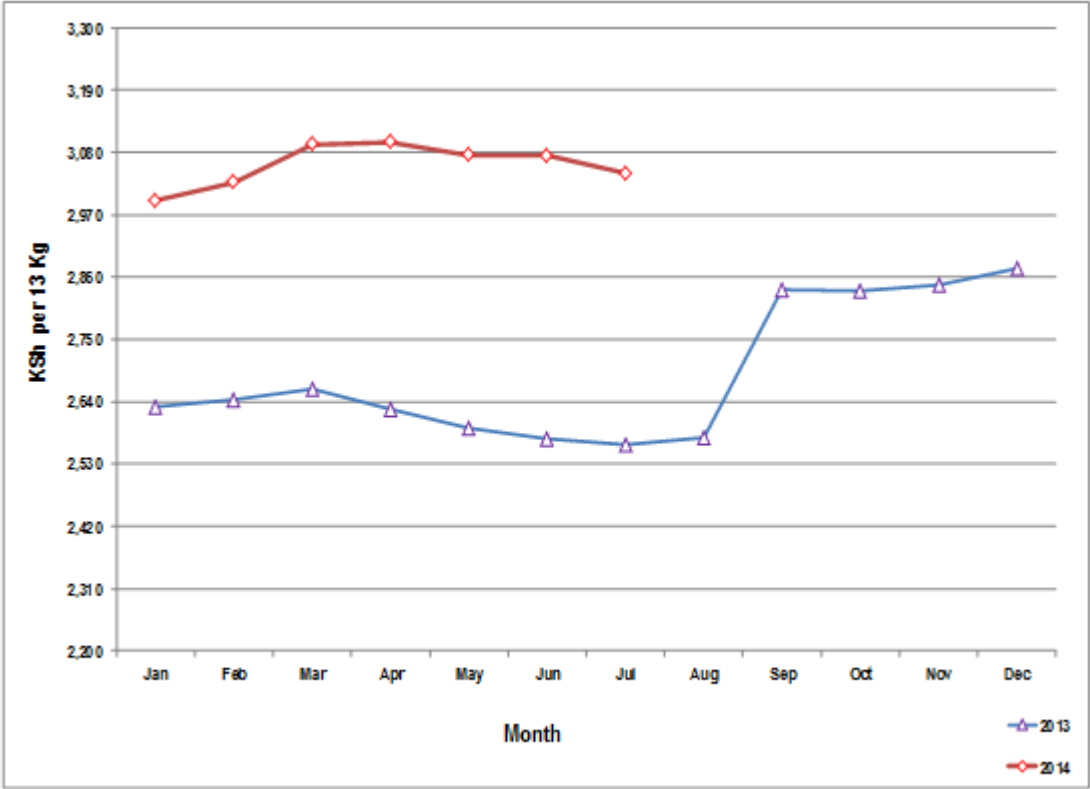


**Table 15 (e): Average Retail Prices for Selected Fuels in Kenya**

Period	Motor Gasoline Premium Light Diesel Oil, GasoilL (KSh per Litre)	(KSh per Litre)	Illuminating Kerosene (KSh per Litre)	L.P.G (KSh per 13Kg)	Charcoal (KSh per 4 Kg Tin)
<b>2003</b>					
January	112.35	104.83	84.71	2,630.73	66.44
February	114.32	107.04	86.78	2,643.04	66.91
March	118.41	108.21	89.39	2,662.61	67.29
April	118.38	107.29	84.68	2,626.37	69.86
May	113.99	101.91	80.32	2,592.85	70.55
June	108.93	100.01	82.38	2,573.75	70.44
July	109.93	102.21	80.36	2,564.79	71.15
August	113.01	105.29	84.79	2,575.93	71.68
September	114.69	106.47	86.47	2,836.67	70.97
October	113.09	105.39	85.92	2,835.20	70.54
November	109.17	104.17	83.71	2,846.06	70.54
December	110.11	105.44	83.99	2,876.00	72.80
<b>2014</b>					
January	111.41	105.65	85.98	2,995.22	73.47
February	112.37	106.72	83.99	3,027.03	73.77
March	114.43	105.79	84.82	3,094.16	72.86
April	114.98	104.74	84.08	3,098.25	72.99
May	115.55	105.63	83.73	3,075.06	73.27
June	115.43	105.73	84.04	3,074.57	73.34
July	116.67	105.59	85.03	3,042.80	73.11

Source: Electricity Regulatory Commission

Fig 12(b): Average Prices for Liquefied Petroleum Gas in Kenya



**Table 15(f): Murban ADNOC Crude Oil Prices**

	US\$/ BBL					
Month/Year	2009	2010	2011	2012	2013	2014
January	48.85	77.50	95.55	114.20	112.05	109.75
February	44.95	74.20	103.60	120.45	115.40	109.95
March	47.55	78.30	112.55	127.00	109.95	108.30
April	45.85	84.80	120.70	121.20	105.65	107.95
May	60.15	77.85	113.60	110.60	103.65	104.64
June	71.65	74.80	112.15	97.35	103.00	112.15
July	66.95	73.00	113.95	101.75	106.85	113.95
August	72.75	74.60	109.05	111.65	111.70	
September	69.10	75.90	110.90	115.40	114.50	
October	69.25	81.50	108.95	113.20	112.45	
November	78.60	85.65	114.35	112.10	112.20	
December	76.10	91.85	111.80	110.75	113.85	

US\$/ BBL: US Dollar per Barrel

Price: Abu Dhabi Free On Board (FOB)

ADNOC: Abu Dhabi National Oil Corporation

**Fig 13: Trends for Murban ADNOC Crude Oil Prices**



**Table 16: Value of Building Plans Approved by Nairobi City County Planning Compliance & Enforcement Department**

Month	KSh Million			Index*		
	Residential	Non Residential	Aggregate	Residential	Non Residential	Aggregate
<b>2013</b>						
January	5,899.4	11,970.5	17,869.9	90.2	173.3	266.2
February	7,315.4	7,374.9	14,690.2	111.9	106.7	218.9
March	8,930.9	6,882.8	15,813.7	136.6	99.6	235.6
April	8,622.5	4,765.3	13,387.8	131.8	69.0	199.5
May	9,250.3	6,765.3	16,015.6	141.4	97.9	238.6
June	10,935.3	8,254.5	19,189.8	167.2	119.4	285.9
July	11,135.0	8,156.8	19,291.8	170.3	118.1	287.4
August	11,210.8	8,568.8	19,779.6	171.4	124.0	294.7
September	12,543.2	8,418.5	20,961.6	191.8	121.8	312.3
October	14,031.3	11,897.0	25,928.3	214.6	172.2	386.3
November	17,914.0	12,151.2	30,065.2	273.9	175.9	447.9
December	11,845.9	11,923.3	23,769.1	181.1	172.6	354.1
<b>2014</b>						
January	6,637.0	5,623.1	12,260.1	94.6	76.2	170.6
February	7,754.0	6,003.1	13,757.1	110.5	81.4	191.5
March	8,354.8	7,069.3	15,424.1	119.1	95.8	214.7
April	10,554.8	7,282.8	17,837.6	150.4	98.7	248.3
May	11,424.5	6,889.2	18,313.7	162.8	93.4	254.9
June	11,762.8	7,479.2	19,242.0	167.6	101.4	267.8

Source: Nairobi City County.

\* Actual deflated by relevant construction cost indices (Dec1972 =100)

**Table 17(a): Domestic Production of Sugar**

Month/Year	Metric Tonnes					
	2009	2010	2011	2012	2013	2014*
January	53,968	48,100	55,974	53,852	49,046	64,298
February	46,115	42,982	52,069	49,480	50,036	60,044
March	53,687	45,388	53,842	52,342	43,647	63,365
April	46,164	43,801	52,061	44,914	39,151	47,278
May	46,002	34,465	49,130	40,410	36,529	44,094
June	47,410	37,828	38,818	45,111	49,512	42,866
July	33,078	33,495	25,884	41,607	61,802	
August	36,827	41,911	26,060	37,058	58,687	
September	42,586	45,595	22,815	32,503	50,303	
October	43,750	43,669	28,990	30,123	52,751	
November	50,115	50,822	32,689	31,886	54,752	
December	48,297	55,414	36,729	34,651	53,994	
<b>Total</b>	<b>547,999</b>	<b>523,470</b>	<b>475,061</b>	<b>493,937</b>	<b>600,210</b>	

Source: Kenya Sugar Board

\*Provisional

**Table 17(b): Production of Soft Drinks**

						'000 Litres
Month	2009	2010	2011	2012	2013	2014*
January	31,153	29,405	34,446	34,317	32,756	38,408
February	26,891	31,178	32,457	32,009	36,014	39,595
March	34,847	33,984	36,156	37,363	42,499	40,783
April	32,585	29,352	31,162	29,331	27,450	40,260
May	26,934	29,445	26,622	24,359	27,851	41,352
June	28,314	29,588	28,910	27,391	31,362	39,041
July	25,279	29,332	28,478	22,073	28,909	
August	26,829	28,525	28,580	24,458	28,143	
September	31,594	29,593	29,674	31,113	36,474	
October	29,922	30,435	28,540	32,540	35,258	
November	29,664	29,333	27,366	31,497	36,777	
December	37,261	31,163	38,962	33,067	43,534	
<b>Total</b>	<b>361,273</b>	<b>361,333</b>	<b>371,352</b>	<b>359,518</b>	<b>407,028</b>	

\*Provisional

**Table 17(c): Production of Assembled Vehicles**

						Numbers
Month	2009	2010	2011	2012	2013	2014*
January	379	299	290	387	435	511
February	556	521	413	588	536	792
March	517	510	462	303	496	737
April	494	438	449	594	584	798
May	341	521	554	654	560	773
June	326	550	550	588	609	779
July	482	509	524	570	617	
August	388	460	553	588	578	
September	373	461	651	597	590	
October	391	460	660	585	652	
November	464	490	594	420	733	
December	349	502	349	344	558	
<b>Total</b>	<b>5,060</b>	<b>5,721</b>	<b>6,049</b>	<b>6,218</b>	<b>6,948</b>	

\*Provisional



**Table 17(d): Production of Galvanised Sheets**

					Metric Tonnes
Month	2010	2011	2012	2013	2014*
January	14,254	22,094	22,940	25,528	23,748
February	13,700	22,386	19,655	22,874	23,985
March	20,095	22,928	21,507	26,297	24,225
April	18,929	20,957	20,892	26,010	22,596
May	18,842	24,744	22,197	23,866	23,726
June	16,006	24,677	17,180	26,147	
July	16,790	24,906	21,411	25,007	
August	16,457	24,659	23,040	27,398	
September	16,299	17,988	23,268	25,051	
October	18,488	16,619	20,473	27,588	
November	16,219	22,104	21,969	26,421	
December	15,331	24,033	21,283	22,965	
<b>Total</b>	<b>201,410</b>	<b>268,096</b>	<b>255,815</b>	<b>277,754</b>	

\*Provisional

**Table 17(e): Cement Production and Consumption**

						Metric	
						Tonnes	
Month	2012		2013		2014*		
	Production	Consumption	Production	Consumption	Production	Consumption	
January	350,615	272,261	393,921	342,296	454,960	382,235	
February	378,453	330,328	380,032	336,756	441,927	353,859	
March	397,009	328,259	367,673	279,129	459,901	387,266	
April	360,540	308,617	365,579	306,196	460,758	426,523	
May	381,026	309,501	414,161	337,866	476,959	450,379	
June	396,951	329,366	422,519	361,839	460,205	399,525	
July	398,458	337,295	454,288	373,767	474,254	433,709	
August	399,873	339,916	432,938	373,466			
September	382,141	322,912	453,542	381,272			
October	421,579	365,769	487,594	407,151			
November	415,866	382,400	464,834	392,733			
December	357,212	310,639	422,048	374,015			
<b>TOTAL</b>	<b>4,639,723</b>	<b>3,937,263</b>	<b>5,059,129</b>	<b>4,266,487</b>			

\*Provisional

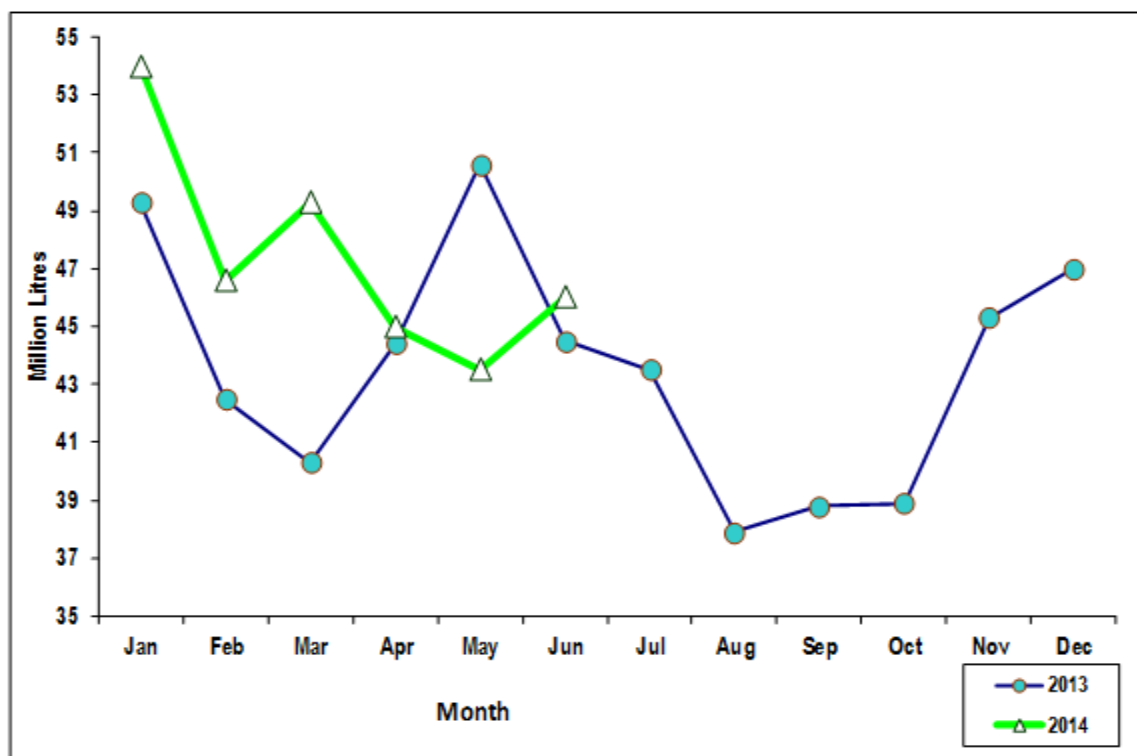
**Table 17(f): Milk Intakes in the Formal Sector**

	Million Litres				
Month	2010	2011	2012	2013	2014*
January	49.27	47.1	45.5	49.3	54.0
February	43.9	40.8	32.9	42.5	46.6
March	48.61	38.8	28.9	40.3	49.3
April	44.64	41.8	26.0	44.4	45.0
May	42.99	45.6	37.3	50.6	43.5
June	37.58	45.7	46.2	44.5	46.0
July	39.91	49.5	43.5	43.5	
August	38.63	46.4	45.5	37.9	
September	37.22	49.1	45.2	38.8	
October	41.68	50.3	47.8	38.9	
November	43.37	46.4	48.6	45.3	
December	43.0	47.7	47.9	47.0	
<b>Total</b>	<b>510.8</b>	<b>549.0</b>	<b>495.2</b>	<b>523.0</b>	

Source: Kenya Dairy Board

\* Provisional

**Fig 14: Milk Intake in the Formal Sector**



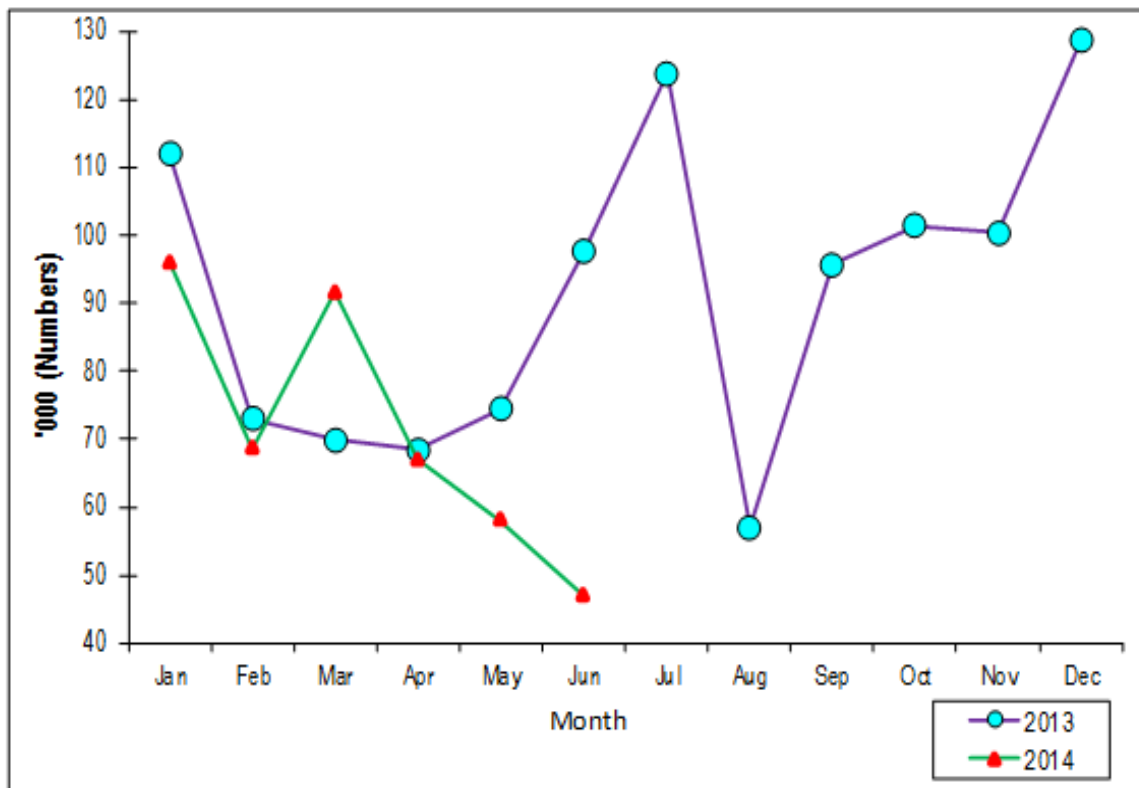
**Table 18: Visitor Arrivals\* through J.K.I.A and M.I.A**

<b>Numbers</b>			
<b>Month</b>	<b>AIRPORT JKIA</b>	<b>MIA</b>	<b>Total</b>
<b>2013</b>			
January	85,538	26,446	111,984
February	48,970	24,031	73,001
March	52,103	17,850	69,953
April	61,685	6,739	68,424
May	69,751	4,772	74,523
June	91,083	6,692	97,775
July	112,332	11,480	123,812
August	33,749	23,334	57,083
September	83,986	11,721	95,707
October	89,045	12,362	101,407
November	81,242	19,068	100,310
December	103,514	25,159	128,673
<b>2014</b>			
January	75,906	19,853	95,759
February	50,270	18,334	68,604
March	76,561	15,041	91,602
April	59,357	7,293	66,650
May	54,334	3,967	58,301
June	42,549	4,758	47,307

Source: Kenya Tourism Board

\* Visitors arrivals exclude Kenyans

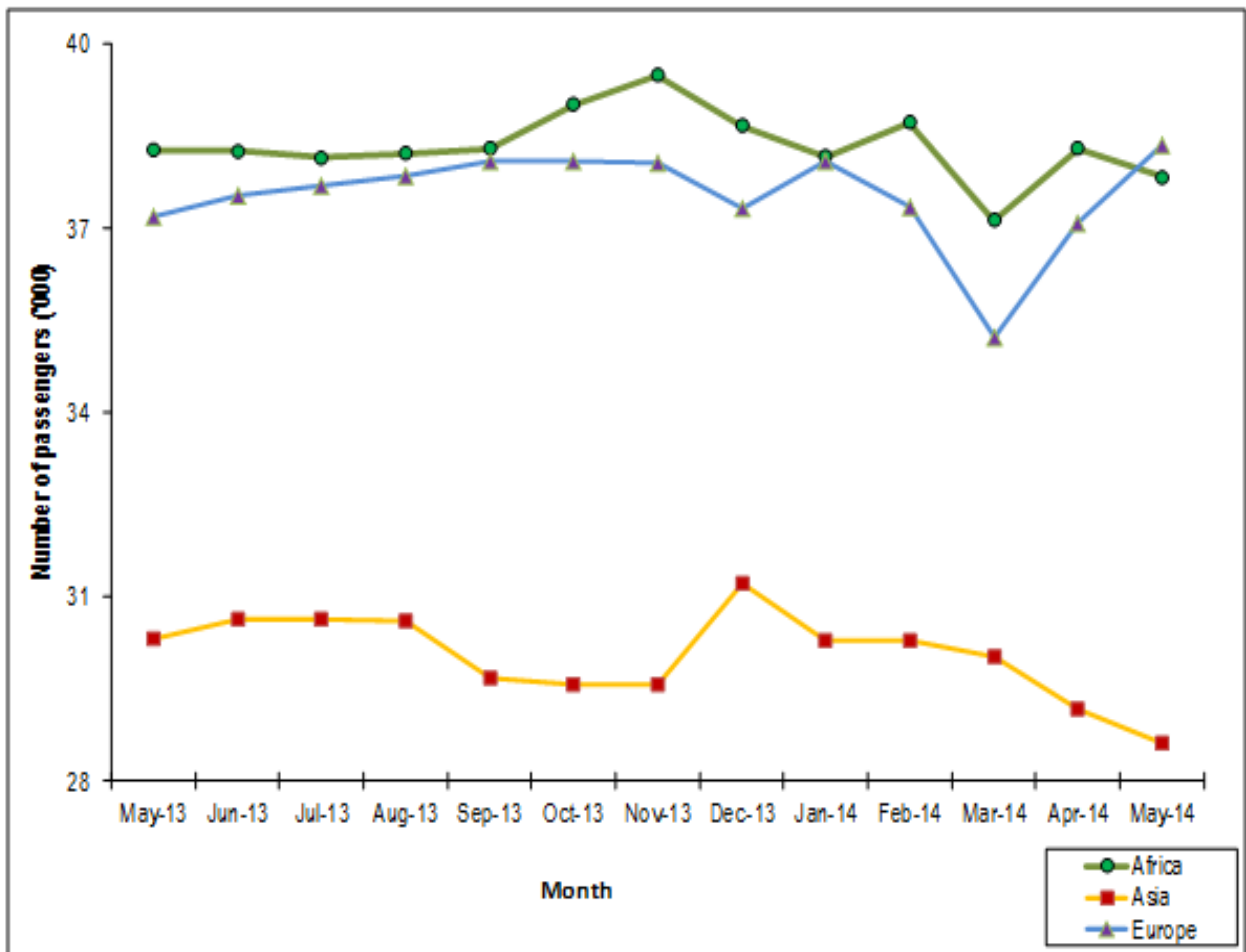
Fig 15: Visitor Arrivals through J.K.I.A and M.I.A



**Table (19a): Jomo Kenyatta international airport -Embarked Passengers by Port of Destination**

Ports	2013												2014					Numbers
	Jan	Feb	Mar	April	May	June	July	Aug	Sep	Oct	Nov	Dec	Jan	Feb	Mar	April	May	
ADDIS ABABA (ADD)	1,879	1,752	1,685	1,702	1,725	1,715	1,697	1,736	1,747	1,990	1,910	1,893	1,886	1,786	1,913	1,990	1,992	
CAIRO (CAI)	3,278	2,683	2,672	2,691	2,729	2,687	2,698	2,777	2,817	2,676	2,679	2,541	2,379	2,301	2,312	2,270	2,165	
DAR ES SALAAM (DAR)	9,340	9,640	9,589	9,536	9,548	9,556	9,589	9,543	9,536	9,583	9,672	9,260	9,385	9,016	8,353	8,426	8,391	
ENTEBBE (EBB)	9,986	9,785	10,012	10,101	10,151	10,154	10,186	10,054	10,411	11,328	11,403	11,291	11,033	12,144	11,214	11,803	11,562	
HARARE (HRE)	2,686	2,672	2,768	2,739	2,842	2,786	2,698	2,742	2,753	2,679	2,768	2,802	2,593	2,804	2,643	2,802	2,813	
JOHANNESBURG (JNB)	11,436	11,571	11,321	11,298	11,279	11,358	11,278	11,363	11,027	10,756	11,057	10,881	10,893	10,667	10,690	11,003	10,914	
<b>TOTAL AFRICA</b>	<b>38,605</b>	<b>38,103</b>	<b>38,047</b>	<b>38,067</b>	<b>38,274</b>	<b>38,256</b>	<b>38,146</b>	<b>38,215</b>	<b>38,291</b>	<b>39,012</b>	<b>39,489</b>	<b>38,668</b>	<b>38,169</b>	<b>38,718</b>	<b>37,125</b>	<b>38,294</b>	<b>37,837</b>	
BOMBAY (BOM)	10,869	10,902	10,579	10,824	10,734	10,790	10,782	10,798	10,333	9,961	9,879	9,763	9,758	9,620	9,553	9,145	9,186	
DUBAI (DXB)	19,427	18,756	17,981	17,896	17,886	18,325	18,350	18,374	17,936	17,838	17,854	19,572	18,697	18,535	18,378	17,692	17,234	
JEDAH (JED)	1,468	1,339	1,472	1,411	1,435	1,423	1,427	1,425	1,406	1,772	1,832	1,875	1,832	2,115	2,078	2,337	2,200	
MUSCAT (MCT)	-	-	-	-	261	101	73	-	-	-	-	-	-	-	-	-	-	
<b>TOTAL ASIA</b>	<b>31,764</b>	<b>30,997</b>	<b>30,470</b>	<b>30,512</b>	<b>30,316</b>	<b>30,639</b>	<b>30,632</b>	<b>30,597</b>	<b>29,675</b>	<b>29,571</b>	<b>29,565</b>	<b>31,210</b>	<b>30,287</b>	<b>30,270</b>	<b>30,009</b>	<b>29,174</b>	<b>28,620</b>	
AMSTERDAM (AMS)	12,985	11,829	11,684	11,748	11,876	12,098	12,289	12,194	11,823	11,843	11,811	11,626	11,758	11,883	12,478	13,270	14,411	
BRUSSELS (BRU)	1,564	1,168	1,128	1,124	1,151	1,224	1,213	1,225	1,346	1,356	1,358	1,419	1,349	1,352	1,348	1,291	1,272	
LONDON (LON)	18,163	17,894	17,681	17,821	17,846	17,872	17,954	17,890	17,912	18,312	18,341	17,562	18,263	17,445	15,679	16,369	16,559	
PARIS-(CDG) & (PAR)	4,943	3,713	3,574	3,948	4,021	4,082	3,986	4,038	3,725	3,568	3,545	3,601	3,557	3,637	2,668	3,123	3,142	
ROME (ROM)	-	-	-	-	-	-	-	-	-	-	-	-	-	-	-	-	-	
ZURICH (ZRH)	3,901	2,348	2,261	2,272	2,284	2,258	2,264	2,513	3,286	3,024	3,021	3,102	3,167	3,029	3,062	3,029	2,978	
<b>TOTAL EUROPE</b>	<b>41,556</b>	<b>36,952</b>	<b>36,328</b>	<b>36,913</b>	<b>37,178</b>	<b>37,534</b>	<b>37,706</b>	<b>37,860</b>	<b>38,092</b>	<b>38,103</b>	<b>38,076</b>	<b>37,310</b>	<b>38,094</b>	<b>37,346</b>	<b>35,235</b>	<b>37,082</b>	<b>38,362</b>	
<b>TOTAL OTHERS**</b>	<b>72,246</b>	<b>72,168</b>	<b>72,146</b>	<b>72,196</b>	<b>72,287</b>	<b>72,378</b>	<b>72,412</b>	<b>72,286</b>	<b>72,452</b>	<b>72,186</b>	<b>71,456</b>	<b>71,230</b>	<b>72,012</b>	<b>70,223</b>	<b>71,146</b>	<b>70,132</b>	<b>70,101</b>	
<b>GRAND TOTAL</b>	<b>184,171</b>	<b>178,220</b>	<b>176,991</b>	<b>177,688</b>	<b>178,055</b>	<b>178,807</b>	<b>178,896</b>	<b>178,958</b>	<b>178,685</b>	<b>178,872</b>	<b>178,586</b>	<b>178,418</b>	<b>178,562</b>	<b>176,557</b>	<b>173,515</b>	<b>174,682</b>	<b>174,920</b>	

Fig 16: J.K.I.A. Passengers by Region of Destination

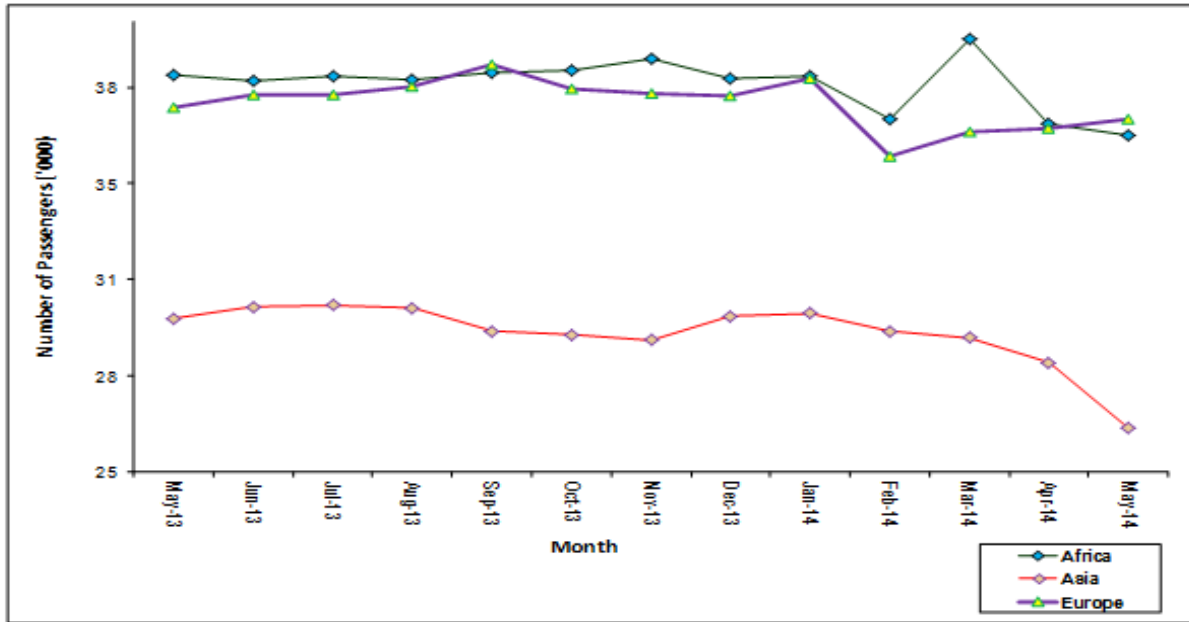


**Table (19b): Jomo Kenyatta international airport - Landed Passengers by Port of Origin**

PORTS	2012											2013					2014				
	Total	Jan	Feb	March	April	May	June	July	Aug	Sep	Oct	Nov	Dec	Total	Jan	Feb	March	April	May		
ADDIS ABABA (ADD)	21,448	1,859	1,816	1,823	2,016	2,028	1,692	1,712	1,689	1,674	1,727	1,747	1,876	1,821	1,815	19,167	1,859	1,816	1,823	2,016	2,028
CAIRO (CAI)	31,916	2,356	2,306	2,286	2,263	2,156	2,698	2,734	2,692	2,711	2,707	2,817	2,780	2,786	April	29,746	2,356	2,306	2,286	2,263	2,156
DAR ES SALAAM (DAR)	109,610	9,465	8,394	8,924	8,199	8,143	9,568	9,581	9,576	9,584	9,562	9,536	9,503	9,582	9,436	105,077	9,465	8,394	8,924	8,199	8,143
ENTEBBE (EBB)	127,747	10,987	10,854	12,321	10,912	10,842	10,102	10,145	10,139	10,173	10,127	10,411	10,550	10,768	10,746	112,895	10,987	10,854	12,321	10,912	10,842
HARARE (HRE)	31,158	2,589	2,645	2,813	2,634	2,671	2,864	2,859	2,794	2,835	2,787	2,753	2,642	2,639	2,642	30,332	2,589	2,645	2,813	2,634	2,671
JOHANNESBURG (JNB)	132,946	10,897	10,730	11,326	10,557	10,910	11,123	11,192	11,146	11,206	11,151	11,027	11,012	11,155	10,986	122,200	10,897	10,730	11,326	10,557	10,910
TOTAL AFRICA	455,725	38,153	36,745	39,403	36,581	36,750	38,047	38,223	38,036	38,183	38,061	38,291	38,363	38,751	38,094	419,417	38,153	36,745	39,403	36,581	36,750
BOMBAY (BOM)	120,268	9,687	9,435	9,512	8,671	8,596	10,758	10,693	10,721	10,689	10,740	10,333	10,173	9,827	9,748	115,076	9,687	9,435	9,512	8,671	8,596
DUBAI (DXB)	210,872	18,741	18,369	17,782	17,812	15,491	17,689	17,697	18,243	18,342	18,253	17,936	17,674	17,785	18,641	198,971	18,741	18,369	17,782	17,812	15,491
JEDAH (JED)	16,405	1,847	1,869	2,175	2,146	2,352	1,397	1,426	1,412	1,432	1,459	1,406	1,715	1,766	1,786	16,684	1,847	1,869	2,175	2,146	2,352
MUSCAT (MCT)	2,723	-	-	-	-	-	394	289	112	84	-	-	-	-	-	1,239	-	-	-	-	-
TOTAL ASIA	350,268	30,275	29,673	29,469	28,629	26,439	30,238	30,105	30,488	30,547	30,452	29,675	29,562	29,378	30,175	331,970	30,275	29,673	29,469	28,629	26,439
AMSTERDAM (AMS)	159,337	11,765	12,623	12,097	13,231	13,198	11,769	11,894	12,178	12,297	12,258	11,924	11,736	11,727	1,362	121,630	11,765	12,623	12,097	13,231	13,198
BRUSSELS (BRU)	18,980	1,375	1,367	1,341	1,284	1,321	1,129	1,140	1,208	1,194	1,213	1,485	1,398	1,382	17,735	28,993	1,375	1,367	1,341	1,284	1,321
LONDON (LON)	209,417	18,258	15,694	16,213	16,069	16,047	17,786	17,863	17,879	17,898	17,884	17,786	17,771	17,757	3,532	181,662	18,258	15,694	16,213	16,069	16,047
PARIS-(CDG)&( PAR)	44,514	3,526	2,679	3,641	2,846	2,731	4,023	4,036	4,103	3,973	4,069	3,865	3,593	3,553	-	38,442	3,526	2,679	3,641	2,846	2,731
ROME (ROM)	2,967	-	-	-	-	-	-	-	-	-	-	-	-	-	-	-	-	-	-	-	-
ZURICH (ZRH)	39,886	3,156	3,143	3,042	2,987	2,894	2,263	2,189	2,204	2,198	2,415	3,495	3,243	3,173	3,162	28,850	3,156	3,143	3,042	2,987	2,894
TOTAL(EUROPE)	475,101	38,080	35,506	36,334	36,417	36,191	36,970	37,122	37,572	37,560	37,839	38,555	37,741	37,592	37,511	412,509	38,080	35,506	36,334	36,417	36,191
OTHERS (TOTAL) **	867,011	71,879	71,839	70,155	71,129	71,638	72,216	72,365	72,384	72,397	72,423	72,173	72,879	72,748	72,370	796,287	71,879	71,839	70,155	71,129	71,638
<b>GRAND TOTAL</b>	<b>2,148,105</b>	<b>178,387</b>	<b>173,760</b>	<b>175,361</b>	<b>172,756</b>	<b>171,018</b>	<b>177,471</b>	<b>177,815</b>	<b>178,480</b>	<b>178,687</b>	<b>178,775</b>	<b>178,694</b>	<b>178,545</b>	<b>178,469</b>	<b>178,150</b>	<b>1,960,183</b>	<b>178,387</b>	<b>173,760</b>	<b>175,361</b>	<b>172,756</b>	<b>171,018</b>

\*\* Port of Origin not listed

FIG 17: J.K.I.A. Passengers by Region of Origin





**Table19 c: New Vehicle Registration**

	2013											Total	2014					
	Apr	Mar	April	May	June	July	Aug	Sep	Oct	Nov	Dec		Jan	Feb	Mar	Apr	May	June
<b>Saloons</b>	511	787	1,004	1,283	1,471	1,832	1,698	1,678	1,426	1,831	1,671	<b>16,343</b>	1,575	892	1,096	1,110	1,316	1,208
<b>Station Wagon</b>	1,733	2,572	2,952	3,880	4,231	5,084	4,993	4,864	4,199	5,491	4,960	<b>48,662</b>	4,611	2,729	3,585	3,492	4,638	4,068
<b>Vans, Pick- ups. etc</b>	618	668	569	873	737	944	866	907	834	1168	824	<b>9,819</b>	956	1,409	924	794	1,050	862
<b>M/Buses</b>	13	4	21	19	11	4	4	9	14	33	82	<b>235</b>	4	11	7	12	15	9
<b>Buses</b>	118	103	125	195	179	195	181	143	156	251	223	<b>2,062</b>	110	165	128	132	150	165
<b>Lorries</b>	611	685	610	853	790	988	849	913	895	929	641	<b>9,570</b>	751	906	599	721	925	824
<b>Trailers</b>	299	255	389	366	389	431	357	334	354	262	268	<b>3,973</b>	251	255	244	204	241	216
<b>Motors Cycles</b>	12,543	11,643	14,055	17,001	15,194	13,176	5,737	6,364	7,309	5,414	3,182	<b>125,058</b>	6,437	10,719	8,367	5,609	5,203	6,054
<b>3 Wheelers</b>	226	156	173	319	245	287	297	228	318	301	275	<b>3,103</b>	363	295	271	413	261	221
<b>Wheeled tractors</b>	151	89	192	189	142	160	131	190	156	181	145	<b>1,902</b>	205	227	171	152	145	202
<b>Others</b>	105	99	113	92	138	122	111	119	142	134	127	<b>1,451</b>	148	171	237	150	165	182
<b>TOTAL</b>	<b>16,928</b>	<b>17,061</b>	<b>20,203</b>	<b>25,070</b>	<b>23,527</b>	<b>23,223</b>	<b>15,224</b>	<b>15,749</b>	<b>15,803</b>	<b>15,995</b>	<b>12,398</b>	<b>222,178</b>	<b>15,411</b>	<b>17,779</b>	<b>15,629</b>	<b>12,789</b>	<b>14,109</b>	<b>14,011</b>

Source: Kenya Revenue Authority